

basilpaterson
edinburgh 
2012

Excellence in Education Since 1929



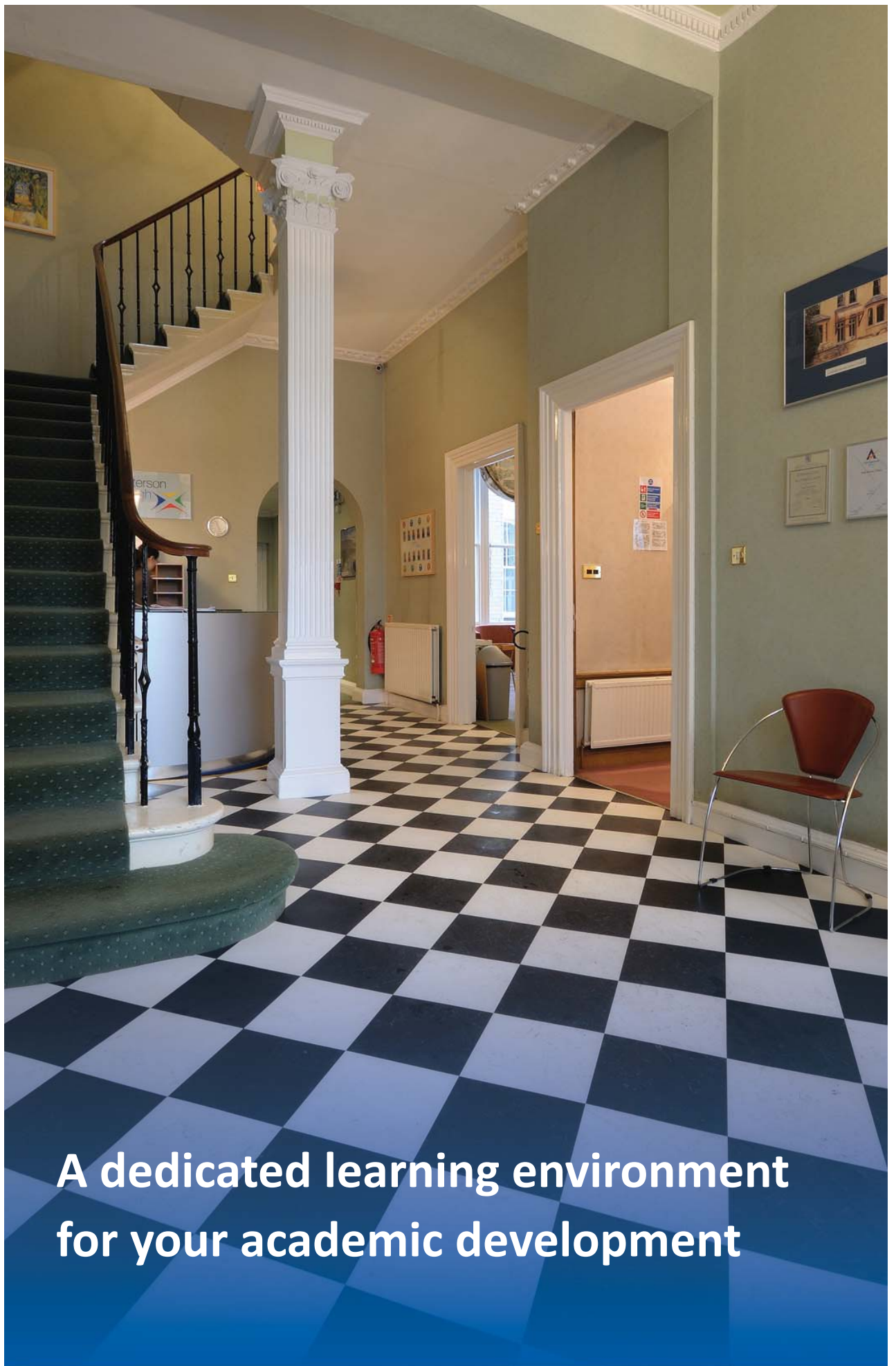
Cours-de-langues.fr

Le site indépendant de
réservations de cours
de langues le plus visité
au monde

Réservez votre cours à Basil Paterson, Edinburgh pour le prix le plus bas dans le monde entier
et lisez les commentaires pour Basil Paterson, Edinburgh d'anciens participants au lien suivant
<http://www.languagecourse.net/cours-de-langues/ecole-basil-paterson-edinburgh.php3>

Nos experts en séjour linguistique se feront un plaisir de vous aider.

+33-(0)1-78416974
info@cours-de-langues.fr



**A dedicated learning environment
for your academic development**



Welcome

Our academic impact

As one of the oldest language schools in the UK, Basil Paterson College has a long tradition of academic excellence and remains dedicated to empowering each student in their English language learning.

Our aim is for every student to leave us having reached their maximum potential and we continually help you to set achievable goals which ensures you stay motivated and focussed on developing your skills. We are passionate about teaching and your progression and development is our priority.

You will study in a unique academic environment alongside native speakers studying for UK examinations. Experienced teaching staff work hard to ensure that you receive a high level of academic support, encouraging your development. The focus is on learning, both inside and outside the classroom – providing a platform for your success.

Whether your aim is a personal or professional one, we will help you on your way to achieving it, maintaining an intensive and supportive atmosphere to increase your confidence and extend your skill set.

Above all, we work to ensure that you enjoy your time with us and emerge as a confident communicator in English.

We look forward to welcoming you to Basil Paterson College!

Contents

- 4 Our Academic Approach
- 5 Group Study
- 6 English for Examinations
- 7 IELTS and Cambridge English
- 8 Combination Course
- 9 Individual Tuition
- 10 Accommodation
- 11 Social Activities
- 12 Travel
- 13 Enrolment Form
- 15 Terms and Conditions



Our Academic Approach

Become a high achiever

Our Group Study course provides you with the essential tools for effective comprehension and communication in English. In addition to the development of your knowledge and accuracy, classes focus on the core language skills of reading, writing, listening and spoken performance.

The course programme is based on a single skills approach to language teaching and consists of the following classes:

Language Focus

Target language and grammar points are introduced, which form the foundation of your language ability. Accuracy is developed through the use of controlled practice, exercises and feedback.

Language Practice

Practise and improve the core skills of listening and speaking. Lessons learnt in Language Focus are further consolidated and skills are expanded.

Spoken Performance Workshop

This class is dedicated to improving your spoken communication and building your confidence. With a focus on pronunciation and by using role-plays and presentations, you develop oral fluency, which enables you to operate confidently in a variety of real-life situations.

Skills Focus

Intensive focus on extending your reading and writing skills. You will receive guided practice in tackling different genres and styles of reading texts and producing a variety of written pieces.

Emphasis is also placed on using reading as an essential tool for extending your vocabulary.

Project Workshop

In groups you will work together to produce a shared outcome. This method of working helps you develop skills such as thinking and problem solving, collaboration, research, organisation and planning.



Group Study

Full-time course

25 hours per week

09.00—10.00	Language Focus
10.00—10.15	Morning Break
10.15—11.15	Language Practice
11.15—11.30	Morning Break
11.30—12.30	Spoken Performance Workshop
12.30—13.30	Lunch Break
13.30—14.30	Skills Focus
14.30—14.45	Afternoon Break
14.45—15.45	Project Workshop

Part-time course

15 hours per week

09.00—10.00	Language Focus
10.00—10.15	Morning Break
10.15—11.15	Language Practice
11.15—11.30	Morning Break
11.30—12.30	Spoken Performance Workshop

- Start any Monday of the year
- Minimum age 17
- Small class size – max 10 per class
- All levels catered for, from Beginner to Advanced
- Study in same building as native English speakers

Course fees per week

	Full-time	Part-time
2–3 weeks	£384	£288
4–7 weeks	£364	£288
8–11 weeks	£344	£288
12–23 weeks	£324	£288
24+ weeks	£314	£288

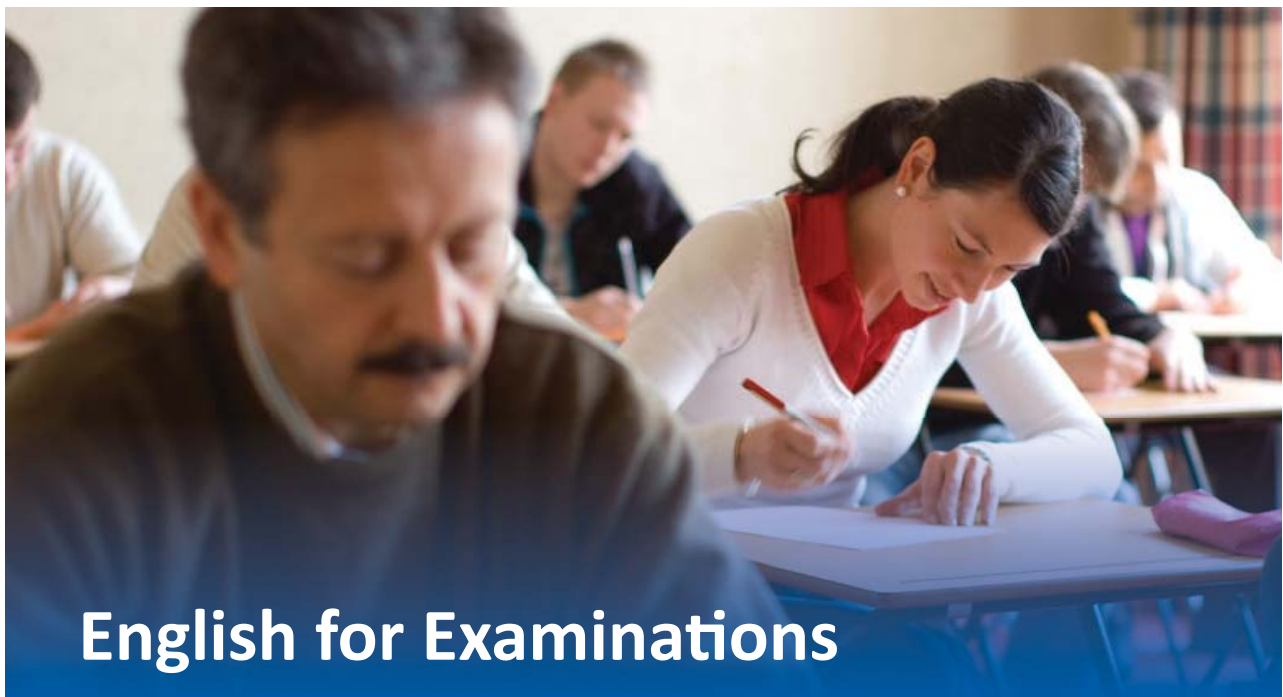
For one week price please add supplement of £80 to the 2-3 week price

Course fees include...

- Access to course materials
- Individual report
- Self-study resources
- Internet and WiFi
- Tutor Support at lunchtime
- Social activities

“I achieved all of my objectives, even more than I expected...I’m very impressed with how much my English has improved!”

Laura, Spain



English for Examinations

Prepare for success

We understand the challenges examinations in English can bring. Our examination courses help you prepare for your exam, with development of your language skills in morning classes, and improvement of your exam technique in the afternoon classes:

Exam Strategies: Focuses on techniques required to excel in your exam. Experienced teachers will familiarise you with the format of the examination and introduce the criteria used for marking the exam, providing tactics for each section.

Exam Skills Practice: Specific focus and analysis of skills required in the exam. Relevant language will be reviewed and timed examination practice will also be provided.

- Small class size – maximum 10
- Guaranteed place on next available exam
- Start IELTS any Monday of the year
- Minimum level of Upper Int (5.5) for IELTS course
- Minimum 2 weeks study for IELTS

“Thanks to the organisation of the course I maximised my progress and succeeded in the Proficiency examination.”

Andrea, Switzerland

Exam preparation

25 hours per week

09.00—10.00	Language Focus
10.00—10.15	Morning Break
10.15—11.15	Language Practice
11.15—11.30	Morning Break
11.30—12.30	Spoken Performance Workshop
12.30—13.30	Lunch Break
13.30—14.30	Exam Strategies
14.30—14.45	Afternoon Break
14.45—15.45	Exam Skills Practice

Course fees (exam fees not included)

IELTS fees per week

2–3 weeks	£384
4–7 weeks	£364
8–11 weeks	£344
12–23 weeks	£324
24+ weeks	£314

Cambridge FCE/CAE/CPE fees per course

16 Jan—09 Mar (8 weeks)	£2752
16 Apr—08 Jun (8 weeks)	£2752
08 Oct—30 Nov (8 weeks)	£2752

Course fees include...

- Access to course materials
- Individual report
- Self-study resources
- Internet and WiFi
- Tutor Support at lunchtime
- Social activities



IELTS and Cambridge English

Realise your potential

If you require a formal certificate for work or study purposes, an IELTS or Cambridge English examination is an ideal way to prove your level of English. As the largest open exam centre in Scotland, Basil Paterson offers both IELTS and Cambridge English exams.

- Basil Paterson is the largest exam centre in Scotland, with over 3500 candidates taking examinations every year.
- IELTS and Cambridge English exams are internationally recognised by thousands of companies, organisations and universities.
- IELTS is the most widely recognised test of English – perfect for study/jobs.
- Choose to sit your IELTS exam in either of our exam centres – Edinburgh or Aberdeen.
- Cambridge English Exams offer an important qualification for life – perfect for your CV.

"I took the best decision when I did my IELTS course because I got the score I needed on my first attempt. Definitely for me Basil Paterson was the best choice."

Juan Carlos, Colombia

IELTS examinations

Examination Dates

07 January	19 May	25 August
21 January	26 May	01 September
04 February	09 June	22 September
18 February	16 June	13 October
10 March	30 June	27 October
31 March	07 July	03 November
14 April	21 July	17 November
21 April	28 July	08 December
28 April	04 August	
12 May	11 August	

Dates in bold are Academic and General Training test dates

Dates not in bold are Academic test dates only

2012 IELTS examination fee: £125

Cambridge English examinations

Cambridge English: Key (KET)	Pre-Intermediate level (A2)
Cambridge English: Preliminary (PET)	Intermediate level (B1)
Cambridge English: First (FCE)	Upper-Intermediate level (B2)
Cambridge English: Advanced (CAE)	Advanced level (C1)
Cambridge English: Proficiency (CPE)	Proficiency level (C2)

Examination Dates

KET - 17 March, 07 June, 13 October, 07 December
PET - 17 March, 07 June, 13 October, 07 December
FCE - 10 March, 19 May, 12 June, 27 July, 23 August, 04 December
CAE - 17 March, 12 May, 13 June, 26 July, 24 August, 05 December
CPE - 10 March, 14 June, 06 December

Examination Fees September 2011 – July 2012

KET/PET exams:	£70
FCE:	£110
CAE:	£115
CPE exams:	£120

August, October and December 2012 fees are different from the fees above – please contact us for more information.



Combination Course

Develop your skills

Additional one-to-one classes can be added to your course for increased focus on your specific requirements and personal needs. In the group classes you will expand your language and receive plenty of practice opportunities with fellow students, while in individual tuition you will get the chance to work on areas of the language that are most important to you.

This course is an ideal way of combining your skills and learning how to develop through both group classes and on a one-to-one basis. Your teacher will design each lesson carefully to suit your requirements and content can vary from fluency practice to legal English.

- Start any Monday of the year
- Minimum age 17
- Small class size – max 10 per class
- All levels catered for, from Beginner to Advanced
- Study in same building as native speakers

The course was very useful for helping me improve my oral expression and grammar. The course was perfectly organized and thanks to the different classes, I achieved my objectives.”

Matthieu, France

Combination courses

15 hours Part-time + 5/10 hours One-to-one

09.00—10.00	Language Focus
10.00—10.15	Morning Break
10.15—11.15	Language Practice
11.15—11.30	Morning Break
11.30—12.30	Spoken Performance Workshop
12.30—13.30	Lunch Break
13.30—14.30	Tailored one-to-one class Combination5 + 10
14.30—14.45	Afternoon Break
14.45—15.45	Tailored one-to-one class Combination10

Course fees per week

	Combination5	Combination10
2–3 weeks	£624	£960
4–7 weeks	£604	£940
8–11 weeks	£584	£920
12–23 weeks	£564	£900
24+ weeks	£554	£890

For one week price please add supplement of £80 to the 2-3 week price

Course fees include...

- Access to course materials
- Individual report
- Self-study resources
- Internet and WiFi
- Tutor Support at lunchtime
- Social activities



Individual Tuition

Focus on your progress

Our individual tuition courses offer a personalised, intensive English language programme allowing you to make maximum possible progress for your individual needs. You can choose to focus on specific language development as well as specialised requirements, such as language for career purposes. Offering a flexible tuition programme, our experienced teachers also adapt your classes to suit your individual learning style.

Whether it is Business English, exam preparation, or extra time developing one particular area of your language knowledge, we tailor each class to ensure you make maximum progress.

- Start any Monday of the year
- Minimum age 17
- Small class size – max 10 per class
- All levels catered for, from Beginner to Advanced
- Study in same building as native speakers
- Choose anything from 1-40 hours tuition per week

“The school is great and the teachers were very interesting—they made the classes interesting too”

Jelena, Serbia

Individual tuition

Specialist areas include:

Business English

Focus on language vocabulary and practice of business situations to improve your confidence and performance in meetings, presentations, telephoning and e-mailing.

Fluency Practice

Intensive practice of your speaking skills, with correction and language input tailored directly to you.

Cambridge Exam Preparation

Exam techniques, practice and feedback relating specifically to your exam and focussing on your individual needs.

Course fees per week

	5 hours	10 hours	15 hours	20 hours	25 hours
1 week	£416	£752	£1088	£1424	£1760
2-3 weeks	£336	£672	£1008	£1344	£1680
4-7 weeks	£316	£652	£988	£1324	£1660

Course fees include...

- Access to course materials
- Individual report
- Self-study resources
- Internet and WiFi
- Tutor Support at lunchtime
- Social activities



Accommodation

Living and learning in Edinburgh

We want your experience in Edinburgh to be as enjoyable as possible and for that reason we offer a wide choice of accommodation options. Whether you prefer an immersed experience in a homestay or require more independence, our dedicated accommodation department will help you find the right option.

Homestay (available year round)

- Self-catering, half-board and executive options
- Families carefully selected and regularly checked
- Single room accommodation
- All homestays located within Edinburgh city
- No two students of the same language together

Price per week:

Standard single self-catering	£155
Standard single half-board	£175
Single with private bathroom half-board	£275

Half-board = breakfast and evening meal every day

Apartments (available year round)

- Self-catered apartments available
- Variety of options - from shared flats to studios
- Access to kitchen to prepare your own meals
- Typically located within 15-20 minutes of school
- All students guaranteed a single room

Price per week:

Standard single self-catering **from £250**

University residence (July/Aug)

- More independence
- 15 minutes by bus from the city centre
- Students guaranteed a single room
- Bed and breakfast and self-catering available

Price per week:

Standard single bed and breakfast	£300
Standard single half-board	£375
Single with private bathroom half-board	£500

I loved my family, they were so nice and welcoming. I'll miss them for sure. Everyone here was really friendly and helpful."

Larissa, Switzerland



Social Activities

Beyond the classroom

Your learning experience doesn't stop at the end of class. The social and cultural activities we offer our students aim to extend your learning day and provide an excellent opportunity to practise your English and make new friends.

We find that students progress quicker when they use English in the real world and for that reason we provide a varied programme of activities. At least 8 activities per week are offered during the summer and at least 3 activities per week for the rest of the year.

- A chance to practise your English in a more relaxed and informal setting
- Open to both our international and UK students
- Range of free and low-cost activities
- A variety of activities to suit all ages and interests

Basil Paterson College is fantastic possibility to spend the best holiday in your life! I appreciate the interesting social programme - everything is well organised and there are a lot of nice people."

Barbara, Poland

Sample programme

Mon	Walk around the Botanic Gardens
Tue	Scottish ceilidh dancing
Wed	Ghost tour of old Edinburgh
Thu	International food evening
Fri	Folk music in a local pub
Sat & Sun	Loch Ness weekend trip

Please note some activities carry a charge

Your Scottish Experience

5 attractions you should not miss!



Scottish ceilidh dancing

Energetic, great fun - we'll teach you all the steps to traditional Scottish dances.



Edinburgh Castle

Pay a visit to see the Castle and listen out for the one o'clock gun!



Walk around Botanic Gardens

A green retreat just a few minutes walk from the city centre.



Scottish whisky tasting

Sample Scotland's national drink with a talk from an expert (over 18s only!)



Ghost tour of old Edinburgh

Prepare to be shocked and entertained with haunting tales of the city's past.



Travel

Getting here

You can fly directly to Edinburgh from over 100 destinations worldwide. The city is just a 1 hour flight from London and is also well connected to other major UK cities by train.

Airport arrivals

Edinburgh International Airport is only 7 miles from the city centre, with the journey taking just 25 minutes. There are a number of regular transport services to the city centre:

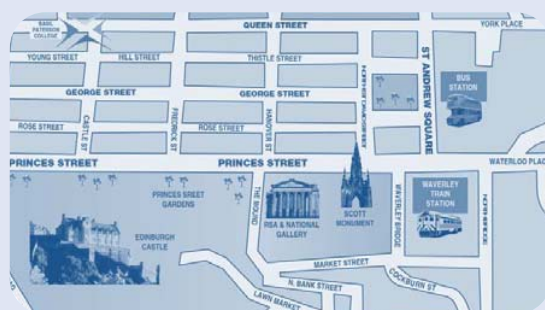
- **Shuttle bus services** – Operate every 10 minutes during the day, and every half hour at night. A return ticket will cost around £6. You will find the bus stop just outside the airport terminal.
- **Taxi hire** – Official black taxis are available from directly outside the airport terminal. Expect to pay around £30 for a single journey to the city centre.
- **Airport transfer** – Basil Paterson can organise a transfer directly from the airport to your accommodation. This will cost £50 each way.

Public transport

The city is further connected with an excellent public transport system.

Public transport available in Edinburgh:

- **Buses** – Connecting the city and its outskirts with a vast network of routes. Lothian buses sell weekly and monthly tickets which offer unlimited travel.
- **Trains** – The two main train stations, Waverley and Haymarket, link Edinburgh to cities and towns across the UK.
- **Taxis** – There are taxi ranks located throughout the city. A typical short journey should cost between £5 and £10.



Terms and Conditions

How to book a course

To secure a place on a Basil Paterson College course, please return the Enrolment Form together with payment of a non-refundable deposit, or book online at www.basilpaterson.co.uk.

Payment of fees

On receipt of the application and deposit a letter of confirmation is sent with a Statement of Fees which should be settled at least 30 days before the course starting date. In the case of registration less than 6 weeks before the course starting date, the full amount of the cost of the course must be sent with the Enrolment Form.

PLEASE NOTE: students will not be allowed to start their course unless FULL PAYMENT has been received by the School. All bank charges must be paid by the student.

PLEASE NOTE: if you require a visa the School will provide the visa letter or Certificate of Acceptance of Studies (CAS) only when full payment has been received by the School. All bank charges must be paid by the student. In the event of an unsuccessful application all fees will be returned in full, less the cost of the CAS.

Accommodation address

Students who have requested the School to book homestay accommodation on their behalf will receive details of their address at least 5 days before the course starting date, unless they enrol late. This enables those students travelling independently to let the homestay host know of their approximate time of arrival.

Conditions for cancelling or changing a course by the student

- If the School receives the cancellation before the course starting date, the School will retain the deposit.
- After the course has started, a student must give 10 days' written notice to the Principal of changes to or cancellation of a course. A cancellation fee equivalent to 1 week's course fees will be charged. Refunds cannot be made for non-attendance, absence due to illness or any other cause.
- If a student wishes to be absent from the course for 1 or 2 weeks for the purposes of taking a holiday s/he must give the Principal at least 2 weeks' notice in writing.
- Students who choose to exchange their original choice of course for one of greater value must pay the difference between the two at the time of requesting the upgrade.
- Any refund due when a course is changed or cancelled, or a holiday taken, will be paid to the person who paid for the student's course at his/her home address at the end of the course. 'End of the course' here is defined as the last date of the course specified on the Enrolment Form (i.e. if a student books a 12 week course and decides to leave after 4 weeks s/he will not be refunded until 12 weeks after the start of the course).
- If a student is denied a student visa or a study permit and provides the School with a copy of the rejection letter on or before the first day of classes, the School will refund the course fees.

Change or cancellation of a course by the School

Sometimes it is agreed between the School and a student that it would be beneficial for the student to be moved to another School course. When this happens only a course of at least equivalent cost

will be offered by the School. The School reserves the right to cancel a course, or make changes to course arrangements, without liability, if forced to do so for reasons beyond its control. If this happened, the School would seek to offer alternative arrangements, dates or venues.

If the School cancelled a course booked and paid for by a student in accordance with these terms other than for reasons beyond its control, and did not offer an alternative acceptable to the student, the School would pay compensation as follows:

- Where the cancellation is before the start of the course, compensation equal to the deposit paid by the student or
- Where the cancellation is after the start of the course, compensation equal to one week's fees.

Liability and insurance

Students should make sure that they organise their own travel insurance to cover medical costs and repatriation costs in the case of an illness or accident. The School acts only as an intermediary between its students and travel organisations and between students and homestay host. Unless and to the extent caused by the School's negligence, the School cannot be held responsible for any delay or accident during a journey nor for any incident which may happen during the student's stay with the homestay host.

The School will, however, endeavour to defend the student's interests in the event of breach of contract on the part of the travel organisation or the homestay host. The School reserves the right not to allow on the course a student suffering from any illness, medical condition, or mental or physical disability which has not been disclosed on the Enrolment Form. This brochure, issued by the School, gives the only terms and information that can be referred to in the event of a disagreement between the student and the School. These terms and conditions are governed by Scottish law and do not affect your statutory rights under Scottish law.

Personal information and photographs

We use the personal information that you give us, including information about your health and religious or dietary requirements, to perform our contract with you. We may also use it to ensure that we comply with UK law, for internal training, or to send you further information about our courses and services. We do not share your details with third parties other than as necessary to perform our contract with you.

The information you give us is kept securely on our computer system, and is accessible by the schools and offices in the group of companies to which the School belongs, including those outside the European Union. If you do not want to receive further information from us, please write to us at the address below. Please contact us if you want to see a copy of the information we hold, or have questions about our use of your information.

The School reserves the right to use photographs taken during courses to illustrate its promotional material. If a student wishes that his or her photo should not appear in this material, they should write to the School within one week of the photo-shoot. These photos have no commercial or contractual value.

Information about the School

In these terms "the School" means Basil Paterson College. Courses at the School are operated by The Language School Company Limited, a company registered in England and Wales under company number 01293463 and with registered office at: 38 Binsey Lane, Oxford, OX2 0EY United Kingdom.
Tel: +44 (0)1865 258300
Fax: +44 (0)1865 244696

All information correct at time of going to print.



Accredited by the



for the teaching
of English



UNIVERSITY of CAMBRIDGE
ESOL Examinations

Authorised Centre

IELTS[™]
English for International Opportunity

ENGLISHUK
member

**Visit
Scotland**[™]



Cours-de-langues.fr

Le site indépendant de
réservations de cours
de langues le plus visité
au monde

Réservez votre cours à Basil Paterson, Edinburg pour le prix le plus bas dans le monde entier
et lisez les commentaires pour Basil Paterson, Edinburg d'anciens participants au lien suivant

<http://www.languagecourse.net/cours-de-langues/ecole-basil-paterson-edinburgh.php3>

Nos experts en séjour linguistique se feront un plaisir de vous aider.

+33-(0)1-78416974
info@cours-de-langues.fr