

COURSES

GENERAL PORTUGUESE COURSES

GROUP COURSES (MAX. 8 STUDENTS) 3 LESSONS/DAY

Group Courses are organised in modules of 4 weeks. Every month Groups start at all levels (from Beginner to Advanced). Courses are progressive from the starting dates, but apart from absolute beginners who must begin on the starting dates, students can join a group at any time if vacancies exist at the suitable level. Groups have a maximum of 8 participants so that monitoring and assessment are continuous and personalised.

GROUP + WORKSHOP COURSES (MAX. 8 STUDENTS) 5 LESSONS/DAY

In this programme, students join the General Portuguese Groups in the morning in the designated starting dates.

In the afternoon there will be 2 lessons per day, with different topics. These topics will range from Conversation, Vocabulary drills, Grammar practice, Presentations, Role Playing to other activities the students choose in the class.

INDIVIDUAL AND PRIVATE GROUP COURSES

5, 10, 15, 20, 25, 30 or 35 lessons/week. 1 student or 2+ students who book the course together.

These courses are organised according to the students' specific requests and time availability and may include different professional and cultural themes if requested. The topics of the Portuguese for Special Purposes courses can also be included.

Students are welcome to bring any kind of documentation they may need to work on.

COMBINED COURSES

Group, 3 lessons/day (morning) +
Individual 1, 2, or 3 lessons/day (afternoon).

Ideal solution for those who want to work further improving oral skills, review the work done in the morning lessons or work in a specific professional field.

It is also possible to combine Group Course + Private Group.

EASTER, SUMMER AND CHRISTMAS COURSES (MAX. 12 STUDENTS)

Group Course 3 lessons/day for 2 weeks.

Beginner (I) and Pre-Intermediate (III) Levels.

Courses that coincide with school breaks, focused on oral communication skills, with intensive practice.

PORTUGUESE + PROGRAMMES

PORTUGUESE + SURF

Combination of language course in the morning and Surf lessons in the afternoon in beaches around Lisbon.

Transportation and equipment are included.

PORTUGUESE + VOLUNTEERING

Combination of language course in the morning and Volunteer work in the afternoon in the Lisbon area.

Placements available for different types of work and length of stay.

PORTUGUESE + PROFESSIONAL INTERNSHIPS

Language course of 6 to 12 weeks followed by an unpaid professional internship (full-time from 12 to 24 weeks) in a company in or around Lisbon.

Availability in several professional areas.

PORTUGUESE FOR SPECIAL PURPOSES

INDIVIDUAL LESSONS OR PRIVATE GROUPS

These courses aim at providing students with a further spoken and written language practice while exploring a specific field.

- Themes:
- . Banking
 - . Business Portuguese
 - . Computer Science
 - . Hotel Industry
 - . Insurance
 - . Interpreting
 - . Law
 - . Medicine
 - . Translation

BRAZILIAN AND AFRICAN PORTUGUESE

INDIVIDUAL LESSONS OR PRIVATE GROUPS

Available for starting at any date for chosen length of course.

Specific materials and experienced teachers of Brazilian and African origin or background.

Students will not only learn the characteristics of the chosen variant, but will also get information on the specific social and economical traits of that country.

I tuoi vantaggi quando prenoti su

LanguageCourse.net



Prezzi più bassi rispetto alla prenotazione diretta con la scuola



MIGLIORI termini di cancellazione e di pagamento



Corso online **GRATUITO**



NESSUNA spesa di agenzia

Chiedi una consulenza gratuita ai nostri consulenti per aiutarti a trovare la scuola migliore a Faro

+39 800 934 127



PRENOTA QUI al prezzo più vantaggioso possibile



Il link sottostante può essere aperto in versione PDF

Paga meno che prenotando con la scuola



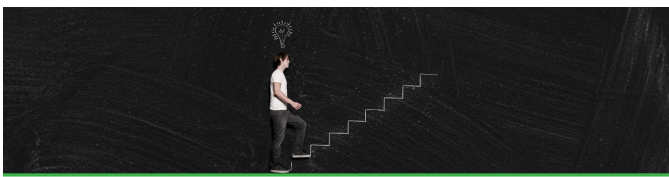
Trustpilot Eccellente **4.8/5**



1403 recensioni

[Mostra tutte le 1403 recensioni di LanguageCourse.Net su Trustpilot](https://www.languagecourse.net/corsi-di-lingua/scuola-cial-centro-de-linguas-faro.php3)

<https://www.languagecourse.net/corsi-di-lingua/scuola-cial-centro-de-linguas-faro.php3>



TEACHERS' TRAINING COURSE

ENSINO DE PORTUGUÊS LÍNGUA ESTRANGEIRA (EPLÉ)

Course designed for native and non-native teachers of Portuguese as a Foreign Language in public or private institutions in or outside Portugal.

Organised four times a year, 6 lessons/day for 2 weeks.

CIAL may organise a course on any date for a minimum of 4 students booking together.

DIPLOMAS, CERTIFICATES AND EXAMS

CIAL CERTIFICATES

CIAL has developed its own examination scheme and CIAL's Attendance and Completion Certificates are widely known and recognised.

Attendance Certificate: At all levels and courses

Completion Certificate: At all levels after written test grading 75% or plus

OFFICIAL CERTIFICATES FOR PORTUGUESE AS A FOREIGN LANGUAGE (PLE)

Students can be prepared for the:

Exams for CAPLE Certificates and Diplomas (Lisbon University).

Exams in May, July and November.

CIAL can enrol students for these exams at an extra fee.

Exams for CILP Certificate (Universidade Caxias do Sul, Brazil).

Exams are taken at the school with Brazilian teachers, at any time.

CULTURAL PROGRAMME

One of the main features of CIAL's programmes is the monthly programme of activities available for students in both schools which includes movie screenings and lectures in the school, guided visits to museums and monuments, evening outings to live music concerts, bars, and Saturday half-day visits to points of interest.

These activities are included in the course fee, and are subject to a minimum number of inscriptions.

Also available are full-day Sunday excursions and typical dinners, at an extra cost, to be paid locally, also subject to a minimum number of inscriptions.

Students are accompanied by experienced monitors who turn all these activities into pleasant experiences of Portuguese culture.

ACCOMMODATION SERVICE

Private home accommodation is an important part of most students' stay. It helps students gain familiarity with the language by speaking to their host. CIAL's carefully selected homes offer accommodation and breakfast as well as a family environment.

Students are placed in individual bedrooms and will be the only native speaker of their language in the house.

The host may be a family or an individual.

The school is reached either by foot or by public transport, never more than a 15-30 min. ride.

When students prefer not to stay in a home, CIAL is happy to help find suitable hotel, hostel or apartment accommodation. Please ask for the list of places that offer special rates to our students.

TRANSFER SERVICE

A transfer service is available for students who wish to be met at the Airport (or train/bus station). Students are welcomed by a member of CIAL staff and taken, usually by taxi or private car, to the accommodation of their choice.

STUDENT SERVICES

CIAL has a Student Service that will advise and help students not only in case of problems or doubts related with the Course, the Accommodation or the Social and Extra-Curricular Programme, but also with any other aspect of their stay in Portugal.

Students should get in touch with the person in charge of this

I tuoi vantaggi quando prenoti su

LanguageCourse.net



Prezzi più bassi rispetto alla prenotazione diretta con la scuola



MIGLIORI termini di cancellazione e di pagamento



Corso online **GRATUITO**



NESSUNA spesa di agenzia

Chiedi una consulenza gratuita ai nostri consulenti per aiutarti a trovare la scuola migliore a Faro

 +39 800 934 127



PRENOTA QUI al prezzo più vantaggioso possibile



Il link sottostante può essere aperto in versione PDF

Paga meno che prenotando con la scuola



Trustpilot Eccellente **4.8/5**



1403 recensioni

[Mostra tutte le 1403 recensioni di LanguageCourse.Net su Trustpilot](#)

<https://www.languagecourse.net/corsi-di-lingua/scuola-cial-centro-de-linguas-faro.php3>