

## English Language Training & Academic Programmes



General English  
Examination & I.T. Courses  
University Foundation  
University Access / Pre-Masters  
Fast Track to a Degree & MBA  
WorkSkills & Internships  
Business English  
Teachers' Courses  
University Summer School  
Family Study Holidays



## Canterbury, UK



LanguageCourse.de

Weltweit meistbesuchte  
unabhängige Site für  
Sprachkurs Buchungen

Kurs buchen bei Concorde International, Canterbury für den weltweit niedrigsten Preis  
und lesen Sie Bewertungen zu Concorde International, Canterbury von ehemaligen Teilnehmern auf  
<http://www.languagecourse.net/schule-concorde-international-canterbury.php3>

Unsere Sprachreise-Experten stehen Ihnen gerne zur Verfügung.

0800-999 88 84  
[info@languagecourse.de](mailto:info@languagecourse.de)



Canterbury Cathedral



| Course Title                                | Hours | Class Size | Start Dates                 | Page |
|---|-------|------------|-----------------------------|------|
| General English Courses                     | 15-25 | 12         | Any Monday – all year round | 4    |
| Examination & IT Courses                    | 15-25 | 12         | Any Monday – all year round | 5    |
| University Access Course                    | 25    | 12         | September / January / April | 6    |
| Pre-Masters Programme                       | 25    | 12         | September / January / April | 6    |
| Business English Courses                    | 15    | 4          | Any Monday – all year round | 7    |
| Combination Courses                         | 25-30 | 1-12       | Any Monday – all year round | 7    |
| Intensive Group Six                         | 15-25 | 6          | July + August               | 7    |
| One to One                                  | 5-30  | 1          | On request                  | 7    |
| ABE Certificate in Business Management      | 15-25 | 12         | September / January         | 8    |
| ABE Diploma in Business Management          | 15-25 | 12         | September / March           | 9    |
| ABE Advanced Diploma in Business Management | 15-25 | 12         | September / March           | 9    |
| WorkSkills Plus Programme                   | 25    | 12         | Any Monday – all year round | 10   |
| Internship & Work Experience                | 25    | 12         | Any Monday – all year round | 11   |
| Adult Summer Courses—Canterbury             | 15-25 | 12         | July + August               | 12   |
| Teachers' Courses                           | 25    | 12         | July + August               | 13   |
| Family Study Holidays                       | 15-25 | 6-12       | July + August               | 14   |
| Accommodation & Transfers                   |       |            |                             | 15   |



England's most famous Cathedral city, Canterbury, is home to three universities with 20,000 students.

There are many busy cafés, bars, clubs and pubs and a modern shopping centre; you will really enjoy this city whether you are here for 2 weeks or 12 months!

Canterbury welcomes almost 3 million visitors each year and there is always something to see and do. Concorde International Study Centre is in the heart of the city.

Around the corner from the study centre you can find everything you need: English books and CDs, a French wine bar or an Italian café, supermarkets with international food or our English and continental open-air market twice a week... it's all on our doorstep!

Three major European capitals are within easy reach (London – Victoria 90 minutes; Paris Gare du Nord 2 1/2 hours; Brussels Central 3 hours).



### The Teaching

- Full time, qualified and experienced teachers
- Committed teachers who will do their best to help you succeed
- Personal academic counselling available from course tutors
- A balanced programme of communication and comprehension plus the opportunity to take internationally recognised examination
- Continuous monitoring by your class tutors to check your progress
- Consistently excellent pass rate for exams and university places



### The Study Centre

Located in the centre of Canterbury

The following school facilities and services are provided for you:

- A self study room with language laboratory, worksheets, listening practice material and video
- Books for graded readers to read in their leisure time
- A coffee bar and student lounge with music, TV and video
- A computer room with free access to the internet and student e-mail facilities
- Personal Wi-Fi available in school
- Course counselling for university entry
- 24 hour Welfare Officer for your accommodation/health/safety
- Work Experience Consultant for work placements/internships
- Friendly and helpful staff ready to ensure you enjoy your stay
- Airport transfers are arranged on request
- Course books available for homework on payment of a small refundable deposit
- Weekly social activities

### 10 reasons to choose Concorde International

- ✓ Courses are accredited by the British Council. We are a member of English UK, The College of Teachers and also accredited by the Association of Business Executives
- ✓ Courses start every Monday throughout the year
- ✓ A Concorde hour is a full 60 minutes
- ✓ Our teachers are highly skilled and experienced
- ✓ Students regularly achieve excellent examination passes
- ✓ Courses improve future career prospects
- ✓ Our courses represent excellent value for money
- ✓ Mixing with students of other nationalities makes for confident communication
- ✓ Canterbury is a cosmopolitan city close to London and with easy access to Paris and Brussels
- ✓ 37 years of Quality, Care and Service

*“Canterbury is a good place to study and the teachers in Concorde International are very good!”*

Sung, Kyung-Cho, from Korea



Canterbury



# General English Courses

- For students aged 18+
- Elementary to Advanced Levels
- Beginners accepted at the start of a new term

This course provides a balance of grammar, reading, listening, speaking and writing to improve both accuracy and communication skills.

*“ Great classes — they were always interesting! ”*

Fabio, from Italy

### Features of the course

- 15 or 25 hours per week
- Average 8-10 students per class with a maximum of 12
- Flexible enrolments starting every Monday
- Minimum 2 weeks, discounts for long term bookings
- A good mix of nationalities: students from 55 different countries attended our courses in 2009

### 15 hours - Monday to Friday

**Focus on Grammar and Accuracy**  
09.00 – 10.30

**Coffee Break**  
10.30 – 11.00

**Focus on Skills and Fluency**  
11.00 – 12.30

Morning classes focus on the accurate use of English. Students learn and practise new grammar functions and vocabulary and also develop their knowledge of English using set course books and authentic materials.

- Grammar in real life contexts
- Pronunciation practice
- Written and spoken accuracy
- Skills – reading, writing, listening and speaking

### 10 hours - Monday to Thursday

**Focus on Communication**  
13.45 – 15.15

**Tea Break**  
15.15 – 15.30

**Focus on Skills and Fluency**  
15.30 – 16.30

Afternoon classes focus on improving oral communication and fluency, vocabulary extension and skills for real life purposes.



## Examination & I.T. Courses

- For students aged 18+
- Elementary to Advanced Levels

At Concorde International you can choose to study for the IELTS, Cambridge, TOEFL and TOEIC examinations.

### Feature of the course

- Intensive preparation with practice exam papers
- Practice with academic tests
- Special coaching for examination techniques
- Individual counselling for exams
- Regular opportunities to enter for examinations
- External examinations can be arranged with examining bodies
- Examination fees vary and must be paid at the time of booking.

*“I have been impressed by the friendliness of the teachers and the academic atmosphere. It has given me such a great opportunity to practice my English!”*

Leon, from France



### Diploma in UK Justice

A fully accredited BTEC level 5 programme including 13 weeks training and professional visits.

Email: [access@concorde-int.com](mailto:access@concorde-int.com)



Concorde International Study Centre is an accredited **Microsoft Office Academy** and an authorized Microsoft Office specialist testing centre. In the computer suite you can choose from over 400 different computer based courses.

Microsoft qualified tutors are always present to offer assistance.



### The Weekly Timetable

**15 hours Monday—Friday**  
09.00 – 12.30

**10 hours Monday—Thursday**  
13.45 – 16.30

FCE preparation  
CAE preparation  
General English

and / or

IELTS/TOEFL/TOEIC preparation  
General English  
Microsoft Academy Modules



Canterbury



# University Access Programme

## What does the programme lead to?

The programme is essential preparation for students entering higher education at a British university for foundation, undergraduate or master's level study.

## What kind of progression can I expect?

We have a first class reputation for placing students at prestigious universities.

Our University Placement Counsellor will guide you through the application process and provide advice and support.

*“ Successful completion of my course will be the first step towards achieving a Master's degree in the UK. In September I join the University of Birmingham! ”*

Demi Wang, from China - Access Masters

## What qualification will I achieve?

The Concorde International University Access Course is an internally accredited programme with an excellent reputation. You will receive a Concorde International 'Certificate of Attainment' at Pass, Merit or Distinction level.

## What will I learn?

The programme involves a heavy focus on

- academic study skills:
- library skills
- research methods
- note-taking
- summarising and paraphrasing
- listening for gist and main ideas
- reading for academic genres

You will be expected to contribute to class seminars, to take part in structured debates and to build up your presentation skills.

In the afternoons, you will work towards the IELTS examination, developing effective examination techniques. We have an excellent track record for improving students' IELTS scores, enabling them to enter their chosen university.

## factfile

| Academic Year      |  |
|--------------------|--|
| Start Dates        | September, January, April  |
| Duration           | 12, 24 or 36 weeks   |
| Hours / Week       | 25   |
| Entry Requirements | September: IELTS 3.5 / TOEFL 343-407<br>January: IELTS 4.5 / TOEFL 447-483<br>April: IELTS 5.5 / TOEFL 533-570<br><br><b>Access Undergraduate:</b> Completion of high school qualification in home country<br><b>Access Masters:</b> Completion of bachelor's degree in home country<br><b>Access Transfer:</b> Transcript from completed university academic year in home country |
| Assessment         | monthly testing, 5-6 assignments, 3 presentations  |
| Accreditation      | Concorde International   |



## Business English Courses

- For students aged 21+
- Beginner to Advanced Levels

Our Business English Courses are for professionals, managers and students who either already use English in their work or wish to improve their career prospects by developing further their English language skills. The minimum age required for these courses is 21.

Courses run all year round and we operate a system of flexible enrolment, allowing you to start on any Monday.

### Intensive Business English Course

- Pre-intermediate to Advanced Levels
- Maximum 4 participants per class
- 15 hours per week (afternoon)

This may be combined with General English or One-to-One in the mornings.

### One-to-One

- Beginner to Advanced Levels
- 10, 15 or 25 hours per week

The timetable is arranged at your discretion and will be focused around your specific needs. Clients often choose this course if maximum progress must be made in a short time.

### Combination Options

- To provide you with the additional opportunity to focus on your individual needs as well as communicating in a group.
- General English + Intensive Business English  
Pre-intermediate to Advanced
  - General English + One-to-One  
Beginner to Advanced

### July / August Group 6 classes

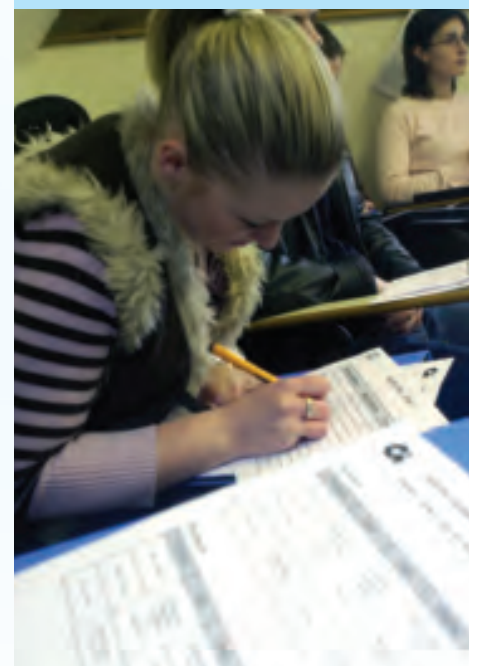
- Intensive Business English + One-to-One

*“The teachers were highly motivated and always helpful. I like the atmosphere of a small class!”*

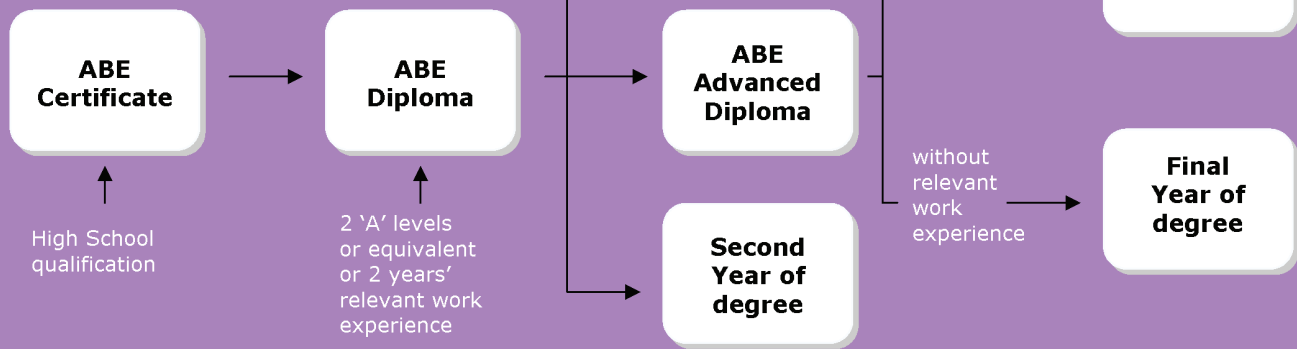
Nicole, from Germany

### Course elements of Business English include:

- Telephoning, letter and report writing
- Extracting general/specific information
- Distinguishing between main and subsidiary information
- Interpreting graphs and charts and diagrams
- Negotiating and participating effectively in meetings and seminars
- Preparing for presentations (which may be videoed and analysed)
- Discussing international business news and current affairs



## Your Fast Track to a Degree & MBA



## University Business Programmes

### University Foundation Programme ABE Certificate in Business Management

- N.Q.F. Level 3 -

#### What does the programme lead to?

The programme leads to entry to a degree course in a business related subject at a British university. As an internationally recognised qualification, the ABE certificate also improves employment prospects.

#### What kind of progression can I expect?

We have a first class reputation for placing students at prestigious universities.

Our University Placement Counsellor will guide you through the application process and provide advice and support.

#### What qualification will I achieve?

A Certificate in Business Management equivalent to British A-LEVELS (UK National Qualifications Framework level 3) and accredited by the ABE, The Association of Business Executives, recognized by QCA.

#### What skills will I gain?

Whether you choose the full academic year or accelerated, fast-track route, you will be introduced to key business concepts through the core modules and encouraged to develop critical thinking and creativity.

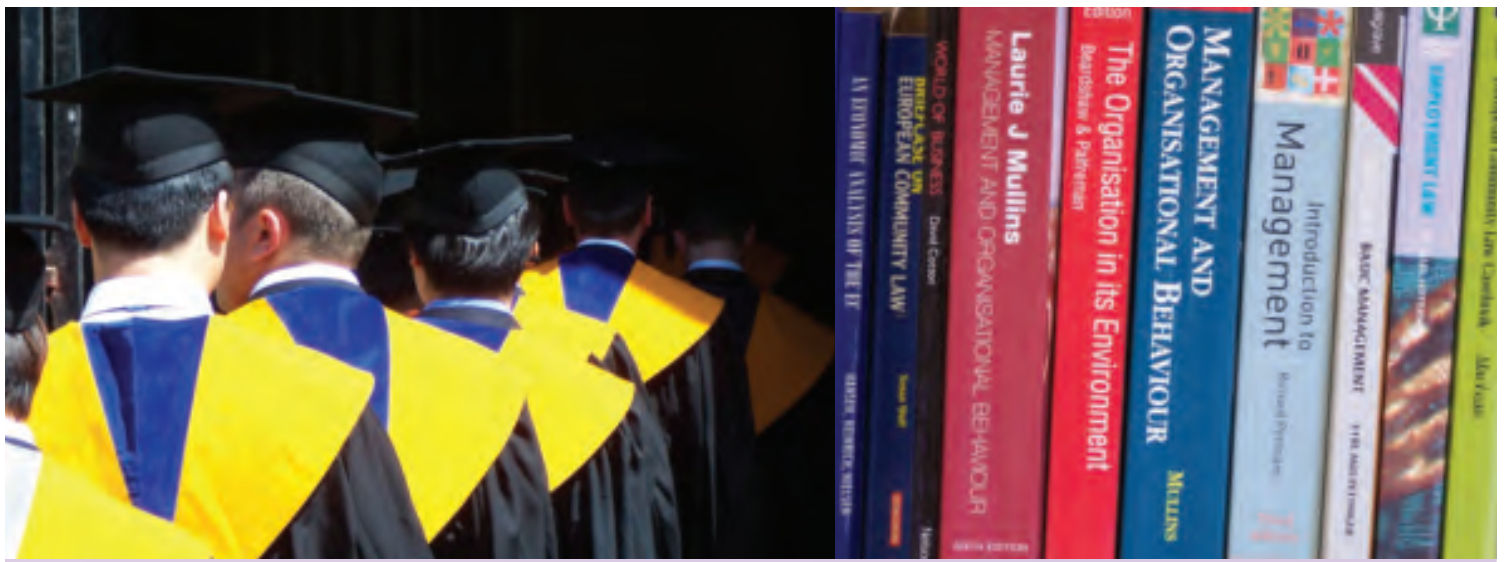
The support modules help you to acquire study skills and the fluency that enables you to present your own ideas effectively in English. Academic Study Skills classes equip you with the tools for academic excellence, whilst intensive IELTS preparation will help you to develop effective examination techniques.

### factfile

| ABE Certificate in Business Management |  | Fast Track  |
|--|--|---|
| Academic Year                          |  |   |
| Start Dates                            | September  | January   |
| Duration                               | 32 weeks   | 22 weeks  |
| Hours / Week                           | 25 (Inc IELTS)   | 27 (Inc IELTS)  |
| Level                                  | NQF Level 3  | NQF Level 3   |
| * Entry Requirements                   | IELTS 5.0 / TOEFL 483-533<br>+ successful completion of high school qualification in home country  | IELTS 5.5 / TOEFL 533-570<br>+ successful completion of high school qualification in home country |
|  | * We offer intensive English + IELTS training and a Summer Pre-sessional Course for those students who do not have the required English language level.  |   |
| Core Modules                           | <ul style="list-style-type: none"> <li>• Introduction to Business</li> <li>• Introduction to Business Communication</li> <li>• Introduction to Quantitative Methods</li> <li>• Introduction to Accounting</li> </ul> |   |
| Support Modules                        | <ul style="list-style-type: none"> <li>• Academic Study Skills / IELTS</li> <li>• Business English</li> </ul>  |   |
| Assessment                             | <ul style="list-style-type: none"> <li>• Examination per module</li> <li>• Frequent class tests to check progress</li> </ul>   |   |
| Accreditation                          | The Association of Business Executives   |   |

*“The Foundation Course gave me the ability to join a degree in Business at the University of Kent. After my head start with Concorde, I passed my first year with flying colours! ... this summer I graduated with a 2:1!”*

Haidar, from Iraq



## Approved pathway to the UK's best business degree programmes!



### ABE Diploma in Business Management    ABE Advanced Diploma in Business Management

- N.Q.F. Level 5 -

- N.Q.F. Level 6 -

The Diploma allows you to broaden your knowledge and start to specialise. An ideal level if you are already in the sector and are seeking progression.

Typical jobs for Diploma holders include marketing executives and management training roles.

Diploma holders can also get exemptions from units of many Bachelors degree programmes.

The Advanced Diploma focuses on strategic areas of management.

Typical jobs for Advanced Diploma holders include marketing managers and finance managers.

Advanced Diploma holders can also fast-track to the final year of many Bachelors degree programmes.

Advanced Diploma holders with relevant work experience can fast-track directly to a Masters degree at a selection of universities.

#### factfile

| ABE Diploma in Business Management |   |
|------------------------------------|---|
| Start Dates                        | March and September   |
| Entry Requirements                 | <ul style="list-style-type: none"> <li>You must have completed the ABE Certificate (in any programme)</li> <li>Or have 2 GCE A-Levels and 4 GCSEs at Grade C or above</li> <li>Or possess a BTEC National award</li> <li>Or equivalent NQF level 3 qualification</li> <li>Students with at least 2 years' work experience can also apply, without any of the above qualifications</li> </ul>  |
| Core Modules                       | <p><i>Part 1</i></p> <ul style="list-style-type: none"> <li>Economic Principles and their Application to Business</li> <li>Organisational Behaviour</li> <li>Financial Accounting</li> <li>Quantitative Methods for Business and Management</li> </ul> <p><i>Part 2</i></p> <ul style="list-style-type: none"> <li>Marketing Policy, Planning and Communication</li> <li>Human Resource Management</li> <li>Management in Action</li> </ul> <p><i>Plus two from</i></p> <ul style="list-style-type: none"> <li>Managerial Accounting</li> <li>Principles of Business Law</li> <li>System Analysis and Design</li> </ul> |
| Assessment                         | <ul style="list-style-type: none"> <li>Examination per module</li> <li>Frequent class tests to check progress</li> </ul>  |
| Accreditation                      | The Association of Business Executives  |

#### factfile

| ABE Advanced Diploma in Business Management |   |
|---|---|
| Start Dates                                 | March and September   |
| Entry Requirements                          | <ul style="list-style-type: none"> <li>You must have completed the Business Management Diploma</li> <li>Or possess a first degree</li> <li>Or a BTEC HND</li> <li>Or equivalent NQF level 5 qualification</li> </ul>  |
| Core Modules                                | <ul style="list-style-type: none"> <li>Corporate Strategy and Planning</li> <li>Managing in Organisations</li> <li>International Business Case Study</li> </ul> <p><i>Plus two from</i></p> <ul style="list-style-type: none"> <li>Strategic Marketing Management</li> <li>Corporate Finance</li> <li>Strategic Human Resource Management for Business Organisation</li> <li>Managing the Information Resource</li> </ul> |
| Assessment                                  | <ul style="list-style-type: none"> <li>Examination per module</li> <li>Frequent class tests to check progress</li> </ul>  |
| Accreditation                               | The Association of Business Executives  |

For more information, please contact: [access@concorde-int.com](mailto:access@concorde-int.com)



## WorkSkills Plus Programme

- For students 18+
- Flexible course units which meet expectations of employment providers
- Development of skills for the workplace
- For British, EU students and International students: 6-36 weeks course

### STEP INTO WORK!

#### Introducing the WorkSkillsPlus qualification in partnership with Edexcel™

This course is fully accredited and is on the National Qualifications Framework.

It can be taken either as a BTEC Award (6 credits) or a BTEC Certificate (18 credits) and is highly valued by employers in different industries.

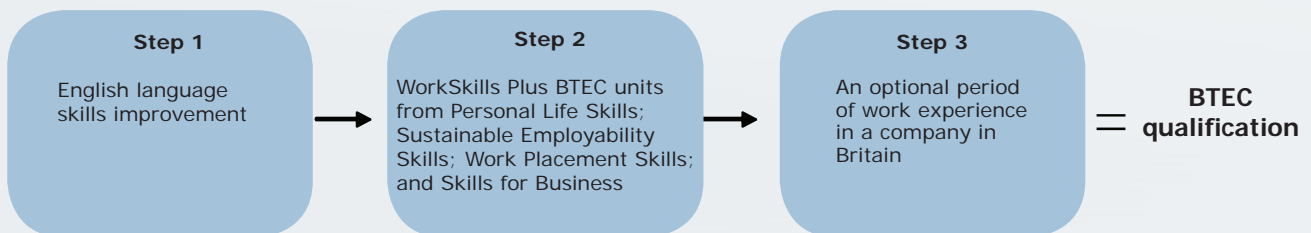
The WorkSkills Plus course is the most challenging and rewarding course on offer, designed to give you practical skills for the world of work and lifelong learning.

#### Course units include modules on:

- CV writing
- job applications in Britain
- critical thinking, self-motivation
- negotiation and persuasion skills
- project management
- entrepreneurship skills

The aim of the WorkSkills Plus course is to develop the 'ABC' of employability requested by companies: **A**ttitude in the workplace, **B**ehaviour in the workplace and **C**ommunication in the workplace

#### 3 easy steps in your studies and personal development plan:



For further details and terms & conditions please email us [workskills@concorde-int.com](mailto:workskills@concorde-int.com)



edexcel, a Pearson company, is the UK's largest awarding body offering academic & vocational qualifications to more than 25,000 study centres here and across the world.  
www.edexcel.com – advancing learning, changing lives

Plan for your future now – its as easy as ABC!



Project: company visit



## Internships & Work Experience

- For students aged 18+
- English for Work Experience
- Intermediate to Advanced Levels



### Before arrival we assess:

- Previous experience and linguistic skills
- Intensive needs analysis
- Client profile
- CV preparation and writing

### Step 1: Getting Started in Class

25 hours per week of General English & IELTS with focus on:

- Speaking: accuracy, fluency, phonemics, pronunciation
- Listening: accuracy of comprehension, varieties of global English on TV/radio/telephone

During the English course there is an introductory meeting with the Work Experience Counsellor to identify work preferences, and to evaluate the student's current work skills.

### Step 2: Personal Development for the workplace

Further one to one meetings with the Work Experience Counsellor who will assist in:

- CV writing/creating a Personal Profile
- Analysis of host company profile
- Strategies for a successful interview: effective communication/presentation skills & body language
- Working practices in the UK: dress code/code of conduct/work management/office integration

Students on this programme can apply to the following sectors:

- Administration
- Advertising
- Architecture
- Banking & Finance
- Culture & Arts
- Environment
- Electrical Engineering
- Health & Social Services
- Human Resources
- Graphic Design

- Publishing, Printing
- Import / Export
- IT Technology
- Computers, Software
- Law & Legal
- Media Communications
- Multimedia
- Sport, Leisure activities
- Telecommunications
- Tourism, Hotel & Catering
- Transport, Logistics
- Public Relations
- Retail

*“ I would recommend work experience here because it's useful not only for gathering experience but also learning English! ”*

Ayumi, from Japan, working in a London art gallery

*“ In my opinion, if you want to achieve a good position in an international company in your country you should do work experience in England. Nowadays, English is the most important language in the world. ”*

Juan, from Spain, working in Accountancy, Kent





Canterbury Christ Church University



## Adult Summer Courses, Canterbury

- For young people aged 18+
- For university students, adults, professionals and teachers
- Flexible enrolments - start every Monday
- Choice of 15 or 25 hours of classes
- Average class size 10-12, with a maximum of 14 for the afternoon options

### University Summer School, Canterbury Christ Church University (July & August)

This modern university campus is a few minutes walk from the centre of Canterbury and provides an ideal atmosphere for study and relaxation during your course.

This is an ideal course and location for those who only have a few weeks to study during the summer holidays.

**The 25 hour programme** is suitable for those who want an exciting and stimulating course. It combines English language learning and practice with the study of a variety of interesting up-to-date topics in the afternoon:

Business English, British Culture, International News and Current Affairs, Literature & Drama.

**The 15 hour programme** in the mornings provides study practice of essential skills - speaking, listening, reading and writing. You are free in the afternoon to visit the city, surrounding countryside and beaches.

The ideal option for family study holidays.

#### Intensive Group 6 Course

The Study Centre

- July & August
- Pre-intermediate to Advanced Levels
- Max 6 participants

This course offers 15 or 25 hours of classes per week for adults aged 21+. The courses take place in the city centre.

The course syllabus is negotiated on the first Monday and is designed to meet the students' specific needs.

Using authentic learning materials such as daily newspapers, TV and radio, you will:

- Develop awareness of structural and functional language
- Expand your vocabulary
- Improve the clarity of your speech and pronunciation
- Develop communication fluency

#### Campus facilities include:

- Seminar rooms and lecture theatres all to the highest technological standard
- Comfortable single or double bedrooms with private or shared facilities
- First class catering in the college dining room. You may reserve a single study bedroom and use the college self service cafeteria
- Comfortable common rooms with televisions and a fully licensed bar

#### Off campus

Next to St. Augustine's Abbey, a World Heritage Site, and the famous Canterbury Cathedral, you are only a step away from numerous restaurants, pubs and cafés.

#### Social Programme

Excursions are arranged at weekends to Oxford, Cambridge, London, Brighton and Leeds Castle. These may be booked a few days in advance. There are optional evening activities throughout the summer.

*“ I had a lot of fun studying at Christ Church. I made friends all over the world and hope that I can come back next year! ”*

Abdulaziz Albayyat, from Saudi Arabia



## Teachers' Courses

- Eligible for Comenius Funding

The summer Teacher Development Courses are held in July and August at Canterbury Christ Church University.

These are intensive courses with 25 hours per week.

The courses are an excellent combination of theory and practical ideas for busy teachers. Seminars focus on methods and approaches to all areas of language teaching and learning.

Our highly experienced trainers consult with course participants to ensure that seminars are useful, relevant and full of tips to improve your teaching skills and effectiveness in the classroom.

### Group programmes

can be arranged year round,  
please email:  
[info@concorde-int.com](mailto:info@concorde-int.com)

The most popular topics from previous years have included:

- Story Telling
- Drama
- Error Correction
- Classroom Management
- Mixed Ability Classes
- The Lexical Approach
- Using Cuisenaire Rods
- Poetry & Literature
- Group & Pair Work
- Pronunciation
- Jigsaw Activities
- Songs & Jazz Chants
- Exploiting Course Books
- Using Grammar Games
- British Culture & The Education System



*“ Classes were very efficient with lots of input and good ideas, certainly kept us on our toes, teachers and staff are incredibly patient and helpful! ”*

Gertrud Lechner, from Austria

### CELTA Course

Concorde International is an accredited Cambridge Teacher Training Centre for CELTA (The Certificate In English Language Teaching to Adults) externally validated by UCLES (University of Cambridge Local Examination Syndicate)

Please find course dates from our website:  
[www.concorde-int.com](http://www.concorde-int.com)

Enquiries to:  
[info@concorde-int.com](mailto:info@concorde-int.com)





Canterbury



## Family Study Holidays

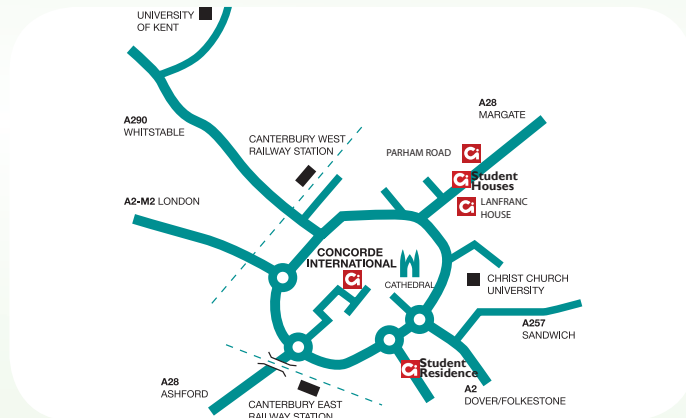
Concorde International warmly welcomes families with children.

We offer a range of modern self-catering apartments for parents who may wish to take a course while their children are following one of the junior summer programmes.

Canterbury provides an ideal environment for children with its pedestrian centre, parks and gardens. The self-catering accommodation is within easy walking distance from the college and city centre.

The school arranges 'English Playtime' for youngsters aged 5 to 9 years and those aged 10 years join the junior English language classes.

For more information please contact: [info@concorde-int.com](mailto:info@concorde-int.com)



*“I think it’s a good idea to have this possibility of parents studying in a centre near their children’s school. We all learnt some English and we are coming back next year!”*

Pablo and Christina, Juan and Maria, from Spain

|                      | Courses   | Hours    | Timetable   |
|----------------------|---|----------|---|
| <b>Adult Course</b>  | <ul style="list-style-type: none"> <li>General English<br/>12 participants maximum</li> <li>Group Six<br/>6 participants maximum</li> </ul> | 15 or 25 | Please see page 3 for the times of the adult course   |
| <b>Junior Course</b> | <ul style="list-style-type: none"> <li>English Playtime<br/>From 5 to 9 years old</li> <li>English Classes<br/>From 10 years old</li> </ul> | 15       | 09.00am—10.30am <b>Classes</b><br>10.30am—11.00am <b>Coffee Break</b><br>11.00am—12.30am <b>Classes</b><br>optional afternoon programme |



Parham Student Village



## Accommodation & Transfers

We understand that our clients have very different requirements when it comes to choosing their accommodation. Therefore we are pleased to offer the following choice of accommodation for our visitors to Canterbury.

### Available All Year

#### Homestay Accommodation

Most clients choose to stay with one of our hosts where a warm welcome is guaranteed. Students have a single room and the host provides breakfast and dinner each day.

This provides the opportunity for students to practice their English outside the classroom and experience life in a British home.

Generally, students of the same nationality are placed in different homes unless friends ask to be placed together.

Our hosts are located in different parts of the city and some students will be able to walk to school each day but others will need to take public transport. We also have hosts located in the nearby seaside towns of Whitstable and Herne Bay.

#### Student Houses

Shared student houses with single study bedrooms in a city centre location, next to Lanfranc House.

#### Student Residence

Single en-suite study bedrooms with shared self catering facilities.

### Available in July and August

#### Canterbury Christ Church University

Canterbury Christ Church University is one of the most modern universities in the country. The single study bedrooms (with shared bathroom facilities) include meal vouchers for the university cafeteria.

The campus is 5 minutes walk from the city centre.

#### Lanfranc House

This residence offers clients modern self-catering facilities close to the town centre and Christ Church University. It offers single and double rooms with private bathrooms and a shared kitchen.

#### Parham Student Village

Modern residential complex built in 2005, with all amenities included in the residences.

A selection of self-catering private houses and flats are available to rent. These are ideal for couples and families.

### Transfer Service

#### Available all year round

Individual transfers to and from Gatwick, Heathrow and Stansted can be arranged. Train and coach information on request.

A transfer service is also available for the seaports of Dover and Folkestone and for Ashford International railway station.

See our Enrolment Form for details.

#### During July and August

Coaches and couriers are available on Sundays between 09.00 and 18.00 for transfers between Gatwick, Heathrow and Stansted airports and our centres. Waiting times can vary between the shuttle buses.

Concorde International couriers are available at each airport to provide assistance.

*“ Host families are so kind and friendly and especially funny. Thanks to them, I could improve my English and I decided to stay in Canterbury for a long time! ”*

Tetsushi Ishimaru, from Japan

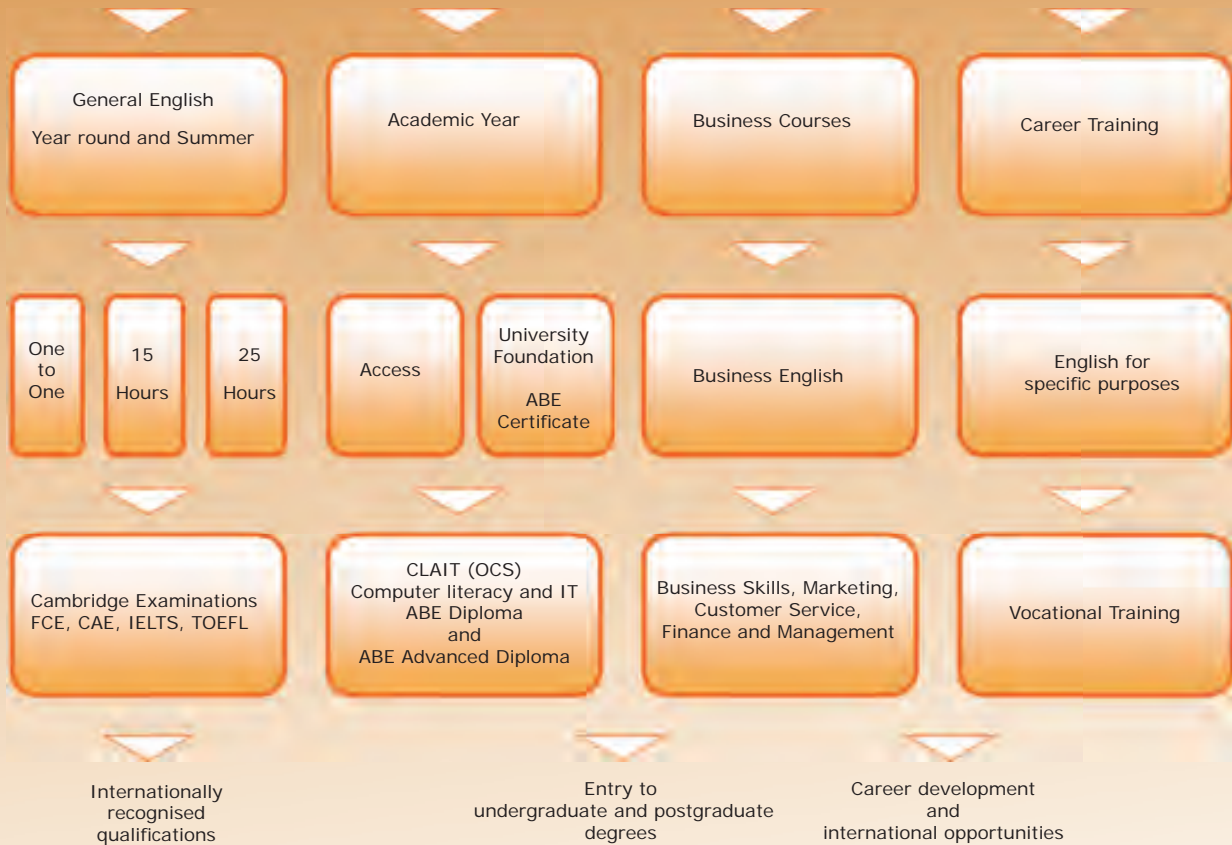


Student Houses



Connecting you with the world of English

## Arrival at Concorde International



Make friends with fellow students from across the world  
Students from 55 different countries attended our courses last year

- Algeria
- Czech Republic
- Japan
- Morocco
- Spain
- Angola
- Estonia
- Jordan
- Norway
- Sweden
- Argentina
- Finland
- Kazakhstan
- Peru
- Switzerland
- Belarus
- France
- Korea
- Poland
- Syria
- Brazil
- Germany
- Kosova
- Qatar
- Taiwan, R.O.C
- Bulgaria
- Greece
- Kuwait
- Romania
- Thailand
- Chile
- Hungary
- Latvia
- Russia
- Turkey
- China
- India
- Libya
- Saudi Arabia
- U.A.E
- Colombia
- Iran
- Lithuania
- Serbia
- Ukraine
- Croatia
- Iraq
- Malaysia
- Slovakia
- Venezuela
- Cyprus
- Italy
- Mexico
- Slovenia
- Vietnam



LanguageCourse.de

Weltweit meistbesuchte  
unabhängige Site für  
Sprachkurs Buchungen

Kurs buchen bei Concorde International, Canterbury für den weltweit niedrigsten Preis  
und lesen Sie Bewertungen zu Concorde International, Canterbury von ehemaligen Teilnehmern auf  
<http://www.languagecourse.net/schule-concorde-international-canterbury.php3>

Unsere Sprachreise-Experten stehen Ihnen gerne zur Verfügung.

0800-999 88 84  
[info@languagecourse.de](mailto:info@languagecourse.de)