

## Smart way to learn Turkish language



**Kursy-Językowe.pl**

Niezależna Najczęściej  
Odwiedzana Strona Interne-  
towa Poświęcona Rezerwacji  
Kursów Językowych

Zarezerwuj kurs w EFINST Turkish Centre, Istanbul za najniższą cenę na Twój wycieczce.  
i przeczytaj opinie o szkole EFINST Turkish Centre, Istanbul przesłane przez byłych uczestników na  
<http://www.languagecourse.net/kursy-jezykowe/szkola-efinst-turkish-centre-pl.php3>

Nasi eksperci od podróży językowych z przyjemnością odpowiadzą na wszelkie pytania.

[info@kursy-jezykowe.com](mailto:info@kursy-jezykowe.com)



## WELCOME TO THE EF TURKISH CENTRE ISTANBUL

The most professional and successful private Turkish language school for foreigners in Turkey teaching students how to speak the language accurately and fluently from the first lesson! The EF Turkish Centre Istanbul has over 12 years experience in meeting the language and training needs of those who wish to study and improve their Turkish. With over 2000 students a year we are dedicated to promoting international understanding through education and raising the standards of language learning. Our lively and informative Turkish lessons are supported by cultural activities which encourage students to learn about the culture and language of Turkey. With our wide range of professional expertise in the field of Turkish language education, we provide students with a unique international learning environment located in the heart of one of the most exciting cities in the world.

We are committed to a General Turkish teaching program that focuses on you, the learner. Our approach is student-centered and communicative, which means that teachers will focus on students aims and interests to help you use Turkish in an effective and practical way.

The emphasis is on building confidence and developing fluency in a lively and authentic language context. We are very careful about the standards of teachers teaching all classes and we follow not only the local standards but also the international ones

because of our connection to the international market. We will gladly take care of arranging your accommodation during your stay. Choose from a wide range of housing home stay, hotels, hostels, self-catering apartments and residences. Our accommodation staff will be happy to help. We know you will want to enjoy the huge range of cultural, sporting and social activities on offer. We run a great entertainment program and our staff will get you involved from day one!

We look forward to seeing you very soon and helping you to achieve your language goals

**Çiğdem Ünlü (Ms.)**  
Sales & Marketing Director



## ABOUT EF

### ABOUT EF LANGUAGE CENTRE

EF Language Centre was first established as a school that taught Turkish as a foreign language to foreign nationals. As of 1997 it became a member of IHWO and took the name IH Istanbul for trading. Both, EF Levent and Suadiye schools, previously known as IH Etiler and Suadiye schools, were founded by Zeynep Gunduzelyi, who is a teacher herself, and Bora Gunduzelyi. The first school, in Levent, was opened in 1997 and proved to be successful. Then it decided to open an English department. The Suadiye School was founded in 2000. Both schools offer English and Turkish classes. On 1 May 2004 a new branch in Bakirkoy was established.

### ABOUT OUR SYSTEM

The system used in teaching both English and Turkish is based on communicative approach. Our Turkish lessons for foreigners aim to teach students starting from Beginner level how to speak the language accurately and fluently from the first lesson and in a short time. This helps students to get by, whether in a taxi, at a restaurant, shopping or answering a phone call. The materials used to teach Turkish are specially designed to help those foreigners who have little time to learn the language and who need to start using it as soon as possible. We guarantee our students immediate progress both in grammar and communication. Customer satisfaction is our main priority.

### CONVERSATION BASED COURSES:

*Key skills: Listening, speaking, self-expression*  
EF trainers tend to do very little lecturing. They insist that students actually engage with the material they are learning. In a one-to-one session with your trainer, the two of you might analyze an article from your industry's trade journal,

or role-play a job interview.

### HOW YOU LEARN:

*Guaranteed results* Our language programs enjoy an astonishing 98% satisfaction rate, thanks to our experience, professionalism and, above all, results. We're so confident in the quality of our course programs that we actually guarantee you will improve an EF Corporate learning level on average every two weeks or you can continue to study with us free of charge until you do. How do we get such astonishing results? We build a Language Competency Profile of your skills in all the key areas, set goals for each, and then customize a dynamic course to meet them. Since you never waste time learning skills you already know, you're able to move up an EF Corporate level on average every 2 weeks.

### THE TEACHERS

Our trainers are recruited very carefully to meet a number of criteria; they are all highly qualified native speakers with a teaching qualification and extensive experience in Turkish language teaching. They are continually improving and developing their skills and knowledge through EFs teacher development courses and seminars. Our teachers are trained in a variety of techniques and approaches and are skilled in selecting the most appropriate method for each particular group or individual student-we feel that this is important as learning styles vary from person to person. All of our teachers have developed a sound understanding of the workings of the business world, and their natural motivation brings extra energy to the classroom environment.





## ACCOMMODATION

### ACCOMMODATION

We hope you will be very happy with the accommodation we have selected for you. The following should answer many questions you may have. If you have got further questions please go to the Accommodation Office, where we will be happy to help.

Accommodation can only be provided for full-time students studying at EF Turkish Centre.

### HOST FAMILIES

The school offers two grades of host family accommodation: standard and superior. Standard host family accommodation provides a single room with a study desk or table. The price includes breakfast Monday to Friday. The room and house cleaning will be done once a week by the family, unless your room is too dirty. In this case you **MUST** provide it yourself. The bathroom facilities are shared with the family. Regarding the usage of the laundry and the kitchen, the host family will instruct you on how to use the appliances. The family will provide the bed linen, but **NOT** the towel. No other students speaking the same mother tongue will stay in the family at the same time unless by special request. The host family will show you the way to the school and may go with you on its first day. If you want to take any means of transportation to the school, you **MUST** pay the ticket for the person who will take you. If you want the host family to take you around the city, all costs (bus ticket, metro



ticket, food and so on) will be paid by you. Superior accommodation includes all the features mentioned above along with dinners Monday to Friday.

Please note, we have got a limited number of families in both categories, so we kindly ask you to contact us in advance and check the availability prior the booking.

Our host families are visited and monitored by our accommodation staff and regularly inspected.

### HOTELS

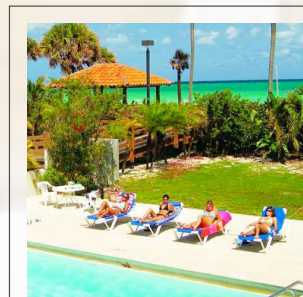
We have got a variety of hotels with a special prices and choice of standards and locations. Please see more details below.

### APART HOTELS

We have selected a special Apart Hotel Suite Home which is very conveniently located and offers an excellent service. You will feel yourselves at home and will definitely enjoy Turkish hospitality.

### HOSTELS

We would like to offer our special choice Bahaus Guesthouse. For more comments please click here.



### TRAVELING BETWEEN THE SCHOOL AND YOUR ACCOMMODATION

With a population in excess of 12 million people living in two continents, it is worth remembering that most Istanbulians spend 1-2 hours travelling to and from work each day.

Most of our accommodation is 30 40 minutes travelling time (door-to-door) from the school. Travel is by bus, minibus, boat, over ground train and underground train. The cheapest way to travel is to buy a travel pass AKBİL. Your host family will be happy to help you with this and also give you directions on how to get to the school. You will also be provided with this information before your arrive to Istanbul. We advice you to buy an A to Z street plan of Istanbul when you arrive. This will make it easier for you to find your way around.

### SMOKING

Please make sure you inform the Accommodation Office if you are a smoker or non-smoker.

### EXTRA NIGHTS

Accommodation can only be arranged for the duration of your course. The first night of your stay will be the Sunday before the course begins and the last night will be the Saturday after the course finishes. Should you require an extra night before or after the course due to flight availability please contact the Accommodation Office in advance.

### TIME OF ARRIVAL

Please contact your host or the Accommodation Office as soon as possible to let us know what time you will arrive. If you do not, your host may not be at home when you arrive.

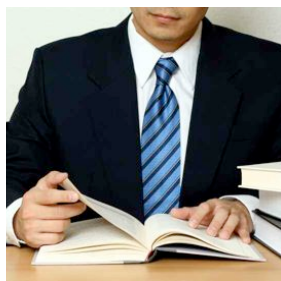
### PAYMENT

In order to guarantee your accommodation payment must be made at least on week in advance by credit card or bank transfer. If you pay by bank transfer, we must receive proof of payment one week in advance. If you have to cancel the accommodation offered to you then please make sure it is done 7 days in advance of the course starting. If you do not cancel in advance, then one weeks cancellation fee will be charged. Refunds are nor offered if you are away for the weekend of for short periods during the course.

### NOTICE

Occasionally students need to change their accomodation. If this is the case we advice you speak to someone in the Accommodation Office before making a final decision and informing your host. If you do decide you want to change or leave the accommodation, you must tell your host and the Accommodation Office **ONE WEEK IN ADVANCE**. For example if you tell your host on Monday you leave =the following Monday. If you leave before the week is finished you still pay the **FULL WEEK**. All money owed to you after the weeks notice will be refunded to you.



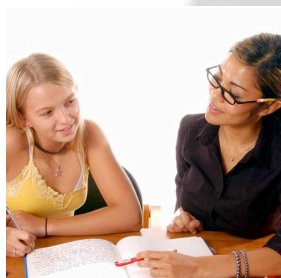


## 1-to-1 TUITION

There is an increasing demand for tailored program for individual clients requiring very flexible, intensive or specialized language courses.

The trainers at EF Language Centre have an unrivalled level of expertise and experience, enabling us to respond to these training needs with one-to-one program which consistently meet and exceed our clients expectations. We have developed a range of one-to-one options to fit in with different training needs. Our intensive one-to-one Turkish courses provide you with your own personal language trainer whose sole mission is to help you reach your learning goals. That means you always progress at your own pace. Your trainer also has the ability to react with total flexibility to your individual learning needs. If you are a beginner, a 1-to-1 course can provide you with all the necessary building blocks to begin communicating immediately. If you have more advanced language skills, you can use the 1-to-1 course to prepare for important sales conferences, scientific presentations, international marketing campaigns or any other professional or social situation requiring the mastery of specialized language skills. Each course can be delivered for an individual or a closed group. Naturally we consult with the client in great depth prior to the course in order to develop a suitable syllabus.

All one-to-one tuition courses are designed to provide maximum exposure to the Turkish language during the clients stay. We accept clients of all levels on to our one-to-one courses



### 1-to-1 COURSES FLEXIBLE 1-to-1 TURKISH TUITION

We are pleased to provide shorter lessons of the one-to-one tuition in our Istanbul branches (Suadiye, Taksim, 1.Levent and Bakirkoy) for people living in Istanbul who need this type of training over an extended period. Courses can be specifically designed around the clients schedule and for any number of participants. Training can take place either at the school or on the clients premises. The minimum number of lesson per week is 4.

### PRIVATE INTENSIVE TURKISH COURSE 15 (PITC 15)

This course provides 3 hours of individual tuition per day for a minimum of one week. Lessons can be in the morning or afternoon. As with all one-to-one courses, the content of the program is determined by careful needs analysis and assessment as well as on-going feedback and discussion to ensure that the agreed training objectives are met.

### PRIVATE INTENSIVE TURKISH COURSE 20 (PITC 20)

This course provides 4 hours of individual tuition per day for a minimum of one week. Lessons can be in the morning or afternoon.

### PRIVATE INTENSIVE TURKISH COURSE 25 (PITC 25)

For clients with limited time available for language training we recommend an intensive program to gain the maximum benefit from their stay in Turkey. The Intensive Course provides 5 hours of one-to-one tuition each day with an hour free each lunch time.



### PRIVATE INTENSIVE PLUS TURKISH COURSE 40 (PIPTC 40)

This course designed to provide maximum exposure to the Turkish language during the clients stay. Eight hours of tailored training with a team of teachers provides a full-immersion course that enables the client to focus entirely on the areas that they need to develop to help them perform more effectively at work. The location of our training centre in 1.Levent means that there is an impressive variety of local restaurants where the client can spend time with the trainer in a more informal setting.

#### AQ

#### Who are the one-to-one courses for?

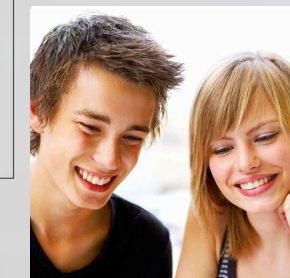
Private tuition is available to any student wishing to follow his or her own language training on a one-to-one basis. Our corporate clients often favor this approach as it enables them to focus on language specific to their role and field of work and allows more flexibility in the scheduling of the course. Tailor-made courses offer Turkish lessons to individuals or groups with specific needs according to their timetable, duration and course program.

#### How is the course set up?

- Firstly a Needs Analysis and Language Assessment are carried out, ideally face to face with one of our senior teachers or, if necessary, by telephone. This provides the school with important background information such as the students previous training experience, starting level, the reasons why they need to develop their language skills and their availability for training.
- A tailored program is then put together to reflect the training requirements and to establish objectives. Progress is monitored carefully throughout the course and regular feedback given by the teacher. If necessary, the content of the program can be adjusted during the course.
- At the end of the course a final report is provided detailing progress made, language areas covered and, if appropriate, recommendations for further study. Our teachers will also advise students on ways to continue training independently, recommending relevant materials and study techniques to help them to progress further.

#### Where is the training delivered?

Lessons take place either in our training centers or, if you prefer, at your companys premises.





### What are the course options?

- The standard price for private lessons is 50 euro + (8%) V.A.T... As we mentioned above, training can be delivered at EF Language Centre or on company premises; an additional charge will be made to cover the teachers travel cost for in-company lessons.
- Our intensive one-to-one courses (15 hours per week) are designed to allow maximum progress within a limited period. This method of training is ideal for people who are preparing to spend time in Turkey and who have a very limited time to learn the language.
- Our fees include the initial Needs Analysis and Language Assessment, course design, tuition, materials designed by EF Language Centre teachers and a final report.
- Please note, that the school must be given a notice about cancellation 24 hours before the lesson. Otherwise, the lesson fee will be charged as though the lesson had taken place.

### HOW TO REGISTER

**Phone:** call 0212 282 9064-65 and ask for the Turkish Department Office; we are usually available Monday-Saturday, 9:00 a.m. to 7:00 p.m. Please be prepared to provide all of the information requested on the registration form.

**Mail:** complete the registration form and send it to the address listed at the bottom of the form.

**Fax:** you may fax your completed registration form to 0212 282 32 18.

**Online:** go to our website at [www.turkishlesson.com](http://www.turkishlesson.com)



## Intensive Turkish Group Courses 2008

### Intensive Turkish Group Courses

Due to the enormous demand for Intensive

courses, EF Language Centre is offering

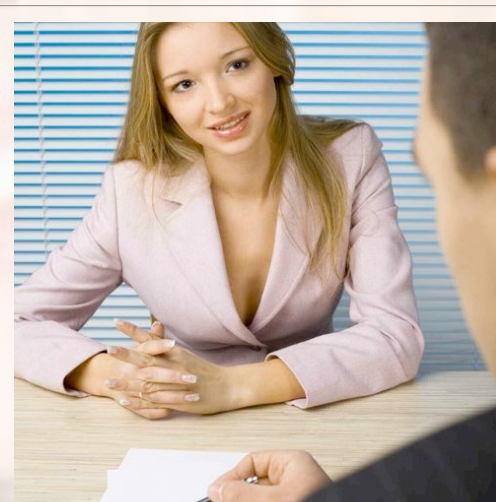
#### Intensive Turkish Group Course ITGC 20

course. For foreigners with limited time for language training we recommend this intensive program to gain the maximum benefit from their stay in Istanbul and maximum exposure to the Turkish language and culture.

Our ITGC 20 provides 4 hours of tuition each day (from Mondays to Fridays) with an hour free for lunch. Many students favor this training as it allows them to complete half a level over 2 weeks and progress effectively and quickly. Students may also enroll for a longer period  
4, 6, 8, 12 weeks.

### ITGC 20 courses include:

- Pre-course information, including town map
- Pre-course placement test
- Tuition as described
- Course materials
- EF student identity card
- Certificate and progress report on completion of course
- Email and internet access
- Access to activities program with at least one optional excursion per week, plus regular international evenings
- Experienced school management well used to working with professional and business people
- small groups (a maximum of 12 students in the intensive classes)
- EF student information handbook
- A truly international mix of students, at least 40 nationalities each year
- Individual tutorial for long stay students (4 weeks plus)
- Services of Russian and Swedish speaking counselors



### Intensive Course

Course length:	2 - 48 weeks
Hours per week:	20
Course schedule:	10:00 - 14:00 or 15:00 - 19:00 Monday to Friday
Group size:	12 maximum
Minimum age:	16 years old



- This course focuses on integrating all the skills of speaking, listening, reading and writing
- The emphasis is on communication skills, improvement in fluency and confidence in speaking Turkish
- Teachers make use of course books, but also supplement lessons with authentic material and out-of-class activities

**IMPORTANT NOTES:**

**Start Dates**

- EF Language Centre Turkish programs have fixed starts dates to ensure you to study with students of a similar level.
- EF Language Centre Istanbul is pleased to offer Turkish Intensive language courses at all levels from Beginners to Advanced throughout the year.
- Students must complete an Online Level test in Turkish before their arrival and check for availability. Accommodation
- EF Language Schools offers students welfare and different accommodation options (Host Family, Residences, Hotels, Hostels and Apartments).

**Minimum group size, Conversion & Course Cancellation**

- The school reserves the right to cancel classes or shorten classes if the number of students is not sufficient. In case of cancellation decided by the school, tuition fees are refunded.



**“Smart Ladies” Morning Standard Turkish Group Courses**

“Smart Ladies” Morning Standard Turkish Group Courses (STMC 10).  
From September till June

EF offers Standard Turkish Group Courses for foreigners living in Turkey. These morning courses are mainly delivered from 10:00 to 14:00 and continue for 10 weeks consisting of 10 academic hours of tuition per week (2 days x 4 hours of class tuition in the morning and 2 hours of free conversation lessons on Fridays mornings).  
From September till June EF offers Standard Turkish Group Courses for foreigners living in Turkey.

**EF System**

EF courses focuses on integrating all the skills of speaking, listening, reading and writing. The emphasis is on communication skills, improvement in fluency and comprehension, and confidence in speaking Turkish. All EF courses are designed to be flexible so that people with similar language levels, needs, experience and background study together in groups, combining individual tuition and lots of communication. Working with key vocabulary, dialogues and grammar through various class activities our students

make progress in a short period of time. Teachers make use of course books, but will also supplement lessons with authentic material and out-of-class activities. The maximum number of students in each class is 10. Each term allows students to complete a full language level.

**Standard Turkish Group Courses include:**

- Pre-course information, including town map
- Pre-course placement test
- Tuition as described
- Course materials
- Certificate and progress report on completion of course
- Email and internet access
- Access to activities' program with at least one optional excursion per week, plus regular international evenings
- Experienced school management well used to working with professional and business people
- Small groups (a maximum of 10 students in the class)
- A truly international mix of students, at least 40 nationalities each year
- Services of Russian, Spanish and French speaking counselors



SMART LADIES				
DATES	HOURS	CONVERSATION LESSONS	# OF WEEKS	TOTAL HOURS
MON / WED or TUE / THU	10:00 -14:00	Fridays 10:00 -12:00	10 weeks	100 hours



**IMPORTANT NOTES:**

**Start Dates**

- EF Language Centre Turkish programs have fixed start dates to ensure you study with students of a similar level
- EF Language Centre Istanbul is pleased to offer Turkish Intensive language courses at all levels from Beginners to Advanced throughout the year.
- Students must complete an Online Level test in Turkish before their arrival and check for availability.

**Accommodation**

- EF Language Schools offers students welfare and different accommodation options (Host Family, Residences, Hotels, Hostels and Apartments).

**Minimum group size, Conversion & Course Cancellation**

- The school reserves the right to cancel classes or shorten classes if the number of students is not sufficient. In case of cancellation decided by the school, tuition fees are refunded.

**Business PROs Evening Standard Turkish Group Courses**

**Business PROs Evening Standard Turkish Group Courses (STEC 5).**

From September till June EF offers Standard Turkish Group Courses for foreigners living in Turkey. These evening courses continue for 12 weeks and consist of 5 academic hours per week (2 days x 2.5 ours of class tuition in the evening). This course is highly demanded amongst foreign business people and is delivered in a closed group, as an executive course. This course is a proper and efficient language course for foreign students with lots of grammar, structure, writing exercises, interactive activities, dialogues and daily language practices. Additionally students will cover cultural awareness sessions, office language, dialogues and terminology.

**EF System**

EF courses focuses on integrating all the skills of speaking, listening, reading and writing. The emphasis is on communication skills,

improvement in fluency and comprehension, and confidence in speaking Turkish. All EF courses are designed to be flexible so that people with similar language levels, needs, experience and background study together in groups, combining individual tuition and lots of communication. Working with key vocabulary, dialogues and grammar through various class activities our students make progress in a short period of time. Teachers make use of course books, but will also supplement lessons with authentic material and out-of-class activities. The maximum number of students in each class is 10. Each term allows students to complete a full language level.

**Standard Turkish Group Courses include:**

- Pre-course information, including town map
- Pre-course placement test
- Tuition as described
- Course materials
- Certificate and progress report on completion of course
- Email and internet access
- Access to activities' program with at least one optional excursion per week, plus regular international evenings

- Experienced school management well used to working with professional and business people
- Small groups (a maximum of 10 students in the class)
- A truly international mix of students, at least 40 nationalities each year
- Services of Russian, Spanish and French speaking counselors

**IMPORTANT NOTES:**

**Start Dates**

- EF Language Centre Turkish programs have fixed start dates to ensure you study with students of a similar level
- EF Language Centre Istanbul is pleased to offer Turkish Intensive language courses at all levels from Beginners to Advanced throughout the year.
- Students must complete an Online Level test in Turkish before their arrival and check for availability.

**Accommodation**

- EF Language Schools offers students welfare and different accommodation options (Host Family, Residences, Hotels, Hostels and Apartments).

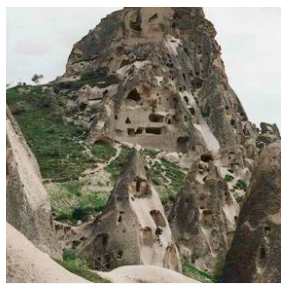
**Minimum group size, Conversion & Course Cancellation**

- The school reserves the right to cancel classes or shorten classes if the number of students is not sufficient. In case of cancellation decided by the school, tuition fees are refunded

**BUSINESS PRO's**

DATES	HOURS	CONVERSATION LESSONS	# OF WEEKS	TOTAL HOURS
MON / WED or TUE /THU	19:00 – 21:30	n/a	12 weeks	60 hours





## Turkish Culture & Cappadocia-Istanbul

### Turkish Culture & Cappadocia Istanbul (TCCI)

"Experience the harmony and diversity from 10,000 years of civilizations"  
Join our specially organized Culture and language studies program starting at our Istanbul Levent Branch school and giving you a chance to visit Cappadocia, with a weekend get away.

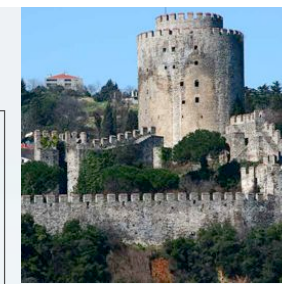
Cappadocia, the homeland of Saint George, fairy chimneys, the underground cities mentioned in Xenophon's Anabasis and the greatest concentration of Byzantine cave churches with remarkable in-situ frescos. Don't miss the Hittite capital Hattusha near the ritual centre Yazilikaya and Alacahoyuk. Other amazing places include Catal Hoyuk where the Neolithic Revolution took place and people worshiped the Mother Goddess, ancient Gordion where King Midas ruled and Alexander the Great later conquered, the richest unexcavated burial mound of the Comagene Kingdom on Mount Nemrut, the towns where Abraham and Saint Paul were born, Mount Ararat where Noah's Ark landed, Seljuk Caravanserais on the Silk

Road, Ottoman mosques, and witness the influence of all these traditions on the customs of people today. From April to December EF



Turkish Centre runs a new program-Turkish Language & Cappadocia Studies in Istanbul with a weekend get away to Cappadocia where religions of many civilizations have interacted-included in the (TLRS).

TLRSP provides 4 hours of Turkish language tuition every day in the mornings (from Mondays to Fridays) and 3 hours of Cultural sight seeing tours in the afternoons in English. This program will be ideal for foreigners, who are interested in a full recognition of local culture and explore a different world for themselves. A weekend tour to Cappadocia will be offered.



This program runs only for two weeks and it includes:

- Pre-course information, including town map
- Pre-course placement test
- 40 hours of group tuition
- 30 hours of Sight seeing tours
- Course materials
- Certificate and progress report on completion of course
- Email and internet access
- Experienced school management accustomed to working with professional and business people
- Small groups (a maximum of 10 students in the class)
- A truly international mix of students, at least 40 nationalities each year
- Services of Russian, Spanish and French speaking counselors
- Host Family accommodation (Single room / all meals included)
- Authentic Turkish lunch at the school?&s cafe with a teacher
- Airport meeting and transfer service
- Special cultural sightseeing tours (4 afternoons + 1 evening per week)
- All entrance fees and transportation

### IMPORTANT NOTES:

#### Start Dates

- EF Language Centre Turkish programs have fixed start dates to ensure you study with students of a similar level
- EF Language Centre Istanbul is pleased to offer Turkish Intensive language courses at all levels from Beginners to Advanced throughout the year.
- Students must complete an Online Level test in Turkish before their arrival and check for availability.

#### Accommodation

- EF Language Schools offers students welfare and different accommodation options (Host Family, Residences, Hotels, Hostels and Apartments).

#### Minimum group size, Conversion & Course Cancellation

- The school reserves the right to cancel classes or shorten classes if the number of students is not sufficient. In case of cancellation decided by the school, tuition fees are refunded.





## Turkish Culture & Language Istanbul

**Turkish Culture & Language Istanbul (TCLI)**  
 Turkish Culture and Language Istanbul Program (TCLIP) is a new program which runs from April to December.

TCLIP provides 4 hours of tuition every day (from Mondays to Fridays). For foreigners with limited time for language training we recommend this new program to gain the maximum benefit from their stay in Istanbul and maximum exposure to the Turkish language and culture.

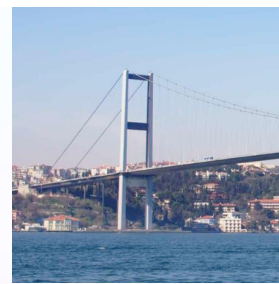
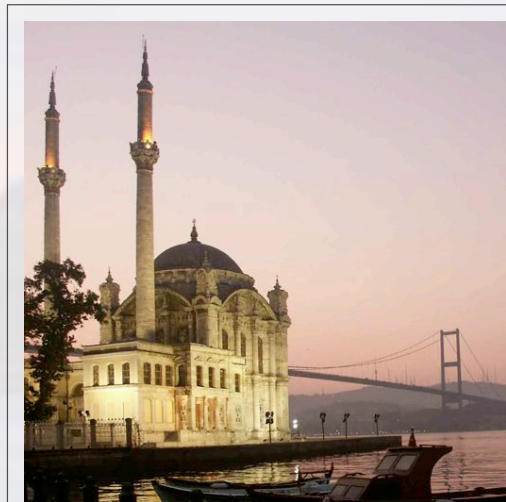
Even those who have been to Istanbul and have seen all the sights will definitely enjoy this program because they will experience real life in Istanbul.

**This program runs only for two weeks and includes:**

- Pre-course information, including town map
- Pre-course placement test
- 40 hours of group tuition
- Course materials
- Certificate and progress report on completion of course
- Email and internet access



- Experienced school management accustomed to working with professional and business people
- Small groups (a maximum of 10 students in the class)
- A truly international mix of students, at least 40 nationalities each year
- Services by Russian, Spanish and French speaking counselors
- Host Family accommodation (Single room / all meals included)
- Authentic Turkish lunch at the schools cafe with a teacher
- Airport meeting and transfer service
- Special cultural sightseeing tours (4 afternoons + 1 evening per week)
- All entrance fees and transportation



### IMPORTANT NOTES:

#### Start Dates

- EF Language Centre Turkish programs have fixed start dates to ensure you study with students of a similar level
- EF Language Centre Istanbul is pleased to offer Turkish Intensive language courses at all levels from Beginners to Advanced throughout the year.
- Students must complete an Online Level test in Turkish before their arrival and check for availability.

#### Accommodation

- EF Language Schools offers students welfare and different accommodation options (Host Family, Residences, Hotels, Hostels and Apartments).

#### Minimum group size, Conversion & Course Cancellation

- The school reserves the right to cancel classes or shorten classes if the number of students is not sufficient. In case of cancellation decided by the school, tuition fees are refunded.
- 31 December 2007





## Turkish Culture & Rumi Istanbul

### Turkish Culture & Rumi Istanbul (TCRI)

In 2007, the world celebrated the 800th anniversary of Rumi's birth and the 733rd anniversary of his death.

Every year in December commemoration ceremonies are held in Konya, Turkey, for Jelaleddin Rumi (Mevlana), the great 13th-century Sufi (Islamic mystic) poet and founder of the Mevlevi (Whirling) Dervish order. From April to December EF Turkish Centre runs a new program-Turkish Language & Rumi Studies in Istanbul with a weekend get away to Konya the heart of Rumi-included in the package (TLRS).

TLRSP provides 4 hours of Turkish language tuition every day in the mornings (from Mondays to Fridays) and 3 hours

of Rumi cultural tours in the afternoons in English.

This package is perfect for foreigners, who are interested in Rumi's life, studies, poetry, philosophy, spirituality and who believe this program will be ideal to experience a new culture and explore a different world to themselves.

A weekend tour to Konya will be offered. Rumi's message of peace, love, tolerance and acceptance is as vital and urgently necessary today as it was in the time of the Seljuk Sultanate of Rum, when Rumi lived

### This program runs only for two weeks and it includes:

- Pre-course information, including town map
- Pre-course placement test
- 40 hours of group tuition
- 30 hours of Sight seeing tours
- Course materials
- Certificate and progress report on completion of course
- Email and internet access
- Experienced school management accustomed to working with professional and business people
- Small groups (a maximum of 10 students in the class)
- A truly international mix of students, at least 40 nationalities each year
- Services by Russian, Spanish and French speaking counselors
- Host Family accommodation (Single room / all meals included)
- Authentic Turkish lunch at the schools cafe with a teacher
- Airport meeting and transfer service
- Special cultural sightseeing tours (4 afternoons + 1 evening per week)
- All entrance fees and transportation

### IMPORTANT NOTES:

#### Start Dates

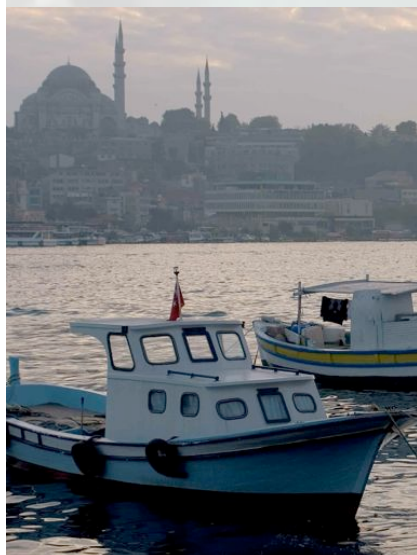
- EF Language Centre Turkish programs have fixed start dates to ensure you study with students of a similar level
- EF Language Centre Istanbul is pleased to offer Turkish Intensive language courses at all levels from Beginners to Advanced throughout the year.
- Students must complete an Online Level test in Turkish before their arrival and check for availability.

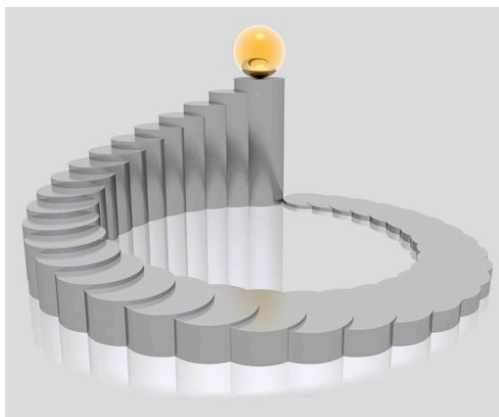
#### Accommodation

- EF Language Schools offers students welfare and different accommodation options (Host Family, Residences, Hotels, Hostels and Apartments).

#### Minimum group size, Conversion & Course Cancellation

- The school reserves the right to cancel classes or shorten classes if the number of students is not sufficient. In case of cancellation decided by the school, tuition fees are refunded.





## EF LEVELS

When studying a language it is important to establish clear, realistic objectives and to monitor the progress made during training. We have developed a system of language levels (see below) which helps our students to describe their starting level and work towards a goal.

Before the start of any course, whether it is for group or one-to-one training, students with existing knowledge of the language will be tested by one of our senior teachers. This is designed to test all four skills (speaking, listening, reading and writing) and to ensure that the resulting program content and level are ideally suited to the individual.

EF Levels and Names		Levels descriptions and abilities.
1. Beginners	T1	Students have no previous knowledge of the language. Students at this level have just begun to study Turkish. Their ability to communicate is limited to the most basic structures and vocabulary in simple situations.
2. Elementary	T2	Students at this level can communicate at basic level and can deal with situations necessary to survive in a Turkish-speaking environment e.g. travel, accommodation, shopping, socializing. Students understand simple sentences spoken slowly and clearly. Their comprehension of Turkish is limited but a foundation has been laid for further learning.
3. Pre-Intermediate	3	Students at this level are still in early stages of learning Turkish, but are able to communicate adequately in simple everyday situations. Their range of vocabulary and ability to manipulate grammatical structure is developing, as is their ability to comprehend oral and written Turkish.
4. Early Intermediate	T4	Although their vocabulary and grammar are limited in range, students at this level are able to communicate their ideas in most basic everyday situations. They are beginning to deal confidentially with authentic listening and reading material. Their ability to express more complex ideas is beginning to develop, although their language is not always accurate.
5. Late Intermediate	T5	Students use of the language and grammar is consistent and usually appropriate but lapses in fluency and accuracy still occur in complex situations.
6. Upper - Intermediate	T6	Students at this level are able to express themselves quite fluently, although not always accurately, with a wide range of vocabulary and a command of all basic grammatical structures. They can use Turkish in a variety of contexts and are beginning to appreciate many of the complexities of the language.
7. Pre-Advanced	T7	Students at this level are able to use a wide range of language and have a good command of the language. It is fluent, effective and well organized with only a few uncertainties in complex and difficult situations. They can easily comprehend natural spoken and written Turkish.
8. Advanced	T8	Students at this level are developing an understanding of and an ability to produce subtleties and complexities of the language, although they may still require some work on accuracy. At the end of this course, students should be close to native speaker competence. They have an excellent command of the language and can tackle the most difficult tasks.

