

# DATES & PRICES

2012



TOP  
24

Spanish Language Schools  
in Spain & Latin America



# Enforex

Spanish in the Spanish World



Discount-Ryugaku.Com

世界規模で最もビジター数の多い独立系語学コース予約サイト

Book course at Enforex, Barcelona for worldwide lowest price  
and Read reviews of Enforex, Barcelona from former participants at  
<http://www.languagecourse.net/discount-ryugaku/gakko-enforex-en.php3>

Our language travel experts will be happy to assist you.

+34-93 268 87 76  
[info@discount-ryugaku.com](mailto:info@discount-ryugaku.com)

# Included in the price

- **Only one application fee:** Students who take more than one course within the same year in any of the 13 Enforex schools will only have to pay one application fee (except Cadiz, Malaga & Pamplona).
- **Possibility of combining different Spanish locations with no extra fees** following the same academic program (except Cadiz, Malaga & Pamplona).
- Spanish course (according to the chosen program) from Monday to Friday (except holidays) during the mornings or afternoons depending on the level of Spanish and the number of students enrolled in the course. Students class times will be confirmed on the first day after the entry test.
- **Written and oral placement test** on the first day of class for all students except beginners.
- **5 hours of Spanish cultural lessons** or cultural workshops (+5 courses).
- **Enforex student manual & school handbook** with useful information about the school, course contents, program of activities and excursions, general informative pamphlets, etc...
- **Accredited certificate and academic report** upon completion of the course, with the Ideal Quality Certificate. Enforex schools are accredited centers of the **Instituto Cervantes**.
- We issue **transcripts for US students** seeking academic credits (request needs to be made upon registration).
- **Cultural activities and excursions** to places of interest, in order to bring students closer to our customs, festivals, food, culture, etc. Some activities are free and some have to be paid.
- Tapas/Reception at all Enforex schools.
- **Student ID card**, free fax reception service, e-mail and post service.
- **Use of the computer & Internet room**, Wi-fi connection, library and video room.
- **Free unlimited e-mail and Internet access** in the school's Internet room, depending on availability.
- **Language "intercambio" classes and cultural exchanges with the Spanish students** who are studying foreign languages at Enforex Barcelona, Madrid & Valencia.
- **24-hour emergency phone line.**

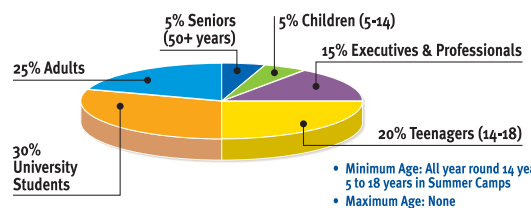


# Enforex guarantees

- Average of **5 students per classroom** (maximum of 10 in Spain and 8 students maximum in Tenerife & Latin America).
- **Enforex schools are open all year round** and courses **start every Monday** of the year, for **beginners too**.
- More than **20 years of experience** in teaching Spanish to foreign students. Our high quality Spanish programs and our experience make us leaders in Spanish language teaching.
- **6 different levels** of Spanish all year round (Europe: A1-C2; US: 101-4004). All levels mentioned, with the exception of superior, are divided into 3 sublevels of lower or higher language knowledge.
- Ages: **minimum age** for Enforex schools is 14 years old; Malaga, Mexico & Pamplona 16 years old; Cadiz & Tenerife 17 years old; Latin America 18 years old.
- **24 Spanish Language schools** in several of the most important and representative cities of Spain (Alicante, Barcelona, Cadiz, Granada, Madrid, Malaga, Marbella, Pamplona, Salamanca, Seville, Tenerife & Valencia), Latin America (Argentina, Bolivia, Chile, Costa Rica, Cuba, Dominican Republic, Ecuador, Guatemala, Mexico & Peru) and 9 international Summer Camps in Spain (Barcelona, Granada, Madrid, Marbella, Salamanca, Seville & Valencia).
- Our schools in Spain use the **same Enforex original teaching method and syllabus** (except Cadiz, Malaga, Pamplona & Tenerife) allowing the students to **combine cities with no extra fee** and to experience the rich variety of Spanish cultures in one stay.
- Enforex schools and accommodation have the **Ideal Quality Certificate** that guarantees the highest standard.
- Enforex schools are accredited centers of the **Instituto Cervantes**.
- Enforex is a member of the following national and international organizations: eduSpain, NAFSA, Ideal Quality Certificate, AATSP, AEEM, AMACFE, FEDELE, AECAE, ACTFL & ELITE.
- Enforex is approved by **CSN** (Sweden) & **Bildungsurlaub** (Germany).
- Enforex programs have been adapted to the American Models and **recognized by many prestigious American universities**. Our system enables the American students to incorporate themselves in our program in order to receive the corresponding **credits of the course**.
- **All the schools are located in the best area of the city centers** with easy access by public transportation. Enforex has the best school locations in each city!
- Guaranteed international atmosphere: Enforex welcomes **more than 20,000 students per year** of more than **72 nationalities** in 24 different centers.
- **Different types of accommodation** (host families, student residences, shared or private apartments & hotels) carefully chosen, all at a maximum distance of 15-30 minutes from the school. All accommodation provided have been visited by Enforex staff and have passed a strict quality control inspection.
- **Customer service:** Our staff speak different languages, and we help and support all our students from the moment they decide to come to Spain until they complete their course and stay.

## All ages - Student profile

Students will be divided by age and level



## + 72 nationalities

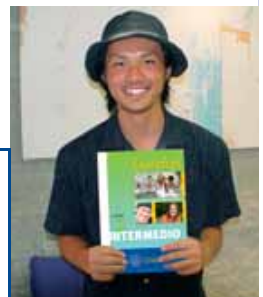


Ask for the general brochure in your own language

Enforex textbook + exercise book 30 € per set (all levels) not included in course and have to be paid with the application

Best Spanish schools!

Medical insurance 60 € per 4 weeks or less



Updated 27/10/2011



<b>One-time application fee</b> 65 € (except partner schools)	<b>Starting dates:</b> Every Monday, all levels (including absolute beginners)	<b>Schools are open all year round</b>	<b>Small classes:</b> Average 5 students per class (maximum 10, Tenerife 8)	<b>1 lesson: 55 minutes</b> (Malaga & Cadiz 45 min., Tenerife 50 min.)	<b>Learn Spanish while traveling:</b> Combination of cities whilst using the same methodology at no extra cost (except partner schools: Cadiz, Malaga, Pamplona & Tenerife)	<b>100% Guaranteed!</b>
---	--	--	---	---	---	-------------------------

## General Intensive & Super Intensive Courses + 5 Cultural Lessons

	SALAMANCA				ALICANTE   BARCELONA   GRANADA MADRID   MALAGA   MARBELLA PAMPLONA   SEVILLE   VALENCIA				CADIZ   TENERIFE		
	Intensive+	Intensive	Super Intensive+	Part Time	Intensive+	Intensive	Super Intensive+	Part Time	Intensive	Super Intensive	Part Time
Lessons/week	20+5	20	25+5	10	20+5	20	25+5	10	20+5	30+5	10+5
1 week	150 €	125 €	265 €	120 €	170 €	150 €	265 €	145 €	190 €	315 €	150 €
2 weeks	300 €	250 €	530 €	240 €	340 €	300 €	530 €	290 €	380 €	630 €	300 €
3 weeks	420 €	360 €	765 €	345 €	495 €	420 €	765 €	405 €	570 €	945 €	450 €
4 weeks	560 €	480 €	1.020 €	460 €	660 €	560 €	1.020 €	540 €	760 €	1.260 €	600 €
5 weeks	700 €	600 €	1.275 €	575 €	825 €	700 €	1.275 €	675 €	925 €	1.525 €	725 €
6 weeks	840 €	720 €	1.530 €	690 €	990 €	840 €	1.530 €	810 €	1.110 €	1.830 €	870 €
7 weeks	980 €	840 €	1.785 €	805 €	1.155 €	980 €	1.785 €	945 €	1.295 €	2.135 €	1.015 €
8 weeks	1.120 €	960 €	2.040 €	920 €	1.320 €	1.120 €	2.040 €	1.080 €	1.400 €	2.320 €	1.120 €
9 weeks	1.260 €	1.080 €	2.295 €	1.035 €	1.485 €	1.260 €	2.295 €	1.215 €	1.575 €	2.610 €	1.260 €
10 weeks	1.300 €	1.200 €	2.400 €	1.150 €	1.550 €	1.350 €	2.400 €	1.300 €	1.750 €	2.900 €	1.400 €
11 weeks	1.430 €	1.320 €	2.640 €	1.265 €	1.705 €	1.485 €	2.640 €	1.430 €	1.925 €	3.080 €	1.485 €
12 weeks	1.560 €	1.440 €	2.880 €	1.380 €	1.860 €	1.620 €	2.880 €	1.560 €	2.040 €	3.240 €	1.620 €
Extra week	130 €	120 €	240 €	115 €	155 €	135 €	240 €	130 €	170 €	270 €	135 €

**Starting dates:** Every Monday, all year round  
**Level:** Non beginner & beginner, all levels

The +5 cultural lessons cover various aspects of the Spanish & Latin American culture and civilization. These classes are available five times per week and are complementary to the regular courses. The maximum number of students in these classes is 16.

## Long Duration Courses +12 weeks

	SALAMANCA			ALICANTE   BARCELONA   GRANADA MADRID   MALAGA   MARBELLA PAMPLONA   SEVILLE   VALENCIA			CADIZ   TENERIFE	
	Intensive+	Intensive	Super Intensive+	Intensive+	Intensive	Super Intensive+	Intensive	Super Intensive
Lessons/week	20+5	20	25+5	20+5	20	25+5	20+5	30+5
+12 weeks	1.560 €	1.440 €	2.880 €	1.860 €	1.620 €	2.880 €	2.040 €	3.240 €
Extra week	130 €	120 €	240 €	155 €	135 €	240 €	170 €	270 €

**Starting dates:** Every Monday, all year round  
**Level:** Non beginner & beginner, all levels

The minimum duration of this course is 12 uninterrupted weeks. If you want to take a break during the course of your program, you must give us at least one week's notice and pay the corresponding change fee. The course price includes a significant discount (as long as the total cost of the program is paid in advance).

## Semester / Academic Year Courses +20 weeks

	SALAMANCA	ALICANTE   BARCELONA GRANADA   MADRID   MARBELLA PAMPLONA   SEVILLE   VALENCIA		CADIZ   TENERIFE	
	Intensive+	Intensive+	Intensive	Super Intensive	Super Intensive
Lessons/week	20+5	20+5	20+5	30+5	30+5
+20 weeks	2.600 €	3.100 €	3.100 €	4.800 €	4.800 €
24 weeks	3.000 €	3.240 €	3.240 €	5.760 €	5.760 €
36 weeks	4.500 €	4.860 €	4.860 €	8.640 €	8.640 €
48 weeks	6.000 €	6.480 €	6.480 €	11.520 €	11.520 €
Extra week	125 €	135 €	135 €	240 €	240 €

**Starting dates:** Every Monday, all year round  
**Level:** Non beginner & beginner, all levels

The minimum duration of this course is 20 uninterrupted weeks. If you want to take a break during the course of your program, you must give us at least one week's notice and pay the corresponding change fee. The course price includes a significant discount (as long as the total cost of the program is paid in advance).

All Intensive+ courses (20+5 lessons per week) will be converted into the Christmas program of 20 lessons per week for this period.

**Cadiz:** Only Intensive course available. Textbook 25 € each level. The school reserves the right to change a group course into One on One tuition (1 or 2 students) in case there is no other student at the same level. If this happens there will be a reduction of class hours of 50%. School is closed from December 24<sup>th</sup> to January 7<sup>th</sup> (2013).

**Malaga:** Intensive not available. Textbook 35 €.

**Pamplona:** Only available Intensive. Intensive supplement: 40 € per week. Beginners can start every 1<sup>st</sup> & 3<sup>rd</sup> Monday of the month. Textbook: Initial level included; Upper level 40 €. School is closed from December 22<sup>nd</sup> to January 1<sup>st</sup> (2013).

**Tenerife:** Textbook included. All Intensive courses (20+5) will be converted into a Christmas course of 20 lessons per week during Christmas time. In the exceptional case that only 1 or 2 students are enrolled in a course in the same level group, the number of classes will be slightly reduced.



## Foundation Year Course + University Placement 6 to 9 months

BARCELONA   MADRID   SALAMANCA   VALENCIA			
Type of course	Lessons/week	26 weeks	36 weeks
Foundation Year + University Placement	20+5	3,760 €	4,990 €
<p><b>Starting dates:</b> January 3<sup>rd</sup>, September 10<sup>th</sup> 2012  <b>Level:</b> Non beginner &amp; beginner, all levels</p> <p>All Intensive+ courses (20+5 lessons per week) will be converted into the Christmas program of 20 lessons per week for this period.  <b>FREE UNIVERSITY PLACEMENT:</b> Enforex will help you to apply for one Public or Private Spanish University for free (tuition fees, administration fees or any other University fees are not included).</p>			

## PAU (Preparation course / exam to enroll in a Spanish University) 5 or 8 months

MADRID   SALAMANCA			
Type of course	Lessons/week	22 weeks	32 weeks
Madrid PAU course + University Placement	9	1,900 €	2,750 €
Salamanca PAU course + University Placement	15	3,100 €	4,300 €
<p><b>Starting dates:</b> January 9<sup>th</sup>, October 1<sup>st</sup> 2012  <b>Level:</b> High intermediate &amp; advanced level</p> <p>Enforex will help you to apply for one Public or Private Spanish University for free (tuition fees, administration fees or any other University fees are not included).  <b>Subjects</b>            1. Lengua Española, Comentario de texto y Literatura            2. Historia de España            3. Lengua Extranjera - Inglés            4. Geografía</p>			

## Group Programs

ALICANTE   BARCELONA   CADIZ   GRANADA   MADRID   MALAGA   MARBELLA   PAMPLONA   SALAMANCA   SEVILLE   TENERIFE   VALENCIA	
Type of course	Prices
Prices, dates, timetable, duration & course content according to the needs of the group	Excellent group prices!!!
Please contact: <a href="mailto:groups@enforex.es">groups@enforex.es</a>	



## One on One - Small Mini Groups

### Private tuition & Spanish for Professionals

ALICANTE   BARCELONA   GRANADA   MADRID   MALAGA MARBELLA   PAMPLONA   SALAMANCA   SEVILLE   VALENCIA				
Type of course	Lessons/week	1 student in class	2 students in class	3 students in class
One on One	1	40 €	25 €/student	18 €/student
	5	190 €	120 €/student	85 €/student
	10	380 €	230 €/student	165 €/student
	20	690 €	450 €/student	320 €/student
	30	995 €	640 €/student	465 €/student
	extra lesson (+30)	33 €	22 €/lesson	15 €/lesson
<p><b>Starting dates:</b> Any day. All lessons must be taken within the same week  <b>Level:</b> All levels</p> <p><b>Please note</b> that to enroll on private tuition classes for more than 1 person participating students must arrive together and be of the same Spanish level (except in Malaga).            15% additional fee for specific Spanish lessons (example: Medical Spanish, Legal Spanish, etc.).            Specific Spanish lessons not available in Malaga.            From 15% additional fee for classes outside the school (Minimum: 15 €).  <b>Malaga:</b> Textbook 35 €.  <b>Pamplona:</b> Textbook: Initial level included; Upper level 40 €. School is closed from December 22<sup>nd</sup> to January 1<sup>st</sup> (2013).</p>				

CADIZ   TENERIFE			
Type of course	Lessons/week	1 student in class	2 students in class
One on One	1	40 €	30 €/student
	5	195 €	145 €/student
	10	380 €	285 €/student
	20	740 €	540 €/student
	30	1,050 €	750 €/student
	extra lesson (+30)	35 €	25 €/lesson
<p><b>Starting dates:</b> Any day  <b>Level:</b> All levels</p> <p>Supplement per class outside normal hours (ask for availability): 18 €.            For specialized subjects, please ask our Head Office for availability and quotes.  <b>Please note</b> that to enroll on private tuition classes for more than 1 person participating students must arrive together and be of the same Spanish level.  <b>Cadiz:</b> only 1 student in class available.            Textbook 25 € each level.            Minimum of 10 lessons per week.</p>			

# Spanish for Specific Purposes

## DELE Official Exam Preparation Course

BARCELONA   GRANADA   MADRID SALAMANCA   SEVILLE   VALENCIA		
Type of course	Lessons/week	4 weeks
A1 / A2	20	660 €
B1 / B2	20	710 €
C1 / C2	20	780 €

**Starting dates:** April 30<sup>th</sup> (exam date: May 25<sup>th</sup>); July 30<sup>th</sup> (exam date: August 24<sup>th</sup>); October 15<sup>th</sup> (exam date: November 9<sup>th</sup>)

**Level:** All levels. To enroll in a DELE course, students must have at least the same level of Spanish taught in the course

Preparation course for DELE levels. The price does not include the exam fee (approx. 105 € for A1, 120 € for A2, 150 € for B1, 172 € for B2, 180 € for C1 and 187 € for C2). To formally register for the exam, please send us a copy of your passport together with your personal details, permanent address and full payment at least 10 weeks before the exam date. The student's exam is not guaranteed unless the payment is done.  
Inscription fee: 5 €.  
Minimum age required for the examination: 16 years old.  
Maximum 14 students per class.  
**Passing DELE exam:** Enforex guarantees that those students who complete a course of 3 or more months and who have had at least a 90% attendance rate will pass the DELE exam at the level of Spanish that they have acquired through the course. If the student does not pass the said exam, Enforex will offer the student a free 4-week intensive+ course (20+5 lessons per week).

## Spanish Teacher Training Course & Pedagogical Seminars

BARCELONA   MADRID   SEVILLE   VALENCIA		
Type of course	Lessons/duration	Prices
Madrid Course	30/2 weeks	390 € / 2 weeks
Seville Easter Seminar	20/3 days	145 € / 3 days
Valencia Spring Seminar	20/3 days	145 € / 3 days
Barcelona Summer Seminar	10/2 days	90 € / 2 days

**Starting dates:**  
Barcelona: June 8<sup>th</sup>;  
Madrid: January 2<sup>nd</sup> & July 2<sup>nd</sup>;  
Seville: April 2<sup>nd</sup>;  
Valencia: May 4<sup>th</sup>

**Level:** Native Spanish or High intermediate & advanced level

Seminars open to everyone; not limited to Spanish teachers.  
Minimum 5 students per class.  
Maximum 20 students per class.

## Spanish + History / Spanish + Art / Spanish + Literature Courses

BARCELONA   GRANADA   MADRID   SALAMANCA			
Type of course	Lessons/week	2 weeks	4 weeks
Spanish + History / + Art / + Literature	20	610 €	1.050 €

**Starting dates:**  
Barcelona & Granada: January 2<sup>nd</sup>, March 5<sup>th</sup>, June 18<sup>th</sup>, July 9<sup>th</sup>, September 3<sup>rd</sup> & October 1<sup>st</sup>;  
Madrid & Salamanca: January 16<sup>th</sup>, April 2<sup>nd</sup>, July 2<sup>nd</sup> & October 29<sup>th</sup>

**Level:** High intermediate or advanced level

20 lessons per week: 10 Spanish language + 10 History / Art / Literature lessons.  
Minimum 3 students per class.  
Maximum 14 students per class.

## Business Spanish Course & Chamber of Commerce Exam

BARCELONA   MADRID   SALAMANCA   VALENCIA			
Type of course	Lessons/week	2 weeks	4 weeks
Business Spanish Course	20	610 €	1.050 €

**Starting dates:**  
Barcelona & Salamanca: January 23<sup>rd</sup>, May 14<sup>th</sup>, June 25<sup>th</sup>, July 9<sup>th</sup>, August 6<sup>th</sup>, October 1<sup>st</sup> & November 26<sup>th</sup>;  
Madrid & Valencia: January 2<sup>nd</sup>, February 20<sup>th</sup>, April 16<sup>th</sup>, June 11<sup>th</sup>, July 9<sup>th</sup>, September 3<sup>rd</sup> & October 29<sup>th</sup>

**Level:** High intermediate or advanced level

20 Business lessons per week.  
Enforex is accredited by the Spanish Chamber of Commerce of Madrid and students can optionally take the official exams at the end of the course. Exam fees are not included (approx. 120 €).  
Inscription fee: 5 € + exam fee.  
Maximum 10 students per class.

## Spanish + Internship

BARCELONA   GRANADA   MADRID SALAMANCA   SEVILLE   VALENCIA	
Type of course	Prices
4 weeks of Intensive course + 8 weeks of Work Experience	1.500 € / 12 weeks
4 weeks of Business course + 8 weeks of Work Experience	1.940 € / 12 weeks
8 weeks of Work Experience	890 € / 8 weeks
+ extra week Work Experience	150 € / week

**Starting dates:**  
Intensive course / Work Experience: Every 1<sup>st</sup> Monday of each month, all year round  
Business course / Work Experience: Please refer to Business Spanish course starting dates  
**Level:** High intermediate or advanced level

**Included:** Language course if selected, training + information, evaluation, assessment and orientation; a full or part time internship working with professionals in the field selected; support and contact with Enforex.  
**Extra week** Work Experience not always available.

## Spanish + Paid Job

ALICANTE   BARCELONA   GRANADA   MADRID MARBELLA   SALAMANCA   SEVILLE   VALENCIA	
Type of course	Price
4 weeks of Intensive course + Paid Job (Hotel Internship)	1.450 € / 4 weeks

**Starting dates:** Every Monday, all year round  
**Level:** High intermediate & advanced level

**Included:** 4 weeks of Intensive Spanish course, CV coaching, interview, placement and references.  
Only available for students of Tourism.  
Not available for non EU citizens.  
**Internship:** All over Spain.



# Spanish & Leisure Activities

## Christmas Program

BARCELONA   GRANADA   MADRID SALAMANCA   SEVILLE   VALENCIA			
Type of course	Lessons/week	1 week	2 weeks
Christmas Program	20	170 €	340 €
<p><b>Starting dates:</b> December 19<sup>th</sup> 2011, December 24<sup>th</sup> &amp; 31<sup>st</sup> 2012  <b>Level:</b> Non beginner &amp; beginner, all levels</p> <p>All Intensive+ courses (20+5 lessons per week) will be converted into the Christmas program of 20 lessons per week for this period.            Most activities offered during the Christmas week are included in the price (except the transport costs and entrance fees).</p>			

## Christmas Program

TENERIFE			
Type of course	Lessons/week	1 week	2 weeks
Christmas Program	20	190 €	380 €
<p><b>Starting dates:</b> December 19<sup>th</sup> &amp; 26<sup>th</sup> 2011, December 24<sup>th</sup> &amp; 31<sup>st</sup> 2012  <b>Level:</b> Non beginner &amp; beginner, all levels</p> <p>All Intensive+ courses (20+5 lessons per week) will be converted into the Christmas program of 20 lessons per week for this period.            Textbook included.</p>			

## 50+ Spanish Program

ALICANTE   MARBELLA   TENERIFE		
Type of course	Lessons/week	2 weeks
50+ Spanish Program	20+5	560 €
<p><b>Starting dates:</b>  <b>Alicante:</b> March 5<sup>th</sup> &amp; October 22<sup>nd</sup>;  <b>Marbella:</b> February 13<sup>th</sup> &amp; November 12<sup>th</sup>;  <b>Tenerife:</b> January 2<sup>nd</sup>, 16<sup>th</sup> &amp; 30<sup>th</sup>, February 13<sup>th</sup> &amp; 27<sup>th</sup>, March 12<sup>th</sup> &amp; 26<sup>th</sup>, April 9<sup>th</sup> &amp; 23<sup>rd</sup>, May 7<sup>th</sup> &amp; 21<sup>st</sup>, June 4<sup>th</sup> &amp; 18<sup>th</sup>, September 3<sup>rd</sup> &amp; 17<sup>th</sup>, October 1<sup>st</sup>, 15<sup>th</sup> &amp; 29<sup>th</sup>, November 12<sup>th</sup> &amp; 26<sup>th</sup> and during July &amp; August any Monday  <b>Level:</b> Alicante &amp; Marbella: Beginner &amp; intermediate level; Tenerife: All levels</p> <p>Minimum 3 students per class.  <b>Included in Alicante &amp; Marbella:</b> 2 afternoon activities and 2 full day excursions per week.  <b>Included in Tenerife:</b> Visits, cultural and dance lessons.  <b>Tenerife:</b> Textbook included.            During the rest of the year and in all other cities, students can still sign up for the Intensive program, starting any Monday, but we cannot guarantee placement with exclusively 50+ students.</p>		

## Spanish + Flamenco Course

GRANADA   MADRID   MARBELLA   SEVILLE			
Type of course	Lessons/week	1 week	Extra week
Spanish + Flamenco Course	20+8	430 €	430 €
<p><b>Starting dates:</b> Every Monday, all year round  <b>Level:</b> Non beginner &amp; beginner, all levels</p> <p>20 + 8 lessons per week: 20 Spanish language + 8 Flamenco lessons.            Age: from 16 years old (we can make exceptions in the summer season).  <b>Please note</b> that students may need to purchase: Flamenco shoes, flamenco skirt and leotard (approx. 90€).</p>			

## Spanish + Cooking

BARCELONA		
Type of course	Lessons/week	4 weeks
Spanish + Cooking	20+10	1.890 €
<p><b>Starting dates:</b> January 9<sup>th</sup>, June 4<sup>th</sup> &amp; July 2<sup>nd</sup>  <b>Level:</b> Non beginner &amp; beginner, all levels</p> <p>20 + 10 lessons per week: 20 Spanish language + 10 Cooking lessons.</p>		

## Spanish + Hiking

TENERIFE		
Type of course	Lessons/week	2 weeks
Spanish + Hiking	20+5	705 €
<p><b>Starting dates:</b> June 4<sup>th</sup> &amp; September 24<sup>th</sup>  <b>Level:</b> Non beginner &amp; beginner, all levels</p> <p>Minimum 5 students per class.  <b>Included:</b> 2 weeks Intensive Spanish course (20 + 5 Spanish lessons per week) + 6 three-hour hiking visits, 2 full day excursions, 2 half day excursions.</p>		

## Spanish + Golf Course / Tennis Course

MARBELLA			
Type of course	Lessons/week	1 week	Extra week
Spanish + Golf Course / Tennis Course	20+10	430 €	430 €
<p><b>Starting dates:</b> Every Monday, all year round  <b>Level:</b> Non beginner &amp; beginner, all levels</p> <p>20 + 10 lessons per week: 20 Spanish lessons + 5 hours of tennis or golf lessons + 5 hours of practice.  <b>Golf &amp; Tennis level:</b>            From beginner to advanced.            Clubs are included. Balls must be acquired.</p>			

## Spanish + Scuba Diving

TENERIFE		
Type of course	2 weeks	
Spanish + Scuba Diving - Padi beginner / advanced	775 €	
Spanish + Scuba Diving - Padi dive master	1.195 €	
<p><b>Starting dates:</b> Every Monday, all year round  <b>Level:</b> Non beginner &amp; beginner, all levels</p> <p>Textbook included.  <b>Included:</b> 2 weeks Intensive Spanish course (20 Spanish lessons per week) + Scuba diving course (5 dive lessons per week).</p>		



# Other fees & Services in Spain

## Other fees

Fee	Prices	
Application fee for any enrollment type	65 €	
Courier / Express mail	110 €	
Medical Insurance (4 weeks or less)	60 €	
Changes after arrival	On accommodation	125 €
	Change of school or program	125 €

Fee	Prices	
Changes after arrival	Break in the course for max. period of 3 weeks	100 €
Libro de texto - Student book		17 €
Libro de ejercicios - Exercise book		13 €
Accommodation & Placement fee	Accommodation without taking a course	75 €/week
DELE, Chamber of Commerce or other exam inscription fees		5 €

## Pick-Up - Spain Language Schools

School	Transfer from/to	Prices per trip, per person	
		1 person	2 or more people
Alicante	Alicante airport, train or bus station	85 €	55 €/student
	Valencia airport, train or bus station	250 €	210 €/student
Barcelona	Barcelona airport, train or bus station	85 €	55 €/student
	Gerona airport, train or bus station	225 €	125 €/student
	Reus airport, train or bus station	225 €	125 €/student
	Tarragona airport, train or bus station	225 €	125 €/student
Cadiz	Jerez airport, train or bus station	85 €	75 €/student
	Seville airport, train or bus station	185 €	170 €/student
Granada	Granada airport, train or bus station	85 €	55 €/student
	Malaga airport, train or bus station	165 €	105 €/student
Madrid	Madrid airport, train or bus station	85 €	55 €/student
Malaga	Malaga airport, train or bus station	85 €	85 €/student

School	Transfer from/to	Prices per trip, per person	
		1 person	2 or more people
Marbella	Malaga airport, train or bus station	95 €	70 €/student
	Gibraltar airport, train or bus station	120 €	90 €/student
Pamplona	Pamplona airport, train or bus station	85 €	55 €/student
	Madrid airport, train or bus station	199 €	115 €/student
Salamanca	Madrid airport + Salamanca bus station*	115 €	90 €/student
	Valladolid airport, train or bus station	199 €	115 €/student
	Salamanca airport, train or bus station	85 €	55 €/student
Seville	Seville airport, train or bus station	85 €	55 €/student
	Tenerife		
Tenerife	Tenerife Norte airport or bus station	85 €	55 €/student
	Tenerife Sur airport or bus station	155 €	99 €/student
Valencia	Valencia airport, train or bus station	85 €	55 €/student
	Alicante airport, train or bus station	250 €	210 €/student

\* Salamanca bus: Transfer from Madrid airport to bus station, bus to Salamanca & transfer from Salamanca station to accommodation.

## Holidays - National & local

These dates are provisional and we cannot be responsible for changes made by central or local authorities.

### 2012 NATIONAL HOLIDAYS

- January 1<sup>st</sup> — New Year's day
- January 6<sup>th</sup> — Epiphany
- April 6<sup>th</sup> — Easter
- May 1<sup>st</sup> — Labour Day
- August 15<sup>th</sup> — Asunción de la Virgen
- October 12<sup>th</sup> — Spanish National Holiday
- November 1<sup>st</sup> — All Saints day
- December 6<sup>th</sup> — Constitution Day
- December 8<sup>th</sup> — Inmaculada Concepción
- December 25<sup>th</sup> — Christmas

- Aside from these 10 national holidays, there are 4 regional holidays decided by each community and city.
- Please note that when a public holiday falls on a Sunday, it may be celebrated on a weekday in some communities.
- In case of two holidays within one week (Monday to Friday), one day of the missed lessons will be recuperated (except Cadiz, Malaga & Pamplona).
- There will be no refund of classes missed due to national or local holidays except for One on One classes which will be recuperated in any case.
- Partner schools have different policies regarding holidays, so please contact our Head Office for more information.



2012 LOCAL HOLIDAYS are not yet confirmed, please find below a provisional list based on 2011:

- Alicante: March 19<sup>th</sup>, April 21<sup>st</sup> & 25<sup>th</sup>, May 2<sup>nd</sup> & 5<sup>th</sup>, June 24<sup>th</sup>
- Barcelona: March 7<sup>th</sup>, April 25<sup>th</sup>, June 13<sup>th</sup> & 24<sup>th</sup>, September 24<sup>th</sup>, December 26<sup>th</sup>
- Cadiz: February 28<sup>th</sup>, March 7<sup>th</sup>, April 21<sup>st</sup>, May 2<sup>nd</sup>, October 7<sup>th</sup>, December 26<sup>th</sup>
- Granada: February 28<sup>th</sup>, April 21<sup>st</sup>, May 2<sup>nd</sup>, June 23<sup>rd</sup>, September 15<sup>th</sup>, December 26<sup>th</sup>
- Madrid: April 21<sup>st</sup>, May 2<sup>nd</sup>, June 23<sup>rd</sup>, July 25<sup>th</sup>, September 9<sup>th</sup>, November 9<sup>th</sup>
- Malaga: February 28<sup>th</sup>, April 21<sup>st</sup>, May 2<sup>nd</sup>, August 19<sup>th</sup>, September 8<sup>th</sup>, December 26<sup>th</sup>
- Marbella: February 28<sup>th</sup>, April 21<sup>st</sup>, May 2<sup>nd</sup>, June 11<sup>th</sup>, October 19<sup>th</sup>, December 26<sup>th</sup>
- Pamplona: April 21<sup>st</sup> & 25<sup>th</sup>, July 7<sup>th</sup> & 25<sup>th</sup>, November 29<sup>th</sup>, December 3<sup>rd</sup> & 26<sup>th</sup>
- Salamanca: April 21<sup>st</sup> & 23<sup>rd</sup>, June 13<sup>th</sup>, July 25<sup>th</sup>, September 8<sup>th</sup>
- Seville: February 28<sup>th</sup>, April 21<sup>st</sup>, May 2<sup>nd</sup> & 30<sup>th</sup>, June 23<sup>rd</sup>, December 26<sup>th</sup>
- Tenerife: February 2<sup>nd</sup>, April 21<sup>st</sup>, May 3<sup>rd</sup> & 30<sup>th</sup>, July 12<sup>th</sup>, December 26<sup>th</sup>
- Valencia: January 7<sup>th</sup> & 22<sup>nd</sup>, March 19<sup>th</sup>, April 21<sup>st</sup> & 25<sup>th</sup>, May 2<sup>nd</sup>

**IMPORTANT:** Please check with our Head Office in order to confirm exact dates before planning your program because schools will be closed during official holidays (national and local). Also, please be aware that whenever one of these holidays is on Sunday, generally the day off will be the Monday after.

- Please check <http://www.enforex.com/holidays-spain.html> for updated holidays before planning your trip to Spain.





The accommodation is available from 12:00 noon (18:00 for Cadiz) on the Sunday prior to the first day of the course (Monday), until 12:00 noon on the Saturday following the last day of class (Friday). Those students who, for any reason (i.e. flight arrival) need their accommodation to be available before or after the above mentioned dates will be charged for any extra days needed (max. 3 days). The cost of an entire week will be charged to those students requiring 4 or more additional days of accommodation. Enforex does not guarantee the availability of extra days of accommodation. An additional placement fee of 75 € per week and per person will be charged for those staying in accommodation but not taking a course.

## Accommodation in Spain

### Shared Flat - Student Apartment (without meals)



ALICANTE | BARCELONA | CADIZ | GRANADA | MADRID | MALAGA | MARBELLA | PAMPLONA | SALAMANCA | SEVILLE | TENERIFE | VALENCIA

Location	Type of room	1 - 2 weeks	3 - 11 weeks	12 weeks or more	Private bathroom	Extra day (max. 3 days)	High season supplement
ALICANTE, SEVILLE & VALENCIA	Double room	145 €/week	90 €/week	80 €/week	65 €/week	35 €/night	-
	Single room	175 €/week	120 €/week	110 €/week	110 €/week	45 €/night	-
BARCELONA, CADIZ, MADRID & MALAGA	Double room	165 €/week	110 €/week	100 €/week	65 €/week	35 €/night	-
	Single room	235 €/week	190 €/week	170 €/week	110 €/week	45 €/night	-
GRANADA & SALAMANCA	Double room	125 €/week	75 €/week	70 €/week	65 €/week	35 €/night	-
	Single room	155 €/week	100 €/week	95 €/week	110 €/week	45 €/night	-
MARBELLA	Double room	145 €/week	90 €/week	80 €/week	65 €/week	35 €/night	(10/06 to 25/08) 40 €/week
	Single room	175 €/week	120 €/week	110 €/week	110 €/week	45 €/night	(10/06 to 25/08) 70 €/week
PAMPLONA	Double room	145 €/week	90 €/week	80 €/week	65 €/week	35 €/night	(01/07 to 14/07) 135 €/week
	Single room	175 €/week	120 €/week	110 €/week	110 €/week	45 €/night	(01/07 to 14/07) 135 €/week
TENERIFE	Double room standard	90 €/week	90 €/week	90 €/week	65 €/week	35 €/night	(12/02 to 26/02) 55 €/week
	Double room premium	455 €/week	455 €/week	455 €/week	65 €/week	65 €/night	(12/02 to 26/02) 55 €/week
	Single room standard	120 €/week	120 €/week	120 €/week	110 €/week	45 €/night	(12/02 to 26/02) 95 €/week
	Single room premium	580 €/week	580 €/week	580 €/week	110 €/week	85 €/night	(12/02 to 26/02) 95 €/week

**Price includes:** Bed linen (in Cadiz can be hired & in Malaga can be bought, approx. 25 €), blankets (except Tenerife), access to fully equipped kitchen and laundry room (once a week in Pamplona), shared bathroom, shared TV, central heating (except Malaga) and gas costs. Cleaning service is not included (only common areas once a week). No cleaning in Cadiz. Maintenance and repairs, electricity and water costs included.

**Extra bed** available. **Triple rooms** available when 3 students are traveling together at a discount of 20% from double room price per student. Discount does not apply on high season supplement. **Double room for single use** available on request and with a supplement of 35% over single room price.

**Cadiz:** No private bathrooms available.

**Cadiz & Pamplona:** Double room only available for 2 students traveling together.

**Tenerife shared double room** (with another student in the same room): If you reserve a double room and there is no other student with whom you can share, we reserve the right to change your room at any time.

### Home Stay - Host Family

ALICANTE | BARCELONA | CADIZ | GRANADA | MADRID | MALAGA | MARBELLA | PAMPLONA | SALAMANCA | SEVILLE | TENERIFE | VALENCIA

Location	Type of room	Half board	Full board	Private bathroom	Extra day (max. 3 days)	High season supplement
ALICANTE, GRANADA, MARBELLA, SEVILLE & VALENCIA	Double room	159 €/week	169 €/week	65 €/week	35 €/night	-
	Single room	169 €/week	189 €/week	110 €/week	45 €/night	-
BARCELONA & MADRID	Double room	189 €/week	229 €/week	65 €/week	35 €/night	-
	Single room	229 €/week	259 €/week	110 €/week	45 €/night	-
CADIZ	Double room	189 €/week	229 €/week	-	55 €/night	-
	Single room	229 €/week	259 €/week	-	55 €/night	-
MALAGA	Double room	189 €/week	229 €/week	-	40 €/night	(03/06 to 30/09) 40 €/week
	Single room	229 €/week	259 €/week	-	45 €/night	(03/06 to 30/09) 70 €/week
PAMPLONA	Double room	189 €/week	229 €/week	-	35 €/night	(01/07 to 14/07) 135 €/week
	Single room	229 €/week	259 €/week	-	45 €/night	(01/07 to 14/07) 135 €/week
SALAMANCA	Double room	149 €/week	159 €/week	65 €/week	35 €/night	-
	Single room	159 €/week	169 €/week	110 €/week	45 €/night	-
TENERIFE	Double room standard	189 €/week	229 €/week	65 €/week	35 €/night	(12/02 to 26/02) 55 €/week
	Double room premium	355 €/week	435 €/week	110 €/week	55 €/night	(12/02 to 26/02) 55 €/week
	Single room standard	229 €/week	259 €/week	65 €/week	45 €/night	(12/02 to 26/02) 95 €/week
	Single room premium	400 €/week	475 €/week	110 €/week	75 €/night	(12/02 to 26/02) 95 €/week

**Price includes:** Bed linen, blankets, laundry once per week & meals (90% of host families in Barcelona do not offer lunch in the house, but a packed lunch).

**Cadiz, Pamplona & Tenerife premium:** Double room only available for 2 students traveling together.

**Tenerife premium host family price also includes:** Internet access, private bathroom, towels and daily cleaning.

**Tenerife shared double room** (with another student in the same room): If you reserve a double room and there is no other student with whom you can share, we reserve the right to change your room at any time.



NOTE: It is necessary to leave a deposit upon arrival (150 € payable in cash or with credit card authorization) when staying in Student residence or Shared flat-student apartment. The deposit shall be returned to the student at the end of the stay providing there are no damages. The students should contact our central office in order to be informed about the place and the time to pick up the keys of their rooms. The students must respect all rules and regulations set by families, residences and shared flat administrations. If there is damage to the premises the student must pay for the corresponding amount.

## Premium Private Apartment - Studio



ALICANTE | BARCELONA | GRANADA | MADRID | MARBELLA | SALAMANCA | SEVILLE | TENERIFE | VALENCIA

Location	Type of apartment	Low season	High season	Location	Type of apartment	Low season	High season
ALICANTE & MARBELLA	1 or 2 people	695 €/week	1.295 €/week	MADRID	1 or 2 people	995 €/week	1.500 €/week
	3 or 4 people	895 €/week	1.495 €/week		3 or 4 people	1.195 €/week	1.700 €/week
BARCELONA	1 or 2 people	995 €/week	1.600 €/week	SEVILLE	1 or 2 people	695 €/week	1.595 €/week
	3 or 4 people	1.195 €/week	1.800 €/week		3 or 4 people	895 €/week	1.795 €/week
GRANADA, SALAMANCA & TENERIFE	1 or 2 people	495 €/week	795 €/week	VALENCIA	1 or 2 people	695 €/week	795 €/week
	3 or 4 people	695 €/week	995 €/week		3 or 4 people	895 €/week	995 €/week

**Price includes:** Private bathroom, fully equipped kitchen, cleaning once a week (1-hour daily cleaning available on request, 75 €/week), Internet access, gas, electricity, water costs & VAT (local taxes).  
**Private apartment** must be paid at time of booking and in case of cancellation no refund or credit towards purchase of other products applies. **An extra weekly supplement may be charged in case of a special event.**  
**High season dates (subject to availability):** Alicante: from June to September; Barcelona: from May to August + events; Granada: Easter; Madrid: from May to August + events; Marbella: from June to August; Salamanca: events; Seville: Easter & Feria de Abril; Tenerife: from June to January; Valencia: from June to September.  
 Prices are approximate and subject to surcharges during high season and events. Exact price quotes will be provided when requesting availability.

## Student shared flat for single use - Private Apartment



ALICANTE | BARCELONA | GRANADA | MADRID | MARBELLA | SALAMANCA | SEVILLE | TENERIFE | VALENCIA

Location	Type of apartment	Low season	High season	Location	Type of apartment	Low season	High season
ALICANTE & MARBELLA	1 or 2 people	1.700 €/4 weeks	3.100 €/4 weeks	GRANADA, SALAMANCA & TENERIFE	1 or 2 people	1.200 €/4 weeks	1.900 €/4 weeks
	3 or 4 people	2.000 €/4 weeks	3.500 €/4 weeks		3 or 4 people	1.600 €/4 weeks	2.300 €/4 weeks
BARCELONA & MADRID	1 or 2 people	1.900 €/4 weeks	3.400 €/4 weeks	SEVILLE & VALENCIA	1 or 2 people	1.700 €/4 weeks	3.100 €/4 weeks
	3 or 4 people	2.200 €/4 weeks	3.900 €/4 weeks		3 or 4 people	2.000 €/4 weeks	3.500 €/4 weeks

**Only available for stays of 4 weeks minimum.**  
**Price includes:** Bed linen, blankets, access to fully equipped kitchen and laundry room, bathroom, TV, WiFi access, central heating, gas, electricity and water costs. Cleaning service is not included.  
**Private apartment** must be paid at time of booking and in case of cancellation no refund or credit towards purchase of other products applies. **An extra weekly supplement may be charged in case of a special event.**  
**High season dates (subject to availability):** Alicante: from June to September; Barcelona: from May to August + events; Granada: Easter; Madrid: from May to August + events; Marbella: from June to August; Salamanca: events; Seville: Easter & Feria de Abril; Tenerife: from June to January; Valencia: from June to September.  
 Prices are approximate and subject to surcharges during high season and events. Exact price quotes will be provided when requesting availability.

## Student Residence & Guest House



BARCELONA | GRANADA | MADRID | MARBELLA | SALAMANCA | SEVILLE | VALENCIA

Location	Type of room	No meals	Half board	Full board	Private bathroom	Extra day (max. 3 days)	High season supplement
BARCELONA	Double room	200 €/week	225 €/week	265 €/week	65 €/week	35 €/night	(17/06 to 18/08) 25 €/week
	Single room	255 €/week	285 €/week	315 €/week	110 €/week	45 €/night	(17/06 to 18/08) 50 €/week
BARCELONA STUDY-HOTEL***	Double room	300 €/week	380 €/week	440 €/week	Included	45 €/night	-
	Single room	455 €/week	535 €/week	595 €/week	Included	75 €/night	-
GRANADA "Casa de Lenguas"	Double room	145 €/week	195 €/week	215 €/week	Included	35 €/night	-
	Single room	175 €/week	220 €/week	240 €/week	Included	45 €/night	-
SALAMANCA & SEVILLE "Casa de Lenguas"	Double room	145 €/week	195 €/week	215 €/week	65 €/week	35 €/night	-
	Single room	175 €/week	220 €/week	240 €/week	110 €/week	45 €/night	-
MADRID & VALENCIA	Double room	200 €/week	225 €/week	265 €/week	65 €/week	35 €/night	-
	Single room	255 €/week	285 €/week	315 €/week	110 €/week	45 €/night	-
MARBELLA	Double room	200 €/week	225 €/week	265 €/week	-	35 €/night	(10/06 to 25/08) 75 €/week
	Single room	255 €/week	285 €/week	315 €/week	-	45 €/night	(10/06 to 25/08) 125 €/week

**Price includes:** Cleaning service & meals (residences in Marbella include meals during the months of July & August only). Use of kitchen is not permitted.  
 In most cities we have several residences & guest houses.  
**Triple rooms** available when 3 students are traveling together at a discount of 20% from double room price per student. Discount does not apply on high season supplement.



**60% Spanish students**  
(except Granada & Seville)

**20 Spanish or English lessons per week**  
(in Granada & Seville only Spanish available)

**Full board accommodation:**  
3 meals per day

**All included in the price:**  
Tuition, accommodation, activities, excursions, 3 meals/day, books, study material, health insurance, sports, 24-hour supervision (except Granada & Seville)

## Junior & Teenagers Programs

### Residential Camp or Homestay Program - All included

	BARCELONA	GRANADA	MADRID	MARBELLA ALBERGUE	MARBELLA ALBORÁN	MARBELLA ALEMÁN	SALAMANCA	SEVILLE	VALENCIA
	Summer Camp 5-18 years old	Junior Program 14-18 years old	Summer Camp 5-18 years old	Summer Camp 16-18 years old	Summer Camp 13-18 years old	Summer Camp 5-13 years old	Summer Camp 5-18 years old	Junior Program 14-18 years old	Summer Camp 13-18 years old
2 weeks July	1.450 €	1.350 €	1.450 €	1.450 €	1.450 €	1.450 €	1.350 €	1.350 €	1.450 €
2 weeks August	1.300 €	x	x	x	1.300 €	1.300 €	1.300 €	x	1.300 €
4 weeks July	2.675 €	2.500 €	2.675 €	2.675 €	2.675 €	2.675 €	2.500 €	2.500 €	2.675 €
4 weeks August	x	x	x	x	2.400 €	2.400 €	x	x	x
6 weeks July/August	3.550 €	x	x	x	3.600 €	3.600 €	3.350 €	x	3.550 €
8 weeks July/August	x	x	x	x	4.500 €	4.500 €	x	x	x
1 week August	660 €	x	x	x	660 €	660 €	660 €	x	660 €
Extra week July*	785 €	695 €	785 €	785 €	785 €	785 €	695 €	695 €	785 €
Extra week August	660 €	x	x	x	660 €	660 €	660 €	x	660 €

**Level:** Non beginner & beginner, all levels  
Maximum 14 students per class.

\* The extra week is not guaranteed in July.

**Extra week and Camps in August:** Please check with our Head Office for availability.

### Day Camp

	BARCELONA	GRANADA	MADRID	MARBELLA ALBERGUE	MARBELLA ALBORÁN	MARBELLA ALEMÁN	SALAMANCA	SEVILLE	VALENCIA
	Summer Camp	Junior Program	Summer Camp	Summer Camp	Summer Camp	Summer Camp	Summer Camp	Junior Program	Summer Camp
1 week July/August	325 €	325 €	325 €	325 €	325 €	325 €	325 €	325 €	325 €
2 weeks July/August	650 €	650 €	650 €	650 €	650 €	650 €	650 €	650 €	650 €

**Level:** Non beginner & beginner, all levels  
Maximum 14 students per class.

**Day Camp:** From Monday to Friday. Only lunch included.

**Day Camp in August:** Please check with our Head Office for availability.

### Language course only

	BARCELONA	GRANADA	MADRID	MARBELLA ALBERGUE	MARBELLA ALBORÁN	MARBELLA ALEMÁN	SALAMANCA	SEVILLE	VALENCIA
	Summer Camp	Junior Program	Summer Camp	Summer Camp	Summer Camp	Summer Camp	Summer Camp	Junior Program	Summer Camp
1 week July/August	225 €	225 €	225 €	225 €	225 €	225 €	225 €	225 €	225 €
2 weeks July/August	450 €	450 €	450 €	450 €	450 €	450 €	450 €	450 €	450 €

**Level:** Non beginner & beginner, all levels  
Maximum 14 students per class.

**Language course only in August:** Please check with our Head Office for availability.



**All fees included:**  
tuition, accommodation,  
activities, excursions, full board,  
books, study material,  
health insurance!



## International Summer Camps - Dates, accommodation & ages

	BARCELONA   GRANADA   MADRID   MARBELLA   SALAMANCA   SEVILLE   VALENCIA							
	2012 Starting dates				Last day of each Camp	Type of accommodation		Ages
	July 1 <sup>st</sup>	July 15 <sup>th</sup>	July 29 <sup>th</sup>	August 12 <sup>th</sup>		Residence	Homestay	
Barcelona	✓	✓	✓	x	August 11 <sup>th</sup>	✓	x	5-18
Granada	✓	✓	x	x	July 28 <sup>th</sup>	✓	✓	14-18
Madrid	✓	✓	x	x	July 28 <sup>th</sup>	✓	x	5-18
Marbella Albergue	✓	✓	x	x	July 28 <sup>th</sup>	✓	✓	16-18
Marbella Alborán	✓	✓	✓	✓	August 25 <sup>th</sup>	✓	x	13-18
Marbella Alemán	✓	✓	✓	✓	August 25 <sup>th</sup>	✓	x	5-13
Salamanca	✓	✓	✓	x	August 11 <sup>th</sup>	✓	✓	5-18
Seville	✓	✓	x	x	July 28 <sup>th</sup>	✓	✓	14-18
Valencia	✓	✓	✓	x	August 11 <sup>th</sup>	✓	✓	13-18

For other starting dates please check with our Head Office for availability.



## Optional Sports

Sport	Hours/week	Prices
Tennis in Barcelona, Madrid, Marbella (all 3 camps) & Salamanca	5	169 €/2 weeks
Paddle in Marbella (all 3 camps)	5	169 €/2 weeks
Horseback riding in Madrid, Marbella (all 3 camps) & Salamanca	4,5	169 €/2 weeks
Golf in Marbella (all 3 camps)	5	255 €/2 weeks
Swimming in Madrid, Marbella (Alborán & Alemán)	4	95 €/2 weeks
Sailing in Valencia	8	255 €/2 weeks

Sports level: From beginner to advanced

## Other fees

Fee	Prices
Application fee	65 €
Uniform (optional)	75 €
Extra night	50 €
Day camp bus (daily transfer for 2 weeks). Minimum 5 students	145 €

## Pick-Up from airport, train/bus station to Summer Camps

Summer Camp	Transfer from/to	Prices per trip, per person	
		1 person	2 or more people
Barcelona	Barcelona airport, train or bus station	85 €	55 €/student
Granada	Granada airport, train or bus station	85 €	55 €/student
	Bus from and to Madrid*	145 €	145 €/student
Madrid	Madrid airport, train or bus station	85 €	55 €/student
Marbella	Malaga airport, train or bus station	85 €	55 €/student
	Bus from and to Madrid*	145 €	145 €/student
Salamanca	Madrid airport, train or bus station	180 €	105 €/student
	Bus from and to Madrid*	105 €	105 €/student
Seville	Seville airport, train or bus station	85 €	55 €/student
	Bus from and to Madrid*	125 €	125 €/student
Valencia	Valencia airport, train or bus station	85 €	55 €/student
	Bus from and to Madrid*	125 €	125 €/student

\*Return transfer from Madrid includes: Collection at Madrid airport, transfer to meeting point & bus to destination. Please check our bus schedule before planning your trip to Spain.

Mixed with 60% Spanish students!



<b>Application fee</b> \$ 100	<b>Starting dates:</b> Every Monday, all levels (including absolute beginners)	<b>Schools are open all year round</b>	<b>Small classes:</b> Maximum 6 students per class Maximum 8 students per class (during high season)	<b>1 lesson: 50 minutes</b>	<b>Prices for Mexico are in USD \$</b>	<b>Study materials: \$ 45 each book</b> (have to be paid with the application)	<b>National holidays*:</b> January 1 <sup>st</sup> , February 6 <sup>th</sup> , March 19 <sup>th</sup> , April 6 <sup>th</sup> , May 1 <sup>st</sup> , September 16 <sup>th</sup> , November 2 <sup>nd</sup> & 19 <sup>th</sup> , December 25 <sup>th</sup>
----------------------------------	---	--	--	-----------------------------	--	---	--

## Spanish in Mexico

### General Intensive & Super Intensive Courses

	GUANAJUATO   OAXACA   PUERTO VALLARTA				PLAYA DEL CARMEN			
	Part Time	Intensive	Super Intensive	Best of Both	Part Time	Intensive	Super Intensive	Best of Both
Lessons/week	15	20	25	15+10	15	20	25	15+10
1 week	\$ 164	\$ 199	\$ 230	\$ 448	\$ 188	\$ 233	\$ 271	\$ 494
2 weeks	\$ 328	\$ 398	\$ 460	\$ 896	\$ 376	\$ 466	\$ 542	\$ 988
3 weeks	\$ 492	\$ 597	\$ 690	\$ 1,344	\$ 564	\$ 699	\$ 813	\$ 1,482
4 weeks	\$ 640	\$ 776	\$ 897	\$ 1,747	\$ 733	\$ 908	\$ 1,056	\$ 1,926
5 weeks	\$ 788	\$ 955	\$ 1,104	\$ 2,150	\$ 902	\$ 1,117	\$ 1,299	\$ 2,370
6 weeks	\$ 936	\$ 1,134	\$ 1,311	\$ 2,553	\$ 1,071	\$ 1,326	\$ 1,542	\$ 2,814
7 weeks	\$ 1,084	\$ 1,313	\$ 1,518	\$ 2,956	\$ 1,240	\$ 1,535	\$ 1,785	\$ 3,258
8 weeks	\$ 1,232	\$ 1,492	\$ 1,725	\$ 3,359	\$ 1,409	\$ 1,744	\$ 2,028	\$ 3,702
9 weeks	\$ 1,380	\$ 1,671	\$ 1,932	\$ 3,762	\$ 1,578	\$ 1,953	\$ 2,271	\$ 4,146
10 weeks	\$ 1,528	\$ 1,850	\$ 2,139	\$ 4,165	\$ 1,747	\$ 2,162	\$ 2,514	\$ 4,590
11 weeks	\$ 1,676	\$ 2,029	\$ 2,346	\$ 4,568	\$ 1,916	\$ 2,371	\$ 2,757	\$ 5,034
12 weeks	\$ 1,824	\$ 2,208	\$ 2,553	\$ 4,971	\$ 2,085	\$ 2,580	\$ 3,000	\$ 5,478
Extra week	\$ 148	\$ 179	\$ 207	\$ 403	\$ 169	\$ 209	\$ 243	\$ 444

**Starting dates:** Every Monday  
**Level:** All levels

In the exceptional case that only 1 or 2 students are enrolled in a course in the same level group, the number of classes will be reduced slightly.  
Best of Both course: 15 One on One lessons + 10 group lessons per week.

### Long Duration Courses +12 weeks

	GUANAJUATO   OAXACA   PUERTO VALLARTA				PLAYA DEL CARMEN			
	Part Time	Intensive	Super Intensive	Best of Both	Part Time	Intensive	Super Intensive	Best of Both
Lessons/week	15	20	25	15+10	15	20	25	15+10
+12 weeks	\$ 1,824	\$ 2,208	\$ 2,553	\$ 4,971	\$ 2,085	\$ 2,580	\$ 3,000	\$ 5,478
Extra week	\$ 148	\$ 179	\$ 207	\$ 403	\$ 169	\$ 209	\$ 243	\$ 444

**Starting dates:** Every Monday  
**Level:** All levels

In the exceptional case that only 1 or 2 students are enrolled in a course in the same level group, the number of classes will be reduced slightly.  
Best of Both course: 15 One on One lessons + 10 group lessons per week.

### Combination Courses

	GUANAJUATO   OAXACA   PUERTO VALLARTA			PLAYA DEL CARMEN		
	Combination Intensive	Combination Intensive+	Combination Super Intensive	Combination Intensive	Combination Intensive+	Combination Super Intensive
Lessons/week	25+10	25+15	25+20	25+10	25+15	25+20
1 week	\$ 460	\$ 545	\$ 630	\$ 521	\$ 631	\$ 731
2 weeks	\$ 920	\$ 1,090	\$ 1,260	\$ 1,042	\$ 1,262	\$ 1,462
3 weeks	\$ 1,380	\$ 1,635	\$ 1,890	\$ 1,563	\$ 1,893	\$ 2,193
Extra week	\$ 414	\$ 490	\$ 567	\$ 468	\$ 567	\$ 657

**Starting dates:** Every Monday  
**Level:** All levels

Maximum 6 students in the group course (Maximum 8 students during high season).  
Combination Intensive course: 25 group lessons + 10 One on One lessons per week.  
Combination Intensive+ course: 25 group lessons + 15 One on One lessons per week.  
Combination Super Intensive course: 25 group lessons + 20 One on One lessons per week.

\*Please check <http://www.enforex.com/holidays-mexico.html> for updated holidays before planning your trip to Mexico.

**IMPORTANT:** Please check with our Head Office in order to confirm exact dates before planning your program because schools will be closed during official holidays (national and local).

Also, please be aware that whenever one of these holidays is on Sunday, generally the day off will be the Monday after. These dates are provisional and we cannot be responsible for changes made by local authorities.



## One on One Course - Private tuition

GUANAJUATO   OAXACA   PUERTO VALLARTA			
Type of course	Lessons/week	1-3 weeks	Extra week
One on One	10	\$ 230/week	\$ 207/week
	15	\$ 315/week	\$ 283/week
	20	\$ 400/week	\$ 360/week

**Starting dates:** Any weekday  
**Level:** All levels

Price per class: \$ 25 (1 student in class); \$ 20 (2 students in class, price per student).  
Supplement per class outside normal hours (ask for availability): \$ 15.  
For specialized subjects, please ask our Head Office for availability and quotes.

## One on One Course - Private tuition

PLAYA DEL CARMEN			
Type of course	Lessons/week	1-3 weeks	Extra week
One on One	10	\$ 250/week	\$ 225/week
	15	\$ 360/week	\$ 324/week
	20	\$ 460/week	\$ 414/week

**Starting dates:** Any weekday  
**Level:** All levels

Price per class: \$ 28 (1 student in class); \$ 22 (2 students in class, price per student).  
Supplement per class outside normal hours (ask for availability): \$ 15.  
For specialized subjects, please ask our Head Office for availability and quotes.

## DELE Official Exam Preparation Course

GUANAJUATO		
Type of course	Lessons/week	4 weeks
B1 / B2	20	\$ 776
C1 / C2	20	\$ 995

**Starting dates:** April 30<sup>th</sup> (exam date: May 25<sup>th</sup>); July 30<sup>th</sup> (exam date: August 24<sup>th</sup>); October 15<sup>th</sup> (exam date: November 9<sup>th</sup>)  
**Level:** All levels. To enroll in a DELE course, students must have at least the same level of Spanish taught in the course

The price does not include the exam fee (approx. \$94 for A1, \$110 for A2, \$134 for B1, \$150 for B2, \$158 for C1 and \$166 for C2). To formally register for the exam, please send us a copy of your passport together with your personal details, permanent address and full payment at least 10 weeks before the exam date. The student's exam is not guaranteed unless the payment is done. Inscription fee: \$5.  
For those wishing to take the A1 / A2 exam there are no specific DELE preparation lessons. Instead we recommend that you follow 4 weeks of our Intensive course (along with some One on One lessons) in order to be prepared to take the exam.

Maximum 16 students per class.  
C1 / C2 level: Maximum 12 students per class.

## Spanish Teacher Training Course

GUANAJUATO   OAXACA   PLAYA DEL CARMEN   PUERTO VALLARTA		
Type of course	Lessons/week	2 weeks
Guanajuato, Oaxaca & Puerto Vallarta Combi Course	10 group + 15 One on One	\$ 924
Playa del Carmen Combi Course	10 group + 15 One on One	\$ 1,024

**Starting dates:** Every Monday  
**Level:** Native Spanish or High intermediate & advanced level

Minimum 3 students per class.  
Maximum 5 students per class.

## Christmas Program

GUANAJUATO   OAXACA   PUERTO VALLARTA			
Type of course	Lessons/week	1 week	2 weeks
Christmas Program	20	\$ 199	\$ 398

**Starting dates:** December 19<sup>th</sup> & 26<sup>th</sup> 2011, December 24<sup>th</sup> & 31<sup>st</sup> 2012  
**Level:** Non beginner & beginner, all levels

## Christmas Program

PLAYA DEL CARMEN			
Type of course	Lessons/week	1 week	2 weeks
Christmas Program	20	\$ 233	\$ 466

**Starting dates:** December 19<sup>th</sup> & 26<sup>th</sup> 2011, December 24<sup>th</sup> & 31<sup>st</sup> 2012  
**Level:** Non beginner & beginner, all levels

## Business or Medical Spanish Course

GUANAJUATO   OAXACA   PLAYA DEL CARMEN   PUERTO VALLARTA					
Type of course	Lessons/week	1 week	2 weeks	3 weeks	Extra week
Guanajuato, Oaxaca & Puerto Vallarta Business or Medical Spanish Course	25	\$ 439	\$ 878	\$ 1,317	\$ 395
Playa del Carmen Business or Medical Spanish Course	25	\$ 485	\$ 970	\$ 1,455	\$ 437

**Starting dates:** Every Monday  
**Level:** High intermediate & advanced level

25 lessons per week: 15 Spanish language + 10 Business or Medical lessons.  
Minimum 3 students per class. Maximum 16 (average 6-8) students per class.

## Spanish + Volunteer

GUANAJUATO		
Type of course	Lessons/week	4 weeks
4 weeks of Intensive course + Volunteer Placement	20	\$ 776

**Starting dates:** Every Monday  
**Required level:** Upon completing the Spanish course you must have a B1 level (intermediate)

**Registration fee:** \$ 160.  
**Includes:** 4 weeks Intensive Spanish course + 4 weeks Voluntary work (minimum).

## Group Programs

GUANAJUATO   OAXACA   PLAYA DEL CARMEN   PUERTO VALLARTA	
Type of course	Prices
Prices, dates, timetable, duration & course content according to the needs of the group	Excellent group prices!!!
Please contact: <a href="mailto:groups@enforex.es">groups@enforex.es</a>	



The accommodation is available from 12:00 noon on the Sunday prior to the first day of the course (Monday), until 12:00 noon on the Saturday following the last day of class (Friday). Additional placement fee of \$ 75 per week for accommodation without taking a course. Shared double or triple room (with another student in the same room): If you reserve a double or triple room and there is no other student with whom you can share, we reserve the right to change your room at any time.

Extra days available at an additional cost. Maximum 3 days, the cost of an entire week will be charged if you need 4 or more additional days.

**NOTE:** It is necessary to leave a deposit upon arrival (\$ 150 payable in cash or with credit card authorization) when staying in Student apartment or Residence. The deposit shall be returned to the student at the end of the stay providing there are no damages. The students should contact our central office in order to be informed about the place and the time to pick up the keys of their rooms. The students must respect all rules and regulations set by families, residences and shared flat administrations. If there is damage to the premises the student must pay for the corresponding amount.

## Accommodation in Mexico

### Host Family

GUANAJUATO | OAXACA | PLAYA DEL CARMEN | PUERTO VALLARTA

Location	Type of room	Bed & breakfast	Half board	Supplement
				Extra day (max. 3 days)
GUANAJUATO & OAXACA	Double room	\$ 160/week	\$ 185/week	\$ 35/night
	Single room	\$ 185/week	\$ 210/week	\$ 45/night
PLAYA DEL CARMEN	Double room	\$ 189/week	\$ 210/week	\$ 35/night
& PUERTO VALLARTA	Single room	\$ 210/week	\$ 238/week	\$ 45/night

**Price includes:** Blankets, bed linen & meals.  
**Double room** in Oaxaca, Playa del Carmen & Puerto Vallarta only available for 2 students traveling together.



### Shared Flat Student Apartment (without meals)

GUANAJUATO				
Location	Type of room	Regular	Supplements	
			Private bathroom	Extra day (max. 3 days)
GUANAJUATO	Double room	\$ 170/week	\$ 65/week	\$ 35/night
	Single room	\$ 205/week	\$ 110/week	\$ 45/night

**Price includes:** Bed linen, blankets, access to fully equipped kitchen and laundry room, shared bathroom, shared TV, cleaning service once a week in communal areas, central heating and gas costs.  
**Double room for single use** available on request and with a supplement of 35% over single room price.  
**Triple rooms** on request when reservation and arrival are shared (discount of 20% from double room price per student).

### Student Residence

OAXACA   PLAYA DEL CARMEN				
Location	Type of room	Bed & breakfast	Supplement	
			Extra day (max. 3 days)	
OAXACA & PLAYA DEL CARMEN	Double room	\$ 224/week	\$ 32/night	
	Single room	\$ 280/week	\$ 40/night	

**Price includes:** Continental breakfast.  
**Double room** only available for 2 students traveling together.

### Other fees

Fee	Prices	
Application fee for any enrollment type	\$ 100	
Changes after arrival	On accommodation	\$ 175
	Change of school or program	\$ 175
Accommodation & Placement fee	Accommodation without taking a course	\$ 75/week

### Pick-Up - Mexico Schools

School	Transfer from/to	Prices per trip, per person	
		1 person	2 or more people
Guanajuato	Leon airport	\$ 85	\$ 69/student
	Bus station	\$ 55	\$ 45/student
Oaxaca & Puerto Vallarta		included on arrival if homestay is booked	
Playa del Carmen	Cancun airport	\$ 65	\$ 55/student



## Our destinations in Latin America





**Application fee**  
\$ 100 in Latin  
America or  
100 € in Cuba

**Starting dates:**  
Every Monday,  
all levels  
(including  
absolute beginners)

**Schools  
are open  
all year round\***

**Prices for  
Latin America  
are in USD \$  
(except  
Cuba in €)**

**Accommodation & placement fee** (accommodation  
without taking a course): **\$ 75/week**  
**Changes after arrival** (on accommodation /  
Change of school or program): **\$ 175**

# Spanish in Latin America

## Argentina

### BARILOCHE | BUENOS AIRES | MENDOZA

### CORDOBA

Type of course	Lessons/week	Prices
Intensive	20 in group	\$ 205/week
Super Intensive	30 in group	\$ 275/week
Immersion	20 in group + 5 One on One	\$ 325/week
One on One	10 One on One	\$ 355/week
Buenos Aires & Mendoza Spanish + Tango / Salsa	20 in group + 8 dance lessons	\$ 355/week
Buenos Aires Volunteer Program		\$ 380/registration fee

**Starting dates:** Every Monday, all year round  
**Level:** All levels

1 lesson = 55 minutes.  
Study material included.  
Maximum students per class: in Bariloche & Mendoza 7; in Buenos Aires 8.  
Long period discount (more than 10 weeks): 10% off the course price.  
Volunteer Program available after a 4-week Spanish program and for a minimum duration of 4 weeks.

**National holidays:** January 1<sup>st</sup>, February 20<sup>th</sup> & 21<sup>st</sup>, March 24<sup>th</sup>, April 2<sup>nd</sup> & 6<sup>th</sup>, May 1<sup>st</sup> & 25<sup>th</sup>, June 20<sup>th</sup>, July 9<sup>th</sup>, August 20<sup>th</sup>, October 15<sup>th</sup>, November 19<sup>th</sup>, December 8<sup>th</sup> & 25<sup>th</sup>. These holidays are subject to change by decree signed by the President of the nation.  
**High season supplement:** Bariloche (from June 3<sup>rd</sup> to September 29<sup>th</sup>): \$ 90/week. Buenos Aires (from January 1<sup>st</sup> to February 11<sup>th</sup> and from June 17<sup>th</sup> to August 11<sup>th</sup>): \$ 45/week. Mendoza (from January 29<sup>th</sup> to March 31<sup>st</sup> and from June 3<sup>rd</sup> to September 29<sup>th</sup>): \$ 45/week.  
**Airport pick-up:** \$ 70 per person, per trip. Compulsory with arrival between 10 pm and 6 am.  
**Note:** The schools reserve the right to change a group course into One on One tuition in case there is no other student at the same level. If this happens, there will be a reduction of class hours of 50%.

Type of course	Lessons/week	Prices
Intensive	20 in group	\$ 155/week
Super Intensive	30 in group	\$ 210/week
Immersion	20 in group + 5 One on One	\$ 265/week
One on One	10 One on One	\$ 280/week
Spanish + Tango / Salsa	20 in group + 8 dance lessons	\$ 280/week
Volunteer Program		\$ 270/registration fee

**Starting dates:** Every Monday, all year round  
**Level:** All levels

1 lesson = 55 minutes.  
Study material included.  
Maximum students per class: 7.  
Long period discount (more than 10 weeks): 10% off the course price.

**National holidays:** January 1<sup>st</sup>, February 20<sup>th</sup> & 21<sup>st</sup>, March 24<sup>th</sup>, April 2<sup>nd</sup> & 6<sup>th</sup>, May 1<sup>st</sup> & 25<sup>th</sup>, June 20<sup>th</sup>, July 9<sup>th</sup>, August 20<sup>th</sup>, October 15<sup>th</sup>, November 19<sup>th</sup>, December 8<sup>th</sup> & 25<sup>th</sup>. These holidays are subject to change by decree signed by the President of the nation.  
Volunteer Program available after a 4-week Spanish program and for a minimum duration of 4 weeks.  
**Airport pick-up:** \$ 55 per person, per trip. Compulsory with arrival between 10 pm and 6 am.  
**Note:** The school reserves the right to change a group course into One on One tuition in case there is no other student at the same level. If this happens, there will be a reduction of class hours of 50%.

Location	Type of accommodation	Type of room	Without meals	Bed & breakfast*	Half board*	Supplements	
						Private bathroom	Extra day
BARILOCHE & MENDOZA	Home stay	Double room	-	\$ 160/week	\$ 225/week	-	\$ 45/night
	Home stay	Single room	-	\$ 215/week	\$ 285/week	\$ 50/week	\$ 45/night
BUENOS AIRES	Home stay	Double room	-	\$ 160/week	\$ 225/week	-	\$ 45/night
	Home stay	Single room	-	\$ 215/week	\$ 285/week	\$ 50/week	\$ 45/night
	Student residence	Double room	\$ 145/week	-	-	-	\$ 45/night
	Student residence	Single room	\$ 230/week	-	-	\$ 50/week	\$ 45/night
CORDOBA	Home stay	Double room	-	\$ 110/week	\$ 160/week	-	\$ 45/night
	Home stay	Single room	-	\$ 165/week	\$ 215/week	\$ 50/week	\$ 45/night
	Student residence	Double room	\$ 115/week	-	-	-	\$ 45/night
	Student residence	Single room	\$ 220/week	-	-	\$ 50/week	\$ 45/night

**Bariloche & Mendoza home stay:** double room only available for 2 students traveling together.  
\* No meals provided on Sunday.



Santiago de Chile students



Buenos Aires school

\*Please check <http://www.enforex.com/holidays-latinamerica.html> for updated holidays, as they may be subject to change.

**IMPORTANT:** Please check with our Head Office in order to confirm exact dates before planning your program because schools will be closed during official holidays (national and local).

Also, please be aware that whenever one of these holidays is on Sunday, generally the day off will be the Monday after. These dates are provisional and we cannot be responsible for changes made by local authorities.



## Bolivia

### SUCRE

Type of course	Lessons/week	Prices
Intensive	20 in group	\$ 165/week
Super Intensive	20 in group + 10 One on One	\$ 290/week
One on One	20 One on One	\$ 255/week
Activa Spanish Program	20 in group + 5 private activities	\$ 435/week
Activa One on One Spanish Program	20 One on One + 5 private activities	\$ 520/week
Volunteer Program		\$ 150/registration fee

**Starting dates:** Every Monday  
**Level:** All levels

1 lesson= 60 minutes.  
Study material included.  
Maximum students per class: 5.  
**National holidays:** January 1<sup>st</sup>, February 21<sup>st</sup> & 22<sup>nd</sup>, April 5<sup>th</sup>, May 1<sup>st</sup> & 25<sup>th</sup>, June 11<sup>th</sup>, August 6<sup>th</sup>, October 2<sup>nd</sup>.  
The school will close for Christmas: from December 17<sup>th</sup> to January 1<sup>st</sup>.  
Volunteer Program available after a 4-week Spanish program and for a minimum duration of 4 weeks.  
**Airport pick-up:** \$ 30 per person, per trip.

Location	Type of accommodation	Type of room	Without meals	Half board	Extra day
SUCRE	Home stay	Single room	-	\$ 155/week	\$ 30/night
	Student residence	Double room	\$ 109/week	-	\$ 30/night
	Student residence	Single room	\$ 155/week	-	\$ 30/night

Accommodation supplement during Volunteer Program: \$ 45 per week.

## Chile

### SANTIAGO DE CHILE

Type of course	Lessons/week	Prices
Intensive	20 in group	\$ 195/week
Super Intensive	30 in group	\$ 275/week
Immersion	20 in group + 5 One on One	\$ 325/week
One on One	10 One on One	\$ 355/week
Spanish + Salsa	20 in group + 8 dance lessons	\$ 355/week
Volunteer Program		\$ 340/registration fee

**Starting dates:** Every Monday, all year round  
**Level:** All levels

1 lesson= 55 minutes. Study material included. Maximum students per class: 8.  
**National holidays:** January 1<sup>st</sup>, April 6<sup>th</sup> & 7<sup>th</sup>, May 1<sup>st</sup> & 21<sup>st</sup>, July 2<sup>nd</sup> & 16<sup>th</sup>, August 15<sup>th</sup>, September 17<sup>th</sup>, 18<sup>th</sup> & 19<sup>th</sup>, October 15<sup>th</sup> & 28<sup>th</sup>, November 1<sup>st</sup> & 2<sup>nd</sup>, December 8<sup>th</sup> & 25<sup>th</sup>.  
Long period discount (more than 10 weeks): 10% off the course price.  
Volunteer Program available after a 4-week Spanish program and for a minimum duration of 4 weeks.  
**Airport pick-up:** \$ 70 per person, per trip. Compulsory with arrival between 10 pm and 6 am.  
**Note:** The school reserves the right to change a group course into One on One tuition in case there is no other student at the same level. If this happens, there will be a reduction of class hours of 50%.

Location	Type of accommodation	Type of room	1 week	2 weeks	3 weeks	4 weeks	Extra week	Private bathroom	Extra day
SANTIAGO DE CHILE	Home stay, bed & breakfast*	Double room	\$ 145	\$ 290	\$ 435	\$ 580	\$ 145	-	\$ 45/night
	Home stay, bed & breakfast*	Single room	\$ 195	\$ 390	\$ 585	\$ 780	\$ 195	\$ 50/week	\$ 45/night
	Home stay, half board*	Double room	\$ 205	\$ 410	\$ 615	\$ 820	\$ 205	-	\$ 45/night
	Home stay, half board*	Single room	\$ 259	\$ 518	\$ 777	\$ 1.036	\$ 259	\$ 50/week	\$ 45/night
	Student residence (without meals)	Double room	\$ 130	\$ 260	\$ 390	\$ 520	\$ 130	-	\$ 45/night
	Student residence (without meals)	Single room	\$ 210	\$ 420	\$ 630	\$ 840	\$ 210	\$ 50/week	\$ 45/night

\* No meals provided on Sunday.

## Cuba

### HAVANA | SANTIAGO DE CUBA | TRINIDAD

Type of course	Lessons/week	1 week	2 weeks	3 weeks	4 weeks	Extra week
Intensive	20 in group	-	395 €	505 €	615 €	109 €
Super Intensive	20 in group + 5 One on One	-	469 €	609 €	755 €	145 €
Super Intensive	20 in group + 10 One on One	-	535 €	709 €	885 €	175 €
One on One	20 One on One	299 €	439 €	579 €	715 €	139 €
Dance Course	5	79 €	158 €	237 €	316 €	79 €
Music Course	5	99 €	198 €	297 €	396 €	99 €

**Starting dates:** Every Monday, all year round  
**Level:** All levels  
1 lesson= 50 minutes. Study material included. We advise the student to bring a grammar book themselves. Maximum students per class: 3.

**National holidays:** January 1<sup>st</sup>, March 8<sup>th</sup>, May 1<sup>st</sup>, July 26<sup>th</sup>, December 25<sup>th</sup>.  
Dance and Music course can only be booked in addition to a language course.  
**Airport pick-up:** Havana 45 € (one way), Santiago de Cuba 25 € (one way), Trinidad 15 € (one way, arrival only).  
If enrollment is done for 2 cities, prices are calculated separately. **Note:** The school reserves the right to change a group course into One on One tuition in case there is no other student at the same level. If this happens, there will be a reduction of class hours of 25%.

Location	Type of accommodation	Type of room	1 week	2 weeks	3 weeks	4 weeks	Extra week	Private bathroom	Extra day
HAVANA, SANTIAGO DE CUBA & TRINIDAD	Home stay, half board	Double room	205 €	445 €	685 €	925 €	239 €	-	35 €/night
	Home stay, half board	Single room	285 €	615 €	949 €	1.279 €	335 €	50 €/week	45 €/night

Double room only available for 2 students traveling together.



## Costa Rica

## FLAMINGO BEACH | HEREDIA | MONTEVERDE

Type of course	Lessons/week	1 week	2 weeks	3 weeks	4 weeks	Extra week
Intensive	20 in group	\$ 360	\$ 720	\$ 1,020	\$ 1,320	\$ 330
Super Intensive	27,5 in group	\$ 495	\$ 990	\$ 1,410	\$ 1,820	\$ 455
One on One	20 One on One	\$ 490	\$ 980	\$ 1,470	\$ 1,960	\$ 490
Volunteer Program						\$ 150/registration fee

**Starting dates:** Every Monday  
**Level:** All levels

1 lesson = 55 minutes. Textbook included. Maximum students per class: 4.  
**National holidays:** April 5<sup>th</sup>, 6<sup>th</sup> & 11<sup>th</sup>, May 1<sup>st</sup>, July 25<sup>th</sup>, August 15<sup>th</sup>, December 25<sup>th</sup>. Heredia school is open all year round. Flamingo Beach school will close for Christmas: from December 24<sup>th</sup> to 28<sup>th</sup>. Monteverde school will close for Christmas: from December 17<sup>th</sup> to 21<sup>st</sup>.  
One on One: For less than 20 lessons per week: \$ 30 per lesson.  
Minor fee (14 to 17 years old): \$ 229.  
Volunteer Program available after a 4-week Spanish program and for a minimum duration of 4 weeks.  
**Airport pick-up:** Heredia included arriving on Sunday if accommodation is booked. **Flamingo Beach & Monteverde:** Travel packet: arriving on Saturday at Juan Santamaria airport, one night at bed & breakfast (private room) in San Joaquin de Flores + one way transportation to Flamingo Beach/Monteverde: \$ 100. **Flamingo Beach:** When arriving at Liberia airport in Guanacaste to Flamingo Beach: \$ 100 per person, per trip.

## CORONADO

Type of course	Lessons/week	Prices
Intensive	20 in group	\$ 269/week
One on One	10 One on One	\$ 265/week
Volunteer Program		\$ 175/registration fee

**Starting dates:** Every Monday  
**Level:** All levels

1 lesson = 50 minutes. Textbook included. Maximum students per class: 5.  
**National holidays:** April 5<sup>th</sup>, 6<sup>th</sup> & 11<sup>th</sup>, May 1<sup>st</sup>, July 25<sup>th</sup>, August 2<sup>nd</sup> & 15<sup>th</sup>, October 12<sup>th</sup>. School will close for Christmas: from December 22<sup>nd</sup> to January 4<sup>th</sup>.  
Volunteer Program available after a 2-week Spanish program and for a minimum duration of 4 weeks.  
**Airport pick-up:** \$ 40 per person, per trip.

## PLAYA JACO

Type of course	Lessons/week	Prices
Intensive	20 in group	\$ 355/week
One on One	10 One on One	\$ 265/week

**Starting dates:** Every Monday  
**Level:** All levels

1 lesson = 50 minutes. Textbook included. Maximum students per class: 5.  
**National holidays:** April 5<sup>th</sup>, 6<sup>th</sup> & 11<sup>th</sup>, May 1<sup>st</sup>, July 25<sup>th</sup>, August 2<sup>nd</sup> & 15<sup>th</sup>, October 12<sup>th</sup>. School will close for Christmas: from December 22<sup>nd</sup> to January 4<sup>th</sup>.  
**Airport pick-up:** \$ 115 per person, per trip. Available only when arriving from 6 am to 7 pm.

Location	Type of accommodation	Type of room	1 week	2 weeks	3 weeks	4 weeks	Extra week	Supplements	
								Private bathroom	Extra day
CORONADO	Home stay, half board	Double room	\$ 139	\$ 278	\$ 417	\$ 556	\$ 139	\$ 25/week - \$ 30/night	\$ 30/night
	Home stay, half board	Single room	\$ 165	\$ 330	\$ 495	\$ 660	\$ 165	\$ 50/week - \$ 30/night	\$ 30/night
	Student residence (without meals)	Double room	\$ 119	\$ 238	\$ 357	\$ 476	\$ 119	-	\$ 30/night
	Student residence (without meals)	Single room	\$ 155	\$ 310	\$ 465	\$ 620	\$ 155	-	\$ 30/night
FLAMINGO BEACH	Home stay, half board	Single room	\$ 150	\$ 300	\$ 450	\$ 600	\$ 150	-	\$ 22/night
	Private studio - apartment		\$ 489	\$ 975	\$ 1,465	\$ 1,949	\$ 489	-	\$ 60/night
	Dormitory (without meals)	Double room	\$ 229	\$ 455	\$ 685	\$ 909	\$ 229	-	\$ 40/night
	Dormitory (without meals)	Single room	\$ 325	\$ 650	\$ 975	\$ 1,300	\$ 325	-	\$ 40/night
HEREDIA & MONTEVERDE	Home stay, half board	Single room	\$ 150	\$ 300	\$ 450	\$ 600	\$ 150	-	\$ 22/night
	Private studio - apartment		\$ 455	\$ 909	\$ 1,365	\$ 1,819	\$ 455	-	\$ 60/night
	Dormitory (without meals)	Double room	\$ 195	\$ 390	\$ 585	\$ 780	\$ 195	-	\$ 40/night
	Dormitory (without meals)	Single room	\$ 295	\$ 585	\$ 880	\$ 1,170	\$ 295	-	\$ 40/night
PLAYA JACO	Home stay, half board	Double room	\$ 149	\$ 298	\$ 447	\$ 596	\$ 149	-	\$ 30/night
	Home stay, half board	Single room	\$ 185	\$ 370	\$ 555	\$ 740	\$ 185	-	\$ 30/night
	Shared flat (without meals)	Double room	\$ 155	\$ 310	\$ 465	\$ 620	\$ 155	-	\$ 30/night
	Shared flat (without meals)	Single room	\$ 209	\$ 418	\$ 627	\$ 836	\$ 209	-	\$ 30/night

**Double room** only available for 2 students traveling together.



Flamingo Beach school



Coronado school

## Dominican Republic

### SANTO DOMINGO | SOSUA

Type of course	Lessons/week	1 week	2 weeks	3 weeks	4 weeks	Extra week
Intensive	20 in group	\$ 255	\$ 465	\$ 675	\$ 879	\$ 209
Super Intensive	30 in group	\$ 365	\$ 685	\$ 985	\$ 1,289	\$ 305
One on One	20 One on One	\$ 385	\$ 715	\$ 1,039	\$ 1,365	\$ 325

**Starting dates & Levels: Beginners:** January 2<sup>nd</sup>, 16<sup>th</sup> & 30<sup>th</sup>, February 13<sup>th</sup> & 28<sup>th</sup>, March 12<sup>th</sup> & 26<sup>th</sup>, April 9<sup>th</sup> & 23<sup>rd</sup>, May 7<sup>th</sup> & 21<sup>st</sup>, June 4<sup>th</sup> & 18<sup>th</sup>, July 2<sup>nd</sup>, 16<sup>th</sup> & 30<sup>th</sup>, August 13<sup>th</sup> & 27<sup>th</sup>, September 10<sup>th</sup> & 25<sup>th</sup>, October 8<sup>th</sup> & 22<sup>nd</sup>, November 5<sup>th</sup> & 19<sup>th</sup>, December 3<sup>rd</sup>, 17<sup>th</sup> & 31<sup>st</sup>.  
All higher group levels and One on One lessons start every Monday

1 lesson= 45 minutes.  
Study material included.  
Maximum students per class: 7.  
Schools open all year round.  
**National holidays:** January 1<sup>st</sup> & 21<sup>st</sup>, February 27<sup>th</sup>, April 6<sup>th</sup>, May 1<sup>st</sup>, September 24<sup>th</sup>, December 25<sup>th</sup>.  
Long period discount (more than 9 weeks): 10% off for the whole course including our own accommodation possibilities (home stay/school apartment in Santo Domingo or school apartment/school studio in Sosua).  
**Airport pick-up: Santo Domingo:** \$ 45 per person, per trip. **Sosua:** \$ 35 per person, per trip.

Location	Type of accommodation	Type of room	1 week	2 weeks	3 weeks	4 weeks	Extra week	Supplements	
								High season	Extra day
CABARETE	2-star hotel studio, bed & breakfast	Single room	\$ 275	\$ 565	\$ 855	\$ 1,139	\$ 289	(15/12 to 05/01) +20%/week	\$ 75/night
	Home stay, half board	Single room	\$ 295	\$ 575	\$ 869	\$ 1,169	\$ 299	-	\$ 75/night
	School apartment, self catering	Single room	\$ 215	\$ 455	\$ 685	\$ 915	\$ 235	-	\$ 75/night
	2-star apart-hotel, self catering	Single room	\$ 469	\$ 975	\$ 1,475	\$ 1,979	\$ 505	(15/12 to 05/01) +20%/week	\$ 75/night
SANTO DOMINGO	Middle class hotel, bed & breakfast	Single room	\$ 615	\$ 1,285	\$ 1,955	\$ 2,629	\$ 675	(15/12 to 05/01) +20%/week	\$ 80/night
	School apartment, bed & breakfast	Single room	\$ 215	\$ 399	\$ 599	\$ 805	\$ 205	-	\$ 75/night
	School studio, bed & breakfast (no kitchen)	Single room	\$ 215	\$ 399	\$ 599	\$ 805	\$ 205	-	\$ 75/night
	Middle class hotel, bed & breakfast	Single room	\$ 539	\$ 1,139	\$ 1,755	\$ 2,365	\$ 615	(15/12 to 05/01) +20%/week	\$ 75/night
SOSUA	School apartment, bed & breakfast	Single room	\$ 215	\$ 399	\$ 599	\$ 805	\$ 205	-	\$ 75/night
	School studio, bed & breakfast (no kitchen)	Single room	\$ 215	\$ 399	\$ 599	\$ 805	\$ 205	-	\$ 75/night
	Middle class hotel, bed & breakfast	Single room	\$ 539	\$ 1,139	\$ 1,755	\$ 2,365	\$ 615	(15/12 to 05/01) +20%/week	\$ 75/night

**Cabarete accommodation** is available for Sosua students only.  
**Sosua school apartment/studio:** breakfast is served Monday through Saturday, except on National holidays.  
**Double rooms** are available on request and only for 2 students traveling together: 25% discount on the single room price.



Santo Domingo school



Quito school

## Ecuador

### QUITO

Type of course	Lessons/week	Prices
Intensive	20 in group	\$ 165/week
Super Intensive	20 in group + 10 One on One	\$ 290/week
One on One	20 One on One	\$ 255/week
Activa Spanish Program	20 in group + 5 private activities	\$ 435/week
Activa One on One Spanish Program	20 One on One + 5 private activities	\$ 520/week
Volunteer Program		\$ 150/registration fee

**Starting dates:** Every Monday  
**Level:** All levels

1 lesson= 60 minutes.  
Study material included.  
Maximum students per class: 5.  
**National holidays:** January 1<sup>st</sup>, February 21<sup>st</sup> & 22<sup>nd</sup>, April 5<sup>th</sup>, May 1<sup>st</sup> & 24<sup>th</sup>, August 10<sup>th</sup>, October 9<sup>th</sup>, November 2<sup>nd</sup> & 3<sup>rd</sup>, December 6<sup>th</sup>, 25<sup>th</sup> & 31<sup>st</sup>. The school will close for Christmas: from December 17<sup>th</sup> to January 1<sup>st</sup>.  
Volunteer Program available after a 4-week Spanish program and for a minimum duration of 4 weeks.  
**Airport pick-up:** \$ 30 per person, per trip.

Location	Type of accommodation	Type of room	1 week	2 weeks	3 weeks	4 weeks	Extra week	Extra day
QUITO	Home stay, half board	Single room	\$ 155	\$ 310	\$ 465	\$ 620	\$ 155	\$ 30/night
	Student residence (without meals)	Double room	\$ 95	\$ 190	\$ 285	\$ 380	\$ 95	\$ 30/night
	Student residence (without meals)	Single room	\$ 139	\$ 278	\$ 417	\$ 556	\$ 139	\$ 30/night

**Accommodation supplement during Volunteer Program:** \$ 45 per week.



# Guarantees & General conditions

- Enforex is a fully private enterprise and accredited center of the **Instituto Cervantes**.
- Enforex guarantees that all programs, accommodation, and complementary services described in the dates/prices brochure for the year 2012 are true (any and all special arrangements and/or agreements should be set in writing and signed by Enforex).
- The personnel in charge of airport pick-up and transportation to accommodation are insured, completely familiar with the area and know exactly where the students are to be dropped off.
- Enforex is a member of the following national and international organizations: eduSpain, NAFSA, Ideal Quality Certificate, AATSP, AEEM, AMACFE, FEDELE, AEAEC, ACTFL & ELITE.
- Our academic centers in Alicante, Barcelona, Granada, Madrid, Marbella, Salamanca, Seville, Tenerife and Valencia have been approved by the Association Eduespaña and by the Madrid Chamber of Commerce.
- Enforex guarantees a maximum of 10 students per classroom.
- The **Enforex conditions do not apply to partner schools**. Each partner school has its own conditions. For more information, please contact our Head Office.
- Students should be aware that they may appear in Enforex's promotional materials or photos.
- The published offers cannot be accumulated. All offers are subject to availability. There will be no changes made to bookings that have been received prior to the promotion. All offers and promotions will be applied at the time of the booking. Discounts that became available after the first enrollment are not valid.
- In the exceptional case that there is only 1 or 2 students enrolled on a course in the same level group, the number of lessons per week will be reduced slightly.
- Any complaints need to be given in writing and within the first 24 hours. Otherwise students will lose the right to any compensation, refund or changes. Enforex will accept any suggestions or requests only on a information level and to improve our services.

#### ACCOMMODATION:

- For registrations received a week or less prior to the beginning of a course, Enforex does not guarantee the type of accommodation desired and requested by the student due to the fact that priority is given to those students who have registered further in advance.

- In the event that a student is not satisfied with the assigned accommodation and he/she is rightfully justified in his claim, he/she will be allowed to change to another accommodation of the same type (3 changes maximum) and should let his/her wishes be known to the person in charge during his/her first week of staying in the program.
- All students should inform Enforex or the host family in advance of their approximate time of arrival. In the event that one of the previously mentioned parties is not contacted, Enforex will not be held responsible for greeting or picking up the student upon arrival.
- When a student enrolled in a Spanish course requires accommodation for a family member or friend, Enforex does not guarantee said accommodation due to the fact that other Enforex students have priority regarding the accommodation.
- If a student decides that he/she wants to postpone or take a break from any program for unjustified personal reasons, he/she will lose any right to a monetary refund, and the course will not be made up.

#### AIRPORT PICK-UP SERVICES:

- The flight information (place, date, hour and flight number) must be confirmed in writing at least one week prior to arrival. Otherwise, Enforex will not be held responsible for picking up the student at the airport and there will be no refund.
- If the student cancels the airport pick-up service less than one week prior to arrival, he/she will lose his/her right to a refund of the cost of said service.
- In the event of any delay or changes in flight information without previous notification, Enforex will not be held responsible for picking up the student at the airport and there will be no refund.

#### HOLIDAYS:

- Please check <http://www.enforex.com/holidays-spain.html> for updated holidays before planning your trip to Spain (see page 7).
- In case of two holidays within one week (Monday to Friday), one day of the missed lessons will be recuperated (except Cadiz, Malaga & Pamplona).
- There will be no refund of classes missed due to national or local holidays except for One on One classes which will be recuperated in any case.

## General courses Cancellations / Changes

#### COURSES CANCELLATIONS:

- All program fees must be paid at least 3 weeks prior to arrival otherwise Enforex reserves the right to cancel the student's place.
- The 250 € deposit will not be returned for any cancellations made.
- A minimum of 4 weeks will be charged for cancellations made or noticed once the course has started or with less than 3 weeks before arrival.
- All refunds will have an administration charge of 10% (a minimum of 65 €).
- All students who wish to cancel their program (course and/or accommodation) prior to their arrival should notify Enforex in writing by fax, e-mail ([registration@enforex.es](mailto:registration@enforex.es)), letter or telegram. Cancellations not received via one of the 4 aforementioned means will not be accepted.
- Once the chosen program has begun (Spanish course and/or accommodation), the student will not receive any type of refund (except in the cases of cancellation policy).
- Enforex cannot be held responsible for cancellations due to Act of God, health or personal problems.

- Cancellation fee after an Invitation Visa is issued is a minimum of 350 € or 35% of the total cost.
- Any change of accommodation, school or program after arrival will incur a fee of 125 € (subject to availability).
- Any break during the course of your program will incur the aforementioned fee (100 €) however the accommodation must be paid in full for the original program length (subject to availability).

#### HIGH SCHOOL CANCELLATIONS:

- 250 € will be charged for any cancellation made with more than 3 months notice.
- A 2.000 € cancellation fee will be charged for the High School program with less than 3 months notice.
- Once the High School program has started no refund will be given.

#### SUMMER RESIDENTIAL PROGRAM CANCELLATIONS:

- No refund will be given 10 days before arrival or once the program has started.
- 50% of the course fee will be charged for cancellations made from 11 days to 3 weeks before arrival.

## Useful information

#### VISAS FOR SPAIN:

- Citizens of countries belonging to the European Union do not need a Visa to enter Spain.
- Students coming from other countries should obtain information regarding the requirements for obtaining a **Visado (Visa)** at their nearest Spanish Embassy or Consulate. The certificates that accredited and confirm the enrolment in a Spanish program at Enforex can only be signed, sealed and sent by people authorized by Enforex, who will not be held responsible for rejected Visa applications due to the fact that these documents do not have any official power and merely serve as confirmation of a course in one of our centres. Such documents will only be sent to cover the amount of course time initially contracted by the student. Enforex will send out, free of charge and to any student who asks for them, the following documents (if and only if the total cost of the program has been paid):
  - Confirmation of the Spanish program chosen by the student.
  - Invoice for the total cost of the program in question (course + accommodation).
- In the event that the student should urgently need the originals of any of these documents, Enforex will send them and charge the cost of the express mail to the student (110 €).

- If student visa is rejected Enforex will charge the student 100 € per invitation letter sent, the 250 € deposit and any additional basic costs. The student will be obliged to show Enforex the original formal proof of the rejected visa in order to receive the refund. If this copy is not received by Enforex, 100% of the cost of the program will be charged.
- Any refund from Enforex will have a 10% charge.

#### OPTIONAL INSURANCE:

- Students are not covered for any illnesses, accidents, loss of personal property (neither at their accommodation nor in or out of the classroom). Enforex recommends the use of an optional insurance, which is available to all students who wish to contract it.

#### AGREEMENT:

- Upon signing the registration form or paying the course fees, the student accepts all the conditions described above. If, under any circumstances uncontrollable by Enforex, the prices of accommodation go up, Enforex will notify the student ahead of time of said changes. This price list replaces the previously existing one and is valid from 1<sup>st</sup> January 2012 until 31<sup>st</sup> December 2012 for all programs taking place between these two dates. Enforex is not responsible for typographical errors and/or misprints contained in this brochure.

Emergency Enforex phone  
**+34 636 450 998**

Ask for the general brochure in your own language!



2012

24

## Spanish Language Schools

Alicante | Barcelona | Cadiz | Granada | Madrid | Malaga | Marbella  
Pamplona | Salamanca | Seville | Tenerife | Valencia

9

## International Summer Camps

Barcelona | Granada | Madrid | Marbella | Salamanca | Seville | Valencia

20

## Destinations in Latin America

Argentina | Bolivia | Chile | Costa Rica | Cuba | Dominican Republic  
Ecuador | Guatemala | Mexico | Peru



# Enforex



BROCHURE CREATED WITH THE ASSISTANCE  
 OF THE MADRID CHAMBER OF COMMERCE  
 (CAMARA DE COMERCIO E INDUSTRIA DE MADRID)



Discount-Ryugaku.Com

世界規模で最もビクター数の多い  
独立系語学コース予約サイト

Book course at Enforex, Barcelona for worldwide lowest price  
and Read reviews of Enforex, Barcelona from former participants at  
<http://www.languagecourse.net/discount-ryugaku/gakko-enforex-en.php3>

Our language travel experts will be happy to assist you.

+34-93 268 87 76  
[info@discount-ryugaku.com](mailto:info@discount-ryugaku.com)