

ENGLISH LANGUAGE

Company®

Sydney, Australia



LanguageCourse.de

Weltweit meistbesuchte
unabhängige Site für
Sprachkurs Buchungen

Kurs buchen bei English Language Company, Sydney für den weltweit niedrigsten Preis
und lesen Sie Bewertungen zu English Language Company, Sydney von ehemaligen Teilnehmern auf
<http://www.languagecourse.net/schule-english-language-company-sydney.php3>

Unsere Sprachreise-Experten stehen Ihnen gerne zur Verfügung.

0800-999 88 84
info@languagecourse.de

Welcome to English Language Company

Located in the heart of Sydney city centre, English Language Company (ELC) has a large modern campus with cafes, shops and popular sights close by.

ELC students come from over 35 countries to study our wide range of quality English courses.

We pride ourselves on offering excellent teaching and services to all of our students. We look forward to helping you achieve your goals and we are sure that you will enjoy studying at ELC and living in Sydney.

David and Lyn Scott

ELC founders and managers



Contents

- 1 Why choose ELC?
- 2 Location
- 3 Facilities
- 4 Studying at ELC
- 7 General English
- 8 English for Academic Purposes
- 9 IELTS Exam Preparation
- 10 Cambridge Exam Preparation
- 11 English for TESOL
- 12 Working in Australia
- 14 Accommodation
- 15 Support and Guidance
- 16 Social activities
- 17 Travel and Adventure



Photo: Hamilton Lund: Tourism NSW

Why choose ELC?

1 Award winning English language school

ELC won the prestigious international award "LTM Star Language School Southern Hemisphere" in 2009 and 2007 and was shortlisted for this award in 2008 so you can be confident that you will receive the very best education and service.

2 Fantastic nationality mix

ELC students come from over 35 countries so you will have to speak English to communicate and make lifelong friends from around the world.

3 Excellent teachers

Our students consistently rate ELC teachers as excellent. All teachers are highly qualified and experienced holding university degrees and specialist TESOL qualifications.

4 Wide range of quality courses customized to suit your needs

We offer an extensive range of core English courses. These are complimented by your choice of elective classes so that you will learn exactly what you need to.

5 Learning and technology

ELC online is our unique online learning program and school community. You can start studying and making friends even before you leave home!

6 Pathways to Australian universities and colleges

Study EAP and benefit from our direct entry agreements (no IELTS necessary) with many top Australian universities and colleges.

7 Optional activities, clubs and special interest classes

We offer optional special interest classes, activities and clubs each week so that you can do the things that interest you and use your English!

8 Excellent accommodation options

ELC has a wide range of quality accommodation options to suit your needs and your budget, including our own student residence 'ELC House'.

9 The leader in work programs for students

Student visa holders can use ELC's unique Student Work Assistance Program (SWAP) for free. Students on our Work and Travel program have membership of Australia's largest temporary recruitment agency for working holiday makers.

10 Great city centre location

Our modern school is right in the heart of Sydney, close to shops, transport and entertainment districts.

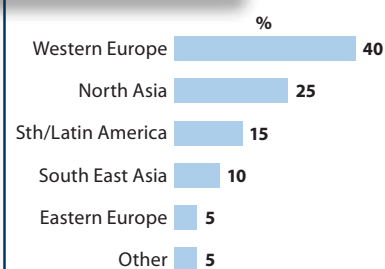


Star Language School
Southern Hemisphere

Winner 2009
Shortlisted 2008
Winner 2007



Your classmates will come from:



Sydney is a great choice for international students. It's the largest and most cosmopolitan city in Australia but it's also beautiful, safe and clean.

It has great shopping and nightlife and a lively city centre. There are many concerts, festivals and sporting events all year around.

The climate is great with hot summers and mild winters so it's easy to enjoy the outdoors. Sydney is a large city but you can go surfing, scuba-diving, bushwalking or just relax on the beach – all within the Sydney metropolitan area.

Very importantly, our students always find people from Sydney very friendly and welcoming and happy to talk.



Photo: Hamilton Lund; Tourism NSW



Location and facilities



ENGLISH LANGUAGE Company®

ELC Location

ELC is in the heart of Sydney.

- In the centre of Sydney city
- 2-minute walk from Sydney's premier shopping centre
- 1-minute walk from the main train station
- 3-minute walk from Darling Harbour
- 5-minutes by train to the Opera House
- 10-minute walk to ELC Student House
- 1-minute walk to Base Backpackers
- 15-minutes by bus to Glebe YHA
- Close to city centre cafes and cinemas



"The location is very good, as we have everything close to the school: Darling Harbour, the train station, the Queen Victoria Building and all the shops in George Street... Sydney is an amazing city with hundreds of things to do!"

Haruka - Japan



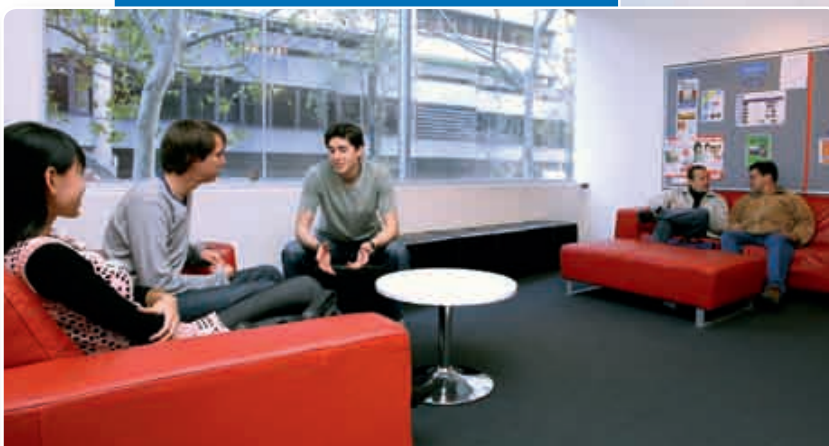
Facilities

The school is modern, bright and spacious with superb facilities including:

- 22 large well-equipped classrooms (most with the latest digital technology)
- Comfortable student common room and dining area
- Study centre and library equipped with computers for self-study
- Casual computer lounge available throughout the day
- Student kitchen
- Free WiFi throughout the school



**ENGLISH
LANGUAGE
Company®**



Your course, your choice

We understand that no two students are the same. People have different reasons for learning English and have different learning styles and interests.

To make sure that you achieve your learning goals we have developed a unique study system which allows you to customize your course to suit your own needs, goals and preferences.

Major Course

1 Needs
3 hours/day
15 hours/week

This is your main course of study. You will take this class every morning. Choose from:

- General English
- Cambridge Exam Preparation
- IELTS Exam Preparation
- English for Academic Purposes
- English for TESOL

Special Focus Modules

2 Goals
1 hour/day
5 hours/week

These are afternoon elective classes. Choose your class according to your specific goals, such as Business English, Speaking or Exam Preparation.

Choose these when you start at ELC and change every 4 weeks if you wish.

English Extras

3 Interests
1 hour/day
5 hours/week

Choose from our selection of special interest classes and activities such as Australian Studies, Pronunciation,

Excursions or Independent Study. Just go to the one that interests you most each day.

3 steps to your customized course

- 1 Enrol in your **Major Course**
- 2 Select afternoon **Special Focus Modules** according to your needs when you arrive at ELC
- 3 Take any optional **English Extra** classes or activities which interest you each day

Included in all courses

- Coursebook
- ELC online learning and social networking
- Free Internet access and WiFi
- Weekly progress tests
- Tutorials
- Certificate of completion

ELC online

All students can maximize their learning via our unique online learning platform 'ELC online'. It is included in your fees.

Before you leave home

After enrolment you will receive your login. You will take a short test and be assigned a personalized study plan of online lessons. So you can start studying even before you leave home.

During your course

You can:

- do online grammar and vocabulary exercises
- practise reading and listening
- complete assignments set by your teacher
- view your progress records
- practise for exams

You may login using our computers at ELC or at any time from your own computer.



After you finish

You will have access to all of the online resources for 3 months after you finish your course and our weekly news lesson and ELC community for life!





Timetable

Depending on your level you will follow one of these timetables:

8.30am – 3.15pm

9.15am – 4.00pm

9.30am – 4.15pm

All classes have one hour for lunch and two short coffee breaks.

Course level guidelines

CEFR	General English Course	EAP Course	Cambridge ESOL exams	TESOL Course	IELTS test scores	What you can do now
C2	7 Proficient		CPE		7.5+	<ul style="list-style-type: none"> Enter most university degree and postgraduate degrees.
C1	6 Advanced		CAE		7.0	
					6.5	
B2+	5 Pre-advanced	EAP 3			6.0	<ul style="list-style-type: none"> Enter many university degree and diploma courses. Work professionally in an English-speaking environment.
B2	4 Upper Intermediate	EAP 2	FCE	English for TESOL	5.5	<ul style="list-style-type: none"> Enter some university degree and diploma courses. Do an internship in an English-speaking country. Use English confidently in the workplace.
B1	3 Intermediate	EAP 1	PET		5.0	<ul style="list-style-type: none"> Vocational and academic preparation courses. Use limited English in the workplace.
A2	2 Pre-intermediate		KET		4.5	
					4.0	
					3.0	
A1	1 Elementary					

Your first day

Class placement

On your first day at ELC you will take a placement test and have a spoken interview.

Levels

We have 7 levels from elementary to proficient. You will join a class of students who have a similar level to you.

Study plan

We will also help you to plan your course by advising you on Special Focus Modules and activities that you can choose from.

Your classes

Methodology

You will learn how English is spoken in many situations. You will learn how to use grammar and new vocabulary and practise pronunciation, listening, reading and writing.

You will have many opportunities to communicate throughout the lesson.

Lessons and technology

Lessons are all face-to-face but teachers use modern technology to ensure that your lessons are dynamic.

Small classes

We have small classes so that your teacher can give all students the attention they need.

Progress tests

Every Monday you will take a short progress test to revise and assess what you have studied.

Tutorials

You will have regular tutorials with your class teacher to discuss your progress and review your study plan.

Your outcomes

Certificates

When you finish your course you will receive an ELC certificate.

You can use this certificate as a record of your studies for higher education institutes or employers.



Your course, your choice

Special Focus Modules

In the afternoons full-time students choose from our range of Special Focus Modules. Depending on your level and course choices include:

You need to focus on:	Choose from these Special Focus Modules:
Fluency	<p>Speaking, Listening & Vocabulary (SLV) This popular intensive conversation skills class helps you make fast progress with your everyday speaking skills.</p> <p>Real English This class helps you use English effectively for everyday tasks in Australia, such as shopping, banking and using public transport.</p>
English for work	<p>Business English This class is for students who work or would like to work in a company where a good level of spoken or written English is required.</p> <p>English for Hospitality and Tourism If you need English to work in a hotel, restaurant, airline or as a tour guide then this is the ideal class for you.</p>
Skills and language	<p>Writing Skills Learn how to write effective letters, emails, reports and essays – a useful class for students who will do further studies or work in English.</p> <p>Grammar Improve your accuracy in spoken and written English and learn how to express yourself in more complex ways.</p>
Exam skills	<p>IELTS Exam Skills & Practice</p> <p>Cambridge Exam Skills & Practice</p>



"My classmates are very friendly and very helpful to me. The environment is very good to use English because the nationality mix is perfect."

Hye Rin – Korea

English Extras

We offer a range of workshops, activities and classes for 1 hour each day. Some take the form of more traditional lessons while others are social, sporting and tourism-based. You simply choose the ones that interest you each week.

If you have a student visa 20 hours per week of study are compulsory. English Extras are optional but are recommended and are included in your course fees.

Monday	Tuesday	Wednesday	Thursday	Friday
<ul style="list-style-type: none"> Pronunciation Conversation 	<ul style="list-style-type: none"> Work Oz Conversation 	<ul style="list-style-type: none"> Soccer Excursions Songs Film club 	<ul style="list-style-type: none"> Australian Studies Conversation 	<ul style="list-style-type: none"> TV and Media Studies Conversation
<ul style="list-style-type: none"> Exam practice Guided Independent Study 				

Australian studies

Learn about Australian culture, history, music and travel.

TV and Media studies

This is our weekly listening, vocabulary and speaking lesson based around TV programs, podcasts and news.

Work Oz

Get ready to work in Australia. Prepare your resume, practise job interviews, learn useful language for work.

Conversation

Practise speaking in a relaxed environment, with a different topic every day.

Guided Independent study

ELC's multimedia centre provides a modern, well-resourced learning centre where you can follow your ELC online learning program or access our extensive range of resources.

Excursions

Visit places of interest around Sydney with the guidance of an ELC teacher.

General English

Learn to communicate effectively and speak English with confidence

General English classes focus on improving your all-round English and in particular your communication skills.

You will make fast progress in:

- Everyday communication
- Fluency
- Pronunciation
- Vocabulary
- Grammar
- Listening
- Reading
- Writing

Start dates Any Monday

Course length 2-52 weeks

Class size Max 15 (average 12)
Premium English includes 1:1 lessons

Course levels 7 levels of General English classes from elementary to proficient mean that you will always be in a class with students at your level. Each level usually takes 12 weeks to complete.



"The courses are very interesting, interactive and organized and the teachers are very capable. The school has a high level of teaching."
Anouk - Belgium

Course types

Intensive General English

This is our popular full-time course which allows you to improve your all-round English combined with areas of individual focus.

Course hours

15 hrs

General English

5 hrs

Special Focus Module

5 hrs

English Extras

15 hrs

General English

Semi-Intensive General English

This part-time course is ideal for students who want to combine study and sightseeing.

Not available to student-visa holders

Premium English

This course is ideal for students who need to make very fast progress in a short time. It combines group study with one-to-one lessons individually designed for you.

15 hrs

General English

5 hrs

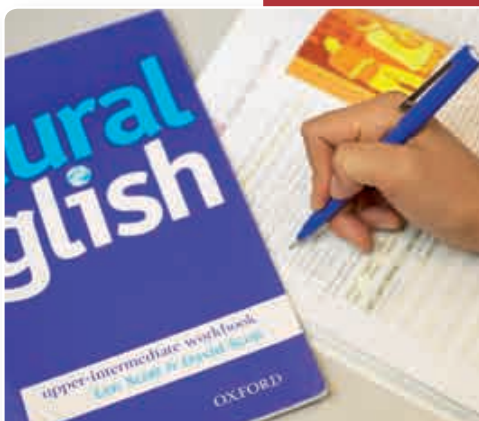
One-to-one Lessons

5 hrs

English Extras

Special Focus Modules for General English

Choose from the Modules on page 6.



English for Academic Purposes (EAP)

Excel in your college or university studies



"The teachers are very good and organize activities for everyone in class to interact and practise. The extra activities encourage people to talk together. Thanks to this I made a lot of friends."

Panissara – Thailand
Went on to do a master's degree at Wollongong university

This course is for students who intend to do further study in English, for example at university or college.

The course focuses on improving all-round language ability while thoroughly preparing you for the challenges of academic study.

You will study:

- Academic vocabulary
- Academic writing skills
- Academic listening and reading
- Grammar in context
- Oral presentation skills and tutorials
- Academic research and study skills

Start dates Any Monday

Course length 5-30 weeks

Class size Max 15 max (average 12)

Course levels Each level usually requires 10 weeks to complete.

	Entry Level
EAP 1	Intermediate / IELTS 5.0 / TOEFL 500
EAP 2	Upper Intermediate / IELTS 5.5 / TOEFL 525
EAP 3	Advanced / IELTS 6.0+ / TOEFL 575

Course hours

15 hrs	5 hrs	5 hrs
English for Academic Purposes	Special Focus Module	English Extras

Special Focus Modules for EAP

Choose from our range of Special Focus Modules. We recommend:

- Speaking, Listening & Vocabulary (SLV)
- Grammar
- Writing skills
- IELTS Exam skills & Practice
- Business English



Our educational partners

ELC has agreements with many major universities and colleges which allow our students to enter directly into certificate, diploma, graduate and postgraduate programs without an IELTS test.

Our partners include:

- University of Western Sydney
- Wollongong University
- Australian Catholic University National (ACU)
- Southern Cross University
- TAFE NSW
- CQ University
- The Hotel School, Sydney
- Sydney College of Business and IT (SCBIT)
- MEGT Institute
- Sydney Institute of Business Technology (SIBT)
- Australian College of Commerce and IT (ACCIT)
- Hostec Academy
- Endeavour College of Natural Health
- The Australasian College
- The Sydney Film School
- Kaplan Business School

Check our website for more partners.

How do I gain direct entry?

To gain direct entry without an IELTS test, students need to successfully complete an EAP course at the appropriate level (as specified by the institution).

Successful course completion is based on:

- Class participation
- Coursework including presentations
- Assignments and other homework
- Exit test

If you haven't decided on your further studies our academic counsellor will be happy to advise you on the courses available and will help you complete your application.

IELTS Exam Preparation

Get the IELTS score you need for further study

The IELTS examination is widely recognized around the world as a measure of spoken and written English. An IELTS test score is required by Australian universities and many colleges for entry into their programs.

Our IELTS course will help you to develop the skills and techniques for IELTS success.

You will improve your:

- Examination skills
- Fluency and pronunciation
- Grammar and vocabulary
- Writing skills
- Listening and reading skills

ELC online and IELTS

Our IELTS course includes access to our exclusive IELTS online exam practice via ELC online.



Start dates Every 4 weeks

Course length 4-24 weeks

Class size Max 15 (average 12)

Course levels Each level usually requires 12 weeks to complete.

IELTS 1	Intermediate / IELTS 5.0 +
IELTS 2	Upper Intermediate / IELTS 5.5 +

Course hours

15 hrs	5 hrs	5 hrs
IELTS Exam Preparation	Special Focus Module	English Extras

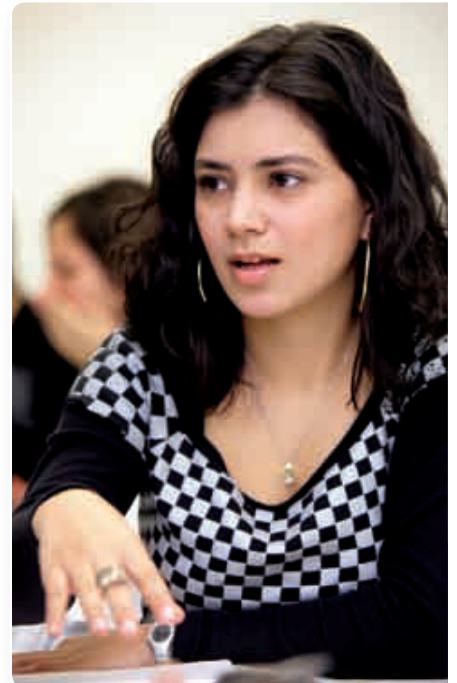
Special Focus Modules for IELTS

Choose Special Focus Modules which provide you with further practice in the skills you need.

- Grammar
- Writing skills
- IELTS Exam skills & Practice
- Business English

General English (15 hours per week) **combined with IELTS Preparation** in the afternoons (5 hours per week) is also possible.

Just enrol in General English and choose the IELTS Special Focus Module on arrival.



"The teachers are awesome! They don't only have great teaching skills, they also have great personalities! They understand students and are close to us. I really feel as if it was my family."

Vincent - France

Cambridge Exam Preparation

Achieve an internationally-recognized qualification from Cambridge University ESOL

The Cambridge ESOL exams can help you to gain entrance to university, improve your job prospects and measure your progress in English.

Our Cambridge Preparation course will enable you to make progress in your all-round English ability whilst developing skills and techniques for exam success.

You will improve your:

- Examination skills
- Fluency and pronunciation
- Grammar and vocabulary
- Writing skills
- Listening and reading skills



"Thanks to my advanced lessons at ELC, I improved my English very quickly. The teachers are amazing and very funny. I met loads of wonderful people from different countries and I'm sure that we will be friends forever. It is the best trip of my life and I would recommend this school to everybody who wants to have fun and learn a lot at the same time."
Jessica – Switzerland

Course types

Intensive Cambridge

Our **intensive course** is our most popular course. Study takes place over 10 or 12 weeks and combines an exam preparation morning class with your choice of Special Focus Modules.

Start dates Fixed start dates (see course dates and fees)

Course length 12 weeks (10 weeks Jan start date)

Class size Max 14 (average 12)

Course levels FCE and CAE

Course hours

15 hrs

Cambridge Course

5 hrs

Special Focus Module

5 hrs

English Extras

Cambridge Special Focus Modules

These afternoon classes provide students with the extra support they may need to excel in individual examination papers.

- Business English
- Cambridge Writing skills
- Cambridge Grammar & Vocabulary
- Cambridge Speaking & Listening
- Examination Skills & practice

Accelerated Cambridge

Our **accelerated course** is ideal for students who have only a short time available to prepare for the exam. A smaller class, who you study with for 25 hours per week, means that you can receive more individual attention and progress at an accelerated rate.

Start dates Fixed start dates. (See course dates and fees)

Course length 6 weeks

Class size Max 12 (average 10)

Course levels FCE and CAE

Course hours

25 hrs

Cambridge Exam Preparation

5 hrs

Online exam practice

Online Cambridge Exam Practice Module

To prepare you for the computer-based exam, Accelerated Cambridge students receive access to our online Cambridge exam practice module which will usually provide an extra 5 hours per week of study.

ELC is an approved Cambridge ESOL Computer-Based Test centre

At the end of the course students take the computer-based version of their exam at ELC. Results are usually received within 3 weeks of taking the test.

English for TESOL

Classroom English, skills and practical techniques for English teachers

This course is for students who are interested in becoming teachers of English. It is also suitable for teachers who want to improve their use of English in the classroom and acquire new skills and ideas for teaching adults, teenagers and children.

You will:

- Improve your spoken and written English for TESOL
- Improve your vocabulary and grammar for TESOL
- Improve your reading, listening and writing skills
- Learn useful classroom language
- Learn TESOL methodology
- Develop your practical teaching techniques
- Observe experienced teachers at ELC and at a local Australian school

Start dates Every 5 weeks

Course length 10 weeks

Class size Max 15 (average 12)

Course levels High intermediate / IELTS 5.0+

Course hours

20 hrs

English for TESOL

5 hrs

English Extras

Course topics include:

- Classroom management
- Lesson preparation
- Motivation
- Learning styles
- Learner errors
- How children learn
- Activities for young learners
- Materials development

Assessment

The course is assessed through teaching practice and written assignments. On successful completion of the course trainees receive an ELC certificate in English for TESOL.



Sample Timetable

Week 3	Monday	Tuesday	Wednesday	Thursday	Friday
Lesson 1	Speaking skills Talking about lesson types and qualities of a good lesson	How to teach functional language What are language functions?	How to teach functional language How to use dialogues in the classroom	How to practise language Spoken and written practice activities	Classroom management Setting up pairs and groups
Lesson 2	Writing skills Aims and stages of a lesson	Lesson planning How to write a lesson plan	Classroom English Getting students to join in	Classroom English Confirming and encouraging students	Teaching practice
Lesson 3	Grammar for the teacher Asking questions	Speaking & pronunciation for the teacher Asking questions in class	Observation of a class	Vocabulary & writing for the teacher Description of a place	Teaching practice
English Extras	English Extras	English Extras	English Extras	English Extras	English Extras

Work and Travel Company

ELC works with Work and Travel Company to offer you a comprehensive package of services to meet all of the needs of working holiday visitors to Australia.

Work and Travel Company facts

Work and Travel Company (WTC) is the largest job agency just for working holiday makers in Australia. Each year we place up to 5000 members in fantastic jobs all over Australia.

Work and Travel Company is located just 2 minutes from the school and is exclusive to students who study at ELC.

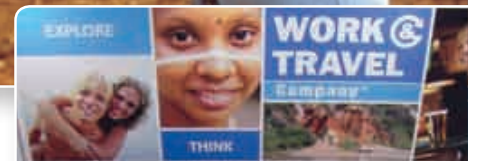


Work and Travel Company membership includes:

- 12 months unlimited job placement all over Australia
- Paid jobs in resort hotels, restaurants, bars, farms, factories etc
- Tax file number application lodged and an Australian bank account opened
- Sim Card
- Orientation with WTC staff
- Private mailbox at WTC with mail forwarding services anywhere in Australia
- Free luggage storage for 3 months
- International phone card
- Toll-free 24/7 emergency assistance number
- YHA card for accommodation and travel discounts
- Weekly travel information seminars
- Fantastic social activities program with members from all over the world

Requirements:

- Minimum intermediate level of spoken English
- Working holiday visa



Internship Program

A professional internship in Australia will help you to develop the skills and knowledge required for success in your career.

You will:

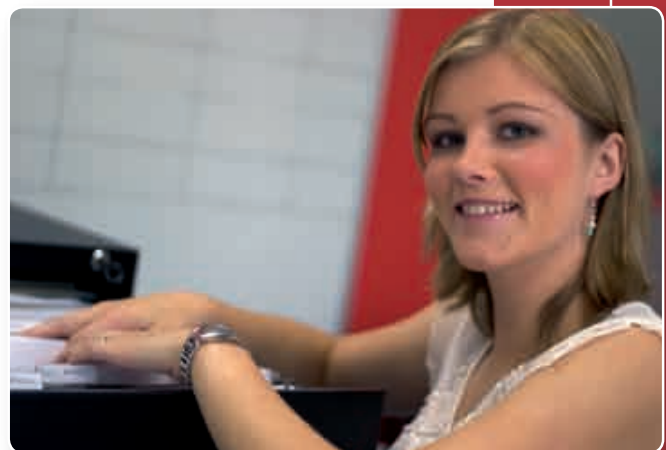
- Gain valuable experience within your field
- Develop workplace English skills
- Improve your career opportunities
- Internationalise your resume

Internships are available in:

- Architecture
 - Banking
 - Engineering
 - Graphic design
 - Tourism
 - Information technology
 - Marketing
 - Media
- plus many more

Requirements:

- Minimum upper-intermediate level of English
- Working holiday or eligibility for 416 Special Program visa
- Some previous study and/or experience in the internship field chosen



Accommodation

ELC offers you a choice of quality accommodation options to suit your preferences and budget. All of these choices will give you a comfortable and safe environment where you can feel at home.

Homestay

Stay with one of our friendly families and you will experience typical Australian life.

- Our families are carefully selected for their warmth and desire to welcome you into their family
- Homes are all comfortable and clean and close to public transport
- You will have your own fully-furnished room
- You will share breakfast and dinner with the family (also lunch at the weekend)



ELC House

ELC House is exclusive to ELC students and is located close to the school. This townhouse is very modern and well equipped.

- Located close to Darling Harbour (a ten-minute walk to ELC)
- In a safe area with shops and cafes nearby
- Choose from single or 2-3 bedrooms
- Shared bathrooms
- Modern and well-equipped house with TV, computer, free WiFi, kitchen, laundry
- Self-catering
- Secure house with swipe-card entry



Hostels

Short-term hostel (Base Backpackers)

Base provides modern backpacker accommodation in the heart of the city. It is located next door to the school.

- City centre location
- Clean, comfortable and very convenient
- 4-bed rooms and dormitories
- Laundry, kitchen, TV lounge, internet access, bar/café

Long-term hostel (Glebe YHA)

Glebe is a pleasant area close to Sydney university. Popular with students, it has many cafes and weekend markets.

- 10-minute bus journey to ELC
- Clean and comfortable with good facilities
- Single, twin or 4-bedrooms
- Laundry, kitchen, TV lounge, internet access



Airport pick-up

We can arrange for you to be met at the airport and taken to your accommodation.

ELC
Student
House



Support and Guidance

ELC staff are available whenever you need some help. We do everything we can to make your stay in Australia as enjoyable as possible.

We can offer you:

- Advice on everyday life in Australia such as transport, tourism and medical enquiries
- Travel information and bookings
- Accommodation advice such as settling in with your host family or renting your own accommodation in Sydney
- Welfare advice
- Academic counselling: Our dedicated academic counsellor can advise you on your studies at ELC, give you information about further study in Australia and help you to apply to universities or colleges



Hostels

For more photos of our accommodation see our website.



Social activities

Make new friends
see amazing sights
and travel Australia

Social activities

We organize great things for you to do every week to ensure that you make the most of your time with ELC! We hope that you will make friends, have fun and practise your English!

- Museums, exhibitions and galleries
- Beach barbecues
- Parties and bars
- Sightseeing trips
- Weekend excursions



Sports and leisure

We arrange fun games, tournaments and lessons for many sports such as:

- Soccer
- Beach volleyball
- Surfing
- Diving

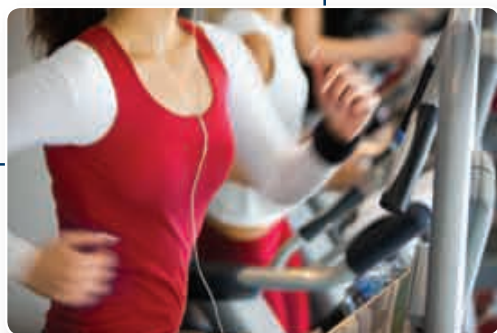


V-Club student special

All ELC students receive an exclusive discount to V-club fitness centre, a 1-minute walk from the school. No joining fee and flexible membership.



- Dance
- Yoga
- Boxing
- Fitness



"The school organizes many things to do at the weekend or after class. It was a great way to practise my English and make friends with people from all over the world!"
Camilo - Colombia

Travel and adventure

Australia is a fantastic place to travel with amazing sights and experiences, good accommodation and transport. We have teamed up with some of Australia's premier student and backpacker travel specialists to offer ELC students discounted prices and great deals. Go to www.englishlanguagecompany.com/travel for more details.



Our travel partners:



Adventure tours and transport around Australia



Accommodation in Australia and New Zealand stayatbase.com



Flights, transport, trips and tours

**ENGLISH
LANGUAGE**

Company®



LanguageCourse.de

Weltweit meistbesuchte
unabhängige Site für
Sprachkurs Buchungen

Kurs buchen bei English Language Company, Sydney für den weltweit niedrigsten Preis
und lesen Sie Bewertungen zu English Language Company, Sydney von ehemaligen Teilnehmern auf
<http://www.languagecourse.net/schule-english-language-company-sydney.php3>

Unsere Sprachreise-Experten stehen Ihnen gerne zur Verfügung.

0800-999 88 84
info@languagecourse.de