



## PAMPLONA LEARNING SPANISH INSTITUTE



LanguageCourse.net

Worldwide most Visited  
Independent Site for  
Booking Language  
Courses

Book course at Pamplona Learning Spanish Institute, Pamplona for worldwide lowest price  
and Read reviews of Pamplona Learning Spanish Institute, Pamplona from former participants at  
<http://www.languagecourse.net/school-pamplona-learning-spanish-institute-pamplona.php3>

Our language travel experts will be happy to assist you.

UK: +44-709 200 15 64, US: +1-800 613 63 45, Int: +34-93 268 87 74  
[info@languagecourse.net](mailto:info@languagecourse.net)





**pamplona learning**  
SPANISH INSTITUTE S.L.



Dear friend,

Pamplona Learning Spanish Institute is a modern and attractive school where you can make your dream of learning Spanish come true.

Our school is located in Pamplona, famous worldwide for its San Fermin festivals. However, the doors of Pamplona, the capital of the Autonomous Region of Navarre, are open to students throughout the whole year, offering them an ample programme of cultural and leisure activities as well as a welcoming atmosphere.

Sharing your time with the people of Navarre is one of the best ways to learn Spanish and the spanish way of life.

At our school you will have at your disposal a team of people who will be more than willing to help you both in your efforts at learning Spanish and in making your stay in Pamplona as pleasant as possible.

Here at Pamplona Learning Spanish Intitute you will not only learn Spanish but you will also have the oportunity to discover the rich and varied gastronomy of Navarre, its majestic scenary, its traditions and customs... Come and see for yourself!



Noel Quinlivan  
Sales Manager



## Navarre: land of diversity

The Autonomous Region of Navarre is 10,421 sq. kms. It is in the North of Spain on the border with France. It is surrounded by the following regions of Spain, Aragon (to the East and to the South), La Rioja (to the South) and the Basque Country (to the North West).

Navarre has three very different geographic and bi-climatic areas: the mountainous area in the North, the area around Pamplona and finally the South of the Region. In the last century, the population of Navarre has nearly doubled. At the moment it is around 620.000 inhabitants.

The cultural offer is quite considerable and varied, due to the amount of activities offered by the Institutions both public and private. These include the Local Government, the Town Halls, Private Foundations and the Universities. This offer has been augmented in the last couple of years by infra-structures such as the Baluarte, which includes an Auditorium and a Conference Hall. As well as that, in the little village of Alzuza, located 4 kilometres from Pamplona, can be found the Museum of Jorge Oteiza, an internationally renowned sculptor.

The biological heritage of Navarre is very diverse, not only due to the geographical characteristics of the area but also to the development undergone by Navarre in the last few years, which has been able to harmonise economic development with respect for the environment.

The gastronomy of Navarre is both diverse and natural. Navarre can offer the world succulent steak, some excellent red-peppers, incomparable asparagus and some delicious cheese, all washed down by magnificent wines. Then, to finish off one can try the Navarrese liquor, Pacharán.



## Pamplona: slice of life



The city of Pamplona is located in the very centre of Navarre, and a large part of it is surrounded by the river Arga.

This city can boast of being built for living in. It has approximately 200.000 inhabitants and has over 4.000.000 square metres dedicated to parks and gardens, which make it one of Europe's greenest cities.

In spite of it being a relatively small city, it enjoys enormous prestige for the quality of both its universities and its health system. This has turned Pamplona into a venue for scientific, technical, business, health and cultural conferences.

Another aspect that helps to elevate the quality of life in Pamplona is its excellent public and private health service.

Pamplona can consider itself a privileged city due to the variety and quantity of cultural and leisure activities on offer, its streets full of buildings of artistic-historical interest, its rich and varied gastronomy, its world famous festival of San Fermin, its respect for the environment, and of course the friendliness of its people.





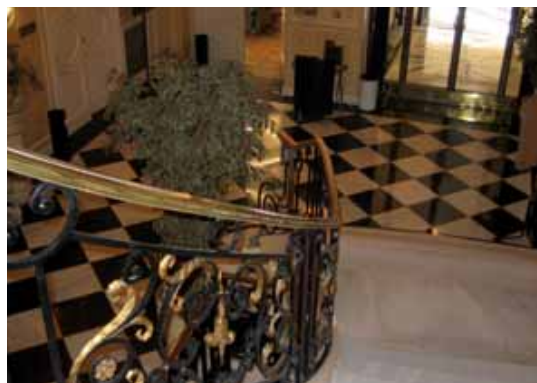
**pamplona learning**  
SPANISH INSTITUTE S.L.



## The Spanish Institute: prestige and experience

Pamplona Learning Spanish Institute owes its existence to Clen College, which has been in operation for over 19 years giving language training to people in Pamplona and the surrounding areas; the Government of Navarre, which is keenly interested in promoting Navarre as a destination for students of Spanish as a second language and finally Mr. Declan Millar, Managing Director of High Schools International, who is one of the most important people in the world of student travel.

Our school is located in the centre of the city, in a building of historical interest, where Pamplona Learning Spanish Institute has seven classrooms, a resource centre with a library, a film centre and a multimedia centre, an auditorium, a café and a restaurant. The whole building is wifi.



## The courses

### Standard course

General Spanish course of 20 lessons per week from 9:00 to 13:15, Monday to Friday.

### Intensive course

General Spanish course complemented with lessons on Spanish culture, literature and history; it consists of 25 lessons per week from 9:00 to 14:15, Monday to Friday.

### Superintensive course

Course of general Spanish complemented with lessons on Spanish culture, literature and history. It consists of 30 lessons per week from 9:00 to 15:15, Monday to Friday. For those who wish to progress at a higher speed in a group.

### Standard course +5 private lessons

General Spanish course of 20 lessons per week from 9:00 to 13:15 Monday to Friday in a group, plus 5 one-to-one lessons per week. These 5 one-to-one lessons are tailor-made for the student's needs, interests and gaps in the language.

### Intensive course +5 private lessons

General Spanish course complemented with lessons on Spanish culture, literature and history, 25 lessons per week from 9:00 to 14:15 Monday to Friday in a group, plus 5 one-to-one lessons per week. These 5 one-to-one lessons are tailor-made for the student's needs, interests and gaps in the language.

### Preparation course for the DELE (Diploma in Spanish as a Foreign Language)

The "Diplomas de Español como Lengua Extranjera (DELE)" are official qualifications issued by the Instituto Cervantes, on behalf of the Spanish Ministry for Education and Science.

There are six levels of DELE exams: A1, A2, B1, B2, C1, C2.

It consists of a four-week course or an eight-week course of 25 lessons per week, just before the official dates of the exams; from 9:00 to 14:15 Monday to Friday. Students have 2 daily lessons of general Spanish, plus 3 daily lessons dedicated to aspects specifically related to the exams.

### Additional information:

**The courses above mentioned will start on any Monday except for Preparation for DELE (consult dates) and for complete beginners whose courses will begin on the first and third Monday of each month.** Students will do a level test, a week before starting the course, and will be assigned to a suitable group and level according to the results of the test. On the last day they will receive a certificate of attendance.

The lessons last for 55 minutes and take place from Monday to Friday in the mornings; should the circumstances demand it **PLSI reserves the right to change the times of the courses and even to move the courses to the afternoon or evening.**

When lessons are not given due to it being a public holiday, those lessons will not be made up for. **If there are two holidays in the same week, lessons will be made up for one.**

**The groups will have a minimum of 3 students and a maximum number of 8 students. Students will receive a reduced number of lessons, if only 1 or 2 students enrol on the following courses: Standard course: 14 lessons; Intensive course: 18 lessons; Superintensive course: 21 lessons. Preparation for DELE: 20 lessons.**





## The courses

### Special courses

#### Spanish for groups

This course is designed specially for schools, universities, associations and companies. PLSI offers tailor-made courses at a special price for groups of people, who have similar interests and objectives and book together. We will work with the person in charge to develop the programme. It can be a program made up entirely of Spanish lessons or a combination of Spanish lessons and cultural and leisure activities. The duration of the programme is flexible and it can start all year long. Minimum age is 14 years. Lessons last for 55 minutes with a minimum of 2 lessons per day.

#### Spanish for 50+

The students have the chance to learn Spanish in an incomparable atmosphere. The course consists of 20 lessons of general Spanish, complemented by cultural and social activities for one week; lessons from Monday to Friday; from 9:00 to 13:15.

#### Specific language programmes for executives and business people

The courses are one-to-one and tailor-made. The students can choose between 20, 30 or 40 hours of lessons per week. The minimum stay is one week.

#### Spanish for Engineers

This course has been designed for those who, having an intermediate level (B1), wish to improve their Spanish in the fields related to Engineering. It consists of 100 lessons: 5 lessons per day during 4 weeks from Monday to Friday; from 9:00 to 14:15.

#### Spanish for the Medical Profession

This course has been designed for those who, having

an intermediate level (B1), wish to improve their Spanish in the fields related to Medicine and Health. It consists of 100 lessons: 5 lessons per day during 4 weeks from Monday to Friday; from 9:00 to 14:15. He/She can take the Madrid Chamber of Commerce Certificate exam on Medical Spanish in our school.

#### Spanish for Business

This course has been designed for those who, having an intermediate level (B1), wish to improve their Spanish in the fields related to the world of business. It consists of 100 lessons: 5 lessons per day during 4 weeks from Monday to Friday; from 9:00 to 14:15. He/She can take the Madrid Chamber of Commerce Certificate exam on Business in our school.

#### Spanish and San Fermín

This course consists of a Standard course of general Spanish and some specific activities related to the San Fermín festival (from July 6th to 14th ); it is designed for those who want to learn Spanish and enjoy this peerless celebration, which constitutes Pamplona's most renowned feature around the world.

#### Internship programmes

These programmes are a combination of a language course and non-paid or paid work in companies. The programme can last from 24 to 48 weeks and consists of at least, 4 weeks of General Spanish followed by an internship in a company. The internship options at the moment are in engineering, (automotive industry, aeronautical sector) administration, the chemical industry and marketing. In order to participate in this programme the student should have an intermediate level (B1) of Spanish.



# The levels

**Pamplona Learning offers courses from complete beginners** (with no knowledge of Spanish) **up to superior (C2).**  
**Students should have the following skills by the time they finish each level:**

## **Elementary - A1**

The students can express, both orally and in writing, basic opinions, feelings and needs related to their daily life.

## **Pre-Intermediate - A2**

The students can express, in a general manner, opinions, feelings and needs both orally and in writing; They can also communicate some information relating to day to day situations. They will be able to express themselves in past tense in a simple way. The students can read simple general information or literary texts.

## **Intermediate - B1**

The students can deal fluently with topics which are familiar or of personal interest. They can express themselves in writing, using long and complex expressions. They will have acquired a general knowledge of the socio-cultural reality of Spain through the reading of general information material.

## **Upper -Intermediate - B2**

The students can interact and express themselves with enough fluency and spontaneity.

## **Advanced - C1**

The students can recognise implicit meaning in written texts. They can express their own opinions on what is being discussed. They show a good knowledge of the language and they use it with flexibility and effectiveness.

## **Superior - C2**

The students can use the language very fluently. They should be able to argue convincingly and to use the specific vocabulary needed for each situation. They will be able to read literary texts from contemporary authors and to write using different styles.

<b>PAMPLONA LEARNING LEVELS</b>	<b>EUROPEAN EQUIVALENCE</b>
<b>Elementary</b>	<b>Basic User A1</b>
<b>Pre-Intermediate</b>	<b>Basic User A2</b>
<b>Intermediate</b>	<b>Independent User B1</b>
<b>Upper-Intermediate</b>	<b>Independent User B2</b>
<b>Advanced</b>	<b>Proficient User C1</b>
<b>Superior</b>	<b>Proficient User C2</b>





## The methodology

The sessions in Pamplona Learning are focused on the student and his/her learning and progress. This is why the students' origin, age, learning style, needs, etc, are taken into account when preparing the sessions. The language used in class is Spanish only. The sessions try to rouse both the students' involvement in the activities and the interaction between students.

In addition to our communicative and action-based approach, the courses follow the European Framework regarding the task based approach. Student related situations are brought up in class.

Special emphasis is put on the communicative aspects of the language, such as oral comprehension and expression.

The programmes of Pamplona Learning have been developed by highly qualified teachers and according to the guidelines set out by the Instituto Cervantes. The teachers at Pamplona Learning are university graduates and have specific training in the teaching of Spanish as a second language.



## Activities



Pamplona Learning Spanish Institute gives you the opportunity to discover and explore this diverse region.

The school provides the information you need, in order to get to know the best places and activities, from museums to parks, cinemas, theatre, guided tours, sports, night life and shopping areas.

### **Make the most of your stay in Pamplona**

**Enjoy nature** trails (strolling), climbing, potholing, canoeing, skiing in beautiful natural resorts such as: The natural Reserve of Irati, The Pyrenees or the desert Bardenas Reales. The environment gives you the chance to practice either winter or summer sports (golf, horse riding, going to the beach and so on).

**Get to know** the history of the region through the Pilgrim's Way to Santiago de Compostela at the cities of Pamplona, Estella or Puente la Reina.

**Discover** the medieval architecture at the Olite Castle or the deep rooted traditions of our culture, visiting the cities and villages of the region (San Fermin, Carnival, popular festivities).

**Savour** our internationally recognized gastronomy through the restaurants, bars and the traditional tapas. Social and night life assured.

**Visit** the wineries, cheese factories, and other craft industries of the region.

**Enjoy yourself** with the cultural activities such as: theatre, dancing, concerts, exhibitions and shows.

Pamplona Learning can offer its students a wide range of activities to engage in, once lessons are over or at weekends.

The activities will take place, provided there is a minimum number of students interested in that particular activity.





## Accomodation

When it comes to accommodation the students of Pamplona Learning Institute can choose between different options.

We believe that homestay in a Spanish family is one of the best ways to get to know the Spanish way of life, the culture and the traditions.

The stay can be:

- Full board during all week
- Half board from Monday to Friday, with full-board at the weekend

For those who prefer another type of accommodation, they have the opportunity of sharing a flat with other people, **who can be Spanish or foreign**. The student will have his/her own private room and will share the use of the kitchen, living-room and toilet. It is self-catering.

The first day of accommodation is the Sunday before the course starts and the last day is the Saturday immediately after the course ends.

In some cases and depending on availability, there will be residential accommodation on offer.

For those who wish, Pamplona Learning will be able to offer hotel accommodation in Pamplona.



## How to arrive: communications and transport



### By coach

The bus-station is located in the centre of Pamplona and has regular daily connections to Madrid, Barcelona, Bilbao, San Sebastian and a large number of other cities in Spain and in Navarre.

### By train

The train station is situated in San Jorge, a short distance from the city centre and has regular daily rail connections to Madrid, Barcelona, Zaragoza, San Sebastian, Vitoria, and many more cities in Spain. Those going to or coming from the South of Spain, have to change trains in Madrid.

For further information please consult:  
[www.renfe.es](http://www.renfe.es)

### By air

The airport is located in Noáin, about 7 kilometres from the centre of Pamplona and has regular daily flights to/from Madrid, Barcelona and other cities in Spain.

For further information please consult: [www.aena.es](http://www.aena.es)

### Additional information:

[www.turismonavarra.es](http://www.turismonavarra.es)





**pamplona learning**  
SPANISH INSTITUTE S.L.



## Learn Spanish in Pamplona Learning Spanish Institute!!

*I have enjoyed studying at the school and learning about the city. All of the staff have been very welcoming and friendly, they look after the students well. I feel that my Spanish has improved in one week.*

**Jessica, UK**

*During my stay in Pamplona I have not felt like I have been visiting, but rather that I have been at home. The staff, teachers and hosts have all been extremely welcoming and my personal interactions with them have taught me almost as much as I have learnt in class.*

**Caherine, USA**

*I was more than happy with everything the school had to offer. It was the best language course I've ever attended. I started at the end of September, having an A1 level and I reached the C1 level in less than 6 months, all of this due to the teachers and the personalised and tailored method they are using.*

*The classes were so much fun and the overall experience was one of the best I had in a school.*

*The school offered a wide range of extra curricular activities and I made great friends while being there ( teachers and students).*

*As about the location, it took us 5 min walking to reach the city's downtown and the old city centre ( that is great fun ).*

*I loved every single thing about this school and I recommend it to all those who want to learn Spanish having fun, in a nice environment...and very quickly. I got the DELE certificate after 6 months of studying there with no effort on my side ( never studied at home) just because it was so much fun going there.*

**Adina, Romania**



*The school is located on the top floor of an attractive building close to the centre of Pamplona. It has good facilities - library, computers, free internet access, a good restaurant and cafe. The staff was helpful and friendly and the teachers I had were all excellent and in the space of about 4 months went from not being able to communicate in Spanish (at all!) to being able to hold a conversation. I can now get by and make myself understood in everyday situations.*

*I would recommend the Learning Spanish Institute in Pamplona to anybody wishing to learn Spanish from scratch or to improve their Spanish.*

**Tudor, UK**

*Pamplona is beautiful, the weather is very good. People are nice.*  
**Franek, Poland**

*The school is very nice, good atmosphere, everybody was friendly. San Fermín was good fun to see.*

**Victoria, Ireland**

*I have had fun learning about the culture in Pamplona and the language. The teachers at PLSI are very nice and funny, they make us talk in Spanish; it really helps. I have had the best time learning Spanish. It is much better than all the classes I have had before.*

**Kelsey, USA**

## ...and many more reasons why you should come to Pamplona

Photographs courtesy of Tourism Archive "Reyno de Navarra"  
Larrion&Pimoulier: Tourists on the bridge, San Lorenzo Walk, Citadel and Baluarte, Cathedral Cloister and Sanfermines  
Tryon: General view of Pyrenees/ Luis Otermin: Bardenas and Baztan / Patxi Uriz: City Walls



Shortlisted  
Spanish Language School 2008



BILDUNGSURLAUB



## PAMPLONA LEARNING SPANISH INSTITUTE



**pamplona learning**  
SPANISH INSTITUTE S.L.



Avda. Baja Navarra nº 47 | 31002 Pamplona (España)  
Tel.: +34 948 383 579 | Fax: +34 948 203 042 |



LanguageCourse.net

Worldwide most Visited  
Independent Site for  
Booking Language  
Courses

Book course at Pamplona Learning Spanish Institute, Pamplona for worldwide lowest price  
and Read reviews of Pamplona Learning Spanish Institute, Pamplona from former participants at  
<http://www.languagecourse.net/school-pamplona-learning-spanish-institute-pamplona.php3>

Our language travel experts will be happy to assist you.

UK: +44-709 200 15 64, US: +1-800 613 63 45, Int: +34-93 268 87 74  
[info@languagecourse.net](mailto:info@languagecourse.net)