



TARONJA
spanish for foreigners



SPANISH TEACHER TRAINING COURSES

TO WHOM IT IS DIRECTED

This course is aimed for NON-NATIVE SPANISH TEACHERS and NATIVE SPANISH TEACHERS who work teaching Spanish and who want to refine the knowledge of their Spanish language and teaching skills.

COURSE DURATION

1 week consisting of 6 hours every day - 30 hours in total.

LEVEL

C1 / C2

STARTING DATES

16.07/ 06.08/ 08.10

Groups of 4 people or more, can request a different date for this course.

LEARNING THEORY / METHODOLOGY

Literacy Teaching
Language Acquisition
Skills
Approaches
TICS
Contrastive linguistics

DEBATE

Personal experience with 2nd languages
Literature/culture, E/LE clases

ACTIVITIES AND CLASSROOM ANALYSIS

TAILORED MATERIAL WORKSHOPS

Identify and select criteria for the elaboration of ELE materials
Reflect on the elaboration of distinct ELE didactic materials
Obtain a vision of the processes involved in the development of didactic teaching materials

CLASS OBSERVATION

Tailoring of staff observation
Team and individual reflection

COURSE PREPARATION

A month prior to the start date, trainees will receive detailed planning of the course, whereby all important information will be given. Ensuring the maximum level of satisfaction, Taronja School trainers are available to trainees during this month to answer any queries that you may well have. They will send information of your interest that deals with the teaching training course that you will undertake.

OBJECTIVES

1. Reflect on the new learning-teaching focuses in a foreign language
2. Bring together the teaching experiences of the trainers
3. Be familiar with and carry out an analysis of actual Spanish teaching realities
4. Advance and better the Spanish language skills of trainees
5. Share the same motivation in training as teachers of the Spanish language

METHODOLOGY

The course will focus principally on practice. Analysis, evaluation and commonality will govern all work units.

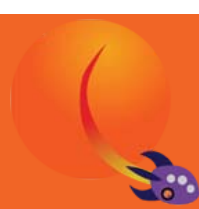
Thanks to our experience as teachers/teacher assistants, we aim to look for the key points within the ELE teaching - learning programme. We will incorporate various elements to make the classes as adequate and motivated as possible.



TARONJA
spanish for foreigners



TARONJA
spanish for foreigners



MONITORING

On the final day of the course, trainers and trainees will mutually carry out an evaluation of the course and participate in a questionnaire/survey where they will be asked to mark all aspects relating to their stay, from the degree of planning, to course outcomes, to the satisfaction of accommodation.

After completion of the course, teachers will provide a tutorial service by means of email whereby trainees can contact their tutors and continue the feedback process that passed during the course if they wish.

OUR TRAINERS

Our training team is highly qualified and experienced in teaching and ELE teacher training in the Taronja School establishment as well as other schools and universities.

An attractive point that differentiates our teaching training course from others is that our tutors have experience of actually creating and developing didactic materials and have been guest speakers at many important teacher training seminars and conferences.

TIMETABLE AND PROGRAM

HORA	LUNES	MARTES	MIÉRCOLES	JUEVES	VIERNES
09:00 A 10:40	Introducción: El Marco Contextualización metodológica: del método tradicional al enfoque por competencias. Las destrezas. La competencia comunicativa.	La enseñanza de la Gramática: de la sistematización a la reflexión sobre la Gramática.	La enseñanza de la Cultura. La competencia intercultural.	Visita a una clase. Completamos plantillas confeccionadas.	La utilización de la Literatura en el aula de E/LE.
10:40 A 11:00	PAUSA	PAUSA	PAUSA	PAUSA	PAUSA
11:00 A 12:40	La inclusión de las TIC en el proceso enseñanza-aprendizaje.	Herramientas on-line para la adquisición de una L2.	La comunicación no verbal: quinésica y proxémica.	Análisis de la clase observada. Preparación de materiales para una clase.	Análisis crítico de materiales.
12:40 A 13:30	PAUSA	PAUSA	PAUSA	PAUSA	PAUSA
13:30 A 15:10	La importancia del contexto en la elaboración de actividades. Taller de análisis y adaptación de actividades	Taller de elaboración de actividades gramaticales con apoyo de las TIC.	Taller de elaboración de actividades integradoras: lo lingüístico y lo no-lingüístico.	Puesta en práctica: estar al frente de una clase de ELE.	Evaluación del curso Despedida



TARONJA
spanish for foreigners



LanguageCourse.net

Worldwide most Visited
Independent Site for
Booking Language
Courses

Book course at Taronja, Valencia for worldwide lowest price
and Read reviews of Taronja, Valencia from former participants at
<http://www.languagecourse.net/school-taronja-valencia.php3>

Our language travel experts will be happy to assist you.
UK: +44-709 200 15 64, US: +1-800 613 63 45, Int: +34-93 268 87 74
info@languagecourse.net



LanguageCourse.se

Världens mest besökta
fristående Sida för att Boka
Språkresor

Boka din kurs på Taronja, Valencia för världens lägsta priser
och läs recensioner av Taronja, Valencia från tidigare deltagare på
<http://www.languagecourse.net/se-sprakkurser/skola-taronja-valencia.php3>

Våra experter på språkresor hjälper dig så gärna.

info@languagecourse.net