

TAMWOOD English Language Centres

VANCOUVER • TORONTO • WHISTLER



TAMWOOD
LANGUAGE. CULTURE. LIFE.
LANGUAGE CENTRES



Winner

English Language School - North America 2013



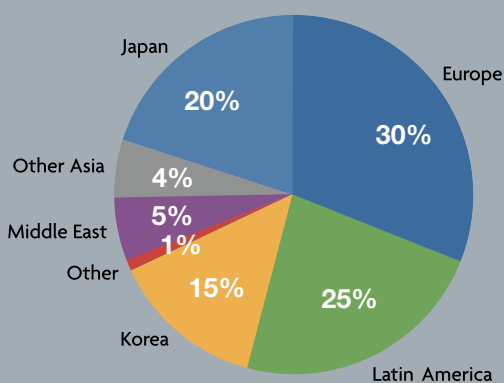
Eduardo Freire Photography



WELCOME

COUNTRY OF ORIGIN OF TAMWOOD'S STUDENTS:

- Argentina • Austria • Belgium • Brazil
- Canada • Chile • China • Colombia •
- Costa Rica • Czech Republic • Dominican
- Republic • Ecuador • France • Germany
- Guatemala • Hong Kong • Hungary
- Israel • Italy • Japan • Korea • Latvia
- Lithuania • Luxembourg • Mexico
- Netherlands • Peru • Puerto Rico •
- Russia • Saudi Arabia • Spain • Sweden
- Switzerland • Taiwan • Thailand •
- Turkey • U.S.A • Ukraine • United Arab
- Emirates • Venezuela • Vietnam • Other



Language. Culture. Life.

Here are just a few of the reasons students from all over the world choose Tamwood:

Personal Coaching: This FREE service is offered to all students. Our academic staff will have one-to-one meetings with you to help you identify your learning goals and develop the most efficient ways for you to achieve them.

Our Teachers: Tamwood teachers are all university graduates with training and certification to teach English. Tamwood students always say that one of the things they will miss most when they leave Tamwood is their teachers!

Nationality Mix: Due to its unique work programs, international credentials and strong reputation in the industry, Tamwood attracts students from more countries than other language schools in Canada.

Accreditations and Awards:

- One of only a few Canadian schools accepted for membership in the exclusive International Association of Language Centres (IALC)
- Accredited member of Languages Canada
- Official Recognized Organization with International Experience Canada, CIC
- Winner of the STM Star School in North America Award in 2013 and finalist in 2008-2012



Winner

English Language School - North America 2013



Winner

Junior Course for under 18s 2013



Shortlisted

Work Experience Provider 2013



CONTENTS

Our Campuses	4	Special Programs	
General English Programs		English For Lawyers	16
Vancouver & Toronto	6-7	One-to-One Teacher Homestay	16
Whistler	8-9	Family Program	16
Exam Preparation Programs		International Business English	17
IELTS	10	One-to-One Private Tuition	17
CAMBRIDGE FCE	10	English + Programs Whistler	
CAE	10	English + Learn to Ski/Snowboard	18
English Internship Program	11	English + Learn to Mountain Bike	18
English Co-op Program	12-13	English for Instructors Programs Whistler	
Academic Pathway Program	14	Canadian Ski/Snowboard Instructor	18
		Mountain Bike Instructor Levels 1 & 2	18
		Accommodations	19
		Activities	19

Tamwood English Levels and Program Options

Tamwood offers a wide range of programs which you can choose from for your study period, depending on your English level and goals. Students who test at Tamwood levels 1-4 will start in the General English Program but can progress to a focused language program once they reach level 5 or higher.

Each level has a 12 week curriculum and most students following the Full Time Program will take 12 weeks to progress to the next level. Students who take the Semi-intensive or Intensive Program can accelerate their learning and progress faster. Tests are given weekly.

If your English Level is:	LEVEL 1 ZERO BEGINNER	LEVEL 2 ELEMENTARY	LEVEL 3 PRE-INTERMEDIATE	LEVEL 4 INTERMEDIATE	LEVEL 5 HIGH INTERMEDIATE	LEVEL 6 LOW ADVANCED	LEVEL 7 HIGH ADVANCED
GENERAL ENGLISH	PRIVATE LESSONS	8 - 12 WEEKS	8 - 12 WEEKS	8 - 12 WEEKS	8 - 12 WEEKS	8 - 12 WEEKS	8 - 12 WEEKS
EXAM PREPARATION					IELTS or FCE	IELTS or CAE	IELTS or CAE
ACADEMIC PATHWAY PROGRAM					EAP 1	EAP 2	EAP 2
ENGLISH + WORK PROGRAMS				ENGLISH COOP PROGRAM (BASIC SERVICE) or ENGLISH VOLUNTEER PROGRAM	ENGLISH INTERNSHIP PROGRAM or ENGLISH COOP PROGRAM or ENGLISH VOLUNTEER PROGRAM	ENGLISH INTERNSHIP PROGRAM or ENGLISH COOP PROGRAM or ENGLISH VOLUNTEER PROGRAM	ENGLISH INTERNSHIP PROGRAM or ENGLISH COOP PROGRAM or ENGLISH VOLUNTEER PROGRAM
ENGLISH FOR PROFESSIONALS					INTERNATIONAL BUSINESS ENGLISH or ENGLISH FOR LAWYERS	INTERNATIONAL BUSINESS ENGLISH or ENGLISH FOR LAWYERS	INTERNATIONAL BUSINESS ENGLISH or ENGLISH FOR LAWYERS
ENGLISH PLUS PROGRAMS					CASI LEVEL 1 (Snowboard) or CSIA LEVEL 1 (Ski) or CMBI LEVEL 1 (Mountain Bike)	CASI LEVEL 1 (Snowboard) or CSIA LEVEL 1 (Ski) or CMBI LEVEL 1 (Mountain Bike)	CASI LEVEL 1 (Snowboard) or CSIA LEVEL 1 (Ski) or CMBI LEVEL 1 (Mountain Bike)

TEST SCORE EQUIVALENCIES (with Tamwood Levels)

IELTS		2+	3+	4+	5+	6+	7+
TOEFL iBT		19 - 29	30 - 51	52 - 64	65 - 78	79 - 95	95 - 120
CAMBRIDGE			KET PET (Pass)	PET (Merit)	FCE (C+)	FCE (A) CAE	CPE
CLB STAGE*	1	2 - 3	4 - 5	6 - 7	8 - 9	10 - 11	12
CEFR		A1	A2	B1	B2	C1	C2

*Canadian Language Benchmark (Citizenship and Immigration Canada) *The above chart shows the required exit level for each level.

OUR CAMPUSES

Vancouver: City Life

- Consistently recognized as one of the world's most livable cities.
- Leading in the areas of sustainability, accessibility and inclusivity.
- Vancouver is a mix of different ethnicities, religions and cultural groups from all over the world.



Whistler: Outdoor Adventure

- Host Mountain Resort of the 2010 Winter Olympics.
- Only 40 kms inland from the Pacific Ocean, and 120 kms from Vancouver.
- The highest lift-serviced vertical and the largest terrain of any ski area in North America.
- 200+ ski/snowboard runs, 38 lifts and 8 parks and pipes.
- World's largest Downhill Mountain Bike Park.



Vancouver Campus

- Centrally located in downtown Vancouver.
- One block from the famous Robson Street shopping area and close to many other attractions and Vancouver's main entertainment district.
- Student lounge and in-school restaurant.
- 15 student computers and free wireless.
- Average student age: 24
- Average student population: 200

Whistler Campus

- Amazing Location: in the main Village Square of Whistler, only 300 steps from the gondolas.
- Large bright classrooms and student lounge.
- FREE sports equipment storage for students on site.
- 10 student computers and free wireless.
- Average student age: 22
- Average student population: 50



BRITISH COLUMBIA & ONTARIO



Computer lab at Vancouver Campus



Toronto Campus Student Lounge

Toronto: City Life

- Canada's largest city, with a population of more than 4 million.
- This city is known for its safety, multicultural population and culture.
- Exciting night-life, great shopping and lots of wonderful cultural events and festivals.
- Home to professional sports teams such as baseball, basketball, hockey and soccer.
- 24-hour public transportation system including the subway, buses and streetcars.

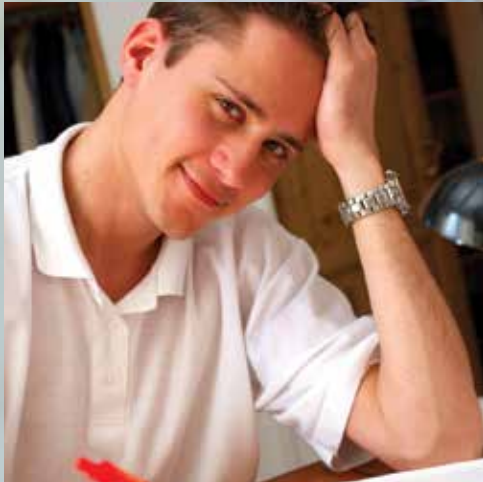


Tamwood Toronto Campus

Toronto Campus

- Located in a high-rise building at Yonge Street and Eglinton Avenue, in central Toronto - mid-town.
- Subway stop conveniently located in school building.
- Student lounge and in-school restaurant.
- 17 student computers and free wireless.
- Average student age: 24
- Average student population: 100

VANCOUVER & TORONTO



GENERAL ENGLISH

1. Choose your program

EACH LESSON
= 50 MINUTES

FULL TIME PROGRAM 20 Lessons per week

MORNING ACADEMIC TIMETABLE*		AFTERNOON ACADEMIC TIMETABLE*	
TIME	CLASS	TIME	CLASS
9:00 - 12:00	Essential English Skills	14:00 - 14:50	Elective
13:00 - 13:50	Elective Class	15:00 - 18:00	Essential English Skills

SEMI INTENSIVE PROGRAM 25 Lessons per week

MORNING ACADEMIC TIMETABLE*		AFTERNOON ACADEMIC TIMETABLE*	
TIME	CLASS	TIME	CLASS
9:00 - 12:00	Essential English Skills	12:00 - 12:50	Elective Class
13:00 - 13:50	Elective Class	14:00 - 14:50	Elective
14:00 - 14:50	Elective Class	15:00 - 18:00	Essential English Skills

*Students in the full time and semi intensive programs will be assigned to either the morning or afternoon academic timetable depending on their registration date and their English level. Students can apply to switch timetables if they wish and switches will be made when space becomes available.

INTENSIVE PROGRAM 30 Lessons per week

TIME	CLASS
9:00 - 12:00	Essential English Skills
13:00 - 13:50	Elective Class
14:00 - 14:50	Elective Class
15:00 - 15:50	English for Real Life!

2. Choose your classes

Essential English Skills: You will learn and practice all the skills you need to understand and communicate in English — Listening, Speaking, Reading, Writing, Pronunciation, as well as Vocabulary, Idioms, and Grammar. In addition, you will learn the common phrases and expressions that native speakers use. By integrating all these skills, you will achieve all-round English competence so that you can both understand and communicate more naturally. Offered at levels 2 - 7.

English for Real Life! Who doesn't need more practice? In this class you will put into practice the skills learned in morning classes. Interactive activities include conversation, discussion, debate, and role play. You will read about, listen to, research and write about issues of personal, local, social, and global interest. You will use authentic media: radio and TV, newspapers and magazines, telephone, email, and internet. These classes are fun and very popular. The focus is on fluency and functional communication skills.

3. Choose your electives

THE FOLLOWING ELECTIVES ARE OFFERED FOR STUDENTS IN THE ELECTIVE PERIODS:

CLASS	AVAILABLE FOR
C,P & V*	Levels 3 - 7
Listening & Speaking	Levels 3 - 7
Reading & Writing	Levels 3 - 7
Business English	Levels 4 - 7

* Conversation, Pronunciation & Vocabulary



TAMWOOD PERSONAL COACHING PROJECT

Students who stay longer than 4 weeks have the option to take this FREE service. A teacher will work with you to focus on your goals and develop the most efficient way for you to achieve them through practice and exercises to be done outside of class.

KEY FACTS

ENGLISH REQUIREMENT: Tamwood Level 2 or higher

DURATION: Minimum 2 Weeks

CLASS SIZE: Average 12, Maximum 15

AGE: Minimum 17, No Upper Limit

START DATES: Every Week

EVALUATIONS: Weekly

CERTIFICATE: Awarded upon successful completion of studies

WHISTLER



Eduardo Freire Photography





GENERAL ENGLISH

Program Options and Timetables

SUMMER - MAY TO NOVEMBER

STANDARD PROGRAM 15 Lessons/Week		
TIME	DAYS	CLASS
8:30 - 11:45	Mon-Friday	Essential English Skills

FULL TIME PROGRAM 20 Lessons/Week		
TIME	DAYS	CLASS
8:30 - 11:45	Mon-Friday	Essential English Skills
12:15 - 1:30	Mon-Thurs	Listening and Speaking Class

SEMI INTENSIVE PROGRAM 25 Lessons/Week		
TIME	DAYS	CLASS
8:30 - 11:45	Mon-Friday	Essential English Skills
12:15 - 1:30	Mon-Thurs	Listening and Speaking Class
1:45 - 3:00	Mon-Thurs	Workshop

WINTER - DECEMBER TO APRIL

STANDARD PROGRAM 15 Lessons/Week		
TIME	DAYS	CLASS
8:30 - 11:45	Mon-Friday	Essential English Skills

FULL TIME PROGRAM 20 Lessons/Week		
TIME	DAYS	CLASS
8:30 - 11:45	Mon-Friday	Essential English Skills
11:45 - 16:00	Mon-Friday	Free Time to Ski/Ride
16:00 - 17:15	Mon-Thurs	Workshop

* Level 2 students who want to take a Full-time Program in Winter or Semi-Intensive in Summer can take One-to-One instead of the Listening and Speaking Class and the Workshop Class for an additional fee.

Essential English Skills: You will learn and practice all the skills you need to understand and communicate in English — Listening, Speaking, Reading, Writing, Pronunciation, as well as Vocabulary, Idioms, and Grammar. In addition, you will learn the common phrases and expressions that native speakers use. By integrating all these skills, you will achieve all-round English competence so that you can both understand and communicate more naturally. Open to students in levels 2 - 6.

Listening and Speaking Class: Focus of this class is on oral communication skills. Students get lots of practice and instruction in speaking and listening to English. Students taking this class improve their vocabulary pronunciation, accent and comprehension quickly. Open to students in Tamwood levels 3 - 6.

Workshop: Who doesn't need more practice? Put into practice the skills you learned in morning classes. Interactive activities include conversation, discussion, debate, and role play. These classes are fun and very popular. The focus is on fluency and functional communication skills. Open to students in Tamwood Levels 3 - 6.



Eduardo Freire Photography

KEY FACTS

DURATION: Minimum 1 Week

CLASS SIZE: Average 12, Maximum 15

AGE: Minimum 17, No Upper Limit

START DATES: Every Week

LESSON = 60 minutes

EVALUATIONS: Weekly

CERTIFICATE: Awarded upon successful completion of studies

FREE PERSONAL COACHING: Academic, Goal Oriented

MINIMUM ENGLISH - Level 2 for Essential Skills, Level 3 for other classes

EXAM PREPARATION PROGRAMS

IELTS and Cambridge FCE and CAE

Description:

Students who test at Tamwood's level 5 can choose to take the IELTS or FCE preparation program and students who test at level 6 or higher can choose to take the IELTS or CAE preparation program.

Intensity:

25 lessons per week

Location:

IELTS and CAE offered in Vancouver and Toronto only.
FCE offered in all three campuses.

Duration:

4, 8 or 12 weeks for IELTS and 8, 10 or 12 weeks for FCE and CAE. Students taking IELTS who test at level 5 should take the complete 12 week program.



Features:

- Courses are all taught by teachers specialized in teaching test preparation programs.
- All classes focus on test preparation and a lot of time is spent on test strategies with weekly in-class practice tests & monthly mock exams.
- Programs focus on identifying weaknesses in the students skills and building those skills.
- All four skills are covered (S,L,R,W) as well as Vocabulary, Pronunciation & Structure.
- Start Dates: Every Monday for IELTS. Fixed start dates and exam dates for FCE and CAE, please refer to Tamwood price list.



CAMBRIDGE PREPARATION PROGRAM

Focuses on 5 main skills covered in the examination:

Reading

Writing

Use of English (Grammar)

Listening

Speaking

Weekly Practice Tests

Full mock exam at end of session

Official examinations are held on the final week of the program on dates set by Cambridge University

Exam results and certificates provided by the University of Cambridge

Over 80% passing rate

Tamwood prepares students for the FCE and CAE Cambridge exams.

DAILY TIMETABLE

TIME	CLASS
9:00 - 12:00	Exam Prep Lessons
12:00 - 13:00	Lunch
13:00 - 13:50	Exam Prep Lessons
14:00 - 14:50	Exam Prep Lessons

ENGLISH INTERNSHIP PROGRAM

Unpaid Professional Placements

This innovative English program combines English classes with an unpaid internship practicum in a Canadian company matched to your career interests to allow you to develop the technical vocabulary and English skills you need to be successful in English in your field.

English Class Component

You will study for the same amount of time as you work. You can choose General English or one of Tamwood's special English programs for your study term(s). While studying, you will also take the Job Skills Seminar to prepare you for your English learning practicum.

Work Practicum Component

Tamwood will arrange your internship placement. Placements will be made based on your stated preference, the time of year, and your education, relevant experience, language level and program duration.



KEY FACTS

PROGRAM START DATE	Anytime
ENGLISH LEVEL REQUIRED	High Intermediate - Advanced
AGE REQUIREMENT	Minimum 20
PROGRAM LENGTH	24-52 weeks
VISA TYPE	Study and Work Permits (C30 Exemption)
INTERNSHIP FIELDS	Professional internship positions in specific career fields: <ul style="list-style-type: none">• Marketing• Office Administration• Law• Media / Communications• Environment / Conservation• Graphic Design / Web Development• Information Technology• Hospitality / Tourism• Community Services
SALARY	Unpaid
WORK LOCATIONS	Vancouver, Toronto and, for hospitality placements, resorts across Canada
ACCOMMODATION	Optional: Homestay, Hostel, Hotel, Apartment rental
DEADLINE TO APPLY	12-16 weeks prior to start date



ENGLISH CO-OP PROGRAM

English Class Component

Learn English through a combination of English classes and a fun Paid Job in the Canadian Tourism, Hospitality or Leisure industry. Learning English has never been so effective, so easy and so much fun!

Work Practicum Component

Placement Options:

There are two ways you can get your work placement:

- **Full Service Placement:** We arrange your work placement with one of our carefully selected host companies.

WORK DATES: Jobs are seasonal positions so your work practicum dates must coincide with either the summer season or the winter season:

Summer Season: May/June to August/September

Winter Season: Nov/Dec to March/April

WORK LOCATIONS: Placements are made in tourist resort locations across Canada, not in the big cities. Most resort employers provide low cost staff housing and great perks for their staff! In some situations, a placement will be made prior to your arrival. We do all the work and you are guaranteed a placement.

- **Basic Service:** We teach you job finding skills and then you lead your work placement search, allowing you to select your host employer. We screen the job offers to ensure a proper fit for your program.

WORK DATES: Work placements can be found in all months but in some months it is easier than in other months to find work. In Toronto and Vancouver, the best months (in green) to find work are:

JAN	FEB	MAR	APR	MAY	JUN	JUL	AUG	SEP	OCT	NOV	DEC
-----	-----	-----	-----	-----	-----	-----	-----	-----	-----	-----	-----

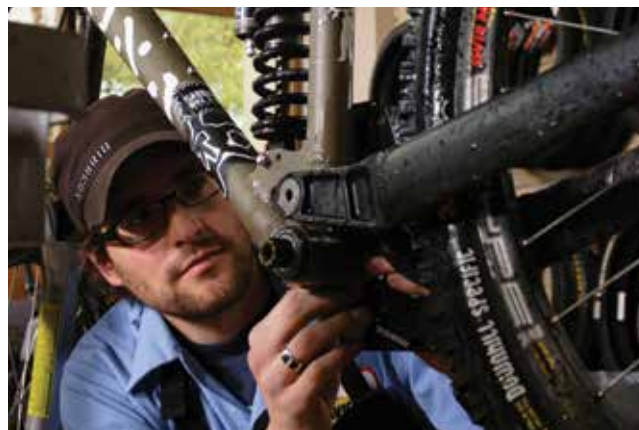
In Whistler, the best months to find work are: October and November for the winter season and June for the summer season.

WORK LOCATIONS: Students taking the Basic Service option can find work in Toronto, Vancouver, Whistler, Banff, Jasper, Lake Louise, BC Interior, Vancouver Island, Victoria, rural areas and Ontario.

Jobs Available:

Paid work placements are available in hotels, restaurants, cafés, tourist attractions, tour operators, summer camps and ski resorts. In these positions you will have the chance to use and improve your English skills through communication with co-workers and clients. Jobs available include:

- food service
- food preparation
- hotel concierge
- hotel room attendant
- ticket seller
- ski lift attendant
- guest services
- camp counselor
- retail sales attendant
- tour guide



PAID WORK

Program Structure

Depending on your preferred start date, program duration and study and work locations, you can choose or will be assigned to one of the following program options:

CLASSIC STRUCTURE

STUDY TERM - Minimum 4 Months - FULL TIME English

WORK TERM - Minimum 4 Months - FULL TIME Work Practicum

DESCRIPTION: You complete all of your required English study before your work placement commences.

WORK PLACEMENT OPTIONS: Full Service and Basic Service.

DURATION: 6-24 months.

NOTE: For programs of 6 - 9 months duration, please contact Tamwood for specific start dates and availability.

SANDWICH STRUCTURE

STUDY TERM
Minimum 4 Weeks
FULL TIME English

WORK TERM - Minimum 4 Months
FULL TIME Work Practicum

STUDY TERM
Minimum 4 Weeks
FULL TIME English

DESCRIPTION: You complete at least 4 weeks of full time study before starting your work practicum. You complete the balance of your required study hours after completing your work placement.

WORK PLACEMENT OPTIONS: Full Service and Basic Service.

DURATION: 6-24 months.

NOTE: For programs of 6- 9 months duration, please contact Tamwood for specific start dates and availability.

INTEGRATED STRUCTURE

STUDY TERM
2 - 4 Weeks
FULL TIME English

WORK and STUDY TERM - Minimum 4 Months
MORNINGS: English Classes AFTERNOONS: Work

DESCRIPTION: You study a minimum of 4 weeks and while studying secure your part-time work practicum. You then switch to a combined program in which you study 20 lessons a week and work 20 hours per week.

WORK PLACEMENT OPTIONS: Basic Service only.

DURATION: 5 - 24 months.

NOTES RE STUDY AND WORK PROGRAMS:

1. The English Coop Program and the English Internship Program offered at Tamwood are designed to enhance your language skills. Although some of the skills acquired will be work-place related, the program is not intended to be career-focused but an opportunity to specialize your language acquisition to the environment.
2. Work placement opportunities improve based on your achieved English level, your attitude and enthusiasm, your education and experience and your program duration. The longer the program duration, the greater the options.



KEY FACTS

MINIMUM AGE: 19

DURATION: 5-24 months (depends on program structure, see above)

MINIMUM ENGLISH LEVEL: Intermediate

WAGE: \$8-12/hour

VISA: Study Permit + Work Permit (C30 exemption)

ACADEMIC PATHWAY PROGRAM

Academic Pathway Program

Study in the Tamwood Academic Pathway Program and secure conditional admission into one of our partner universities or colleges, or use this program to improve your IELTS score and academic English skills for admission to other post secondary institutions.

This program prepares students for North American post-secondary education and teaches advanced oral and written English skills. Students learn academic research and presentation skills, to write extended university essays, strategies for teamwork in group projects, critical thinking, time management, study and note taking skills, exam techniques, and IELTS preparation and practice.

Tamwood's Academic Pathway Program consists of 2 levels:

ENGLISH FOR ACADEMIC PURPOSES LEVEL 1 (EAP 1)

12 weeks - 25 lessons/week - successful graduates can achieve an IELTS score of 6.0 or higher and can progress to EAP 2 or directly into specific university/college programs.

ENGLISH FOR ACADEMIC PURPOSES LEVEL 2 (EAP 2)

12 weeks - 25 lessons/week - successful graduates should achieve an IELTS 6.5 or higher and transfer into a university or college program.

EAP 1 / EAP 2 Course Timetable

	Monday	Tuesday	Wednesday	Thursday	Friday
9:00am-12:00pm	EAP Integrated Skills Typical wrap up of unit/ assessment	EAP Integrated Skills: Typical start of new unit	EAP Integrated Skills	Connections component	EAP Integrated Skills
12:00pm-1:00pm	Lunch break	Lunch break	Lunch break	Lunch break	Lunch break
1:00pm-3:30pm	EAP Integrated Skills	EAP Integrated Skills	EAP Integrated Skills	Connections: Field work, research, group projects, etc.	No classes

Requirements

- Students take a placement test when applying to determine their English level
- Students who test at Level 5 (High Intermediate) begin in the EAP 1 course (12 weeks)
- Students who test at Level 6 or 7 (Advanced) can take the EAP 2 course (12 weeks)
- Beginner and Intermediate students start in General English classes and after testing at level 5, students can begin the EAP 1 course



Take our online test

This test will help you determine your English level and length of study.

ACADEMIC PATHWAY PROGRAM

Pathway Program Advising

Our Program Advisors will guide each student toward entrance to college or university. Each student will meet with an Advisor throughout their Pathway program to determine progress and plan for university or college admissions.

Advisors will:

- Guide students through every step of the university and college admissions and application processes
- Offer assistance with agency referrals for study visa applications
- Provide the opportunity for Pathway students to learn about international student services offered at our partner campuses and to attend presentations, workshops and tours
- Follow up with students and our institutional partners after acceptance to ensure long term success and to continually refine and enhance our curriculum



Tamwood has two types of agreements with University and College partners:

- University/College accepts Tamwood's EAP 1 or EAP 2 graduates (NO IELTS or TOEFL requirement) AND issues Conditional Acceptance Letters for Tamwood students.
- University/College issues Conditional Acceptance letters before EAP 1/EAP 2 students have the required TOEFL or IELTS. This gives Tamwood students the advantage of knowing they have a space reserved in their chosen program. Students must submit IELTS or TOEFL score to gain admission to their chosen academic program.

*Agreements vary depending on the partner school. Please contact a Tamwood representative for details on the partner school. Please contact a Tamwood representative for details.



SPECIAL PROGRAMS

English for Lawyers

ENTRY REQUIREMENTS: Tamwood Levels 5 - 7

MINIMUM AGE: 21

DURATION: 2 weeks, 25 lessons /week

LOCATION: Vancouver

EDUCATION: Minimum 3 years university legal studies

CLASS SIZE: Maximum 8 for legal classes, Minimum 3

FEATURES: Combines seminars on legal skills with legal vocabulary and general English classes. Instructors are English Canadian lawyers. Students learn through practical legal writing skills classes and assignments, role plays, discussions about legal concepts and guided visits to places of interest such as the law courts, law firms and arbitration centres.

NOTES:

The English for Lawyers program offered at Tamwood is designed to enhance your language skills for use in your career or further studies. Although some of the skills acquired will be work-place related, the program(s) is not intended to be career focused but an opportunity to specialize your language acquisition to the environment.



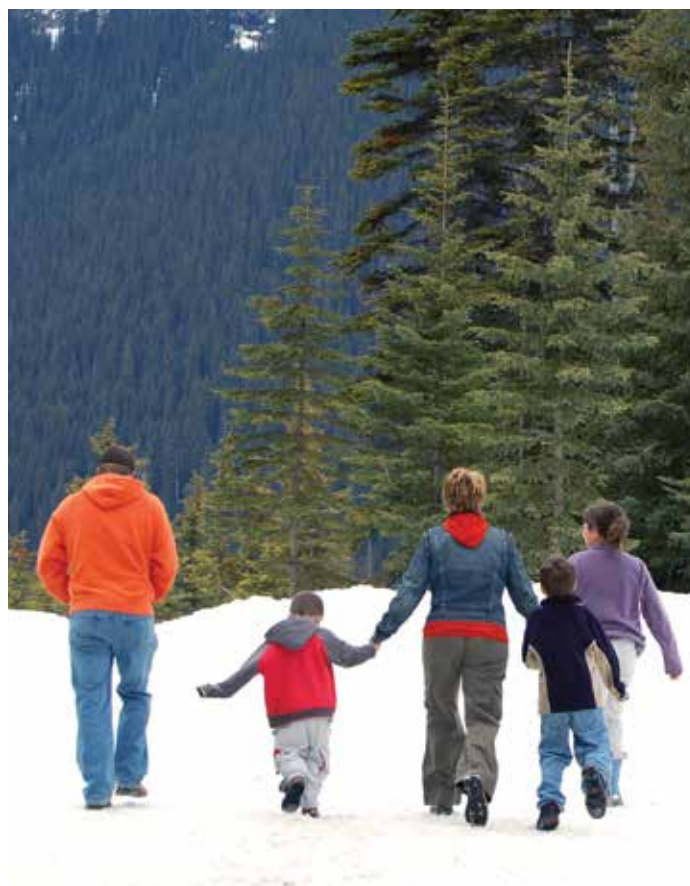
Teacher Homestay

MINIMUM AGE: 11

DURATION: Minimum 1 week, 15, 20, 25 hours per week

LOCATION: Toronto, Vancouver and Whistler

FEATURES: Live with your teacher and study with your teacher in the home. Class schedule and content arranged by agreement between student and teacher. Excellent for students who have limited time and want to learn quickly.



Family Program

MINIMUM AGE: Children must be 12 in the winter and 7 in the summer. Parents and older children must be at least 17 to study at the adult campus.

DURATION: In January - 2, 3 or 4 weeks. In July and August - 1 to 6 weeks.

FEATURES: The parents attend adult English classes while their children take part in either the Winter Teen Camp offered in Toronto and Vancouver in January, or the Tamwood English Summer Camp offered in Whistler in July and August. Families can live together in an apartment hotel, with a host family or in self arranged accommodation.

Contact us for more details and customized family quote.

OFFERED IN: Toronto, Vancouver and Whistler

SPECIAL PROGRAMS

International Business English

ENTRY REQUIREMENTS: For business students, graduates, managers and executives. Students should be at Tamwood's English Level 5, 6 or 7

MINIMUM AGE: 18

DURATION: 4, 8 or 12 weeks, 25 lessons per week

LOCATION: Vancouver

CLASS SIZE: Maximum 15

FEATURES: Learn the English skills you need to communicate effectively in today's global market place.

METHODOLOGY INCLUDES: exercises, case studies, role plays and research. Visits to businesses may be arranged during the course.

TOPICS COVERED IN THE ENGLISH FOR BUSINESS CLASSES INCLUDE:

- Management, Communication, Employee Relations and Negotiation
- Corporate Structures
- Risk and Crisis Management
- Finance, Accounting and Company Performance
- Change, Cooperation, Mergers and Acquisitions

DAILY TIMETABLE

TIME	CLASS
9:00 - 12:00	General English Skills
12:00 - 13:00	Lunch
13:00 - 13:50	English for Business Communication 1
14:00 - 14:50	English for Business Communication 2

NOTES:

The International Business English program offered at Tamwood is designed to enhance your language skills for use in your career or further studies. Although some of the skills acquired will be work-place related, the program(s) is not intended to be career focused but an opportunity to improve your ability to conduct business in English in an international environment.



Private Tuition

DURATION: Minimum 5 hours

FEATURES: One-to-one private English lessons with a Tamwood instructor designed to meet the specific needs of the student. Accelerate your learning by combining afternoon/weekend private lessons with morning group lessons. Private or semi-private lessons can focus on specific vocabulary, skills or interests. This is especially popular with executives, professionals and those with specific English learning goals.

OFFERED IN: Toronto, Vancouver and Whistler



ENGLISH+PROGRAMS WHISTLER

English + Learn to Ski/Snowboard - Winter

If you want to learn to Ski or Snowboard for the first time or to improve your skills in either sport, this program option is for you. You can combine morning English lessons at Tamwood with daily (M-F) afternoon ski/snowboard lessons given by the Whistler Blackcomb Ski/Snowboard School. Their professional instructors teach at all levels from beginner to advanced so you will be placed into a small group at your level. You will quickly learn new skills and make friends to ski/ride with while you see more of the mountains each day. Weekly packages available. Contact Tamwood for information on how to book your lessons and lift passes.



English + Learn to Mountain Bike - Summer

Why not learn more than English this summer? In this program you will take English classes in the morning and join experienced instructors for a guided lesson in the Whistler Mountain's Bike Park in the afternoon. There are a variety of routes to match your ability and excitement level. You will receive a great mix of tour and clinic elements depending on the desires of you and your group. Patient, professional instructors will progressively introduce you to braking skills, cornering, and riding graduated drops and jumps. Weekly packages available. Contact Tamwood for information on how to book your lessons and lift passes.

INSTRUCTOR PROGRAMS

English for Canadian Ski/Snowboard Instructor Certification

CSIA Level 1 Course: Prepare your English to take the CSIA Level 1 exam in Whistler and become a certified ski instructor. This program combines 10 days of English instruction (mornings only) with special afternoon (and evening) seminars focused on language skills for teaching and is designed to prepare you for the Canadian Ski Instructor Association Level 1 exam which is a four-day exam taken at the end of the course. With this certification you can teach anywhere in Canada and in many countries around the world.

CASI Level 1 Course: Prepare your English to take the CASI Level 1 exam in Whistler and become a certified snowboard instructor. Snowboarding is the fastest growing winter sport. New instructors are in high demand and especially those that speak more than one language. In this program you will study English for 10 days (mornings only) and spend your afternoons (and some evenings) on the mountain or in the classroom as you get special instruction to prepare you for the Canadian Association of Snowboard Instructor Level 1 three-day exam which is taken at the end of the course. This Certification is internationally recognized and is required if you want to work as a snowboard instructor anywhere in Canada.

English for Mountain Bike Instructor Certification

This English course prepares your English to take the Mountain Bike Instructor or Guide courses offered by Whistler Blackcomb. Whistler is home to the world's largest Mountain Bike Park. Learn from the best as you take the Level 1 or 2 Mountain Bike Instructor Development Program. This certification is recognized by resorts across Canada.

Program includes:

- Full Time English Course (20 lessons/week) for 2 weeks.
- 5 seminars teaching technical English skills needed to be a mountain biking instructor.
- 3-day (Level 1) or 4-day (Level 2) on-mountain Instructor Course and Exam offered by Whistler Mountain.

ACCOMMODATIONS

Homestay and Other Options

Tamwood has an experienced and caring homestay coordinator who carefully screens and selects hosts for our students. Hosts provide a warm and caring environment where students can practice their English and experience Canadian traditions and culture.

Homestay: Single or shared room with shared bathroom facilities • Full or Half Board • Shared Laundry, TV and Telephone, etc.

Executive Homestay: Single Room with private bath • Full or Half Board • Maximum 4 international students living in the home, all speaking different native languages.

Dormitory Homestay: Single or Shared room with shared bathroom facilities in a large home hosting 5 or more international students • Full or Half Board • Shared Laundry, TV and telephone, etc.

Tamwood Whistler Dormitory: Large house with shared rooms • Shared bathroom, laundry, TV, telephone and common area • Self-Catering.

Hotels, Hostels, B&B's and Lodges: Student residence and other accommodation options are available in all three locations. Students should book at least 2 months in advance. Contact Tamwood for more information on these options.



ACTIVITIES

There is so much more than just English classes at Tamwood. Every week, Tamwood's activity coordinator organizes a variety of afternoon and evening social activities giving students the chance to meet other students, get to know Vancouver, Whistler or Toronto, experience the area's amazing outdoor activities and have fun!

ACTIVITIES: Social Activities • Night Club & Pub Nights • Holiday Theme Parties • Cultural Excursions • Beach Volleyball • Snow Tubing • Sea Kayaking • Soccer • Aquarium at Stanley Park • Capilano Suspension Bridge • Walking Tours of the City • Victoria Island Tours • Whistler Trip • Seattle Trip • Ski/Snowboard Trips • Weekly Graduation Party • Weekend Excursions • Cultural Activities • Snowboarding • Skiing • Ice Skating • Snow Tubing • Dog Sledding • Ice Climbing • Indoor Rock Climbing • Snowmobiling • Bungee Jumping • Zip Trek • Horse Drawn Sledding • Nordic Skiing • Ski Jumping • Swimming • Tennis • Fitness Training • Beach Volleyball • Paintball • Mountain Biking • Canoeing/Kayaking • Football • Soccer • Baseball • Hiking • Rock Climbing • Skateboarding • Glacier Skiing • Rafting • Horse Riding • Fishing • Wake Boarding • Rollerblading • Golf • Kite Boarding & Windsurfing • PLEASE NOTE: Not all activities are offered in all locations



Volunteer to Learn More English

Combine your English classes with a volunteer position. Tamwood offers FREE advice and assistance to students wanting to get involved in the local community as a volunteer. The options are endless and you might help at a fundraising event, work at a festival, work at the animal shelter or get involved in an environmental conservation project. Volunteering is a great way to practice your English in the "Real World", meet Canadians and do something good for others.



TAMWOOD
LANGUAGE. CULTURE. LIFE.
LANGUAGE CENTRES



Shortlisted

Work Experience Provider 2013



Winner

English Language School - North America 2013



Winner

Junior Course for under 18s 2013

Tamwood International is a privately owned British Columbia limited company.
Tamwood International is a member of:

Tamwood was founded in 1992 and received its first students in July 1993.

