



» South Africa

# Cape Town

Bayswater Cape Town is in the popular Green Market Square in the city centre. Inside, our modern facilities offer an outstanding learning experience, and from our rooftop terrace you'll have a spectacular view of the city. Social butterfly? We have an extensive programme of attractions, activities and events just for you.

**12**  
Classrooms

**170**  
Capacity

Education  
South Africa

**14**  
Average  
class size



▲ 40 Shortmarket Street, 1st Floor,  
Leadership House Building

## At a glance

- Modern facilities in the heart of the city
- Home to Table Mountain, the most iconic South African landmark
- Fantastic cultural opportunities

## Language

Lessons per week

General English	20/25/30
IELTS Preparation	5+
Cambridge Preparation	25/30
Private Tuition	5+

## Accommodation Options

- Homestay
- Residence

## Key facts

- » Accredited by Education South Africa
- » 12 classrooms
- » Air conditioning
- » Learning centre
- » Kitchen
- » Student lounge

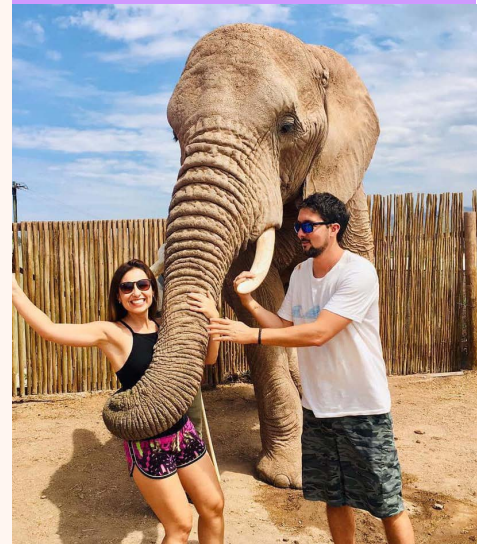
## Age Mix

18-24	40%
25-30	25%
30+	35%

## Student Nationality

LATAM	50%
Middle East	20%
Europe	10%
Asia	5%
Other	15%

## Discover cultural opportunities



Find out more at [bayswater.ac/cape-town](https://bayswater.ac/cape-town)

**LanguageCourse.net** Book at worldwide lowest price at:  
<https://www.languagecourse.net/school-bayswater-cape-town.php3>

🇺🇸 +1 646 503 18 10

🇬🇧 +44 330 124 03 17

🇪🇸 +34 93 220 38 75

🇫🇷 +33 1-78416974

🇨🇭 +41 225 180 700

🇩🇪 +49 221 162 56897

🇮🇹 +43 720116182

🇧🇷 +31 858880253

🇳🇱 +7 4995000466

🇩🇪 +46 844 68 36 76

🇩🇪 +47 219 30 570

🇩🇪 +45 898 83 996

🇮🇹 +39 02-94751194

🇩🇪 +48 223 988 072

🇨🇳 +81 345 895 399

🇩🇪 +55 213 958 08 76

🇨🇳 +86 19816218990

# About the city

Cape Town is perfect for students looking to add safaris, sunbathing and mountain hiking to their timetable. This can be done year-round thanks to South Africa's mild climate, although the winter can get wet!

## City Sights

Boulder's Beach

Cape Point

Kirstenbosch National Botanic Gardens

Robben Island

Table Mountain

## Activities

Sports Activities

Club Nights

Open-Top Bus Ride

Theatre Visits

Restaurant Dinners

## Excursions

Explore everything South Africa has to offer with excursions to other famous places nearby.

Whale Watching

Seal Island

Wine Tasting

Safari

## Transport Information

Closest Airports: Cape Town International Airport

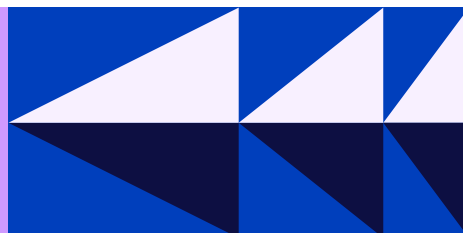
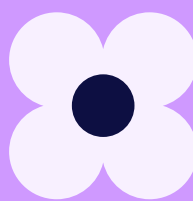
Closest Train Station: Strand Street Station

There is a direct bus link between Cape Town Airport and the city

## Useful Links

Tourism [www.tourismcapetown.co.za](http://www.tourismcapetown.co.za)

Transport [www.tct.gov.za/en/transport](http://www.tct.gov.za/en/transport)  
[www.myciti.org.za](http://www.myciti.org.za)



## Cost of Living

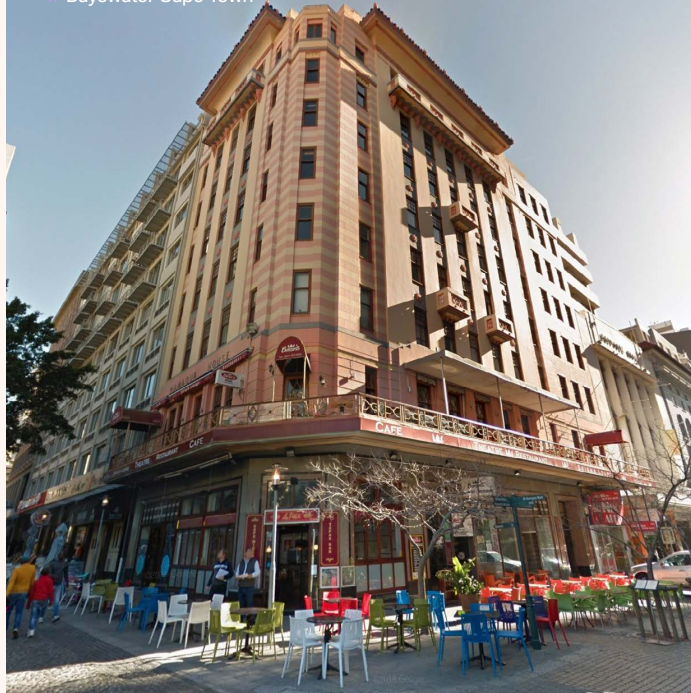
approx

Bus ride:	€1.20
Clubbing:	€10
Soft drink:	€1
Coffee:	€2
Dinner:	€10
Fast Food:	€4
Movie:	€10
Estimated pocket money/week	€180

# 4,618,000

Population

» Bayswater Cape Town

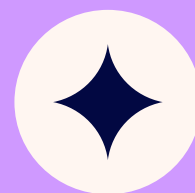


[bayswater.ac](http://bayswater.ac)

E-mail us  
[bookings@bayswater.ac](mailto:bookings@bayswater.ac)

Call us  
+27 71 888 4828

Visit us  
40 Shortmarket Street, 1st Floor, Leadership House Building



Book at worldwide lowest price at:  
<https://www.languagecourse.net/school-bayswater-cape-town.php3>

+1 646 503 18 10

+44 330 124 03 17

+34 93 220 38 75

+33 1-78416974

+41 225 180 700

+49 221 162 56897

+43 720116182

+31 858880253

+7 4995000466

+61 844 68 36 76

+55 213 958 08 76

+81 345 895 399

+91 225 180 700

+86 19816218990

+27 71 888 4828

+64 9 488 83 996

+1 646 503 18 10

+1 646 503 18 10

+1 646 503 18 10