

# BLI Program Schedule

**18** LESSONS PART-TIME (M Q O)  
Mon - Fri 9:00 - 12:00  
General ESL | FSL

**18** LESSONS PART-TIME (PM) (M)  
Mon - Thurs 14:05 - 17:50  
Specialized Elective ESL | FSL  
Power Skills ESL | FSL  
General ESL | FSL

**24** LESSONS FULL-TIME (M Q O)  
Mon - Thurs 9:00 - 14:05  
Fri 9:00 - 12:00  
General ESL | FSL  
Communication Workshop

**24** LESSONS FULL-TIME (PM) (M)  
Mon - Thurs 12:50 - 17:50  
Communication Workshop  
Specialized Elective ESL | FSL  
Power Skills ESL | FSL  
General ESL | FSL

**30** LESSONS INTENSIVE (M Q O)  
Mon - Thurs 9:00 - 15:20  
Fri 9:00 - 12:00  
General ESL | FSL  
Communication Workshop  
Specialized Elective ESL | FSL

**06** LESSONS EVENING STANDARD (M)  
Mon - Thurs 16:35 - 17:50  
General ESL | FSL

**35** LESSONS SUPER INTENSIVE (M Q O)  
Mon - Thurs 9:00 - 16:35  
Fri 9:00 - 12:00  
General ESL | FSL  
Communication Workshop  
Specialized Elective ESL | FSL  
Power Skills ESL | FSL

**09** LESSONS EVENING INTENSIVE (M)  
Mon, Wed, Thurs  
18:30 - 21:00  
General ESL | FSL

**42** LESSONS BILINGUAL (M Q O)  
Mon - Thurs 9:00 - 17:50  
Fri 9:00 - 12:00  
General FSL  
Communication Workshop  
Specialized Elective ESL | FSL  
Power Skills ESL | FSL  
General ESL

**09** LESSONS EVENING B (Q)  
Mon, Wed, Thurs  
18:00 - 20:30  
General ESL | FSL

...

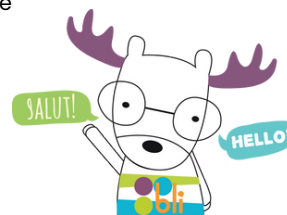
BLI English and French courses focus on developing the four main language skills: speaking, reading, listening, and writing with the correct use of grammar structures, vocabulary, and phonetics.

Using the Communicative Approach, the advantage for students at BLI is that upon completion of their program, they will be better equipped to communicate in a spontaneous and natural way, and they will be better at expressing their thoughts and ideas.

Test preparation is available for IELTS, TOEFL, CELPIP, DELF, and TEFAQ. For course dates, please contact us.

1 lesson is equal to 50 minutes.  
Lunch break is from 12:00 - 12:50

In some courses, students at multiple language levels are combined. This enables them to draw on each other's strengths and skills and advance through peer mentoring.



**LanguageCourse.net** Book at worldwide lowest price at:  
<https://www.languagecourse.net/school-bouchereau-lingua-international-montreal.php3>

+1 646 503 18 10  
+31 858880253

+44 330 124 03 17  
+7 4995000466

+34 93 220 38 75  
+46 844 68 36 76  
+81 345 895 399

+33 1-78416974  
+47 219 30 570  
+55 213 958 08 76

+41 225 180 700  
+45 898 83 996  
+86 19816218990

+49 221 162 56897  
+39 02-94751194

+43 720116182  
+48 223 988 072