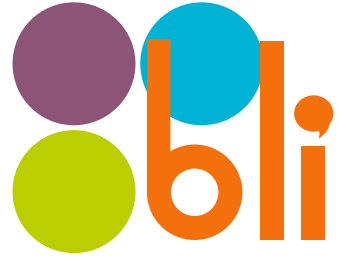


Live learning
love learning



Price List 2023





PROGRAM	AVAILABLE IN	MINIMUM AGE	COMMISSION RATE
GENERAL ESL COURSE	Montreal	16	As per agreement
GENERAL FSL COURSE	Montreal & Quebec	16	As per agreement
EXAM PREPARATION IELTS & TOEFL	Montreal	16	As per agreement
EXAM PREPARATION TEFAQ, TEF AND DELF	Montreal & Quebec	16	As per agreement
EXECUTIVE BUSINESS ENGLISH PROGRAMS	Montreal	18	20%
EXECUTIVE BUSINESS FRENCH PROGRAM	Montreal & Quebec	18	20%
ONLINE ESL FSL PROGRAMS	Online	16	20%
PATHWAY PROGRAMS	Montreal & Quebec	18	As per agreement
SUMMER & WINTER VACATION PACKAGE	Montreal	17	20%
FLAP TEEN CAMP SPRING, SUMMER & WINTER	Montreal & Quebec	12-17	20%
FLAP KIDS CAMP SUMMER	Montreal	6-11	20%
CANADIAN ELEMENTARY & HIGH SCHOOL - EXPERIENCE	Montreal	6	\$250
CANADIAN ELEMENTARY & HIGH SCHOOL - YEAR	Montreal	6	\$2000
CANADIAN ELEMENTARY & HIGH SCHOOL - SEMESTER	Montreal	6	\$1000
HIGH SCHOOL BRIDGE PROGRAM	Montreal	13	As per agreement
ONLINE CANADIAN HIGH SCHOOL	Online	14	\$300 credit
ACADEMIC ENGLISH SUPPORT PROGRAM	Online	14	As per agreement
ONLINE ESL FSL PROGRAMS JUNIORS AND KIDS	Online	7	As per agreement
CODING PROGRAMS	Online & Montreal	7	As per agreement



2023

OFFICIAL START DATES AND HOLIDAYS

01 | January Janvier

S	M	T	W	T	F	S
	1	2	3	4	5	6
7	8	9	10	11	12	13
14	15	16	17	18	19	20
21	22	23	24	25	26	27
28	29	30	31			

02 | February Février

S	M	T	W	T	F	S
				1	2	3
4	5	6	7	8	9	10
11	12	13	14	15	16	17
18	19	20	21	22	23	24
25	26	27	28			

03 | March Mars

S	M	T	W	T	F	S
				1	2	3
4	5	6	7	8	9	10
11	12	13	14	15	16	17
18	19	20	21	22	23	24
25	26	27	28	29	30	31

04 | April Avril

S	M	T	W	T	F	S
						1
2	3	4	5	6	7	8
9	10	11	12	13	14	15
16	17	18	19	20	21	22
23	24	25	26	27	28	29
30						

05 | May Mai

S	M	T	W	T	F	S
			1	2	3	4
5	6	7	8	9	10	11
12	13	14	15	16	17	18
19	20	21	22	23	24	25
26	27	28	29	30	31	

06 | June Juin

S	M	T	W	T	F	S
				1	2	3
4	5	6	7	8	9	10
11	12	13	14	15	16	17
18	19	20	21	22	23	24
25	26	27	28	29	30	

07 | July Julliet

S	M	T	W	T	F	S
						1
2	3	4	5	6	7	8
9	10	11	12	13	14	15
16	17	18	19	20	21	22
23	24	25	26	27	28	29
30	31					

08 | August Août

S	M	T	W	T	F	S
						1
2	3	4	5	6	7	8
9	10	11	12	13	14	15
16	17	18	19	20	21	22
23	24	25	26	27	28	29
30	31					

09 | September Septembre

S	M	T	W	T	F	S
						1
2	3	4	5	6	7	8
9	10	11	12	13	14	15
16	17	18	19	20	21	22
23	24	25	26	27	28	29
30						

10 | October Octobre

S	M	T	W	T	F	S
						1
2	3	4	5	6	7	8
9	10	11	12	13	14	15
16	17	18	19	20	21	22
23	24	25	26	27	28	29
30	31					

11 | November Novembre

S	M	T	W	T	F	S
						1
2	3	4	5	6	7	8
9	10	11	12	13	14	15
16	17	18	19	20	21	22
23	24	25	26	27	28	29
30						

12 | December Décembre

S	M	T	W	T	F	S
						1
2	3	4	5	6	7	8
9	10	11	12	13	14	15
16	17	18	19	20	21	22
23	24	25	26	27	28	29
30	31					



First day of session

Holiday or Official School closure

OFFICIAL HOLIDAYS



January 1st



June 24th



October 9th



April 7th



July 1st



December 25th



May 22nd



September 4th



December 26th



Live learning
love learning

www.bli.ca

BLI Schedule

18

LESSONS

PART TIME

Mon-Fri
9:00 – 12:00
General ESL | FSL

PART TIME A (PM)

Mon-Thu 12:50 – 16:35
Communication Workshop,
Specialized Elective ESL | FSL, Power
Skills ESL | FSL

PART TIME B (PM)

Mon-Thu 14:05 – 17:50
Specialized Elective ESL | FSL , Power
Skills ESL | FSL,
General ESL

24

LESSONS

FULL TIME

Mon-Thu 9:00 – 14:05
Fri 9:00 – 12:00
General ESL | FSL
Communication Workshop

30

LESSONS

INTENSIVE

Mon-Thu 9:00 – 15:20
Fri 9:00 – 12:00
General ESL | FSL
Communication Workshop
Specialized Elective ESL | FSL

35

LESSONS

SUPER INTENSIVE

Mon-Thu 9:00 – 16:35
Fri 9:00 – 12:00
General ESL | FSL
Communication Workshop
Specialized Elective ESL | FSL
Power Skills ESL | FSL

42

LESSONS

BILINGUAL

Mon-Thu 9:00 – 17:50
Fri 9:00 – 12:00
General FSL
Communication Workshop
Specialized Elective ESL | FSL
Power Skills ESL | FSL
General ESL



...

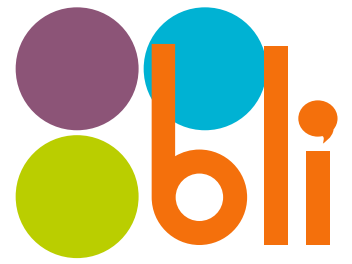
BLI English and French courses focus on developing the four main language skills: speaking, reading, listening and writing with the correct use of grammar structures, vocabulary and phonetics.

Using the Communicative Approach, the advantage for students at BLI is that upon their completion of their program, they will be better equipped to

communicate in a spontaneous and natural way and will be better able to express their thoughts and ideas. We have regular communication with students and teachers and always take student feedback into account to improve our programs for their benefit. * Test preparation is available for IELTS, TOEFL, CELPIP, DELF and TEFAQ. For course dates, please contact us.

** 1 lesson is equal to 50 minutes. Lunch break is from 12:00 – 12:50

In some courses, students at multiple language levels are combined. This enables them to draw on each other's strengths and skills and advance through peer mentoring.



Adult Programs

PROGRAM INCLUDES

- Orientation session
- Placement test
- Welcome package
- Student ID
- Certificate of attendance
- Free WI-FI & Internet access
- Weekly extra-help

General ESL - FSL Courses

16 YEARS OLD +

PROGRAM FEES

	PART TIME	FULL TIME	INTENSIVE	SUPER INTENSIVE	BILINGUAL	PART TIME PM
1 to 3 weeks	\$285	\$370	\$450	\$405	\$560	\$265
4 to 11 weeks	\$280	\$365	\$445	\$495	\$555	\$260
12 to 23 weeks	\$270	\$355	\$435	\$485	\$550	\$250
24 to 31 weeks	\$265	\$350	\$425	\$475	\$545	\$240
32 weeks +	\$255	\$345	\$415	\$465	\$540	\$230

PRIVATE TUTORING

IF ADDED TO GROUP CLASSES

LESSONS PER WEEK	PART TIME	FULL TIME	INTENSIVE	SUPER INTENSIVE
1	\$65	\$65	\$60	\$60
5	\$320	\$320	\$285	\$285
10	\$640	\$640	\$575	\$575

WITHOUT GROUP COURSES
5 TO 30 LESSONS PER WEEK

	ONE PERSON	*TWO PERSONS OR MORE
GENERAL ESL FSL	\$80	\$55
SPECIALTY ESL FSL	\$90	\$65

*PRICE PER PERSON AND PER LESSON

OTHER FEES

(MANDATORY)

Registration Low season	\$165
Registration High season	\$220
Materials 1-3	\$25
Materials 4-11	\$45
Materials 12-23	\$65
Materials 24-31	\$90
Materials 32+	\$110
Books per level	\$30

Book fees will be charged upon arrival based on SS level.
The availability of programs is subject to student enrollment. Registration fee based on study start dates.
High season: June 17 – August 210 2023

We strongly recommend students to start a course on the first Monday of session, but students can start on any Monday (except total beginners). If Monday is a public holiday, the course will start on Tuesday.



Accommodation and Other Services



HOMESTAY



	MONTREAL				QUEBEC	
	LOW SEASON		HIGH SEASON		ALL SEASONS	
	+18	-18	+18	-18	+18	-18
FULL BOARD	\$285	\$300	\$310	\$325	\$320	\$345
HALF BOARD	\$265	\$285	\$295	\$310	\$315	\$330
BED & BREAKFAST	\$245	\$260	\$265	\$280	\$285	\$320
ROOM STAY	\$220	NA	\$265	NA	\$270	NA
SPECIAL DIET	\$65 week					
EXTRA NIGHT	\$50 day					

STUDENT RESIDENCE



	SINGLE ROOM +18 MONTH	SHARED ROOM +18 MONTH
Montreal	\$1650	\$1100
Extra night	\$55	\$40

- High season: June 17 – August 20 2023
- *Please confirm availability before booking



* A \$75 CLEANING FEE WILL BE APPLIED.
** ADDITIONALLY, A NON-REFUNDABLE \$200 WILL BE CHARGED FOR LINEN, IF NEEDED.

OTHER FEES

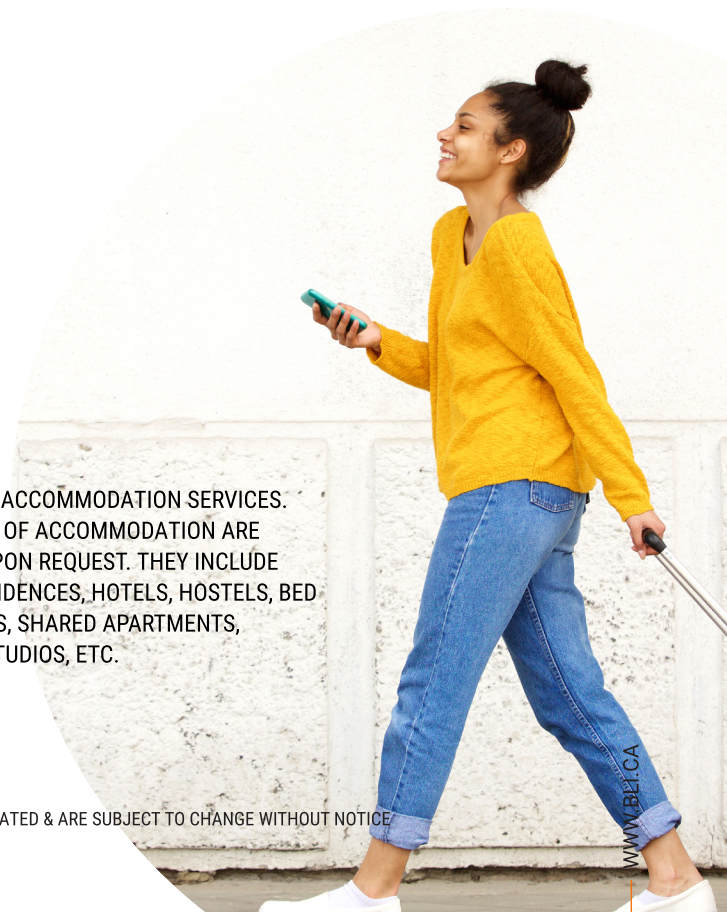
Accommodation placement fee	\$255
Accommodation change fee	\$165
Airport Pick-up	\$140
Airport pick-up and drop-off	\$220
Medical insurance	\$95 m
Custodianship letter -18	\$135
Custodianship Service -18	\$110 m

ALTERNATIVE ACCOMMODATION SERVICES.
OTHER TYPES OF ACCOMMODATION ARE AVAILABLE UPON REQUEST. THEY INCLUDE STUDENT RESIDENCES, HOTELS, HOSTELS, BED & BREAKFASTS, SHARED APARTMENTS, FURNISHED STUDIOS, ETC.



PLEASE CONTACT US
FOR FURTHER INFORMATION

ALL PRICES IN CAD · PRICES ARE PER WEEK UNLESS OTHERWISE INDICATED & ARE SUBJECT TO CHANGE WITHOUT NOTICE





Exam Preparation Program

PROGRAM INCLUDES

- Exam preparation is available for IELTS, TOEFL, CAE, DELF, TEF and TEFAQ.
- Full time program (24 lessons | week)
- BLI Montreal is an IELTS testing venue not a center
- BLI Quebec is an official TEFAQ test center.

 PLEASE CONTACT US FOR THE START DATES.

PROGRAM FEES

WEEKS	IELTS	TOEFL	CELP	CAE	DELF	TEFAQ
4	\$1455	\$1455	\$1455	N A	\$1455	\$1455
8	\$2815	\$2815	\$2815	\$2815	\$2815	\$2815
12	\$4225	\$4225	\$4095	\$4225	\$4225	\$4225

Book fees will be charged upon arrival based on selected program and length. Exam fees are not included in the price.

OTHER FEES

(MANDATORY)

Registration	\$165
Materials 4 Weeks	\$25
Materials 8 Weeks	\$45
Materials 12 Weeks	\$65
Books	\$55 and more

 PLEASE CONTACT US FOR START DATES.

Executive Business Programs

PRICE LIST 2022 | REG419112021

EXECUTIVE ENGLISH · FRENCH BOOT CAMP PROGRAM INCLUDES

- Registration fee
- Preliminary interview and placement test to assess learner's level and needs
- Customized learning portfolio
- 60 lessons of one-on-one instruction
- Lunch time spent with a teacher
- Airport transfer (pick up & drop off)
- Accommodation placement fee
- Hotel accommodation for 7 nights
- Certificate
- Course materials

LENGTH	PROGRAM FEE
1 Week	\$6875
2 Weeks	\$10780

FULL-TIME ONE-ON-ONE BUSINESS ENGLISH · FRENCH COURSE · 24 LESSONS PER WEEK

LENGTH	PROGRAM FEE
1 Week	\$1650
2 Weeks	\$3190
3 Weeks	\$4730
4 Weeks	\$6270

FULL-TIME MINI GROUP (MAX. 4 PEOPLE PER GROUP) BUSINESS ENGLISH · FRENCH COURSE · 24 LESSONS PER WEEK

LENGTH	PROGRAM FEE
1 Week	\$1210 per person
2 Weeks	\$2310 per person
3 Weeks	\$3520 per person
4 Weeks	\$4730 per person

ALL PRICES IN CAD · PRICES ARE PER WEEK UNLESS OTHERWISE INDICATED & ARE SUBJECT TO CHANGE WITHOUT NOTICE





Online Programs

Online Programs

PRICE LIST 2023 | REG419112021

PROGRAMS INCLUDE

- Placement test
- Certificate
- Access to BLI online platform
- Access to E-book

FEES

(MANDATORY)

Registration \$110

General ESL and FSL

PROGRAM	LENGTH	LESSONS PER WEEK	SCHEDULE		PRICE
Online Full Time	Flexible	24	Mon-Thu 9:00 - 14:05	Fri 9:00 - 12:00	\$210 CAD week
Online Part Time	4 weeks	18	Mon - Fri 9:00 - 12:00		\$165 CAD week
Online Evening	4 weeks	9	Mon, Wed & Thu	6:30 - 9:00 P.M	\$360 CAD 4 weeks

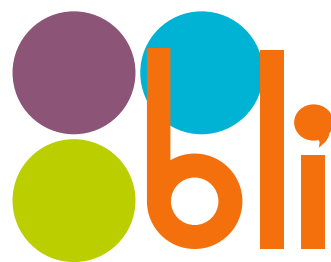
Specialty ESL

PROGRAM	LENGTH	LESSONS PER WEEK	SCHEDULE		PRICE
IELTS Prep	4 weeks	24	Mon-Thu 9:00 - 14:05	Fri 9:00 - 12:00	\$210 CAD week
Canadian English	Flexible	24	Mon-Thu 9:00 - 14:05	Fri 9:00 - 12:00	\$210 CAD week

Specialty FSL courses

PROGRAM	LENGTH	LESSONS PER WEEK	SCHEDULE		PRICE
TEFAQ Prep	4 weeks	24	Mon-Thu 9:00 - 14:05	Fri 9:00 - 12:00	\$210 CAD week
TEF Prep	4 weeks	24	Mon-Thu	6:30 - 9:00 P.M	\$755 CAD 4 weeks

be **blilingual**



**Pathway
Programs**

Pathway Programs

The Pathway program allows students to successfully pass the language proficiency (English or French) required by post-secondary schools in Canada.

BLI has multiple agreements, so you can select from a wide range of professional programs. You will benefit to start the registration process for these post-secondary courses with the support of the BLI team.

ONLINE EVENING + ONSITE FULL TIME

OPTION 1

Schedule online :
Mon, Wed & Thu 18:30-21:00

Schedule onsite :
Mon to Thu and 9:00-14:05, Fri 9:00-12:00

Registration fee	\$165 CAD
48 weeks online evening course	\$4290 CAD
8 weeks onsite full-time course	\$2155 CAD
Total	\$6610 CAD

ONLINE FULL TIME + ONSITE PART TIME

OPTION 2

Schedule online:
Mon to Thu and 9:00-14:05, Fri 9:00-12:00

Schedule onsite:
Mon to Fri 9:00-12:00

Registration fee	\$165 CAD
24 weeks online full time course	\$3960 CAD
8 weeks onsite part-time course	\$2155 CAD
Total	\$6280 CAD

OPTION 3

ONLINE PART TIME + ONSITE FULL TIME

Schedule online:
Mon to Fri 9:00-12:00

Schedule onsite:
Mon to Thu and 9:00- 14:05, Fri 9:00-12:00

Registration fee	\$165 CAD
24 weeks online part time	\$3435 CAD
8 weeks onsite full-time	\$2815 CAD
Total	\$6415 CAD

OTHER FEES

(MANDATORY)

Materials 4 Weeks	\$25 CAD
Materials 8 Weeks	\$45 CAD
Books	\$55 CAD level
Concierge services**	\$2200 CAD



** Optional Service

BLI can assist parents on registering their children from 5-17 years in regular public school.



PATHWAY PARTNERS

- Lester B. Pearson
- Herzing College
- Milestone College
- Collège Supérieur de Montréal
- University of Prince Edward Island
- Institut Teccart
- Academie of Learning
- Cégep de la Gaspésie et des îles
- Aviron Québec
- Ascent College
- Cégep Marie-Victorin
- Trebas
- M College
- Cumberland College
- Kensley College

OTHER AGREEMENTS

- Commission Scolaire de Montréal
- Commission Scolaire Marguerite Bourgeoise
- Institut Grasset
- English Montreal School Board
- Commission Scolaire de la Pointe-de-l'Île
- Manhattan Institute
- CDI

PROGRAM FEES & START DATES

Each professional program, has different fees, please refer to Pathway list to see the specific price and start dates of the program of interest.

A woman with dark hair and glasses, wearing a blue denim shirt, is sitting at a desk in a modern office. She is looking at a computer monitor. In the background, other people are working at desks, and the office has large windows and modern lighting.

Your future in
Canada
starts **here**



Junior Programs

Canadian Elementary & High School Experience Program

PROGRAM INCLUDES

- School fees
- Custodianship letter
- Airport transfer (pick up & drop off)
- Accommodation placement fee
- Shared homestay accommodation
- Homestay with 3 meals per day
- Medical insurance
- Monthly academic-report
- Certificate of participation
- Local transportation pass for high school students
- School materials and books
- Eligibility certificate
- Access to all school sport programs · extra fees may apply

PROGRAM DOES NOT INCLUDE

- Uniforms
- CAQ fee and visa fee & process
- Custodian service fee (\$100 per month)

WEEKS	GRADES	PROGRAM FEE
4	Grades 1 to 11	\$5170
8	Grades 1 to 11	\$9405
12	Grades 1 to 11	\$13585

AVAILABLE SCHOOLS

- Centennial High
- Heritage High
- Saint Lambert High
- St John's High

* Other schools available upon request



CONTACT US FOR ALTERNATE START DATES OR FOR OTHER PROGRAM LENGTHS.



GROUP PROGRAMS CAN BE CUSTOMIZED UPON REQUEST. CONTACT US FOR FURTHER INFORMATION.

ALL PRICES IN CAD · PRICES ARE PER WEEK UNLESS OTHERWISE INDICATED & ARE SUBJECT TO CHANGE WITHOUT NOTICE

Canadian Elementary & High School

SEMESTER & YEAR

PROGRAM INCLUDES

- Orientation session – Introduction to the Canadian Education System
- School fees
- Materials
- Medical insurance
- Airport transfer (pick up & drop off)
- Custodianship letter
- Eligibility certificate
- Accommodation placement fee
- Single homestay accommodation
- 3 meals per day (provided by host family)

PROGRAM DOES NOT INCLUDE

- Uniforms
- CAQ fee and visa fee & process
- Custodian service fee (\$100 per month)

SCHOOL BOARDS	REGISTRATION FEE	SCHOOL ONLY	SCHOOL & ACCOMMODATION
EMSB Year	\$1210	\$21010	\$34595
Lester B Pearson Year	\$1815	\$21010	\$34595
Riverside Year	\$1815	\$21010	\$34595
Riverside Semester	\$1815	\$13020	\$20570

AVAILABLE SCHOOLS



EMSB*

- Sinclair Laird
- Marymount Academy
- Westmount High
- Rosemount
- Royal Vale

RIVERSIDE*

- Centennial High
- Heritage High
- Saint Lambert High
- St John's High

* Other schools available upon request

START DATES ACADEMIC YEAR | PLEASE CONTACT US.

Note: If the student does not meet the minimum English requirement (BLI Intermediate 3), he | she will be required to take our Intensive English program prior to the start day of his | her high school program at an additional fee. Please refer to General ESL, FSL program fee structure. Deadline to register a full year: February 24, 2023; Deadline to register a full semester: February 24, 2023 (Fall semester) | September 15 2023 (Winter semester)

High School Bridge Program

PROGRAM FEES

- Registration fee \$275
- Placement test \$55

LENGTH	START DATES	TUITION FEE
1 semester	Flexible Start Dates	\$6600
1 year	Flexible Start Dates	\$13200

Online Canadian High School



CREDIT OPTIONS

PROGRAM FEES

- Registration fee \$275
- Administration fees \$220

BLI HIGH SCHOOL	CREDITS	FEE
Individual Credits	Less than 7 credits	\$1650
Full grade	7 credits	\$8470

Academic English Support Program



TAKEN WITH online
CANADIAN HIGH SCHOOL

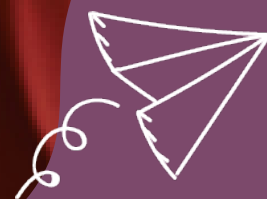
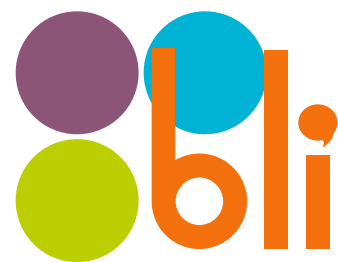
PROGRAM FEES

- Registration fee \$275
- Placement test \$220

PROGRAM	LENGTH	SCHEDULE	FEE
ACADEMIC ENGLISH SUPPORT PROGRAM	8 WEEKS	Mon-Fri 9:00 - 12:00	\$1760

FLEXIBLE START DATES

Note: If the student does not meet the minimum English requirement (BLI Intermediate 3), he | she will be required to take our Intensive English program prior to the start day of his | her high school program at an additional fee. Please refer to General ESL, FSL program fee structure.



Vacation Programs

FLAP - Teen Camp

SUMMER , SPRING & WINTER

12-17 YEARS OLD

PROGRAM INCLUDES

- Registration fee
- English | French course (24 lessons | week)
- Materials
- Accommodation placement fee
- Shared accommodation
- 3 meals per day (Special dietary needs and extra portions are subject to additional fees)
- Everyday activities
- Full-day outings OR full weekend outings (depending on program length and start date)
- Transit pass
- Medical insurance
- Airport pick-up & drop-off
- Supervision
- Custodianship letter
- Unaccompanied Minor traveling alone service. BLI staff escorts minor students to the airport to ensure a safe departure.



PROGRAM DOES NOT INCLUDE:

- Personal expenses (extra snacks, souvenirs, etc.)
- Airplane ticket
- Security deposit \$250 in cash (Residence only).

SPRING PROGRAM: April 09 th - April 22

SUMMER PROGRAM: June 25 - August 19

WINTER PROGRAM: December 17 - Feb 10



STUDENTS MUST ARRIVE ON THE SELECTED START DATE AND LEAVE ON SATURDAY

PROGRAM FEES

WEEKS	RESIDENCE MONTREAL	HOMESTAY MONTREAL	HOMESTAY QUEBEC
2	\$4710	\$3410	\$3410
3	\$5676	\$4510	\$4510
4	\$6655	\$5675	\$5675
5	\$7710	\$6840	N A
6	\$8975	\$7990	N A
7	\$9525	\$8690	N A
8	\$10525	\$99790	N A
Extra day	\$440	\$440	\$440

START DATES

2 weeks	Spring	APRIL 09 - APRIL 22
	Summer	JUN 25 - JUL 8 JUL 09 - JUL 22 JUL 23 - AUG 05 AUG 06 - AUG 19
	Winter	DEC 17 - DEC 30 DEC 31 - JAN 13 JAN 14 - JAN 27
3 weeks	Summer	JUN 25 - JUL 15 JUL 09 - JUL 29 JUL 23 - AUG 12
	Winter	DEC 17 - JAN 06 DEC 31 - JAN 20 JAN 14 - FEB 03
4 weeks	Summer	JUN 25 - JUL 22 JUL 09 - AUG 05 JUL 23 - AUG 19
	Winter	DEC 17 - JAN 13 DEC 31 - JAN 27
5 weeks	Summer	JUN 25 - JUL 20 JUL 09 - AUG 12
	Winter	DEC 17 - JAN 20 DEC 31 - FEB 03
6 weeks	Summer	JUN 25 - AUG 05 JUL 09 - AUG 19
	Winter	DEC 17 - JAN 27
7 weeks	Summer	JUN 25 - AUG 12
	Winter	DEC 17 - FEB 03
8 weeks	Summer	JUN 25 - AUG 19
	Winter	DEC 17 - FEB 10

ALL PRICES IN CAD · PRICES ARE PER WEEK UNLESS OTHERWISE INDICATED & ARE SUBJECT TO CHANGE WITHOUT NOTICE

Vacation Packages for Young Adults

SUMMER & WINTER

+18

PRICE LIST 2023 | REG419112021

PROGRAM INCLUDES

- Registration fee
- English | French course (24 lessons | week)
- Materials
- Accommodation placement fee
- Shared accommodation
- 3 meals per day (Special dietary needs and extra portions are subject to additional fees)
- Everyday activities
- Full-day outings OR full weekend outings (depending on on program length and start date)
- Transit pass
- Medical insurance
- Airport pick-up & drop-off

PROGRAM DOES NOT INCLUDE

- Personal expenses (extra snacks, souvenirs, etc)
- Airplane ticket
- Security deposit \$250 in cash (Residence only)

WEEKS	RESIDENCE MONTREAL	HOMESTAY MONTREAL	HOMESTAY QUEBEC
2	\$4565	\$3300	\$3300
3	\$5530	\$4375	\$4375
4	\$6490	\$5530	\$5530
5	\$7545	\$6630	N A
6	\$8820	\$7835	N A
7	\$10000	\$8930	N A
8	\$11155	\$10055	N A
Extra day	\$405	\$355	\$355



START DATES



SUMMER

June 25, July 09, July 23, August 06



WINTER

December 17, December 31, January 14



STUDENTS MUST ARRIVE ON THE SELECTED
START DATE AND LEAVE ON SATURDAY

ALL PRICES IN CAD · PRICES ARE PER WEEK UNLESS OTHERWISE INDICATED & ARE SUBJECT TO CHANGE WITHOUT NOTICE

FLAP - Kids* & Teen Camp (No accommodation)

SUMMER & WINTER

6-17 YEARS OLD

PROGRAM INCLUDES

- Registration fee
- English | French course (24 lessons | week)
- Materials
- After school activities
- Full-day outings OR full weekend outings

PROGRAM DOES NOT INCLUDE

- Personal expenses (extra snacks, souvenirs, etc)
- Airplane ticket
- Accommodation
- Meals
- Medical insurance
- Airport pick-up & drop-off
- Custodianship letter
- Transit pass

PROGRAM FEES

WEEKS	COURSES + ACTIVITIES**	COURSES + AFTER SCHOOL ACTIVITIES***	COURSES ONLY
2	\$2860	\$1565	\$845
3	\$3795	\$2145	\$1150
4	\$4765	\$2695	\$1345
5	\$5170	\$3300	\$1785
6	\$6735	\$3930	\$2090
7	\$7385	\$4615	\$2420
8	\$8205	\$5215	\$2750
Extra day	\$265	\$200	\$175

* Kids program is only during summer.

** This option includes courses, after school and weekend outings.

*** This option includes courses and after school activities.

START DATES

2 weeks	Spring	APRIL 10 - APRIL 21
	Summer	JUN 26 - JUL 7 JUL 10 - JUL 21 JUL 24 - AUG 04 AUG 07 - AUG 18
	Winter	DEC 18 - DEC 29 JAN 01 - JAN 12 JAN 15 - JAN 26
3 weeks	Summer	JUN 26 - JUL 14 JUL 10 - JUL 28 JUL 24 - AUG 11
	Winter	DEC 18 - JAN 05 JAN 01 - JAN 19 JAN 15 - FEB 02
4 weeks	Summer	JUN 26 - JUL 21 JUL 10 - AUG 04 JUL 24 - AUG 18
	Winter	DEC 18 - JAN 12 JAN 01 - JAN 26
5 weeks	Summer	JUN 26 - JUL 28 JUL 10 - AUG 11
	Winter	DEC 18 - JAN 19 JAN 01 - FEB 02
6 weeks	Summer	JUN 26 - AUG 04 JUL 10 - AUG 18
	Winter	DEC 18 - JAN 26
7 weeks	Summer	JUN 26 - AUG 11
	Winter	DEC 18 - FEB 02
8 weeks	Summer	JUN 26 - AUG 18
	Winter	DEC 18 - FEB 09

WEEK UNLESS OTHERWISE INDICATED & ARE SUBJECT TO CHANGE WITHOUT NOTICE



Online Programs

PRICE LIST 2023 | REG419112021

PROGRAM FEES

Registration fee	\$110 CAD
Siblings discount	5%

ENGLISH AND FRENCH ONLINE FOR KIDS & JUNIORS

PROGRAM	LENGTH	LESSONS PER WEEK	DAYS	SCHEDULE	PRICE
Power speaking 1	24 weeks	1.5	Sat	10:00 - 11:30 P.M	\$595 CAD 24 weeks \$295 CAD 12 weeks
Power speaking 2	24 weeks	1.5	Sat	12:00 - 1:30 P.M	\$595 CAD 24 weeks \$300 CAD 12 weeks
Junior academic courses English & French	16 weeks 8 weeks	3	Mon & Wed, Tue & Thu	6:30 - 8:00 P.M	\$835 CAD 16 weeks \$395 CAD 8 weeks
Academic English	16 weeks	2	Wed	6:30 - 8:30 P.M	\$530 CAD 16 weeks \$265 CAD 8 weeks

SCRATCH CODING PROGRAM | KIDS

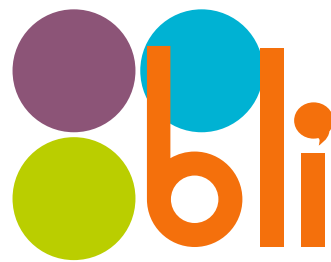
PROGRAM	LENGTH	LESSONS PER WEEK	DAYS	SCHEDULE	PRICE
KIDS SCRATCH CODING PROGRAM	12 weeks	3	Sat	9:00 - 12:00	\$990
			Mon & Wed	18:30 - 20:00	

PYTHON CODING PROGRAM | JUNIORS

PROGRAM	LENGTH	LESSONS PER WEEK	DAYS	SCHEDULE	PRICE
PYTHON CODING PROGRAM	12 weeks	3	Sat	9:00 - 12:00	\$990
			Tue and Thu	18:30 - 20:00	

Live learning
love learning

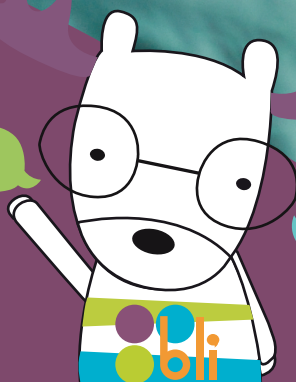
The school
where the
world
meets.



LET'S
CHAT

SALUT!

HELLO!



SOCIALIZE WITH US



blicanada.ca



blicanada



blipress

WWW.BLI.CA