

Manchester

guide 2020







 www.britannia-school.com
 info@britannia-school.com
 +44 (0) 161 923 4649

Accredited by the
 **BRITISH
COUNCIL**
for the teaching
of English in the UK




MEMBER
**ENGLISH
UK**




 **LanguageCourse**^{net} Book at worldwide lowest price at:
<https://www.languagecourse.net/school-britannia-english-academy-manchester.php3>



 +1 646 503 18 10
 +31 858880253



 +44 330 124 03 17
 +7 4995000466

 +34 93 220 38 75
 +46 844 68 36 76
 +81 345 895 399

 +33 1-78416974
 +47 219 30 570
 +55 213 958 08 76

 +41 225 180 700
 +45 898 83 996
 +86 19816218990

 +49 221 162 56897
 +39 02-94751194

 +43 720116182
 +48 223 988 072

PUBLIC TRANSPORT

Journey Planning

Transport for Greater Manchester (TfGM) is the official public transport body for the city. Its website has a wealth of information and a number of journey planning tools to take the stress out of travelling.

tfgm.com | [@OfficialTfGM](https://twitter.com/OfficialTfGM)

Free bus

Within the city centre, **free bus** (formerly Metroshuttle) provides a free service linking all the main rail stations, shopping districts and business areas.

tfgm.com/public-transport/bus/free-bus



Bus

Commercial bus services run right across Greater Manchester helping you to get to your destination. Get friendly, independent travel advice, and buy tickets and Travelcards for Greater Manchester buses, trains, trams and national coaches at one of our **Travelshops**.

Pick up free leaflets, maps and timetables, and choose from a wide range of tickets available to purchase up to two days before you want to travel.

No1 Piccadilly
Piccadilly Gardens
Manchester M1 1RG

Opening times
Monday to Friday: 7am – 6pm
Saturday: 7am - 6pm
Sunday: 10am – 6pm
Bank Holidays: 10am – 5.30pm

Tram

The Metrolink network is one of the most successful light railway systems in the UK. With frequent services there's no need to worry about a timetable, just head to your nearest stop and the next tram won't be far away. Metrolink can transport you to popular venues and attractions across the region and, if you're planning on sightseeing, Travelcards offer unlimited travel across the network. Please be sure to purchase a ticket from the on-stop ticket machines before boarding. metrolink.co.uk | [@MCRMetroLink](https://twitter.com/MCRMetroLink)



Train

In addition to the inter-city links, the rail network connects you to the neighbouring towns and districts of Greater Manchester including Ashton-under-Lyne, Bolton, Oldham, Rochdale, Stockport and Wigan.

tfgm.com/trains

Train stations, in general, are located in the heart of the city. The main train stations in Manchester are below:

- 1) [Manchester Oxford](#)
- 2) [Manchester Piccadily](#)
- 3) [Manchester Airport](#)



System One

Want to travel on any bus? Or a combination of bus, train and tram? Why not purchase a System One Travelcard? They're accepted by most bus, train and tram companies running locally, meaning you can transfer seamlessly from bus to bus or from one transport mode to the other as many times as you like.

systemonetravelcards.co.uk | [@SystemOneTravel](https://twitter.com/SystemOneTravel)

Cycle routes

Manchester is a bike-friendly city with many marked cycle lanes and dedicated routes throughout the city centre and beyond.

Visit the Transport for Greater Manchester [cycling website](#) for everything you need to know about cycling in Greater Manchester, from maps and route planning to local events and news.

Manchester on foot

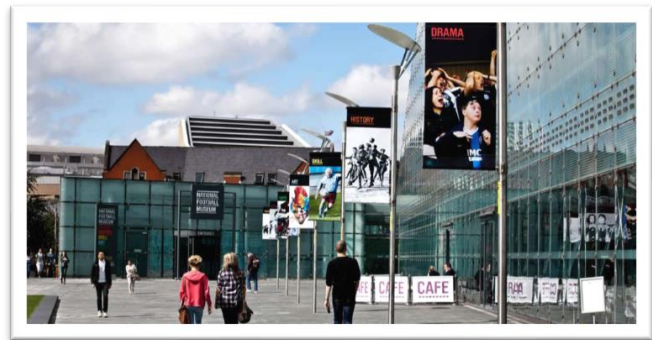
Manchester is easily explored on foot, with a city centre that you can navigate within 20 minutes. [City Hosts](#) are dotted around the centre to guide you with directions, public transport information and details on events taking place.



THINGS TO SEE AND DO IN MANCHESTER

Attractions in Manchester

Have a look at the hundreds Manchester attractions that offer great things to do for children and adults alike. A huge number of attractions in Manchester are free including *Manchester Museum*, *Manchester Art Gallery*, *the Museum of Science and Industry*, *Imperial War Museum North*, and the *People's History Museum*, as well as the fantastic *National Football Museum*. For something different, why not head to *The Lowry* at Salford Quays, home to three stunning theatres and galleries, or *Knowsley Safari Park* for an amazing Safari Drive. For a masterpiece of Victorian Gothic architecture, *The John Rylands Library* is not to be missed. Grab a slice of the action at one of Manchester's world-famous football clubs, with a stadium tour at either *Manchester United* or *Manchester City*, or check out world-class cricket at *Emirates Old Trafford*.



Daily Guided Walking Tour

An entertaining and knowledgeable guide will show you around the city centre, giving you a taste of the history, architecture and culture and showing you the major sights including Manchester Town Hall, Manchester Cathedral and the Royal Exchange. Manchester led the Industrial Revolution to become Cottonopolis and clothed the world. Tours run every day, year-round, including bank holidays. Please meet your guide outside Manchester Central Library at least five minutes before the tour starts at 11:00.

£10 per person

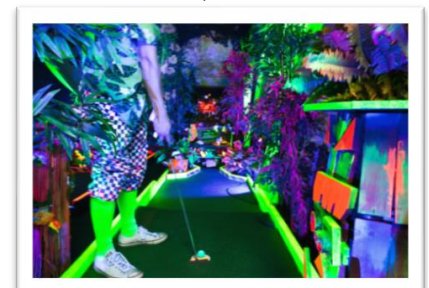
No booking required turn up and pay the Guide direct on the day.

Manchester Central Library, St Peters Square, Manchester, Greater Manchester, M2 5PD
11:00am – 12:30

Junkyard Golf Club

Welcome to Junkyard Golf Club! Home of crazy golf, booze and bad puns. Get excited on three mashed up 9-hole crazy golf courses. Groups can put their way through all sorts of bizarre holes; think UV slides, UFC bear cages, a hip hop farm and a tree house bar!

First Street, Whitworth Street, Manchester, Greater Manchester, M15 4FN
Adults: £9.50 per ticket



Breakout – Town Hall

Breakout is a live escape room game - a group of friends, family or colleagues are locked in a room for an hour and have to solve a series of puzzles, tasks, riddles, and games in order to escape. With 60 minutes on the clock, players need to search high and low for clues and codes, solve problems, and most importantly work as a team if they want to win. No physical activities involved in the games.

36 High Street, Manchester. M4 1QB - Price Per Person: £19.00

Go Ape! Rivington

Live life more adventurously and unleash your inner Ape!
Bring your tribe and enjoy the UK's No.1 Tree Top Adventure.
With breath-taking scenery, epic zip wires and hours of fun -
They promise you a day out you'll never forget!

Rivington Lane, Horwich, Manchester, BL6 7SB
Adults (18+) from £33.00
Kids (10-15) from £25.00



Language Exchange

Events and social meetups for international and language students in Manchester and Salford area! If you're in Salford or Manchester as an International Student, **Globe Café** is the place to be!

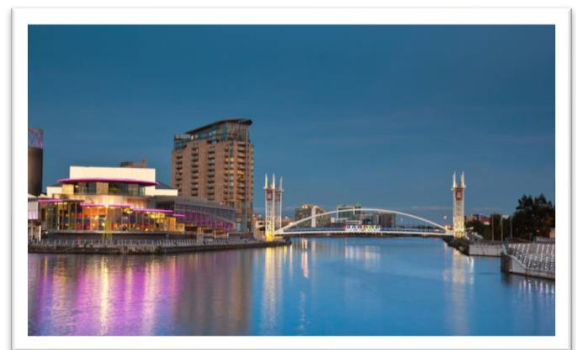
Whether you want to meet new friends, practise your English, play games, take part in local trips, talk about culture and cultural shocks, or discuss important questions about life, we hope you make Globe Café your home away from home!
They often have about an hour of games and chats for students to get to know each other, then they have a 'focus' which is a cultural discussion.

Meetings take place every Friday **6:00 - 8:00 pm at 1 St. Philips Place, Salford, M3 6FA** (inside Union Cafe, Angel Centre)

(<http://salfordglobecafe.blogspot.com/p/how-to-find-us.html>)

Salford Quays

Discover Greater Manchester's modern waterfront destination, also home to some of the most beautiful attractions and iconic buildings in the UK. Salford Quays: the home of MediaCityUK is one of the Northwest's best cultural, sporting and leisure destinations.





SHOPPING IN MANCHESTER

Visitors travel from all over the world to shop in Manchester and it's easy to see why.

Shopping centres such as *Manchester Arndale* and *Trafford Centre* as well as high street destinations such as *Exchange Square* and *Market Street* offer an unrivalled selection of international brands combined with the best of British at department stores like *John Lewis*, *Selfridges*, *Debenhams* and *Marks and Spencer*.

For that extra special something, visit boutique districts around King Street, Spinningfields and New Cathedral Street and browse their designer shops. Or if one-off independents and handmade is more your thing, Manchester's alternative and creative heart, *The Northern Quarter*, is home to countless vintage stores, record shops, cafés, bars and restaurants.

Manchester Arndale

Find a huge selection of exciting shops from the leading high street names such as Apple, Next, River Island, Topshop and Wallis to lots of smaller, stylish specialists and food outlets - and all under one roof.

Market Street, Manchester, Greater Manchester, M4 3AQ

Bus

The free Metroshuttle, routes 1 and 2, stop next to Manchester Arndale.

Train

Manchester Arndale is within 10 minutes' walk of Manchester Victoria train station

Trafford Centre

Trafford Centre have got everyone's favourite brands and some visitors might not have discovered yet including Selfridges, Stradivarius, Pull & Bear, Victoria's Secret, Primark and Khaadi.

For those who are more of a big day out shopper why not catch the latest blockbuster at ODEON IMAX, go deep underwater at SEA LIFE or explore LEGOLAND® Discovery Centre. Add in Namco Funscape and Laser Quest and visitors will have an action-packed weekend! And when hunger strikes visitors will be spoilt for choice with over 60 amazing restaurants including new additions Bill's, Five Guys, LEON and wagamama.

Regent Crescent, Manchester, Lancs, M17 8AA

Bus X50 is our frequent bus route from Manchester Piccadilly, running up to every 20 minutes from early till late, 363 days a year. For further information please visit www.stagecoachbus.com/manchester-x50.aspx

Exchange Square

Exchange Square, located near to Victoria Train Station and The Printworks, hosts seasonal events as well as designer shops!

Exchange Square, Manchester, GREATER MANCHESTER, M3 1BD

Spinningfields

The Avenue in Spinningfields has the best international fashion collections in the North West. Featuring collections from Armani, Mulberry, Flannels, Nicky Clarke, Oliver Sweeney and Philip Stoner and many more fashion must-haves!

Spinningfields, Manchester, M3 3AE

The Northern Quarter

Located between Piccadilly and the Ancoats, the Northern Quarter has a unique character and charm, one set to continue through its ongoing development.

Manchester's creative, urban heart is home to countless independent fashion stores, record shops, cafés, bars and restaurants and the world famous Afflecks Palace, providing cheap outlets for independent designers and traders across four floors.

Retro Rehab - a vintage clothing boutique – offers gorgeous and unique vintage and hand-tailored clothes and accessories, while the Manchester Craft & Design Centre, housed in the beautifully restored former Victorian Fish and Poultry Market, is home to an array of artist-run studios offering the best in local design, jewellery, bags and accessories.

There are also a lot of shop-café hybrid venues that are worth checking out. Try Café Pop, a vintage shop with a small downstairs café, and Oklahoma, a bazaar of all things weird and wonderful including gifts and homeware and a quirky little eatery.

Apart from offering an alternative shopping fix, The Northern Quarter is home to many independent restaurants and bars, providing a unique experience after dark. Try Odd Bar for continental beers, The Bay Horse for a pool table, Trof for a relaxed yet fun atmosphere and Mint Lounge for dancing the night away.

Various Locations, Northern Quarter, Manchester, Greater Manchester, M4 1HQ



HOTELS

Hilton Hotels

DoubleTree by Hilton Hotel Manchester – Piccadilly (0)161 242 1001

DoubleTree by Hilton Hotel Manchester-Piccadilly is ideally located in the heart of the city. The hotel is just a 2 minute walk from Piccadilly train station and is the perfect location for both leisure and business.

Personal guest service and attention to detail ensures comfort at every level with complimentary Wi-Fi, 42 inch flat screen TV with Sky Sports channels, luxury Sweet Dreams® beds, floor-to-ceiling opening windows, air conditioning, mini fridge and complimentary mineral water as standard in every guestroom.

One Piccadilly Place, 1 Auburn Street, Manchester, GREATER MANCHESTER, M1 2HY

Hilton Manchester Deansgate

Housed in the Beetham Tower - Manchester's first true skyscraper, and an iconic part of the city skyline - the hotel is a destination in itself. It takes pride of place in the city centre, and is walking distance from Manchester's thriving business districts, shops and restaurants.

303 Deansgate, Manchester, GREATER MANCHESTER, M3 4LQ (0)161 870 1650

IBIS Budget Manchester Salford Quays

Ibis budget Hotel Manchester Salford Quays (ex Etap Hotel) is a low-cost hotel located in the Salford Quays district. Book this Manchester hotel to be close to the shopping and nightlife of Manchester city centre. The hotel has 210 guest rooms and is 100% non-smoking. Each room comes with en-suite shower, air cooling and flat screen TV. A good value breakfast buffet is served every morning. There is a limited amount of indoor parking available and there's chargeable WI-FI in the public areas.

19 Trafford Road, Manchester, Greater Manchester, M5 3AW

IBIS Hotel Manchester Pollard Street

Ibis budget Manchester Pollard Street is located in the city centre; only a 10 minute walk from Piccadilly Station, the "Sportcity" complex and Manchester City Football Ground. 150 Cocoon rooms for up to 3 people, En-suite shower and flat-screen TV. Free wifi throughout. 24/7 reception. 24/7 snacks/drinks. Good value buffet breakfast. No on-site car-park. 100% non-smoking. All at an affordable price.

2 Pollard Street, Manchester, M4 7DB

Travelodge Manchester Central Arena

Travelodge is a great place for business travellers. With speedy WiFi, our signature king size Travelodge Dreamer™ bed and over 180 hotels offering a bumper breakfast to kick start your day, it's no wonder we are a finalist for the Best Budget Hotel Brand at the Business Travel Awards 2019

31 Piccadilly, M1 1LU, United Kingdom, M1 1LU

Premier Inn Manchester Heaton Park

A restful room to return to. The soundest sleep, in a bed you'll want to take home. At Premier Inn you're guaranteed exceptional comfort and outstanding quality in every one of our 65,000 room.

Premier Inn Portland street

112-114 Portland Street, Manchester, Manchester M1 4WB

Premier Inn Deansgate Locks

Medlock Street, Manchester, Greater Manchester M15 5FJ

Manchester Central Hotel

Bishopgate, 7-11 Lower Mosley Street, Manchester M2 3DW

Piccadilly Luxury Suites

Set within 450 yards of Canal Street in the middle of Manchester, Piccadilly Suites provides accommodation with free WiFi, seating area and a kitchen. There is a private bathroom with a bath or shower and free toiletries in each unit, along with a hairdryer.

31 Back Piccadilly, Manchester M1 1HP

Oxnoble

10 modern and stylish en-suite bedrooms with free wifi, tea/coffee making facilities and a flat screen TV with freeview.

Twin, Double, Triple and Family room types available.

Oxnoble, 71 Liverpool Road, Manchester, M3 4NQ

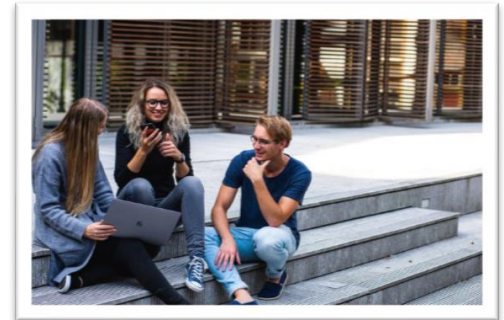
0161 834 3321

PRIVATE ACCOMMODATION

Please note that Britannia does not hold any accommodation agreements with the providers below and is only providing information and resources about private rented accommodation in Manchester. The accommodation below may involve: signing a tenancy contract, paying your own bills such as internet, electricity, water and council tax.

Student Halls in Manchester

With almost 100,000 students across three high quality universities, Manchester has a well-deserved reputation as a great student city. Here you will find all types of student accommodation in Manchester including student houses, flats and halls.



<https://www.accommodationforstudents.com/student-halls/manchester>

Student Accommodation

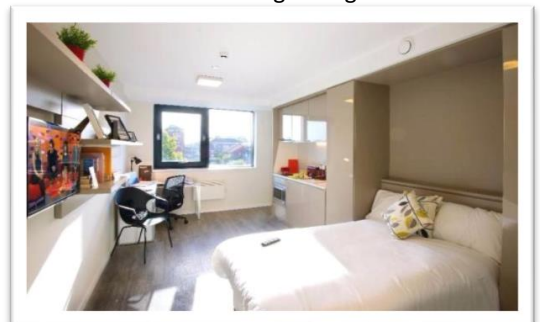
Whether nearby or coming from overseas, we will help you find the right student accommodation for the right price so you can be on your way to experience the best and brightest this moment has to offer.

<https://sturents.com/>

VITA Student

Student accommodation with big en-suites, big SMART TVs, big double beds and kitchens big enough to serve big meals.

<https://www.vitastudent.com/student-accommodation/manchester>



Spare room (Private rooms in shared apartments)

The UK's busiest flat share site. Every three minutes, someone finds a flatmate with us. That's a lot of people, meaning more choice for you - and more chance of finding flatmates you really click with.

https://www.spareroom.co.uk/flatshare/?search_id=745875472&

Rightmove (Long term Accommodation)

With the UK's largest selection of rental properties across England, Scotland and Wales, you're more likely to find your next home on Rightmove than anywhere else.

Listing a wide range of property types and styles, we cover everything from student lettings, to studio flats, detached family homes and even luxury Mayfair penthouses.

<https://www.rightmove.co.uk/property-to-rent.html>

Air BnB (Short Term Accommodation)

Airbnb is an online marketplace which lets people rent out their properties or spare rooms to guests. Guests get good value accommodation at a huge range of price points, from a few pounds a night to hundreds and often in prime locations where a normal hotel would cost infinitely more.

https://www.airbnb.co.uk/s/Manchester-Central--Manchester/homes?adults=1&children=0&checkin=&checkout=&refinement_paths%5B%5D=%2Fhomes&allow_override%5B%5D=&s_tag=yWUmCZOe

Hotels Directory

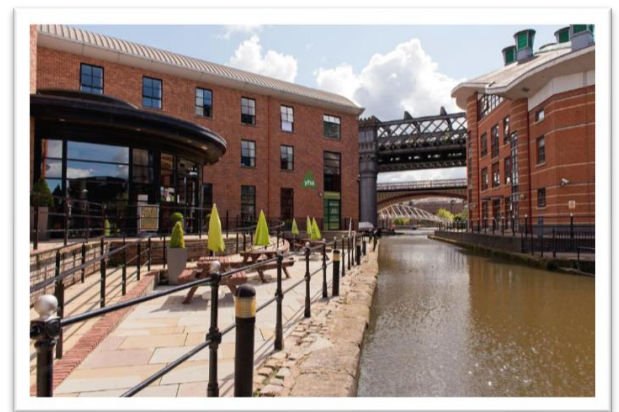
Please use the link below to search for different hotels around Manchester.

<https://www.booking.com/>

YHA Hostel (Youth Hostel)

With a varied landscape, inspiring views and something for everyone, England and Wales is a must for all. Discover the best areas of these two magnificent countries with YHA as you experience our excellent accommodation in the most beautiful and accessible locations.

<https://www.yha.org.uk/>



HEALTH AND SAFETY

EMERGENCIES: Always call **999** to ask for an ambulance/ police/ firefighter.

Students whose courses last at least six months are entitled to free health care under the UK's National Health Service (NHS). This includes access to a family doctor (called a general practitioner or GP) and most hospital treatment, although there are charges for some services such as prescriptions.

If you are entitled to NHS care, you should register with a GP near your accommodation within the first few days of arriving in the UK.

- Find your local GP on the NHS website
<https://www.nhs.uk/Service-Search/GP/LocationSearch/4>

If you are ill and it's not an emergency, you can go to a walk-in centre. The nearest NHS walk-in centre is:

BOOTS 32 Market Street, M1 1PL, Manchester.

European Students: Please remember to bring your European Health Insurance Card. You can use it in Walk-In Centres and Hospitals.



If you need to visit a hospital or a dentist in an emergency, you can visit:

Hospital: **Manchester Royal Infirmary Oxford Road, Manchester M13 9WL**

Dentist: **Manchester Dental Practice 34 High Street, Manchester, M4 1QB**

Non-European students studying on courses of less than 6 months' duration can't have free health treatment and must take out private health insurance.

Non-European students studying on courses longer than 6 months must pay an Immigration Health Surcharge to have free health treatment.

Staying safe

A Manchester Student Safety Facebook page has been created Police, Manchester City Council and the universities which has useful information and important advice on staying safe. It includes advice on keeping iPods and mobiles safe, keeping burglars out and staying safe on a night out – along with other issues that affect young people.

<https://www.facebook.com/mcrstudentsafer/>

Taxis that operate in Manchester are either Hackney carriages (black taxis) or clearly marked private hire vehicles. Hackney carriages have a plate number displayed on the outside and inside of the cab. Manchester private-hire vehicles have a large yellow sticker with the Manchester crest on the front of the vehicle, so they are easy to see. Do not get in a private hire car unless you have booked them first.

Bicycle Safety

- Always lock your bike if leaving it unattended
- Choose a place to lock your bike where there are lots of people and a high level of natural surveillance
- Invest in a good lock. D-shaped are usually the best
- Lock both the wheel and frame to make your bike more secure
- Make sure that any quick release and detachable items such as wheels, saddles and lights are either secured or removed and taken with you
- Register your bike through an approved scheme



Remember: you can register your valuables such as laptops, mobile phones and bikes for free at <http://www.immobilise.com/>. It's a quick, easy and free way of logging the details of your property on a national database that police can access and compare against items that have been found or recovered from suspected criminals.

CAREERS ADVICE

Students from the European Economic Area (EEA) and Swiss nationals

If you are an EEA or Swiss national, you do not need permission to work in the UK.

For advice on being in the UK as a EU national, visit **UKCISA**. (EEA) students will need to apply for a National Insurance number before they start looking for work.

<https://www.ukcisa.org.uk/Information--Advice>

Non-EEA students on English Language courses or Foundation degrees

If you have Tier 4 immigration permission and you are studying on a course that is below degree level, for example: IELTS Plus or Foundation Year, you are legally permitted to work, with the following restrictions:

- work part-time (maximum 10 hours in any week) during term time
- work full-time during vacations
- you cannot fill a full time permanent vacancy
- no self-employment (this means no freelance or consultancy work and you cannot set up your own business)
- no work as a professional sports person or entertainer
- this does not mean an average of 10 hours, it means you cannot work more than 10 hours in any seven-day period.

International students who are looking for paid work in the UK will need to apply for a VISA and a NI number. NI is free to apply and applications should be made by phone to the National Insurance Number application line.

Working in the UK

It's well-known that one of the main challenges facing international students is the work visa. There are generally four visa options for those who want to work in the UK after graduation.

[Tier 2 - Employer sponsored visa](#)

[Tier 4 - Doctoral Extension Scheme for PhD students](#)

[Tier 5 - Short term career related experience in the UK](#)

Each option has its own pros and cons. For Tier 2, you can extend your stay and no labour market test is needed, however, you'll need the sponsorship certificate and must pass the points-based

assessment, which includes a minimum salary. The new Tier 5 may sound more attractive as there are no employer and salary requirements, but then students will have to leave the UK afterwards.

Finding a job

Volunteering

As an international student, you can take part in voluntary work while you're studying. Volunteering is a very rewarding way to learn new skills, boost your confidence, meet new people, contribute to the local community – and add some individuality to your CV.

https://secure.manchester.gov.uk/info/200101/voluntary_organisations/5787/volunteer_to_get_more_experience/1

Working part-time

As an international student, you can work for several different employers at the same time if you want – but you must be very careful to ensure that you don't work more than the maximum number of hours permitted on your visa within any seven-day period.

Find a graduate job from a sponsoring employer on the UKBA sponsor register. Students interested in working in the UK after their studies would be advised to look at the employers who are already registered and also check to determine if an employer of interest is registered to take migrant workers under Tier 2 General. Some employers recruit all year round, others close around October/November.

It would also be useful for students to be aware of the UKBA Employer Helpline so that if a potential employer needs advice regarding the routes to recruiting a non-EEA graduate, they can obtain it from there. The UK Council for International Student Affairs (UKCISA) advice line is also an excellent source of support for international students.

- [UKBA](#) Employer Helpline: telephone 0300 123 4699 or via [email](#)
- UKCISA advice line open from Monday to Friday, 1pm - 4pm: 020 7107 9922

