



# ACTIVITIES - BERLIN

## During the week - Tours

### **Berlin Wall**

>> 3 hours >>

The best place to learn about the history and reality of the Berlin Wall is the memorial near Nordbahnhof. Here, original remains of the Wall are complimented by a recreating of the complete border fortification behind the Wall and an overview of the history and major events.



### **Charlottenburg**

>> 2 hours >>

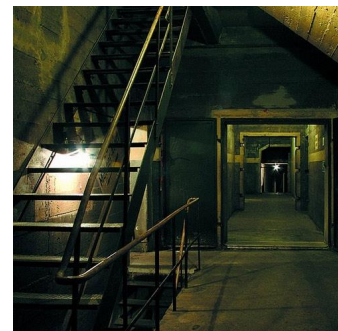
The Charlottenburg palace was built as a summer residence for the Prussian royal family. It is located in the western part of Berlin and set within a grand landscaped garden. The historic living quarters and several buildings in the park are open to visitors.



### **Below Ground**

>> 2 hours >>

Berlin has a rich and fascinating history which is not limited to the landmark buildings above ground. Several guided tours allow visitors to safely explore underground bomb shelters, emergency storage facilities and disused underground stations.



## During the week – Museums

### Story of Berlin

>> 3 hours >>

This museum presents the entire history of Berlin in entertaining and interactive displays. Visitors can choose which topics to explore in greater depth through multimedia installations. A guided tour of a nuclear fallout shelter for 3.500 people is part of the offer.



### Historic Museum

>> 3 hours >>

Located in the heart of Berlin next to Museum Island, the historic museum hosts many interesting artefacts illustrating the history of Germany and its position in Europe. Regular special exhibitions provide unusual in depth views of popular topics.



### Planetarium

>> 2 hours >>

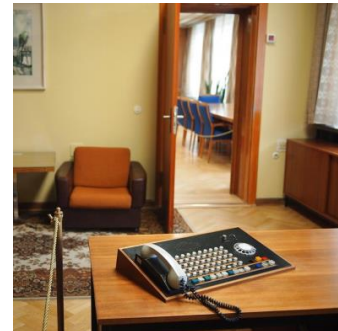
The planetarium in East Berlin has just been extensively renovated and modernized, featuring a state of the art Zeiss Cosmorama projector and full surround sound system. Different shows present fascinating views of the galaxy.



### Stasi Museum

>> 2 hours >>

The Stasi was the state security service of East Germany and is described as one of the most effective and repressive secret police agencies ever. The museum is situated in the original East Berlin headquarters, showing the command offices and explaining the full scope of the operation.



## During the week – Sports

### **Climbing Course**

>> 3 hours >>

Following a safety briefing and explanation of the climbing techniques by professional instructors, students can test their skills on several different rope courses at varying difficulty levels. The courses are built between the trees of a large park, complete with a relaxing beer garden.



### **Beach Volleyball**

>> 3 hours >>

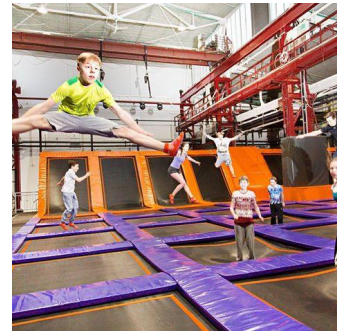
Indoor or outdoor, beach volleyball can always be enjoyed in Berlin. In summertime, many river beach bars set up full-scale courts while all year round indoor beach centers provide both fun and relaxation.



### **Jump House**

>> 2 hours >>

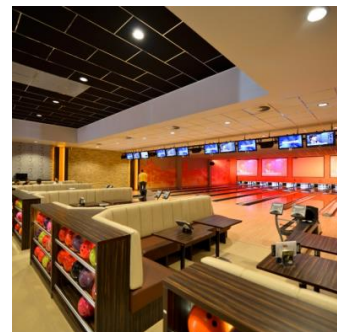
Set up with several different areas the jump house center offers freestyle exercising or great fun as a group. Instructed by professional trainers, even beginners will quickly make full use of the jump house. Special courses and events can also be booked.



### **Bowling**

>> 2 hours >>

Bowling is a favorite pass time for Berlin residents and tourists alike. Almost every part of the city hosts at least one bowling center and many of them offer special event nights such as laser bowling or party events.

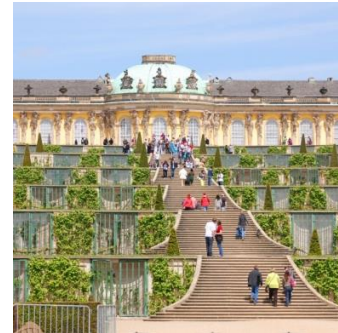


## On weekends

### **Potsdam**

>> 8 hours >>

Situated just outside of Berlin and within easy reach by public transport, the massive park of Sanssouci palace is home to several palaces, guest buildings and historic buildings that can be visited. The charming city center of Potsdam itself offers much more to be explored afterwards.



### **Sachsenhausen**

>> 6 hours >>

Located north of Berlin in the state of Brandenburg visitors find the memorial site of the former Nazi concentration camp Sachsenhausen. The former grounds and some original buildings are put into perspective by an exhibition and documentation center.



### **Koepenick**

>> 6 hours >>

Now part of Berlin, the small town of Koepenick is located between large woodlands, rivers and lakes. After exploring the historic city center, neighbouring Friedrichshagen invites visitors to enjoy the lake front and small shops and restaurants.



### **East Berlin Zoo**

>> 4 hours >>

Most visitors to Berlin visit the better known Zoo in West Berlin, while the East Berlin Zoo offers a unique experience. Set inside the largest zoo park grounds in Europe, it has spacious enclosures and indoor displays as well as a historic palace and quiet gardens.

