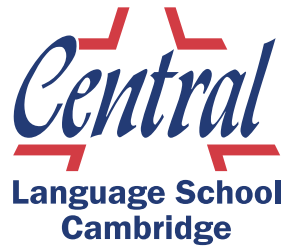


# Cambridge City Centre

Everything on this map, including all major colleges and attractions, is within a ten-minute walk of the School.



CAMBRIDGE CITY CENTRE • SMALL CLASSES • INDIVIDUAL ATTENTION



The Stone Yard Centre  
 41B St Andrew's Street  
 Cambridge CB2 3AR UK  
 +44 (0) 1223 502004  
 info@centrallanguageschool.com

[www.centrallanguageschool.com](http://www.centrallanguageschool.com)



Central Language School Cambridge is a registered charity with a board of Trustees who act in an advisory capacity. Charity Number 1056074



Accredited by the  
**BRITISH COUNCIL**  
 for the teaching  
 of English in the UK



# Central Language School Cambridge



# Welcome!

We look forward to welcoming you to this beautiful historic city and helping you to learn English.

**Central Language School Cambridge** was founded by Christians in 1996. Students from over 90 countries have studied at the School.

- City Centre location
- Accredited by the British Council
- Maximum 10 students per class
- Students aged 18 and over
- Small with family atmosphere

Cambridge is a small city which offers a lot of cultural, social and learning experiences.

**Central Language School Cambridge** is situated in a modern building next to a beautiful stone church. Our classrooms are located on the first and second floors of *The Stone Yard Centre*, and there is a café on the ground floor. Classrooms have interactive whiteboards, and there is a small library at the school where students can borrow books, including course books.



# Courses

Continued on the next page

<b>General English</b>	Full-time	15 hours per week	Monday-Friday from 9.30am-1pm
<b>Intensive English</b> A combination of General English and Afternoon Course	Full-time	21 hours per week	Monday-Friday from 9.30am-1pm Tuesday, Wednesday and Thursday 2pm-4pm
<b>Afternoon Course</b>	Part-time	6 hours per week	Tuesday, Wednesday and Thursday 2pm-4pm
<b>BEGINNERS Morning Course*</b>	Part-time	4½ hours per week	Tuesday, Wednesday and Thursday 9.30am-11.00am

**One-to-one lessons**  
By arrangement with the Principal

**Coffee break** 11.00am-11.30am  
**Lunch break** 1pm-2pm  
You can eat your lunch at School or in one of the many city centre cafés and restaurants near the School. You can also bring food to the School to eat.

\*Depending on demand

This is more than a school because in addition to helping you improve your English it allows you to meet new people, make new friends and grow internally thanks to the motivation that teachers give you every single day.

Michele, Italy



Great location, amazing teachers and caring atmosphere. I've had an amazing two months at Central preparing for my exam!

Leticia, Brazil



# Courses

Continued

## Full-time

### General and Intensive Courses

Students on the General Course study in the mornings from 9.30am-1pm.

Students on the Intensive Course do a combination of the General Course and the Afternoon Course.

You can start your full-time General or Intensive Course on any **Monday** unless it is a Public Holiday. (Please note that the school is closed for the 2 week Christmas period.)

On your first day you will have an induction session and take a placement test so that we can see which class level is best for you.

For morning classes we use different course books\* throughout the year from Elementary to Advanced Level. There are many opportunities for you to practise your speaking, listening and pronunciation as well as your vocabulary, reading, grammar and writing. There is also some exam preparation if required. Each week your teachers will put information about classes on the noticeboard.

On Mondays you will review work from the week before or take a monthly progress test.



You can also study a special language topic such as Phrasal Verbs or Everyday Expressions.

At the end of each week you have the

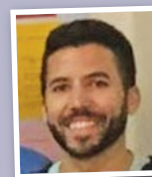
opportunity to evaluate the lessons and you can ask for a monthly progress appointment with one of your teachers.

Full-time students who have studied for 2 weeks or longer will receive an attendance certificate and a report at the end of their course.

*We do not recommend the Intensive Course for students who are Pre-Intermediate Level or below.*

\*Students borrow the course books at no extra cost, but must pay for any lost or damaged books.

## Part-time



*I have been here for a short time, however it has been one of the best experience in my life. I have had excellent teachers, nice classmates and friends, like a family. Thank you for everything.  
Miquel, Spain*

### Afternoon Course

You can start your Afternoon Course on any **Tuesday** after you have taken the placement test.

On each of the 3 afternoons, you work on different language skills focusing on:

- Speaking, Listening and Pronunciation
- Reading and Use of English
- Writing

A typical week may include:

- How to find information in different texts
- How to write a formal and informal email
- Exam skills for PET, FCE, CAE, CPE and IELTS
- Useful language for everyday life



Photo © Stage 3 Films

There is also opportunity for discussion in pairs and groups.

### BEGINNERS Morning Course

This course is suitable for Beginner levels only and covers both vocabulary and grammar with an emphasis on listening and speaking.

## Activities

Students on all courses can join our SOCIAL ACTIVITIES programme.



See next page for more information.



Photo © Stage 3 Films

## Examinations

Cambridge Exams and the IELTS exam can be taken in Cambridge. Please see our website for more information.

If you enter for an exam through the School, we will give you an exam pack which includes information about the exam and part of an exam for you to try.

<b>KET</b>	Key English Test	A2 level*
<b>PET</b>	Preliminary English Test	B1 level
<b>FCE</b>	First Certificate in English	B2 level
<b>CAE</b>	Certificate of Advanced English	C1 level
<b>CPE</b>	Certificate of Proficiency in English	C2 level

\*Levels relate to the Common European Framework of Reference for Languages

Before taking the *real* exam, students can choose to do a *trial* exam at the School, with feedback.

# Activities

## Social and cultural

Cambridge is a beautiful, ancient city and there are many places for students to visit: the famous University Colleges, the River Cam and its bridges, interesting museums and historic buildings. There are also theatres, cinemas, sports centres, swimming pools, scenic walks, restaurants and a lively nightlife.



Each week the School organises social activities such as:

- Punting on the River Cam
- Listening to the famous King's College Choir
- Museum visits
- Walks, cycle rides or guided tours
- Pub visits
- International lunch
- Baking or afternoon tea
- Games, quizzes or photography competitions
- Bible discussion
- Bowling or Karaoke
- Train trip to visit Ely Cathedral



All activities are optional and many are free. For some activities there is a small entrance fee. Please see our website for more information.

## Weekend excursions London theatre trips

From Cambridge you can take a coach to different places in the UK including London, York, Oxford, Bath, Brighton and Canterbury or you can go to a theatre in London to watch a show. These visits, by coach, are organised by a tour operator. Students can book and pay for these in our office.

## Work

Many students come to us for English in order to improve their chances of finding work in Cambridge after their course. Other students work part-time during their course.

We can help you prepare a CV and advise you on where to apply. Finding work depends on having a good level of English, correct documents, experience and an appropriate CV.

## Worship

Cambridge has many churches, of all traditions, as well as places of worship of other faiths. Staff at the School can give you more information.

*I met here such wonderful, friendly and (it's important) experienced teachers.  
Olga, Russia*



*All the teachers are like your family. They are kindly, friendly and lovely. I also learned many foreign cultures and traditions from my classmates. I never forget you CLS!  
Harry, Taiwan*



# Accommodation

## Homestay Accommodation

Staying in the home of a local host is a great way to improve your English as you practise language you have learnt in the classroom, and you can experience more about British life and culture. Our hosts are friendly people offering a good standard of accommodation.

### Your homestay will include:

- Your own private room in the home
- Only 1 or 2 students in the home, occasionally more (maximum 4)
- No other students of the same language
- Weekly laundry

### Half-board

Your host will provide all meals except for week-day lunches.



### Self-catering

You will buy your own food and can cook in the host's kitchen.



### Bed & Breakfast

Your host will provide you with breakfast but you must eat all other meals out in restaurants or cafés.



## Other Accommodation



### Student Residence

In July and August we offer self-catering accommodation in

student residential rooms very close to the school. You will have your own room and share a bathroom and kitchen with other students.

### Own Accommodation

Some students prefer to organise their own accommodation.

**Please note that we offer accommodation to full-time students only.**

**Please see Fees and Enrolment Information for accommodation prices.**



*I felt really comfortable with my hosts. They were friendly and available every time that I need.*

*They took me to different places like badminton, eat in a restaurant, visit Wimpole Hall.  
Raffaello, Italy*

# Travel

## To Cambridge

**London Stansted Airport** is the nearest airport – approximately 30 minutes by direct train.



### Other airport distances, by coach:

**Luton Airport:** about 1 hour 45 minutes  
**London Heathrow Airport:** about 2 hours  
**London Gatwick Airport:** about 4 hours 30 minutes

We can also arrange a taxi transfer for you from the airport.

There are regular trains from London King's Cross Station and the fastest journey time is about 50 minutes. There are also trains from Liverpool Street Station, London.

Check train and coach times:

-  [www.nationalrail.co.uk](http://www.nationalrail.co.uk)
-  [www.nationalexpress.com](http://www.nationalexpress.com)

## To School

The School is a 3 minute walk from the city centre bus station. Many students come by bus, others prefer to cycle and some walk. The average travelling time from homestay to school is 20 minutes by bus or bicycle.

*My hosts were friendly, helpful, loving. I liked their sense of humour, their great ability to really make you feel at home.  
David, France*



# Enrolment information

Please see our **ENROLMENT & FEES** information sheet for prices.

## The price for the course includes:

- School materials and the loan of course books
- Access to self-study resources
- Free wi-fi in School
- Certificate and report for full-time courses
- Exam preparation if required
- Many social and cultural activities

We recommend that you arrange insurance to cover medical treatment, loss or damage of personal possessions and loss of fees if you have to cancel your course. We cannot accept responsibility for students' personal possessions.

Students from the European Union should bring correct documentation for medical care.

## Emergencies

We want you to enjoy living in Cambridge. We have a **24-hour phone number** you can call if you have any concerns.



## The price does not include:

- Examination fees
- Grammar books and examination practice books
- Optional excursions
- Personal and travel insurance
- Lunches
- Travel to and from School by bus or bicycle

## Cancellation Policy

- If you cancel 2 weeks before the start of the course we return all fees except the course and accommodation deposits.
- If your application for a UK Student Visa is unsuccessful we return all fees except the course and accommodation deposits on receipt of the official Visa Refusal Notice.
- If you cancel after the start of the course we regret that we cannot refund fees paid.

Please read our Privacy Policy on our website.

*I will go home with my luggage full of presents but especially full of this amazing experience.*  
*Maria Clara, Italy*



*This has been a wonderful experience. The staff, the teachers and the classmates were amazing. The way they supported me during my learning process, so I feel very comfortable. I think that I achieved all my goals that I set out at the beginning of this course, and I am really happy because this is an adventure with a very great result — which is improving my English.*

*Edvardo, Colombia*

*Great location.  
Amazing teachers.  
Caring atmosphere.*

