



# CSL 2024 PRICE LIST



**PLEASE NOTE THE FOLLOWING  
APPLIES TO ALL COURSES, ARE  
PRICED PER STUDENT PER WEEK,  
AND ARE IN GBP/£**

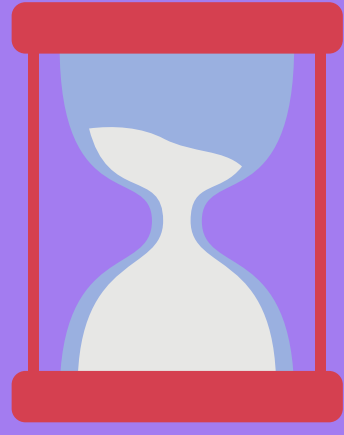


# £62.00

# ENROLLMENT FEE

This fee covers all admin needed to enrol on our courses and is applied to **all students** when first starting here at City School of Languages.





# INTENSIVE COURSES

The below fees are for a student to enrol on our full time course of **23 hours per week**

from: Monday to Thursday 9:30 – 15:30

+ Friday 9:30 – 12:30.

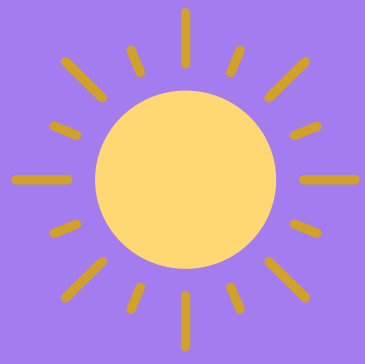
**£350.00 per week**



# ONE-ON-ONE COURSES

The below fees are for a student to enroll with a **personal tutor** at a time they choose and for as long as they need. The tutor will design a specific course just for the needs of the student.

**£44 per hour**



# AM - PART TIME COURSES

The below fees are for a student to enrol on our morning part time course of **15 hours per week** from: Monday to Friday 9:30 – 12:30.

**£260 per week**



# PM - PART TIME COURSES

The below fees are for a student to enrol on our afternoon part time course of **8 hours per week** from: Monday to Thursday 13:30 – 15:00.

**£152 per week**

# ANY QUESTIONS PLEASE CONTACT US:



**ENQUIRIES@CITYSCHOOLOFLANGUAGES.CO.UK**



**+44 (0)1792 459 615**