



Cork English World

LEARN ENGLISH IN IRELAND



Book at worldwide lowest price at:

<https://www.languagecourse.net/school-cork-english-world-cork.php3>

🇺🇸 +1 646 503 18 10
🇧🇷 +31 858880253

🇬🇧 +44 330 124 03 17
🇩🇪 +7 4995000466

🇪🇸 +34 93 220 38 75
🇫🇷 +46 844 68 36 76
🇮🇹 +81 345 895 399

🇩🇪 +33 1-78416974
🇩🇪 +47 219 30 570
🇩🇪 +55 213 958 08 76

🇨🇦 +41 225 180 700
🇨🇦 +45 898 83 996
🇨🇦 +86 19816218990

🇩🇪 +49 221 162 56897
🇩🇪 +39 02-94751194

🇩🇪 +43 720116182
🇩🇪 +48 223 988 072

Contents:

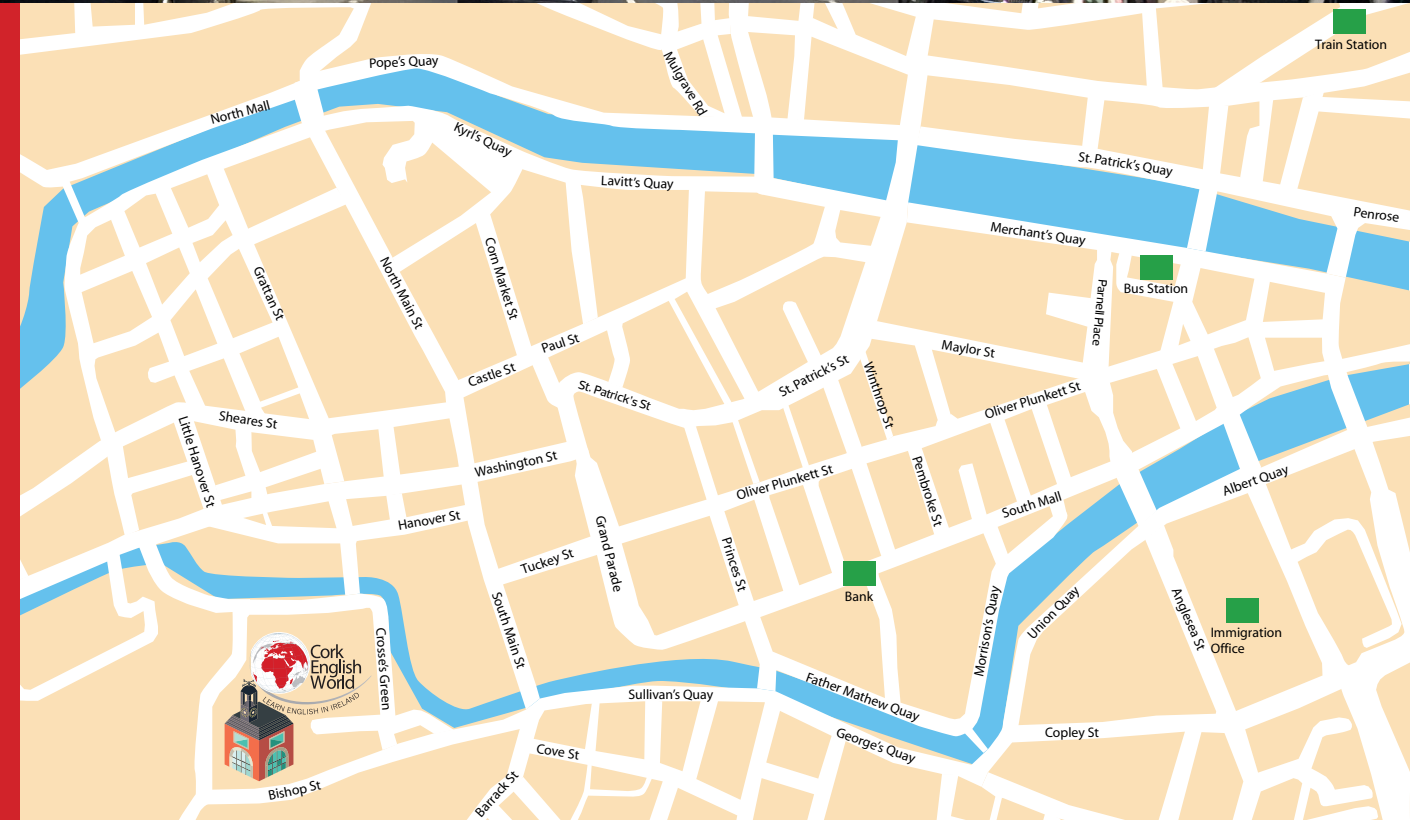
4. Staff & Testimonials
5. Teachers & Services
6. Nationalities & FAQs
7. English Level & Courses
8. English for Professionals
Academic Programme
9. Exam & Part-time Courses
10. Teacher Training & Social Programme
11. Apartments & Host Families



10

good reasons to choose
Cork and Cork English
World for your English
Language Courses

- ✓ Cork: "Small city, huge heart." Vibrant & dynamic city!
- ✓ Committed teachers & staff
- ✓ Quality courses recognized by ACELS/QQI
- ✓ 12 students maximum per class
- ✓ City centre location opposite
- ✓ Apartment accommodation beside the school
- ✓ Personal care and attention
- ✓ Best value for money in Cork
- ✓ 98% satisfied clients
- ✓ Erasmus +



LanguageCourse.net Book at worldwide lowest price at:
<https://www.languagecourse.net/school-cork-english-world-cork.php3>

+1 646 503 18 10	+44 330 124 03 17	+34 93 220 38 75	+33 1-78416974	+41 225 180 700	+49 221 162 56897	+43 720116182
+31 858880253	+7 4995000466	+46 844 68 36 76	+47 219 30 570	+45 898 83 996	+39 02-94751194	+48 223 988 072
	+81 345 895 399		+55 213 958 08 76	+86 19816218990		

STAFF

ADMINISTRATIVE STAFF



Majellia Sheehan BA, RELSA TEFL, DELTA (Cambridge) is a Director of CEW. She has been working in the ELT industry since 1990. Majellia has extensive ELT experience and has taught General & Business English to all levels. Majellia is responsible for the Academic Management of CEW. She is a trained Cambridge & IELTS examiner.

Mireille Kingston MA, MIATI is a Director of CEW. Among her many duties, Mireille oversees the financial aspects of CEW. Mireille has been involved in the management of ELT schools since 2000 and brings a wealth of practical knowledge to CEW.



Paul Sheehan B.Sc.(Hons), H.Dip. TLHE, CELT holds a Science degree and a post graduate diploma in Teaching and Learning in higher education. He is qualified to teach English as a foreign language. Paul is responsible for the development and maintenance of documented quality procedures whilst also overseeing the marketing department at CEW. Paul teaches classes from time to time ensuring the utmost quality of service all the time.



HERE'S WHAT OUR STUDENTS SAY ABOUT US...

"There are a thousand ways to say what you think and feel, there is only one way to say thanks. Thank you CEW!"

Graciano, Brazil

"The teachers were well-educated and very nice and kind. I think the school is good and the staff are friendly. The atmosphere in this school is so comfortable."

Lolah, Saudi Arabia

"Thanks to the different teachers (each of them with specific style and methods), my very intensive program (about 9 hours course in a day...) never was boring or tiring! I enjoyed these 2 weeks a lot!!"

Francois, France

"All the teachers were kind and helped me. Facilities are very clean and useful. CEW is very helpful and they are like my family."

Yhunju, South Korea

"I like a lot the school atmosphere and the teachers. It was a really good experience and you learn a lot and you meet new people. I will never forget this experience."

Javier, Spain

"CEW is a brilliant and dynamic school, it offers an excellent service thanks to the high level of professionalism of the teachers."

Riccardo, Italy

"I've never seen such a kind staff! You can improve your English with amazing school mates and staff in the best educational environment."

Itsuki, Japan



4

TEACHERS & SERVICES

TEACHING STAFF

CEW teachers are interested in their students' progress and actively advise students on the best learning strategies. Regular attendance at professional development conferences ensures that all trainers and tutors are kept at the cutting edge of methodologies and approaches to English Language Teaching. All CEW trainers meet the following requirements:

- University Graduates
- ELT qualification (Cambridge DELTA, CELTA or CELT)
- Minimum 2 years experience
- Professional Development



SERVICES



Accommodation

Students can book accommodation through CEW.



Laptops

Students can study and access the internet on CEW laptops. Free Wi-Fi.



Free Classes

Students can attend free classes every week.



Free Excursions

Students can enjoy free excursions on Public Holidays.



Immigration registration

Visa requiring students will be given a letter from CEW for immigration in order to obtain their Garda National Immigration Bureau card (GNIB).



Patio

Students can relax in our patio.



Bank Account

If students wish to open a bank account, CEW provides the relevant paperwork.



Learner Protection

Secure booking.



Canteen

Students can bring their lunch and have it in the canteen area.



Insurance

European students should bring their EHIC (European Health Insurance Card). This gives free access to emergency hospital care - visits to doctors are either free or can be reimbursed. CEW can organize medical insurance for students from outside the EU.



5

LanguageCourse^{net} Book at worldwide lowest price at:

<https://www.languagecourse.net/school-cork-english-world-cork.php3>

+1 646 503 18 10
+31 858880253

+44 330 124 03 17
+7 4995000466

+34 93 220 38 75
+46 844 68 36 76
+81 345 895 399

+33 1-78416974
+47 219 30 570
+55 213 958 08 76

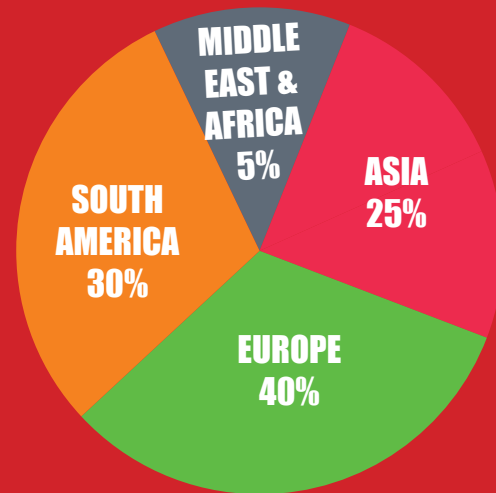
+41 225 180 700
+45 898 83 996
+86 19816218990

+49 221 162 56897
+39 02-94751194

+43 720116182
+48 223 988 072

NATIONALITIES & FAQs

NATIONALITIES



"I would recommend CEW because there's a good balance between sharing experience, getting new ideas, learning about Irish culture and tradition and wonderful teachers!" Neli, Bulgaria

FREQUENTLY ASKED QUESTIONS

Q. How do I get to CEW?

From Cork Airport you can get a bus (www.buseireann.ie) or a taxi. The journey time is approximately 20 minutes. The school is within walking distance of the city centre, bus or train station. From Dublin Airport - you can get a bus (www.aircoach.ie) or a train (www.irishrail.ie). The journey time is approximately 3.5 hours.



Q. Will I complete a test on my first day?

Yes, you will complete a test before you are assigned to a class appropriate to your level. The test is divided into 3 parts - speaking, writing and listening.



Q. Can I bring my lunch?

Yes, you can eat your lunch in the school. In addition, we offer some facilities (tea/coffee machines, cold drinks, snack machine and a fully equipped kitchen including fridge, toaster and microwave).



Q. Can I walk to the city centre?

Yes, the school is a five minute walk from the city centre. Each student has a map of Cork city in the information pack they receive on the first day. This map identifies the location of the school and the facilities nearby.



Q. Can I print my boarding pass?

Yes, we offer printing facilities for students.



Q. Will I get help with my curriculum vitae (CV)?

Yes, we will help you complete your CV while you are attending the school.



Q. Will I have progress meetings?

Your progress will be monitored by weekly class tests and progress meetings with the Academic Co-ordinator.



Q. Will I receive an information pack?

Students will receive a welcome pack on their first day and will also attend an information session.



Q. When is the school closed?

The school is closed on the following dates: January 1, March 17, Easter Monday, 1st Monday in May, 1st Monday in June, 1st Monday in August, last Monday in October and 3 weeks at Christmas.



Q. What is the public transport system in Cork?

The city is serviced by a network of public buses.



6

ENGLISH LEVEL & COURSES

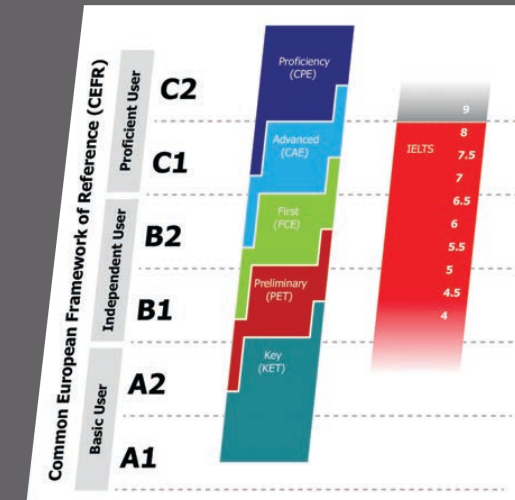
YOUR ENGLISH LEVEL

On your first day of tuition, you will do a short 3-part Placement Test (Speaking, Listening and Writing) in order to assess your level of English.

You are then assigned to the appropriate class. Courses are held at all levels from A1 to C2.

The Common European Framework of Reference for Languages (CEFR) was prepared by the Council of Europe as a way of standardizing the levels of language exams in different regions.

All recognized exams are mapped to the CEFR.



GENERAL ENGLISH

CEW Courses are designed to provide students with the language skills needed to communicate effectively and confidently in English. Our courses also provide students with the skills and strategies necessary for learning English outside the classroom. Our General English courses are available all year round and are multinational.

- 6-8 students on average per class (max 12)
- 60 minute lessons
- Dynamic and varied lessons with interactive classroom activities
- Weekly class tests to assess student performance
- Weekly questionnaires to assess student satisfaction
- End of course certificate

Students can enrol for any number of weeks with a minimum stay of 1 week. Courses are of 15 or 20 hours per week, which allows time for private study and afternoon activities. 24 hour courses are designed for students who wish to follow a more intensive English course.

GE15 15 Hours per week 09:00-12:15

GE20 20 Hours per week 09:00-13:15

GE24 24 Hours per week 09:00-13:15 & 14:15-16:15 Mon & Wed



7

LanguageCourse.net Book at worldwide lowest price at:

<https://www.languagecourse.net/school-cork-english-world-cork.php3>

+1 646 503 18 10
+31 858880253

+44 330 124 03 17
+7 4995000466

+34 93 220 38 75
+46 844 68 36 76

+33 1-78416974
+47 219 30 570

+41 225 180 700
+45 898 83 996

+49 221 162 56897
+39 02-94751194

+43 720116182
+48 223 988 072

+81 345 895 399
+55 213 958 08 76

+86 19816218990

ENGLISH FOR PROFESSIONALS & ACADEMIC PROGRAMME

ENGLISH FOR PROFESSIONALS

Students can choose between a Combination Course or Private Tuition. All clients are accompanied by a CEW tutor for lunch.

Combination Courses (General English group classes in the morning, lunch with a tutor and afternoon one-to-one lessons) are ideal for business clients who wish to study both General English and English for a Specific Purpose.

Private Tuition Courses are suitable for Business clients. They are intensive and are designed to achieve maximum benefit in a short period of time.



BULATS

Our Academic Manager closely monitors the progress of the students by communicating with the tutors on a daily basis. In addition, students attend scheduled progress meetings every 5 weeks.

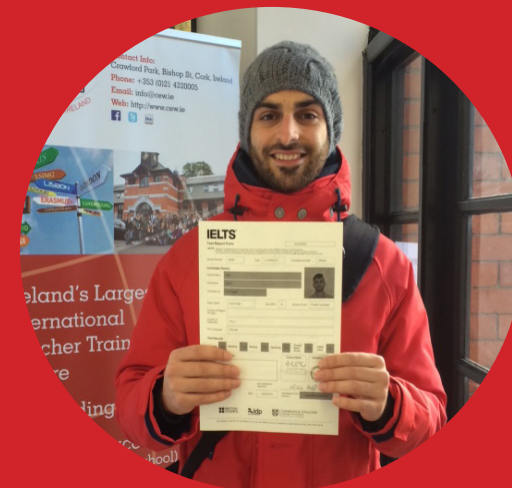
Components of the Course can include:

- International Business Vocabulary
- Simulated Business Situations
- Language of Meetings and Negotiations
- Telephone Skills
- Presentations
- Case Studies
- Role plays
- Guest speakers on request

ACADEMIC PROGRAMME (Work and Study - 25 weeks)

This programme is especially suited to visa-requiring students who want to work while studying in Ireland. Students are registered as full time students and are entitled to work up to 20 hours per week during their study period.

- Students on this programme will obtain a visa for 8 months
- Students will attend a combination of General English and Exam Preparation Classes (IELTS, FCE, CAE)
- Students will do an internationally recognised exam (IELTS, FCE, CAE)



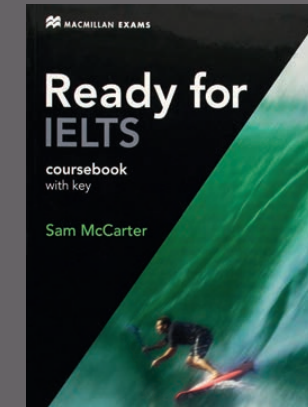
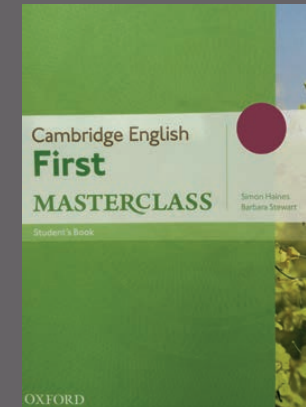
"Thank you for the quality of the course, I am more than happy with my IELTS score. Each student matters to you and that's what makes CEW different."
Sirio, Italy



8

EXAM & PART-TIME COURSES

EXAM PREPARATION COURSES



Cork English World offers Exam Preparation Courses for IELTS and Cambridge Exams (FCE & CAE). These exams are recognized by employers and universities worldwide and give students the opportunity to formalize their English language training.

CEW Exam Courses are designed to provide students with the language skills and examination skills needed to succeed in their chosen examination.

Majellia Sheehan, the Director of CEW, is an experienced Cambridge examiner and is available for advice, tips and exam practice. This is a very valuable advantage to CEW students.



PART-TIME COURSES

These courses are specifically designed for non-native speakers of English living and working in Ireland. They give the learner the opportunity to expand their vocabulary and develop their fluency and accuracy in a written and spoken context. They also help to develop the learner's ability to communicate effectively in a social setting or work environment.

AFTERNOON CLASSES

General English
Monday & Wednesday 14:15-16:15
Business English
Monday to Friday 14:15-16:15

EVENING CLASSES

General English
Tuesday & Thursday 18:30-20:30
Exam Classes (IELTS, FCE, CAE)
Tuesday & Thursday 18:30-20:30



"Cork English World helps you improve your English very quickly in an excellent and nice atmosphere." Thi Hong, France



9

LanguageCourse.net Book at worldwide lowest price at:
<https://www.languagecourse.net/school-cork-english-world-cork.php3>

+1 646 503 18 10
+31 858880253

+44 330 124 03 17
+7 4995000466

+34 93 220 38 75
+46 844 68 36 76
+81 345 895 399

+33 1-78416974
+47 219 30 570
+55 213 958 08 76

+41 225 180 700
+45 898 83 996
+86 19816218990

+49 221 162 56897
+39 02-94751194

+43 720116182
+48 223 988 072

TEACHER TRAINING & SOCIAL PROGRAMME

TEACHER TRAINING

- Our teacher training courses are eligible for funding (Erasmus+ KA1)
- One week or two week courses available
- Courses focus on task based language training sessions and Irish culture. These sessions aim to develop the fluency and accuracy of the course participants
- Courses can also be arranged for closed groups throughout the year
- PIC number 949053336



Copyright Michael Holland



All Teacher Training courses are eligible for European funding. Check www.ec.europa.eu/programmes/erasmus-plus for more information about grant applications & deadlines.

SOCIAL PROGRAMME

The social programme is designed to help the students feel welcome in Cork and experience the Irish culture, make international friends and speak English all the time!

The programme changes every week and includes:

- Orientation tour of Cork City
- Free weekly conversation class
- Half-day excursions to Blarney, Cobh & Kinsale
- Visits to Cork City Gaol, Cork Vision Centre
- Greyhound racing
- Pub evenings with Traditional Irish Music and Dance
- Full-day excursions to The Ring of Kerry, West Cork & East Cork



10

APARTMENTS & HOST FAMILIES

APARTMENTS

All Apartments are within walking distance of the school/city centre. Minimum booking 2 weeks.

Apartment Accommodation includes:

- Single/Double Room in a shared apartment/house
- Shared kitchen/dining/living area
- Private or shared bathroom facilities
- Bed linen (no towels)
- Laundry facilities



"I stayed at DeansHall Apartments. The location is fantastic, so close to the school and the city centre!" Elena, Italy



HOST FAMILIES

CEW's host families are very carefully selected to ensure a relaxing and comfortable stay. Living with a family is a good way to practice your English outside the school and experience Irish life and culture.

Host Family Accommodation includes:

- Cork airport/bus station/train station collection
- Half board (breakfast and evening meal)
- Wi-fi
- Close proximity to bus stop
- Full immersion in Irish way of life



11

LanguageCourse net Book at worldwide lowest price at:
<https://www.languagecourse.net/school-cork-english-world-cork.php3>

+1 646 503 18 10	+44 330 124 03 17	+34 93 220 38 75	+33 1-78416974	+41 225 180 700	+49 221 162 56897	+43 720116182
+31 858880253	+7 4995000466	+46 844 68 36 76	+47 219 30 570	+45 898 83 996	+39 02-94751194	+48 223 988 072
+81 345 895 399		+55 213 958 08 76	+86 19816218990			

Learn English in Ireland



LanguageCourse^{net}

Book at worldwide lowest price at:

<https://www.languagecourse.net/school-cork-english-world-cork.php3>

🇺🇸 +1 646 503 18 10
🇧🇷 +31 858880253

🇬🇧 +44 330 124 03 17
🇩🇪 +7 4995000466

🇪🇸 +34 93 220 38 75
🇫🇮 +46 844 68 36 76
🇮🇹 +81 345 895 399

🇫🇷 +33 1-78416974
🇩🇪 +47 219 30 570
🇧🇷 +55 213 958 08 76

🇨🇦 +41 225 180 700
🇩🇪 +45 898 83 996
🇨🇦 +86 19816218990

🇩🇪 +49 221 162 56897
🇮🇹 +39 02-94751194

🇮🇷 +43 720116182
🇮🇷 +48 223 988 072