



ELS OFFICIAL PRICE LIST 2024

INFORMATION CORRECT AT TIME OF PUBLICATION
AND SUBJECT TO CHANGE WITHOUT NOTICE.

CURRENT AS OF OCTOBER 6, 2023

Book at worldwide lowest price at:
<https://www.languagecourse.net/school-els-tampa.php3>

+1 646 503 18 10
 +31 858880253

+44 330 124 03 17
 +7 4995000466

+34 93 220 38 75
 +46 844 68 36 76
 +81 345 895 399

+33 1-78416974
 +47 219 30 570
 +55 213 958 08 76

+41 225 180 700
 +45 898 83 996
 +86 19816218990

+49 221 162 56897
 +39 02-94751194

+43 720116182
 +48 223 988 072

ELS LANGUAGE CENTERS

2024 PRICES, DATES & TERMS AND CONDITIONS

WHY CHOOSE ELS	3
OUR CAMPUSES ON THE MAP	4
CHICAGO, IL on the campus of Dominican University	5
CINCINNATI, OH on the campus of University of Cincinnati	6
CLEVELAND, OH on the campus of Case Western Reserve University	7
HOUSTON, TX on the campus of University of St. Thomas - Houston	8
LOS ANGELES COUNTY, CA on the campus of University of La Verne	9
MELBOURNE, FL on the campus of Florida Institute of Technology	10
NASHVILLE, TN on the campus of Middle Tennessee State University	11
NEW YORK CITY, NY on the campus of New York Institute of Technology	12
PHILADELPHIA, PA on the campus of Saint Joseph's University	13
SAN FRANCISCO, NORTH BAY, CA on the campus of Dominican University of California	14
ST. PAUL, MN on the campus of University of St. Thomas - Minnesota	15
ST. PETERSBURG, FL on the campus of Eckerd College	16
TAMPA, FL on the campus of University of Tampa	17
ILSC HELLO ONLINE ENGLISH	18
START DATES	19
TERMS AND CONDITIONS	20

★ ABOUT OUR TUITION PRICES AND FEES

Tuition prices and most fees are the same for each center.
Housing and airport pick-up prices will vary by study destination.
Access the digital brochure [here](#).



Book at worldwide lowest price at:
<https://www.languagecourse.net/school-els-tampa.php3>

+1 646 503 18 10
 +31 858880253

+44 330 124 03 17
 +7 4995000466

+34 93 220 38 75
 +46 844 68 36 76
 +81 345 895 399

+33 1-78416974
 +47 219 30 570
 +55 213 958 08 76

+41 225 180 700
 +45 898 83 996
 +86 19816218990

+49 221 162 56897
 +39 02-94751194

+43 720116182
 +48 223 988 072

OVER 1.2 MILLION STUDENTS HAVE CHOSEN ELS...

HERE'S WHY!



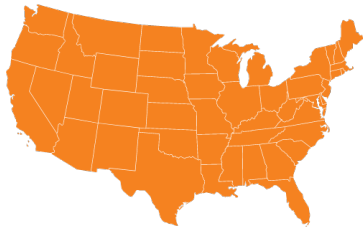
ACADEMIC EXCELLENCE

- The most effective way to prepare for career and academic success.
- Over 600 university and college partners across the USA accept ELS as proof of English proficiency.
- A teaching methodology that works – over 40,000 students have matriculated to university.
- More than 1.2 million students from over 140 countries have learned English with ELS.



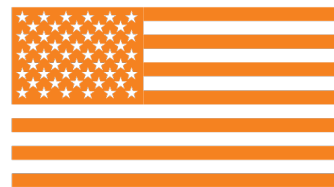
SUPPORTIVE AND SAFE

- Academic advice and assistance in applying to university.
- Teaching staff that support you every step of the way.
- Safe, supportive learning environments.



ACADEMIC EXCELLENCE

- 13 unique locations across the USA.
- University campus-based options.
- Experience the diverse landscapes and cultures that America has to offer.



ACADEMIC EXCELLENCE

- Full English language immersion from arrival day.
- Discover an American University experience at our campus-based centers.



LanguageCourse^{net} Book at worldwide lowest price at:
<https://www.languagecourse.net/school-els-tampa.php3>

+1 646 503 18 10
 +31 858880253

+44 330 124 03 17
 +7 4995000466

+34 93 220 38 75
 +46 844 68 36 76
 +81 345 895 399

+33 1-78416974
 +47 219 30 570
 +55 213 958 08 76

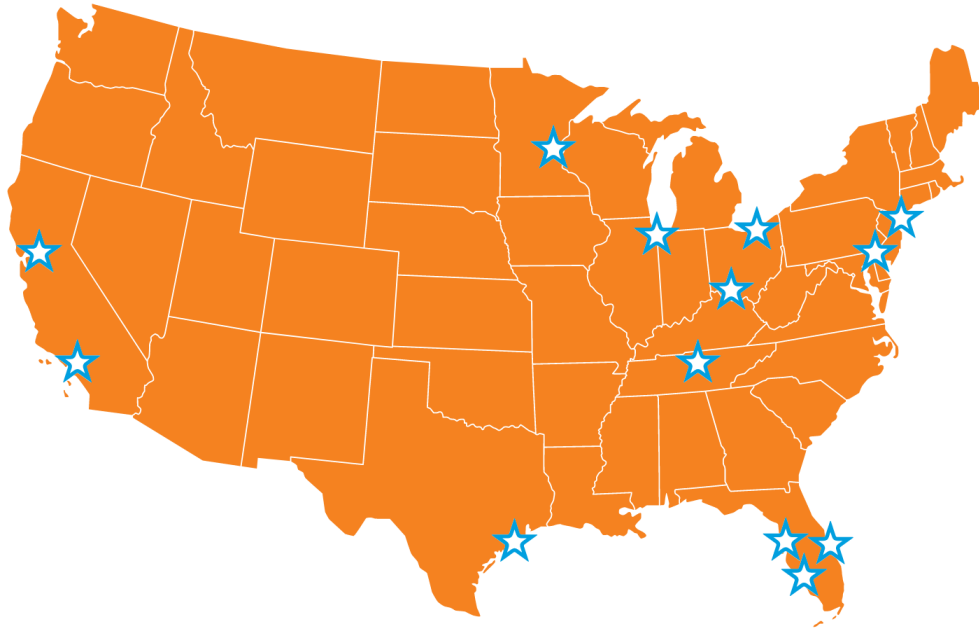
+41 225 180 700
 +45 898 83 996
 +86 19816218990

+49 221 162 56897
 +39 02-94751194

+43 720116182
 +48 223 988 072

AMAZING AMERICAN DESTINATIONS

CHOOSE FROM 13 ON-CAMPUS LOCATIONS



ELS CHICAGO

on the campus of Dominican University

ELS CINCINNATI

on the campus of University of Cincinnati

ELS CLEVELAND

on the campus of Case Western Reserve University

ELS HOUSTON

affiliated with University of St. Thomas - Houston

ELS LA VERNE

on the campus of University of La Verne

ELS MELBOURNE

on the campus of Florida Institute of Technology

ELS NASHVILLE

on the campus of Middle Tennessee State University

ELS N.Y. , MANHATTAN

on the campus of New York Institute of Technology

ELS PHILADELPHIA

on the campus of St. Joseph University

ELS SAN RAFAEL

on the campus of Dominican University of California

ELS ST. PAUL

on the campus of University of St. Thomas - Minnesota

ELS ST. PETERSBURG

on the campus of Eckerd College

ELS TAMPA

on the campus of The University of Tampa



Book at worldwide lowest price at:
<https://www.languagecourse.net/school-els-tampa.php3>

+1 646 503 18 10
 +31 858880253

+44 330 124 03 17
 +7 4995000466

+34 93 220 38 75
 +46 844 68 36 76
 +81 345 895 399

+33 1-78416974
 +47 219 30 570
 +55 213 958 08 76

+41 225 180 700
 +45 898 83 996
 +86 19816218990

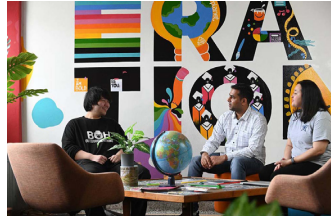
+49 221 162 56897
 +39 02-94751194

+43 720116182
 +48 223 988 072

ELS CHICAGO

on the campus of **DOMINICAN UNIVERSITY**

in Chicago,
Illinois



WHY CHOOSE CHICAGO?

- ELS Chicago is located on the scenic campus of Dominican University, minutes away from downtown Chicago with access to the city's many arts, entertainment, dining and shopping offerings. Combine fast-paced city life in Chicago with safe suburban life in River Forest, Illinois.
- Dominican University is highly regarded for its academic rigor, affordability, and values-based, relationship-centered learning environment - it is ranked #15 overall in the Midwest, while in Illinois it is ranked #1 best value, #1 social mobility, and #1 best undergraduate teaching.
- When not in the classroom, students have the opportunity to visit museums, attend a sporting event, visit beautiful Millennium Park, or enjoy Chicago's vibrant music, theatre, arts, architecture, and iconic neighborhoods - don't forget to try Chicago deep-dish pizza while you're there!

VALIDITY PERIODS FOR TUITION, HOUSING, & GENERAL FEES:

- Tuition and general fees valid for all new applications received after January 1, 2024.
- Homestay fees are valid for applications received after Oct 1, 2023 for arrivals in 2024, but are subject to change at any time. On and off campus student residence fees are valid for applications received after Oct 1, 2023 for arrivals from Oct 1, 2023 until the end of 2024, but are subject to change at any time.

GENERAL FEES

Application Fee <i>(Applies to all programs, one-time, non refundable)</i>	\$180.00
Materials & Technology Fee <i>(per week)</i>	\$27.50
Student Health Insurance <i>(per week)</i>	\$50.00
Facility Fee <i>(per week)</i>	\$20.00
Airport Pickup Fee <i>(One Way)</i> ORD - Chicago O'Hare International Airport <i>(Optional. Available to all students for an additional fee.)</i>	\$175.00

HOUSING PRICES PER WEEK

Homestay <i>(per week)</i> 14 meals per week (breakfast and dinner)	\$370
Chicago Student Residence Off Campus <i>(per week)</i> Double occupancy - minimum booking 4 weeks	\$375

ELS may use carefully selected partners to house students with suitable Homestay providers.

TUITION FEES PER WEEK

	1-11 Weeks	12-23 Weeks	24+ Weeks
Intensive English <i>(30 lessons per week)</i>	\$550	\$515	\$485
Semi-Intensive English <i>(20 lessons per week)</i>	\$425	\$400	\$375
American Explorer <i>(15 lessons per week)</i>	\$410	\$385	—

The American Explorer program is available for registrations up to a maximum of 12 weeks.

TUITION FEES

<i>(multiweek package fees)</i>	4 Weeks	8 Weeks	12 weeks	16 weeks	20 weeks	24 weeks	28 weeks	32 weeks	36 weeks	40 weeks	44 weeks	48 weeks
Intensive English <i>(30 lessons per week)</i>	\$2,200	\$4,400	\$6,180	\$8,240	\$10,300	\$11,640	\$13,580	\$15,520	\$17,460	\$19,400	\$21,340	\$23,280
Semi-Intensive English <i>(20 lessons per week)</i>	\$1,700	\$3,400	\$4,800	\$6,400	\$8,000	\$9,000	\$10,500	\$12,000	\$13,500	\$15,000	\$16,500	\$18,000
American Explorer <i>(15 lessons per week)</i>	\$1,640	\$3,280	\$4,620	—	—	—	—	—	—	—	—	—

SESSION START DATES

January 8, February 5, March 4, April 1, April 29, May 28, June 24,

July 22, August 19, September 16, October 14, November 11, December 9

While all programs run in 4-week sessions, students can start on any Monday year-round (Tuesday if Monday is a public holiday). For the best experience we encourage students to start at the beginning of a session where possible and not to start on week four of the session.



LanguageCourse^{net} Book at worldwide lowest price at:
<https://www.languagecourse.net/school-els-tampa.php3>

🇺🇸 +1 646 503 18 10

🇬🇧 +44 330 124 03 17

🇪🇸 +34 93 220 38 75

🇫🇷 +33 1-78416974

🇨🇭 +41 225 180 700

🇩🇪 +49 221 162 56897

🇮🇹 +43 720116182

🇵🇷 +31 858880253

🇳🇱 +7 4995000466

🇳🇪 +46 844 68 36 76

🇳🇴 +47 219 30 570

🇩🇰 +45 898 83 996

🇮🇹 +39 02-94751194

🇵🇷 +48 223 988 072

🇵🇰 +81 345 895 399

🇧🇷 +55 213 958 08 76

🇷🇺 +86 19816218990

ELS CINCINNATI

on the campus of **UNIVERSITY OF CINCINNATI**

in
Cincinnati,
Ohio



WHY CHOOSE CINCINNATI?

- ELS Cincinnati is located on the campus of University of Cincinnati in the Uptown area of Cincinnati, Ohio within walking distance of housing, restaurants, shopping plazas and public transportation.
- The University of Cincinnati is ranked #151 in national universities and is also ranked as one of America's top 25 public research universities by the National Science Foundation.
- When not in the classroom, students have the opportunity to visit museums, attend a sporting event, or take a walk through the many parks in the city!

VALIDITY PERIODS FOR TUITION, HOUSING, & GENERAL FEES:

- Tuition and general fees valid for all new applications received after January 1, 2024.
- Homestay fees are valid for applications received after Oct 1, 2023 for arrivals in 2024, but are subject to change at any time. On and off campus student residence fees are valid for applications received after Oct 1, 2023 for arrivals from Oct 1, 2023 until the end of 2024, but are subject to change at any time.

GENERAL FEES

Application Fee <i>(Applies to all programs, one-time, non refundable)</i>	\$180.00
Materials & Technology Fee <i>(per week)</i>	\$27.50
Student Health Insurance <i>(per week)</i>	\$50.00
Facility Fee <i>(per week)</i>	\$20.00
Airport Pickup Fee <i>(One Way)</i> CVG - Cincinnati/Northern Kentucky International Airport <i>(Optional. Available to all students for an additional fee.)</i>	\$165.00

HOUSING PRICES PER WEEK

Homestay <i>(per week)</i> 14 meals per week (breakfast and dinner)	\$335
UC Campus Residences On Campus <i>(per week)</i> Single and double occupancy - based on availability	\$385

ELS may use carefully selected partners to house students with suitable Homestay providers.

TUITION FEES PER WEEK

	1-11 Weeks	12-23 Weeks	24+ Weeks
Intensive English <i>(30 lessons per week)</i>	\$550	\$515	\$485
Semi-Intensive English <i>(20 lessons per week)</i>	\$425	\$400	\$375
American Explorer <i>(15 lessons per week)</i>	\$410	\$385	—

The American Explorer program is available for registrations up to a maximum of 12 weeks.

TUITION FEES

<i>(multiweek package fees)</i>	4 Weeks	8 Weeks	12 weeks	16 weeks	20 weeks	24 weeks	28 weeks	32 weeks	36 weeks	40 weeks	44 weeks	48 weeks
Intensive English <i>(30 lessons per week)</i>	\$2,200	\$4,400	\$6,180	\$8,240	\$10,300	\$11,640	\$13,580	\$15,520	\$17,460	\$19,400	\$21,340	\$23,280
Semi-Intensive English <i>(20 lessons per week)</i>	\$1,700	\$3,400	\$4,800	\$6,400	\$8,000	\$9,000	\$10,500	\$12,000	\$13,500	\$15,000	\$16,500	\$18,000
American Explorer <i>(15 lessons per week)</i>	\$1,640	\$3,280	\$4,620	—	—	—	—	—	—	—	—	—

SESSION START DATES

January 2, January 29, February 26, March 25, April 22, May 20, June 17, July 15, August 12, September 9, October 7, November 4, December 2

While all programs run in 4-week sessions, students can start on any Monday year-round (Tuesday if Monday is a public holiday). For the best experience we encourage students to start at the beginning of a session where possible and not to start on week four of the session.



LanguageCourse^{net} Book at worldwide lowest price at:
<https://www.languagecourse.net/school-els-tampa.php3>

🇺🇸 +1 646 503 18 10
🇧🇷 +31 858880253

🇩🇪 +44 330 124 03 17
🇫🇷 +7 4995000466

🇪🇸 +34 93 220 38 75
🇮🇹 +46 844 68 36 76
🇯🇵 +81 345 895 399

🇩🇪 +33 1-78416974
🇩🇪 +47 219 30 570
🇩🇪 +55 213 958 08 76

🇨🇦 +41 225 180 700
🇩🇪 +45 898 83 996
🇨🇦 +86 19816218990

🇩🇪 +49 221 162 56897
🇮🇹 +39 02-94751194

🇩🇪 +43 720116182
🇩🇪 +48 223 988 072

ELS CLEVELAND

on the campus of **CASE WESTERN RESERVE UNIVERSITY**

in
Cleveland,
Ohio



WHY CHOOSE CLEVELAND?

- ELS Cleveland is located on the campus of the prestigious Case Western Reserve University in Cleveland, Ohio, just a short trip to local attractions including the Rock and Roll Hall of Fame, entertainment districts, restaurants and parks.
- Case Western Reserve University is a Top 50 ranked university. This private university is known for its world class research, with top-rated graduate programs in international law, health law, biomedical engineering and nonprofit management. ELS students have access to a host of campus facilities, including a gymnasium, health center, library, sports courts, and indoor pool.
- The ELS Cleveland center is within walking distance of many restaurants and coffee shops. Get to know the friendly people of Northeast Ohio at local theaters, shows, and sporting events offered around this city center!

VALIDITY PERIODS FOR TUITION, HOUSING, & GENERAL FEES:

- Tuition and general fees valid for all new applications received after January 1, 2024.
- Homestay fees are valid for applications received after Oct 1, 2023 for arrivals in 2024, but are subject to change at any time. On and off campus student residence fees are valid for applications received after Oct 1, 2023 for arrivals from Oct 1, 2023 until the end of 2024, but are subject to change at any time.

GENERAL FEES

Application Fee <i>(Applies to all programs, one-time, non refundable)</i>	\$180.00
Materials & Technology Fee <i>(per week)</i>	\$27.50
Student Health Insurance <i>(per week)</i>	\$50.00
Facility Fee <i>(per week)</i>	\$20.00
Airport Pickup Fee <i>(One Way)</i> CLE - Cleveland Hopkins International Airport <i>(Optional. Available to all students for an additional fee.)</i>	\$150.00

HOUSING PRICES PER WEEK

Cleveland Student Residence Off Campus <i>(per week)</i> <i>Single occupancy</i>	\$325
--	--------------

TUITION FEES PER WEEK

	1-11 Weeks	12-23 Weeks	24+ Weeks
Intensive English <i>(30 lessons per week)</i>	\$550	\$515	\$485
Semi-Intensive English <i>(20 lessons per week)</i>	\$425	\$400	\$375
American Explorer <i>(15 lessons per week)</i>	\$410	\$385	—

The American Explorer program is available for registrations up to a maximum of 12 weeks.

TUITION FEES

<i>(multiweek package fees)</i>	4 Weeks	8 Weeks	12 weeks	16 weeks	20 weeks	24 weeks	28 weeks	32 weeks	36 weeks	40 weeks	44 weeks	48 weeks
Intensive English <i>(30 lessons per week)</i>	\$2,200	\$4,400	\$6,180	\$8,240	\$10,300	\$11,640	\$13,580	\$15,520	\$17,460	\$19,400	\$21,340	\$23,280
Semi-Intensive English <i>(20 lessons per week)</i>	\$1,700	\$3,400	\$4,800	\$6,400	\$8,000	\$9,000	\$10,500	\$12,000	\$13,500	\$15,000	\$16,500	\$18,000
American Explorer <i>(15 lessons per week)</i>	\$1,640	\$3,280	\$4,620	—	—	—	—	—	—	—	—	—

SESSION START DATES

January 2, January 29, February 26, March 25, April 22, May 20, June 17, July 15, August 12, September 9, October 7, November 4, December 2

While all programs run in 4-week sessions, students can start on any Monday year-round (Tuesday if Monday is a public holiday). For the best experience we encourage students to start at the beginning of a session where possible and not to start on week four of the session.



LanguageCourse^{net} Book at worldwide lowest price at:
<https://www.languagecourse.net/school-els-tampa.php3>

🇺🇸 +1 646 503 18 10
🇧🇷 +31 858880253

🇬🇧 +44 330 124 03 17
🇩🇪 +7 4995000466

🇪🇸 +34 93 220 38 75
🇫🇷 +46 844 68 36 76
🇮🇹 +81 345 895 399

🇩🇪 +33 1-78416974
🇩🇪 +47 219 30 570
🇩🇪 +55 213 958 08 76

🇨🇦 +41 225 180 700
🇩🇪 +45 898 83 996
🇨🇦 +86 19816218990

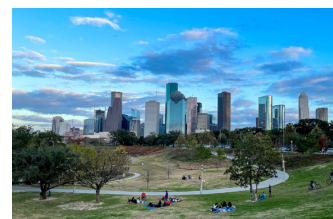
🇩🇪 +49 221 162 56897
🇮🇹 +39 02-94751194

🇩🇪 +43 720116182
🇩🇪 +48 223 988 072

ELS HOUSTON

affiliated with **UNIVERSITY OF ST. THOMAS - HOUSTON**

in Houston,
Texas



WHY CHOOSE HOUSTON?

- ELS Houston is situated close to the University of St. Thomas - Houston. While not located on the campus, ELS students obtain a student ID card, enjoy access to campus facilities, including athletic, library and dining facilities.
- Get a real glimpse of Southern hospitality when you learn in America's fourth largest city. Houston is a cosmopolitan melting pot that is known for its cultural diversity. It is filled with world-class dining - plus art, shopping, a museum district, and much more.
- Enjoy weekend visits to the NASA Space Center, the Gulf of Mexico beaches, and more. When you're not practicing your English while shopping, dining, or enjoying outdoor festivals, there's plenty more in Houston for you to experience!

VALIDITY PERIODS FOR TUITION, HOUSING, & GENERAL FEES:

- Tuition and general fees valid for all new applications received after January 1, 2024.
- Homestay fees are valid for applications received after Oct 1, 2023 for arrivals in 2024, but are subject to change at any time. On and off campus student residence fees are valid for applications received after Oct 1, 2023 for arrivals from Oct 1, 2023 until the end of 2024, but are subject to change at any time.

GENERAL FEES

Application Fee <i>(Applies to all programs, one-time, non refundable)</i>	\$180.00
Materials & Technology Fee <i>(per week)</i>	\$27.50
Student Health Insurance <i>(per week)</i>	\$50.00
Facility Fee <i>(per week)</i>	\$20.00
Airport Pickup Fee <i>(One Way)</i> HOU - William P. Hobby Airport OR IAH - George Bush Intercontinental Airport <i>(Optional. Available to all students for an additional fee)</i>	\$190.00

HOUSING PRICES PER WEEK

Homestay <i>(per week)</i> <i>14 meals per week (breakfast and dinner)</i>	\$370
Houston Student Residence Off Campus <i>(per week)</i> <i>Double occupancy</i>	\$290

ELS may use carefully selected partners to house students with suitable Homestay providers.

TUITION FEES PER WEEK

	1-11 Weeks	12-23 Weeks	24+ Weeks
Intensive English <i>(30 lessons per week)</i>	\$550	\$515	\$485
Semi-Intensive English <i>(20 lessons per week)</i>	\$425	\$400	\$375
American Explorer <i>(15 lessons per week)</i>	\$410	\$385	—

The American Explorer program is available for registrations up to a maximum of 12 weeks.

TUITION FEES <i>(multiweek package fees)</i>	4 Weeks	8 Weeks	12 weeks	16 weeks	20 weeks	24 weeks	28 weeks	32 weeks	36 weeks	40 weeks	44 weeks	48 weeks
Intensive English <i>(30 lessons per week)</i>	\$2,200	\$4,400	\$6,180	\$8,240	\$10,300	\$11,640	\$13,580	\$15,520	\$17,460	\$19,400	\$21,340	\$23,280
Semi-Intensive English <i>(20 lessons per week)</i>	\$1,700	\$3,400	\$4,800	\$6,400	\$8,000	\$9,000	\$10,500	\$12,000	\$13,500	\$15,000	\$16,500	\$18,000
American Explorer <i>(15 lessons per week)</i>	\$1,640	\$3,280	\$4,620	—	—	—	—	—	—	—	—	—

SESSION START DATES

January 2, January 29, February 26, March 25, April 22, May 20, June 17, July 15, August 12, September 9, October 7, November 4, December 2

While all programs run in 4-week sessions, students can start on any Monday year-round (Tuesday if Monday is a public holiday). For the best experience we encourage students to start at the beginning of a session where possible and not to start on week four of the session.



LanguageCourse^{net} Book at worldwide lowest price at:
<https://www.languagecourse.net/school-els-tampa.php3>

🇺🇸 +1 646 503 18 10
🇧🇷 +31 858880253

🇺🇸 +44 330 124 03 17
🇧🇷 +7 4995000466

🇪🇸 +34 93 220 38 75
🇮🇹 +46 844 68 36 76
🇮🇹 +81 345 895 399

🇫🇷 +33 1-78416974
🇩🇪 +47 219 30 570
🇧🇷 +55 213 958 08 76

🇨🇦 +41 225 180 700
🇩🇪 +45 898 83 996
🇨🇦 +86 19816218990

🇩🇪 +49 221 162 56897
🇮🇹 +39 02-94751194

🇮🇹 +43 720116182
🇮🇹 +48 223 988 072

ELS LOS ANGELES COUNTY

on the campus of UNIVERSITY OF LA VERNE

in La Verne, California



WHY CHOOSE LOS ANGELES COUNTY?

- ELS Los Angeles County is located on the beautiful campus of the University of La Verne in La Verne, California, only 1 hour from Los Angeles, featuring beaches, Disneyland, Hollywood, Universal Studios, Anaheim Stadium, and more.
- The private University of La Verne is ranked #151 in national universities boasting robust academic options that include 55 undergraduate programs, 19 master's degrees, four doctorates, and eight credential programs.
- With the San Gabriel Mountains as a backdrop to this picturesque city, you'll get to experience nature through the historic outdoor beauty while still living in a modern and contemporary city!

VALIDITY PERIODS FOR TUITION, HOUSING, & GENERAL FEES:

- Tuition and general fees valid for all new applications received after January 1, 2024.
- Homestay fees are valid for applications received after Oct 1, 2023 for arrivals in 2024, but are subject to change at any time. On and off campus student residence fees are valid for applications received after Oct 1, 2023 for arrivals from Oct 1, 2023 until the end of 2024, but are subject to change at any time.

GENERAL FEES

Application Fee <i>(Applies to all programs, one-time, non refundable)</i>	\$180.00
Materials & Technology Fee <i>(per week)</i>	\$27.50
Student Health Insurance <i>(per week)</i>	\$50.00
Facility Fee <i>(per week)</i>	\$20.00
Airport Pickup Fee <i>(One Way)</i> LAX - Los Angeles International Airport <i>(Optional. Available to all students for an additional fee)</i>	\$370.00

HOUSING PRICES PER WEEK

Homestay <i>(per week)</i> 14 meals per week (breakfast and dinner)	\$350
ULV Residence Halls On Campus <i>(per week)</i> Double occupancy; 7 meals per week included	\$475

ELS may use carefully selected partners to house students with suitable Homestay providers.

TUITION FEES PER WEEK

	1-11 Weeks	12-23 Weeks	24+ Weeks
Intensive English <i>(30 lessons per week)</i>	\$550	\$515	\$485
Semi-Intensive English <i>(20 lessons per week)</i>	\$425	\$400	\$375
American Explorer <i>(15 lessons per week)</i>	\$410	\$385	—

The American Explorer program is available for registrations up to a maximum of 12 weeks.

TUITION FEES

<i>(multiweek package fees)</i>	4 Weeks	8 Weeks	12 weeks	16 weeks	20 weeks	24 weeks	28 weeks	32 weeks	36 weeks	40 weeks	44 weeks	48 weeks
Intensive English <i>(30 lessons per week)</i>	\$2,200	\$4,400	\$6,180	\$8,240	\$10,300	\$11,640	\$13,580	\$15,520	\$17,460	\$19,400	\$21,340	\$23,280
Semi-Intensive English <i>(20 lessons per week)</i>	\$1,700	\$3,400	\$4,800	\$6,400	\$8,000	\$9,000	\$10,500	\$12,000	\$13,500	\$15,000	\$16,500	\$18,000
American Explorer <i>(15 lessons per week)</i>	\$1,640	\$3,280	\$4,620	—	—	—	—	—	—	—	—	—

SESSION START DATES

January 8, February 5, March 4, April 1, April 29, May 28, June 24,

July 22, August 19, September 16, October 14, November 11, December 9

While all programs run in 4-week sessions, students can start on any Monday year-round (Tuesday if Monday is a public holiday). For the best experience we encourage students to start at the beginning of a session where possible and not to start on week four of the session.



LanguageCourse^{net} Book at worldwide lowest price at:
<https://www.languagecourse.net/school-els-tampa.php3>

🇺🇸 +1 646 503 18 10
🇧🇷 +31 858880253

🇺🇸 +44 330 124 03 17
🇧🇷 +7 4995000466

🇪🇸 +34 93 220 38 75
🇮🇹 +46 844 68 36 76
🇯🇵 +81 345 895 399

🇫🇷 +33 1-78416974
🇩🇪 +47 219 30 570
🇨🇦 +55 213 958 08 76

🇨🇭 +41 225 180 700
🇩🇰 +45 898 83 996
🇨🇷 +86 19816218990

🇩🇪 +49 221 162 56897
🇮🇹 +39 02-94751194

🇪🇸 +43 720116182
🇺🇸 +48 223 988 072

ELS MELBOURNE

on the campus of **FLORIDA INSTITUTE OF TECHNOLOGY**

in
Melbourne,
Florida



WHY CHOOSE MELBOURNE?

- ELS Melbourne is located on the Florida Institute of Technology campus in sunny Melbourne, Florida, one of the most beautiful campuses in the USA.
- Florida Institute of Technology is a dynamic, Tier 1 ranked university and research institute on Central Florida's innovative space coast.
- Get a unique opportunity to learn English while being immersed in technology and innovation at ELS Melbourne on Central Florida's innovative Space Coast. While in Melbourne, soak up the sun and immerse yourself in some adventurous outdoor activities that you can't experience anywhere else!

VALIDITY PERIODS FOR TUITION, HOUSING, & GENERAL FEES:

- Tuition and general fees valid for all new applications received after January 1, 2024.
- Homestay fees are valid for applications received after Oct 1, 2023 for arrivals in 2024, but are subject to change at any time. On and off campus student residence fees are valid for applications received after Oct 1, 2023 for arrivals from Oct 1, 2023 until the end of 2024, but are subject to change at any time.

GENERAL FEES

Application Fee <i>(Applies to all programs, one-time, non refundable)</i>	\$180.00
Materials & Technology Fee <i>(per week)</i>	\$27.50
Student Health Insurance <i>(per week)</i>	\$50.00
Facility Fee <i>(per week)</i>	\$20.00
Airport Pickup Fee <i>(One Way)</i> MCO - Orlando International Airport <i>(Optional. Available to all students for an additional fee)</i>	\$235.00

HOUSING PRICES PER WEEK

Homestay <i>(per week)</i> <i>14 meals per week (breakfast and dinner)</i>	\$360
FIT Campus Residences On Campus <i>(per week)</i> <i>Double occupancy; 19 meals per week included</i>	\$425

ELS may use carefully selected partners to house students with suitable Homestay providers.

TUITION FEES PER WEEK

	1-11 Weeks	12-23 Weeks	24+ Weeks
Intensive English <i>(30 lessons per week)</i>	\$550	\$515	\$485
Semi-Intensive English <i>(20 lessons per week)</i>	\$425	\$400	\$375
American Explorer <i>(15 lessons per week)</i>	\$410	\$385	—

The American Explorer program is available for registrations up to a maximum of 12 weeks.

TUITION FEES

<i>(multiweek package fees)</i>	4 Weeks	8 Weeks	12 weeks	16 weeks	20 weeks	24 weeks	28 weeks	32 weeks	36 weeks	40 weeks	44 weeks	48 weeks
Intensive English <i>(30 lessons per week)</i>	\$2,200	\$4,400	\$6,180	\$8,240	\$10,300	\$11,640	\$13,580	\$15,520	\$17,460	\$19,400	\$21,340	\$23,280
Semi-Intensive English <i>(20 lessons per week)</i>	\$1,700	\$3,400	\$4,800	\$6,400	\$8,000	\$9,000	\$10,500	\$12,000	\$13,500	\$15,000	\$16,500	\$18,000
American Explorer <i>(15 lessons per week)</i>	\$1,640	\$3,280	\$4,620	—	—	—	—	—	—	—	—	—

SESSION START DATES

January 2, January 29, February 26, March 25, April 22, May 20, June 17, July 15, August 12, September 9, October 7, November 4, December 2

While all programs run in 4-week sessions, students can start on any Monday year-round (Tuesday if Monday is a public holiday). For the best experience we encourage students to start at the beginning of a session where possible and not to start on week four of the session.



LanguageCourse^{net} Book at worldwide lowest price at:
<https://www.languagecourse.net/school-els-tampa.php3>

+1 646 503 18 10

+44 330 124 03 17

+34 93 220 38 75

+33 1-78416974

+41 225 180 700

+49 221 162 56897

+43 720116182

+31 858880253

+7 4995000466

+46 844 68 36 76

+47 219 30 570

+45 898 83 996

+39 02-94751194

+48 223 988 072

+81 345 895 399

+55 213 958 08 76

+86 19816218990

ELS NASHVILLE

on the campus of **MIDDLE TENNESSEE STATE UNIVERSITY**

in
Murfreesboro,
Tennessee



WHY CHOOSE NASHVILLE?

- ELS Nashville is located on the campus of Middle Tennessee State University in Murfreesboro, one of the fastest-growing towns in Tennessee - just 30 minutes from Nashville!
- Nashville Tennessee, known as "Music City USA," is the ideal place for you to study English while immersing yourself in live music, concerts, and cultural events.
- Middle Tennessee State University is the largest undergraduate university in Tennessee, offering more than 140 different undergraduate degree programs, more than 100 different graduate degree programs and over 200 student organizations available to our students; including national honor societies, clubs and other student associations.

VALIDITY PERIODS FOR TUITION, HOUSING, & GENERAL FEES:

- Tuition and general fees valid for all new applications received after January 1, 2024.
- Homestay fees are valid for applications received after Oct 1, 2023 for arrivals in 2024, but are subject to change at any time. On and off campus student residence fees are valid for applications received after Oct 1, 2023 for arrivals from Oct 1, 2023 until the end of 2024, but are subject to change at any time.

GENERAL FEES

Application Fee <i>(Applies to all programs, one-time, non refundable)</i>	\$180.00
Materials & Technology Fee <i>(per week)</i>	\$27.50
Student Health Insurance <i>(per week)</i>	\$50.00
Facility Fee <i>(per week)</i>	\$20.00
Airport Pickup Fee <i>(One Way)</i> BNA - Nashville International Airport <i>(Optional. Available to all students for an additional fee)</i>	\$175.00

HOUSING PRICES PER WEEK

4Stay Campus Crossing Apartments Off Campus <i>(per week)</i> <i>Single occupancy</i>	\$290
---	--------------

TUITION FEES PER WEEK

	1-11 Weeks	12-23 Weeks	24+ Weeks
Intensive English <i>(30 lessons per week)</i>	\$550	\$515	\$485
Semi-Intensive English <i>(20 lessons per week)</i>	\$425	\$400	\$375
American Explorer <i>(15 lessons per week)</i>	\$410	\$385	—

The American Explorer program is available for registrations up to a maximum of 12 weeks.

TUITION FEES

<i>(multiweek package fees)</i>	4 Weeks	8 Weeks	12 weeks	16 weeks	20 weeks	24 weeks	28 weeks	32 weeks	36 weeks	40 weeks	44 weeks	48 weeks
Intensive English <i>(30 lessons per week)</i>	\$2,200	\$4,400	\$6,180	\$8,240	\$10,300	\$11,640	\$13,580	\$15,520	\$17,460	\$19,400	\$21,340	\$23,280
Semi-Intensive English <i>(20 lessons per week)</i>	\$1,700	\$3,400	\$4,800	\$6,400	\$8,000	\$9,000	\$10,500	\$12,000	\$13,500	\$15,000	\$16,500	\$18,000
American Explorer <i>(15 lessons per week)</i>	\$1,640	\$3,280	\$4,620	—	—	—	—	—	—	—	—	—

SESSION START DATES

January 2, January 29, February 26, March 25, April 22, May 20, June 17, July 15, August 12, September 9, October 7, November 4, December 2

While all programs run in 4-week sessions, students can start on any Monday year-round (Tuesday if Monday is a public holiday). For the best experience we encourage students to start at the beginning of a session where possible and not to start on week four of the session.



LanguageCourse^{net} Book at worldwide lowest price at:
<https://www.languagecourse.net/school-els-tampa.php3>

🇺🇸 +1 646 503 18 10

🇬🇧 +44 330 124 03 17

🇪🇸 +34 93 220 38 75

🇫🇷 +33 1-78416974

🇨🇭 +41 225 180 700

🇩🇪 +49 221 162 56897

🇮🇹 +43 720116182

🇯🇵 +31 858880253

🇮🇳 +7 4995000466

🇮🇩 +46 844 68 36 76

🇩🇰 +47 219 30 570

🇩🇪 +45 898 83 996

🇮🇹 +39 02-94751194

🇮🇹 +48 223 988 072

🇨🇦 +81 345 895 399

🇧🇷 +55 213 958 08 76

🇨🇦 +86 19816218990

ELS N.Y., MANHATTAN

on the campus of **NEW YORK INSTITUTE OF TECHNOLOGY**

in New York,
New York



WHY CHOOSE MANHATTAN?

- ELS Manhattan is located in the Upper West Side of Manhattan on the New York Institute of Technology campus, steps from Lincoln Center and famous Central Park.
- New York Institute of Technology is home to nearly 8000 students across three campuses. New York Tech offers more than 100 undergraduate and graduate degrees including technology, education, health, and business.
- Enjoy NYC tourist hotspots like the Statue of Liberty, Ellis Island, New York Shopping, the Museum of Modern Art (MoMA), and so much more!

VALIDITY PERIODS FOR TUITION, HOUSING, & GENERAL FEES:

- Tuition and general fees valid for all new applications received after January 1, 2024.
- Homestay fees are valid for applications received after Oct 1, 2023 for arrivals in 2024, but are subject to change at any time. On and off campus student residence fees are valid for applications received after Oct 1, 2023 for arrivals from Oct 1, 2023 until the end of 2024, but are subject to change at any time.

GENERAL FEES

Application Fee <i>(Applies to all programs, one-time, non refundable)</i>	\$180.00
Materials & Technology Fee <i>(per week)</i>	\$27.50
Student Health Insurance <i>(per week)</i>	\$50.00
Facility Fee <i>(per week)</i>	\$20.00
Airport Pickup Fee <i>(One Way) (Optional. Available to all students for an additional fee)</i>	
EWR - Newark Liberty International Airport	\$250.00
JFK - John F. Kennedy International Airport LGA - La Guardia Airport	\$215.00

HOUSING PRICES PER WEEK

Homestay <i>(per week)</i> <i>7 meals per week (breakfast only)</i>	\$375
---	--------------

ELS may use carefully selected partners to house students with suitable Homestay providers.

TUITION FEES PER WEEK

	1-11 Weeks	12-23 Weeks	24+ Weeks
Intensive English <i>(30 lessons per week)</i>	\$550	\$515	\$485
Semi-Intensive English <i>(20 lessons per week)</i>	\$425	\$400	\$375
American Explorer <i>(15 lessons per week)</i>	\$410	\$385	—

The American Explorer program is available for registrations up to a maximum of 12 weeks.

TUITION FEES

<i>(multiweek package fees)</i>	4 Weeks	8 Weeks	12 weeks	16 weeks	20 weeks	24 weeks	28 weeks	32 weeks	36 weeks	40 weeks	44 weeks	48 weeks
Intensive English <i>(30 lessons per week)</i>	\$2,200	\$4,400	\$6,180	\$8,240	\$10,300	\$11,640	\$13,580	\$15,520	\$17,460	\$19,400	\$21,340	\$23,280
Semi-Intensive English <i>(20 lessons per week)</i>	\$1,700	\$3,400	\$4,800	\$6,400	\$8,000	\$9,000	\$10,500	\$12,000	\$13,500	\$15,000	\$16,500	\$18,000
American Explorer <i>(15 lessons per week)</i>	\$1,640	\$3,280	\$4,620	—	—	—	—	—	—	—	—	—

SESSION START DATES

January 2, January 29, February 26, March 25, April 22, May 20, June 17, July 15, August 12, September 9, October 7, November 4, December 2

While all programs run in 4-week sessions, students can start on any Monday year-round (Tuesday if Monday is a public holiday). For the best experience we encourage students to start at the beginning of a session where possible and not to start on week four of the session.



LanguageCourse^{net} Book at worldwide lowest price at:
<https://www.languagecourse.net/school-els-tampa.php3>

🇺🇸 +1 646 503 18 10
🇧🇷 +31 858880253

🇺🇸 +44 330 124 03 17
🇧🇷 +7 4995000466

🇪🇸 +34 93 220 38 75
🇮🇹 +46 844 68 36 76
🇮🇹 +81 345 895 399

🇫🇷 +33 1-78416974
🇩🇪 +47 219 30 570
🇧🇷 +55 213 958 08 76

🇨🇦 +41 225 180 700
🇩🇪 +45 898 83 996
🇨🇦 +86 19816218990

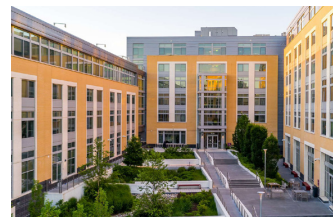
🇩🇪 +49 221 162 56897
🇮🇹 +39 02-94751194

🇮🇹 +43 720116182
🇮🇹 +48 223 988 072

ELS PHILADELPHIA

on the campus of **SAINT JOSEPH'S UNIVERSITY**

in
Philadelphia,
Pennsylvania



WHY CHOOSE PHILADELPHIA?

- ELS Philadelphia is located on the beautiful and central University City campus of Saint Joseph's University in Philadelphia, a modern yet historic city, offering a lively experience in American culture and history.
- The nationally recognized private Saint Joseph's University offers more than 40 academic majors, including some top ranked programs such as Marketing. ELS students have complete access to the campus facilities. Whether it's using the modern computer labs for extra studying or going for a swim in the indoor pool, this institution offers it all.
- Philadelphia is the fifth largest city in the U.S. and attracts nearly 40 million visitors per year. Using the city's extensive public transportation system, you can enjoy Philadelphia's culture, iconic sights, professional sports teams, dining, shopping and entertainment!

VALIDITY PERIODS FOR TUITION, HOUSING, & GENERAL FEES:

- Tuition and general fees valid for all new applications received after January 1, 2024.
- Homestay fees are valid for applications received after Oct 1, 2023 for arrivals in 2024, but are subject to change at any time. On and off campus student residence fees are valid for applications received after Oct 1, 2023 for arrivals from Oct 1, 2023 until the end of 2024, but are subject to change at any time.

GENERAL FEES

Application Fee <i>(Applies to all programs, one-time, non refundable)</i>	\$180.00
Materials & Technology Fee <i>(per week)</i>	\$27.50
Student Health Insurance <i>(per week)</i>	\$50.00
Facility Fee <i>(per week)</i>	\$20.00
Airport Pickup Fee <i>(One Way)</i> PHL- Philadelphia International Airport <i>(Optional. Available to all students for an additional fee)</i>	\$190.00

HOUSING PRICES PER WEEK

Living & Learning Commons On Campus <i>(per week)</i> <i>Double occupancy</i>	\$375
---	--------------

ELS may use carefully selected partners to house students with suitable Homestay providers.

TUITION FEES PER WEEK

	1-11 Weeks	12-23 Weeks	24+ Weeks
Intensive English <i>(30 lessons per week)</i>	\$550	\$515	\$485
Semi-Intensive English <i>(20 lessons per week)</i>	\$425	\$400	\$375
American Explorer <i>(15 lessons per week)</i>	\$410	\$385	—

The American Explorer program is available for registrations up to a maximum of 12 weeks.

TUITION FEES

<i>(multiweek package fees)</i>	4 Weeks	8 Weeks	12 weeks	16 weeks	20 weeks	24 weeks	28 weeks	32 weeks	36 weeks	40 weeks	44 weeks	48 weeks
Intensive English <i>(30 lessons per week)</i>	\$2,200	\$4,400	\$6,180	\$8,240	\$10,300	\$11,640	\$13,580	\$15,520	\$17,460	\$19,400	\$21,340	\$23,280
Semi-Intensive English <i>(20 lessons per week)</i>	\$1,700	\$3,400	\$4,800	\$6,400	\$8,000	\$9,000	\$10,500	\$12,000	\$13,500	\$15,000	\$16,500	\$18,000
American Explorer <i>(15 lessons per week)</i>	\$1,640	\$3,280	\$4,620	—	—	—	—	—	—	—	—	—

SESSION START DATES

January 2, January 29, February 26, March 25, April 22, May 20, June 17, July 15, August 12, September 9, October 7, November 4, December 2

While all programs run in 4-week sessions, students can start on any Monday year-round (Tuesday if Monday is a public holiday). For the best experience we encourage students to start at the beginning of a session where possible and not to start on week four of the session.



LanguageCourse^{net} Book at worldwide lowest price at:
<https://www.languagecourse.net/school-els-tampa.php3>

🇺🇸 +1 646 503 18 10
🇧🇷 +31 858880253

🇩🇪 +44 330 124 03 17
🇫🇷 +7 4995000466

🇪🇸 +34 93 220 38 75
🇮🇹 +46 844 68 36 76
🇨🇦 +81 345 895 399

🇩🇪 +33 1-78416974
🇩🇪 +47 219 30 570
🇧🇷 +55 213 958 08 76

🇨🇦 +41 225 180 700
🇩🇪 +45 898 83 996
🇨🇦 +86 19816218990

🇩🇪 +49 221 162 56897
🇮🇹 +39 02-94751194

🇩🇪 +43 720116182
🇩🇪 +48 223 988 072

ELS SAN FRANCISCO, NORTH BAY

on the campus of **DOMINICAN UNIVERSITY OF CALIFORNIA**

in
San Rafael,
California



WHY CHOOSE SAN FRANCISCO, NORTH BAY?

- ELS San Francisco-North Bay is located in beautiful San Rafael, CA, 12 miles north of San Francisco on the campus of Dominican University of California with student adventures to Muir Woods, Alcatraz, Pier 39, and Ferry Building.
- The private, independent Dominican University of California is the only four-year university in Marin County. This progressive, forward thinking university prides itself on innovation, incorporating a variety of learning techniques into the curriculum.
- ELS students enjoy access to the same facilities as Dominican University students, allowing them to congregate in the student lounge and share coffee in the courtyards or take advantage of the sports fields, fitness center and gymnasium!

VALIDITY PERIODS FOR TUITION, HOUSING, & GENERAL FEES:

- Tuition and general fees valid for all new applications received after January 1, 2024.
- Homestay fees are valid for applications received after Oct 1, 2023 for arrivals in 2024, but are subject to change at any time. On and off campus student residence fees are valid for applications received after Oct 1, 2023 for arrivals from Oct 1, 2023 until the end of 2024, but are subject to change at any time.

GENERAL FEES

Application Fee <i>(Applies to all programs, one-time, non refundable)</i>	\$180.00
Materials & Technology Fee <i>(per week)</i>	\$27.50
Student Health Insurance <i>(per week)</i>	\$50.00
Facility Fee <i>(per week)</i>	\$20.00
Airport Pickup Fee <i>(One Way)</i> SFO - San Francisco International Airport <i>(Optional. Available to all students for an additional fee)</i>	\$210.00

HOUSING PRICES PER WEEK

Homestay <i>(per week)</i> 14 meals per week (breakfast and dinner)	\$440
San Rafael Student Home Off Campus <i>(per week)</i> Double occupancy	\$335

ELS may use carefully selected partners to house students with suitable Homestay providers.

TUITION FEES PER WEEK

	1-11 Weeks	12-23 Weeks	24+ Weeks
Intensive English <i>(30 lessons per week)</i>	\$550	\$515	\$485
Semi-Intensive English <i>(20 lessons per week)</i>	\$425	\$400	\$375
American Explorer <i>(15 lessons per week)</i>	\$410	\$385	—

The American Explorer program is available for registrations up to a maximum of 12 weeks.

TUITION FEES

<i>(multiweek package fees)</i>	4 Weeks	8 Weeks	12 weeks	16 weeks	20 weeks	24 weeks	28 weeks	32 weeks	36 weeks	40 weeks	44 weeks	48 weeks
Intensive English <i>(30 lessons per week)</i>	\$2,200	\$4,400	\$6,180	\$8,240	\$10,300	\$11,640	\$13,580	\$15,520	\$17,460	\$19,400	\$21,340	\$23,280
Semi-Intensive English <i>(20 lessons per week)</i>	\$1,700	\$3,400	\$4,800	\$6,400	\$8,000	\$9,000	\$10,500	\$12,000	\$13,500	\$15,000	\$16,500	\$18,000
American Explorer <i>(15 lessons per week)</i>	\$1,640	\$3,280	\$4,620	—	—	—	—	—	—	—	—	—

SESSION START DATES

January 8, February 5, March 4, April 1, April 29, May 28, June 24,

July 22, August 19, September 16, October 14, November 11, December 9

While all programs run in 4-week sessions, students can start on any Monday year-round (Tuesday if Monday is a public holiday). For the best experience we encourage students to start at the beginning of a session where possible and not to start on week four of the session.



LanguageCourse^{net} Book at worldwide lowest price at:
<https://www.languagecourse.net/school-els-tampa.php3>

🇺🇸 +1 646 503 18 10
🇧🇷 +31 858880253

🇺🇸 +44 330 124 03 17
🇧🇷 +7 4995000466

🇪🇸 +34 93 220 38 75
🇮🇹 +46 844 68 36 76
🇮🇹 +81 345 895 399

🇫🇷 +33 1-78416974
🇩🇪 +47 219 30 570
🇩🇪 +55 213 958 08 76

🇨🇦 +41 225 180 700
🇩🇪 +45 898 83 996
🇨🇦 +86 19816218990

🇩🇪 +49 221 162 56897
🇮🇹 +39 02-94751194

🇮🇹 +43 720116182
🇮🇹 +48 223 988 072

ELS ST. PAUL

on the campus of **UNIVERSITY OF ST. THOMAS - MINNESOTA**

in
Minneapolis,
Minnesota



WHY CHOOSE ST. PAUL?

- ELS St. Paul is located on the city campus of University of St. Thomas in Minneapolis, Minnesota, rated #1 safest state in USA.
- The private, Catholic University of St. Thomas is a Top 150 ranked university. As Minnesota's largest private university, the University of St. Thomas has a diverse student body, with students from 50 states and 63 countries.
- ELS students enjoy access to the Twin Cities - Minneapolis and St. Paul - where they can visit the Science Museum of Minnesota, Mall of America, and Harriet Island!

VALIDITY PERIODS FOR TUITION, HOUSING, & GENERAL FEES:

- Tuition and general fees valid for all new applications received after January 1, 2024.
- Homestay fees are valid for applications received after Oct 1, 2023 for arrivals in 2024, but are subject to change at any time. On and off campus student residence fees are valid for applications received after Oct 1, 2023 for arrivals from Oct 1, 2023 until the end of 2024, but are subject to change at any time.

GENERAL FEES

Application Fee <i>(Applies to all programs, one-time, non refundable)</i>	\$180.00
Materials & Technology Fee <i>(per week)</i>	\$27.50
Student Health Insurance <i>(per week)</i>	\$50.00
Facility Fee <i>(per week)</i>	\$20.00
Airport Pickup Fee <i>(One Way)</i> MSP - Minneapolis - St. Paul International Airport <i>(Optional. Available to all students for an additional fee)</i>	\$220.00

HOUSING PRICES PER WEEK

Homestay <i>(per week)</i> 14 meals per week (breakfast and dinner)	\$355
St. Paul Student Residence Off Campus <i>(per week)</i> Single occupancy	\$365

ELS may use carefully selected partners to house students with suitable Homestay providers.

TUITION FEES PER WEEK

	1-11 Weeks	12-23 Weeks	24+ Weeks
Intensive English <i>(30 lessons per week)</i>	\$550	\$515	\$485
Semi-Intensive English <i>(20 lessons per week)</i>	\$425	\$400	\$375
American Explorer <i>(15 lessons per week)</i>	\$410	\$385	—

The American Explorer program is available for registrations up to a maximum of 12 weeks.

TUITION FEES

<i>(multiweek package fees)</i>	4 Weeks	8 Weeks	12 weeks	16 weeks	20 weeks	24 weeks	28 weeks	32 weeks	36 weeks	40 weeks	44 weeks	48 weeks
Intensive English <i>(30 lessons per week)</i>	\$2,200	\$4,400	\$6,180	\$8,240	\$10,300	\$11,640	\$13,580	\$15,520	\$17,460	\$19,400	\$21,340	\$23,280
Semi-Intensive English <i>(20 lessons per week)</i>	\$1,700	\$3,400	\$4,800	\$6,400	\$8,000	\$9,000	\$10,500	\$12,000	\$13,500	\$15,000	\$16,500	\$18,000
American Explorer <i>(15 lessons per week)</i>	\$1,640	\$3,280	\$4,620	—	—	—	—	—	—	—	—	—

SESSION START DATES

January 8, February 5, March 4, April 1, April 29, May 28, June 24,

July 22, August 19, September 16, October 14, November 11, December 9

While all programs run in 4-week sessions, students can start on any Monday year-round (Tuesday if Monday is a public holiday). For the best experience we encourage students to start at the beginning of a session where possible and not to start on week four of the session.



LanguageCourse^{net} Book at worldwide lowest price at:
<https://www.languagecourse.net/school-els-tampa.php3>

+1 646 503 18 10
 +31 858880253

+44 330 124 03 17
 +7 4995000466

+34 93 220 38 75
 +46 844 68 36 76
 +81 345 895 399

+33 1-78416974
 +47 219 30 570
 +55 213 958 08 76

+41 225 180 700
 +45 898 83 996
 +86 19816218990

+49 221 162 56897
 +39 02-94751194

+43 720116182
 +48 223 988 072

ELS ST. PETERSBURG

on the campus of **ECKERD COLLEGE**

in St. Petersburg, Florida



WHY CHOOSE ST. PETERSBURG?

- ELS St. Petersburg is located on the beautiful waterfront campus of Eckerd College in St. Petersburg, Florida where students can snorkel, kayak, fish and more.
- Eckerd College is a private institution offering some 40 undergraduate majors. The college takes advantage of its waterfront campus, offering well-known biology, marine science and environmental studies programs. ELS students enjoy free access to campus facilities, including the library, fitness center and computer lab.
- Nicknamed "The Sunshine City," St. Petersburg has award-winning beaches, highly rated restaurants, state and national parks, shopping, and cultural experiences waiting for you to discover them!

VALIDITY PERIODS FOR TUITION, HOUSING, & GENERAL FEES:

- Tuition and general fees valid for all new applications received after January 1, 2024.
- Homestay fees are valid for applications received after Oct 1, 2023 for arrivals in 2024, but are subject to change at any time. On and off campus student residence fees are valid for applications received after Oct 1, 2023 for arrivals from Oct 1, 2023 until the end of 2024, but are subject to change at any time.

GENERAL FEES

Application Fee <i>(Applies to all programs, one-time, non refundable)</i>	\$180.00
Materials & Technology Fee <i>(per week)</i>	\$27.50
Student Health Insurance <i>(per week)</i>	\$50.00
Facility Fee <i>(per week)</i>	\$20.00
Airport Pickup Fee <i>(One Way)</i> TPA - Tampa International Airport <i>(Optional. Available to all students for an additional fee)</i>	\$190.00

HOUSING PRICES PER WEEK

Homestay <i>(per week)</i> 14 meals per week (breakfast and dinner)	\$385
EC Campus Residences On Campus <i>(per week)</i> Double occupancy 19 meals per week included; minimum 8-week booking, only available on session start dates.	\$490

ELS may use carefully selected partners to house students with suitable Homestay providers.

TUITION FEES PER WEEK

	1-11 Weeks	12-23 Weeks	24+ Weeks
Intensive English <i>(30 lessons per week)</i>	\$550	\$515	\$485
Semi-Intensive English <i>(20 lessons per week)</i>	\$425	\$400	\$375
American Explorer <i>(15 lessons per week)</i>	\$410	\$385	—

The American Explorer program is available for registrations up to a maximum of 12 weeks.

TUITION FEES

<i>(multiweek package fees)</i>	4 Weeks	8 Weeks	12 weeks	16 weeks	20 weeks	24 weeks	28 weeks	32 weeks	36 weeks	40 weeks	44 weeks	48 weeks
Intensive English <i>(30 lessons per week)</i>	\$2,200	\$4,400	\$6,180	\$8,240	\$10,300	\$11,640	\$13,580	\$15,520	\$17,460	\$19,400	\$21,340	\$23,280
Semi-Intensive English <i>(20 lessons per week)</i>	\$1,700	\$3,400	\$4,800	\$6,400	\$8,000	\$9,000	\$10,500	\$12,000	\$13,500	\$15,000	\$16,500	\$18,000
American Explorer <i>(15 lessons per week)</i>	\$1,640	\$3,280	\$4,620	—	—	—	—	—	—	—	—	—

SESSION START DATES

January 2, January 29, February 26, March 25, April 22, May 20, June 17, July 15, August 12, September 9, October 7, November 4, December 2

While all programs run in 4-week sessions, students can start on any Monday year-round (Tuesday if Monday is a public holiday). For the best experience we encourage students to start at the beginning of a session where possible and not to start on week four of the session.



LanguageCourse^{net} Book at worldwide lowest price at:
<https://www.languagecourse.net/school-els-tampa.php3>

🇺🇸 +1 646 503 18 10
🇧🇷 +31 858880253

🇺🇸 +44 330 124 03 17
🇧🇷 +7 4995000466

🇪🇸 +34 93 220 38 75
🇮🇹 +46 844 68 36 76
🇮🇹 +81 345 895 399

🇫🇷 +33 1-78416974
🇸🇪 +47 219 30 570
🇧🇷 +55 213 958 08 76

🇨🇭 +41 225 180 700
🇩🇰 +45 898 83 996
🇨🇺 +86 19816218990

🇩🇪 +49 221 162 56897
🇮🇹 +39 02-94751194

🇪🇸 +43 720116182
🇺🇸 +48 223 988 072

ELS TAMPA

on the campus of **THE UNIVERSITY OF TAMPA**

in Tampa,
Florida



WHY CHOOSE TAMPA?

- ELS Tampa is located in downtown Tampa Bay on the campus of The University of Tampa just a short walk from restaurants, shops, the waterfront and the Tampa Bay River Walk.
- Boasting a very lively campus, the private University of Tampa has more than 150 student clubs and organizations. The university also offers a diverse range of academic options with 200 areas of undergraduate study. ELS students have access to a computer center for extra study time and a state-of-the-art fitness center complete with weight training and cardio equipment.
- In Tampa, there won't be a lack of exciting cultural activities for you to experience while studying here - from outdoor sports and relaxation to arts and entertainment to sunshine and sandy beaches - there's always something for everyone!

VALIDITY PERIODS FOR TUITION, HOUSING, & GENERAL FEES:

- Tuition and general fees valid for all new applications received after January 1, 2024.
- Homestay fees are valid for applications received after Oct 1, 2023 for arrivals in 2024, but are subject to change at any time. On and off campus student residence fees are valid for applications received after Oct 1, 2023 for arrivals from Oct 1, 2023 until the end of 2024, but are subject to change at any time.

GENERAL FEES

Application Fee <i>(Applies to all programs, one-time, non refundable)</i>	\$180.00
Materials & Technology Fee <i>(per week)</i>	\$27.50
Student Health Insurance <i>(per week)</i>	\$50.00
Facility Fee <i>(per week)</i>	\$20.00
Airport Pickup Fee <i>(One Way)</i> TPA - Tampa International Airport MCO - Orlando International Airport <i>(Optional. Available to all students for an additional fee)</i>	\$230.00 \$300.00

HOUSING PRICES PER WEEK

Homestay <i>(per week)</i> <i>14 meals per week (breakfast and dinner)</i>	\$385
Tampa Student Residence Off Campus <i>(per week)</i> <i>Double occupancy</i>	\$375

ELS may use carefully selected partners to house students with suitable Homestay providers.

TUITION FEES PER WEEK

	1-11 Weeks	12-23 Weeks	24+ Weeks
Intensive English <i>(30 lessons per week)</i>	\$550	\$515	\$485
Semi-Intensive English <i>(20 lessons per week)</i>	\$425	\$400	\$375

TUITION FEES

<i>(multiweek package fees)</i>	4 Weeks	8 Weeks	12 weeks	16 weeks	20 weeks	24 weeks	28 weeks	32 weeks	36 weeks	40 weeks	44 weeks	48 weeks
Intensive English <i>(30 lessons per week)</i>	\$2,200	\$4,400	\$6,180	\$8,240	\$10,300	\$11,640	\$13,580	\$15,520	\$17,460	\$19,400	\$21,340	\$23,280
Semi-Intensive English <i>(20 lessons per week)</i>	\$1,700	\$3,400	\$4,800	\$6,400	\$8,000	\$9,000	\$10,500	\$12,000	\$13,500	\$15,000	\$16,500	\$18,000

SESSION START DATES

January 8, February 5, March 4, April 1, April 29, May 28, June 24,

July 22, August 19, September 16, October 14, November 11, December 9

While all programs run in 4-week sessions, students can start on any Monday year-round (Tuesday if Monday is a public holiday). For the best experience we encourage students to start at the beginning of a session where possible and not to start on week four of the session.



LanguageCourse^{net} Book at worldwide lowest price at:
<https://www.languagecourse.net/school-els-tampa.php3>

+1 646 503 18 10
 +31 858880253

+44 330 124 03 17
 +7 4995000466

+34 93 220 38 75
 +46 844 68 36 76
 +81 345 895 399

+33 1-78416974
 +47 219 30 570
 +55 213 958 08 76

+41 225 180 700
 +45 898 83 996
 +86 19816218990

+49 221 162 56897
 +39 02-94751194

+43 720116182
 +48 223 988 072

ILSC HELLO

ONLINE ENGLISH THROUGH ILSC LANGUAGE SCHOOLS

Join from
anywhere



Hello
Higher Education &
Language Learning Online

WHAT IS ILSC HELLO?

ILSC HELLO Online English is offered through our partner school, ILSC. Students completing a level in ILSC HELLO may transfer to an in-person program at an ELS center. Learn about ILSC and ELS level equivalencies and explore your program options and schedules:

www.ilsc.com/language-schools/programs/online-english

WHY CHOOSE ILSC HELLO ONLINE ENGLISH?

- Learn English online from anywhere in the world through our partner school, ILSC Language Schools.
- Choose from three online English schedule options - study between 10-20 hours per week.
- Different program options include: General English, English for Academic Purposes, University Pathway, Greystone College Pathway, & IELTS
- Programs offered twice per day - choose the time that fits your time zone and life.
- Live virtual instruction from teachers with years of English teaching experience.
- Progress one level in as little as 4 weeks of online English study.
- Start online with ILSC HELLO, then transition to an ELS campus in the USA.

FEES ARE VALID FOR REGISTRATIONS RECEIVED BETWEEN JAN 1 - DEC 31, 2024

GENERAL FEES - PRICES FOR ILSC HELLO ARE IN CAD

Registration Fee <i>(Applies to all programs, one-time, non refundable)</i>	\$120 CAD
Materials Fee <i>(per week)</i>	\$10 CAD

TUITION FEES PER WEEK

Core Online <i>(10 hours per week)</i>	\$90 CAD
Semi-Intensive Online <i>(15 hours per week)</i>	\$110 CAD
Intensive Online <i>(20 hours per week)</i>	\$140 CAD

SESSION START DATES

January 2, January 29, February 26, March 25, April 22, May 20, June 17, July 15, August 12, September 9, October 7, November 4, December 2

All programs run in 4-week sessions.

Students who choose to take the University Pathway Online or Greystone College Pathway Online programs must begin on session start dates.

Students who choose to take General English Online, English for Academic Purposes Online, or IELTS Online can start on any Monday year-round (Tuesday if Monday is a public holiday); however, for the best experience we encourage students to start at the beginning of a session where possible and not to start on week four of the session.



LanguageCourse^{net} Book at worldwide lowest price at:
<https://www.languagecourse.net/school-els-tampa.php3>

🇺🇸 +1 646 503 18 10
🇺🇸 +31 858880253

🇬🇧 +44 330 124 03 17
🇬🇧 +7 4995000466

🇪🇸 +34 93 220 38 75
🇪🇸 +46 844 68 36 76
🇪🇸 +81 345 895 399

🇫🇷 +33 1-78416974
🇫🇷 +47 219 30 570
🇫🇷 +55 213 958 08 76

🇨🇭 +41 225 180 700
🇨🇭 +45 898 83 996
🇨🇭 +86 19816218990

🇩🇪 +49 221 162 56897
🇮🇹 +39 02-94751194

🇯🇵 +43 720116182
🇯🇵 +48 223 988 072

2023/2024 START DATES

2023

SEPTEMBER						
S	M	T	W	T	F	S
					1	2
3	4	5	6	7	8	9
10	11	12	13	14	15	16
17	18	19	20	21	22	23
24	25	26	27	28	29	30

OCTOBER						
S	M	T	W	T	F	S
1	2	3	4	5	6	7
8	9	10	11	12	13	14
15	16	17	18	19	20	21
22	23	24	25	26	27	28
29	30	31				

NOVEMBER						
S	M	T	W	T	F	S
			1	2	3	4
5	6	7	8	9	10	11
12	13	14	15	16	17	18
19	20	21	22	23	24	25
26	27	28	29	30		

DECEMBER						
S	M	T	W	T	F	S
					1	2
3	4	5	6	7	8	9
10	11	12	13	14	15	16
17	18	19	20	21	22	23
24	25	26	27	28	29	30
31						

2024

JANUARY						
S	M	T	W	T	F	S
	1	2	3	4	5	6
7	8	9	10	11	12	13
14	15	16	17	18	19	20
21	22	23	24	25	26	27
28	29	30	31			

APRIL						
S	M	T	W	T	F	S
	1	2	3	4	5	6
7	8	9	10	11	12	13
14	15	16	17	18	19	20
21	22	23	24	25	26	27
28	29	30				

JULY						
S	M	T	W	T	F	S
	1	2	3	4	5	6
7	8	9	10	11	12	13
14	15	16	17	18	19	20
21	22	23	24	25	26	27
28	29	30	31			

OCTOBER						
S	M	T	W	T	F	S
		1	2	3	4	5
6	7	8	9	10	11	12
13	14	15	16	17	18	19
20	21	22	23	24	25	26
27	28	29	30	31		

FEBRUARY						
S	M	T	W	T	F	S
				1	2	3
4	5	6	7	8	9	10
11	12	13	14	15	16	17
18	19	20	21	22	23	24
25	26	27	28	29		

MAY						
S	M	T	W	T	F	S
			1	2	3	4
5	6	7	8	9	10	11
12	13	14	15	16	17	18
19	20	21	22	23	24	25
26	27	28	29	30	31	

AUGUST						
S	M	T	W	T	F	S
				1	2	3
4	5	6	7	8	9	10
11	12	13	14	15	16	17
18	19	20	21	22	23	24
25	26	27	28	29	30	31

NOVEMBER						
S	M	T	W	T	F	S
					1	2
3	4	5	6	7	8	9
10	11	12	13	14	15	16
17	18	19	20	21	22	23
24	25	26	27	28	29	30

MARCH						
S	M	T	W	T	F	S
					1	2
3	4	5	6	7	8	9
10	11	12	13	14	15	16
17	18	19	20	21	22	23
24	25	26	27	28	29	30
31						

JUNE						
S	M	T	W	T	F	S
						1
2	3	4	5	6	7	8
9	10	11	12	13	14	15
16	17	18	19	20	21	22
23	24	25	26	27	28	29
30						

SEPTEMBER						
S	M	T	W	T	F	S
1	2	3	4	5	6	7
8	9	10	11	12	13	14
15	16	17	18	19	20	21
22	23	24	25	26	27	28
29	30					

DECEMBER						
S	M	T	W	T	F	S
1	2	3	4	5	6	7
8	9	10	11	12	13	14
15	16	17	18	19	20	21
22	23	24	25	26	27	28
29	30	31				

A SCHEDULE START DATES

Centers on Schedule A include:

Cincinnati, OH
Cleveland, OH
Houston, TX
Melbourne, FL
Nashville, TN
New York City, NY
Philadelphia, PA
St. Petersburg, FL

B SCHEDULE START DATES

Centers on Schedule B include:

Chicago, IL
Los Angeles County, CA
San Francisco, North Bay, CA
St. Paul, MN
Tampa, FL

2024 HOLIDAYS

New Year's Day	January 1
Martin Luther King Day	January 15
President's Day	February 19
Good Friday	March 29
Memorial Day	May 27
Juneteenth	June 19
Independence Day	July 4
Labour Day	September 2
Thanksgiving	November 28 & 29
Christmas Day	December 25



TERMS & CONDITIONS

HOUSING PRICING

Prices subject to change.

Housing reservations are subject to availability.

If a student submits notification of visa approval to ELS fewer than 7 working days prior to arrival, ELS reserves the right to offer alternative housing, which may incur additional charges.

If a student defers the arrival day due to delayed visa processing, ELS cannot guarantee the originally booked housing, and any additional cost that may be incurred in arranging alternative housing for the student will be passed on to the student.

ELS programs are offered in 4-week sessions but students may start any week. As such, prices are listed by week. All ELS homestays are single occupancy.

HOUSING PAYMENT

Full payment arrangements of a Student Residence Booking is required twenty-eight (28) days prior to Check-in.

Full payment arrangements of a Homestay Booking is required fourteen (14) days prior to Check-in.

Failure to provide proof of payment by the stipulated dates may result in a Room Release.

In the event that a Student needs to change their originally scheduled Check-in and/or Check-out dates for any reason, the Date Change policy applies.

HOUSING CANCELLATION

We understand that circumstances may arise where a Student needs to cancel their Booking. The following cancellation provisions will determine the applicable timelines and charges that will apply to a cancelled Booking, which balance the need for the flexibility for the Student with the commitments that ELS makes with Student Residence providers and Homestay families.

CANCELLATION BEFORE CHECK-IN (STUDENT RESIDENCE)

At least 28 days' notice of cancellation request

If a Student wishes to cancel a Student Residence Booking and they give us at least twenty-eight (28) days' notice before their Check-in date, they are entitled to a full refund of the paid accommodation charges.

Less than 28 days' notice of cancellation request

If a Student wishes to cancel a Student Residence Booking and they give us less than twenty-eight (28) days' notice before their Check-in date, they must pay up to four (4) weeks' accommodation fee.

CANCELLATION BEFORE CHECK-IN (HOMESTAY)

At least 14 days' notice of cancellation request

If a Student wishes to cancel a Homestay Booking and they give us at least fourteen (14) days' notice before their Check-in date, they are entitled to a full refund of the accommodation charges.

Less than 14 days notice of cancellation request

If a Student wishes to cancel a Homestay Booking and they give us less than fourteen days (14) days' notice before their Check-in date, they must pay up to two (2) weeks' accommodation fee.

CANCELLATION AFTER CHECK-IN (STUDENT RESIDENCE & HOMESTAY)

If a Student wishes to cancel or shorten a Student Residence or Homestay Booking after Check-in:

(i) Bookings up to four (4) weeks and six (6) days (total 34 days), no refund;

(ii) Bookings more than 5 weeks (total 35 days), with four (4) weeks Written Notice, they will be entitled to a refund of outstanding amount.

MEALS

Students staying in ELS homestays receive 14 meals a week (breakfast and dinner every day of the week) with the exception of the Manhattan center where students will receive 7 meals a week (breakfast only). ELS off-campus residences do not include meal plans. Any university on-campus residences that include meal plans are specifically noted on the application and in Knowledge Hub.



LanguageCourse.net Book at worldwide lowest price at:
<https://www.languagecourse.net/school-els-tampa.php3>

+1 646 503 18 10

+44 330 124 03 17

+34 93 220 38 75

+33 1-78416974

+41 225 180 700

+49 221 162 56897

+43 720116182

+31 858880253

+7 4995000466

+46 844 68 36 76

+47 219 30 570

+45 898 83 996

+39 02-94751194

+48 223 988 072

+81 345 895 399

+55 213 958 08 76

+86 19816218990

TERMS & CONDITIONS

ELS I-20 ELIGIBLE PROGRAMS

ELS Intensive and Semi-Intensive study programs are considered full-time study programs and are eligible for an I-20. The I-20 is required to apply for your F-1 student visa. Please note that the American Explorer program is not eligible for an I-20.

COVID-19 VACCINATIONS

Proof of COVID-19 vaccination is required for confirmation of ELS homestay placements. If vaccination is not completed by the homestay arrival date, students are expected to start the vaccination process within 7 days of arrival and must submit proof to ELS. Students who do not begin the vaccination process within 7 days of arrival may be removed from ELS housing and will be responsible for finding their own alternative housing. ELS Terms & Conditions apply and a removed student may not be eligible for a refund.

AIRPORT PICK-UP SERVICE

Airport pick-up fees include a maximum of 1 hour waiting time. In the event of delays exceeding 1 hour, students will be charged an additional fee at the school.

In order to secure airport pick-up, ELS must receive flight details, arrival times, and drop-off location at least 7 days prior to student's arrival. No refunds will be granted for airport pick-up if flight details are not received at least 7 days prior to arrival.

CANCELLATION OF AIRPORT PICK-UP / DROP-OFF (AIRPORT TRANSFER)

If a Student wished to cancel an Airport Pick-Up or Drop-Off request, they must give at least 48 hours written notice prior to Check-In.

If sufficient notice of the cancellation request is received, the Student is entitled to 100% refund of the Airport Pick-Up / Drop-Off amount.

Failure to provide sufficient notice of the Airport Pick-Up / Drop-Off cancellation request will result in no refund.

STUDENT HEALTH INSURANCE

All ELS students must have medical insurance coverage while in the U.S.A. If you cannot provide evidence of sufficient coverage, in English, you must purchase the ELS Student Health Plan. The Student Health Plan is offered to ELS students at a non-refundable fee of \$50 per week. You will receive additional information about the Student Health Plan when you arrive at the center.

