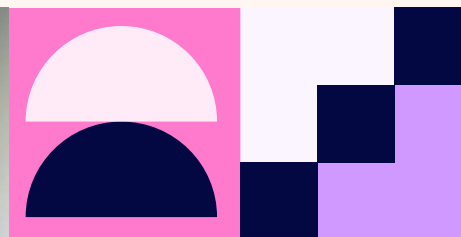


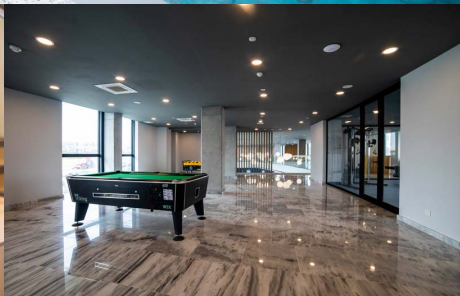
# Apollonia Student Halls

Limassol - Cyprus



## Why choose Apollonia Student Halls

- Affordable
- Brand New
- Stylish and spacious
- 24 Hour Reception
- Restaurant
- Gym



## The area

This fantastic residence is just a 7 minute walk from the school and only a 15 minute bus ride to town. There is a bus stop immediately outside the residence.

The campus boasts state of the art design with high ceilings and marble floors.

### Key facts:

<b>Room Types</b>	Studio (Single occupancy) & 2 Bedroom Apartments (for students traveling together)	<b>Board</b>	An international restaurant is connected and students can use their key card for the student discount
<b>Bathroom</b>	En-suite	<b>Bed type</b>	Single bed
<b>Available</b>	July and August	<b>Minimum age</b>	18+, or 15+ if accompanied by an adult
<b>Kitchen facilities</b>	Private kitchenette		
<b>Travel time to school</b>	7 minute walk		
<b>Arrival &amp; departure</b>	Arrival: Sunday Departure: Sunday	<b>Check In/Check Out</b>	After 15:00 / Before 10:00
<b>Security/ Reception</b>	24-hour reception		
<b>Internet</b>	free WiFi		
<b>Cleaning</b>	Cleaning upon request at extra charge		
<b>Towel</b>	Provided		
<b>Laundry</b>	On-site coin operated		
<b>Residence facilities</b>	Play room, restaurant, mini market and gym		
<b>Room furnishing</b>	Single bed, ensuite bathroom with shower, study desk and chair		
<b>Deposit</b>	€100 damage deposit required upon arrival		

Find out more at [bayswater.ac/cyprus](https://bayswater.ac/cyprus)

Book at worldwide lowest price at: <https://www.languagecourse.net/school-english-in-cyprus-limassol.php3>

- +1 646 503 18 10
- +44 330 124 03 17
- +34 93 220 38 75
- +33 1-78416974
- +41 225 180 700
- +49 221 162 56897
- +39 02-94751194
- +81 345 895 399
- +61 2 958 08 76
- +1 416 291 30 570
- +1 415 223 18990
- +55 11 9981 1000
- +91 11 2610 1234
- +86 10 1234 5678
- +82 2 1234 5678
- +52 55 1234 5678
- +7 495 000 466
- +31 20 1234 5678
- +46 8 1234 5678
- +45 33 1234 5678
- +47 22 1234 5678
- +48 22 1234 5678
- +42 2 1234 5678
- +421 2 1234 5678
- +386 1 1234 5678
- +385 1 1234 5678
- +420 2 1234 5678
- +421 2 1234 5678
- +386 1 1234 5678
- +385 1 1234 5678



## Getting around

### To the school

Walking 7 minutes

### From the airport by public transport

10 euros (approx)

60 mins Larnaca Airport

45 mins Paphos Airport

Please note students must make their own way to their residence from the designated drop off point

### Transfer available on booking

Yes

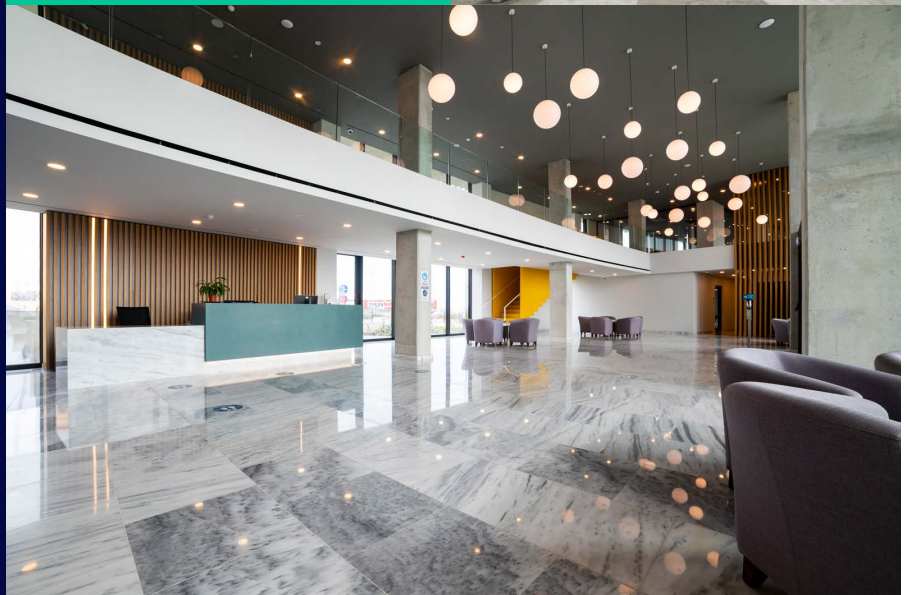
### Cyprus Travel Information:

[www.intercity-buses.com](http://www.intercity-buses.com)

[www.cyprusbybus.com](http://www.cyprusbybus.com)

### Travel times:

English in Cyprus	24 mins	
1 Old Town	17 mins	
2 Fasouri Waterpark	17 mins	
3 Limassol Marina	19 mins	



[bayswater.ac/cyprus](http://bayswater.ac/cyprus)

E-mail us  
[bookings@bayswater.ac](mailto:bookings@bayswater.ac)

Telephone  
+357 25 822923

Address  
1-3 Domenitsas Kavounidou 3080- Limassol

### Agent Enquiries

Our Agents are appointed experts in your country and can give you specialist advice on our courses, as well as any visa requirements. Contact us for an Agent in your area.

For agent sales enquiries please contact us at [sales@bayswater.ac](mailto:sales@bayswater.ac)



LanguageCourse.net Book at worldwide lowest price at:  
<https://www.languagecourse.net/school-english-in-cyprus-limassol.php3>

+1 646 503 18 10  
 +31 858880253

+44 330 124 03 17  
 +7 4995000466

+34 93 220 38 75  
 +46 844 68 36 76  
 +81 345 895 399

+33 1-78416974  
 +47 219 30 570  
 +55 213 958 08 76

+41 225 180 700  
 +45 898 83 996  
 +86 19816218990

+49 221 162 56897  
 +39 02-94751194

+43 720116182  
 +48 223 988 072