



HOUSING



FRENCH COURSES



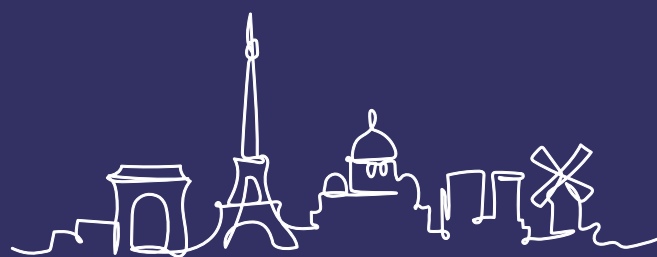
FRENCH LIFE



CERTIFICATION



PROFESSIONAL TRAINING



2024

Private institution of higher education

Live & Learn France

A school that values your studies

Founded in 1971, Etoile Institut de Langue has acquired over the decades a solid experience in the **teaching of French as a foreign language**.

Since 2000, our courses in French as a Foreign Language (French Language and Civilization) have been recognized as higher education.

Since 2010, our courses in French as a Foreign Language have been awarded the Français Langue Etrangère Quality Label. This label is a quality assurance process initiated by three French ministries: the Ministry of Higher Education, Research and Innovation, the Ministry of Culture and the Ministry of Europe and Foreign Affairs.

Since 2020, our French as a Foreign Language courses are also certified by Qualiopi, a certification in the field of professional training issued by France Compétences.

In 2023, Etoile went on one step further by allowing university students to obtain ECTS (European Credits Transfer System). ECTS credits allow students to officially recognize their academic studies while facilitating international mobility. The possibility of obtaining ECTS and earning a diploma such as the DELF (Diplôme d'études en langue française) or the DALF (Diplôme approfondi de langue française) enhances the course followed at Etoile. It is in this spirit that we welcome you to achieve your goals.



Live & Learn France



Joël Nangis

Director of Etoile Institut de Langue



Why choose Etoile Institut?

French language school with university credits



EUROPEAN CREDITS GRANTED PROGRAM

FRANCE EDUCATION INTERNATIONAL

Preparatory programs for French certificates and diplomas recognized by the State



A school with the French Foreign Language Quality Label since 2010



An internationally recognized school



A school that welcomes students from American universities as part of their course

Which program for my project?

From 1 to 4 weeks
For short-term training
l'Initial
more information on page **6**

From 5 weeks
To obtain an official certification
le Certifiant
more information on page **8**

In a 24- week course
To obtain an official diploma & credits
le Diplômant
French Language & Culture Short Program
more information on page **10**

In a 24-week course
To prepare to integrate a Grande École
la Prépa
more information on page **14**

From 1 to 3 weeks
To get started in photography
français +
more information on page **18**





Throughout the year, Etoile Institut welcomes students in the L'Initial program for a **short-term course**. This program is designed for **all those who wish to discover, refresh or improve their level of French**.

Key points of L'Initial

- 1 **A flexible program that allows you to start every Monday except for beginners**
- 2 **A program offered in a Standard or Intensive formula**

STANDARD	20 lessons = 15h of general French / week	
INTENSIVE	20 lessons = 15h of general French / week + 6 lessons of Culture and current events / week	
- 3 **A program for short stays**
 - From 1 to 4 weeks
 - For students who wish to enroll for more than 4 weeks, they will be enrolled in Le Certifiant program, which includes an official certification, the Test de Connaissance du Français (TCF).
- 4 **A program for students of all levels**
 - Beginner, elementary, intermediate and advanced
- 5 **A program with regular pedagogical follow-up**
 - According to the schedule, monthly evaluation is possible

Class Times

Morning
Monday to Wednesday from 9 am to 1 pm & Thursday from 9 to 12 am

Afternoon
Monday to Wednesday from 1:30 to 5:30 pm & Thursday from 1:30 to 4:30 pm

Students are placed in a class either in the morning or in the afternoon depending on their level of French.

No. of students

14 students

- 10/12 students on average
- 16 students in case of high attendance

Calendar

Start dates for beginners
15/01/24, 19/02/24, 25/03/24, 13/05/24, 01/07/24, 05/08/24, 02/09/24, 30/09/24, 04/11/24

Levels offered

From beginner level to C1 level

Program duration	From 1 to 4 weeks
Program dates	All year around
Minimum level of French	All
Standard 20 lessons of general french / week	✓
Intensive 20 lessons of general french + 6 of Culture & current events / week	✓ +
Higher Education Preparation Module	
Placement test before the start of the course	✓
Monthly evaluation	✓
Monthly one-on-one tutoring	
Attendance certificate	✓
Preparation for the TCF exams	
TCF official final certification (core sections only)	Optional
Preparation for the DELF A2, B1, B2 or DALF C1 exams	
DELF A2, B1, B2 or DALF C1 exam	
Official Ev@lang mid-term test	
Official ECTS transcript & certificate of achievement	
Certificate of Aptitude for Higher Education	
Regular individual or small group coaching	
Delivery of an individualized project at the end of the course	

Online:
Autonomous online course

Opinion ★★★★★

There are excellent teachers and teaching methods that help you learn French quickly.

Sônia
(Google review)



Price per week

1 to 4 weeks

STANDARD	INTENSIVE
340 €	360 €

Administrative fee 80 €

Option for l'Initial

TCF
120 €

Offer: -10% for Etoile students

What is Culture and current events?

Culture and current events is an **online self-learning platform** offered in the Intensive formula. Each week, a different theme is discussed, reflecting French or French socio-cultural news, linked to an important moment in the history of France or its heritage. By following this module, the student acquires an immediately useful understanding and in-depth knowledge of French culture, through a graduated program and resources calibrated to their level. The student can log in **without any time constraints** to our 100% online interactive program. Content is published every Monday. Audio documents, videos, various activities allow you to optimize, independently, your oral and written comprehension skills, with a massive contribution of vocabulary. To validate the knowledge acquired, 2 quizzes are offered: the first dealing with online documents, the second requiring personal research on the subject.





At Etoile Institut, all students enrolled in Le Certifiant program take at the end of their course the TCF (Test de Connaissance du Français).

The TCF is the French test of the French Ministry of Education. Like the TOEIC for English, the TCF evaluates the student's general French skills and positions him or her according to the 6 levels of the scale defined by the Common European Framework of Reference for Languages (A1, A2, B1, B2, C1, C2). TCF results are valid for 2 years.

Throughout the course, the student is prepared for this exam, which he or she will take in our exam center. Whether for academic or professional reasons, the student's progress is validated by an official certification recognized by French universities that accept students who have reached the B2 level.

Key points of Le Certifiant

1 A flexible program that allows you to start every Monday except for beginners

2 A program offered in a Standard or Intensive formula

STANDARD	20 lessons = 15h of general French + TCF exam	
INTENSIVE	20 lessons of general French + monthly tutoring + TCF exam + 6 lessons of Culture and current events / week	

3 A program for medium and long-term stays
· Registration for 5 or more weeks

4 A program for students of all levels
· Beginner, elementary, intermediate and advanced

5 A program with regular pedagogical follow-up
· Monthly evaluation

Class Times

Morning
Monday to Wednesday from 9 am to 1 pm & Thursday from 9 to 12 am

Afternoon
Monday to Wednesday from 1:30 to 5:30 pm & Thursday from 1:30 to 4:30 pm

Students are placed in a class either in the morning or in the afternoon depending on their level of French.

No. of students

14 students
· 10/12 students on average
· 16 students in case of high attendance

Calendar

Start dates for beginners
15/01/24, 19/02/24, 25/03/24, 13/05/24, 01/07/24, 05/08/24, 02/09/24, 30/09/24, 04/11/24

Levels offered

From beginner level to C1 level

Program duration	From 5 weeks
Program dates	All year around
Minimum level of French	All
Standard 20 lessons of general french / week	✓
Intensive 20 lessons of general french + 6 of Culture & current events / week	✓ +
Higher Education Preparation Module	
Placement test before the start of the course	✓
Monthly evaluation	✓
Monthly one-on-one tutoring	✓ Intensive
Attendance certificate	✓
Preparation for the TCF exams	
TCF official final certification (core sections only)	✓
Preparation for the DELF A2, B1, B2 or DALF C1 exams	Optional
DELF A2, B1, B2 or DALF C1 exam	Optional
Official Ev@lang mid-term test	
Official ECTS transcript & certificate of achievement	
Certificate of Aptitude for Higher Education	
Regular individual or small group coaching	
Delivery of an individualized project at the end of the course	

Online:
Autonomous online course

Opinion ★★★★★

This school is ideal! I studied there for six months. Thanks to Professor Anne, I have made considerable progress in French. If you want to do like me, I advise you to register.

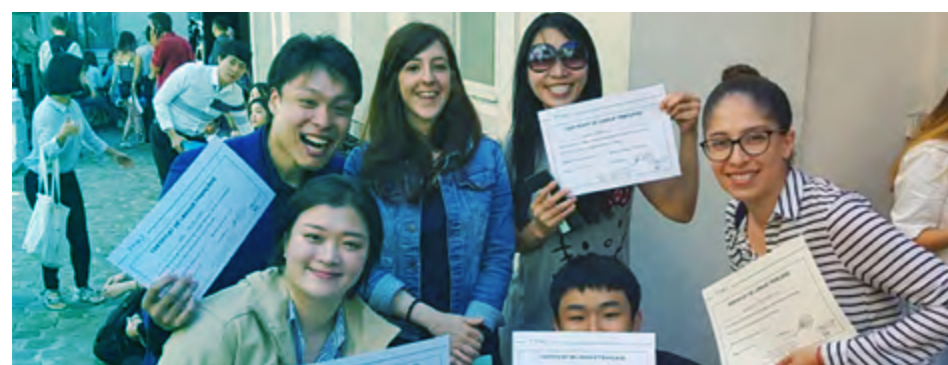
Ruslan
(Google review)



Price per week

5 to 11 weeks	
STANDARD	INTENSIVE
290 €	310 €
12 weeks and more	
190 €	210 €

Administrative fee 80 €





Program eligible for 30 university credits



E. A. B. H. E. S.

Le Diplômant: French Language and Culture Short Program is a 24-week complete academic experience with personalized support to build your project. At the end of the course, students take the **DELF** (Diplôme d'études en langue française) or **DALF** (Diplôme approfondi de langue française) and **receive ECTS credits** which they can transfer to their university for their future curriculum. This program is an EABHES accredited program.

Key points of Le Diplômant

- 1 A preparation for your future**
 This program allows students to prepare to pursue professional or personal projects and are at the end of their program positioned to move toward their goals
- 2 An Intensive 26 lessons per week formula**

INTENSIVE	20 lessons of general French / week + 6 lessons of Culture and current events / week + preparatory module for DELF / DALF exams + monthly academic and professional preparation workshop	
------------------	---	--
- 3 Regular educational monitoring**
 - Pathway program with ECTS credits
 - Preparation workshops
 - Individual pedagogical follow-up
 - Monthly evaluation
 - Ev@lang test at mid-term
 - DELF / DALF diploma
 - Personal project
- 4 A program for students with an intermediate level**
 A1.2 level required to enter the program
 (Beginner students may apply if they register in a beginners' class before the program)
- 5 Regular & personalized support**
 - Educational interview + analysis of the student's project
 - Regular individual or small group coaching
 - Delivery of an individualized project at the end of the course*
 - Assistance in registering for social security

*The Personal Project is an opportunity for students of the Le Diplômant program to explore in depth an academic, professional or personal interest with dedicated support. Examples of subjects: a photographic or writing project to discover Paris; studies on particular subject in preparation for the integration of a Master's degree, etc...

Class Times

Morning
 Monday to Wednesday from 9 am to 1 pm
 & Thursday from 9 to 12 am

Afternoon
 Monday to Wednesday from 1:30 to 5:30 pm &
 Thursday from 1:30 to 4:30 pm

Students are placed in a class either in the morning or in the afternoon depending on their level of French.

No. of students

14 students
 · 10/12 students on average
 · 16 students in case of high attendance

Calendar

Program dates
 From 23/09/24 to 28/03/25

Required level

A1.2 level

Workshops

The monthly workshops of the Le Diplômant program are designed **to facilitate the integration of students into French university or professional life** at the end of their studies. Each month, a different theme of preparation is offered. Throughout the program, students benefit from specialized teaching, opportunities to present the progress of their individual work and coaching experiences.

This bouquet of activities allows students to discover their own abilities and refine the rest of his course.

Workshop topics include:

- Preparation of CV and cover letter
- Preparation for academic and professional interviews
- Public speaking and taking notes
- Practical aspects of French universities and companies
- Presentation of students' individual projects
- Coaching exploration

How to apply for Le Diplômant ?

Step 1

Submit an application with the following documents:

- Registration form,
- Cover letter,
- CV,
- Photocopy of passport.

Step 2

For students from outside the European Union, **contact the Campus France office** in your country.

Step 3

After the Campus France interview, make an appointment **with the visa service** in your country.

Our Diplômant Program allows **students to prepare for further studies in France**, a professional endeavor, or a personal project. Students who enter this program receive special support for their projects. Acceptance into this program implies the student's commitment to intensive work throughout their stay at Etoile.

To apply for the program, please **provide the registration form, the photocopy of passport, a CV, a cover letter** (1-2 pages) and a proof of A1.2 or higher level in French (if you do not have an official certificate, we will send you an Ev@lang test to take). In the cover letter, we invite to explore the following points:

- academic or professional background
- experiences abroad / with cultures different from your own
- goals (academic, professional, personal) after your studies at Etoile
- project you wish to pursue during your studies at Etoile.





EABHES
Accredited
program

Program eligible
for 30 university
credits



Program duration	6 months (24 weeks)
Program dates	From 23/09/24 to 28/03/25
Minimum level of French	Level A1.2
Estimated level at the end of the standard course	B1 - B2 - C1
Standard 20 lessons of general french / week	
Intensive 20 lessons of general french + 6 of Culture & current events / week	✓ +
Higher Education Preparation Module	✓
Placement test before the start of the course	✓
Monthly evaluation	✓
Monthly one-on-one tutoring	✓
Attendance certificate	✓
Preparation for the TCF exams	
TCF official final certification (core sections only)	Optional
Preparation for the DELF A2, B1, B2 or DALF C1 exams	✓
DELF A2, B1, B2 or DALF C1 exam	✓
Official Ev@lang mid-term test	✓
Official ECTS transcript & certificate of achievement	✓
Certificate of Aptitude for Higher Education	
Regular individual or small group coaching	✓
Delivery of an individualized project at the end of the course	✓
Admission by application only	✓
Educational interview + analysis of the student's project	✓
Orientation service and validation of the file by the admission commissions of the grandes écoles	
Skills pathway: academic methodology and preparation for employability	
Introduction to selected specialties	

Online:
Autonomous online course

Opinion ★★★★★

It's the best place in the world to learn French, all the personal is super kind, they will not only teach you the language but also all about the culture, 100% Satisfied with everything. It was a great experience in Paris, thanks to you all.

Richard
(Google review)



Price per session

24 weeks

5 600 €

Administrative fee 140 €

Option for le Diplômant

Price per additional week

Before and/or after
le Diplômant program

210 €



Frequently Asked Questions (FAQ) - Le Diplômant French Course

What is the objective of the program Le Diplômant?

Le Diplômant prepares students not only to reach advanced proficiency in French, but also to develop the skills necessary to pursue higher education studies or professional experiences in France.

Students who successfully complete all modules of the program earn ECTS (European Credit Transfer and Accumulation System) and take the exams to earn the DELF B1, B2 or DALF C1 diploma. Obtaining the DELF B2 is often a prerequisite for international students wishing to study in French institutions. Therefore, this course provides students with the opportunity to prepare for this exam and strengthen their application for higher education.

How long does the program last?

The program runs for a fixed duration of 6 months, starting in September and ending in March.

Can students take additional courses before or after the program?

Yes, students have the option to enroll in supplementary courses before or after the 24-week program.

What is the minimum entry requirement for the program?

To enter the program, students must have at least an A1.2 level of French proficiency. However, beginners are also welcome if they enroll in our French classes at least 3 weeks before the start of Le Diplômant.

What exams will students take at the end of their training?

At the end of the training, students will take the DELF or DALF exams, depending on their level of proficiency.

Beyond the 15 hours of French lessons, what else do students study in the program?

Students also study in an online course focused on French culture and current affairs, as well as monthly skills workshops that prepare students for studying or working in France. Individual academic coaching takes place throughout the program to assist in students' success.

What are the ECTS credits earned through the program? What are the requirements to earn credits?

The European Credit Transfer and Accumulation System (ECTS) is used to quantify and compare academic credits across Europe. The 30 ECTS credits earned through Le Diplômant are internationally recognized for university credit transfer. In order to receive the ECTS transcript, students must successfully complete all modules of the program with sufficient grades and attendance record.

Is there any flexibility in the program's schedule?

No, the program runs at fixed dates from September to March. It is essential for students to adhere to the designated timeline to complete the training successfully.

Will successful completion of the DELF B1, B2, or DALF C1 guarantee entry into a French university?

While these language certifications can strengthen a student's application, admission requirements for French universities may vary. The Diplômant program aims to assist students, but ultimate acceptance into a French university depends on meeting the specific university's criteria.



La Prépa is the safe way to succeed in your studies in France.

In a 24-week course, students focus on language, methodology and skills related to their field of specialization in order to enter a top school. They develop a foundation of key knowledge to activate their potential and give themselves the means to succeed in their studies. At the end of the program, students are equipped to continue their studies at a university or in the famous Grandes écoles.

Quantum Pathway Academy This higher-education preparation curriculum, taught by our expert partner Quantum Pathway Academy, provides the necessary pre-requisites for further studies in France.

Key points of La Prépa

- A program with fixed dates**
- A long term course**
6 months (24 weeks) of French + Skills course + Introduction to the specialty
- A combined program**

French courses 15 hours of general French / week + Preparation for the TCF exam	Skill courses 2h of university methodology / week + 2h of career skills / week + introduction to the field of study for 24 or 60h depending on the field
---	--
- A program for students with an intermediate level**
B1 level required to enter the program
- An admission-based program**
 - Admission by application only
 - Pedagogical interview + analysis of the student's project
 - Subject to eligibility, partner schools may issue pre-admission on condition of successfully completing the preparatory program
- A regular pedagogical follow-up**
 - Monthly evaluation
 - Monthly individual tutoring
 - Official Ev@lang test at mid-term*
 - Online preparation for the TCF exam
 - Registration and taking the TCF
 - Certificate of Aptitude for Higher Education
- An orientation service**
Orientation service and validation of the file by the admission committees of the Grandes Ecoles

*Ev@lang is developed by the evaluation and certification department of France Education International. It is a test that allows you to quickly and accurately evaluate your level of French. It is aligned with the competency levels of the Common European Framework of Reference for Languages (CEFR) and has the added advantage of offering 12 levels and inter-levels for greater precision.

Class Times

French classes
Morning
 Monday to Wednesday from 9 am to 1 pm
 Thursday from 9 to 12 am
Afternoon
 Monday to Wednesday from 1:30 to 5:30 pm
 Thursday from 1:30 to 4:30 pm
Modules for higher education
Thursday - Online
 from 5:30 to 6:30 pm
Friday - Face-to-face
 from 1:30 to 4:30 pm
 Additional workshops take place certain Fridays

No. of students

French classes
14 students
10/12 students on average and 16 students in case of high attendance
Modules for higher education
18 students
16/18 students on average

Calendar

Program dates
 - From 23/09/24 to 18/04/25
 - From 06/01/24 to 11/07/25

Required level

B1 level



Focus on the program

French course - 360h			
General French	+ Official Ev@lang test	+ Preparation for the TCF exam	+ Taking the TCF exam



Skills course - 96h			
Methodology - 48h		Employability - 48h	
<ul style="list-style-type: none"> Learn to learn Information literacy & critical thinking Note taking Academic methodology 		<ul style="list-style-type: none"> Intercultural experience Public speaking Collaborative and professionalizing project Demonstrate skills: professional tool kit and preparation for interviews 	
+ Introduction to the area of specialty chosen by the student			
60h of training	48h of training	48h of training	25h of training
 ENGINEERS' SCIENCE Maths - Geometry - Chemical Physics	 TRADE & MARKETING Introduction to Marketing - Project management - Case study - Quantitative methods	 GASTRONOMY, ART OF LIVING & TOURISM Culinary industry - French gastronomy - The art of hospitality - Quantitative methods	 DESIGN & CULTURE Drawings - Creativity - Projects and prototypes - Course in a design school

The stages of the program

- Step 1**
Apply for the program
- Step 2**
Obtain admission to the program of your choice, subject to validating your preparatory program
- Step 3**
Come to France to improve your skills!
- Step 4**
Validate your program:
 - Language test level B2
 - Continuous exams
 - Some tests can be organized jointly with your future school
- Step 5**
Get your final admission into the program of your choice

List of documents to be provided to apply for the program:

- registration form,
- photocopy of passport,
- cover letter,
- copy of the last diploma received (copy of the original and official translation)
- 3 transcripts.

Program duration	6 months (24 weeks) of French + Competence course + Introduction to the specialty	
Program dates	- From 23/09/24 to 18/04/25 - From 06/01/24 to 11/07/25	
Minimum level of French	Level B1	
Estimated level at the end of the standard course	B2	
Standard 20 lessons of general french / week	✓	
Intensive 20 lessons of general french + 6 of Culture & current events / week		
Higher Education Preparation Module	✓ + 	
Placement test before the start of the course	✓	
Monthly evaluation	✓	
Monthly one-on-one tutoring	✓	
Attendance certificate	✓	
Preparation for the TCF exams	✓ + 	
TCF official final certification (core sections only)	✓	
Preparation for the DELF A2, B1, B2 or DALF C1 exams	Optional	
DELF A2, B1, B2 or DALF C1 exam	Optional	
Official Ev@lang mid-term test	✓	
Official ECTS transcript and certificate of achievement	✓	
Certificate of Aptitude for Higher Education	✓	
Regular individual or small group coaching	✓	
Delivery of an individualized project at the end of the course		
Admission by application only	✓	
Educational interview + analysis of the student's project	✓	
Orientation service and validation of the file by the admission commissions of the grandes écoles	✓	
Skills pathway: academic methodology and preparation for employability	✓	
Introduction to selected specialties	SCIENCES OF ENGINEERING	TRADE & MARKETING
	GASTRONOMY, ART OF LIVING & TOURISM	DESIGN & CULTURE



Price per session	7 950 €
Administrative fee 140 €	
<i>Option for la Prépa</i>	
Price per additional week	Before and/or after la Prépa program
210 €	



Frequently Asked Questions (FAQ) - La Prépa

What is La Prépa?

La Prépa is a language program that offers a comprehensive training in French as a Foreign Language, along with methodology classes to equip students with the necessary tools for integration into a Grande école.

How many hours of French classes are included in the program?

The program includes 15 hours of French language classes.

Are there any methodology classes included in the program?

Yes, La Prépa also includes 4 hours of methodology classes, which provide students with the necessary techniques and approaches to successfully navigate their integration into a Grande école.

What level of French is required for admission into La Prépa?

Students must have a minimum B1 level in French to be admitted into La Prépa.

What is the language proficiency goal for students completing La Prépa?

Students are expected to reach a B2 level of French proficiency by the end of the program. This level is required for admission into a Grande école in fields such as commerce, culinary arts, design, and engineering.

What is the evaluation method to assess the students' language proficiency?

At the end of the program, students are required to take the Test de Connaissance du Français (TCF) to evaluate their language proficiency. They must achieve a B2 level in order to be eligible for admission into a Grande école.

Can students apply for pre-registration at a Grande école before coming to France?

Yes, students can apply for pre-registration at a Grande école before coming to France.

Is there any specific focus on certain areas of study within the program?

La Prépa aims to provide a comprehensive language and methodology training that is applicable to various fields of study. Students can choose to pursue further studies in commerce, culinary arts, design, or engineering upon successfully completing the program.

How long does the La Prépa program last?

The duration of the La Prépa program is 24 weeks or 6 months with the possibility of adding weeks before and after the training.

What are the benefits of completing La Prépa?

Completing La Prépa not only improves students' language skills in French, but it also equips them with the necessary tools and methodologies to succeed in a Grande école. This program enhances their chances of successful integration into their chosen field of study in France.





During the summer **Etoile Institut and Spéos** offer you the opportunity **to study French and learn about photography**. Depending on your desires, you **select the photography workshop(s) that interest you**.
Ready to take some great photos in one of the most inspiring cities in the world?



The various workshops taught by our expert partner Spéos deal with all the major aspects of modern photography: theory and practice, from past to present.

Key points of Français +

1

A program in partnership with a renowned photography school

For 35 years, Spéos has been the benchmark school in the photography professions and leader in higher education in professional photography in France. Spéos is also internationally recognized and ranked in the Top 5 of the best photography schools in the world for several years by various independent rankings.

2

A program for students of all levels

Beginner, elementary, intermediate and advanced

3

A combined program

French lessons
20 lessons of general French
+ 6 lessons of Culture and current events per week

Photography workshop
15h of workshop per week to choose
• Photojournalism-documentary,
• Introduction to studio photography,
• Introduction to advertising photography

4

A summer program with fixed dates

- Photojournalism-Documentary Workshop in English.
- Introduction to studio photography Workshop in English and in French.
- Introduction to advertising photography Workshop in English and in French.

Class Times

French classes

Morning

Monday to Wednesday - from 9 am to 1 pm & Thursday from 9 to 12 am

Afternoon

Monday to Wednesday from 1:30 to 5:30 pm & Thursday from 1:30 to 4:30 pm

Students are placed in a class either in the morning or in the afternoon depending on their level of French.

Photography workshops

Morning

Monday to Friday from 9.30 am to 12.30 pm

Afternoon

Monday to Friday from 2 pm to 5 pm

No. of students

14 students

- 10/12 students on average
- 16 students in case of high attendance

10 students in photography

- 8/10 students on average
- 14 students in case of high attendance

Calendar

Program dates
Please contact us

Required level

A1 level Recommended

Program duration	1 to 3 weeks
Program dates	Please contact us
Minimum level of French	A1
Standard 20 lessons of general french / week	
Intensive 20 lessons of general french + 6 lessons of Culture and current events / week	✓
20 lessons of photography / week	Photography
Number of hours of private lessons / week	
Number of hours Exam preparation (DELFB2 & DALFC1)	
Placement test before the start of the course	✓
Monthly evaluation	
Attendance certificate	✓
TCF official final certification (core sections only)	Optional
Preparation for the DELFB2 or DALFC1 exams	Optional
Registration for the DELFB2 or DALFC1 exams	

Program locations

French lessons

Etoile Institut
38 Blvd Raspail
75007 Paris

Photography workshops

Spéos
8 rue Jules Vallès
75011 Paris

Price per week

1 week

1 100 €

Administrative fee 80 €



@ Alain-Beulé



@ Pierre-Yves Mahé





General French

Private lessons

A fully personalized course



General French

Combined courses

Groups classes & personalized private lessons

Experience tailor-made lessons that suits individual learning needs. This course **guarantees quick progress and a deep understanding** of French language and culture. Private courses provide exclusive one-on-one, attention from a highly qualified and experience native French teacher. This personalized approach allows **for customizing lessons plan, focusing on specific areas of improvement and targeting individual learning objectives.**

A combined private and group French language course offers **a comprehensive and dynamic learning experience** that blends the benefits of individualized attention with the advantages of interacting with fellow language learners. This unique course structure provides students with **the perfect balance of personalized instruction and group immersion**, fostering rapid progress and creating a supportive learning environment.

Program duration	Tailor-made
Program dates	All year round
Minimum level of French	All
Standard 20 lessons of general french / week	Optional
Intensive 20 lessons of general french + 6 lessons of Culture & current events / week	Optional
20 lessons of photography / week	
Number of hours of private lessons / week	
Number of hours Exam preparation (DELFB2 & DALFC1)	
Placement test before the start of the course	✓
Monthly evaluation	✓
Attendance certificate	✓
TCF official final certification (core sections only)	Optional
Preparation for the DELFB2 or DALFC1 exams	Optional
Registration for the DELFB2 or DALFC1 exams	
Fees	Price per hour
	90 €

Administrative fee 80 €

Class Times

Timetable
Customized

No. of students

Solo - Duo or mini group
on demand

Calendar

Start dates
Customized

Required level

None

Program duration	1 week & more
Program dates	All year round
Minimum level of French	All
Standard 20 lessons of general french / week	✓
Number of hours of private lessons / week	3h
Number of hours Exam preparation (DELFB2 & DALFC1)	
Placement test before the start of the course	✓
Monthly evaluation	✓
Attendance certificate	✓
TCF official final certification (core sections only)	Optional
Preparation for the DELFB2 or DALFC1 exams	Optional
Fees	Price per week
	1 week
	600 €

Administrative fee 80 €

Class Times

Morning
Monday to Wednesday
from 9 am to 1 pm
& Thursday from 9 to 12 am

Afternoon
Monday to Wednesday
from 1:30 to 5:30 pm &
Thursday from 1:30 to 4:30 pm

Students are placed in a class
either in the morning or in the
afternoon depending on their
level of French.

No. of students

14 students
• 10/12 students on average
• 16 students in case of high
attendance

Calendar

Start dates for beginners
15/01/24, 19/02/24, 25/03/24,
13/05/24, 01/07/24, 05/08/24,
02/09/24, 30/09/24, 04/11/24

Required level

From beginner level
to C1 level





Our specialized DELF B2 and DALF C1 Exam Preparation Course **offers comprehensive and focused training** to help ambitious French language learners succeed in these internationally recognized proficiency exams. Designed to equip students with the necessary skills and strategies, this course will **boost confidence and maximize chances** of achieving excellent results in the DELF B2 and DALF C1 exams.

Program duration	2 days
Program dates	01/03/24 & 08/03/24
Minimum level of French	DELF B2 Preparation > Level B1 DALF C1 Preparation > Level B2
Standard 20 lessons of general french / week	✓
Intensive 20 lessons of general french + 6 lessons of Culture & current events / week	
20 lessons of photography / week	
Number of hours of private lessons / week	
Number of hours Exam preparation (DELF B2 & DALF C1)	7h30
Placement test before the start of the course	✓
Monthly evaluation	✓
Attendance certificate	✓
TCF official final certification (core sections only)	Optional
Preparation for the DELF B2 or DALF C1 exams	✓
Registration for the DELF B2 or DALF C1 exams	in addition
Fees	Price per session
	210 €

Administrative fee 80 €
Exam registration fee not included

Class Times

Fridays
From 13:30 to 17:30

No. of students

12 students
• 8/10 students on average
• 14 students in case of high attendance

Calendar

Dates
Fridays
01/03/24 and 08/03/24

Required level

Preparation for DELF B2
Level B1 achieved
Preparation for DALF C1
Level B2 achieved



From / To the airports Orly & Roissy-Charles de Gaulle

Price per transfer	
ONE WAY	ROUND TRIP
120 €	210 €



From / To all stations Paris intra-muros - Private shuttle

Price per transfer	
ONE WAY	ROUND TRIP
100 €	180 €

Practical information

Practical Information

- Minimum age required = 16 years old
- Teaching material included
- 1 lesson = 45 minutes
- 20 lessons = 15 hours
- 26 lessons = 20 hours

Official document

Sending of an official document by a carrier: 80 €

Holiday Closures

2024 holidays:
01/04 - 01/05 - 08/05 - 09/05 -
20/05 - 15/08 - 01/11 - 11/11

End-of-year holiday:
from Saturday 21/12/24
to Sunday 05/01/25



TEF & TCF Exam All students

Price for core sections only	Price for the optional sections	
3 SECTIONS	ORAL EXPRESSION	WRITTEN EXPRESSION
120 €	65 €	55 €

Offer: -10% for Etoile students





To take full advantage of the au-pair experience by following a French course to improve your skills and take an official certificate.

At Etoile Institut, your needs are taken into account: **high-quality classes**, a **friendly atmosphere**, a **schedule adapted to your working hours**. If you are planning to continue on at a French university, our au-pair courses **will give you the necessary tools**.

Key Points

- Several programs to fit your needs
- 2 specific time slots for au-pairs and an online platform accessible 24/7
- 14 to 18 people per group
- Meet other students in our September orientation program consisting of Paris excursions

Our Curricula

	DIPLOMA PROGRAM	CERTIFICATION PROGRAM	ACADEMIC PROGRAM
Program Details	4h of face-to-face group classes + 2h of Culture Online on our digital platform + 4h of homework corrected by your professor for a total of 10h of learning/week. Written exams to validate prior learning are scheduled every 4 to 6 weeks		
Specific DELF B2 or DALF C1 preparation session	✓	Optional	Optional
TCF certification (compulsory tests) + official certificate from the Ministry of Education	Optional	✓	Optional
End of Study Certificate	✓	✓	✓
Access to Culture Online	✓	✓	✓
Access to our digital platform	✓	✓	✓
Orientation Program	Optional	Optional	Optional

Advantages of...

The Diploma Program

In addition to the academic curriculum, this course includes a session specifically dedicated to the preparation of the DELF B2 (Diplôme d'études en langue française B2) or DALF C1 (Diplôme approfondi de langue française C1) exam.

The Certification Program

This program includes a registration for the TCF (Test de Connaissance de Français) exam at the end of the program in our exam center. Students receive an official certification with their results from FEI (France Education International), part of the Ministry of National Education.



Do you want to accompany a group of students on a language trip to Paris?
Entrust us with your program, we will take care of everything.

French Classes

Our group service can accommodate high-school, university and adult groups. The most popular course packages are 15 or 20 hours of classes per week. Students can attend classes in international groups or be in customized closed groups. We work with language-travel agencies and directly with schools **from all over the world**: Germany, Argentina, Australia, China, UAE, Ecuador, Spain, Denmark, Ghana, Switzerland, etc. Classes are **tailor-made** by the teachers in charge of the group based on the online placement test completed before students' arrival. At the end of the session, students receive a **certificate** for completed class hours.

Additionally, we offer a range of services from French classes and accommodation to the organization of cultural activities in Paris (and more broadly in France depending on the group's needs).

Our Philosophy

Etoile Institut welcomes students in fun, high-quality French language classes.

Classes are appropriately adapted to each type of group and calibrated according to their needs, expectations, interests, duration of studies and general goals for their stay.

The number of students in these classes is determined in partnership with the agency or school and are taught by qualified teachers who are experienced in teaching French as a foreign language.

Pedagogical Objectives

The main objective is **to ensure the rapid improvement** of students' oral and written language skills. The courses, in line with the visits, excursions and cultural activities carried out in parallel, allow students **to consolidate and deepen their knowledge** and **optimize their oral production and comprehension skills**.

Etoile advocates an innovative and proven methodological and pedagogical approach. Classes, entirely designed and taught by our teachers (materials, activities, authentic documents, videos, etc.), thus meet **the needs and level of each individual**, always with a view to implementing a differentiated pedagogy.

Class content emphasizes:

- **Consolidation of linguistic structures** and revision of each student's language skills
- **Development of autonomy** in a foreign language through lexical enrichment and the acquisition of idiomatic expressions
- **Discovery of a culture**, a country and, above all, its capital where students are staying

At the end of their stay, students can take **the official TCF exam** from France Education International or **the TEF exam** from the Paris Chamber of Commerce, which assess their knowledge of grammar and vocabulary as well as their oral and written comprehension.



Housing for Groups

In the residence students are **accommodated on a half or full board** basis in rooms equipped with toilets and bathrooms. Students can be accommodated in rooms with 2 to 6 beds. Teachers are accommodated in a single rooms. The rooms are cleaned everyday. Sheets and towels are provided. Student staying **with host families through Etoile Housing**, our dedicated accommodation service, are housed in Paris or the surrounding suburbs, in rooms of 2 or 3 beds, with breakfast and dinner as an option. Meal baskets can also be offered for lunch.



All Etoile Institut students can take an official certification at the end of their course in our approved examination center. This is the case for students enrolled in the Le Certifiant program, which includes registration and taking the TCF (Test de Connaissance du Français), a test recognized by the Ministry of Higher Education and the Ministry of Culture.

In addition, each year our center welcomes candidates to take a wide range of exams designed by France Éducation International, a public operator for the Ministry, as well as exams developed by the Paris Île-de-France Chamber of Commerce and Industry.

Tests designed by France Éducation International are offered in our center:

The TCF Integration, Residence and Nationality

The TCF Integration, Residence and Nationality (IRN) is a certification for people who wish to apply for:

- An application for French nationality
- An application for a long-term residence permit
- A validation in the framework of the OFII citizen course

The TCF Quebec

The TCF Quebec is a test requested by the Quebec authorities as part of an application for a permanent visa. It is required for all nationalities as well as for French and French speakers.

The TCF Canada

The TCF Canada is a test designed for all persons who need to validate their level of French in the context of economic immigration to Canada or obtaining Canadian citizenship.

The TCF for the general public

The TCF for the general public meets several needs. It can be taken to validate one's level of French for professional, personal, or academic reasons.



ĒV@LANG

Ev@lang is a test offered entirely online that allows for the positioning in the foreign language of candidates in a situation of job search, professional advancement or placement in a foreign language course.

Opinion ★★★★★

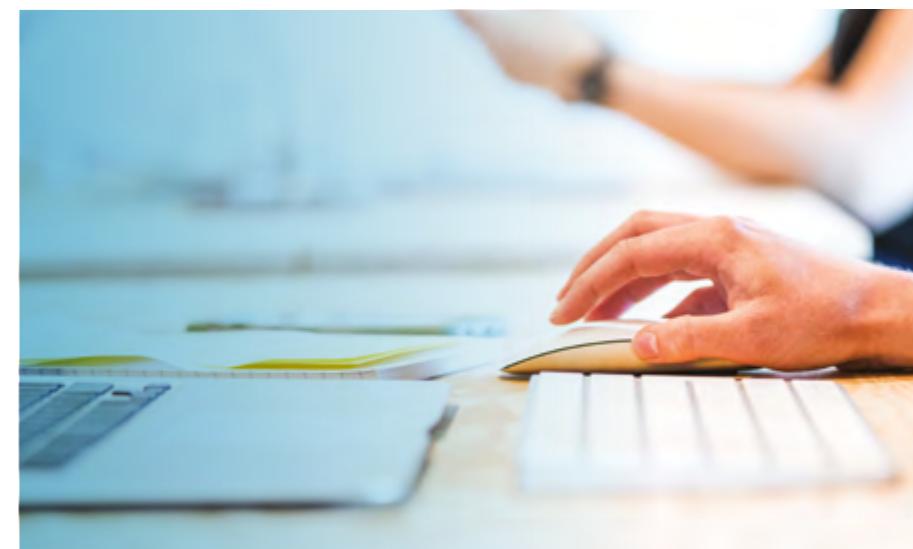
« I would like to congratulate and thanks Etoile team for the welcome received for the candidates. Very good care with explanations on the procedure, the marking and the use of computer by the examiners. I am 76 years old and I was apprehensive about this exam but after having had explanations everything went smoothly. Moreover, the means made available to us are at the top level. The staff is very dedicated, warm and attentive to the candidates. I highly recommend Etoile Institut. »

Ali,
TCF Integration Residence & Nationality candidate
(Google review)

Tests and diplomas designed by the Paris Chamber of Commerce and Industry offered in our center:

The TEF (Test d'évaluation de français) is a placement test that measures the level of French language skills. Like the TCF, it is recognized for admission to a university, obtaining French nationality or a resident card with the TEF Integration, Residence and Nationality, immigrating to Canada and obtaining Canadian citizenship with the TEF Canada.

The Diplomas of Professional French (DFP) promote competence in a particular field of activity and are an added value to a CV. These diplomas are academically recognized by universities and nationally recognized in various countries (France, Switzerland, Italy, Lithuania, Czech Republic...). A wide range of diplomas according to your objectives: DFP Business, DFP Legal, DFP Tourism-Hospitality-Restoration, DFP Tourism-Hospitality-Restoration and DFP International Relations.



Our Partners



Opinion ★★★★★

Very good place to pass the TCF. The lady in charge of the oral part was very polite and professional, another lady supervising the written part, listening on the computers was also good. Results delivered by post within 2 weeks, so maybe if you need them fast, better pick them up directly from their office, the post works a little slow :)

Hanna,
TCF Integration Residence & Nationality candidate
(Google review)

Opinion ★★★★★

Welcoming and kind staff. A good center to pass the TEF, I would like to thank and recommend the school after having passed a test with them very warm welcome thank you.

Idrami,
Candidate for the TEF
Carte de résident
(Google review)





Professional Training

To be in tune with a job market...

Etoile is a professional training center (registered under number 11 75 52880 75 with the Préfet de région d'Ile de France). Specialized in teaching French as a Foreign Language (FLE) and preparing students for various tests, diplomas and certifications, our center is an ideal partner to accompany your professional projects.

Needs Analysis

Finding the right program begins with an individualized evaluation of the candidate's objectives. The candidate takes the Ev@lang placement test (developed by France Education international) along with a written test and interview. A program will then be proposed to the candidate which will take into account his or her needs, objectives and choice of official certification.

Our Competencies

Unlike traditional professional training centers that offer all types of training, Etoile is specialized in teaching French as a Foreign Language (FLE). You will thus benefit from 50 years of experience in teaching FLE and from the expertise of our teaching team. Our mastery of teaching French as a Foreign Language is reinforced by our accreditation for official exams, including the TCF from the France Éducation international, the TEF and Professional Business French Diplomas from the Chambre de Commerce et d'Industrie de Paris Ile-de-France, as well as officially recognized prep classes for the Diplôme de Compétence en Langue (Ministère de l'Éducation nationale); unique assets in the world of professional training.

Our center offers comprehensive French language training that takes into account not only the specific professional objectives of each candidate (including the specificities of their professional world) but also their specific language needs.



End-of-Program Certifications

Professional training financed by the State requires passing a recognized certification. The choice the certification will be studied with the trainee during the analysis interview to help orient the trainee toward the option best suited to their needs and objectives.

L'Etoile is an official exam center for the following certifications: TEF, TCF and Diplômes de Français Professionnel (DFP). Trainees in vocational training can take these certifications directly in our Center. For certifications such as DELF/DALF or DCL FLE which will take place outside our Center, we take care of the registration to facilitate the trainee's procedures.

Our References

Pôle Emploi
Afp
Forco
Agefos
Adpi
Altédia
Acoform
Ingeus
Opcalia
Opcacif...
FAFIEC
INTERGROS
FIFPL
UNIFORMATION
FONGECIF IDF

Opinion ★★★★★

I would like to thank the entire team at "L'ÉTOILE" for their professionalism and support. A big thank you to Anne and Nathalie who are excellent teachers. I was able to obtain in the space of 3 months a diploma in French secretarial. 2 months later I was able to get a job that met my expectations.

Thank you for giving me confidence and motivation!

Yulia
(Google review)



Accommodations

To find a cosy nest!

To guide you throughout your experience in France, Etoile Housing is a service that we have developed to **offer you the right accommodation during your language studies!**

Homestay

Etoile Housing has specialized since its beginning in homestay accommodation. Over the years, we have created a network of families based on **mutual trust** and **sharing culture**. It is a personalized service that guarantees a quality of life and a **total immersion**.

All families are carefully selected according to their accommodation (close to public transportation), large enough to provide a bedroom, equipped with a desk, storage space and a wifi connection. The bathroom is usually shared with the host family. The kitchen is considered a common living space.

The **meal plans** offered range from room only to half board. We are here to provide advice on the most suitable formula according to the pace of life, the duration of the stay and the desired level of autonomy.

Residence

We offer places in various Parisian residences providing **furnished and equipped apartments** for students and young professionals. The residence are located in safe neighborhoods close to a metro station..

Independant studio

Our apartments are situated all throughout Paris in safe and lively neighborhoods, surrounded by bars, restaurants, shops and other conveniences. Within about 5 minutes' walk from public transportation. These are **fully equipped apartments** that have been optimized for maximum comfort. These apartments are ideal if you like your **independence**.

Testimony of one of our host family students

I couldn't imagine a better family to live with while spending my semester here and I'm so grateful to them for welcoming me into their family and really taking the time to make me feel included.

It has been such a great experience for me to get to share dinners with a family that clearly loves each other so much.

They laugh all the time and will usually repeat their stories twice--once at normal speed, and then once at a slowed-down pace, so that I can understand it, too. If I had to spend more than a semester away from my family back in the U.S., I'd want it to be with this host family, because I think they're the closest thing I'll get to a second family

Erin
USA





Accommodations

To find a cosy nest!

Distance to the school
Available all year around
Arrival on Sunday
Departure on Saturday
Arrival and departure possible every day
Age
Women only

Private room
Surface area
Private shower
Private restrooms
Laundry

Shared kitchen
Cafeteria & bar

Wifi
Internet subscription
Piano

Tarifs

*Open to men and women in July and August

Host family	
Paris and close suburb	
40 minutes maximum	
✓	
✓	
✓	
✓	
Arrival and departure possible every day	
Age	
From 16 years old	

✓
= 10m ²
On request
On request
✓

✓
On request

Price per week	
Single Room	245 €
Single room + breakfast every day	308 €
Single room + breakfast + 1 dinner/week	322 €
Single room + breakfast + 3 dinners/week	350 €
Single room + breakfast + 5 dinners/week	378 €
Single room + breakfast + 7 dinners/week	406 €
Private bathroom (according to availability)	+ 25%
Special diet (except vegetarian and according to availability)	+ 20%
Additional night (Before arrival on Sunday AND/OR after departure on Saturday)	70 €
Additional cost from 26/05/24 to 24/08/24	+ 25%

Administrative fee 80 €

Weeks run from Sunday to Saturday for the first week & Saturday to Saturday for the following weeks

Fiap residence	
30, rue Cabanis - 75014 Paris	
25 minutes	
✓	
✓	
✓	
✓	
Arrival and departure possible every day	
Age	
From 18 years old	

✓
= 11m ²
✓
✓
✓

✓

✓
✓

Price per night	
Single room + breakfast	97 €

Administrative fee 80 €

Agefo residence	
4, rue Tessier - 75015 Paris	
20 minutes	
✓	
✓	
✓	
✓	
Arrival and departure possible every day	
Age	
18 - 27 years old	
From September to June (Men & women in June, July & August)	

✓
= 11m ²
✓
✓
✓

✓

✓
20 € / month
✓

Price		
Single room		
1 to 4 weeks	Weeks run from Sunday to Saturday for the first week & Saturday to Saturday for the following weeks	340 € / week
5 to 12 weeks		320 € / week
13+ weeks		290 € / week
Additional night	Before arrival on Sunday AND/OR after departure on Saturday upon availability	70 € / night
Additional cost from 26/05/24 to 24/08/24		+ 25%

Administrative fee 80 €



Package

Le Diplômant Academic Package

Tuition fees + Accommodation in residence

Program dates:

from 23/09/2024 to 28/03/2025

(Excluding Christmas holidays and with an exam week at the end)

Residence dates:

from 22/09/2024 to 29/03/2025

(Including Christmas holidays)

Cost of the Academic Package:

11 980 €

This package includes :

- Administrative registration fees,
- Tuition fees,
- Cost of final exam for official diploma,
- Official transcript of marks,
- Certificate of completion with ECTS credits,
- Accommodation in a student residence,
- housing insurance.

- Refundable housing security deposit to be added: 500 €
- Internet subscription to be paid directly at the residence: 20 €/month

- Additional weeks for housing can be added at a cost of 290 € a week (subject to availability)
- Additional week of classes can be added at a cost of 210 € a week

Insurance & Security deposit

	Security Deposit	Housing Insurance
		Multi-risk home insurance, civil liability (MANDATORY).
1 to 3 weeks	250 €	80 €
Over 3 weeks	500 €	190 €

French Health Insurance (Sécurité Sociale)



Our team can provide an assistance service for Health-insurance registration.

Do not hesitate to contact us.

The School

Our invitation to live and study French in Paris...

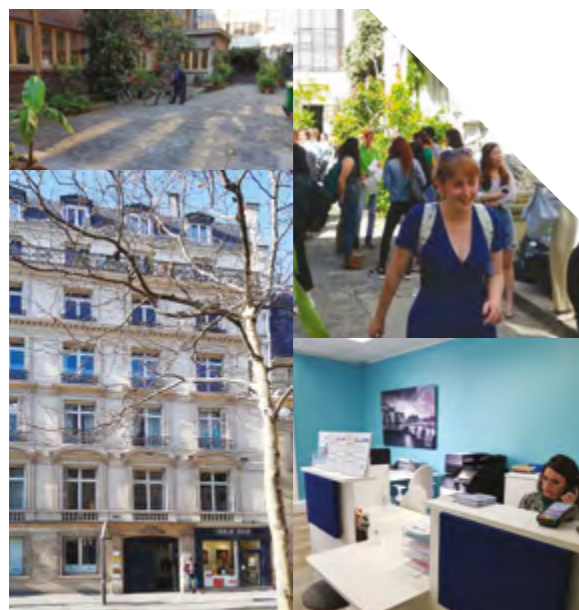
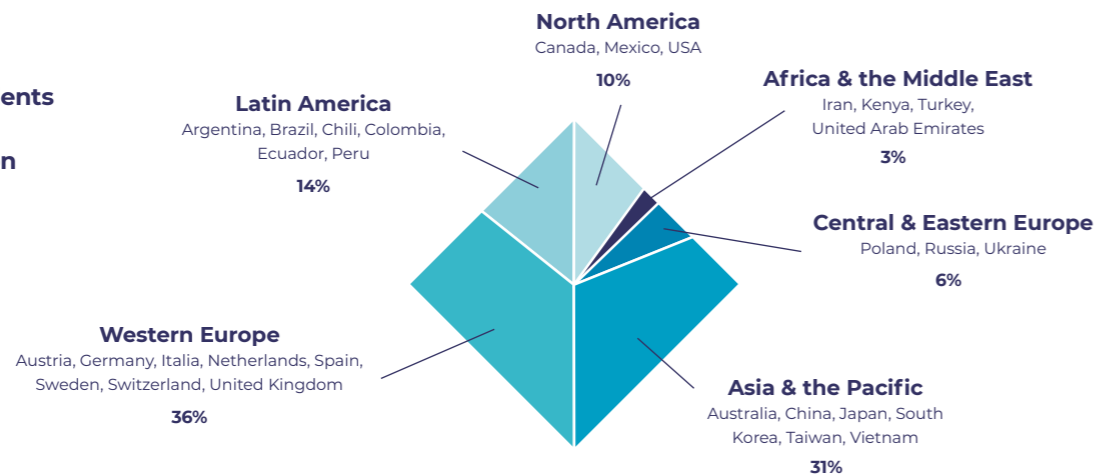
With **nearly 50 years' experience** in teaching French as a foreign language, Etoile Institut offers classes adapted to **the specific needs** of individuals and groups, for students of all levels

Today, Etoile is renowned as a private higher-education institution.

Every year since 1971, we welcome nearly **1,000 students coming from more than 60 different countries.**

Whether for personal enrichment, higher-education preparation or integrating a professional field, **our entire team accompanies you in the success of your project.**

Nationalities of students at Etoile in 2022 by geographic region



Etoile Institut

In a beautiful flowering courtyard, **the Institut's historic site** is an oasis of calm in **the artistic neighborhood of Saint-Germain-des-Près.**

Classes take place in a lovely building that was once **the Théâtre de Babylone**. Students are a few meters away from the famous **Bon Marché department store**, built in 1869, the luxurious **Hôtel Lutétia**, an Art Nouveau jewel, **the Maillol Museum** and **Boucicaut Square**.

After classes, students can enjoy the local ambiance **in chic cafés**, bakeries and restaurants where the Parisian Literati meet.

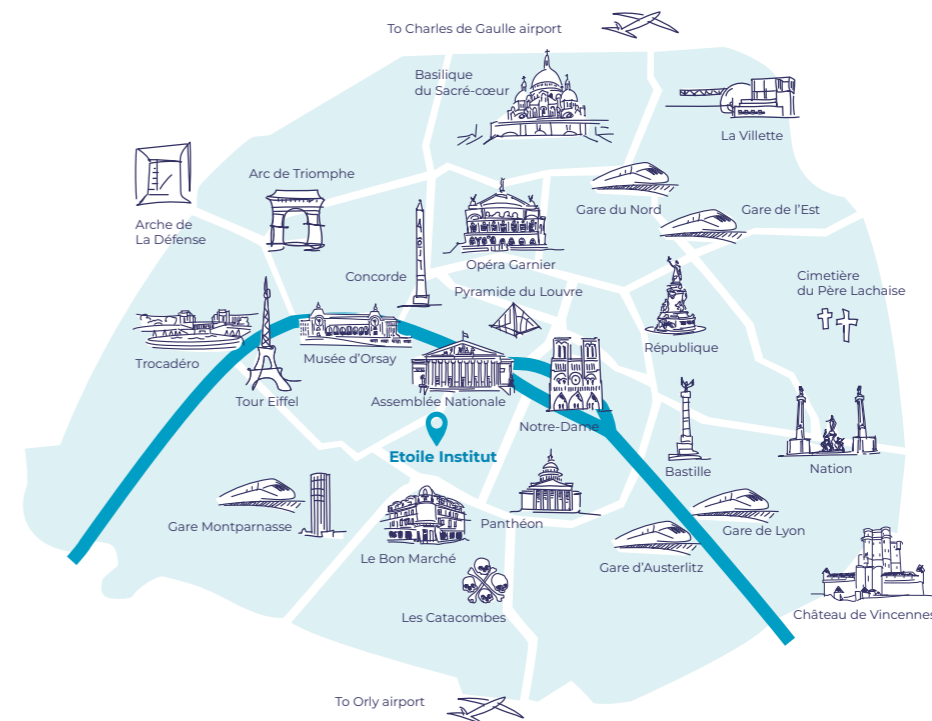
M lines 10 & 12, Sèvres-Babylone station
line 4, Saint-Sulpice station

A site in the heart of Paris and close to tourist spots...

Located **5 minutes** from Montparnasse train station, **20 minutes** from the Gare de Lyon and Austerlitz train stations and **35 minutes** from the Gare du Nord and Gare de l'Est train stations.

Close to the Grande Épicerie du Bon Marché, the Hotel Lutetia and Square Boucicaut.

A few minutes walk from the Maillol, Rodin and Orsay museums and of the churches of Saint-Sulpice and Saint-Germain-des-Près



Our Pedagogy and Curricula

Quality classes, recognized teaching methods; Etoile Institut de Langue is a private higher-education institution, registered with the Rectorat de Paris (National Education Ministry) under number 384/07-16. Etoile's French Language for Foreigners (French Language and Culture) program is **recognized to be taught at the higher-education level since 2000.**

Our Methodology

Our teaching **method is communicative** and based on students' active participation. Our teachers **custom-create** their classes and use a **large range of authentic documents**.

After each class, students have **homework to do** which is turned in the next day and corrected by the teacher. Students therefore **develop both oral and written competencies**, which allows them to take official exams (TEF, TCF, DELF, DALF).



Our Pedagogical Engagement

Native French professors holding specialized higher-education diplomas specifically oriented to **the didactics of teaching** French as a foreign language (FLE).

Classes aligned with the Common European Framework of Reference for Languages (CEFR) that reflect French and France as they are today.



A strong commitment to quality: Etoile Institut **has earned the Qualité FLE Label** with 3 stars (the maximum) for all audited areas: classes, programs, teaching staff, administration, facilities, management. The label is given by the French government (Ministries of Culture, Higher Education and Foreign Affairs).

#FrenchLife

French culture and civilization have a central role in our classes: trips to museums, neighborhoods, parks and gardens; tastings of regional specialties; thematic visits, etc. are regularly integrated into our classes and **included** in tuition costs.

Thanks to our partners, students can **participate in cultural activities** that encourage friendship with foreign and local students.



Our Programs

General French Curriculum

L'Initial

A short-term program of 15 or 20 hours per week for rapid acquisition of the 4 language skills: listening, reading, speaking and writing

Le Certifiant

A general French course in Standard or Intensive formula for a medium or a long-term study completed with the award of an official exam the TCF (Test de connaissance du français)

Le Diplômant, French Language and Culture Short Program

A long-term program to prepare the DELF (Diplôme d'Etudes en Langue Française) or the DALF (Diplôme Approfondi en Langue Française)

La Prépa

A program built to help students enter a university or Grande École with our partner Quantum Pathway Academy

Our Official Certifications

As a registered **TCF, TEF, DFP and Ev@lang** center, our students can receive a certification that **officially recognizes** their level in French (required for example to enter the French university system or finalize professional training).

TCF (Test de connaissance du français), TEF (Test d'évaluation du français), DFP (Diplômes de français professionnel) and Ev@lang center.



Private Classes

For a personalized and exclusive learning experience

Combined Classes

The dynamic of a group class and the flexibility of a private class

Classes for Groups

In international classes or in closed groups for a tailor-made program

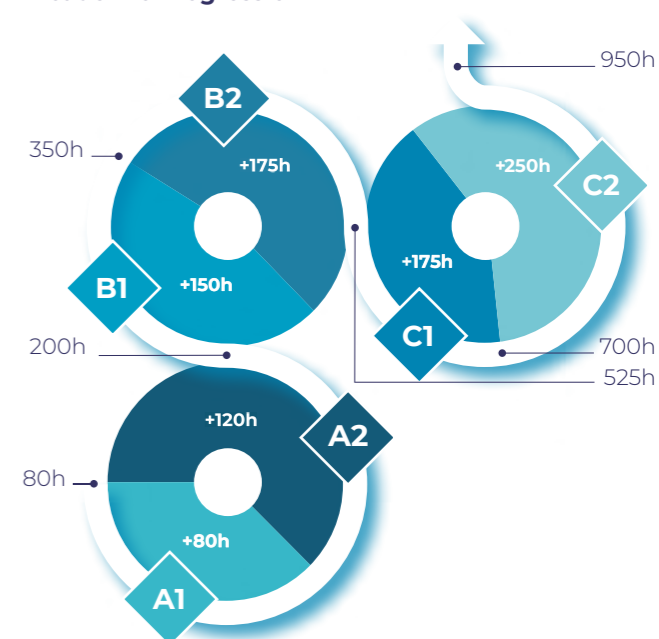
Français +

A special summer program in partnership with Spéos in which students study French and photography

Exam Preparation

A rigorous and targeted program for students taking DELF/DALF exams

Academic Progression*



* Based on the Common European Framework of Reference for Languages





Enjoy the Etoile Experience

Stay in touch and up to date...

Follow us for more **#Frenchlife**



Facebook

facebook.com/EtoileGroupe



Instagram

instagram.com/etoilegroupe



Blog

etoilegroupe.com

Information & Registration



Phone number

+33 1 45 48 00 05



Email

contact@etoileinstitut.com



Address

38, boulevard Raspail - 75007 Paris

ETOILEGROUPE

ETOILE Institut

ETOILE Certifications
ETOILE Housing
ETOILE Formation Pro

Etoile Institut de Langue - Private institution of higher education

Registration number at the Rectorat de Paris: 384/07-16

Professional training number: 11 75 52880 75

38, boulevard Raspail - 75007 Paris - Tél: +33 1 45 48 00 05 - contact@etoileinstitut.com

www.etoileinstitut.com

[flə]

QUALITÉ

FRANÇAIS LANGUE ÉTRANGÈRE

Label officiel délivré par l'État

■ RÉPUBLIQUE FRANÇAISE