



**B
E
Y
O
N
D**

**L
A
N
G
U
A
G
E**



E
LAI

BEYOND LANGUAGE





Contents

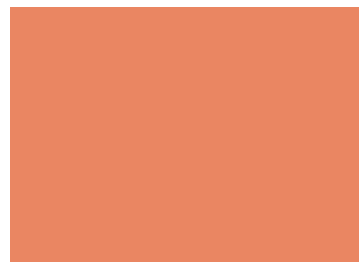
• Why the Harvest English Institute?.....	06
• New Jersey	10
• Florida	14
• California.....	18
• Levels	24
• Core course	26
• TOEFL® Test Preparation	29
• Field trips	32
• Become a student.....	33



WHY THE HARVEST

OUR MISSION

“The Harvest English Institute has as its main objective to integrate students with the English language, American culture and way of life, providing them with the skills and knowledge to become linguistically proficient.”





ENGLISH INSTITUTE?

At the Harvest English Institute, learning English comes as an easy task from your very first day. Our teaching methodology will offer you a unique linguistic and cultural experience, by immersing you into the American way of life. All of these opportunities are offered in a relaxed and modern environment, which will facilitate your learning experience.

We have welcomed thousands of students from all over the world!



8.000
Graduated Students



65
Nation



5+
Qualities

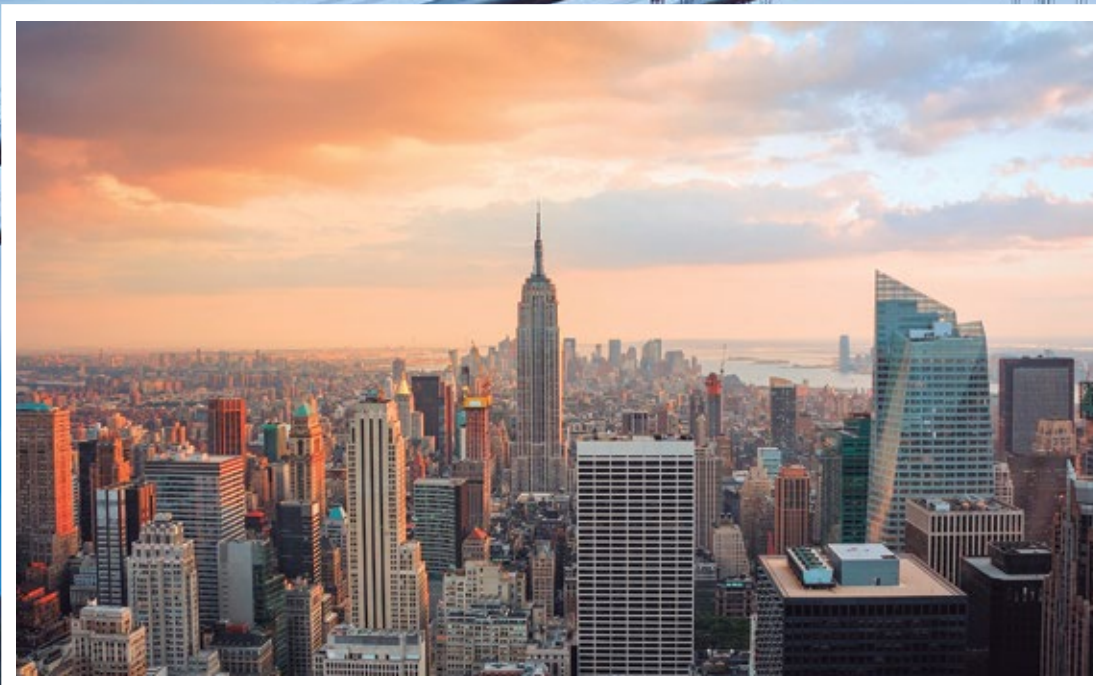


Cultural
Immersion

NEW JERSEY

New Jersey is home to the Statue of Liberty and many other monuments, the Giants Stadium, museums, parks, forests, beaches, theaters, and casinos. To the Northwest, you will find mountains to ski; to the South, the beautiful beaches and Atlantic City. Our campuses are strategically located near big cities, where you will find plenty of transportation and activities. The New Jersey and the New York areas have many universities nearby such as Rutgers, Drew, Seton Hall, and NYU.

We are minutes away from Manhattan!





“

Learning English for me means more than learning words to speak and listen. I chose Harvest English Institute because you learn more, for example, there are good teachers and they only speak English, the students are great, and the school setting is very nice. So, I think here is the best for everyone. Thanks, Harvest!"

Fu Xin - China

”

NEWARK

CAMPUS



As a point of entry for Manhattan, New Jersey's largest city exudes diversity. It is a short walk to the Red Bulls soccer stadium, the Stanley Cup winning hockey team the Devils, the New Jersey Performing Arts Center, and the Prudential Center, where many concerts and sporting events are held. Come enjoy what Newark has to offer, from sports to the exciting nightlife, all easily accessible from the Newark Harvest campus.



LONG BRANCH

CAMPUS

Our Long Branch campus is located south from New York City on the famous Jersey shore. It has one of the most beautiful beaches as well as an incredible promenade by the boardwalk in the country. Rich in culture, with beautiful nature, and packed with activities, Long Branch is a short train ride to New York City and everything the Big Apple has to offer.

FLORIDA

As one of the fastest growing cities for business in the United States, Orlando provides students with an incredible potential to develop their linguistic skills with our qualified teachers in a city where people come from all over the world. But one thing is guaranteed: Orlando speaks English!

Florida has the perfect climate, the best in entertainment, shopping, and gastronomy.

Less than 5 minutes from Universal Studios.





ORLANDO

CAMPUS



Our campus in Orlando is vibrant, modern, and offers the latest technology in the classroom. The location is in the heart of the International Drive and in the center of the Florida High Tech Corridor. We are in the "Lakehurst Building" built for NASA, home to FCU, the SOAR Global Institute, and many other international companies. We are just a few miles away from important companies, like Lockheed Martin, and attractions like Universal Studios, Wet'n Wild, Festival Bay, Disney Parks, shopping centers, restaurants, and the Market Place. It is also close to hotels, restaurants, and meeting places in Orlando. It is minutes from the Convention Center. Students that enjoy soccer games have easy access to the Orlando City Stadium, and hundreds of other free activities.



Packages combining **study and fun** are available for individuals and groups.

CALIFORNIA

California is the jewel of the west coast most populous state in the United States. People here know how to enjoy the pleasant climate and perfect entertainment.

Los Angeles is one of the most well-known cities in the world. It provides students with multiple options to develop their linguistics skills. In our campus, a qualified team wait for people who are looking forward to enjoying life and learning English.

The world capital of cinema!







Our Los Angeles campus is vibrant, modern, and offers the latest technology to help students in the learning process. Here students can take advantage of all the possibilities LA has to offer. The HEI is located on Wilshire Blvd. which is one of the principal east-west roads in Los Angeles. It connects five of Los Angeles major business districts, as well as Beverly Hills. The campus is easily accessible by bus, train, and car.

The HEI is just few miles away from Hollywood Walk of Fame, Griffith Park, Little Tokyo, Los Angeles County Art Museum, and hundreds of incredible cultural attractions.

Los Angeles has more museums and theaters than any US city, and a thriving music and gallery scene. A Los Angeles Philharmonic performance at the Walt Disney Concert Hall is a must-see, as well as an outdoor concert at the Hollywood Bowl. Museums, music, theatre, dance, gardens, architecture, urban art, fashion, literature, film and television... LA is a myth.

LOS ANGELES

CAMPUS



Packages combining **study and fun** are available for individuals and groups.



An aerial view of New York City at sunset. The sky is a mix of light blue and warm orange. The city's skyline is visible, with numerous skyscrapers and buildings. In the background, the water of the harbor is visible, with the Statue of Liberty on Liberty Island and other islands in the distance. The overall scene is bathed in the golden light of the setting sun.

**HAVE YOU EVER DREAMED OF COMING
TO THE U.S. AND STUDYING ENGLISH?**



LEVELS

01 ● ○ ○ ○ ○ ○ ○

Upon completion, students should be able to understand and use familiar vocabulary, expressions and basic grammar structures as well as interact in a simple way provided the other person talks slowly and clearly and is prepared to help.

02 ○ ● ○ ○ ○ ○ ○

Upon completion, students should be able to understand sentences and frequently expressions that are related to areas of most immediate relevance. Students will master the main points of clear standard input on familiar matters regularly encountered in work, school, leisure, etc.

03 ○ ○ ● ○ ○ ○ ○

Upon completion, students should be able to understand and produce simple connected speech and text on topics which are familiar or of personal interest. Students will also be able to describe experiences, and briefly give their reasons and explanations for personal opinions and plans.



04 ○ ○ ○ ● ○ ○

Upon completion, students should be able to communicate and exchange information on familiar topics of the student's interest beyond immediate needs. They will understand more familiar situations that are likely to arise when requested to use the target language.

05 ○ ○ ○ ○ ● ○ ○

Upon completion, students should be able to understand the main ideas of complex text on both concrete and abstract topics. They should be able to understand and use the target language more accurately and fluently.

06 ○ ○ ○ ○ ○ ●

Upon completion, students should be able to understand a wide range of demanding communication situations in social, academic and professional settings and produce clear, well-structured, detailed speech and text on complex subjects, showing controlled use of organizational patterns, connectors and cohesive devices.

CORE COURSE

The IEP - Intensive English Program - is subdivided into six levels and makes English unforgettable through multiple exposures to language, numerous opportunities to practice it, and an intensive recycling of the vocabulary.

It prepares students to communicate in English with a diverse array of speakers from around the world, who have a wide range of native and non-native accents.

An emphasis on cultural fluency enables students to navigate the social, travel, and business situations that they will encounter in their everyday lives.



"Working here at Harvest English Institute is fun. We get a diversity of students, so, it's always interesting. It's a place where students learn and meet new people, and make friends."

Carolina Pires - Brazil



SUPPLEMENTAL SKILL COURSES

• Pronunciation

This course helps students recognize and produce the sounds of words through rhythm, stress, and intonation patterns of American English. As students progress, they will build linguistic independence which will motivate them to practice their conversation skills outside the classroom.

• Business English

Our Business English course targets the acquisition and improvement of the student's linguistic skills. It is designed for intermediate and advanced students. It is carefully balanced and structured to teach non-native adult speakers and to help them gain confidence speaking English in a professional environment. By the end of the course, students will be recognizing and using a wide range of business communication structures and vocabulary, enabling them to function in an ever-demanding business world.

• Cultural Immersion

The Harvest English Institute offers weekly Cultural Immersion classes to assimilate students into the American culture and way of life. These classes are specifically designed to empower students with knowledge and confidence to live the true American experience.

• Writing

This course helps students improve their writing skills through an in-depth analysis of models that set the stage for development by using corpus-based vocabulary, collocations, and phrases, as well as detailed information on the grammar of writing. It also addresses plagiarism and helps to ensure that students can use sources and highlight their own thoughts.

• Conversation

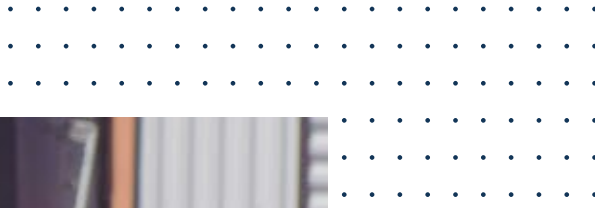
This course is designed to make students sound different from a book! Learn strategies designed to open and close conversations, ask for advice, and work on the flow of conversation to sound more natural. The course applies techniques that remove bad speaking habits that make people sound mechanical. The everyday topic help students reach success in real life situations while being confident, clear, and assertive and getting their point across.

OUR METHODOLOGY

Both the Communicative Approach and Principled Eclecticism are combined to create a coherent approach to deliver the program's curriculum by addressing different parts of the students' needs. The Communicative Approach governs our methodology as it relates to the students' needs of learning English as a communicative tool and way to negotiate meaning in life-like social settings. It also denotes the teacher as a facilitator of language in a student-centered classroom. We have additionally adopted Principled Eclecticism because it aligns with those same ideas, but goes further in encouraging teachers to analyze their students' individual needs (in terms of learning styles, strengths and weaknesses with specific topics, life goals, interests, culture, etc.) and tailor instructional techniques to fit those analyzed needs as well. Overall, the Communicative Approach meets the students' needs in terms of the nature of language learning while Principled Eclecticism meets their assessed individual needs.



START PREPARING
YOURSELF TODAY



TOEFL® Test Preparation

• What is TOEFL®?

It is the most widely accepted English-language test in the world. TOEFL® is an abbreviation for Test of English as a Foreign Language. This test measures your ability to use and understand English at the university level. It evaluates how well you are able to combine your listening, reading, speaking and writing skills to successfully perform academic tasks. TOEFL® is accepted in more than 8,500 institutions around the globe in 130 countries.

• How is it divided?

In the TOEFL® exam, four-language skills are tested: reading, listening, speaking, and writing.

TOEFL® exists in two versions:

- iBT, the internet based TOEFL®; and,
- Paper based. (Offered only in places where testing via internet is not available)

These days, most of the TOEFL® centers use the internet based TOEFL®.

How does Harvest English Institute prepare you for the test?

We will provide you with a very comprehensive study, focused on techniques, strategies and on how to master the components the test requires. Our long experience in preparing students to take the test has given them an advantage, as we have attended to their educational needs with a strong focus on success.



BECOME A STUDENT

The Harvest English Institute is authorized under Federal law to enroll non-immigrant alien students. All forms, rules, and regulations can be found on our website.



“

English is the language of medicine in the world. In order to be professional, in order to treat people better, you need to know about all the discoveries, all the researches that are made all over the world. And the only way to know about them is to read or hear about them in English because that's the international language. I heard about Harvest Institute from my friends who studied here before me. I practice English every day here and that's the biggest positive thing for me here. I met a lot of great people and made a lot of friends. They all come from different countries and it's actually interesting to learn more about their cultures, even though we all are trying to learn more about the American culture.

- Surkhay Bebiya

”



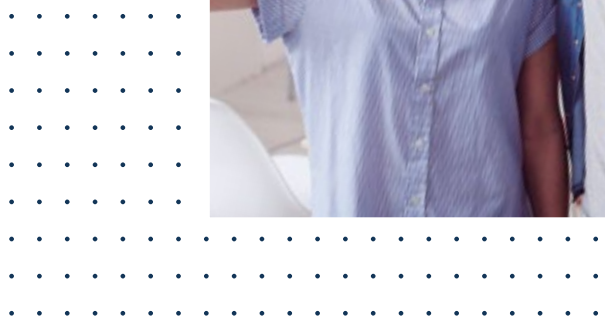
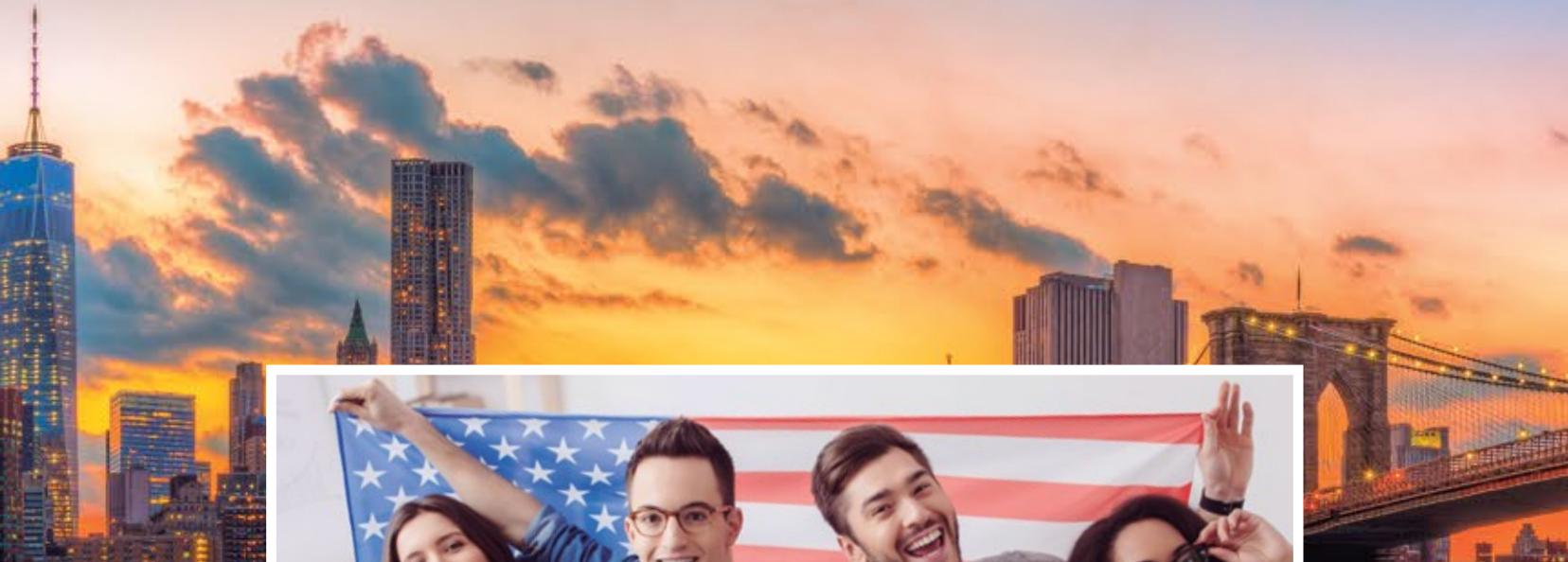
HOW TO OBTAIN AN I-20 FORM

If you reside outside the United States, you must meet specific requirements before being considered for admission to the Harvest English Institute. No admission decision will be made until the application is complete.

A completed application includes:

- Completed and signed Out of Country Application Form;
- Copy of a valid passport;
- Evidence of financial ability to pay for studies and living expenses while in the US (self or sponsored);
- If self-sponsored: a copy of most recent bank statement (checking or savings) showing enough funds;
- If sponsored: a copy of most recent bank statement (checking or savings) showing enough funds, a completed and signed Affidavit of Support which is part of the Application Form;
- Payment of application fees indicated on the Out of Country Application Form, which are;
- Processing fee;
- Airport pickup (optional);
- Housing hunting fee (optional);
- I-901 SEVIS fee (optional)*;
- Mailing fee;
- First four weeks of total program.

After we receive all of the required documents, allow 5 business days for document processing. If any documents are missing you will be notified by the contact information provided on the Out of Country Application form. Otherwise, we will send your official acceptance package with the I-20 Form by international courier to the mailing address that you provided. If you are represented by an Agent, your acceptance package with the I-20 Form will be sent to the agent's address. After you receive your I-20 form, follow the US Embassy/Consulate's instructions to schedule an interview for your F-1 student visa application. It is important to apply as far in advance as possible. Many consulates recommend that appointments be made no more than 90 days from the intended date of travel.



Send all documents to Harvest English Institute:

• **Newark Campus** (Main Campus)

128 Wilson Ave, Newark, NJ - 07105
harvest@harvest.net
Phone: +1-973-274-1888

• **Orlando Campus**

5950 Lakehurst Dr, Orlando, FL - 32819
orlando@harvest.net
Phone: +1-407-985-29998

• **Orlando Campus** (Auxiliary Campus)

8570 Palm Pkwy, Orlando, FL - 32836
orlando@harvest.net
Phone: (407) 777-4770

• **Long Branch Campus**

339 Broadway, Long Branch, NJ - 07740
lb@harvest.net
Phone: +1-732-728-0100

• **Los Angeles CA**

3550 Wilshire, Suite 1050, Los Angeles, CA - 90010
la@harvest.net
Phone: +1-213-421 3330

PREPARE AND BRING TO YOUR VISA INTERVIEW THE FOLLOWING:

- Passport valid for at least six months;
- I-20 Form (signed);
- School admission letter;
- Completed visa application forms;
- Receipt for the visa application fee;
- Receipt for the SEVIS fee;
- Financial evidence that shows you have sufficient funds to cover your tuition and living expenses during the period you intend to study;
- Any information that proves that you will return to your home country after finishing your studies in the United States. This may include proof of property, family, or other ties to your community.



If visa is granted, you must pay for your course in full before coming to the United States. Upon your arrival in the United States, you are required to report to the Harvest English Institute and take a Placement Test (written and oral) in order to proceed with registration and receive Orientation Day date.

Visit our website at www.harvest.net for more information about the and registration process.

Insurance

We strongly recommend that students who are not US citizens or permanent residents to purchase insurance coverage through a US carrier.

Student Services

The Harvest English Institute offers a wide range of carefully organized activities and services.

We care deeply for the security and well-being of students and make sure they are well equipped with information to have an excellent stay while in the USA.

We promote cultural and social events on an on-going basis to make sure students are offered a range of activities to immerse them into the American culture, community, and the English language.

Departure checklist

Carry these items with you in your carry-on luggage:

- Valid passport;
- Certificate of eligibility (I-20 Form);
- Proof of financial support;
- Sufficient funds to cover travel expenses (a creditcard and some cash in US dollars);
- Medical records and evidence of adequate insurance coverage;
- Valid foreign driver's license and International Driver's Permit (if you plan to drive);
- Transportation arrangements from the airport to the Harvest English Institute campuses;
- The street address of where you will be staying while in the United States;
- Medications you use regularly.

What to pack

June, July, and August are generally hot and humid months throughout the U.S. In September the season starts changing and cooling down.

In New Jersey the months of November to March are considered very cold. Be prepared for snow and ice. Bring coats, hats, non-slippery shoes, and gloves.

In Florida, winters are milder and not as cold. Be prepared for warmer days and cooler nights. Bring sweaters, long sleeve shirts and pants, but don't forget that Florida has mild to warm weather and it can change very fast. One day may be cool and the next a beautiful, sunny day to go to the park or the beach.

In California, nice sunny days are waiting for you. Bring comfortable clothes and be prepared to spend hours walking around and enjoying sun and fresh air. The months of June to September are warmer and dryer. From October to December the temperature is pleasant especially in the mornings, with warm afternoons. From April to June, it usually rains - be prepared! California is a very sunny place. So, don't forget your sunscreen.

If you have a traditional national costume and/or cultural artifacts from your country that you would like to wear or present at the Harvest International Festival you are more than welcome to bring them along!





“

It's not only about teachers, high-tech, and atmosphere. It's also about the U.S. has to offer. Harvest it happen!

Bruna Di Tullio
Actress and Student

the excellent
and the incredible
about everything
harvest just makes



"Classes are fun, exciting, and I'm never bored. I started English classes to learn a language and discovered that there is a whole world to be learned! I recommend the HEI no questions asked!"

Yuxuan Du - China



"Most schools can teach English grammar and vocabulary, but harvest is different! Here, you learn about culture, lifestyle, and that it is okay to just enjoy life as an American matter where you come from."

Thamer Alsahli - Saudi Arabia





*Don't forget
your camera!*



FIELD TRIPS

Field trips are promoted by the Institute to give students the opportunity to learn more about American culture. Weekly field trips are available to amazing destinations surrounding our area.



• harvest.net •

• **Newark Campus** (Main Campus)

128 Wilson Ave, Newark, NJ - 07105

harvest@harvest.net

Phone: +1-973-274-1888

• **Orlando Campus**

5950 Lakehurst Dr, Orlando, FL - 32819

orlando@harvest.net

Phone: +1-407-985-29998

• **Orlando Campus** (Auxiliary Campus)

8570 Palm Pkwy, Orlando, FL - 32836

orlando@harvest.net

Phone: (407) 777-4770

• **Long Branch Campus**

339 Broadway, Long Branch, NJ - 07740

lb@harvest.net

Phone: +1-732-728-0100

• **Los Angeles CA**

3550 Wilshire, Suite 1050, Los Angeles, CA - 90010

la@harvest.net

Phone: +1-213-421 3330

 harvestenglishinstitute

 harvestinstitute

 harvest english institute

 harvest_inst