



young learners

you learn, we care

# Price List

Young Learner courses 2019

Ages 7-18

England | Malta | South Africa | USA | Ireland | Canada



Bestil til den laveste pris i verden på: <https://www.languagecourse.net/da/skole-->

+44-330 124 03 17 - [support-da@languagecourse.net](mailto:support-da@languagecourse.net)

# INFORMATION

Applies to UK, US and South Africa schools only

## FEES

### Registration Fee

Included in the package price.

### Accommodation Placement Fee

Included in the package price.

### Change Fee

- May be charged, after the student has arrived at the school and wants to make a change to the accommodation or length of stay.
- Change fee is waived where the student is making a change which is more expensive e.g. lengthening a course or changing to a more expensive accommodation option.

### Document Courier

- Charged where the student or third party requires the original copy of a document such as a visa letter or form, or a certificate.

### Unaccompanied Minor (UM)

- This fee is payable for any student that has been booked as a UM on the airline. (please see further notes below)

### Delayed Flight

- Fee to be paid on arrival at the school by the student.
- Fee is payable when the student takes more than two hours to come through immigration and baggage.

### Homestay Special Diet

- Vegan
- Celiac (gluten-free)
- Lactose free
- Vegetarian (Malta only)

## PACKAGE FEES INCLUDE

- Full board (3 meals a day) and accommodation – some meals may be cold packed meals.
- Placement Test
- School Induction
- Local Tour
- 15 hours' English language tuition
- LAL Course Book
- Certificate of Attendance
- Report
- Full leisure and excursion programme (some homestay packages give one free day per week)
- Transfers (London Heathrow only for UK schools)
- 24 hour supervision by LAL staff
- Wifi in residences (most homestays have Wifi but we cannot guarantee this for every homestay).

## KEY INFORMATION

- All UK schools are accredited by the British Council.
- All US schools are accredited by CEA.
- If a student is over or under the age range published, an LAL waiver will be supplied and must be completed and returned. These will be available on our forms website.
- Students can stay for a minimum of 1 week and a maximum of 4 weeks.
- Courses longer than this are on request, but excursions may be repeated.
- Arrivals outside the transfer days are limited and on request only.
- Changes to the programme cannot be made to individual students.
- Changes to the programme for groups only allowed by written mutual consent with at least two weeks' notice
- Requests cannot be guaranteed during High Season
- All students are required to register on arrival. There may be a waiting period at peak arrival times.

## TUITION

- Qualified teachers (native or native-level)
  - 15 hours' English tuition as a minimum each calendar week.
  - Some schools will have lessons in the morning and afternoon on selected days to ensure 15 hours per week. (see timetables)
  - LAL London St Mary's and Torbay operate a weekly zig-zag timetable during the summer (July and August) when numbers are high.
  - Other schools may operate zig-zag timetables when numbers are high.
  - Students on 1 week courses will usually have lessons in the morning, although this is not guaranteed.
  - Students on 3 week courses will usually have 2 weeks of lessons in the morning, although this is not guaranteed.
  - All students receive an LAL course book which they keep
- N.B. It is against employment legislation in the UK to discriminate when recruiting staff. This means that some staff, including teachers, may not be native speakers.

## DAMAGE DEPOSITS

- A damage deposit is required for all UK and US Summer Schools for all students for all accommodation types.
- The amount is payable in cash on arrival and is handed back on departure only.
- Damage deposits be handed back when the student has vacated the room and handed back any key they may be given
- The amounts are:
  - UK: £60 or €80
  - US: \$100 or €80
  - Cape Town: ZAR 500 or €35(in small notes as we may not be able to give change)
- Where loss or damage has been agreed, LAL will supply an invoice/receipt for the transaction.

LAL Language Centres UK Ltd | + 44 (0)20 8843 7300 | info@lalschools.com

## ACCOMMODATION & MEALS

### General

- Students may not be able to occupy their rooms on arrival due to cleaning turnaround
- Meals are provided on arrival at the school/accommodation
- No meals are provided for the transport between the airport and the school
- Late arrivals (after 19.00) may only be offered cold meals such as a sandwich
- Where meals are provided on the day of departure, only one packed meal for the journey home will be supplied (e.g. packed breakfast for an early departure)
- Students are allocated with students from other countries or language where possible
- If a student has a particular sharing request, this must be supplied in writing at least two weeks prior to the arrival of the student
- Sharing requests cannot be guaranteed
- All accommodation changes, including room changes in residence, are to be undertaken and authorised by LAL. No student should change room without that authorisation.
- Some schools may not allow a second visit to the cafeteria so it is important this is checked on arrival to avoid embarrassment or issues with the venue school
- Access to residential accommodation during the day may be limited and subject to supervision by LAL

### UK & US Summer Schools

- Students will have to vacate their rooms by 09.00
- Students will not have access to their rooms until after 16.00.

## EXCURSIONS (UK Summer Schools)

- When numbers are round 80 or more, excursions are split (e.g. first week London for half the school and half to Oxford. Second week students alternate)
- Students on two week courses will attend both the publicised destinations during their stay
- Students on one week courses should let LAL know on arrival which destination they want to attend where there is a choice.

## DAY/FAMILY PROGRAMMES

### Day Programmes

What is included:

- Tuition Only
  - Placement Test & School Induction
  - 15 hours' English per week
  - LAL Course book and materials
  - Certificate of Attendance & Report
- Daytime
  - Same as Tuition Only, plus:
    - Lunch 5 days per week (except Torbay)
    - Afternoon activities and excursions on days where lessons take place
    - Supervision by LAL staff
    - Two free days per week to spend with family or friends
- Full Day
  - Same as Daytime, plus:
    - Dinner 6 days per week (except Torbay, and 5 days for US Summer Schools)
    - Evening leisure programme (5 days for US Summer Schools)
    - One free day per week to spend with family or friends
    - Two free days per week to spend with family or friends (US Summer Schools only)

### Family Programmes

- If a legal guardian is studying with the child, further information proving this status will have to be provided, translated and notarised.
- If only one parent is studying with the child, a translated, notarised letter of consent from the other parent is required.
- Families will be accommodated in shared bedroom accommodation unless otherwise requested. See single room supplements. If three family members, one single room supplement required.
- Parent/legal guardian receives 15 hours' General English in morning classes.
- All lessons are in the morning but may be slightly different times – please check timetables.
- Adult student also receives access to LAL Advantage, our student e-learning platform.
- There is no set leisure programme at LAL London but we can help with arrangements.

## EXCURSIONS & ACTIVITIES

- All excursions are accompanied by LAL activity staff
- LAL activity staff are not qualified guides
- Information will be given to students about the destination
- Transport will be private vehicle or public transport
- Optional excursions are offered at some of our schools – please see our website for more information
- Optional excursions can be booked and paid for in advance or on-site on arrival
- Optional excursions are based on minimum numbers so may not go ahead
- Students are given free time during some of our excursions (see Free Time and Leaving Campus for information on students 12 and under)
- Activities usually take place on-site and are led by LAL staff
- In Cape Town, most activities take place off-site and are led by LAL staff.

## UNACCOMPANIED MINOR

- Airlines require students to be booked as an unaccompanied minor where they are under a certain age. This changes from airline to airline so please check and make sure payment is made for the return trip.
- Parents may decide to take the service but can choose one way or return.
- LAL's fee is in addition to any fee that is paid to the airline.
- If multiple students (up to a maximum of six) travel together on the same flight, we will make only one charge.
- LAL provides the contact details of the actual person meeting the student one week in advance. If contact details are needed earlier, LAL cannot guarantee that the person nominated will be the person collecting the student so the information may change nearer the time as above.

## TWO CENTRE COURSES

- If you choose two centres with different transfer days, we will advise the best day to transfer.
- If you choose Tavistock as one centre, please contact us for more information as to how we can accommodate this into your package.
- Internal transfer supplement for two week course: GBP 75/ USD 100

## HOMESTAYS

### General

- Visitors to homestays are only allowed by arrangement with the host
- Students are not allowed to cook
- Students are not allowed to smoke
- Students must not use the landline/fixed telephone
- Curfews are in place.

### Torbay

- Students have breakfast and evening meals with the homestay
- Hosts prepare packed lunch for the students
- Sunday is a free day from lessons and excursions
- Students over 12 travel to and from school on foot or using public transport
- Students can buy bus tickets if they wish
- Students 12 and under are transported to and from the school in private vehicle
- As we transport the younger students to and from school, we place them further away from the school

### London St Mary's

- Students have all meals at the school except breakfast and dinner twice a week. See timetable for exact days for dinner.
- Students are expected to travel to and from school on foot or public transport
- Where the homestay is not within reasonable walking distance, a travelcard is provided.
- When an activity ends after 21.30, a shared taxi is provided by LAL to get the student home. (shared with other students)

### Berkhamsted

- Students have all meals at the school except breakfast and dinner twice a week. See timetable for exact days for dinner.
- Students are expected to travel to and from school on foot or by LAL's own transport where the homestay is not within reasonable walking distance.

### Fort Lauderdale

- Students are collected and dropped off at school every day

## TRANSFERS

### General

- If you do not take up our transfers with LAL, we still need to know flight details.
- LAL representative could be the driver.
- All third party companies providing transport services on behalf of LAL are checked for their suitability to work with under 18s.
- If a student is not using our transfer service, LAL still needs the flight details for both arrival and departure.
- LAL arranges students to be at airports at least two hours before departure. Requests to be at the airport significantly earlier may not be granted or require further supplement.

### Shared Transfers

- Student will be met in the Arrivals Hall by an LAL staff member or representative
- Public transport, LAL or LAL contracted vehicles or in private vehicles with other LAL students.
- Operate according to the operator's timetable or when LAL has accepted the allocated students onto their contracted vehicle.

### Private Transfers

- Student will be met in the Arrivals Hall by an LAL staff member or representative
- Private vehicles with the student or students who booked the transfer.
- Price only valid for student bringing one suitcase. If a second suitcase is brought, then a supplement may be applied for a larger vehicle.

## INSURANCE

- Go to [lalschools.com/insurance](https://lalschools.com/insurance) for details of cover
- All young learner students are insured for our Young Learner programmes except Tuition Only and Semi Intensive Tuition Only (Day & Family Programmes)
- Insurance is not included for the adult student(s) in Family Programme
- Where a group is sent with a group leader, they are also covered by the same insurance
- It is the responsibility of the parent or agent to make the claim(s), though LAL will assist in helping make a claim
- Insurance cards are sent out between 1 and 2 weeks prior to arrival.

## POCKET MONEY

- Although not obligatory, students will be asked to deposit their pocket money for safe-keeping in the school safe.
- If a parent needs to send pocket money to a student, please use our partner, Flywire, using this portal:
  - [flywire.com/pay/lal-uk-nonclass](https://flywire.com/pay/lal-uk-nonclass)
  - [flywire.com/pay/lal-sa-direct-zar](https://flywire.com/pay/lal-sa-direct-zar)
  - [flywire.com/pay/lal-sa-nonclass](https://flywire.com/pay/lal-sa-nonclass)
  - [flywire.com/pay/lal-fort-lauderdale-nonclass](https://flywire.com/pay/lal-fort-lauderdale-nonclass)
- It can take 24 hours/one working day to process a payment
- LAL cannot give cash to a student until payment has been received in our bank account. Proof of payment is not sufficient.
- Maximum of £200/\$200/€200
- Flywire will require you to make payment either from a debit or credit card or from your bank account. You can choose according to the most convenient way for you.

## FREE TIME & LEAVING THE CAMPUS

### All Programmes

- Students are given free-time in groups of at least 3 when on excursions (students 12 or under are fully supervised by LAL staff)
- Parents who want to visit and/or remove their children for a day or overnight must give LAL at least 24 hours' notice and bring valid photo ID.
- Where a nominated person is to visit or remove a student from the campus, written notice must be sent to LAL along with a copy of the parent or legal guardian's valid photo ID.

### UK & US Summer Schools

- Free time can only be taken when there is no scheduled excursion. Students are only allowed to leave the campus under the following conditions:
  - during the afternoon (locally - not Central London)
  - aged 16 or over (or if 16 at the end of the calendar year)
  - consent is given by parents via our Welfare and Consent form only (no e-mails or PDFs accepted)
  - students in groups of 3 or more

### Torbay

- Students must remain on-site during break and lunch times.

### Cape Town

- Students are not allowed to leave the campus during their free time if they are not in a minimum group of 3 students, or with their Group Leader or an LAL staff member.
- Students are not allowed out of the residence after 22.00.

# TORBAY

## FEES

- **Registration:** Included
- **Accommodation placement:** Included
- **Change:** 35
- **Document Courier:** 70
- **Travel & Medical Insurance:** Included
- **Unaccompanied Minor:** 30 each way
- **Delayed flight:** 30
- **Homestay Special Diet:** 20 per week

## KEY INFORMATION

**Minimum age:** Please see age range for specific school. LAL reserves the right to occasionally accept students outside these ages.

**Minimum stay:** 1 week

**Class sizes:** 15

**Courses start:** See each school for details

### School closing dates:

19 Apr, 06 May, 27 May 2019. The school is normally closed but is open for Young Learner courses only.

**Transfers:** Accompanied Shared Transfers operate in the times shown and students may have to wait for other students scheduled to land within two hours. Special transfers operate outside these times and will be carried out by private taxi.

**Groups of 6 or more:** If you wish to send a group of 6 or more students travelling together, please contact us for a group quotation.

**Prices:** All prices are per person unless stated otherwise.

**Vacation English:** 10-11 year olds will receive transport to and from homestays instead of walking or getting public transport.

£ GBP

including taxes at the current rates.

## THE PROGRAMMES

Full Packages including accommodation, meals and transfers.

<b>Vacation English</b>	20 English lessons (15 hours per week)	Daily daytime activities except Sundays.
<b>Vacation English Plus</b>	20 English lessons (15 hours per week)	Daily daytime activities/excursions except Sundays, 1 full day excursion on Saturday and activities on 3 evenings.
<b>Abitur 30</b>	30 English lessons (22.5 hours per week)	3 daytime activities/excursions except Sundays.

## TWO-CENTRE & NON-RESIDENTIAL COURSES

Please see separate page for details.

## LAL TORBAY

### COURSES

Course	Price per person per week		Ages	Course dates
	Homestay, shared bedroom, shared bathroom	Hotel, shared bedroom (2-4 beds), en-suite bathroom		
Vacation English	715	-	10-11	07 Apr - 05 May 16 Jun - 01 Sep 29 Sep - 27 Oct
	-	660	14-17	07 Apr - 05 May 16 Jun - 01 Sep 29 Sep - 27 Oct
Vacation English Plus	595	-	12-17	07 Apr - 05 May 16 Jun - 01 Sep 29 Sep - 27 Oct
	-	695	14-17	23 Jun - 18 Aug
Abitur 30	635	-	13-17	23 Jun - 18 Aug
	670	715	16+	07 Apr - 05 May 16 Jun - 01 Sep 29 Sep - 27 Oct

### ACCOMPANIED SHARED TRANSFERS

	Scheduled landing	Sunday only		One-way Special Transfer
		Scheduled take-off	Return standard transfer	
London Heathrow (LHR) Terminals 1,2 & 3	09.00 - 17.30	12.00 - 18.00	Included	275
London Heathrow (LHR) Terminal 4	09.00 - 17.30	12.00 - 18.00	Included	275
London Heathrow (LHR) Terminal 5	09.00 - 17.30	12.00 - 18.00	Included	275
London Gatwick (LGW), Luton (LTN), Stansted (STN)	10.00 - 14.00	14.00 - 18.00	140	310
St Pancras Eurostar Terminus, London City (LCY)	10.00 - 14.00	14.00 - 18.00	140	310
Bristol (BRS)	07.00 - 21.00	08.00 - 21.00	-	100
Exeter (EXT)	07.00 - 21.00	08.00 - 21.00	-	70

# UK SUMMER SCHOOLS

## FEES

- **Registration:** Included
- **Accommodation placement:** Included
- **Change:** 35
- **Document Courier:** 70
- **Travel & Medical Insurance:** Included
- **Unaccompanied Minor:** 30 each way
- **Delayed flights:** 30
- **Homestay Special Diet Supplement** 20 per week

## KEY INFORMATION

**Minimum age:** Please see age range for specific school. LAL reserves the right to occasionally accept students outside these ages.

**Minimum stay:** 1 week unless stated; please check course dates for the specialised courses

**Class sizes:** 15

**Courses start:** See each school for details

**School closing dates:** None for Young Learner courses.

**Transfers:** Accompanied Shared Transfers operate in the times shown and students may have to wait for other students scheduled to land within two hours. Special transfers operate outside these times and will be carried out by private taxi.

**Groups of 6 or more:** If you wish to send a group of 6 or more students travelling together, please contact us for a group quotation.

**Prices:** All prices are per person unless stated otherwise.



£ GBP

including taxes at the current rates.

## OUR PROGRAMMES

Full Packages including accommodation, meals and shuttle transfers to and from London Heathrow.

<b>Classic Summer School &amp; Abitur 20</b>		1 full day and 1 half day excursion per week.
<b>Digital Summer School</b>	20 English lessons (15 hours per week)	3 full day and 2 half day excursion per 2 week course. Added specialist sessions.
<b>Young Professionals Summer School</b>		1 full day and 1 half day excursion per week. Added specialist sessions.
<b>Sports &amp; Arts Summer School</b>		3 full day and 2 half day excursions per 2 week course. Added specialist sessions.
<b>London Experience Summer School</b>	Daily daytime and evening activities	1 full day and 4 half day excursions per week. Enhanced excursions and 1 extra full day excursion at the weekend for Premium.
<b>Action Summer School</b>		1 full day and 1 half day excursion per week. Added specialist sessions.
<b>Summer School Homestay</b>		1 full day and 1 half day excursion per week. 2 evenings at the homestay.

## TWO-CENTRE & NON-RESIDENTIAL COURSES

Please see separate page for details.

## LAL BERKHAMSTED Digital Summer School, Berkhamsted School

### COURSES

Per person per week	Residence, 2-4 beds per room, shared bathroom	Residence, 6 beds per room, shared bathroom	Homestay, shared bedroom, shared bathroom	Ages	Min. level	Course dates
<b>Film-making Summer School</b>	915	830	865	11-17	A2	07 Jul - 21 Jul, 21 Jul - 04 Aug (2 weeks only)
<b>Coding Summer School</b>	945	860	895	11-17	A2	07 Jul - 21 Jul, 21 Jul - 04 Aug (2 weeks only)
<b>Classic Summer School</b>	825	740	775	9-17	All	07 Jul - 11 Aug

### UPGRADES

Upgrade	Price
<b>Intensive English</b> 3 hours per week, min. level A2	50
<b>Private Tuition</b> per hour	60
<b>Harry Potter Studio Tour</b> must be booked by 01 May 2019	65 (net only)

### ACCOMPANIED SHARED TRANSFERS

	Return transfer	Sunday only		Each way Special Transfer
		Scheduled landing	Scheduled take-off	
London Heathrow (LHR) All terminals	Included	08.00 - 20.00	08.00 - 20.00	65
Luton (LTN)	90	08.00 - 20.00	08.00 - 20.00	50
London Gatwick (LGW)	150	10.00 - 18.00	14.00 - 18.00	95
Stansted (STN)	150	10.00 - 18.00	14.00 - 18.00	95
St Pancras Eurostar Terminus, London City (LCY)	150	10.00 - 18.00	14.00 - 18.00	95

## LAL BRIGHTON Young Professionals Summer School, University of Sussex

### COURSES

Per person per week	Residence, single room, en-suite bathroom	Ages	Min. level	Course dates
<b>Leadership Summer School</b>	1020	14-17	B1	30 Jun - 14 Jul, 14 Jul - 28 Jul, 28 Jul - 11 Aug (2 weeks only)
<b>Pre University Taster Summer School</b>	1020	15-17	B1	30 Jun - 11 Aug
<b>Abitur 20 Summer School</b>	930	16-17	B1	30 Jun - 11 Aug
<b>Classic Summer School</b>	920	12-17	All	30 Jun - 11 Aug

### UPGRADES

Upgrade	Price
<b>Intensive English</b> 3 hours per week, min. level A2	50
<b>Private Tuition</b> per hour	60

### ACCOMPANIED SHARED TRANSFERS

	Return transfer	Sunday only		Each way Special Transfer
		Scheduled landing	Scheduled take-off	
London Heathrow (LHR) All terminals	Included	10.00 - 18.00	10.00 - 19.00	95
London Gatwick (LGW)	60	09.00 - 19.00	09.00 - 19.00	65
Luton (LTN), Stansted (STN)	200	11.00 - 16.00	12.00 - 19.00	130
St Pancras Eurostar Terminus, London City (LCY)	200	11.00 - 16.00	12.00 - 19.00	130

LAL Language Centres UK Ltd | + 44 (0)20 8843 7300 | info@lalschools.com

Bestil til den laveste pris i verden på: <https://www.languagecourse.net/da/skole-->  
+44-330 124 03 17 - [support-da@languagecourse.net](mailto:support-da@languagecourse.net)

## LAL LONDON London Experience Summer School, St Mary's University

### COURSES

Per person per week	Residence, single room, shared bathroom	Residence, single room, en-suite bathroom	Homestay, shared bedroom, shared bathroom	Ages	Course dates
Premium London Experience	990	1060	-	12-13	30 Jun - 18 Aug
			860	14-17	30 Jun - 18 Aug
Classic London Experience	925	995	-	12-13	30 Jun - 18 Aug
			795	14-17	30 Jun - 18 Aug

### UPGRADES

Upgrade	Price
Private Tuition per hour, min. level A2	60
Harry Potter Studio Tour must be booked by 01 May 2019 (net only)	65

## LAL TAVISTOCK Action Summer School, Mount Kelly

### COURSES

Per person per week	Residence, 2-6 beds per room, shared bathroom	Ages	Course dates
Adventure Summer School	795	7-16	10 Jul - 24 Jul, 24 Jul - 07 Aug (2 weeks only)
Swimming Summer School	740	7-16	10 Jul - 07 Aug
Classic Summer School	695	7-16	10 Jul - 07 Aug

### UPGRADES

\* For groups of 6 or more

Upgrade	Price
Intensive English 3 hours per week, min. level A2	50
Private Tuition 1 hour	60
Horse Riding 1 hour	65 net
London Finale 1 night*	160 net
London Finale/Harry Potter Plus 2 nights*	260 net

## LAL WINCHESTER Sports & Arts Summer School, St Swithun's School

### COURSES

Per person per week	Residence, single room, shared bathroom	Residence, 8 beds per room, shared bathroom	Ages	Course dates
Sports Summer School	870	855	9-17	15 Jul - 12 Aug
Arts Summer School	870	855	9-17	15 Jul - 29 Jul, 29 Jul - 12 Aug (2 weeks only)
Classic Summer School	795	780	9-17	15 Jul - 12 Aug

### UPGRADES

Upgrade	Price
Intensive English 3 hours per week, min. level A2	50
Private Tuition per hour	60
Harry Potter Studio Tour must be booked by 01 May 2019 (net only)	65

### ACCOMPANIED SHARED TRANSFERS

	Return transfer	Sunday only		Each way Special Transfer
		Scheduled landing	Scheduled take-off	
London Heathrow (LHR) All terminals	Included	08.00 - 20.00	08.00 - 20.00	35
London Gatwick (LGW)	90	10.00 - 18.00	12.00 - 18.00	65
Luton (LTN)	110	11.00 - 18.00	12.00 - 18.00	75
Stansted (STN)	195	11.00 - 18.00	12.00 - 18.00	115
St Pancras Eurostar Terminus, London City (LCY)	160	11.00 - 18.00	12.00 - 18.00	100

### ACCOMPANIED SHARED TRANSFERS

**London Heathrow:** three shuttles on arrivals: 12.00, 15.00 and 18.30/three shuttles on departures: 02.30, 06.00 and 09.00. Time from airport to school: 5.5 hours. All other London airports and St Pancras will go through LHR.  
**Arrivals:** Students will be assigned to the first available shuttle. Be aware that depending on when the student comes into the Arrivals Hall, there may be a long wait for the next shuttle. We would allow approximately one hour for students to reach the Arrivals Hall after landing. They will be supervised by LAL staff.  
**Departures:** Students will leave on the shuttle which will get them to the airport at least 2 hours prior to departure time. Students may have to wait at the airport for more than 2 hours but they will be supervised by LAL staff until check-in and security.

	Return transfer	Wednesday only		Each way Special Transfer
		Scheduled landing	Scheduled take-off	
London Heathrow (LHR) All terminals	Included	09.00 - 17.00	10.00 - 20.00	300
London Gatwick (LGW), Luton (LTN)	150	09.00 - 15.30	11.30 - 19.00	330
Stansted (STN)	200	09.00 - 15.30	11.30 - 19.00	330
St Pancras Eurostar Terminus, London City (LCY)	150	09.00 - 16.00	11.30 - 19.00	325
Bristol (BRS)	See Special Transfers	09.00 - 20.00	09.00 - 20.00	100
Exeter (EXT)	Transfers	09.00 - 20.00	09.00 - 20.00	25

### ACCOMPANIED SHARED TRANSFERS

	Return transfer	Monday only		Each way Special Transfer
		Scheduled landing	Scheduled take-off	
London Heathrow (LHR) All terminals	Included	10.00 - 18.00	11.00 - 19.00	80
London Gatwick (LGW)	150	10.00 - 17.00	14.00 - 18.00	95
Luton (LTN), Stansted (STN)	195	10.00 - 16.00	14.00 - 18.00	125
St Pancras Eurostar Terminus, London City (LCY)	195	10.00 - 16.00	14.00 - 18.00	150

Issue 1.0 | LAL Language Centres Price List 2019 | 7

# MALTA

## FEES

- **Registration:** Included
- **Accommodation placement:** Included
- **Change:** 60
- **Document Courier:** 70
- **Travel & Medical Insurance:** 10 per week
- **Unaccompanied Minor:** 35

## KEY INFORMATION

**Minimum age:** Please see age range for specific school. Age ranges are a guide and IELTS reserves the right to accept students outside these ages occasionally.

**Minimum stay:** 1 week

**Class size:** 15

**School closing dates:** 19 Apr, 15 Aug. No refunds will be made for lessons missed on these days.

**Visa information:** Please see our website for more details.

**All prices are per person per week unless stated otherwise.** If you wish to send a group of 10 or more students travelling together, please contact us for a group quotation.

€ EUR

including taxes at the current rates.

## THE PROGRAMMES

Full packages including accommodation, meals and transfers:

<b>Vacation English Plus</b>	20 English lessons (15 hours per week)	Daily daytime and evening activities
<b>Summer Camp</b>		Excursions, breakfast, packed lunch and evening meal.



An **LAL** language centre.

## IELS MALTA

### COURSES

Per person per week	Club Residence Shared bedroom, shared bathroom		Centre Residence Shared bedroom, shared bathroom		Homestay Shared bedroom, shared bathroom		Homestay supplements		Ages	Course dates
	First week	Extra week	First week	Extra week	First week	Extra week	Special diets	Wireless internet		
Vacation English Plus (Summer)	794	728	858	792	635	570	50	20	13-17	08 Jun - 08 Sep
Vacation English Plus (Easter, Spring, Autumn)	-	-	-	-	521	475	50	20	13-17	06 Apr - 28 Apr 28 Sep - 03 Nov
Abitur 30 (Summer)	-	-	974	907	751	684	50	20	16-17	08 Jun - 08 Sep
Abitur 30 (Easter, Spring, Autumn)	-	-	-	-	630	574	50	20	16-17	06 Apr - 28 Apr 28 Sep - 03 Nov
Summer Camp English			<b>Daytime</b>		<b>Tuition only</b>				8 - 12	07 Jul - 25 Aug
	First week	Extra week	First week	Extra week	First week	Extra week				
	831	777	404	337	222	152				

### UPGRADES

PADI Manual fees are not included. Manual must be purchased directly from the Diving Centre in Malta. Estimated fee per manual **EUR 80**.

Upgrade	Length	Price per course
Diving - PADI Open Water	4-5 days	455
Diving - PADI Advanced	3 days	360

### TRANSFERS

	Arrival transfer with meet & greet	Return transfer with meet & greet
Malta International Airport (MLA)	Included	Included

LAL Language Centres UK Ltd | +44 (0)20 8843 7300 | info@lalschools.com

Bestil til den laveste pris i verden på: <https://www.languagecourse.net/da/skole-->  
+44-330 124 03 17 - [support-da@languagecourse.net](mailto:support-da@languagecourse.net)



# SOUTH AFRICA

## FEES

- **Registration:** Included
- **Accommodation placement:** Included
- **Change:** 35
- **Document Courier:** 85
- **Travel & Medical Insurance:** Included (except Family Programmes) with limitations
- **Unaccompanied Minor:** 30 each way for students travelling as unaccompanied minors
- **Delayed flights:** A surcharge of EUR 20 applies for every hour or part hour staff wait in order to meet clients delayed by more than 2 hours from their scheduled arrival time.

## KEY INFORMATION

**Minimum age:** 13 (exceptions can be made for younger students on request)

**Minimum stay:** 1 week

**Class size:** 15

**School closing dates:** None for Young Learner courses.

**All prices are per person per week unless stated otherwise.** If you wish to send a group of 6 or more students travelling together, please contact us for a group quotation.

€ EUR

including taxes at the current rates.

## THE PROGRAMMES

Full packages including accommodation, meals and transfers:

<b>Vacation English Plus</b>	20 English lessons (15 hours per week)	Daily daytime activities/excursions and evening activities every day except Sundays.
<b>Travelling Classroom™ Experience</b>	5 English lessons (5 hours per week)	Combined lessons, safari and adventure activities. Accommodation, breakfast, evening meals and transfers.

## LAL CAPE TOWN

### COURSES

16-17 year old students studying Vacation English Plus may be placed in General English classes.

Per person per week	Residence, shared room, shared bathroom	Special diet	Ages	Course dates
Vacation English Plus	795	22	13-17	06 Jan - 24 Feb 30 Jun - 25 Aug
Travelling Classroom™ Experience	890	22	16-17	07 Jan - 11 Jan 11 Mar - 15 Mar 08 Jul - 12 Jul 09 Sep - 13 Sep 11 Nov - 15 Nov 06 Jan - 10 Jan 2020

### TRANSFERS

	Standard transfers on Sunday		
	Scheduled landing	Scheduled take-off	Return transfer
Cape Town International (CPT)	Any time	Any time	Included

# USA

## FEES

- **Registration:** Included
- **Accommodation placement:** Included
- **Change:** 50
- **Document Courier:** 100
- **Travel & Medical Insurance:** Included
- **Unaccompanied Minor:** 50
- **Delayed flights:** 60
- **Special Diet Supplement:** 28 per week

## KEY INFORMATION

**Minimum age:** 12. Age ranges are a guide and LAL reserves the right to occasionally accept students outside these ages.

**Minimum stay:** 1 week

**Class size:** 15

**School closing dates:** None for Young Learner courses.

**Visa information:** See website for more details

**All prices are per person per week unless stated otherwise.** If you wish to send a group of 6 or more students travelling together, please contact us for a group quotation

For non-residential courses for young learners, please see our Day and Family Programmes

**\$ USD**

including taxes at the current rates.

## THE PROGRAMMES

Full packages including accommodation, meals, insurance and transfers:

<b>Vacation English</b>		5 half day and 1 full day excursion
<b>Sport &amp; Music Summer School</b>		Vacation English with 3 afternoon excursions and 2 afternoon specialist sessions per week.
<b>Pre-University Taster Summer School</b>	20 English lessons (15 hours per week)	1 full day and 1 half day excursion per week. Added specialist sessions.
<b>Classic/Premium New York Experience</b>		Daily daytime and evening activities. 1 full day and 4 half day excursions per week. Premium: 3 added evening excursions per 2 weeks
<b>Classic Summer School</b>		Daily daytime and evening activities. 1 full day and 3 half day excursions per week.
<b>Semi Intensive Summer School</b>	24 English lessons (18 hours per week)	4 half day and 1 full day excursion per week (Fort Lauderdale & New York), 3 half day and 1 full day excursion per week (Boca Raton)

## LAL FORT LAUDERDALE Sports & Music School

### COURSES

	Per person per week	Homestay, shared bedroom, shared bathroom	Ages	Course dates
Music Summer School		1465	12-18	23 Jun - 31 Aug
Sports Summer School		1465	12-18	
Vacation English		1165	12-18	06 Jan - 16 Feb
Vacation English Semi Intensive		1215	12-18	23 Jun - 31 Aug

### ACCOMPANIED SHARED TRANSFERS

Airport	Sunday Arrival & Saturday Departure only		
	Return transfer	Scheduled landing	Scheduled take-off
Miami (MIA)	Included	07.00 - 21.00	11.00 - 01.00
Fort Lauderdale (FLL)	Included	07.00 - 21.00	11.00 - 01.00

### UPGRADES

Upgrade	Price
Orlando Overnight stay (net only)	350

## LAL BOCA RATON USA Young Professionals Summer School, Lynn University

### COURSES

	Per person per week	Residence, 2 beds per room in apartments of 5 rooms with 2 shared bathrooms	Ages	Course dates
Pre-University Taster Summer School Min. level B1		1395	12-18	26 Jun - 07 Aug
Classic Summer School		1295	12-18	26 Jun - 07 Aug
Semi-Intensive Summer School		1345	12-18	26 Jun - 07 Aug

### ACCOMPANIED SHARED TRANSFERS

Airport	Wednesday only		
	Return transfer	Scheduled landing	Scheduled take-off
Miami (MIA)	Included	07.00 - 21.00	11.00 - 01.00
Fort Lauderdale (FLL)	Included	07.00 - 21.00	11.00 - 01.00

### UPGRADES

Upgrade	Price
Major League Baseball Game (net only)	85
Orlando Overnight stay (net only)	350

## LAL NEW YORK New York Experience Summer School, Fordham University

### COURSES

	Per person per week	Residence, 1-2 beds per room in apartments of 2-3 rooms, shared bathroom	Ages	Course dates
Premium New York Experience		1710	12-18	03 Jul - 31 Jul (2 weeks only)
Classic New York Experience		1575	12-18	03 Jul - 31 Jul
Semi-Intensive Summer School		1625	12-18	03 Jul - 31 Jul

### ACCOMPANIED SHARED TRANSFERS

Airport	Wednesday only		
	Return transfer	Scheduled landing	Scheduled take-off
John F Kennedy (JFK)	Included	07.00 - 21.00	11.00 - 01.00
Newark Liberty International (EWR)	Included	07.00 - 21.00	11.00 - 01.00
La Guardia (LGA)	Included	07.00 - 21.00	11.00 - 01.00

### UPGRADES

Upgrade	Price
Major League Baseball Game (net only)	85
Washington, Boston or Niagara Falls Overnight stay (net only)	350

LAL Language Centres UK Ltd | + 44 (0)20 8843 7300 | info@lalschools.com

# IRELAND

## FEES

- **Registration:** Included
- **Accommodation placement:** Included
- **Change:** 100
- **Document Courier:** 100
- **Travel & Medical Insurance:** Included
- **Unaccompanied Minor:** No charge
- **Delayed flights:** No charge.

## KEY INFORMATION

**Minimum age:** 16 unless otherwise stated; students under 18 are legally minors and subject to a curfew and additional terms and conditions. Students aged 16-19 may also take our Young Adult Package.

**Minimum stay:** 1 week

**Class size:** 15

**Courses start:** See each school for details

**School closing dates:** None for Young Learner courses.

**All prices are per person per week unless stated otherwise.** If you wish to send a group of 12 or more students travelling together, please contact us for a group quotation.

€ EUR

including taxes at the current rates.

## THE PROGRAMMES

Full packages including accommodation and meals:

<b>Apollo Young Learners</b>	15 English lessons (15 hours per week)	Daily daytime and evening activities/excursions, full board. Transfers not included.
------------------------------	--	--

## TWO-CENTRE & NON-RESIDENTIAL COURSES

Please see separate page for details.



## DUBLIN Maynooth University

### COURSES

Per person per week	Residence, 1 bed per room, en-suite bathroom	Ages	Course dates
Apollo Young Learners	900	11-17	24 Jun - 09 Aug

### TRANSFERS

Standard transfers (Sunday arrivals and departures)			
Airport	Scheduled landing	Scheduled take-off	Return transfer
Dublin Airport (DUB)	Any time	Any time	140

### UPGRADES

Upgrade	1 week
Apollo Focus: 5 hours extra tuition	Free

## DUBLIN Sutton Park School

### COURSES

Per person per week	Homestay, shared bedroom, shared bathroom	Ages	Course dates
Apollo Young Learners	750	11-17	24 Jun - 09 Aug

### TRANSFERS

Standard transfers (Sunday arrivals and departures)			
Airport	Scheduled landing	Scheduled take-off	Return transfer
Dublin Airport (DUB)	Any time	Any time	140

### UPGRADES

Upgrade	1 week
Apollo Focus: 5 hours extra tuition	Free

## CORK University College Cork

### COURSES

Per person per week	Residence, 1 bed per room, en-suite bathroom	Homestay, shared bedroom, shared bathroom	Ages	Course dates
Apollo Young Learners	800	700	11-17	24 Jun - 09 Aug

### TRANSFERS

Standard transfers (Sunday arrivals and departures)			
Airport	Scheduled landing	Scheduled take-off	Return transfer
Dublin Airport (DUB)	Any time	Any time	160
Cork Airport (ORK)	Any time	Any time	100

### UPGRADES

Upgrade	1 week
Apollo Focus: 5 hours extra tuition	Free

# CANADA MONTRÉAL

## FEES

- **Registration:** Included
- **Materials:** Included
- **Medical insurance:** Included
- **Custodianship Letter:** Included
- **Certificate:** Included
- **Camp ALI T-shirt:** Included
- **Fees apply for any extra day before and after the official dates:** 180 per day

## KEY INFORMATION

### Minimum age:

Summer: 10  
Winter: 12

**Minimum stay:** 2 weeks

**Class size:** 16

**Courses start:** See each school for details

### School closing dates:

01 Jan, 18 Feb, 19 Apr, 22 Apr, 20 May,  
01 Jul, 05 Aug, 02 Sep, 14 Oct, 11 Nov,  
25 Dec, 26 Dec.

**All prices are per person per week unless stated otherwise.**



**\$ CAD**

including taxes at the current rates.

## OUR PROGRAMS

\*Dependent on start date.

Program	Duration	Classes/Activities	Meals	Trips
Language Immersion (English or French)	2 weeks	20 hours per week of English or French classes	3 meals per day	1-2 trips*
	3 weeks	10 hours per week of Interactive Language Experience and field trips		2-3 trips*
	4 weeks			3 trips*
Language & Sports (English or French)	2 weeks	15 hours per week of English or French classes	3 activities per week	1-2 trips*
	3 weeks	15 hours per week of sports		2-3 trips*
	4 weeks			3 trips*
Winter School	2-6 weeks	20 hours of English or French classes per week 10 hours per week of Communicative Activities		Weekend trips

## WINTER PROGRAM

### COURSES

\*February upon request

Course	Residence - 2-3 beds per room, shared bathroom			Ages	Course dates	Start dates*
	2 weeks	3 weeks	4 weeks			
Winter School	3300	4100	4900	12-17	16 Dec - 24 Jan	16 Dec 23 Dec 30 Dec 06 Jan 13 Jan 20 Jan

### AIRPORT TRANSFERS

	Return
Montreal-Pierre Elliott Trudeau International Airport (YUL)	Included

## SUMMER PROGRAM

### COURSES

Residence check-in and check-out: Saturday, 10:00.

Course	University dormitory - Single bedroom, shared bathroom			Ages	Course dates	Start dates
	2 weeks	3 weeks	4 weeks			
Language Immersion (English or French)	4300	4995	6100	10-16	06 Jul - 03 Aug	06 Jul 13 Jul
Language & Sports (English or French)	4995	5900	6900	10-16		20 Jul

### AIRPORT TRANSFERS

	Return
Montreal-Pierre Elliott Trudeau International Airport (YUL)	Included

### UPGRADES

Upgrade	Price
New York	200

LAL Language Centres UK Ltd | + 44 (0)20 8843 7300 | info@lalschools.com

Bestil til den laveste pris i verden på: <https://www.languagecourse.net/da/skole-->  
+44-330 124 03 17 - [support-da@languagecourse.net](mailto:support-da@languagecourse.net)



# CANADA VANCOUVER

## FEES

- **Application:** 125
- **Materials:** 100  
Winter: 75  
Summer: 100
- **Homestay placement:**  
Winter: 240  
Summer: 260
- **Courier Service** if required: 75
- **Medical Insurance:** 2 per day
- **Unaccompanied Minor** if required: 150
- **Guardianship Letter** if required: 75

## KEY INFORMATION

### Ages:

Young Learners Program: 9-12  
Students aged 9-12 must be accompanied by an older sibling (16+), parent or guardian. They must be accompanied to and from the daily meeting spot (for school and activities) by the 16+ sibling parent or guardian.

Teen Program: 13-17

**Minimum stay:** 2 weeks

**Class size:**

**Courses start:** Mondays

**School closing dates:**

01 Jan, 18 Feb, 01 Jul, 05 Aug.

**All prices are per person per week unless stated otherwise.**



**\$ CAD**

including taxes at the current rates.

## OUR PROGRAMMES

<b>Young Learners Program</b>	25 hours of English lessons per week	2 included excursions per week
<b>Teen Program</b>	25 hours of English lessons per week	2 included excursions per week

## WINTER PROGRAM

### COURSES

Course	Tuition	Homestay	Total	Ages	Course dates	Start dates
Young Learners Program	605	275	880	9-12	07 Jan - 08 Feb	07 Jan 14 Jan
Teen Program	585	240	825	13-17		21 Jan 28 Jan

### UPGRADES

Upgrade	Price	Upgrade	Price
Fly Over Canada	25	Mexican Dinner	25
Laser Tag	20	Capilano Suspension Bridge	30
Victoria Day Trip	130	Whistler Day Trip Ski & Snowboard	180
Seattle Shopping Day Trip	70	Canucks Ice Hockey Game Dependent on availability	75

### AIRPORT TRANSFERS

	Return transfer
Vancouver International Airport (YVR)	220

## SUMMER PROGRAM

### COURSES

Course	Tuition	Homestay	Total	Ages	Course dates	Start dates
Young Learners Program	640	295	935	9-12	02 Jul - 23 Aug	02 Jul 08 Jul 15 Jul
Teen Program	610	260	870	13-17		22 Jul 29 Jul 06 Aug 12 Aug

### UPGRADES

\*Students must book Overnight Trip to Victoria in order to attend Whale Watching.

Upgrade	Price	Upgrade	Price
Whistler Day Trip	160	Overnight Trip to Victoria	260
Playland Amusement Park	30	Whale Watching*	80
Biking around Stanley Park	20	Rocky Mountains	440

### AIRPORT TRANSFERS

	Return transfer
Vancouver International Airport (YVR)	230

# DAY PROGRAMMES

## FEES

- **Registration:** Included
- **Accommodation placement:** Included
- **Change:** 35
- **Document Courier:** 70
- **Travel & Medical Insurance:** Included (except for Tuition Only and Semi Intensive Tuition Only)
- **Special Diet Supplement:** 20

## KEY INFORMATION

**Minimum age:** See schools pages

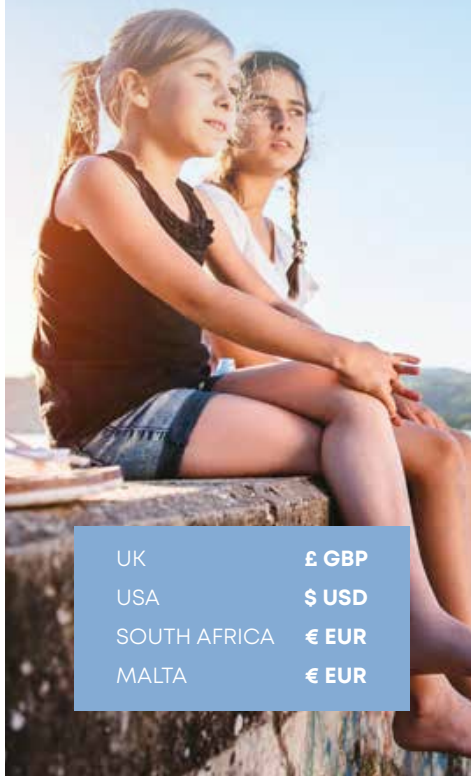
**Minimum stay:** 1 week

**Class size:** 15

**Courses start:** See schools pages

**School closing dates:** See schools pages

**All prices are per person per week unless stated otherwise.**



UK	£ GBP
USA	\$ USD
SOUTH AFRICA	€ EUR
MALTA	€ EUR

## OUR PROGRAMMES

- **Day Programmes do not include accommodation or transfers. Insurance not included for Tuition Only and Semi Intensive courses. Some meals are provided: see information notes page.**
- **Daytime is for morning and afternoon, 5 days per week (see timetable for which days)**
- **Full Day is morning, afternoon and evening, up to 6 days per week (see timetable for which days)**

Where the student is under 13, all Day Programmes will require a parent or guardian (18 years of age or over) to accompany the student to and from the school. Parent or guardian will need to accompany the student on the first day for all students.

## UK

	Tuition Only	Classic Summer School & Vacation English	Vacation English Plus	Young Professionals Summer School	Sports & Arts Summer School	London Experience	Action Summer School		Digital Summer School	
							Adventure	Swimming	Coding	Film-making
	Daytime	Full Day								
Berkhamsted	215	350	375	-	-	-	-	-	465	505
Brighton		350	375	-	475	-	-	-	-	-
London		370	420	-	-	485	-	-	-	-
Tavistock		350	375	-	-	-	420	475	-	-
Torbay		380	-	420	-	-	-	-	-	-
Winchester		350	375	-	-	450	-	-	-	-

## US

	Tuition Only	Semi Intensive Tuition Only	Classic Summer School & Vacation English		Sports/Music Summer School	New York Experience
			Daytime	Full Day	Daytime	Full Day
Boca Raton				640	-	-
Fort Lauderdale	350	400	555	-	805	-
New York				680	-	810

## SOUTH AFRICA

	Tuition Only	Daytime
Cape Town	275	535

## MALTA

	Vacation English				Abitur 30	
	First week	Extra Week	First week	Extra Week	First week	Extra Week
	Tuition Only		Daytime		Daytime	
Malta (Summer)	222	152	368	300	457	390
Malta (Easter, Spring & Autumn)	181	111	328	278	410	353
Malta Sumer Camp	222	152	404	337	-	-

LAL Language Centres UK Ltd | + 44 (0)20 8843 7300 | info@lalschools.com

Bestil til den laveste pris i verden på: <https://www.languagecourse.net/da/skole-->  
+44-330 124 03 17 - [support-da@languagecourse.net](mailto:support-da@languagecourse.net)

# FAMILY PROGRAMME

## FEES UK

- **Registration:** Included
- **Accommodation placement:** Included
- **Course materials & course book:** 28 (adult student only)
- **Change:** 35
- **Document Courier:** 70
- **Travel & Medical Insurance:** Included except for Tuition Only. Adult students are not included. 5 per week
- **Special Diet Supplement:** 20

## USA

- **Registration:** Included
- **Accommodation placement:** Included
- **Course materials & course book:** 60 (adult student only)
- **Change:** 50
- **Document Courier:** 100
- **Travel & Medical Insurance:** 20
- **Special Diet Supplement:** 28  
Lunches only if taking leisure program

## KEY INFORMATION

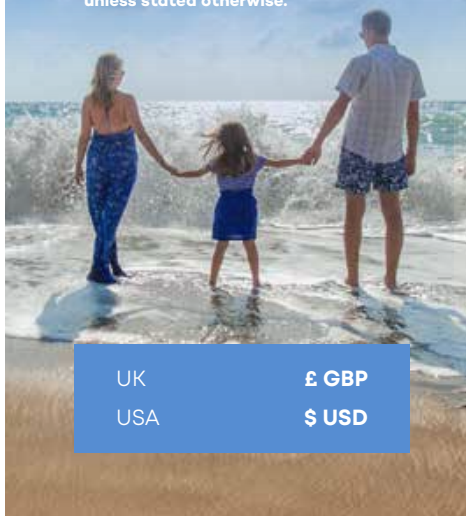
**Minimum stay:** 1 week

**Class size:** 15

**School closing dates:** 19 April.

The school is open for Young Learner courses only. One Private Tuition lesson can be given to the adult student(s) in lieu of this closure date.

**All prices are per person per week unless stated otherwise.**



UK £ GBP  
USA \$ USD

## OUR PROGRAMME

- Family Programme is designed for a minimum of 1 parent/guardian and 1 child and a maximum of 2 parents/guardians and 4 children.
- Parent/guardian can only take General English and no supplementary courses.\*
- LAL cannot supervise children aged 5-9 outside of the classroom.
- Tuition takes place in the morning for both adult and child at the same time (lesson timetables are staggered by 15 minutes).
- London: parents study at our school in Twickenham while children study at our Young Learner school 15 minutes' walk away.
- Fort Lauderdale: tuition takes place in the morning (lesson timetables are staggered by 30 minutes).

\*Students requiring an F1 Visa can take Semi Intensive English.

## FAMILY PROGRAMME

	Tuition Only	Semi Intensive English	Homestay	Hotel	Residence (per room)	Supplements					Afternoon leisure programme	Ages	Course Dates
						Homestay		Hotel	Residence	Special diet			
						Evening meal	Single room	Winter supplement 09 Dec 2019 - 14 Apr 2020					
London	250	-	140	200	-	35	50	155	-	20	-	12-17	30 Jun - 18 Aug
Torbay	215	-	95	175	-	35	50	50	-	20	165	5-9	07 Apr - 21 Apr 16 Jun - 01 Sep
Fort Lauderdale	350	400	-	-	385	-	-	-	161	28	205	5+*	07 Jan - 10 Feb 25 Jun - 24 Aug

\*When possible Young Learner students are grouped by age for lessons as follows: 5-6, 7-8, 9-11, 12-18. Students are grouped by age for excursions as follows: 5-11 and 12-18. Students aged 5-11 must be supervised at all times.

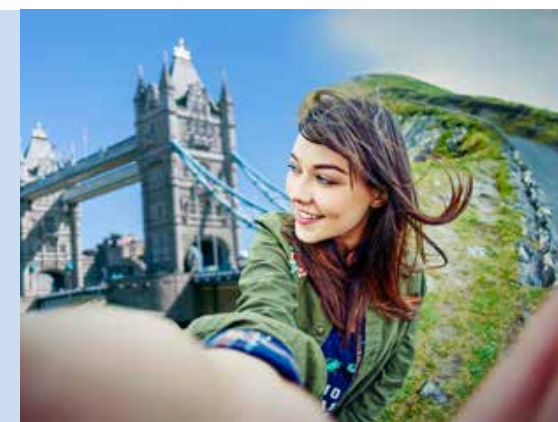
## TRANSFERS

Fort Lauderdale: Private transfers do not include car seats for children. Maximum 3 people per private transfer.

		Shared Transfers		Private Transfers		
		Inbound	Outbound	Inbound	Outbound	Extra passenger
London		Not available	Not available	60	60	-
Torbay		70	50	140	140	-
Fort Lauderdale	Fort Lauderdale (FLL)	25	25	150	-	25
Lauderdale	Miami (MIA)	75	75	150	-	25

## TWO-CENTRE COURSES

- Students can book two centre courses within England, the US or Ireland.
- Check our main Young Learner Price List
- Decide which two schools you want to visit.
- Add the weekly prices for each school.
- If you book two weeks, there will be an additional cost for the internal transfer. If you book three or more weeks, we will include internal transfers (school to airport or school to school). If you book four weeks in the US or between England and Ireland, we will also include the flight up to a maximum of €200/\$250. The flight will be booked by LAL and any extra cost will be added to the invoice.
- If you book two schools with different transfer days e.g. London and Tavistock, we will advise as to the transfer day. See information at the beginning of this price list.



Bestil til den laveste pris i verden på: <https://www.languagecourse.net/da/skole->  
+44-330 124 03 17 - [support-da@languagecourse.net](mailto:support-da@languagecourse.net)

lalschools.com



Designed by, published by and copyright August 2018 LAL Language Centres Holding Limited (registered in England no. 1525902) on behalf of LAL Language Centres UK Limited (LAL London and LAL Torbay), the Institute of English Language Studies (IELS Malta and IELS Gozo), LAL Language Centres South Africa (Pty) Ltd (LAL Cape Town) and LAL Language Centres Florida, Inc. (LAL Fort Lauderdale). Current information is available at [www.lalschools.com](http://www.lalschools.com). E&OE.