



Lexis Korea Gangnam Campus —



Summer Activity Program

/ Activities – Week 1



국립중앙박물관 (The National Museum)

The National Museum of Korea is the largest museum in Korea. Our students will be able to fully enjoy the six permanent exhibition halls arranged by era and topic, along with realistic content featuring cutting-edge technology allowing them to learn with all five senses.



한류스타 거리 (Hallyu K-Star Road)

Students will be able to discover Hallyu K-Star Road that is complete with symbolic images of famous K-pop groups printed on human-scale bear dolls. Out of the 17 available idol singer groups available are Super Junior, EXO, Girls Generation, and BTS, just to name a few.



아쿠아리움 (Lotte World Aquarium)

Lotte World Aquarium is one of South Korea's largest Aquariums with over 55,000 marine creatures. Our students will get to enjoy the exhibits and see for themselves various marine lives and ocean creatures.



태권도 (Tae Kwon Do)

Taekwondo is a traditional Korean martial art. Students get to watch a demonstration provided by a Taekwondo master, and then have a chance to learn a couple of moves.



한국 음식 만들기 (Korean Kitchen)

Our Korean Kitchen is the best way for our students to learn more about traditional Korean food. Students will be able to try making traditional dishes, such as Kimchi pancakes, Tteokbokki, etc.

/ Activities – Week 2



경복궁 & 한복체험 (Gyeongbokgung and Hanbok Experience)

Gyeongbokgung was the main royal palace of the Joseon Dynasty and today it is Korea's most well-known palace with the longest and most storied history. To introduce Korean culture and heritage to our students, they will even have a chance to rent Hanboks.



하이커 그라운드 (HiKR Ground)

HiKR Ground is a comprehensive exhibition hall that introduces and promotes Korean tourist attractions and Hallyu. Our students can enjoy both the past and present of Hallyu vividly through various experience programs.



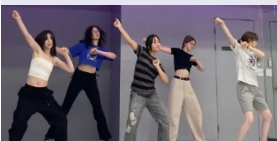
한국 전통 놀이 (Traditional Korean Games)

Our students can learn about Korean culture by playing fun traditional Korean games such as Yutnori, Ttakjichigi, Guseulchigi, and Tangtameokgi. Many of these games were featured in the hit Netflix series "Squid Game."



인사동 문화의 거리 & 박물관은 살아있다 (Insadong Culture Street and Alive Museum)

Our students will get to see beautiful traditional Korean handicrafts on Insadong Culture Street and enjoy the "Alive Museum" exhibition.



케이팝 댄스 (K-pop Dance)

Students will get to learn the dance choreography to selected popular K-pop songs.



/ Activities – Week 3



한강 유람선 (Han River Cruise)

Han River Ferry Cruise is one of the best ways to enjoy the scenery around Han River that flows through Seoul. The cruise will also sail through Banpo Bridge Rainbow Fountain and our students will be able to enjoy the Moonlight Rainbow Fountain show.



N 서울타워 (N Seoul Tower)

This communication tower on Namsan Mountain is the highest point in Seoul. Our students will experience taking a cable car up to the N Seoul Tower observation area to enjoy the beautiful view of Seoul.



한국무용 (Traditional Korean Fan Dance)

Our students will get to learn about 'Buchaechum' – a traditional fan dance that is performed by groups of Korean female dancers, using large fans painted with pink peony blossoms during celebrations.



롯데월드 (Lotte World)

Lotte World is a theme park filled with thrilling amusement rides, an ice rink and parades. The amusement park is divided into both the indoor and outdoor area with various entertainment, providing the perfect atmosphere for visitors of all ages.



한국 음식 만들기 (Korean Kitchen)

Our Korean Kitchen is the best way for our students to learn more about traditional Korean food. Students will be able to try making traditional dishes, such as Kimchi pancakes, Tteokbokki, etc.

/ Activities – Week 4



동대문 디자인 플라자 (Dongdaemun Design Plaza)

Dongdaemun area has a few large shopping centres and students will be able to shop and purchase some souvenirs. We will also visit the Dongdaemun Design Plaza (DDP) where the students will be able to visit the many exhibitions held at the DDP.



사물놀이체험 (Samulnori Experience)

"Samul nori" is a genre of percussion music that originated in Korea, and it's performed with four traditional Korean musical instruments. Our students will get to explore the harmonies that these four instruments can create. One instrument, on its own, may make a monotonous sound, but together, the four instruments can bring beautiful ensembles alive.



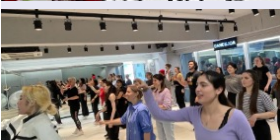
청와대 (Blue House)

The Blue House is a facility that was used as the office and official residence of the President of the Republic of Korea. Our students can see the Presidential Office, where the president performs his or her official duties, and the Presidential Palace, where they reside after work.



서예 활동 / 전통 공예 (Korean Calligraphy and Hand Craft)

Our Korean Calligraphy and Hand Craft workshop will enable us to introduce students to Korean culture in a fun way. During this workshop, they will learn how to write Hangul and make a Korean traditional folding fan.



케이팝 댄스 (K-pop Dance)

Students will get to learn the dance choreography to selected popular K-pop songs.



/ Activities – Week 5



연 만들기 (Kite Making)

Kites have been used as a means of communication since ancient times in Korea. Students will have the opportunity to make and decorate their own kites.



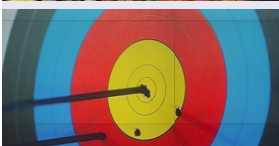
서울숲 (Seoul Forest)

Our students can enjoy various fun displays and experiences in the Ecological Forest, Experience Learning Center, Insect Botanical Garden, Butterfly Garden, and Wetland Ecological Garden in Seoul Forest.



창덕궁 (Changdeokgung)

Our students will visit Changdeokgung, which is listed as a World Cultural Heritage, to see and feel the beautiful palace and natural environment. Changdeokgung is a palace that was used more than Gyeongbokgung, the main palace.



양궁 체험 (Archery Experience)

Korea is the world's strongest archery powerhouse. Our students can have fun learning how to shoot arrows safely and accurately.



한강 수영장 (Han River Swimming Pool)

Our students can have fun playing in the pool with a view of the Han River. This outdoor oasis offers a delightful escape from the hustle and bustle of the city.

/ Activities – Week 6



롯데월드 민속박물관 (Lotte World Folk Museum)

Our students will see Korean history from the Palaeolithic to the modern age in an easy-to-understand and fun way through actual relics and reproduction models.



다이나믹 메이즈 (Dynamic Maze)

Our students can visit various themed zones and experience fun games or rides in Dynamic Maze. You can also take commemorative photos at the photo zone with all kinds of characters.



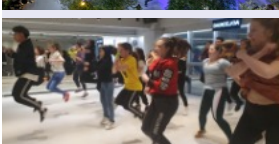
전통 가면 만들기 (Traditional Mask Making)

In medieval Korea, people wore various funny masks and put on plays. Our students will paint and make a variety of masks themselves and try on their own masks.



롯데월드 아이스링크 (Lotte World Ice Rink)

Our students will be able to escape the Korean summer heat while having lots of fun ice skating. Once they put on their skates, they'll be cool and refreshed.



케이팝 댄스 (K-pop Dance)

Students will get to learn the dance choreography to selected popular K-pop songs.

DISCLAIMER: Please note that in the event of unforeseen circumstances, the activities may change or be swapped around.

LanguageCourse^{net} Book at worldwide lowest price at:
<https://www.languagecourse.net/school-lexis-korea-seoul.php3>

🇺🇸 +1 646 503 18 10
 🇨🇦 +31 858880253

🇬🇧 +44 330 124 03 17
 🇩🇪 +7 4995000466

🇪🇸 +34 93 220 38 75
 🇫🇷 +46 844 68 36 76
 🇯🇵 +81 345 895 399

🇮🇹 +33 1-78416974
 🇩🇰 +47 219 30 570
 🇸🇪 +55 213 958 08 76

🇨🇭 +41 225 180 700
 🇩🇪 +45 898 83 996
 🇨🇳 +86 19816218990

🇩🇪 +49 221 162 56897
 🇮🇹 +39 02-94751194

🇮🇹 +43 720116182
 🇮🇹 +48 223 988 072

Lexis Japan Kobe Campus — 

Summer Activity Program

/ Activities – Week 1



Local Tour

On their first day, students are taken on an afternoon tour so they can be introduced to Motomachi/Sannomiya areas of Kobe. Lively towns with a large shopping arcade, China town district and gourmet cuisine.



Kobe Animal Kingdom

The Kobe Animal Kingdom is a very special place where you can really sense nature. Inside the greenhouse, there are hundreds of plants and flowers hung from the ceiling and they are just beautiful. You will get to feed animals and birds, and pat them too!



The Ramen Museum

Students will experience how cup noodles are produced as they knead, stretch and flavour flour making their very own chicken ramen. Students will also be able to wander through the museum and discover the history of the world's first instant noodle, invented in Ikeda, Japan.



Karaoke Competition

Join Karaoke! One of Japan's favourite past times. Sing your favourite songs in the comfort of sound proof rooms. Don't be shy! We can sing all together!



Osaka Castle

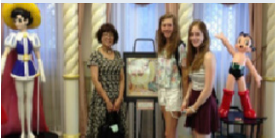
Osaka Castle is one of the most famous castles in Japan. It played a major role in the unification of 16th Century Japan. Take a step back in time and experience what life would have been like living in Osaka Castle, or take a walk through the famous Osaka Castle gardens.

/ Activities – Week 2



Local Tour or Free Time

Students will have the opportunity to explore the surrounding areas of Motomachi and Sannomiya.



Osamu Tezuka Manga Museum: The Creator of Astro Boy

The Tezuka Osamu Manga Museum in Takarazuka is where the world famous manga creator of Astro Boy lived for 20 years. The museum has many exhibitions about the life of the artist along with his visions for the creation of Astro Boy.



Cooking Class

A chance to learn how to cook some traditional Japanese dishes. Learn how to cook it and let's have nice Japanese lunch together. Don't forget to cook it for your family and friends when you go back to your country!



Bowling Competition

Time for some fun indoor exercise! A great fun activity on a hot summer's day. Win some prizes in a special time limit event! Go get a strike!!!

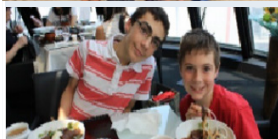


Pop Culture in West Japan

Take a visit to Osaka, the pop culture capital of West Japan. Visit the areas of Nipponbashi and Namba and experience the excitement of Japanese pop culture first hand.

**/ Activities – Week 3****Local Tour or Free Time**

Students will have the opportunity to explore the surrounding areas of Motomachi and Sannomiya.

**Kobe Beef Lunch**

Have you heard of Kobe beef? Kobe is well known world-wide thanks to Kobe beef! Enjoy the taste of the world famous succulent Kobe beef at one of Kobe's many famous Kobe beef restaurants.

**Calligraphy & Name Stamp Making**

Students can have the opportunity to try the traditional art of Shodo or Japanese Calligraphy. New to Kanji? Don't worry! You should be able to write your name in Kanji by the end of this activity! You will make your own name stamp (Hanko) too.

**Kobe Bay Cruise & Kobe Mosaic Ferris Wheel**

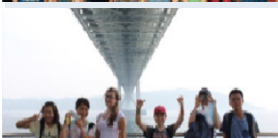
This recreational cruise lasts for 45 mins and travels to all the scenic attractions of the Kobe seaside, including Kobe Airport, Kobe Harbour, and the surrounding islands.

**Japanese Kimono Experience**

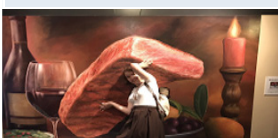
The summer Kimono is called Yukata and Japanese people enjoy wearing Yukata in summer. Choose your favourite pattern/colour yukata and visit nearby shops and temples!

/ Activities – Week 4**Local Tour or Free Time**

Students will have the opportunity to explore the surrounding areas of Motomachi and Sannomiya.

**Akashi Kaikyo Bridge & Kobe Premium Outlet**

Akashi Kaikyo Bridge is the longest suspension bridge in the world. This bridge links Kobe to Awaji Island. Kobe Premium Outlet is a very popular place for shopping for local people. It is a 15 minute walk from the Akashi Kaikyo Bridge along the beach.

**Trick Art Museum & Kitano Area**

The Kitano area is dotted with residences built by foreigners who arrived in Kobe after the port opened. It is a popular sightseeing area. The Trick Art Museum is located in one of these old European-style buildings. This is a very fun photo taking spot!

**Okonomiyaki Lunch & Kaleidoscope Making**

Okonomiyaki is a Japanese savoury pancake containing a variety of ingredients. The name is derived from the word okonomi, meaning "what you like" and yaki meaning "grilled" or "cooked". The dish is a popular meal in the Kansai region and renowned for being delicious.

**Osaka Aquarium**

One of Japan's most spectacular aquariums is located in the Tempozan Harbour village of Osaka's bay area. The aquarium exhibits various life forms that inhabit the Pacific Rim. The main tank, at 9 meters deep, houses the museum's main attraction – a whale shark!