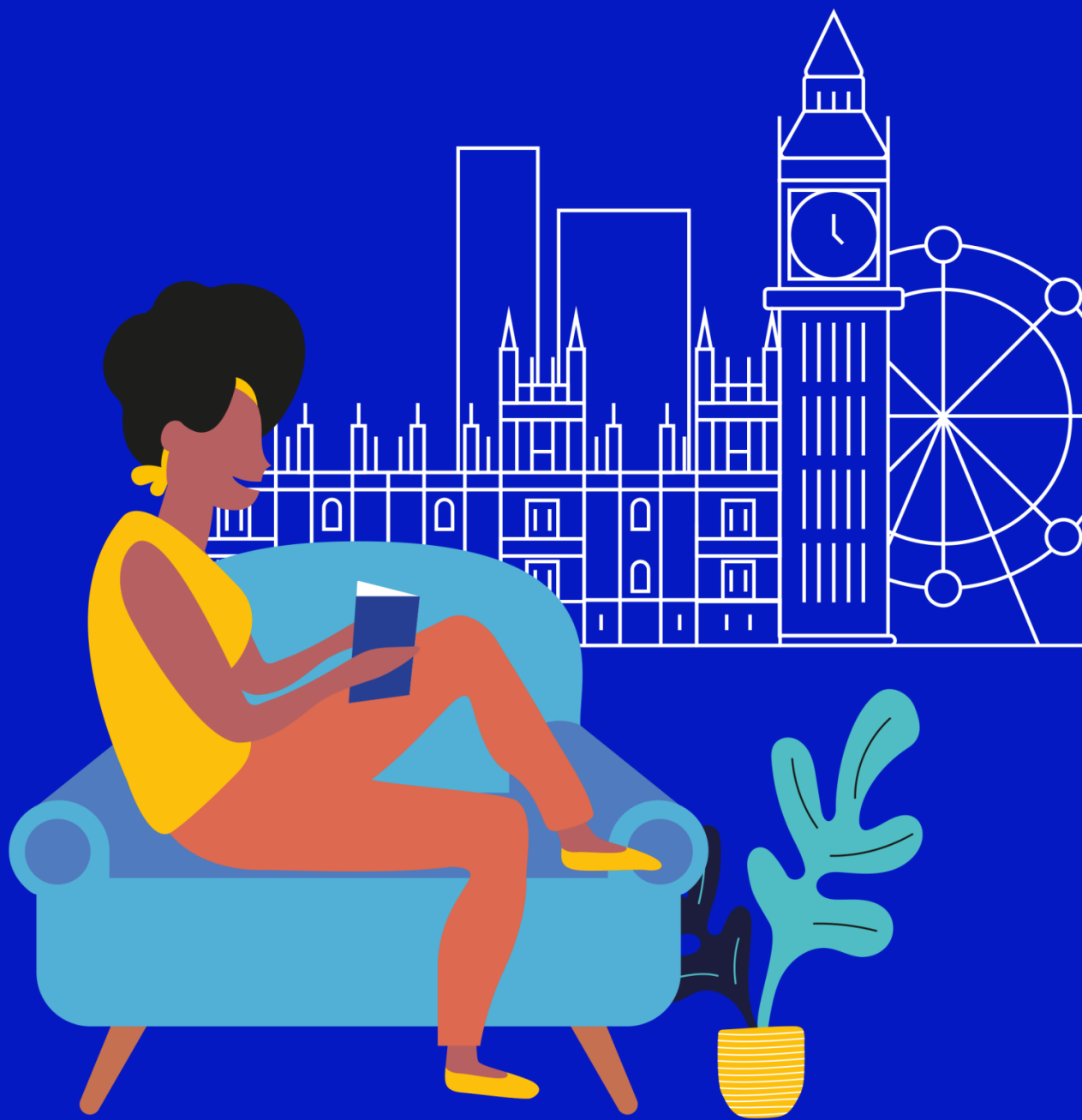


Accommodation London, UK 2023



www.lsi.edu

LanguageCourse^{net} Book at worldwide lowest price at:
<https://www.languagecourse.net/school-lsi---language-studies-international---central-london.php3>

🇺🇸 +1 646 503 18 10
🇧🇷 +31 858880253

🇬🇧 +44 330 124 03 17
🇫🇷 +7 4995000466

🇪🇸 +34 93 220 38 75
🇩🇪 +46 844 68 36 76
🇩🇪 +81 345 895 399

🇫🇷 +33 1-78416974
🇩🇪 +47 219 30 570
🇧🇷 +55 213 958 08 76

🇨🇦 +41 225 180 700
🇩🇪 +45 898 83 996
🇨🇦 +86 19816218990

🇩🇪 +49 221 162 56897
🇮🇹 +39 02-94751194

🇪🇸 +43 720116182
🇪🇸 +48 223 988 072

Accommodation in London (Central & Hampstead)

Homestay

Our homestays are carefully selected and offer students the opportunity to learn more about British culture in a comfortable setting while studying English in London.

- Welcoming and friendly atmosphere
- Carefully selected by our Accommodation Officer and visited on a regular basis
- Choice of single rooms (or twin rooms if two students book for the same period) with bed and breakfast or half board
- All bed linen and towels provided
- The majority of homestay hosts will do the laundry once a week
- Good and reliable transport links
- Students don't have access to kitchen facilities
- Commute time from the London homestays to LSI London Hampstead or London Central by public transportation can be up to 60 minutes
- Prices for the public transport can vary from zone 1-2 with GBP138.70 per month to zone 1-5 with GBP237.00 per month
- Students which stay for 14 weeks or more can apply for a Student Oyster Card to get a discount of 30% on the prices
- Arrivals between 7:00 am and 11:00 pm on Saturdays or Sundays
*Saturday arrivals subject to availability at London Hampstead, please check with the school



Executive Homestay Option

Executive Homestays are often of a higher standard than other homestay accommodations. They are evaluated in terms of décor, size and location (although they are not necessarily closer to LSI). They have private bathroom facilities (en-suite or sole use of a bathroom outside the room) and extra facilities such as a television in the bedroom.

Homestay Prices

Homestay Weekly Rates (per person, per week)

Single room, B&B [^]	GBP180	Twin room*, B&B [^]	GBP150
Single room, Half Board [^]	GBP230	Twin room*, Half Board [^]	GBP190

[^]45-60min from LSI London

Supplemental Rates (per person, per week)

Up to 45min from LSI London	GBP50	Special Diets B&B/HB	GBP25/45
		Executive Supplement**	GBP85
Summer Supplement (June 18 – August 27)	GBP35	Christmas Supplement	GBP50

Extra Night Rates (per person, per night)**

Single room, B&B [^]	GBP49	Twin room*, B&B [^]	GBP42
Single room, Half Board [^]	GBP60	Twin room*, Half Board [^]	GBP52
Single room, B&B, Up to 45min from LSI London	GBP55	Twin room*, B&B, Up to 45min from LSI London	GBP48
Single room, Half Board, Up to 45min from LSI London	GBP68	Twin room*, Half Board, Up to 45min from LSI London	GBP58

Executive Supplement

GBP30

[~]No extra nights during the summertime

Key

B&B = Bed and Breakfast (Breakfast only, no kitchen access); HB = Half Board (Breakfast and evening meals)

* For students booking together with the same arrival and departure dates.

** Subject to availability. Please check with the school before booking flight tickets.

*** Please note that during peak periods some of our homestay accommodations may be provided by a highly respected, British Council accredited agency that operates to the same high standards as LSI.

For more information contact LSI London Central E: lon@lsi.edu T: +44 (0)207 467 6500

Residences & Flat share

These options are more suitable for independent students. All students must be 18 or older, unless otherwise noted. For the London railway (underground and overground) network, please click here: <http://content.tfl.gov.uk/london-rail-and-tube-services-map.pdf>
For information about the prices of weekly and monthly travel passes, please click here: <https://tfl.gov.uk/campaign/new-fares>

Chapter Portobello

Location: ZONE 2 – approx. 30 minutes to LSI London Central, approx. 40 minutes to London Hampstead by public transport – nearest station: Westbourne Park (zone 2).

Minimum age: 18+

Rooms: Single and double studios

Private Bathroom: Yes, shower room

Meals: Self-catering

Facilities: Free internet, kitchenette, cinema room, games room, free gym on-site

Prices (per week per person): Studio: From GBP380;

Availability: Year-round

Other: Bed linen provided, towels not provided, cleaning service can be booked as an extra directly in the residence, kitchen pack provided for studios.

LSI student placements managed by an external agency. Minimum stay 1 week.

Cancellation policy: Free cancellation up to 3 weeks before the arrival date.



Don Gratton House

Location: ZONE 1/2- approx. 35 minutes to LSI London Central - approx. 45 minutes to LSI London Hampstead by public transport. Nearest station: Aldgate (zone 1)/Whitechapel (zone 2).

Minimum age: 18+

Rooms: En-suite rooms

Private Bathroom: Yes (shower room)

Meals: Self-catering

Facilities: Free Wi-Fi, shared fully equipped kitchens, common room, roof terrace, on-site laundry

Prices (per week per person): En-suite room: From GBP345.

Availability: Year-round

Other: Bed linen provided, towels not provided, cleaning before checking in, kitchen pack provided. LSI student placements managed by an external agency. Minimum stay 1 week.

Cancellation policy: Free cancellation for 3 weeks before arrival.



Drapery Place

Location: ZONE 1 – approx. 30 minutes to LSI London Central, approx. 40 minutes to London Hampstead by public transport – nearest station: Aldgate/Aldgate East (zone 1).

Minimum age: 18+

Rooms: En-suite (single or doubles)

Private Bathroom: Yes, shower room

Meals: Self-catering

Facilities: Free internet, kitchenette, games room, free gym on-site, bike storage

Prices (per week per person): En-suite room: from GBP 400.

Availability: Year-round

Other: Bed linen provided, towels not provided, kitchen pack provided for studios.

LSI student placements managed by an external agency. Minimum stay 2 weeks.

Cancellation policy: Free cancellation up to 3 weeks before the arrival date.



For more information contact LSI London Central E: lon@lsi.edu T: +44 (0)207 467 6500

Residences & Flat share

Lightfoot Hall

Location: Approx. 35 minutes to LSI London Central, approx. 50 minutes to LSI London Hampstead by public transport. Nearest station: South Kensington (zone 1).

Minimum age: 18+

Rooms: Twin en-suite rooms and executive studios

Private Bathroom: Yes

Meals: Self-catering

Facilities: Shared kitchen, on-site laundry, free Wi-Fi, bike storage

Prices (per week per person): Twin en-suite room (single occupancy): From GBP425;

Twin en-suite room (shared occupancy): From GBP235;*

Executive studio: From GBP465.

* For students booking together with the same arrival and departure dates.

Availability: Year-round

Other: 24-hour security, large communal areas. LSI student placements managed by an external agency.

Cancellation policy: Free cancellation up to 3 weeks before the arrival date.



Tottenham Hale House Share

Location: Approx. 30-35 minutes to LSI London Central and 40-45 minutes to LSI London Hampstead by public transport. Nearest station: Tottenham Hale (zone 3)

Minimum age: 18+

Rooms: Single and shared rooms in furnished flats of 4 – 8 people

Private Bathroom: No, shared bathroom

Meals: Self-catering

Facilities: Shared kitchen, laundry facilities. Common areas are serviced every 2 weeks.

Prices (per week per person): Check availability with the school

Availability: Year-round

Other: Bookings with departure dates in October, November and December not accepted.

Bed linen provided but not towels. Cleaning of the common areas is provided once a week. LSI student placements managed by an external agency. Minimum stay 4 weeks.

Cancellation policy: Free cancellation up to 5 weeks before the arrival date.



Canada Water House Share

Location: Approx. 20-30 min travel to LSI Central and 40-50 min travel to LSI Hampstead. A, depending on the exact location, which is confirmed 1 week before arrival.

Minimum age: 18+

Rooms: Single and twin rooms in flats of up to 6 people

Private Bathroom: Shared facilities and en-suite available

Meals: Self-catering

Facilities: Shared kitchen, living room, communal areas with internet and TV, laundry facilities

Prices (per week per person): Check availability with the school

Availability: Year-round

Other: Communal areas cleaned once weekly.

LSI student placements managed by an external agency. Minimum stay 1 week

Cancellation policy: Free cancellation up to 5 weeks before the arrival date.



For more information contact LSI London Central E: lon@lsi.edu T: +44 (0)207 467 6500