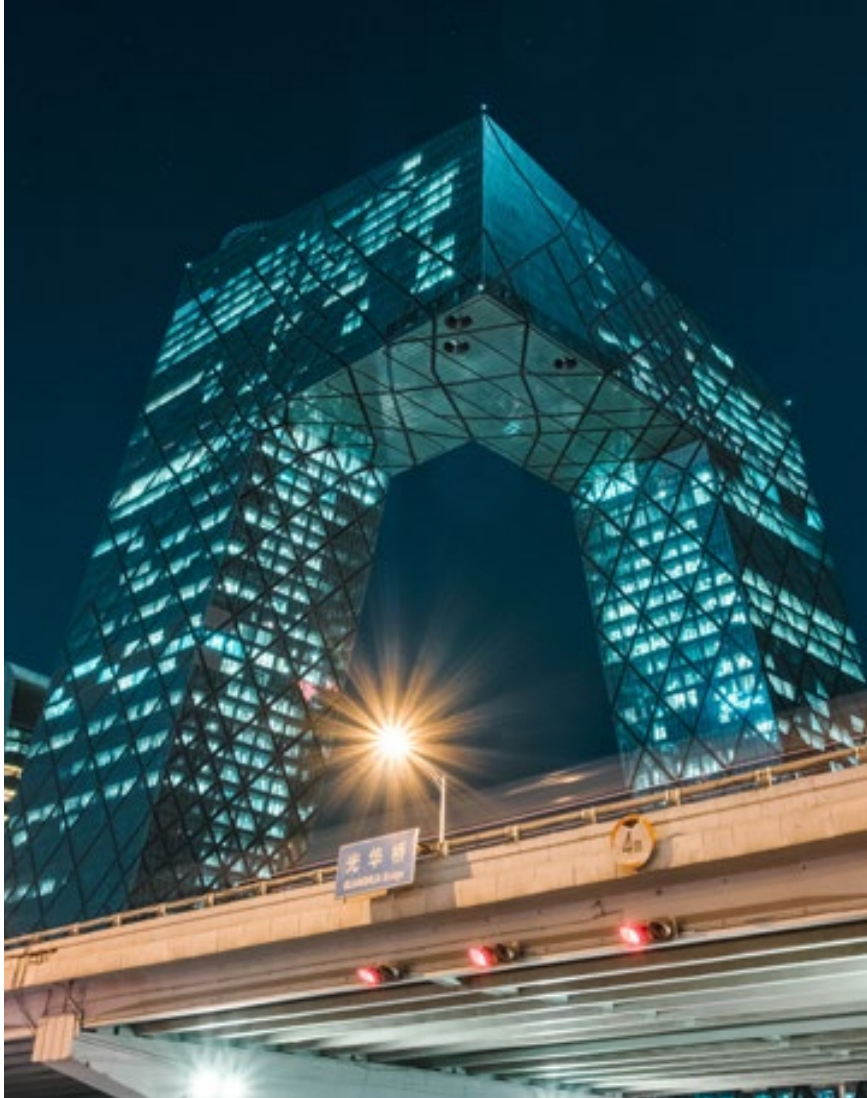




# LTL MANDARIN SCHOOL

— LIVE THE LANGUAGE —



## Price List

Complete price list for Chinese courses and accommodation in Beijing, Shanghai, Taipei, Chengde, Beihai, Xi'an, Chengdu and Singapore. Includes course start dates and discounts.

# Table of Contents

## 3 The LTL Guarantees

### BEIJING SHANGHAI CHENGDE

5 Chinese Courses

6 Accommodation

7 Upgrades

7 Other Services

8 Start Dates

### TAIPEI (TAIWAN)

9 Chinese Courses

10 Accommodation

11 Upgrades & Services

11 Start Dates

### XI'AN CHENGDU -30% DISCOUNT

12 Chinese Courses

13 Accommodation

14 Upgrades

14 Other Services

15 Start Dates

### BEIHAI -40% DISCOUNT

16 Chinese Courses

17 Accommodation

18 Upgrades & Services

18 Start Dates

### SINGAPORE +30% SUPPLEMENT

19 Chinese Courses

20 Accommodation

21 Upgrades & Services

21 Start Dates

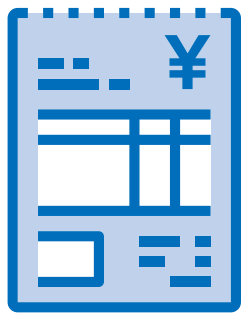
### MORE INFO

22 Discounts / Supplements

22 Other LTL Programs

23 Contact

# The LTL Guarantees



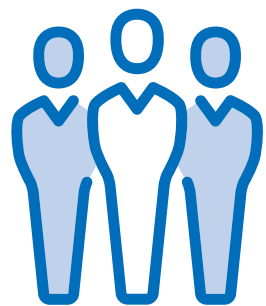
## NO HIDDEN FEES

All books and study materials are already included, no registration fee, no high season fee or other surcharges.



## CERTIFIED TEACHERS

All courses taught by qualified and certified native Chinese language teachers.



## SMALL GROUP CLASSES

Average of 3 and maximum of 6 (Beijing, Shanghai, Taipei & Singapore) or 8 (Beihai, Xi'an & Chengdu) students per class.



## 1 ON 1 CLASSES

One student, one teacher for 60 minutes.

### All LTL language courses already include:


- ✓ The LTL Online Chinese Kit
- ✓ Course Books
- ✓ Level Assessment
- ✓ Free Water, Tea, and Coffee at the School
- ✓ Cultural Activities
- ✓ Access to the LTL Social Community
- ✓ Students aged 18+: Free beer at the school after 5pm
- ✓ Access to the Online Student Group
- ✓ Practical Support from the LTL team
- ✓ WIFI at the School and Accommodation
- ✓ After Class Study Area
- ✓ Homework Support at the School

**Homestays:** Single rooms in centrally located nice apartments. Most are within walking distance of the school and are guaranteed to never be more than 45 minutes away. Vegan, vegetarian, gluten free, halal, kosher and no food homestay options available.

**Teach English Homestays:** Teach English to a member of the family for 6h/week, approximately 1h travel time to the school, usually much less, includes breakfast and dinner.

**Shared Apartments:** Shared with local and international students, never more than 45 minutes travel time to the school, usually much less, communal kitchen and common area.

**Studio Apartments:** private bathroom and kitchen, max. 45 minutes to school, usually much less, restaurants, shops & banks close by, weekly cleaning service.

 All options include free WIFI, heating, air conditioning, water, gas, and all other utilities

## Chinese Courses

## CNY Prices

Chinese Yuan CNY		Small Group	Small Group & Individual	Standard Individual	Intensive Individual
Beijing Shanghai Chengde	Duration Discount	20h Small Group Class	20h Small Group & 10h 1on1 Class	20h 1on1 Class	30h 1on1 Class
1 week	0	2,362	4,789	4,855	7,282
2 weeks	-2%	4,608	9,345	9,473	14,209
3 weeks	-5%	6,744	13,675	13,862	20,794
4 weeks	-7%	8,773	17,789	18,032	27,049
5 weeks	-9%	10,698	21,694	21,991	32,986
6 weeks	-12%	12,525	25,397	25,745	38,618
7 weeks	-14%	14,256	28,907	29,303	43,955
8 weeks	-16%	15,895	32,231	32,673	49,009
9 weeks	-18%	17,446	35,376	35,860	53,791
10 weeks	-20%	18,911	38,348	38,873	58,310
11 weeks	-22%	20,295	41,154	41,718	62,576
12 weeks	-24%	21,600	43,800	44,400	66,600
>12 /week	-24%	1,800	3,650	3,700	5,550

Chengde is a complete immersion program. All classes are 1on1 to ensure students don't meet other English speakers.

## Accommodation

## CNY Prices

Chinese Yuan CNY		Homestay		Shared Apartment		Studio Apartment
Beijing Shanghai Chengde	Duration Discount	Breakfast & Dinner	Teach English	Shared Bathroom	En-suite Bathroom	Studio
1 week	0	2,935	1,467	1,913	2,434	4,057
2 weeks	-3%	5,698	2,849	3,714	4,727	7,879
3 weeks	-6%	8,298	4,149	5,409	6,884	11,474
4 weeks	-9%	10,742	5,371	7,002	8,912	14,853
5 weeks	-11%	13,037	6,518	8,498	10,815	18,025
6 weeks	-14%	15,188	7,594	9,900	12,600	21,000
7 weeks	-16%	17,204	8,602	11,550	14,700	24,500
8 weeks	-19%	19,089	9,544	13,200	16,800	28,000
9 weeks	-21%	20,849	10,425	14,850	18,900	31,500
10 weeks	-23%	22,491	11,246	16,500	21,000	35,000
11 weeks	-26%	24,020	12,010	18,150	23,100	38,500
12 weeks	-28%	25,440	12,720	19,800	25,200	42,000
>12 per week	-28%	2,120	1,060	1,650	2,100	3,500
Extra Night		489	245	319	406	676

---

# Upgrades

## SAFARI (2h/day)

Get out of the classroom and practice your Chinese around Beijing or Shanghai. Only courses with a min. of 10h 1on1 class/week can be upgraded, beginner level only.

**1 week 500 CNY**

**2 weeks 900 CNY**

## DISCOVER YOUR CITY (4h/day)

Experience the city, get out of the class room and study at a different historic location every day. Only courses with a min. of 20h 1on1 class/week can be upgraded. Tickets & transport cost to be paid at location if applicable.

**1 week 1,000 CNY**

**2 weeks 1,800 CNY**

---

# Other Services

Survival Kit Standard **1,815 CNY**

Survival Kit Comfort **2,915 CNY**

Connection Kit **900 CNY**

Beijing Airport Pickup **300 CNY**

Shanghai Airport Pickup **350 CNY**

**[Click here for more info](#)**

# Start Dates : Any Monday

ALL CITIES

Non Complete Beginner Students can start all courses on any Monday.  
All Individual Chinese Courses can start on any Monday.

## Small Group Class Start Dates

BEIJING 北京

*For Complete Beginner Students*

- Jan 20<sup>th</sup>
- Feb 10<sup>th</sup>
- Mar 2<sup>nd</sup>
- Mar 23<sup>rd</sup>
- Apr 13<sup>rd</sup>
- May 4<sup>th</sup>
- May 25<sup>th</sup>
- Jun 15<sup>th</sup>
- Jul 6<sup>th</sup>
- Jul 20<sup>th</sup>
- Aug 3<sup>rd</sup>
- Aug 17<sup>th</sup>
- Aug 31<sup>st</sup>
- Sep 21<sup>st</sup>
- Oct 12<sup>nd</sup>
- Nov 9<sup>th</sup>
- Nov 30<sup>th</sup>
- Dec 21<sup>st</sup>

## Small Group Class Start Dates

SHANGHAI 上海

*For Complete Beginner Students*

- Jan 13<sup>rd</sup>,
- Feb 3<sup>rd</sup>,
- Feb 24<sup>th</sup>,
- Mar 16<sup>th</sup>,
- Apr 6<sup>th</sup>,
- Apr 27<sup>th</sup>,
- May 18<sup>th</sup>,
- Jun 8<sup>th</sup>,
- Jun 29<sup>th</sup>,
- Jul 13<sup>rd</sup>,
- Jul 27<sup>th</sup>,
- Aug 10<sup>th</sup>,
- Aug 24<sup>th</sup>,
- Sep 21<sup>st</sup>,
- Oct 12<sup>nd</sup>,
- Nov 2<sup>nd</sup>,
- Nov 23<sup>rd</sup>,
- Dec 14<sup>th</sup>

If possible we recommend starting your course on a Complete Beginner Starting Date as there are additional social activities and it is easier to settle in.

Classes in Chengde are always 1on1 and therefore can start on any Monday.



# Chinese Courses

# NTD Prices

New Taiwan Dollar NTD		Small Group	Small Group & Individual	Standard Individual	Intensive Individual
Taipei	Duration Discount	20h Small Group Class	20h Small Group & 10h 1on1 Class	20h 1on1 Class	30h 1on1 Class
1 week	0	10,628	21,551	21,846	32,769
2 weeks	-2%	20,737	42,051	42,627	63,940
3 weeks	-5%	30,347	61,538	62,381	93,571
4 weeks	-7%	39,476	80,049	81,146	121,718
5 weeks	-9%	48,142	97,621	98,958	148,437
6 weeks	-12%	56,361	114,288	115,853	173,780
7 weeks	-14%	64,151	130,084	131,866	197,798
8 weeks	-16%	71,527	145,041	147,028	220,542
9 weeks	-18%	78,505	159,191	161,372	242,058
10 weeks	-20%	85,101	172,565	174,929	262,394
11 weeks	-22%	91,328	185,192	187,729	281,593
12 weeks	-24%	97,200	197,100	199,800	299,700
>12 /week	-24%	8,100	16,425	16,650	24,975

# Accommodation

# NTD Prices

New Taiwan Dollar NTD		Homestay		Shared Apartment		Studio Apartment
Taipei	Duration Discount	Breakfast & Dinner	Teach English	Shared Bathroom	En-suite Bathroom	Studio
1 week	0	13,206	6,603	8,608	10,955	18,259
2 weeks	-3%	25,642	12,821	16,714	21,272	35,454
3 weeks	-6%	37,343	18,671	24,340	30,979	51,631
4 weeks	-9%	48,340	24,170	31,509	40,102	66,837
5 weeks	-11%	58,665	29,332	38,239	48,668	81,113
6 weeks	-14%	68,348	34,174	44,550	56,700	94,500
7 weeks	-16%	77,416	38,708	51,975	66,150	110,250
8 weeks	-19%	85,899	42,949	59,400	75,600	126,000
9 weeks	-21%	93,822	46,911	66,825	85,050	141,750
10 weeks	-23%	101,210	50,605	74,250	94,500	157,500
11 weeks	-26%	108,088	54,044	81,675	103,950	173,250
12 weeks	-28%	114,480	57,240	89,100	113,400	189,000
>12 per week	-28%	9,540	4,770	7,425	9,450	15,750
Extra Night		2,201	1,100	1,435	1,826	3,043

# Upgrades & Services

TAIPEI 台北

**TAIPEI SAFARI**                      **1 week 2,250 NTD**                      **2 weeks 4,050 NTD**

Get out of the classroom and practice your Chinese around Taipei.

**DISCOVER TAIPEI**                      **1 week 4,500 NTD**                      **2 weeks 8,100 NTD**

Experience the city and study at a different historic location every day.

Survival Kit Standard **8,167 NTD**

Connection Kit **4,050 NTD**

Survival Kit Comfort **13,117 NTD**

Taipei Airport Pickup **1,500 NTD**

[Click here for more info](#)

## Start Dates

TAIPEI 台北

Individual Courses can start any day all year. For Group Courses, Non Complete Beginner students can start on any Monday all year. Complete Beginner students can start on the dates listed below.

- Jan 6<sup>th</sup>
- Feb 3<sup>rd</sup>
- Feb 17<sup>th</sup>
- Mar 9<sup>th</sup>
- Mar 30<sup>th</sup>
- Apr 20<sup>th</sup>
- May 11<sup>st</sup>
- Jun 1<sup>st</sup>
- Jun 22<sup>nd</sup>
- Jul 13<sup>rd</sup>
- Jul 27<sup>th</sup>
- Aug 10<sup>th</sup>
- Aug 24<sup>th</sup>
- Sep 14<sup>th</sup>
- Oct 5<sup>th</sup>
- Oct 26<sup>th</sup>
- Nov 16<sup>th</sup>
- Dec 7<sup>th</sup>
- Dec 28<sup>th</sup>

# Chinese Courses

## -30% City Discount

Chinese Yuan CNY		Small Group	Small Group & Individual	Standard Individual	Intensive Individual
Xi'an Chengdu	Duration Discount	20h Small Group Class	20h Small Group & 10h 1on1 Class	20h 1on1 Class	30h 1on1 Class
1 week	0	1,653	3,352	3,398	5,097
2 weeks	-2%	3,226	6,541	6,631	9,946
3 weeks	-5%	4,721	9,573	9,704	14,555
4 weeks	-7%	6,141	12,452	12,623	18,934
5 weeks	-9%	7,489	15,185	15,393	23,090
6 weeks	-12%	8,767	17,778	18,022	27,032
7 weeks	-14%	9,979	20,235	20,512	30,769
8 weeks	-16%	11,126	22,562	22,871	34,307
9 weeks	-18%	12,212	24,763	25,102	37,653
10 weeks	-20%	13,238	26,843	27,211	40,817
11 weeks	-22%	14,207	28,808	29,202	43,803
12 weeks	-24%	15,120	30,660	31,080	46,620
>12 /week	-24%	1,260	2,555	2,590	3,885

# Accommodation

# -30% City Discount

Chinese Yuan CNY		Homestay		Shared Apartment		Studio Apartment
Xi'an Chengdu	Duration Discount	Breakfast & Dinner	Teach English	Shared Bathroom	En-suite Bathroom	Studio
1 week	0	2,054	1,027	1,339	1,704	2,840
2 weeks	-3%	3,989	1,994	2,600	3,309	5,515
3 weeks	-6%	5,809	2,904	3,786	4,819	8,032
4 weeks	-9%	7,520	3,760	4,901	6,238	10,397
5 weeks	-11%	9,126	4,563	5,948	7,571	12,618
6 weeks	-14%	10,632	5,316	6,930	8,820	14,700
7 weeks	-16%	12,043	6,021	8,085	10,290	17,150
8 weeks	-19%	13,362	6,681	9,240	11,760	19,600
9 weeks	-21%	14,594	7,297	10,395	13,230	22,050
10 weeks	-23%	15,744	7,872	11,550	14,700	24,500
11 weeks	-26%	16,814	8,407	12,705	16,170	26,950
12 weeks	-28%	17,808	8,904	13,860	17,640	29,400
>12 per week	-28%	1,484	742	1,155	1,470	2,450
Extra Night		342	171	223	284	473

---

# Upgrades

## SAFARI (2h/day)

Get out of the classroom and practice your Chinese around Xi'an or Chengdu. Only courses with a min. of 10h 1on1 class/week can be upgraded, beginner level only.

**1 week 350 CNY**

**2 weeks 630 CNY**

## DISCOVER YOUR CITY (4h/day)

Experience the city, get out of the class room and study at a different historic location every day. Only courses with a min. of 20h 1on1 class/week can be upgraded. Tickets & transport cost to be paid at location if applicable.

**1 week 700 CNY**

**2 weeks 1,260 CNY**

---

# Other Services

Survival Kit Standard **1,270 CNY**

Survival Kit Comfort **2,040 CNY**

Connection Kit **630 CNY**

Xi'an Airport Pickup **350 CNY**

Chengdu Airport Pickup **350 CNY**

**[Click here for more info](#)**

# Start Dates : Any Monday

ALL CITIES

Non Complete Beginner Students can start their courses on any Monday.

All Individual Chinese Courses can start on any Monday.

## Small Group Class Start Dates

XI'AN 西安

*For Complete Beginner Students*

- Jan 20<sup>th</sup>
- Feb 10<sup>th</sup>
- Mar 2<sup>nd</sup>
- Mar 23<sup>rd</sup>
- Apr 13<sup>rd</sup>
- May 4<sup>th</sup>
- May 25<sup>th</sup>
- Jun 15<sup>th</sup>
- Jul 6<sup>th</sup>
- Jul 20<sup>th</sup>
- Aug 3<sup>rd</sup>
- Aug 17<sup>th</sup>
- Aug 31<sup>st</sup>
- Sep 21<sup>st</sup>
- Oct 12<sup>nd</sup>
- Nov 9<sup>th</sup>
- Nov 30<sup>th</sup>
- Dec 21<sup>st</sup>

## Small Group Class Start Dates

CHENGDU 成都

*For Complete Beginner Students*

- Jan 13<sup>rd</sup>
- Feb 3<sup>rd</sup>
- Feb 24<sup>th</sup>
- Mar 16<sup>th</sup>
- Apr 6<sup>th</sup>
- Apr 27<sup>th</sup>
- May 18<sup>th</sup>
- Jun 8<sup>th</sup>
- Jun 29<sup>th</sup>
- Jul 13<sup>th</sup>
- Jul 27<sup>th</sup>
- Aug 10<sup>th</sup>
- Aug 24<sup>th</sup>
- Sep 21<sup>st</sup>
- Oct 12<sup>nd</sup>
- Nov 2<sup>nd</sup>
- Nov 23<sup>rd</sup>
- Dec 14<sup>th</sup>

If possible we recommend starting your course on a Complete Beginner Starting Date as there are additional social activities and it is easier to settle in.

## Chinese Courses

-40% City Discount

Chinese Yuan CNY		Small Group	Small Group & Individual	Standard Individual	Intensive Individual
Beihai	Duration Discount	20h Small Group Class	20h Small Group & 10h 1on1 Class	20h 1on1 Class	30h 1on1 Class
1 week	0	1,417	2,873	2,913	4,369
2 weeks	-2%	2,765	5,607	5,684	8,525
3 weeks	-5%	4,046	8,205	8,317	12,476
4 weeks	-7%	5,264	10,673	10,819	16,229
5 weeks	-9%	6,419	13,016	13,194	19,792
6 weeks	-12%	7,515	15,238	15,447	23,171
7 weeks	-14%	8,553	17,344	17,582	26,373
8 weeks	-16%	9,537	19,339	19,604	29,406
9 weeks	-18%	10,467	21,226	21,516	32,274
10 weeks	-20%	11,347	23,009	23,324	34,986
11 weeks	-22%	12,177	24,692	25,031	37,546
12 weeks	-24%	12,960	26,280	26,640	39,960
>12 /week	-24%	1,080	2,190	2,220	3,330



## Accommodation

-40% City Discount

Chinese Yuan CNY		Homestay		Shared Apartment		Studio Apartment
Beihai	Duration Discount	Breakfast & Dinner	Teach English	Shared Bathroom	En-suite Bathroom	Studio
1 week	0	1,761	880	1,148	1,461	2,434
2 weeks	-3%	3,419	1,709	2,229	2,836	4,727
3 weeks	-6%	4,979	2,490	3,245	4,131	6,884
4 weeks	-9%	6,445	3,223	4,201	5,347	8,912
5 weeks	-11%	7,822	3,911	5,099	6,489	10,815
6 weeks	-14%	9,113	4,557	5,940	7,560	12,600
7 weeks	-16%	10,322	5,161	6,930	8,820	14,700
8 weeks	-19%	11,453	5,727	7,920	10,080	16,800
9 weeks	-21%	12,510	6,255	8,910	11,340	18,900
10 weeks	-23%	13,495	6,747	9,900	12,600	21,000
11 weeks	-26%	14,412	7,206	10,890	13,860	23,100
12 weeks	-28%	15,264	7,632	11,880	15,120	25,200
>12 per week	-28%	1,272	636	990	1,260	2,100
Extra Night		293	147	191	243	406

# Upgrades & Services

**BEIHAI 北海**

**BEIHAI SAFARI**                      **1 week 300 CNY**                      **2 weeks 540 CNY**

Get out of the classroom and practice your Chinese around Beihai.

**DISCOVER BEIHAI**                      **1 week 600 CNY**                      **2 weeks 1,080 CNY**

Experience the city and study at a different historic location every day.

Survival Kit Standard **1,089 CNY**

Connection Kit **540 CNY**

Survival Kit Comfort **1,749 CNY**

Beihai Airport Pickup **350 CNY**

[Click here for more info](#)

# Start Dates

**BEIHAI 北海**

Individual Courses can start any day all year. For Group Courses, Non Complete Beginner students can start on any Monday all year. Complete Beginner students can start on the dates listed below.

- Jan 6<sup>th</sup>
- Feb 3<sup>rd</sup>
- Feb 24<sup>th</sup>
- Mar 9<sup>th</sup>
- Mar 30<sup>th</sup>
- Apr 20<sup>th</sup>
- May 11<sup>st</sup>
- Jun 1<sup>st</sup>
- Jun 22<sup>nd</sup>
- Jul 13<sup>rd</sup>
- Jul 27<sup>th</sup>
- Aug 10<sup>th</sup>
- Aug 24<sup>th</sup>
- Sep 14<sup>th</sup>
- Oct 19<sup>th</sup>
- Nov 16<sup>th</sup>
- Dec 7<sup>th</sup>
- Dec 28<sup>th</sup>

## Chinese Courses

+30% Supplement

Singapore Dollar SGD		Small Group	Small Group & Individual	Standard Individual	Intensive Individual
Singapore	Duration Discount	20h Small Group Class	20h Small Group & 10h 1on1 Class	20h 1on1 Class	30h 1on1 Class
1 week	0	585	1,186	1,202	1,803
2 weeks	-2%	1,141	2,314	2,346	3,518
3 weeks	-5%	1,670	3,386	3,433	5,149
4 weeks	-7%	2,172	4,405	4,465	6,698
5 weeks	-9%	2,649	5,372	5,445	8,168
6 weeks	-12%	3,101	6,289	6,375	9,563
7 weeks	-14%	3,530	7,158	7,256	10,884
8 weeks	-16%	3,936	7,981	8,090	12,136
9 weeks	-18%	4,320	8,760	8,880	13,320
10 weeks	-20%	4,683	9,496	9,626	14,439
11 weeks	-22%	5,025	10,190	10,330	15,495
12 weeks	-24%	5,349	10,846	10,994	16,491
>12 /week	-24%	446	904	916	1,374

## Accommodation

+30% Supplement

Singapore Dollar SGD		Homestay		Shared Apartment		Studio Apartment
Singapore	Duration Discount	Breakfast & Dinner	Teach English	Shared Bathroom	En-suite Bathroom	Studio
1 week	0	727	363	474	603	1,005
2 weeks	-3%	1,411	705	920	1,171	1,951
3 weeks	-6%	2,055	1,027	1,339	1,705	2,841
4 weeks	-9%	2,660	1,330	1,734	2,207	3,678
5 weeks	-11%	3,228	1,614	2,104	2,678	4,463
6 weeks	-14%	3,761	1,880	2,451	3,120	5,200
7 weeks	-16%	4,260	2,130	2,860	3,640	6,067
8 weeks	-19%	4,727	2,363	3,269	4,160	6,933
9 weeks	-21%	5,163	2,581	3,677	4,680	7,800
10 weeks	-23%	5,569	2,785	4,086	5,200	8,667
11 weeks	-26%	5,948	2,974	4,494	5,720	9,533
12 weeks	-28%	6,299	3,150	4,903	6,240	10,400
>12 per week	-28%	525	262	409	520	867
Extra Night		121	61	79	100	167

# Upgrades & Services

SINGAPORE 新加坡

## SINGAPORE SAFARI

1 week 124 SGD

2 weeks 223 SGD

Get out of the classroom and practice your Chinese around Singapore.

## DISCOVER SINGAPORE

1 week 248 SGD

2 weeks 446 SGD

Experience the city and study at a different historic location every day.

Survival Kit Standard 450 SGD

Connection Kit 223 SGD

Survival Kit Comfort 722 SGD

Singapore Airport Pickup 87 SGD

[Click here for more info](#)

# Start Dates

SINGAPORE 新加坡

Individual Courses can start any day all year. For Group Courses, Non Complete Beginner students can start on any Monday all year. Complete Beginner students can start on the dates listed below.

- Jan 20<sup>th</sup>
- Feb 10<sup>th</sup>
- Mar 2<sup>nd</sup>
- Mar 23<sup>rd</sup>
- Apr 13<sup>rd</sup>
- May 4<sup>th</sup>
- May 25<sup>th</sup>
- Jun 15<sup>th</sup>
- Jul 6<sup>th</sup>
- Jul 20<sup>th</sup>
- Aug 3<sup>rd</sup>
- Aug 17<sup>th</sup>
- Aug 31<sup>st</sup>
- Sep 21<sup>st</sup>
- Oct 12<sup>nd</sup>
- Nov 9<sup>th</sup>
- Nov 30<sup>th</sup>
- Dec 21<sup>st</sup>

---

## Discounts / Supplements 2020

Christmas Discount: Start your four weeks or longer course in December 2020 and get **50% off** from the 21st Dec 2020 - 1st Jan 2021.

Chinese New Year Homestay supplement: 1,000 CNY.

[Click here for more info](#)

National Holidays: Class times might have to be adjusted during holidays, however you never lose any classes due to a national holiday at LTL. All classes you paid for will be taught. Only in case of natural disasters like earthquakes or typhoons classes will be canceled according to government regulations.

---

## Other LTL Programs

Find prices and information about our [Summer Camp](#), [Age 50+](#) [Master Classes](#), [High School](#), [Study on the Great Wall](#) and [Multi City Programs](#) on our website [www.ltl-school.com](http://www.ltl-school.com).

# Contact for All LTL Schools

✉ info@ltl-school.com

☎ +86 (0) 10 65129057

🕒 Mon-Fri 9am - 6pm Beijing time

📘 www.facebook.com/LTLSchool

🌐 Learn more about LTL School Programs: [www.ltl-school.com](http://www.ltl-school.com) ➔

Individual City Websites: [www.ltl-beijing.com](http://www.ltl-beijing.com) ➔

[www.ltl-shanghai.com](http://www.ltl-shanghai.com) ➔

[www.ltl-taiwan.com](http://www.ltl-taiwan.com) ➔

[www.ltl-beihai.com](http://www.ltl-beihai.com) ➔

[www.ltl-xian.com](http://www.ltl-xian.com) ➔

[www.ltl-chengdu.com](http://www.ltl-chengdu.com) ➔

[www.ltl-singapore.com](http://www.ltl-singapore.com) ➔



**LTL MANDARIN SCHOOL**  
— LIVE THE LANGUAGE —