

OHLA SCHOOLS



Youth Plus Program 2024





OHLA SCHOOLS

Miami Campus

825 BRICKELL BAY DRIVE, TOWER 18TH FLOOR
MIAMI, FL 33131

- | | |
|--|---|
| 1 Won "Best Language School" in Miami for 13 consecutive years. | 2 Located in the Financial District of Miami called "Brickell". |
| 3 14 classrooms and 2 computer labs. | 4 The campus sits over 300 students. |
| 5 Graduate Center area designed for students moving on to Higher Education. | 6 Each classroom equipped with SmartBoards, computers and full Wi-Fi access. |
| 7 Onsite access to restaurants, café and convenience store. | 8 Onsite residence option. Students take an elevator to class. |

Partner universities nearby: Florida International University and Westcliff University



PROGRAM HIGHLIGHTS

DATES

- July 7, 2024 - July 20, 2024
- August 4, 2024 - August 17, 2024

LENGTH

2 weeks

GROUP SIZE

- 20 students + 2 free group leaders

AGE GROUP

16 + years of age

CAMPUS

Miami Campus

RESIDENCE PROGRAM

MIAMI CAMPUS

RESIDENCE ACCOMMODATION

Students are housed at the Garden Inn Residence. Placements are done in "double occupancy", meaning two (2) students (same gender) from the group are placed per room. Group leader of same gender placed together.

More about the residence:

Bright and inviting guest rooms, offering beautiful Bay, City or Pool views. Located near the campus and Brickell City Center and Mary Brickell Village.

MEALS

Three meals per days (full-board). There is a Full Buffet Breakfast at the residence. Lunches and dinners are provided as per the below information:

- Students are given \$30 per day for daily meals. *Group leaders are given cash to provide students, students choose from the many restaurant and café options located around the school.*

CLASS SCHEDULE

Monday to Thursday

9:00 AM to 10:45 AM

15 min break

11:00 AM to 12:45 PM

RESIDENCE PROGRAM

MIAMI CAMPUS



AFTERCLASS SCHEDULE

Lunch

12:45 PM to 1:45 PM

Activities

1:45 PM to 6:00 PM

SAMPLE ACTIVITIES CALENDAR

Date	Activity
7/7/24	Arrival and transfer to the Residence
7/8/24	ESL classes and Visit Wynwood Walls & the Design district
7/9/24	ESL classes and Perez Art Museum
7/10/24	ESL classes and Free Afternoon
7/11/24	ESL classes and Visit the Everglades
7/12/24	OHLA LIFE and Visit of the Art Deco District
7/13/24	Free Day or optional weekend in Orlando
7/14/24	Free Day or optional weekend in Orlando
7/15/24	ESL classes and enjoy a movie at CMX
7/16/24	ESL classes and enjoy the Bayside Boat tour
7/17/24	ESL classes and Free Afternoon
7/18/24	ESL classes and Spend the Afternoon at Nikki beach
7/19/24	OHLA LIFE + Shopping at Dolphin Mall
7/20/24	Transfer to airport and departure

RESIDENCE PROGRAM

MIAMI CAMPUS



TRANSPORTATION

Airport Transfer

Included to and from Miami International Airport.

Activities

Included local transportation between activities & school.

TOTAL PROGRAM COST

20 STUDENTS + 2 FREE GROUP LEADERS

\$2,750.00 USD per student

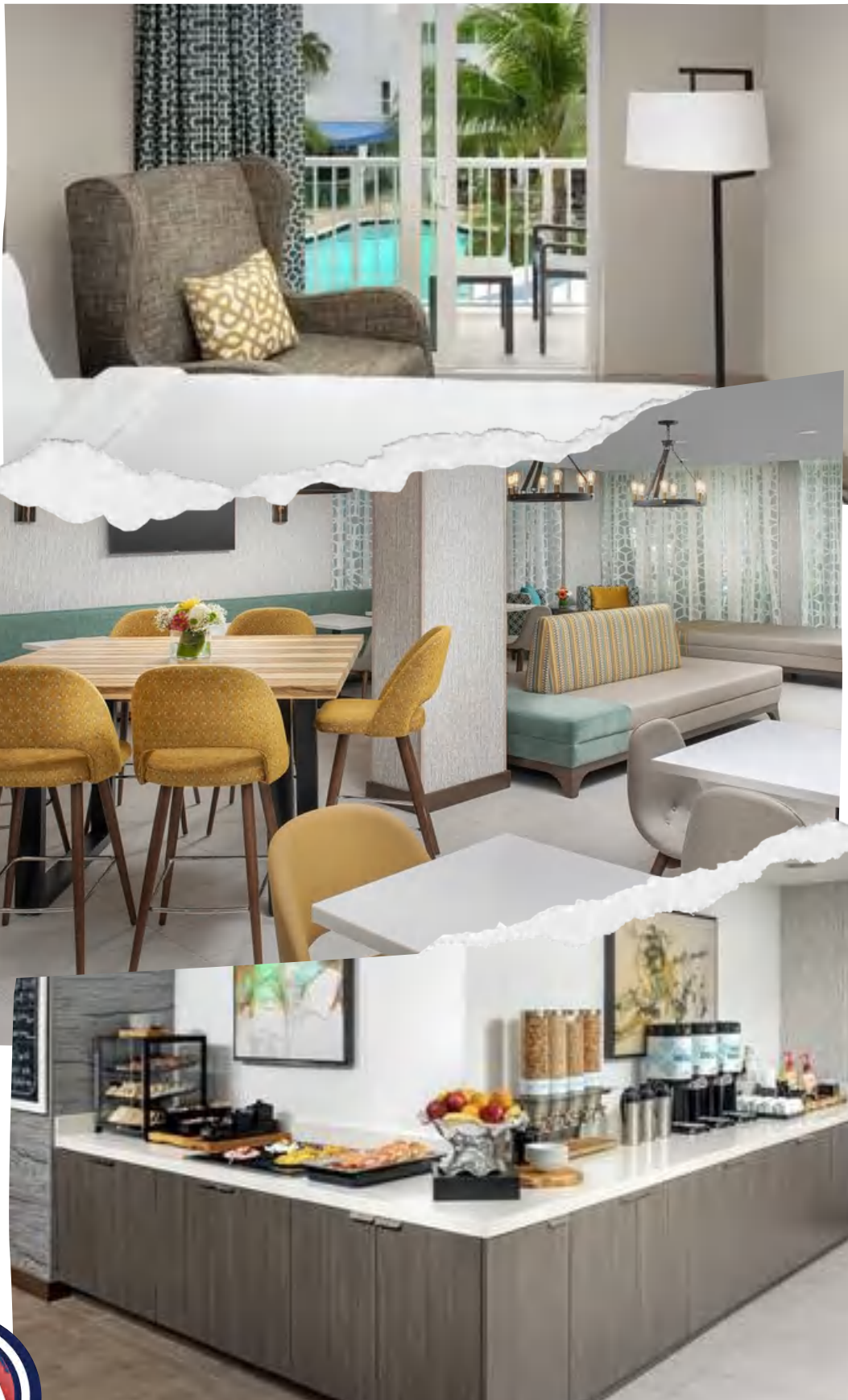
Prices quoted are net and non-commissionable. Prices are based on the projected number of paying students and group leaders. We reserve the right to re-adjust the price based on the actual number of students in the program.

MIAMI RESIDENCE
GARDEN INN



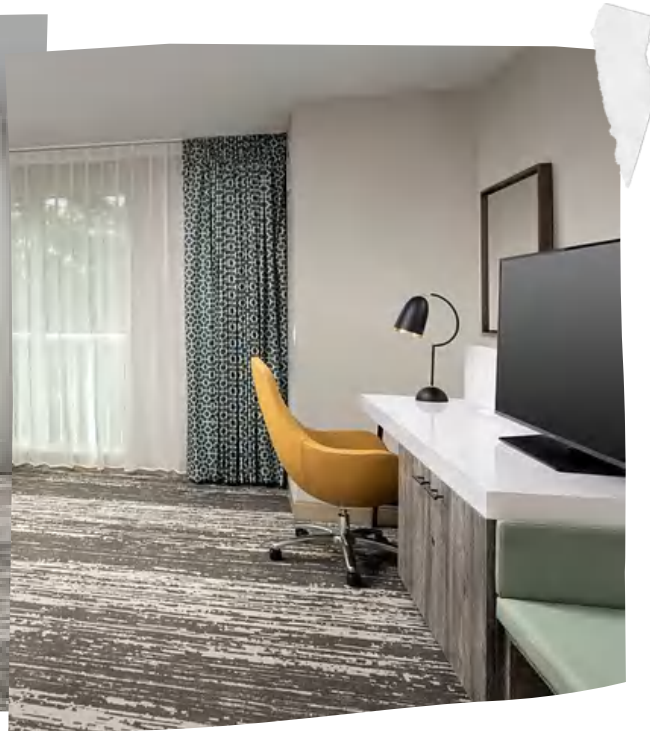
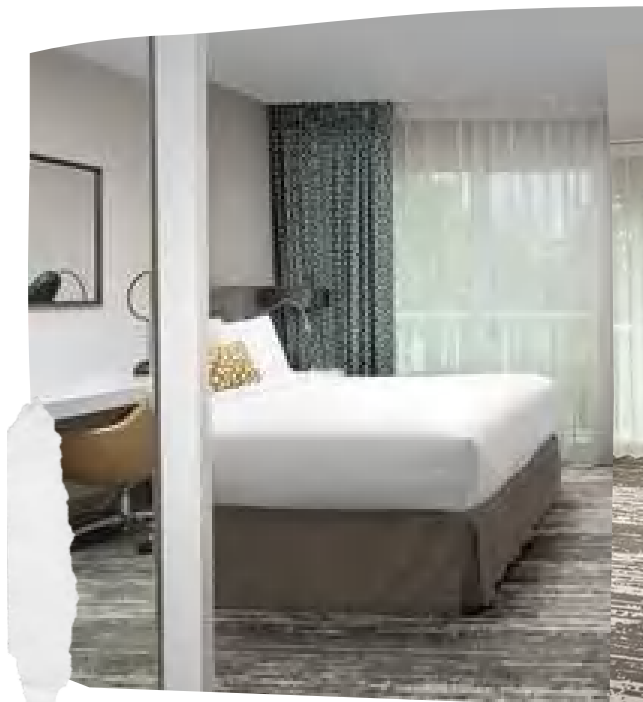
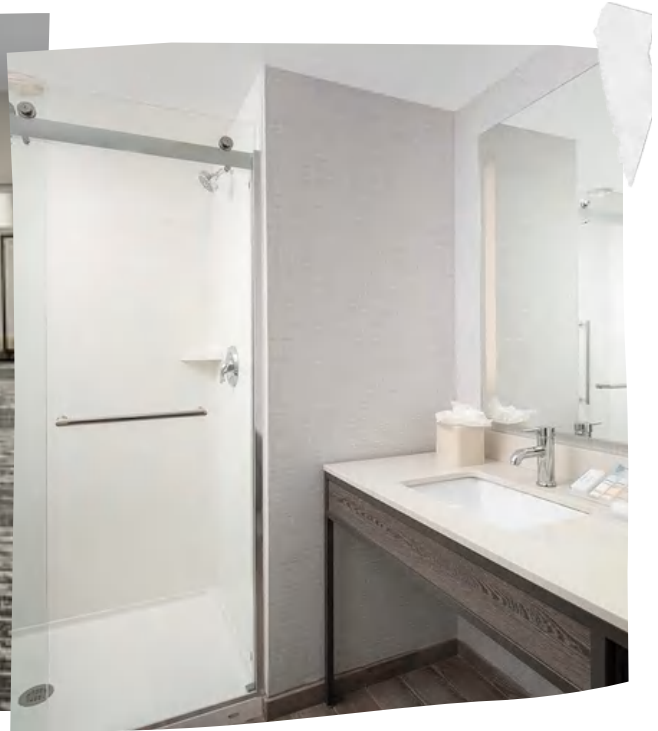
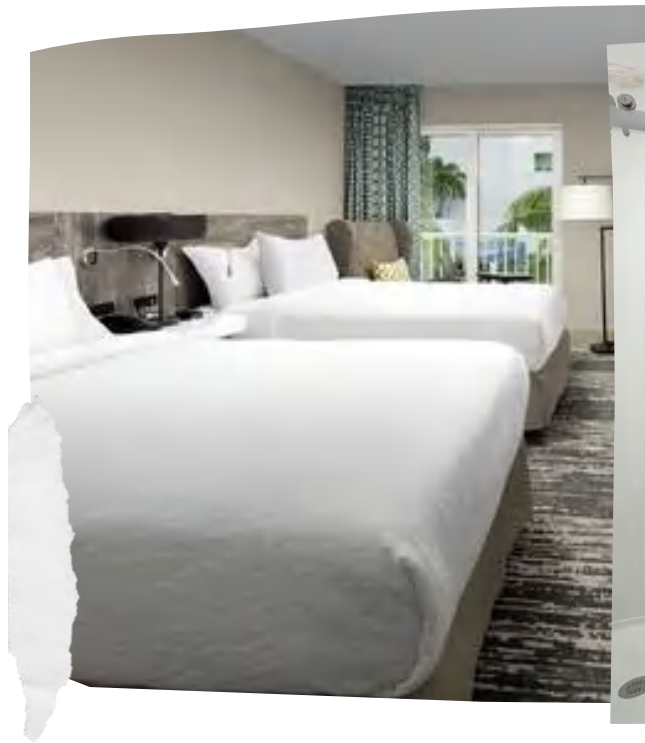
MIAMI RESIDENCE GARDEN INN

For detailed info on our
residence, see our '2024
Student Residence'



MIAMI RESIDENCE **GARDEN INN**

For detailed info on our residence, see our '2024 Student Residence'





HOMESTAY PROGRAM

MIAMI CAMPUS

PROGRAM HIGHLIGHTS

DATES

- July 7, 2024 - July 28, 2024
- August 4, 2024 - August 25, 2024

LENGTH

3 weeks

GROUP SIZE

20 students + 1 free group leader

AGE GROUP

16 + years of age

CAMPUS

Miami Campus

HOMESTAY ACCOMMODATION

Students are placed with host families. Placements are done in "double occupancy", meaning two (2) students, same gender, from the group are placed in the same host family. *Depending on the gender breakdown we reserve the right to place up to three (3) students in the same host family.*

More about our host families

- The great majority of host families speak both, English and Spanish at home.

MEALS

Three meals per days (full-board). On weekdays, host families provide breakfast and dinner. Lunches are provided as per the below information:

- Students are given \$15 per day for daily lunches. *Group leaders are given cash to provide students, students choose from the many restaurant and café options located around the school.*

CLASS SCHEDULE

Monday to Thursday

9:00 AM to 10:45 AM

15 min break

11:00 AM to 12:45 PM

HOMESTAY PROGRAM



MIAMI CAMPUS

AFTERCLASS SCHEDULE

Lunch

12:45 PM to 1:45 PM

Activities

1:45 PM to 6:00 PM

SAMPLE ACTIVITIES CALENDAR

Date	Activity
7/7/24	Arrival and transfer to your Host family
7/8/24	ESL classes and Visit Lincoln Rd
7/9/24	ESL classes and Visit Wynwood Walls & the Design district
7/10/24	ESL classes and Free Afternoon
7/11/24	ESL classes and Visit the Everglades
7/12/24	OHLA LIFE and Visit of the Art Deco District
7/13/24	<i>Free Day</i>
7/14/24	<i>Free Day</i>
7/15/24	ESL classes and Perez Art Museum
7/16/24	ESL classes and Enjoy a movie at CMX
7/17/24	ESL classes and Free Afternoon
7/18/24	ESL classes and Paddle Boarding / Kayaking
7/19/24	OHLA LIFE + Shopping at Dolphin Mall
7/20/24	<i>Free Day</i>
7/21/24	<i>Free Day</i>
7/22/24	ESL classes and Bowling
7/23/24	ESL classes and Spend the Afternoon at Nikki beach
7/24/24	ESL classes and Free Afternoon
7/25/24	ESL classes and enjoy the Bayside Boat tour
7/26/24	OHLA LIFE and Farewell BBQ at Crandon Beach
7/27/24	<i>Free Day</i>
7/28/24	Transfer to the airport and Departure

HOMESTAY PROGRAM

MIAMI CAMPUS



TRANSPORTATION

Airport Transfer

Included to and from Miami International Airport.

Host Families

The journey between the host family and school can be anywhere between 60 to 90 minutes each way. Students and group leaders receive a local transportation pass to go to and from families and school. This pass allows the students an unlimited number of journeys during their stays.

Activities

Included local transportation between activities & school.

TOTAL PROGRAM COST

20 STUDENTS + 1 FREE GROUP LEADER

\$2,975.00 USD per student

Prices quoted are net and non-commissionable. Price and are based on the projected number of paying participants and group leaders. We reserve the right to re-adjust the price based on the actual of students in the program.

ORLANDO TRIP



ADD-ON FOR MIAMI OPTIONS

TWO (2) DAYS IN ORLANDO INCLUDING TRANSPORTATION, ACCOMMODATION AND ENTRANCE TO UNIVERSAL STUDIOS & ISLAND OF ADVENTURE

MEALS

Breakfast and dinner on Saturday & Sunday are included.
Lunch in park is included

ITINERARY

Saturday

- Departure from Miami: 6:00
- Transportation: Chartered Bus/Van
- Length of trip to Orlando: 4 hrs.
- Breakfast on the way
- Park visited on that day: Islands of Adventure from 10:00 to 18:00
- Dinner: From 18:30 to 19:30
- Check in at the hotel: 20:00
- Pool time: Until 22:00

Sunday

- Breakfast: 08:00
- Hotel Check out: 09:00
- Park visited on that day: Universal Studios
- Departure from Orlando: 16:00
- Transportation: Chartered Bus /van
- Length of trip to Miami: 4 hrs.
- Dinner on the way back to Miami
- Arrival in Miami: 20:30

ADD-ON COST

**\$540.00 USD per student
& per group leader**



OHLA SCHOOLS

Celebration Campus

715 BLOOM STREET, SUITE 200
CELEBRATION, FL 34747

1 Located on the second floor of
Downtown Celebration.

2 10 minutes by car from Disney
World

3 11 classrooms and fully
equipped computer lab.

4 The campus sits 150 students

5 Homestay option includes daily
roundtrip transportation to
school provided by the host.

6 Each classroom equipped with
flat screen TV, computers and
full Wi-Fi access.

7 More boutique option for
students looking for a calmer
experience.

8 Free parking onsite

Partner universities nearby: University of Central Florida (UCF), Full Sail University, Valencia College, Florida Institute of Technology (FIT), and Jacksonville University.



PROGRAM HIGHLIGHTS

DATES

- July 7, 2024 - July 20, 2024
- August 4, 2024 - August 17, 2024

LENGTH

2 weeks

GROUP SIZE

- 20 students + 2 free group leaders

AGE GROUP

16 + years of age

CAMPUS

Orlando Campus

RESIDENCE PROGRAM

ORLANDO CAMPUS

RESIDENCE ACCOMMODATION

Students are housed at the Melia Residence. Placements are done in "double occupancy", meaning two (2) students (same gender) from the group are placed per room. Group leader of same gender placed together.

More about the residence:

Centrally located near OHLA Orlando and Walt Disney World.

MEALS

Three meals per days (full-board). Lunches and dinners are provided as per the below information:

- Students are given \$40 per day for daily meals. *Group leaders are given cash to provide students, students choose from the many restaurant and café options located around the school and residence.*

MORNING SCHEDULE

Monday to Thursday

9:00 AM to 12:40 PM

Lunch

12:40 PM to 1:30 PM

RESIDENCE PROGRAM

ORLANDO CAMPUS



AFTERCLASS SCHEDULE

Activities

1:30 PM to 6:30 PM

Optional Full Day Activities

9:00 AM to 7:00 PM

SAMPLE ACTIVITIES CALENDAR

Date	Activity
6/23/24	Arrival and transfer to the Melia residence
6/24/24	ESL classes and Museum of Illusions Orlando
6/25/24	ESL classes and Icon Park
6/26/24	ESL classes and Free Afternoon
6/27/24	ESL classes Andretti Upscale Bowling Lounge
6/28/24	OHLA LIFE and Gatorland
6/29/24	<i>Free day or optional Full day activity - Universal Studio</i>
6/30/24	<i>Free day or optional Full day activity - Island of Adventures</i>
7/1/24	ESL classes and Wonder Works
7/2/24	ESL classes and Escape Room Super Bomb Squad
7/3/24	ESL classes and Free Afternoon
7/4/24	ESL classes and Ripleys' Believe it or Not!
7/5/24	OHLA LIFE and Altitude Trampoline Park
7/6/24	<i>Free day or optional Full day activity Magic Kingdom</i>
7/7/24	Transfer to Airport and departure

RESIDENCE PROGRAM

ORLANDO CAMPUS



TRANSPORTATION

Airport Transfer

Included to and from Orlando International Airport.

Activities

Included local transportation between activities & school.

TOTAL PROGRAM COST

20 STUDENTS + 2 FREE GROUP LEADERS

\$3,295.00 USD per student

Prices quoted are net and non-commissionable. Prices are based on the projected number of paying students and group leaders. We reserve the right to re-adjust the price based on the actual number of students in the program.

OPTIONAL FULL DAY ACTIVITIES - ADD ONS

Two Full day activities - Universal Studio + Island of Adventure

\$250 per paying student and \$0 for the group leaders

One Full day activities - Magic Kingdom

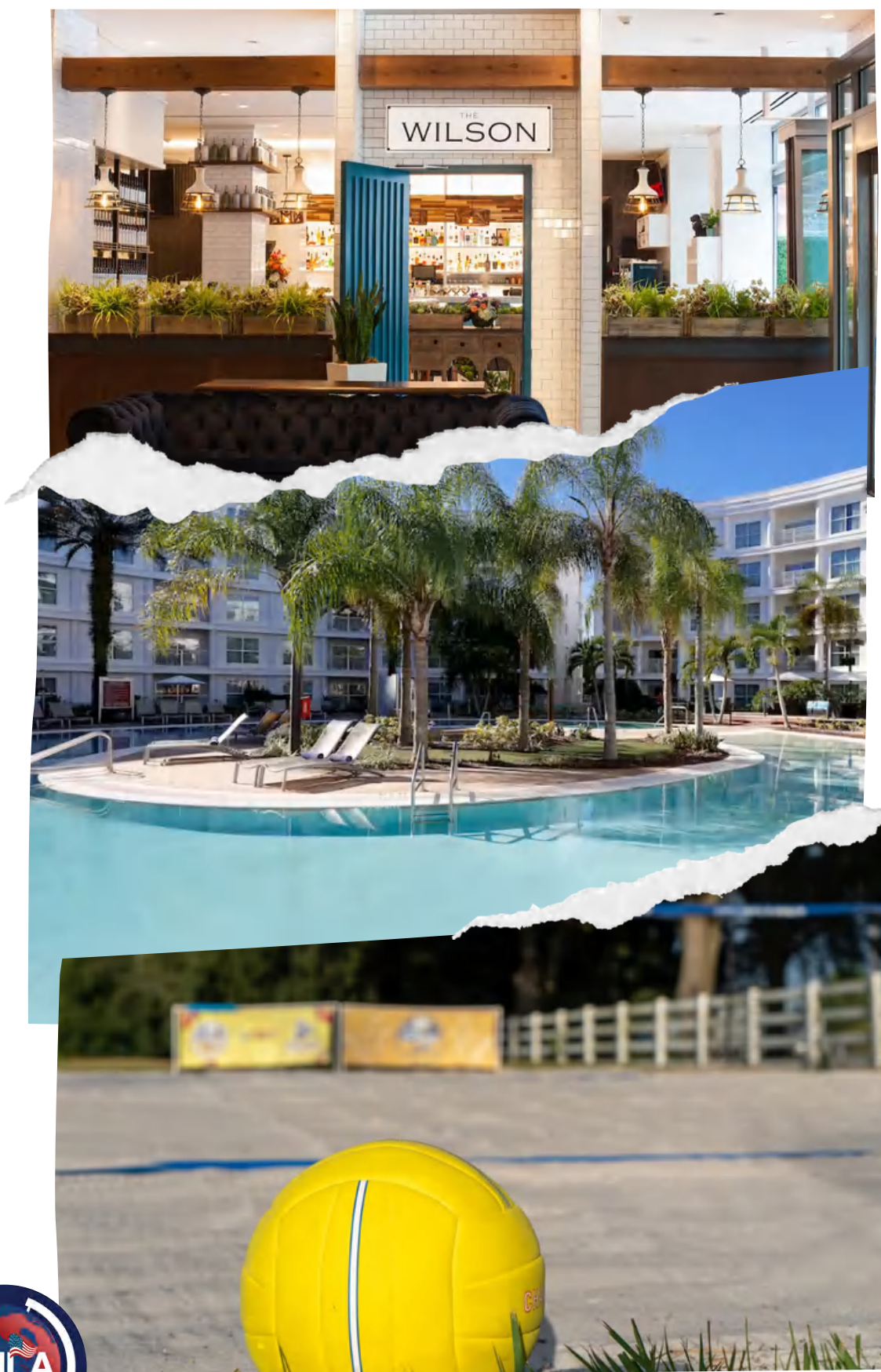
\$170 per paying student and \$0 for the group leaders

ORLANDO RESIDENCE
MELIA



ORLANDO RESIDENCE MELIA

For detailed info on our
residence, see our '2024
Student Residence'



ORLANDO RESIDENCE **MELIA**

For detailed info on our residence, see our '2024 Student Residence'

