



# INTERNATIONAL SUMMER CAMPS



## UK & Ireland 2024

Book at worldwide lowest price at:  
<https://www.languagecourse.net/school-plus-junior-centre-uxbridge-london.php3>

+1 646 503 18 10  
 +31 858880253

+44 330 124 03 17  
 +7 4995000466

+34 93 220 38 75  
 +46 844 68 36 76  
 +81 345 895 399

+33 1-78416974  
 +47 219 30 570  
 +55 213 958 08 76

+41 225 180 700  
 +45 898 83 996  
 +86 19816218990

+49 221 162 56897  
 +39 02-94751194

+43 720116182  
 +48 223 988 072

## PLUS Mission

"For over 50 years, PLUS has provided English language courses to International Students. We work tirelessly so our students can experience British culture, as well as learn and develop in a vibrant, educational and safe environment. With dedicated teachers and leaders, we create a positive, fun and inclusive atmosphere which stretches way beyond the classroom. This is the Plus way."



**Stefano Marra** | Managing Director

## About PLUS

PLUS entered the EFL market back in 1972. Since then, our presence has expanded to include offices in three global hubs: London, New York, and Milan. Today, our group represents one of the world's largest and finest organisations in language teaching.

### Discover our summer programmes

**UK • Ireland • Malta • USA • Canada**

20+ summer centres  
Groups from 50+ countries  
15,000 happy students every year



Accredited by the  
**BRITISH COUNCIL**  
for the teaching  
of English in the UK



[www.plus-ed.com](http://www.plus-ed.com)

Book at worldwide lowest price at:  
<https://www.languagecourse.net/school-plus-junior-centre-uxbridge-london.php3>

+1 646 503 18 10  
 +31 858880253

+44 330 124 03 17  
 +7 4995000466

+34 93 220 38 75  
 +46 844 68 36 76  
 +81 345 895 399

+33 1-78416974  
 +47 219 30 570  
 +55 213 958 08 76

+41 225 180 700  
 +45 898 83 996  
 +86 19816218990

+49 221 162 56897  
 +39 02-94751194

+43 720116182  
 +48 223 988 072

## PLUS packages

Choose yours!

### Our **Classic** packages include

- 1 / 2 / 3 week options
- Online level testing before students' arrival
- 16 English lessons per week (45 mins / lesson)
- PLUS e-book and all supplementary materials provided
- Full board accommodation
- Games and social activities on campus
- Half-day / full-day trips and excursions
- Walking tours and staff leading all excursions
- Entry tickets to attractions
- Transportation for all local and long-distance excursions
- End of course certificates
- Graduation ceremony

Want an even more enriched package of excursions?

### Check our **Premium** packages

of carefully curated attraction bundles designed just for you

Prefer to be far away from London, but visit it anyway?

### Choose one of our **Weekend Away** packages

including 2-4 day stays in London

Want a more personalised programme?

### Explore the **Add-ons** available at each centre

and customise your programme

**Your language journey, your way.**

## UK and Ireland destinations

Summer 2024



Note: Please be aware that some information in this brochure may become outdated as we prepare for Summer 2024. For the latest updates, visit our website, where you'll find the most current details to help plan your perfect summer experience.

[www.plus-ed.com](http://www.plus-ed.com)

## PLUS Team

Our handpicked team members bring a perfect blend of responsibility, care, and fun to our summer camps. They are your reliable go-to for assistance, ensuring a delightful and enriching holiday experience. The PLUS Staff are dedicated to:

- Coordinating and delivering all lessons and activities
- Providing a safe and nurturing atmosphere for every student
- Fostering an inclusive environment and facilitating an international mix
- Bringing the energy and enthusiasm that make every day at camp a new adventure
- Providing all students a summer camp full of wonder and cherished memories

## Special Courses

**Base courses** include 16 x 45 min lessons per week and replace our standard General English course:

- **IELTS:** An introduction to the IELTS exam and Academic Writing
- **Young Manager:** A special course geared towards aspiring young managers

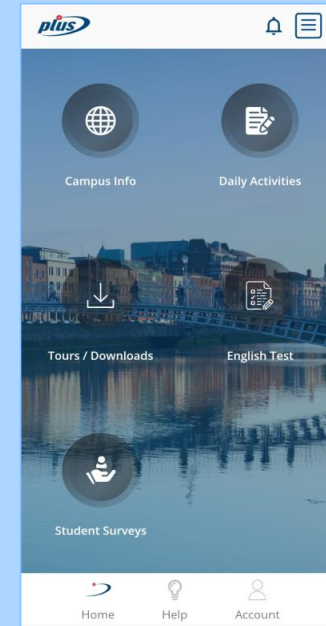
**Supplementary courses** include 3 hours a week and can be booked on top of the base course for additional English tuition.

- **Junior Reporter:** An interactive programme in which students will learn about the various styles of communication used in journalism
- **English via Films:** This unique course incorporates the use of films to enhance English language skills, making learning entertaining and engaging
- **Excursion lessons:** This courses maximises learning opportunities during cultural visits which then are reinforced in the classroom.

[Click on the button below for more](#)

Special Courses

## PLUS App



The PLUS app allows students and group leaders to obtain all essential information related to their stay and excursions. The app features:

- Personalised Group Activity Programme
- Walking tours resources
- PLUS contact details
- Campus information
- Emergency procedures

[www.plus-ed.com](http://www.plus-ed.com)

# Bath 2024

**Location** Royal High School Bath  
**Arrival dates** 4 July • 6 July • 18 July • 20 July  
**Age range** 10 to 17  
**Centre type** Self-contained boarding school  
**Room types** Standard rooms; mostly single and double

## Classic 2 weeks

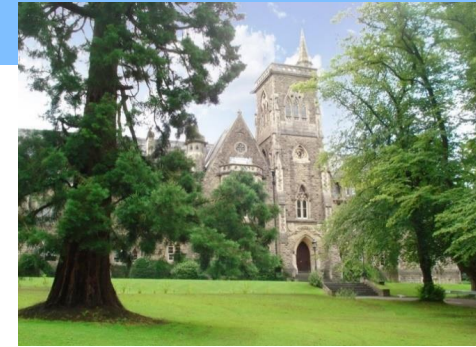
- 1 Full-Day Excursion to Bristol with entry to:  
Bristol Museum • Art Gallery
- 1 Full-Day Excursion to Salisbury
- 2 Full-Day Excursions to two of the following:  
Bournemouth • Cardiff with entry to National Museum • Oxford
- 4 Half-Day Excursions to Bath

## Premium plus weekend away (2 weeks)

- A weekend in London (2 days 2 nights) including 2 Full-Day Excursions with entry to:  
Hop on / hop off boat cruise on the River Thames • London Eye
- 1 Full-Day Excursion to Bristol with entry to:  
Bristol Museum • Art Gallery
  - 1 Full-Day Excursion to Salisbury and Stonehenge (entry ticket included)
  - 2 Full-Day Excursions to two of the following:  
Bournemouth • Cardiff with entry to National Museum Cardiff • Oxford
  - 4 Half-Day Excursions to Bath with entry to:  
Roman Baths

Click on the buttons below for more

Centre overview	Excursion schedule	Add ons	Sample AP
-----------------	--------------------	---------	-----------



[www.plus-ed.com](http://www.plus-ed.com)

# Chelmsford 2024

**Location** Writtle College  
**Arrival dates** 1 July • 15 July • 29 July  
**Age range** 11 to 17  
**Centre type** Self-contained college  
**Room types** Single rooms, standard and ensuite options

## Classic 2 weeks

4 Full-Day Excursions to London with entry to:  
 British Museum  
 2 Full-Day Excursions to two of the following:  
 Oxford • Cambridge • Canterbury  
 Add Academy - 4 Full Afternoon Sessions of professional sports coaching

## Premium 2 weeks

4 Full-Day Excursions to London with entry to:  
 British Museum • Hop on / hop off bus tour •  
 Madame Tussauds • Hop on / hop off boat cruise •  
 London Eye • HMS Belfast - UK's most famous battleship  
 2 Full-Day Excursions to two of the following:  
 Oxford with entry to Oxford Castle & Prison •  
 Cambridge with punting on River Cam •  
 Canterbury with entry ticket to Canterbury Cathedral  
 Add Academy - 4 Full Afternoon Sessions of professional sports coaching

Click on the buttons below for more

Centre overview    Excursion schedule    Add ons    Sample AP



[www.plus-ed.com](http://www.plus-ed.com)

Book at worldwide lowest price at:  
<https://www.languagecourse.net/school-plus-junior-centre-uxbridge-london.php3>

- +1 646 503 18 10
- +44 330 124 03 17
- +34 93 220 38 75
- +33 1-78416974
- +41 225 180 700
- +49 221 162 56897
- +43 720116182
- +31 858880253
- +7 4995000466
- +46 844 68 36 76
- +47 219 30 570
- +45 898 83 996
- +39 02-94751194
- +48 223 988 072
- +61 345 895 399
- +55 213 958 08 76
- +86 19816218990

# Edinburgh 2024

**Location** Pollock Halls (University of Edinburgh)  
**Arrival dates** 2 July • 16 July  
**Age range** 12 to 17  
**Centre type** City campus  
**Room types** Single and twin ensuite rooms

## Classic 2 weeks

4 Full-Day visits to Edinburgh with entry to:  
 National Gallery • Museum of Edinburgh  
 4 Full-Day Excursions to four of the following  
 St. Andrews and Glamis Castle (Glamis Castle entry included) •  
 Glasgow • Stirling • North Berwick •  
 Loch Lomond • Berwick-upon-Thames

## Premium 2 weeks

4 Full-Day visits to Edinburgh with entry to:  
 National Gallery • Museum of Edinburgh •  
 Edinburgh Castle • Palace of Holyroodhouse •  
 Edinburgh Dungeon • Camera Obscura World of Illusions  
 4 Full-Day Excursions to four of the following  
 St. Andrews and Glamis Castle (Glamis Castle entry included) •  
 Glasgow • Stirling • North Berwick •  
 Loch Lomond • Berwick-upon-Thames

Click on the buttons below for more

Centre overview    Excursion schedule    Add ons    Sample AP



[www.plus-ed.com](http://www.plus-ed.com)

Book at worldwide lowest price at:  
<https://www.languagecourse.net/school-plus-junior-centre-uxbridge-london.php3>

- +1 646 503 18 10
- +44 330 124 03 17
- +34 93 220 38 75
- +33 1-78416974
- +41 225 180 700
- +49 221 162 56897
- +43 720116182
- +31 858880253
- +7 4995000466
- +46 844 68 36 76
- +47 219 30 570
- +45 898 83 996
- +39 02-94751194
- +48 223 988 072
- +81 345 895 399
- +55 213 958 08 76
- +86 19816218990

# Ellesmere 2024

**Location** Ellesmere College  
**Arrival dates** 6 July • 9 July • 19 July • 23 July • 2 August  
**Age range** 10 to 17  
**Centre type** Self-contained boarding school  
**Room types** Singles and twin rooms; standard and ensuite options



## Classic 2 weeks

- 1 Full Day Excursion to Liverpool and Wirral Peninsula
- 1 Full Day Excursion to Wales
- 1 Full Day Excursion to Chester
- 1 Full Day Excursion to Shrewsbury

## Premium plus weekend away (2 weeks)

A weekend in London (4 days 4 nights) including 4 Full-Day excursions with entry to:

- London Eye • Hop on / hop off boat cruise •
- Hop on / hop off boat cruise on the River Thames •
- Madame Tussauds • HMS Belfast - UK's most famous battleship

A Full-Day Excursion to Wales with entry to:

- Caernarfon Castle

A Full-Day Excursion to Liverpool and Wirral Peninsula



Click on the buttons below for more

Centre overview    Excursion schedule    Add ons    Sample AP

[www.plus-ed.com](http://www.plus-ed.com)

Book at worldwide lowest price at: <https://www.languagecourse.net/school-plus-junior-centre-uxbridge-london.php3>

- |                  |                   |                   |                 |                 |                   |                 |
|------------------|-------------------|-------------------|-----------------|-----------------|-------------------|-----------------|
| +1 646 503 18 10 | +44 330 124 03 17 | +34 93 220 38 75  | +33 1-78416974  | +41 225 180 700 | +49 221 162 56897 | +43 720116182   |
| +31 858880253    | +7 4995000466     | +46 844 68 36 76  | +47 219 30 570  | +45 898 83 996  | +39 02-94751194   | +48 223 988 072 |
|                  | +81 345 895 399   | +55 213 958 08 76 | +86 19816218990 |                 |                   |                 |



# London Central 2024

**Location** Ramsay Hall (University College London)  
**Arrival dates** 1 July • 15 July • 29 July  
**Age range** 12-17 years old  
**Centre type** City campus  
**Room types** Single standard rooms

## Classic 2 weeks

6 Full-Day Excursions to London with entry to:  
 National Gallery • British Museum • Science Museum  
 2 Full-Day Excursions to two of the following:  
 Oxford • Cambridge • Brighton

## Premium 2 weeks

6 Full-Day Excursions to London with entry to:  
 National Gallery • British Museum • Science Museum • Hop on / hop off bus tour •  
 London Eye • Hop on / hop off boat cruise • Madame Tussauds •  
 HMS Belfast - UK's most famous battleship  
 2 Full-Day Excursions to two of the following:  
 Oxford • Cambridge • Brighton with entry to British Airways i360 viewing pod

## Adventure 2 weeks

8 Full-Day Excursions to London with entry to:  
 National Gallery • British Museum • Science Museum • Hop on / hop off bus tour •  
 London Eye • Hop on / hop off boat cruise • Madame Tussauds •  
 HMS Belfast - UK's most famous battleship • London Dungeons

Click on the buttons below for more

Centre overview	Excursion schedule	Add ons	Sample AP
-----------------	--------------------	---------	-----------



[www.plus-ed.com](http://www.plus-ed.com)

Book at worldwide lowest price at:  
<https://www.languagecourse.net/school-plus-junior-centre-uxbridge-london.php3>

- |                  |                   |                  |                   |                 |                   |                 |
|------------------|-------------------|------------------|-------------------|-----------------|-------------------|-----------------|
| +1 646 503 18 10 | +44 330 124 03 17 | +34 93 220 38 75 | +33 1-78416974    | +41 225 180 700 | +49 221 162 56897 | +43 720116182   |
| +31 858880253    | +7 4995000466     | +46 844 68 36 76 | +47 219 30 570    | +45 898 83 996  | +39 02-94751194   | +48 223 988 072 |
|                  |                   | +81 345 895 399  | +55 213 958 08 76 | +86 19816218990 |                   |                 |

# London Epsom 2024

**Location** Epsom College  
**Arrival dates** 2 July • 16 July • 30 July  
**Age range** 10 to 17  
**Centre type** Self-contained boarding school  
**Room types** Single, twin, and triple standard rooms

## Classic 2 weeks

6 Full-Day Excursions to London with entry to:  
 National Gallery • British Museum • Science Museum  
 2 Full-Day Excursions to two of the following:  
 Oxford • Cambridge • Brighton

## Premium 2 weeks

6 Full-Day Excursions to London with entry to:  
 National Gallery • British Museum • Science Museum • Hop on / hop off bus tour •  
 London Eye • Hop on / hop off boat cruise • Madame Tussauds •  
 HMS Belfast - UK's most famous battleship  
 2 Full-Day Excursions to two of the following:  
 Oxford • Cambridge • Brighton with entry to British Airways i360 viewing pod

## Adventure 2 weeks

8 Full-Day Excursions to London with entry to:  
 National Gallery • British Museum • Science Museum • Hop on / hop off bus tour •  
 London Eye • Hop on / hop off boat cruise • Madame Tussauds •  
 HMS Belfast - UK's most famous battleship • London Dungeons

Click on the buttons below for more

<a href="#">Centre overview</a>	<a href="#">Excursion schedule</a>	<a href="#">Add ons</a>	<a href="#">Sample AP</a>
---------------------------------	------------------------------------	-------------------------	---------------------------



[www.plus-ed.com](http://www.plus-ed.com)

Book at worldwide lowest price at:  
<https://www.languagecourse.net/school-plus-junior-centre-uxbridge-london.php3>

+1 646 503 18 10	+44 330 124 03 17	+34 93 220 38 75	+33 1-78416974	+41 225 180 700	+49 221 162 56897	+43 720116182
+31 858880253	+7 4995000466	+46 844 68 36 76	+47 219 30 570	+45 898 83 996	+39 02-94751194	+48 223 988 072
	+81 345 895 399	+55 213 958 08 76	+86 19816218990			

# London Hatfield 2024

**Location** De Havilland Campus (University of Hertfordshire)  
**Arrival dates** 1 July • 15 July  
**Age range** 10 to 17  
**Centre type** Self-contained university campus  
**Room types** Single ensuite rooms

## Classic 2 weeks

2 Full-Day Excursions to London with entry to:  
 The National Gallery • The British Museum  
 2 Full-Day Excursions to two of the following:  
 Cambridge • Oxford • Brighton  
 2 Half-Day Excursions to St Albans with entry to:  
 St Albans Museum + Gallery  
 2 Half-Day Excursions to Hatfield with entry to:  
 Hatfield Park

## Premium 2 weeks

4 Full-Day Excursions to London with entry to:  
 The National Gallery • The British Museum •  
 Hop on / hop off bus tour • Tower of London •  
 Hop on / hop off boat cruise • A Musical in London  
 2 Full-Day Excursions to two of the following:  
 Cambridge • Oxford • Brighton with entry to British Airways i360 viewing pod  
 1 Half-Day Excursion to St Albans  
 1 Half-Day Excursions to Hatfield

Click on the buttons below for more

Centre overview    Excursion schedule    Add ons    Sample AP



[www.plus-ed.com](http://www.plus-ed.com)

Book at worldwide lowest price at:  
<https://www.languagecourse.net/school-plus-junior-centre-uxbridge-london.php3>

- |                  |                   |                  |                   |                 |                   |                 |
|------------------|-------------------|------------------|-------------------|-----------------|-------------------|-----------------|
| +1 646 503 18 10 | +44 330 124 03 17 | +34 93 220 38 75 | +33 1-78416974    | +41 225 180 700 | +49 221 162 56897 | +43 720116182   |
| +31 858880253    | +7 4995000466     | +46 844 68 36 76 | +47 219 30 570    | +45 898 83 996  | +39 02-94751194   | +48 223 988 072 |
|                  |                   | +81 345 895 399  | +55 213 958 08 76 | +86 19816218990 |                   |                 |

# London Kingston 2024

**Location** Kingston Hill Campus (Kingston University)  
**Arrival dates** 3 July • 10 July • 17 July • 24 July • 31 July  
**Age range** 12 to 17  
**Centre type** Self-contained university campus  
**Room types** Single en-suite rooms

## Classic 2 weeks

6 Full-Day Excursions to London with entry to:  
 National Gallery • British Museum • Science Museum  
 2 Full-Day Excursions to two of the following:  
 Oxford • Cambridge • Brighton

## Premium 2 weeks

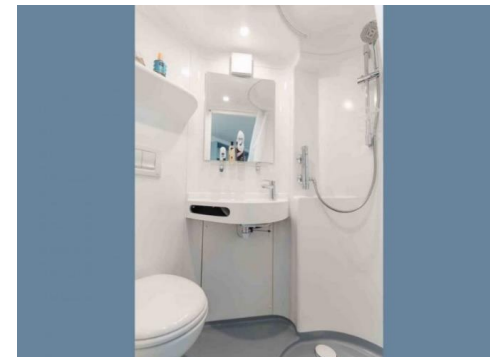
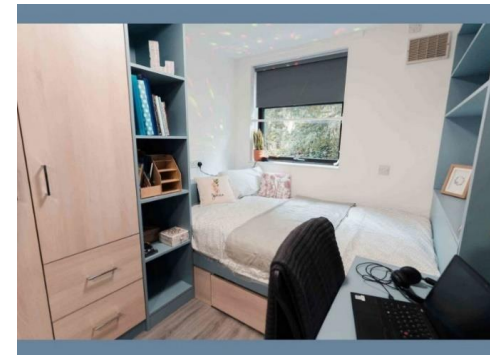
6 Full-Day Excursions to London with entry to:  
 National Gallery • British Museum • Science Museum • Hop on / hop off bus tour •  
 London Eye • Hop on / hop off boat cruise • Madame Tussauds •  
 HMS Belfast - UK's most famous battleship  
 2 Full-Day Excursions to two of the following:  
 Oxford • Cambridge • Brighton with entry to British Airways i360 viewing pod

## Adventure 2 weeks

8 Full-Day Excursions to London with entry to:  
 National Gallery • British Museum • Science Museum • Hop on / hop off bus tour •  
 London Eye • Hop on / hop off boat cruise • Madame Tussauds •  
 HMS Belfast - UK's most famous battleship • London Dungeons

Click on the buttons below for more

Centre overview    Excursion schedule    Add ons    Sample AP



[www.plus-ed.com](http://www.plus-ed.com)

Book at worldwide lowest price at:  
<https://www.languagecourse.net/school-plus-junior-centre-uxbridge-london.php3>

- 🇺🇸 +1 646 503 18 10
- 🇬🇧 +44 330 124 03 17
- 🇪🇸 +34 93 220 38 75
- 🇫🇷 +33 1-78416974
- 🇨🇭 +41 225 180 700
- 🇩🇪 +49 221 162 56897
- 🇨🇦 +43 720116182
- 🇮🇹 +31 858880253
- 🇮🇪 +7 4995000466
- 🇩🇪 +46 844 68 36 76
- 🇩🇪 +47 219 30 570
- 🇩🇪 +45 898 83 996
- 🇮🇹 +39 02-94751194
- 🇮🇹 +48 223 988 072
- 🇨🇳 +81 345 895 399
- 🇨🇳 +55 213 958 08 76
- 🇨🇳 +86 19816218990

# London Uxbridge 2024

**Location** Brunel University  
**Arrival dates** 18 June • 2 July • 16 July • 23 July • 30 July • 6 August  
**Age range** 10 to 17  
**Centre type** Large, closed university campus  
**Room types** Single rooms; ensuite and standard options

## Classic 2 weeks

6 Full-Day Excursions to London with entry to:  
 National Gallery • British Museum • Science Museum  
 2 Full-Day Excursions to two of the following:  
 Oxford • Cambridge • Brighton

## Premium 2 weeks

6 Full-Day Excursions to London with entry to:  
 National Gallery • British Museum • Science Museum • Hop on / hop off bus tour •  
 London Eye • Hop on / hop off boat cruise • Madame Tussauds •  
 HMS Belfast - UK's most famous battleship  
 2 Full-Day Excursions to two of the following:  
 Oxford • Cambridge • Brighton with entry to British Airways i360 viewing pod

## Adventure 2 weeks

8 Full-Day Excursions to London with entry to:  
 National Gallery • British Museum • Science Museum • Hop on / hop off bus tour •  
 London Eye • Hop on / hop off boat cruise • Madame Tussauds •  
 HMS Belfast - UK's most famous battleship • London Dungeons

Click on the buttons below for more

Centre overview	Excursion schedule	Add ons	Sample AP
-----------------	--------------------	---------	-----------



[www.plus-ed.com](http://www.plus-ed.com)

Book at worldwide lowest price at:  
<https://www.languagecourse.net/school-plus-junior-centre-uxbridge-london.php3>

- |                  |                   |                  |                   |                 |                   |                 |
|------------------|-------------------|------------------|-------------------|-----------------|-------------------|-----------------|
| +1 646 503 18 10 | +44 330 124 03 17 | +34 93 220 38 75 | +33 1-78416974    | +41 225 180 700 | +49 221 162 56897 | +43 720116182   |
| +31 858880253    | +7 4995000466     | +46 844 68 36 76 | +47 219 30 570    | +45 898 83 996  | +39 02-94751194   | +48 223 988 072 |
|                  |                   | +81 345 895 399  | +55 213 958 08 76 | +86 19816218990 |                   |                 |

# Loughborough 2024

**Location** Loughborough University  
**Arrival dates** 14 July • 16 July • 28 July • 30 July  
**Age range** 12 to 17  
**Centre type** Large, closed campus with free shuttle  
**Room types** Single ensuite rooms

## Classic 2 weeks

- 1 Full-Day Excursion to York
- 1 Full-Day Excursion to Cambridge
- 1 Full-Day Excursion to Nottingham
- 1 Full-Day Excursion to the Peak District
- 2 Half-Day Excursions to Loughborough

## Premium plus weekend away (2 weeks)

- A weekend in London (3 days 2 nights) with entry to:
- London Dungeons • Madame Tussauds
  - 1 Full-Day Excursion to York with entry to:
    - York Castle Museum
  - 1 Full-Day Excursion to Cambridge including:
    - Punting on River Cam
  - 1 Full-Day Excursion to Nottingham with entry to:
    - National Justice Museum
  - 2 Half-Day Excursions to Loughborough

Click on the buttons below for more

Centre overview	Excursion schedule	Add ons	Sample AP
-----------------	--------------------	---------	-----------



[www.plus-ed.com](http://www.plus-ed.com)

Book at worldwide lowest price at: <https://www.languagecourse.net/school-plus-junior-centre-uxbridge-london.php3>

- |                  |                   |                  |                   |                 |                   |                 |
|------------------|-------------------|------------------|-------------------|-----------------|-------------------|-----------------|
| +1 646 503 18 10 | +44 330 124 03 17 | +34 93 220 38 75 | +33 1-78416974    | +41 225 180 700 | +49 221 162 56897 | +43 720116182   |
| +31 858880253    | +7 4995000466     | +46 844 68 36 76 | +47 219 30 570    | +45 898 83 996  | +39 02-94751194   | +48 223 988 072 |
|                  |                   | +81 345 895 399  | +55 213 958 08 76 | +86 19816218990 |                   |                 |

# Stirling 2024

**Location** Stirling University  
**Arrival dates** 1 July • 15 July  
**Age range** 11 to 17  
**Centre type** Large, closed campus  
**Room types** Single standard rooms

## Classic 2 weeks

2 Full-Day Excursions to Edinburgh  
 2 Full-Day Excursions to two of the following:  
     St Andrews • Glasgow • Loch Lomond  
 3 Half-Day Visits to Stirling  
 1 Half-Day Excursion to Bannockburn

## Premium 2 weeks

2 Full-Day Excursions to Edinburgh with entry to:  
     Edinburgh Castle • Edinburgh Dungeon  
 2 Full-Day Excursions to two of the following:  
     St Andrews • Glasgow • Loch Lomond  
 3 Half-Day Visits to Stirling with entry to:  
     Stirling Old Town Jail  
 1 Half-Day Excursion to Bannockburn

Click on the buttons below for more

[Centre overview](#)
[Excursion schedule](#)
[Add ons](#)
[Sample AP](#)



[www.plus-ed.com](http://www.plus-ed.com)

Book at worldwide lowest price at:  
<https://www.languagecourse.net/school-plus-junior-centre-uxbridge-london.php3>

- +1 646 503 18 10
- +44 330 124 03 17
- +34 93 220 38 75
- +33 1-78416974
- +41 225 180 700
- +49 221 162 56897
- +43 720116182
- +31 858880253
- +7 4995000466
- +46 844 68 36 76
- +47 219 30 570
- +45 898 83 996
- +39 02-94751194
- +48 223 988 072
- +81 345 895 399
- +55 213 958 08 76
- +86 19816218990

# Dublin 2024

**Location** University College Dublin  
**Arrival dates** 22 June • 2 July • 16 July • 30 July  
**Age range** 10 to 17  
**Centre type** Large, closed campus  
**Room types** Single standard rooms

## Classic 2 weeks

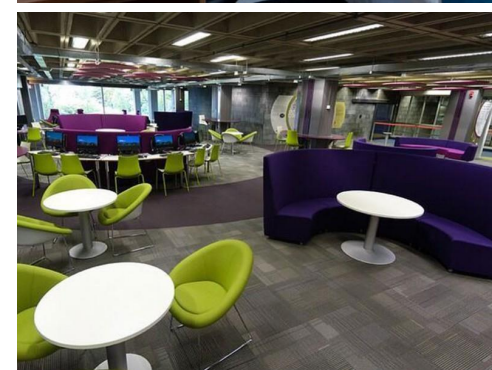
4 Full-Day Excursions to Dublin with entry to:  
 Archaeology Museum or National Gallery • Phoenix Park and Deer Reserve  
 4 Full-Day Excursions to four of the following:  
 Kilkenny with entry to Kilkenny Castle • Birr with entry to Birr Park •  
 Howth and Malahide • Glendalough •  
 Powerscourt Gardens and Bray • Boyne Valley with entry to Newgrange

## Premium 2 weeks

4 Full-Day Excursions to Dublin with entry to:  
 Archaeology Museum or National Gallery • Phoenix Park and Deer Reserve •  
 Dublin Zoo • Book of Kells • Dublin Castle • Leprechaun Museum  
 4 Full-Day Excursions to four of the following:  
 Kilkenny with entry to Kilkenny Castle and guided tour •  
 Birr with entry to Birr Park • Howth and Malahide • Glendalough •  
 Powerscourt Gardens and Bray • Boyne Valley with entry to Newgrange

Click on the buttons below for more

Centre overview	Excursion schedule	Add ons	Sample AP
-----------------	--------------------	---------	-----------



[www.plus-ed.com](http://www.plus-ed.com)