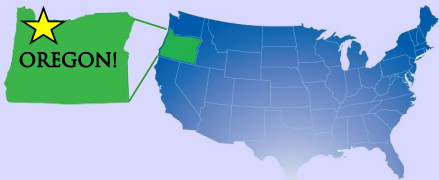




PORTLAND ENGLISH LANGUAGE ACADEMY



Portland, Oregon USA



www.PortlandEnglish.edu

LanguageCourse.net

Book at worldwide lowest price at:

<https://www.languagecourse.net/school-portland-english-language-academy-portland.php3>

+1 646 503 18 10
 +31 858880253

+44 330 124 03 17
 +7 4995000466

+34 93 220 38 75
 +46 844 68 36 76
 +81 345 895 399

+33 1-78416974
 +47 219 30 570
 +55 213 958 08 76

+41 225 180 700
 +45 898 83 996
 +86 19816218990

+49 221 162 56897
 +39 02-94751194

+43 720116182
 +48 223 988 072

WHY PORTLAND?



People in Portland are very nice and open-minded. It was easy to go out and meet new people. I enjoyed trying new ethnic restaurants and playing pool and other games at bars. Every week I could go to a music concert. It was so affordable!

—Tiziana, Switzerland

Live more, pay less.

It costs less to live, play and study in Portland, because **Oregon has no sales tax!**

Compare Portland to other cities at www.numbeo.com

AMAZING FOOD, DRINK & ENTERTAINMENT



over 100 breweries & 30 wineries



over 500 unique Food Carts

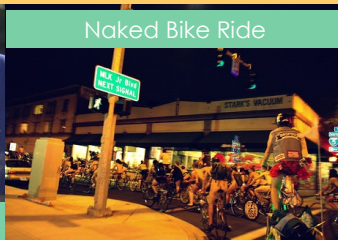


Culture Festivals & Street Markets

UNIQUE FESTIVALS, CONTESTS & EVENTS



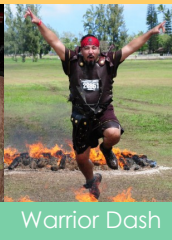
2 Sand Castle Contest



Naked Bike Ride



Zombie Walk



Warrior Dash



Christmas Festival of Light

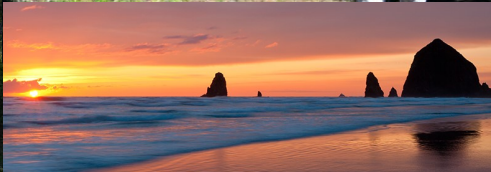


WHY OREGON?



When I was in Oregon I did a lot of hikes in many different and beautiful places! I enjoyed getting to know Portlanders, too. Because of where Portland is located, it was easy to take trips to other cities on the West Coast, as well as the Olympic Peninsula, Multnomah Falls, and Crater Lake.
—Judith, Spain

OUTDOOR ADVENTURES EVERY SEASON



A variety of natural wonders.

Oregon has the most diverse climate of any state in the U.S. Enjoy hiking, camping, cycling, or rafting as you explore a region of amazing nature!



LanguageCourse.net Book at worldwide lowest price at: <https://www.languagecourse.net/school-portland-english-language-academy-portland.php3>

- 🇺🇸 +1 646 503 18 10
- 🇬🇧 +44 330 124 03 17
- 🇪🇸 +34 93 220 38 75
- 🇫🇷 +33 1-78416974
- 🇨🇭 +41 225 180 700
- 🇩🇪 +49 221 162 56897
- 🇩🇪 +43 720116182
- 🇩🇪 +31 858880253
- 🇫🇷 +7 4995000466
- 🇸🇪 +46 844 68 36 76
- 🇳🇴 +47 219 30 570
- 🇩🇪 +45 898 83 996
- 🇮🇹 +39 02-94751194
- 🇩🇪 +48 223 988 072
- 🇨🇦 +81 345 895 399
- 🇧🇷 +55 213 958 08 76
- 🇨🇦 +86 19816218990



PORTLAND ENGLISH LANGUAGE ACADEMY

Study better, pay less.

Tuition **as low as \$875** for 4 weeks
5% tuition discount if you pay for 2 terms at one time

PELA OFFERS MORE

- **Small class sizes** (8 to 15 students)
- **7 levels of classes**, "beginner" to "advanced"
- **College & test preparation**
- **4-week terms** every month
- **F-1 & non F-1** programs



CAMPUS AMENITIES

- **Free tutoring sessions** with teachers
- **Conversation groups** every day

- Computer Lab
- Study Lab
- Private Study Rooms
- Free Wi-Fi
- Free Parking
- Student Lounge & Kitchenette
- 500+ Movie & TV Show Library



HOUSING PLACEMENT OPTIONS

HOMESTAY

Live with a real American family

- A private bedroom
- Breakfast and dinner every day
- Participate in family activities
- Learn about American family culture

NOTE: Some homestays host more than one student

STUDENT HOUSE

Share a house with other students

- A private bedroom
- Full kitchen to prepare your meals
- Participate in Student House activities and sight-seeing

NOTE: Meals are not provided by the Student House



LanguageCourse.net Book at worldwide lowest price at:
<https://www.languagecourse.net/school-portland-english-language-academy-portland.php3>

🇺🇸 +1 646 503 18 10
🇺🇸 +31 858880253

🇬🇧 +44 330 124 03 17
🇬🇧 +7 4995000466

🇪🇸 +34 93 220 38 75
🇪🇸 +46 844 68 36 76
🇪🇸 +81 345 895 399

🇫🇷 +33 1-78416974
🇫🇷 +47 219 30 570
🇫🇷 +55 213 958 08 76

🇨🇭 +41 225 180 700
🇨🇭 +45 898 83 996
🇨🇭 +86 19816218990

🇩🇪 +49 221 162 56897
🇩🇪 +39 02-94751194

🇯🇵 +43 720116182
🇯🇵 +48 223 988 072

SCHOOL ACTIVITIES EVERY MONTH

Every month, PELA organizes activities for students. Below are some recent activities!

JANUARY

Bowling Night
Miniature Golf Party

FEBRUARY

Laser Tag Party
Winterhawks' Hockey Game

MARCH

St. Patrick's Day Pub Crawl
Ping pong & Pool Party



JULY

Beach Trip
PELA BBQ

AUGUST

Waterfront Park Beer Festival
Board Game Night

SEPTEMBER

Corn Maze Trip
Timbers' Soccer Game



APRIL

Tulip Festival & Shopping
Mt. Hood Adventure Camp

MAY

Prom Dance
Cinco de Mayo Festival

JUNE

Trip to Oregon Zoo
Casino Night



OCTOBER

Halloween Costume Contest
Haunted House Tour

NOVEMBER

Holiday Ale Festival
Thanksgiving Lunch

DECEMBER

Christmas Party
Peacock Lane Walking

COLLEGE PARTNERS & CONDITIONAL ADMISSIONS



WHAT IS "CONDITIONAL ADMISSIONS"?

Conditional Admissions to a university means you can enter that university with a lower TOEFL or IELTS score.

Some schools don't require a TOEFL or IELTS score for PELA students!

Each university may have different requirements for conditional admissions. Requirements usually include:

- Finish PELA's highest level (**Level 6**) with a grade of B (**3.0 / 80%**).
- **Undergraduate Programs:**
TOEFL Score: 60
IELTS Score: 5.0
No SAT, GRE or GMAT needed
- **Graduate Programs:**
TOEFL Score: 65
IELTS Score: 5.5
Pass GRE/GMAT by end of first year

Book at worldwide lowest price at:

<https://www.languagecourse.net/school-portland-english-language-academy-portland.php3>

+1 646 503 18 10
 +31 858880253

+44 330 124 03 17
 +7 4995000466

+34 93 220 38 75
 +46 844 68 36 76
 +81 345 895 399

+33 1-78416974
 +47 219 30 570
 +55 213 958 08 76

+41 225 180 700
 +45 898 83 996
 +86 19816218990

+49 221 162 56897
 +39 02-94751194

+43 720116182
 +48 223 988 072

CHOOSE AN ENGLISH PROGRAM



English programs to help you reach your goals, at times convenient for you.

Each program term is 4-weeks long. You can change your program every term.

INTENSIVE ENGLISH

20 Class hours per week

Monday	Listening & Speaking	Writing & Grammar	Integrated Skills
Tuesday	Reading, Vocabulary & Pronunciation		Grammar for Communication
Wednesday	Listening & Speaking	Writing & Grammar	Integrated Skills
Thursday	Reading, Vocabulary & Pronunciation		Grammar for Communication
Friday	Listening & Speaking	Writing & Grammar	Integrated Skills

Available to students with an F-1 (student) visa

SEMI-INTENSIVE ENGLISH

17 Class hours per week

Monday	Listening & Speaking		Integrated Skills
Tuesday	Reading, Vocabulary & Pronunciation		Grammar for Communication
Wednesday	Listening & Speaking		Integrated Skills
Thursday	Reading, Vocabulary & Pronunciation		Grammar for Communication
Friday	Listening & Speaking		Integrated Skills

Available to students without an F-1 (student) visa

INTENSIVE IELTS

20 English Skills Building class hours per week

5 IELTS Test Preparation class hours per week

Monday	Vocabulary & Spelling	Speaking & Pronunciation	
Tuesday	Listening & Reading	Logical Reasoning	IELTS Test Preparation
Wednesday	Listening & Reading	Graph Analysis	
Thursday	Listening & Reading	Logical Reasoning	IELTS Test Preparation
Friday	Listening & Reading	Essay Writing	

Available to students with an F-1 (student) visa

ACADEMIC ENGLISH

20 Class hours per week

Monday	Reading, Vocabulary & Speaking	Writing & Grammar
Tuesday	Reading, Vocabulary & Speaking	Writing & Grammar
Wednesday	Reading, Vocabulary & Speaking	Writing & Grammar
Thursday	Reading, Vocabulary & Speaking	Writing & Grammar
Friday	Reading, Vocabulary & Speaking	Writing & Grammar

Available to students with an F-1 (student) visa



If you don't raise your IELTS score by **1 point** after 3 months of Intensive IELTS, PELA will pay for your IELTS test!

CLASSES THAT FIT YOUR ABILITIES!

Students are placed in different class levels **according to their ability in each skill.**

EXAMPLE: You can have a **Level 5 Reading** class and a **Level 4 Speaking** class.

HOW FAST CAN YOU IMPROVE?

Students usually spend **2-3 months** at each class level.

Advance faster by taking a **"Level-Up" Test** at the end of each term.

6

LanguageCourse.net Book at worldwide lowest price at:

<https://www.languagecourse.net/school-portland-english-language-academy-portland.php3>

+1 646 503 18 10

+44 330 124 03 17

+34 93 220 38 75

+33 1-78416974

+41 225 180 700

+49 221 162 56897

+43 720116182

+31 858880253

+7 4995000466

+46 844 68 36 76

+47 219 30 570

+45 898 83 996

+39 02-94751194

+48 223 988 072

+81 345 895 399

+55 213 958 08 76

+86 19816218990

ADD EXTRA CLASSES TO ANY PROGRAM

Each class session is 4-weeks long

+ TOEFL IBT PREPARATION

+5 Class hours per week

Improve your TOEFL score by 10 points... 15 points...or more!



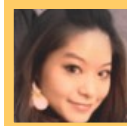
My TOEFL teacher taught us many methods which were easy to understand. He is the best teacher that I ever took TOEFL classes with.

- Hiroko, Japan

+ IELTS PREPARATION

+5 Class hours per week

Improve your IELTS score by 0.5 points... 1.0 points...or more!



The IELTS teacher is brilliant! He teaches in the way that makes the students believe in themselves and their skills. He is very motivating!

- Kuo, Taiwan

+ TOEIC PREPARATION

+5 Class hours per week

Improve your TOEIC score by 50 points... 100 points...or more!



I love everything about my TOEIC class! The small class size is perfect, and I like the balance of individual practice and group work.

- Nayyaf, Saudi Arabia

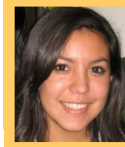
+ VOLUNTEERING

+2-4 hours of Volunteering

+1 hour Volunteering & Culture Class

Volunteer at various locations and organizations around Portland. New volunteer opportunities are added every month!

Students will gain experience with American lifestyles and daily culture as they practice their English in a variety of different settings.



To volunteer in the International School and help people to learn Spanish was fun. I felt very comfortable because I could learn and practice English at the same time I could teach them Spanish.

—Rebecca, Spain

TAKE THE IELTS TEST AT PELA!

IELTS™

Official Test Centre

The Portland English Language Academy is an IELTS Test Center. Tests are given 4 times every month.

TAKE THE TOEIC TEST AT PELA!

TOEIC®
TEST OF ENGLISH FOR INTERNATIONAL COMMUNICATION

The Portland English Language Academy is also a TOEIC Test Center. Tests are given once every month.

TUTORING CENTER

4 days a week, meet with our PELA teachers to get extra help with difficult grammar or homework.



CONVERSATION GROUPS

5 days a week, join our conversation groups! Talk with Americans about topics you are interested in, and practice your English.



LanguageCourse.net

Book at worldwide lowest price at:

<https://www.languagecourse.net/school-portland-english-language-academy-portland.php3>

+1 646 503 18 10

+44 330 124 03 17

+34 93 220 38 75

+33 1-78416974

+41 225 180 700

+49 221 162 56897

+43 720116182

+31 858880253

+7 4995000466

+46 844 68 36 76

+47 219 30 570

+45 898 83 996

+39 02-94751194

+48 223 988 072

+81 345 895 399

+55 213 958 08 76

+86 19816218990



PORTLAND ENGLISH LANGUAGE ACADEMY

www.PortlandEnglish.edu
 2007 Lloyd Center
 Portland, Oregon 97232 U.S.A.



apply@PortlandEnglish.edu
 503-226-1656

Book at worldwide lowest price at:
<https://www.languagecourse.net/school-portland-english-language-academy-portland.php3>

- | | | | | | | |
|------------------|-------------------|-------------------|-----------------|-----------------|-------------------|-----------------|
| +1 646 503 18 10 | +44 330 124 03 17 | +34 93 220 38 75 | +33 1-78416974 | +41 225 180 700 | +49 221 162 56897 | +43 720116182 |
| +31 858880253 | +7 4995000466 | +46 844 68 36 76 | +47 219 30 570 | +45 898 83 996 | +39 02-94751194 | +48 223 988 072 |
| | +81 345 895 399 | +55 213 958 08 76 | +86 19816218990 | | | |