



ACHIEVE YOUR DREAMS at SENDAGAYA !

A Long-Term Course for Entering Japanese Universities,
 Graduate Schools and Vocational Schools

The College with University Preparatory Course Recognized by Ministry of Education, Culture, Sports, Science and Technology in Japan

- In order to have a further study at Japanese universities or vocational schools, students are required to have completed 12 years of formal school education (primary & secondary educations) or education at the equivalent level either in Japan or in foreign countries. Attending this course will qualify you for entering Japanese universities even if you do not have 12 years of formal school education in your home country.
- Students are able to take basic subjects such as math and physics to prepare for EJU examination (Examination for Japanese University Admission for International Students), which is required for entering Japanese universities or vocational schools.
- Period for student visa application is comparatively longer than other courses. For April entry, we accept applications until late January; for October entry, we accept them until late July.
- Students studying at our long-term course can apply for a commuter pass with student discount. For JR bullet trains and some buses, student discount prices can also be applicable.

Duration	Time Schedule	Enrollment	Entry Level
1 Year	Monday - Friday 5 lessons a day (4 lessons on Fridays)	April	Beginner - Advanced
1.5 Years	8:50 - 13:00 or	October	
2 Years	13:30 - 17:40	April	

Characteristics

There are unfortunately many foreign students who talk about their difficulties in keeping up with the classes after they enter universities.

However, you do not have to worry as long as you study with us. This is because when you study at this course, not only abilities to pass the entrance examination but also skills of Japanese applications, expressions, and logical thinking can be well cultivated. Therefore, you can participate actively in class after entering universities, graduate schools or vocational schools. In addition, our another goal is to develop our students to have abilities of adapting themselves to various kinds of occasions in Japanese, including business situations, after they graduate and become a member of society.

Students whose Japanese are at the intermediate II level or up are able to take elective subjects, such as entrance examination preparations, preparatory lessons for JLPT, business Japanese, and etc.

At Sendagaya Japanese College, we provide various kinds of classes to help you to achieve your dreams!



LanguageCourse^{net} Book at worldwide lowest price at:
<https://www.languagecourse.net/school-sendagaya-japanese-institute-tokyo.php3>

USA +1 646 503 18 10
 CAN +31 858880253

UK +44 330 124 03 17
 AUS +7 4995000466

ESP +34 93 220 38 75
 JPN +46 844 68 36 76
 IND +81 345 895 399

FRA +33 1-78416974
 DEU +47 219 30 570
 GBR +55 213 958 08 76

CHN +41 225 180 700
 ITA +45 898 83 996
 USA +86 19816218990

GER +49 221 162 56897
 FRA +39 02-94751194

USA +43 720116182
 CAN +48 223 988 072



Basic Subjects

<Timetable Example of University Preparatory Class>

	Monday	Tuesday	Wednesday	Thursday	Friday
1st・2nd Period	Comprehensive Japanese	Comprehensive Japanese	Comprehensive Japanese	Comprehensive Japanese	Comprehensive Japanese
3rd Period	Reading	Reading	Reading	Writing	Reading
4th Period	Listening	Reading & Listening	Reading & Listening	Reading	Listening
5th Period	Math	Physics	Chemistry	English	

★ The lessons of math, science and Japan and the World are the preparations for EJU examination, and the English lessons are for the entrance examination preparation of universities.

<Timetable Example of Graduate School Preparatory Class>

	Monday	Tuesday	Wednesday	Thursday	Friday
1st・2nd Period	Comprehensive Japanese	Comprehensive Japanese	Comprehensive Japanese	Comprehensive Japanese	Comprehensive Japanese
3rd Period	Expressions	Reading	Reading	Listening	Grammar & Expressions
4th・5th Period	Presentation	Preparation for Research Proposal			

Elective Subjects (Examples)

[Exam Preparations]

Preparations for JLPT N1
Preparations for JLPT N2
Preparations for JLPT N3
Preparations for EJU
University Exam Preparations
Basic Subjects
(Math, Science, Japan and the World, English)

Others

[Comprehensive Japanese]

Advanced Japanese
Translation
Discussion
Japanese Culture and Customs
Japanese for University Students
Public Speaking

Others

[Business Japanese]

Japanese for Working People
Japanese for Job Hunting in Japan

- Japanese Corporate Culture
- How to Make an Appointment
- How to Make an Appealing Resume
- Job Interview Practice

[Graduate School Preparations]

Graduate School Preparatory Class

- How to Plan a Research Proposal
- Preparations for Interviews and Oral Tests
- How to Retrieve Information about Professors and Theses
- Reading Comprehension of Theses
- Thesis Expressions

★ Students at intermediate level or up are able to take elective subjects.
★ Available elective subjects might be changed upon students' needs and requests.

Levels

2-Year Course			
Level	Month	Achievement	
Elementary I	April	Passing N5	
	May		
	June		
Elementary II	July	Passing N4	
	August		
	September		
Intermediate I	October	Passing N4 ~ N3	
	November		
	December		
Intermediate II	January	Passing N3 ~ N2	EJU Scores 200 ~ 250
	February		
	March		
Pre-Advanced	April	Passing N3 ~ N2	EJU Scores 200 ~ 250
	May		
	June		
Advanced I	July	Passing N2 ~ N1	EJU Scores 250 ~ 300
	August		
	September		
Advanced II	October	Passing N2 ~ N1	EJU Scores 250 ~ 300
	November		
	December		
Advanced III	January	Passing N2 ~ N1	EJU Scores 250 ~ 300
	February		
	March		

1.5-Year Course			
Level	Month	Achievement	
Elementary I	October	Passing N5	
	November		
	December		
Elementary II	January	Passing N4	
	February		
	March		
Intermediate I	April	Passing N4 ~ N3	
	May		
	June		
Intermediate II	July	Passing N3 ~ N2	EJU Scores 200 ~ 250
	August		
	September		
Pre-Advanced	October	Passing N3 ~ N2	EJU Scores 200 ~ 250
	November		
	December		
Advanced I	January	Passing N2 ~ N1	EJU Scores 200 ~ 250
	February		
	March		



LanguageCourse^{net} Book at worldwide lowest price at:

<https://www.languagecourse.net/school-sendagaya-japanese-institute-tokyo.php3>

🇺🇸 +1 646 503 18 10

🇬🇧 +44 330 124 03 17

🇪🇸 +34 93 220 38 75

🇫🇷 +33 1-78416974

🇨🇦 +41 225 180 700

🇩🇪 +49 221 162 56897

🇮🇹 +43 720116182

🇯🇵 +31 858880253

🇮🇳 +7 4995000466

🇺🇸 +46 844 68 36 76

🇸🇪 +47 219 30 570

🇨🇦 +45 898 83 996

🇮🇹 +39 02-94751194

🇮🇹 +48 223 988 072

🇺🇸 +81 345 895 399

🇸🇪 +55 213 958 08 76

🇨🇦 +86 19816218990

[Consultations]

Whenever you wish, you can have a consultation with your teachers at our consultation room. 'Original Consultation Notebook' is used to keep your records and necessary information to choose your further studies. We support you till you can reach your ideal goals.



[School Introductory Orientations]

Universities, graduate schools and vocational schools visit us and introduce their schools. We have these opportunities more than 20 times per year.
Waseda University / Keio University / Doshisha University / Sophia University / Chuo University and more



[Recommended Enrollment by Designated Schools]

More than 60 universities and vocational schools give us recommended enrollment.
Hosei University / Toyo University / Senshu University / Showa Women's University / Gakushuin Women's College / Ecole De Patisserie De Tokyo / Japan Electronics College / Nihon Kogakuin College / Tokyo Animation College and more



Achievements

Universities

Kyushu University Faculty of Design / Iwate University Faculty of Engineering / Tokyo Metropolitan University Faculty of System Design / Aoyama Gakuin University College of Literature / Tokyo Institute of Technology School of Engineering / Shinshu University Faculty of Textile Science and Technology / Meiji University School of Commerce / Yokohama National University Faculty of Business Administration / Waseda University School of Advanced Science and Engineering / University of Tsukuba School of Humanities and Culture / Keio University Faculty of Environment and Information Studies / Musashino Art University College of Art and Design / Sophia University Faculty of Economics and more

Graduate Schools

The University of Tokyo Graduate School of Engineering / Hitotsubashi University Graduate School of Economics / Keio University Graduate School of Business Administration / Hokkaido University Graduate School of Business Administration / Yokohama National University Graduate School of International Social Sciences / Waseda University Graduate School of Creative Science and Engineering / Saitama University Graduate School of Humanities and Social Science / Sophia University Graduate School of Humanities / Nagoya University Graduate School of Medicine / Tokyo University of Foreign Studies Graduate School of International and Area Studies / Aoyama Gakuin University Graduate School of Science and Engineering / Kyushu University Interdisciplinary Graduate School of Engineering Sciences and more

Vocational Schools

Akahori College of Confectionery / Tokyo Design Academy / Bunka Fashion College / Toho Gakuen Film Techniques Training College / Tokyo International Business College / Tokyo Fashion Art College / Yamano Beauty College / Japan Electronics College / Ecole De Patisserie De Tokyo / Japan College of Foreign Languages / Waseda International Business College / The Japan Hotel School / Tokyo Designer Gakuin College / Nippon Designers School / Shokuryo Gakuin / Tokyo Mode Gakuen / Nihon Kogakuin College / Tokyo Multimedia College and more

Scholarships

Types

- Sendagaya Scholarship
- MOE Honors Scholarship for Privately-Financed International Students
- Takayama Scholarship
- Kyoritsu Group Scholarship

Requirements

- Good academic results
- More than 90% of attendance rate
- Good learning attitude
- 6 months or up after enrollment
- Students who will go on to further studies and are of good conduct



LanguageCourse^{net} Book at worldwide lowest price at:

<https://www.languagecourse.net/school-sendagaya-japanese-institute-tokyo.php3>

USA +1 646 503 18 10
UK +31 858880253

UK +44 330 124 03 17
UK +7 4995000466

Spain +34 93 220 38 75
Spain +46 844 68 36 76
● +81 345 895 399

France +33 1-78416974
France +47 219 30 570
France +55 213 958 08 76

Switzerland +41 225 180 700
Switzerland +45 898 83 996
Switzerland +86 19816218990

Germany +49 221 162 56897
Italy +39 02-94751194

Spain +43 720116182
Spain +48 223 988 072

Student Visa Application Period

Enrollment	Period for Submission of Application Documents	Results from Immigration Bureau
April	1 September (previous year) - 20 January	Late February
October	1 February - 20 July	Late August



Attention When Applying for a Student Visa

- Documents submitted to the immigration bureau will not be returned to the applicant for whatever reason.
- If the visa application is not approved, the applicant should not ask the immigration bureau the reason directly.
- All the documents, certificates, and photos have to be issued within three months from the application date.
- Please provide Japanese translations if the original documents are issued in other foreign languages, such as Korean, Mandarin Chinese, and English.
- Please be reminded that there is a possibility that the application deadline will be earlier than that for documents submission.

Documents from the Applicant

①	Application Form ※	Applicant has to fill out the designated form, and all the blanks have to be filled out.
②	Personal Records ※	Applicant has to fill out the designated form. Applicant's educational history, work history, and previous Japanese learning experience should be written in chronological order. Also, all names of the authorities must be written in the same way as what has been printed on the certificates.
③	6 ID Photos	Size : 4cm (length) x 3cm (width) The photos should be taken within 3 months, from the front and without hat on.
④	Graduation Certificate	The original copy of the graduation certificate from the last educational institute attended (It will be returned later when the application process is completed.)
⑤	Certificate of Japanese Study Experience	Those who have experience in studying Japanese will be asked to submit a document certifying his/her previous Japanese study experience.
⑥	Passport Copy	Those who have had their passports: Please submit the copies of the page showing the applicant's personal information and the page with stamps on that show the records of entering and leaving Japan

Documents from the Financial Supporter

①	Letter of Paying Expenses ※	Applicant's financial supporter has to fill out the designated form.
②	Certificates of Employment and Incomes	Documents showing the financial supporter's employment and incomes

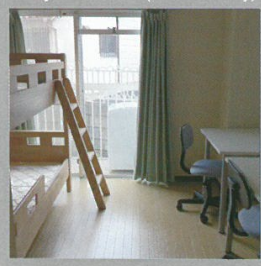
Application Documents

Please be noted that there is a possibility that the submission of other documents might be requested if the school considers it is necessary.

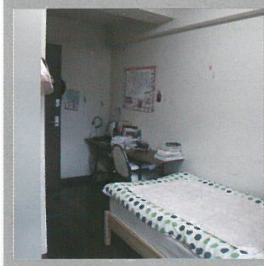
Documents with "※" mark have to be the forms designated by the school.

School Dormitories

Ariyakushimae (Female Only)



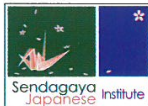
Takadanobaba



Dai-ichi Takadanobaba



Nishi-Kasai



Sendagaya Japanese Institute Group

Sendagaya Japanese College

- Authorized by the Association for the Promotion for Japanese-Language Education -

1-1-6 Shimo-Ochiai, Shinjuku-ku, Tokyo 161-0033, JAPAN

E-mail: info@jp-sji.org URL: <http://www.jp-sjs.ac.jp/eng>

LanguageCourse^{net} Book at worldwide lowest price at:

<https://www.languagecourse.net/school-sendagaya-japanese-institute-tokyo.php3>

🇺🇸 +1 646 503 18 10

🇬🇧 +44 330 124 03 17

🇪🇸 +34 93 220 38 75

🇫🇷 +33 1-78416974

🇨🇭 +41 225 180 700

🇩🇪 +49 221 162 56897

🇮🇹 +43 720116182

🇯🇵 +31 858880253

🇮🇳 +7 4995000466

🇺🇸 +46 844 68 36 76

🇩🇪 +47 219 30 570

🇨🇭 +45 898 83 996

🇮🇹 +39 02-94751194

🇮🇹 +48 223 988 072

🇯🇵 +81 345 895 399

🇩🇪 +55 213 958 08 76

🇨🇭 +86 19816218990