

More than language  
experience the culture and lifestyle



SHIBUYA  
GAIKO  
GAKUIN

Japanese Language School in Tokyo

**SCHOOL ADDRESS**

Yakō Bldg. 2F-3F  
1-34-6 Takadanobaba  
Shinjuku-ku, Tokyo  
169-0075, JAPAN

**CONTACT INFORMATION**

Official Website: <https://shibuyajp.net/>  
E-mail: [office@shibuyajp.net](mailto:office@shibuyajp.net)  
Telephone: (+81) 03-6233-9963  
Fax: (+81) 03-6233-9964

**FOLLOW US**

Instagram: @shibuyagaigo  
Facebook: [www.facebook.com/Shibuya.Gaigo.Gakuin](http://www.facebook.com/Shibuya.Gaigo.Gakuin)



OFFICIAL WEBSITE

渋谷外語学院 Since 1990

LanguageCourse.net Book at worldwide lowest price at:

<https://www.languagecourse.net/school-shibuya-gaigo-gakuin-shinjuku.php3>

- |                  |                   |                   |                 |                 |                   |                 |
|------------------|-------------------|-------------------|-----------------|-----------------|-------------------|-----------------|
| +1 646 503 18 10 | +44 330 124 03 17 | +34 93 220 38 75  | +33 1-78416974  | +41 225 180 700 | +49 221 162 56897 | +43 720116182   |
| +31 858880253    | +7 4995000466     | +46 844 68 36 76  | +47 219 30 570  | +45 898 83 996  | +39 02-94751194   | +86 223 988 072 |
|                  | +81 345 895 399   | +55 213 958 08 76 | +86 19816218990 |                 |                   |                 |

# CONTENTS



## 01 ABOUT SHIBUYA GAIGO GAKUIN

1.1 INTERNATIONAL LANGUAGE SCHOOL	05
1.2 CONVENIENT LOCATION	07

## 02 ABOUT OUR TEAM

2.1 TEAM INTRODUCTION	09
-----------------------	----

## 03 COURSE INTRODUCTION

3.1 TEACHING FOCUS	13
3.2 STUDENT VISA COURSE	14
3.3 SHORT-TERM COURSE	15
3.4 SUMMER COURSE	16
3.5 CLASS LEVELS	17

## 04 ENVIRONMENT

4.1 LOCATION	19
4.2 SURROUNDINGS	20
4.3 SCHOOL FACILITIES	21
4.4 EXTRACURRICULAR ACTIVITIES	23
4.5 STUDENT VOICE	24

## 05 APPLICATION PROCESS

5.1 APPLICATION PROCESS	27
5.2 FREQUENTLY ASKED QUESTIONS	28

## 06 ACCESSIBILITY

6.1 CONTACT INFORMATION	31
-------------------------	----









## 1.2 CONVENIENT LOCATION

The school is located in Takadanobaba, Shinjuku, a busy student area in Tokyo, and the nearest station is only 30 seconds away.



LanguageCourse<sup>net</sup> Book at worldwide lowest price at:  
<https://www.languagecourse.net/school-shibuya-gaigo-gakuin-shinjuku.php3>

- |                  |                   |                  |                 |                 |                   |                 |
|------------------|-------------------|------------------|-----------------|-----------------|-------------------|-----------------|
| +1 646 503 18 10 | +44 330 124 03 17 | +34 93 220 38 75 | +33 1-78416974  | +41 225 180 700 | +49 221 162 56897 | +43 720116182   |
| +31 858880253    | +7 4995000466     | +46 844 68 36 76 | +47 219 30 570  | +45 898 83 996  | +39 02-94751194   | +48 223 988 072 |
|                  | +81 345 895 399   | +61 2 958 08 76  | +86 19816218990 |                 |                   |                 |



# ABOUT OUR TEAM

学生の皆さん、こんにちは!  
どうぞよろしく申し上げます。



02

## 2.1 TEAM INTRODUCTION



**NAKAJIMA Junko**

SCHOOL PRINCIPAL

### Work Experience

Worked as a Japanese language lecturer for over 18 years and is currently the principal of Shibuya Gaigo Gakuin.

### Interests

Travelling to various places with her dog on holiday.

### A word to the students:

Our educational philosophy is to guide learners with different cultures, habits and values to achieve independent learning and to pursue Japanese language education for the individual's well-being. Our experienced teachers aim to provide guidance to our students with this in mind.

Learning Japanese with international students from all walks of life is one of Shibuya Gaigo Gakuin's greatest appeals. In this international environment, we want our students to enjoy learning while understanding each other's differences in culture, history, and lifestyle.

Our Japanese language course takes a holistic approach with the goal of developing our students' listening, speaking, reading, and writing skills through a variety of in-class exercises and activities, emphasizing Japanese conversation skills. Our students should feel the improvement in their speaking skills soon after starting the course.

Our school is filled with students from all over the world who have a genuine love for Japanese culture. Why not be part of this exciting journey of Japanese language learning with us? We look forward to meeting you!



## YAMADA Sensei

HEAD OF EDUCATIONAL DEPARTMENT

### Work Experience

She taught Japanese in Thailand for 7 years, and has been teaching Japanese at Shibuya Gaigo Gakuin since 2015. She is a popular lecturer at Shibuya Gaigo Gakuin.

### Interests

Italian pop music and cooking. Recently, she has also taken a keen interest in video editing and video design.

#### A word to the students:

I am sure there are many reasons for wanting to learn Japanese in Tokyo, such as "it's fun", "I like it", or "I want to be good at it!" I think it is important to keep such a mindset because it will definitely help with your language learning. At our school, we are committed to sharing this mindset with our students while focusing on teaching practical Japanese that can be used in the real world. We will do our best to help you achieve your dreams and goals in Japan!



## JIN Sensei

SENIOR LECTURER

### Work Experience

Specialized in linguistics and Japanese studies at university level, with a secondary specialization in Japanese language education. She has been working as a Japanese language educator for many years since graduation. She has passed the Japanese Language Education Proficiency Test and is a very experienced Japanese language teacher.

### Interests

Gaming, comics, music, ICT education

#### A word to the students:

I am very interested in the "power of words", which is why I started working in this field. The judgment of one's own competence is also very important when it comes to the use of words. Even if different people are to see the same thing, the way it is described can be different from person to person, and it can evoke different feelings depending on who perceives it. I feel that my world also expands when I come into contact with the Japanese language used by different people. I hope you too can expand your world through the Japanese language by getting a good grasp of the basics and acquiring more knowledge of the language.



## Fabrizio

ADMINISTRATIVE MANAGER

### From

Italy

### Languages spoken

Italian, English, Japanese

### Interests

All kinds of Japanese culture, manga, games, art, literature, mythology

#### A word to the students:

I have been interested in Japan since I was a child, so I started to study Japanese first by myself and furthered my Japanese studies at the University of Venice in Italy. I came to Japan to study at Shibuya Gaigo Gakuin after graduating from my university, and continued to stay at the school to work. I hope more foreign students will be able to achieve their goals like I was able to!



## Sara

ADMINISTRATIVE COORDINATOR

### From

Belgium

### Languages spoken

French, English, Japanese

### Interests

Karaoke, fashion, Japanese drama, cafe hopping

#### A word to the students:

I first learned about Japan when I was a child through Japanese anime like Sailor Moon. After learning more about the Japanese culture, the idea of living in Japan came to me. After I grew up and saved money from work, I finally came to Japan to study at Shibuya Gaigo Gakuin in 2013 and realized my dream of working and living in Japan. I hope that every student can start from a very small point of interest and experience the joy of discovering Japan.



# COURSE INTRODUCTION



03

## 3.1 TEACHING FOCUS

The Japanese language course we offer has a strong emphasis on conversational Japanese from the very beginning. We pride ourselves in our international environment and small class sizes, which is optimal for our conversation-focused course. We take a communicative approach to teaching and maximize student participation in class through group work, pair work, and a game-based curriculum that encourages our students to use Japanese comfortably. At the end of each term, we invite Japanese locals as guests for our students' presentations, giving our students the opportunity to interact and exchange ideas with the Japanese locals. A variety of extracurricular activities are also planned each term to help students understand and experience Japanese culture.



### 3.2 STUDENT VISA COURSE

Suitable for students who wish to study Japanese for 1-2 years, learn Japanese systematically and want to improve their conversational Japanese.

COURSE DETAILS	
STUDENT VISA COURSE	
LENGTH	1 year · 2 years
LEVEL	11 Levels *The level of each student is determined by the student's Japanese level at the time of their application
LESSON HOURS	4 lessons per day (45 minutes per lesson) Monday - Friday, 9:30 - 13:00 or 13:30 - 17:00 *Morning or Afternoon classes are determined by the students' level.
TOTAL HOURS	2 years course: 1600 lessons · 1 year course: 800 lessons
ACTIVITIES	With a focus on Japanese cultural experience, a wide range of extracurricular activities are organized each term.
CLASS SIZE	6 - 20 students per class.
APPLICATION	<p>Application Deadline            January session: Beginning of September            April session: Middle of November            July session: Beginning of March            October session: End of May</p> <ul style="list-style-type: none"> <li>- Definitive dates will be posted on our website once they are confirmed.</li> <li>- 1 year course applications are only available in April and October.</li> <li>- All necessary documents and information must be sent before the deadline.</li> </ul>
REQUIREMENTS	<ol style="list-style-type: none"> <li>1. Must be 18 years old or over</li> <li>2. At least 12 years of formal school education or equivalent</li> <li>3. Have studied some Japanese or have basic knowledge of Hiragana and Katakana</li> </ol>

### 3.3 SHORT-TERM COURSE

Suitable for students and working individuals who wish to learn Japanese for a short period of 1-3 months, study abroad for a short period of time, or further study in Japanese.

COURSE DETAILS	
SHORT-TERM COURSE	
LENGTH	10 Weeks · 4 Weeks · 2 Weeks
LEVEL	11 Levels *The level of each student is determined by the student's Japanese level at the time of their application
LESSON HOURS	4 lessons per day (45 minutes per lesson) Monday - Friday, 9:30 - 13:00 or 13:30 - 17:00 *Morning or Afternoon classes are determined by the students' level.
TOTAL HOURS	10 weeks course: 200 lessons · 4 weeks: 80 lessons 2 weeks: 40 lessons
ACTIVITIES	With a focus on Japanese cultural experience, a wide range of extracurricular activities are offered each term.
CLASS SIZE	6 - 20 students per class.
APPLICATION	<p>Application Deadline: 1 month before the start of the session.</p> <ul style="list-style-type: none"> <li>- Definitive dates will be posted on our website once they are confirmed.</li> </ul>
REQUIREMENTS	<ol style="list-style-type: none"> <li>1. Must be 18 years old or over</li> <li>2. Ability to read and write Hiragana and Katakana</li> </ol>





### 3.4 SUMMER COURSE

Suitable for students who wants to study Japanese for 2 weeks in the summer, with a focus on experiencing Japanese culture.

#### 1. CONVERSATION COURSE

Students will study daily life expressions and have the opportunity to utilize them in various situations. You will have the chance to speak Japanese during your stay in no time!

#### 2. JLPT COURSE

This preparation course is designed for students planning to take the N1 or N2. Japanese Language Proficiency Test. Students will focus on specific content and practical exercises to improve their Japanese skill and build confidence for the exam.

#### COURSE DETAILS

	CONVERSATION	JLPT
LENGTH	2 weeks	
LEVEL	Beginner/Basic Pre-Intermediate Intermediate	N1-N2
LESSON HOURS	4 lessons per day (45minutes per lesson) X 10 days Monday - Friday, 9:30 - 13:00	
TOTAL HOURS	40 lessons	
ACTIVITIES	Participation is optional. Usually held weekday afternoons or weekends.	
CLASS SIZE	10 students per class	
APPLICATION	Application Deadline: 1 month before the start of the session. - Definitive dates will be posted on our website once they are confirmed.	
REQUIREMENTS	1. Online Level Check 2. Ability to read and write Hiragana and Katakana	

### 3.5 CLASS LEVELS

A professional system of progression courses, with comprehensive guidance for different students with different needs for further education.

LEVELS	JLPT	CEFR
BASIC 1	-	A1
BASIC 2	N5	A1
PRE-INTERMEDIATE 1	N4	A2
PRE-INTERMEDIATE 2	N4	A2
INTERMEDIATE 1	N4/N3	B1
INTERMEDIATE 2	N3	B1
UPPER-INTERMEDIATE 1	N3/N2	B2
UPPER-INTERMEDIATE 2	N2	B2
UPPER-INTERMEDIATE 3	N2	B2
ADVANCED	N1	C1
SUPERIOR	N1	C2

# ENVIRONMENT

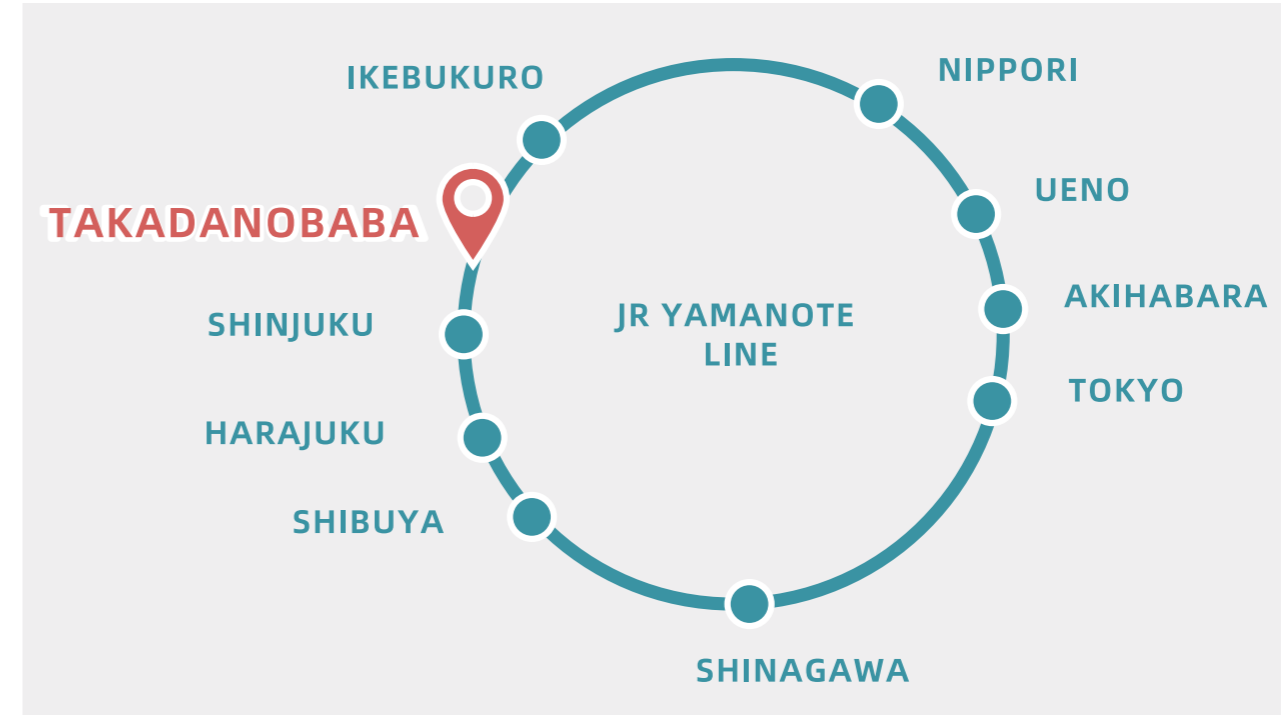


## 04

The school is located in Takadanobaba, one of Tokyo's famous "student districts" and multicultural spots, just a minute's walk from the station. You will find not only the hustle and bustle of a big city, but also the atmosphere of Japanese cultural life in the streets and alleys.

## 4.1 LOCATION

Takadanobaba (Location: one minute walk from the station)



## EASY ACCESS

The main areas of central Tokyo are easily accessible by train, with Shinjuku, Ikebukuro and Nakano just two stations away, Harajuku four stations away. Shibuya is only five stations away and Shin-Okubo is also within walking distance of the school. After school, you can travel to various parts of Tokyo to experience a variety of entertainment, learn about Japanese culture and trends, and experience cultures from around the world.



## 4.2 SURROUNDINGS

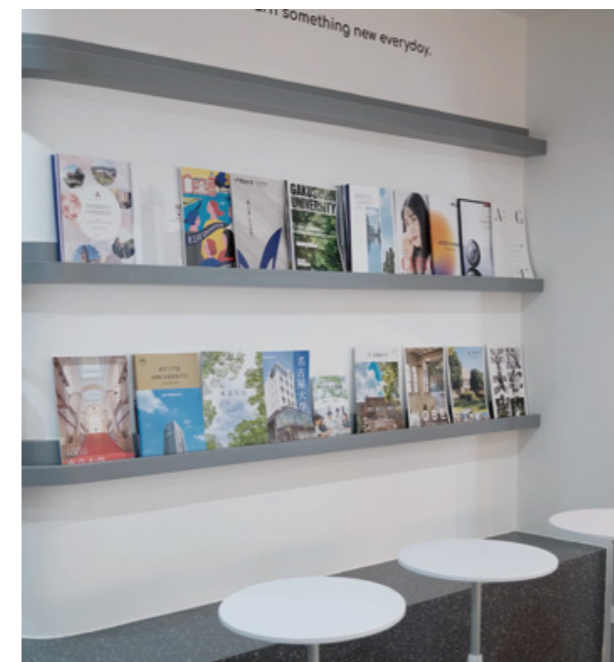


### ARTISTIC ATMOSPHERE

Mr. Osamu Tezuka, the famous Japanese manga artist, had his studio located in Takadanobaba when he created Astro Boy. Nowadays, when we arrive at Takadanobaba on the JR Yamanote Line, the platform plays the familiar theme song of the "Astro Boy" anime as the trains depart.



## 4.3 SCHOOL FACILITIES







## 4.4 EXTRACURRICULAR ACTIVITIES

In addition to the Japanese language classes, a variety of extracurricular activities are held each term to provide opportunities for students to experience Japan more immersively. Some of the activities we organized in the past includes calligraphy, tea ceremony, watching Kabuki performance, sumo wrestling, shrine and temple tours. Participation in these activities is voluntary and may be subject to a participation fee.





## 4.5 STUDENT VOICE



**Argentino, Christopher**  
From: Italy

### Q Why did you decide to live in Japan?

After visiting Japan for the first time as a tourist, I fell in love with the country. After that first encounter, I knew I had to live here and take in the culture as much as possible.

### Q Why did you choose Shibuya Gaigo Gakuin?

After looking at various schools online, the best fit for my needs was SGG, both for the location and the teaching method. I couldn't have made a better choice!

### Q In your opinion, what is the best thing about studying in Japan at Shibuya Gaigo Gakuin?

I came here not knowing a single word of Japanese other than the basics. The teaching method the school encourages throws you into the deep end, forcing you to learn how to swim fast. Full immersion in Japanese is the only way to learn this language.

### Q What are your plans after graduating from Shibuya Gaigo Gakuin?

At the end of my final term with SGG, I'll take some time to enjoy the country as a tourist and travel to the Prefectures I haven't had a chance to visit yet. But this time, I'll be able to talk to people around me rather than use Google Translate and find myself in awkward situations because of a mistranslation.

### Q What would you tell to others who wish to study at Shibuya Gaigo Gakuin?

If you want to learn the language quickly and efficiently, SGG is the school for you. Here you don't just find yourself learning in a friendly environment, but you are also looked after by the staff. Whatever problem you may have in your day-to-day life in Japan, the school staff is there to help. For example, I had some issues regarding my Wi-Fi when I first moved here, and my Japanese was far from fluent; the staff proceeded to call the company for me and helped me set my internet up. When you're moving to a country that has such a diverse culture from your own, it's good to have someone that will hold your hand to settle in.



**Yip, Karmen**  
From: Hong Kong

### Q Why did you decide to live in Japan?

I love Japan's culture, including animation, JPOP, as well as art. I've been working as a designer in Hong Kong for more than 7 years and I was looking for new challenges in my life that may broaden my horizon, so I decided to study abroad in my favorite country – Japan.

### Q Why did you choose Shibuya Gaigo Gakuin?

I've studied in other Japanese language schools in Japan before joining SGG. The teaching method in the previous schools was very traditional, strict and one-sided. I got a lot of homework and tests every day and didn't have any time to explore the country. I found that such type of school was not suitable for me and therefore, I started searching for a better school which allows me to really enjoy life in Japan and I found SGG.

### Q In your opinion, what is the best thing about studying in Japan at Shibuya Gaigo Gakuin?

When comparing to my previous Japanese language schools, SGG is much more suitable for me. Instead of just reading the textbook and memorizing the grammar/kanji, I got a lot of opportunities to learn practical Japanese during the lessons. For example, how to make a restaurant reservation, how to tell the hairstylist what you want...etc., which really helps my daily life. On top of that, I love the school atmosphere here. The teachers always motivate and encourage you to speak in Japanese even if you make mistakes. Teachers, staffs and classmates are friendly and fun. Therefore, I enjoy the life in SGG.

### Q What are your plans after graduating from Shibuya Gaigo Gakuin?

I would like to find a full-time designer job and stay in Japan. I would like to travel to different cities in Japan too.

### Q What would you tell to others who wish to study at Shibuya Gaigo Gakuin?

If you aim only at passing the JLPT exam in a short period of time, go to a more traditional Japanese language school. But if you are a person like me, who wants to enjoy learning practical Japanese and life in Japan, I will highly recommend SGG!

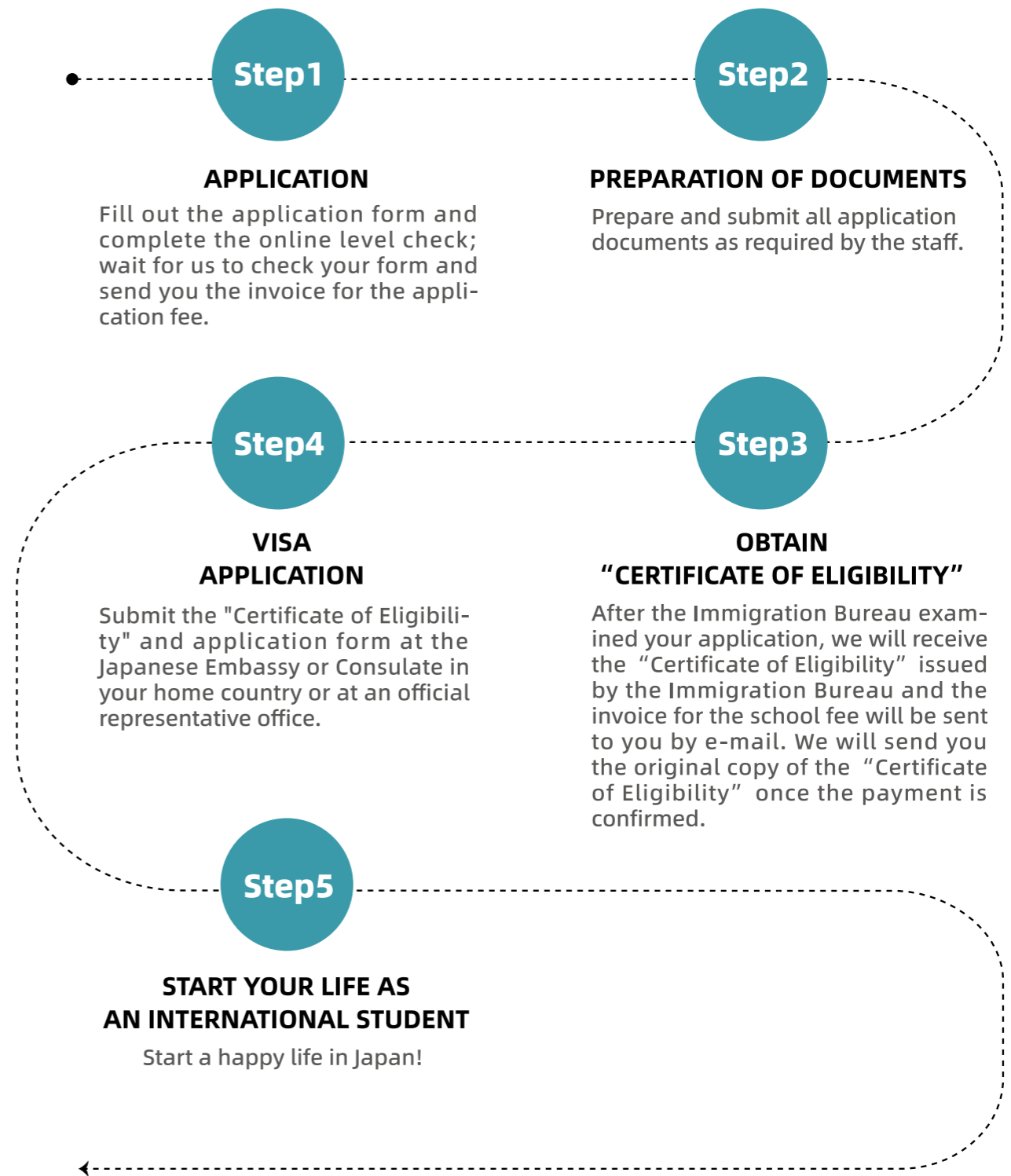
# APPLICATION PROCESS



05

At Shibuya Gaigo Gakuin, we have a total of four terms in a year to which you can apply. You can begin to apply and prepare the documents roughly six months in advance at the earliest.

## 5.1 APPLICATION PROCESS





## 5.2 FREQUENTLY ASKED QUESTIONS

**Q: WHAT IS THE DIFFERENCE BETWEEN SGG AND OTHER LANGUAGE SCHOOLS?**

Shibuya Gaigo Gakuin is not only very easily accessible, but students can also experience Japanese culture up close and personal. As we have international students from different parts of the world such as Europe, the United States and Asia, we place more emphasis on interaction and cultural exchange through the Japanese language in our course.

**Q: I AM A LITTLE WORRIED ABOUT COMING TO JAPAN ALONE, IS THERE ANY SUPPORT FROM THE SCHOOL?**

The students are free to contact the teachers if they have any questions regarding their studies. Students can also talk to the teachers or the school staff if they are unsure of or need help with something. To aid students' transition into their lives in Japan smoothly, we will try our best to guide and help every student and ease their worries of being in a foreign country.

**Q: WHAT LANGUAGE IS THE CLASS CONDUCTED IN?**

Our classes are all taught in Japanese, and our instructors are Japanese teachers with many years of experience in teaching Japanese.

**Q: HOW ARE THE CLASSES DIVIDED?**

We assess students' Japanese skill level through an online written test and a one-on-one interview with our Japanese teachers. The students will be assigned to different class level based mainly on the student's speaking ability.

**Q: CAN I WORK PART-TIME?**

Students with a student visa are allowed to work 28 hours per week after receiving a "Permission to engage in activity other than that permitted under the status of residence previously granted". Students with a short-term visa cannot work part-time.

# SCHOOL LOCATION



## 6.1 CONTACT INFORMATION



### SCHOOL ADDRESS

Yakō Bldg. 2F-3F, 1-34-6 Takadanobaba, Shinjuku-ku, Tokyo, 169-0075, JAPAN

### CONTACT INFORMATION

Official Website: <https://shibuyajp.net/>

E-mail: [office@shibuyajp.net](mailto:office@shibuyajp.net)

Telephone: (+81) 03-6233-9963

Fax: (+81) 03-6233-9964

### FOLLOW US

Instagram: @shibuyagaigo

Facebook: [www.facebook.com/Shibuya.Gaigo.Gakuin](http://www.facebook.com/Shibuya.Gaigo.Gakuin)



OFFICIAL WEBSITE