



SPROTT
SHAW
LANGUAGE
COLLEGE

JUL 1 - AUG 18, 2024

AGES 13-18



GOOD TIME SUMMER VANCOUVER 2024



A world of possibilities
Un monde de possibilités
EduCanada

Book at worldwide lowest price at:
<https://www.languagecourse.net/school-sslc-sprott-shaw-language-college-vancouver.php3>

+1 646 503 18 10
 +31 858880253

+44 330 124 03 17
 +7 4995000466

+34 93 220 38 75
 +46 844 68 36 76
 +81 345 895 399

+33 1-78416974
 +47 219 30 570
 +55 213 958 08 76

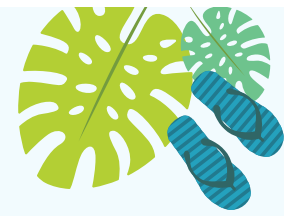
+41 225 180 700
 +45 898 83 996
 +86 19816218990

+49 221 162 56897
 +39 02-94751194

+43 720116182
 +48 223 988 072

GOOD TIME SUMMER SCHEDULE

Weekday activities start at 3:00 pm



TIME	MONDAY	TUESDAY	WEDNESDAY	THURSDAY	FRIDAY	SATURDAY	SUNDAY
WEEK 1	July 1	July 2	July 3	July 4	July 5	July 6	July 7
9:00~3:00	Canada Day (School Closed)	New Student Orientation & ESL	ESL	ESL	ESL	Grouse Mountain	Free Time
AFTER SCHOOL		Free Time	Vancouver City Walking Tour	Granville Island	Kayaking/Paddling		
WEEK 2	July 8	July 9	July 10	July 11	July 12	July 13	July 14
9:00~3:00	New Student Orientation & ESL	ESL	ESL	ESL	ESL	Lynn Canyon Suspension Bridge	Free Time
AFTER SCHOOL	Free Time	Swimming	Laser Tag	Free Time	Harbour Cruises		
WEEK 3	July 15	July 16	July 17	July 18	July 19	July 20	July 21
9:00~3:00	New Student Orientation & ESL	ESL	ESL	ESL	ESL	Playland	Free Time
AFTER SCHOOL	Free Time	Movie Night	Beach Day	Free Time	Outlet Shopping		
WEEK 4	July 22	July 23	July 24	July 25	July 26	July 27	July 28
9:00~3:00	New Student Orientation & ESL	ESL	ESL	ESL	ESL	Deep Cove	Free Time
AFTER SCHOOL	Free Time	FlyOver Canada	Science World	Free Time	Stanley Park Bike Ride		
WEEK 5	July 29	July 30	July 31	Aug 1	Aug 2	Aug 3	Aug 4
9:00~3:00	New Student Orientation & ESL	ESL	ESL	ESL	ESL	UBC Botanical Garden with Tree Top Walk	Free Time
AFTER SCHOOL	Free Time	Vancouver City Walking Tour	Granville Island	Free Time	Kayaking/Paddling		
WEEK 6	Aug 5	Aug 6	Aug 7	Aug 8	Aug 9	Aug 10	Aug 11
9:00~3:00	BC Day (No School)	New Student Orientation/ESL	ESL	ESL	ESL	Lynn Canyon Suspension Bridge	Free Time
AFTER SCHOOL		Free Time	Laser Tag	Swimming	Harbour Cruises		
WEEK 7	Aug 12	Aug 13	Aug 14	Aug 15	Aug 16	Aug 17	Aug 18
9:00~3:00	ESL	ESL	ESL	ESL	ESL	Playland	Departure
AFTER SCHOOL	Free Time	Movie Night	Beach Day	Free Time	Outlet Shopping		

Activities are subject to change, and may be substituted with others. Substitution is not guaranteed.
There are no classes or activities on Canadian national/provincial holidays.

GOOD TIME SUMMER SCHEDULE

THE PROGRAM INCLUDES

- 25 hrs/week ESL Classes
- Registration Fee
- Material Fee
- After-Class Activities per week
- 1 Saturday Activity per week
- Graduation Certificate

HOMESTAY OPTION INCLUDES

- Placement Fee
- Single room with 3 meals a day/packed lunch for school days
- Airport Pick up and Drop Off from YVR airport

NOT INCLUDED

- Insurance (\$2.80/day)
- Custodian Document fee
- Local Transportation Pass (\$75/ per calendar month)

START DATE	2 WEEKS END DATE	3 WEEKS END DATE	4 WEEKS END DATE	5 WEEKS END DATE	6 WEEKS END DATE	7 WEEKS END DATE
July 2	July 13	July 20	July 27	August 3	August 10	August 17
July 8	July 20	July 27	August 3	August 10	August 17	--
July 15	July 27	August 3	August 10	August 17	--	--
July 22	August 3	August 10	August 17	--	--	--
July 29	August 10	August 17	--	--	--	--
August 6	August 17	--	--	--	--	--

- Check-in & Check-out: Sunday (*Check in on July 1, 2024 for the first week*)
- Minimum registration: 2 weeks
- Students opting to stay for the entire Program duration may repeat some of the activities. See the sample schedule.

	2 WEEKS	3 WEEKS	4 WEEKS	EXTRA WEEK
WITH HOMESTAY	\$3,445	\$4,690	\$5,900	\$1,350
WITHOUT HOMESTAY	\$2,435	\$3,305	\$4,140	\$975

- All Fees are in CAD
- Extra week fees only apply to registration over 4 weeks.

For Parents/Guardians:

- In the event that your child is unable to travel home as scheduled due to any emergency or delay and **your child's homestay accommodation is no longer available because of prior booking arrangements**, SSLC requires that the parent/guardian be responsible for all associated fees for the care of their child until such time that they can depart Canada.
- The associated fees in the above case mentioned may include but are not limited to: **Hotel accommodation, 3 meals/day, transportation, new flight arrangements and staff support services as needed.**
- Your child must travel with a credit card, or a Credit Card must be provided to SSLC for all charges as needed. **SSLC will not pay for any related costs.** We suggest using the services of www.sidekickcard.com for these emergency situations and be well prepared as a parent.
- Your child must also carry **Travel Insurance**, and we request that you purchase one extra day of coverage. You can purchase medical insurance from SSLC, please ask our staff.
- Please note if you requested Custodial services from SSLC, we are not responsible for any fees or costs related to Medical Emergencies.
- Parents and student will sign a separate consent form upon registration.



Subject to Change. Last Updated Oct. 16, 2023. For the latest info please check our website

www.studyssl.com

LanguageCourse.net Book at worldwide lowest price at:

<https://www.languagecourse.net/school-sslc-sprott-shaw-language-college-vancouver.php3>

🇺🇸 +1 646 503 18 10
🇨🇦 +31 858880253

🇬🇧 +44 330 124 03 17
🇩🇪 +7 4995000466

🇪🇸 +34 93 220 38 75
🇫🇷 +46 844 68 36 76
🇮🇹 +81 345 895 399

🇫🇷 +33 1-78416974
🇩🇰 +47 219 30 570
🇧🇷 +55 213 958 08 76

🇨🇦 +41 225 180 700
🇩🇪 +45 898 83 996
🇨🇦 +86 19816218990

🇩🇪 +49 221 162 56897
🇮🇹 +39 02-94751194

🇨🇦 +43 720116182
🇨🇦 +48 223 988 072