

GEC MARINE GATEWAY



FACILITIES & AMENITIES

- Free Wi-Fi
- Weekly Clean
- Reception
- Onsite Laundry
- Bedding/Linen provided
- CCTV
- Gym

GEC Marine Gateway
 8101 Nunavut Ln
 Vancouver, BC V5X 0E3, Canada
 Emergency phone: +1 604 831 4006

THE LOCATION

GEC Marine Gateway consists of our two newest buildings, featuring modern designs and energy-efficient amenities. This residence includes a beautifully landscaped outdoor area with gardens, seating, and public art. All apartments offer a spacious balcony or patio. GEC Marine Gateway is only a 1 minute walk from restaurants, shops, services, supermarkets, cinema and the Marine Drive Skytrain Station.

ARRIVAL & DEPARTURE

CHECK-IN* Sundays from 4pm

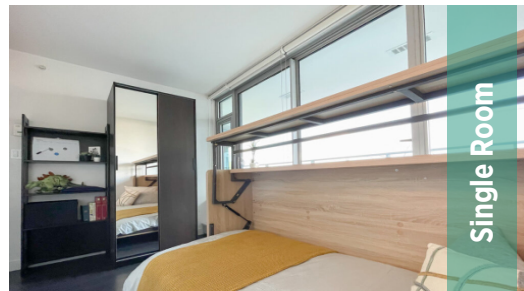
CHECK-OUT* Sundays before 11am

* **Check-in/Check-out:** There is a minimum stay of 5 weeks for this residence (min stay of two months for the single apartment, excluding June-Sept). Weekly rates are charged Sat-Sat or Sun-Sun regardless of weekday check-in/out.

WEEKLY PRICE

	Prices are per person Weekly Jan-Dec
Semi-private room, shared bathroom*	\$470
Single room, shared bathroom	\$684

There is an additional amenities fee of \$210 (including tax), which is non-refundable. A security deposit of \$600 is required at the time of booking. It is returned after your departure, less any costs for damage or outstanding payments. Students will need to have proof of tenant's insurance with \$1 million liability. It is non-returnable in case of cancellation less than 30 days before the start date.



Single Room



Shared Kitchen

VANCOUVER Accommodation

LanguageCourse^{net} Book at worldwide lowest price at: <https://www.languagecourse.net/school-st-giles-international-vancouver.php3>

- +1 646 503 18 10
- +44 330 124 03 17
- +34 93 220 38 75
- +33 1-78416974
- +41 225 180 700
- +49 221 162 56897
- +43 720116182
- +31 858880253
- +7 4995000466
- +46 844 68 36 76
- +47 219 30 570
- +45 898 83 996
- +39 02-94751194
- +48 223 988 072
- +81 345 895 399
- +55 213 958 08 76
- +86 19816218990