



www.studyholidays.com



BROCHURE 2024

ADVENTURES IN ENGLISH

BOURNEMOUTH • CAMBRIDGE • CANTERBURY • LONDON • NORTHAMPTON • OAKHAM • BOSTON • LOS ANGELES • NEW HAVEN • NEW YORK • SAN FRANCISCO

CANADA

USA

UK

SAN FRANCISCO

LOS ANGELES

HOLLYWOOD

GRAND CANYON

NEW HAVEN

NEW YORK

BOSTON

HARVARD UNIVERSITY

THE WHITE HOUSE

BOSTON



Boston is known as the education capital of the USA, with Harvard and MIT close by and over 250,000 students from all over the world. Our courses are run from the CATS Boston campus



WHALE WATCHING



NEW YORK

A city so good they named it twice, New York is city of diversity, dynamism and world renown. Our centre is run from the Wagner College in Staten Island

LOS ANGELES



Our summer course is located at the famous California State University. The Channel Islands Campus is situated in Camarillo in California



NEW HAVEN

New Haven and Yale University is a bustling and important cultural centre, providing students with the ideal location for their study holiday



ADVENTURES in ENGLISH



LOCK NESS MONSTER

LOCH LOMOND

GLASGOW

EDINBURGH CASTLE



NORTHAMPTON

Based at the beautiful Bosworth Independent School, the top rated independent school in Northampton

MANCHESTER

PEAK DISTRICT

NORTHAMPTON

WARWICK CASTLE

OAKHAM

CAMBRIDGE

RIVER CAM PUNTING



CAMBRIDGE

CATS College and CSVPA are located in the heart of the academic city of Cambridge, near the world famous King's and Trinity Colleges

CHELTFENHAM

BOURNEMOUTH

OXFORD

LONDON

CANTERBURY



LANDS END



BOURNEMOUTH

Bournemouth is a beautiful coastal resort town known for its sandy beaches and watersports. Our courses are based at the prestigious Bournemouth Collegiate School



LONDON

The capital of the UK and one of the most exciting and diverse cities of the world. Full of iconic sights, we run courses at the Guildhouse School in Bloomsbury and Brunel University in Uxbridge



CANTERBURY

Stafford House Canterbury is located in a safe, comfortable and historic university city, close to the beaches of the south coast and within easy reach of London



OAKHAM

Founded in 1584, Oakham School is located within the town centre and has established a reputation for academic and sporting excellence

WELCOME TO STUDY HOLIDAYS!

"I am delighted to present our 2024 brochure highlighting details of all our summer and year round courses for individuals and groups! After an amazing summer delivering a wide range of feature-packed courses that focus on our cornerstone values of excellent teaching, exciting activities, great facilities and a family atmosphere, we are gearing up for an even bigger year with new courses, centres and incredible 'Adventures in English' for 2024!"

Ruth Fenton, Director



This year sees the very exciting introduction of two new summer centres to our roster of locations. From 2024 onwards we will be offering courses at the Bosworth Independent School in Northampton in the UK. A sister school within the CATS Global Schools group, Bosworth is a prestigious school sitting on a beautiful 118 acres of grounds and will offer both IELTS Preparation and STEM & English courses to groups and individuals (see page 30).

In the USA we are pleased to announce the addition of San Francisco to our worldwide destinations. Our San Francisco centre will be run in conjunction with the esteemed UC Berkeley, with the campus centred in the unique and artistic town of Berkeley, offering stunning views of the San Francisco Bay. Offered to both groups and individuals the course will focus on exploring the beautiful Bay Area, with half day excursions to many of the iconic sites throughout the city (see page 42).

As well as our new centres we are also offering new courses for 2024, with Field Hockey available to groups at our Oakham centre, and new Individual courses in Bloomsbury and Boston, with Branding & Advertising and STEM & English (Bloomsbury - see page 22) and Photography, Film Making and the Young Professional Certificate (Boston - see page 34) bolstering our already exciting offering. 2024 is going to be a great year for an Adventure in English!



THE EXPERIENCE

Join the Stafford House Family.....	2
Student Welfare.....	4
Your Stafford House	5
Student Experience.....	6
Summer Course Options.....	8
Classic Plus Courses.....	10
What's on the Menu	11

OUR LOCATIONS

Bournemouth.....	12
Cambridge	14
Canterbury	16
Canterbury & Cambridge Academic Courses.....	18
Bloomsbury.....	20
Bloomsbury Academic Courses	22
Uxbridge.....	25
Oakham	26
Red Stars Football School.....	28
Northampton.....	30
Boston.....	32
Boston Academic & Arts Courses.....	34
Los Angeles.....	36
New York.....	38
New Haven.....	40
San Francisco.....	42
Tailored Groups All Year Round	44
Year Round Courses	46
Year Round Locations.....	48
CSVPA.....	50
Stafford House International	52
CATS Global School	54

JOIN THE STAFFORD HOUSE FAMILY!

Here at Stafford House Study Holidays we are all about the student experience.



EXPERIENCE THE WORLD

We have 12 great locations situated across the UK and USA for groups and individuals during both the summer and year round. Why not choose some of our specialty courses like Watersports or our Soccer School? We also provide an Academic Explorer programme for future Young Leaders, diving into case studies and intercultural communication. At Stafford House Study Holidays there is something for everyone!

A FUN, HOLISTIC APPROACH

Whether you choose a small town or big city location you will be fully immersed in an English-speaking environment, and be able to explore the things that you are most passionate about. Our Junior programmes provide daily English lessons as well as daily activities. Our excursions will give you the opportunity to go on historical adventures, marvel at famous landmarks and savour the excitement at incredible theme parks.

COMFORTABLE, SAFE ENVIRONMENT

A comfortable and creative environment helps you achieve your potential, and we choose the best centres to host our summer and year round programmes. We also take our food very seriously, ensuring all students have 3 healthy meals a day, including a hot lunch (packed lunches are also provided on excursions). A healthy and well fed student is one brimming with lots of positive energy and ability to learn more productively.

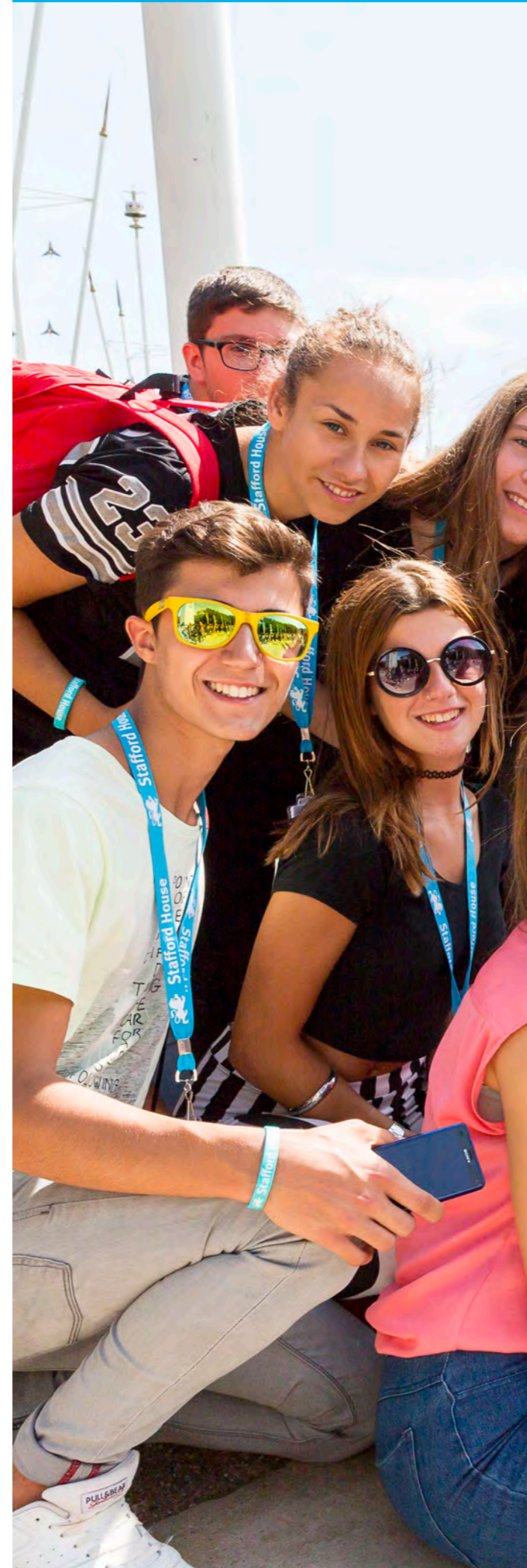
HEALTHY LEARNING

By ensuring we incorporate plenty of sports and physical activity into your daily routine we provide the opportunity to spend a lot of time outdoors enjoying nature, with various activities like Basketball, Adventure Activities and even Watersports in some of our centres! We also offer the opportunity for creative expression through our artistically inspired learning. Each centre has something unique to offer to meet everyone's demands.

BECOME IMMERSSED

With our social programme you can take part in dozens of exciting activities! Join in with a "Dragon's Den" style presentation, an International Party or maybe enter into one of our centre's talent shows. Each activity is an opportunity to meet with students hailing from over 50 countries around the world and a chance get to know their cultures and customs and make lifelong friendships along the way.

Make lifelong friends at Study Holidays!



BECOME A PART OF OUR PRIDE!

Our staff create an environment of happy and healthy experiences with a dedication to delivering the safest and most positive year round junior programmes.

PROGRESSIVE OUTLOOK

Stafford House Study Holidays is open and inclusive to everyone and in all our schools we ensure that students are treated equally and with respect, and in return treat others with the same approach.

DANCE INTO THE EVENING

We take our dancing very seriously at Stafford House Study Holidays and as such host various discos throughout each programme. Our disco evenings are a fun way for everyone to showcase their moves on the dance floor and simply let go! Dancing offers a wonderful opportunity for students to celebrate their hard work and achievements throughout the week. Everyone from our staff to the students is expected to put on their dancing shoes and go for it!

COMMUNITY

Our diverse nationality mix helps create an international community based on friendship and achievement. We know you will have the experience of a lifetime with the programme you choose, making Stafford House your home away from home for the summer or throughout the year!



STUDENT WELFARE

Our aim is to take exceptional care of each and every student that stays with us. Our centres and locations have all been selected for their safe and secure environments, and we offer high levels of supervision. We understand that you trust us to take care of your children and we take our responsibility very seriously.

STUDENT WELFARE OFFICERS

Our friendly, professional and well-trained teams of Student Welfare Officers are onsite to ensure that our students are supported in all aspects of school life. They will be on hand to provide help with our school hygiene procedures and will be able to assist if a student requires a visit to the nurse or doctor's appointment.

ONSITE NURSES*

Each of our residential centres in summer 2024 will have a nurse available onsite 3 days a week to assist students who are feeling unwell.

MEDICAL ROOM

If a student does begin to feel unwell during the school day a medical room will be available for them to isolate, relax and recuperate in a restful environment.

THOROUGH AND INFORMATIVE STUDENT INDUCTIONS

We want to make sure that each and every student that stays with us feels safe and secure in the school environment. Students will receive a warm welcome and thorough induction including information on how to stay safe during their stay.

SECURITY

Our schools have always been a safe haven for students and we have highly developed contingency plans in place in the unlikely event of an emergency. Our staff are fully trained in these procedures so students can always feel they are in safe hands whilst in the care of Stafford House.



Our friendly Welfare Officers are always on hand to support students in all aspects of school life

YOUR STUDY HOLIDAY

Our aim is to take exceptional care of each and every student that stays with us. Our centres and locations have all been selected for their safe and secure environments, and we offer high levels of supervision.

STUDENT WELFARE

We understand that you trust us to take care of your students and we take our responsibility very seriously. For this reason, we have [rules and procedures](#) in place for all our young students to ensure their safety and well-being, which is, of course, our top priority.

In addition, our 'team in pink' – our Student Welfare Officers – are at each centre, to ensure that all students have someone to look after them and to listen to them if they have any questions or need advice or support at any time. We are determined to provide the best possible experience for our students. From the moment they arrive and are greeted at the arrivals hall, we are there to guide and support them every step of the way to the moment we wave them goodbye.

Our English Language courses in the UK are accredited by The British Council. We are also founder members of Young Learners English UK, a group who are dedicated to ensuring excellence in all aspects of junior courses, especially student welfare.

A WIDE RANGE OF EXCITING ACTIVITIES

A variety of fun activities are available at each of our centres both during the day and in the evenings. Students can select from a mixture of sports, dance, drama and team games.

For those who prefer to be creative we offer a range of arts and crafts as well as drumming, carnival and circus workshops. The fun carries on into the evening when students are able to enjoy discos, talent shows, international nights and much more. Our activities provide the perfect opportunity for students to use the English that they have learnt with international friends.

SPECIALIST COURSES

We also offer specialist courses such as Michael Owen's Red Star Football School, World of Work courses and Classic PLUS courses ranging from horse riding to tennis, adventure activities to watersports!



TEACHING

Our aim is simple: to encourage students to use the language in realistic, cultural and fun situations. Each student will go home with a portfolio of their work along with tips and suggestions for further study. We activate student's knowledge and give them the confidence they need to communicate successfully.

A VARIETY OF GREAT EXCURSIONS

Our exclusive programme of excursions to historical, cultural and fun destinations is linked to motivating lessons that prepare students for visits to many of the UK and USA's most famous cities. We use major excursion destinations such as London, Cambridge and Oxford as a "classroom" where students are exposed to a wealth of history and culture through guided walking tours, educational materials and visits to museums, colleges, cathedrals and other attractions. Our carefully planned tours enable our students to visit famous landmarks and learn about the history and culture of the city. Additional attractions and excursions can be booked in advance (at extra cost).



School nurses are onsite at our residential centres

*All residential centres in the UK and Boston in the US have onsite medical provision.

STUDENT EXPERIENCE

Our staff create an environment of happy and healthy experiences with a dedication to delivering the safest and most positive year round junior programmes.



ARRIVAL

To keep all students safe, every student's parents must complete our "Parental Consent Form" and send it to us before the course begins. This includes medical and emergency contact information. All of our individual students will be met by a representative at the airport and taken to their chosen centre. Group students will also be met at the airport by a Stafford House representative and travel in the care of their nominated Group Leader.

When students arrive they will be given a lanyard to identify them as a Stafford House student – this will include their name, school address and the emergency phone number for the centre and our Head Office. This means that in an emergency students will be able to contact us 24 hours a day, 7 days week.

OUR TEAM

Our centre staff are carefully selected and trained to ensure they provide the very best care for students. All our staff are trained in child safeguarding and complete a British Council online course prior to arrival- we also have a Designated Safeguarding Person at each centre.

Our management teams (Centre Directors, Directors of Studies, Activities Managers and Welfare and Accommodation Managers) are there to make sure everything runs smoothly. Our teachers and Activity Leaders make sure that students learn lots of new words and phrases and use them in fun, creative, and safe ways.

Student Welfare Officers are often called our teams in pink- they are there to ensure that students have everything that they need to make their stay safe and comfortable and are always available to answer questions and provide support.

Group Leaders accompany our group students during their stay and are responsible for their students. They assist with all elements of student supervision. Throughout the day supervision is provided for all students and they are not permitted to leave the site without a staff member, Group Leader or authorised permission

LESSONS

Class size is a maximum of 16 and students are supervised by their class teacher.

Our 'Team in pink' Student Welfare Officers are at each of our centres



DAILY STUDENT SUPERVISION

All students will have a key adult who they know they can call on if they need any help. For our group students this will be their Group Leader. All individual students will be allocated a Stafford House member of staff on arrival. They will check in on the students at key points during each day and will be available to help with any questions or concerns.

NIGHT TIME

At the end of our evening activity our staff ensure that students return to their accommodation during lights out. A member of staff is then on night duty and is fully contactable, all students will know where to find them during this period if there is anything that they need.

FREE TIME AND MEAL TIMES

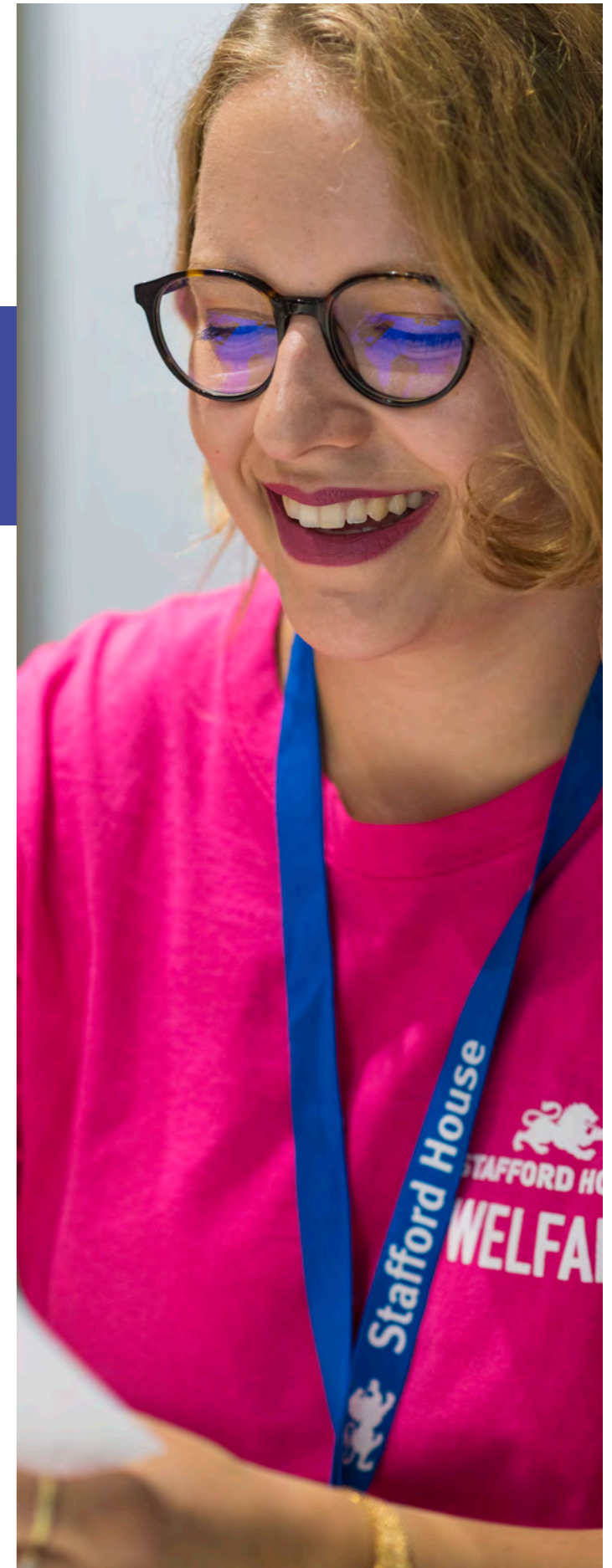
Group Leaders and Stafford House staff will supervise common areas and outdoor spaces and provide support as required. At centres where individual students are allowed unsupervised free time (with parental permission) they must follow our school rules, and return back on time to allow these permissions to continue. For students who do not follow these rules free time privileges will be withdrawn as per our student disciplinary procedure.

ACTIVITIES

Activities are compulsory for students (individual students 16 and over are able to negotiate free time with parental permission with centre management). Activities will be run and supervised by our staff with the assistance of our Group Leaders.

EXCURSIONS

Stafford House staff and Group Leaders will accompany students on all trips and visits. When appropriate to do so students will have the potential to be given some free time in small groups. This will depend on factors such as location, age, weather and how busy the area is. 8-11 year olds - no unaccompanied free time, 12-15 year olds - 1 hour of free time, 16 plus year olds 2 hours free time. A monitored meeting point will be arranged so students can return at any time.



For more information please see our school rules at: www.studyholidays.com/school-rules.htm

SUMMER COURSE OPTIONS

We offer a range of different courses to choose from during the summer months. For students wishing to gain a recognised qualification we offer Trinity GESE Speaking exams. Our Intensive course in Canterbury and The London Academic Explorer courses are the perfect choice for those keen to expand their knowledge and practise their skills. The London explorer programme provides an opportunity to get to know the UK's most popular city through walking tours, visits and lessons.



CLASSIC COURSE

AGE: 8-18* years for groups, 12-17 years for individuals (varies by centre)
DURATION: 1-3 weeks
ENGLISH LESSONS: 15 hours per week
LOCATION: Most of our centres

This course includes a full programme of English tuition, supervised excursions, sports and on-site activities such as arts and crafts, drama and evening activities.

- Maximum class size of 16 students
- 1 full-day plus 1 or 2 half-day excursions per week in the UK (for US centres, please refer to the centre pages)
- Themed lessons prepare students for excursions
- Full board accommodation, usually residential (homestay option in Canterbury)

EXPLORER COURSE

AGE: 12-18* years (London) for groups 14-17 years for individuals
DURATION: 1-3 weeks
ENGLISH LESSONS: 15 hours per week
LOCATION: London Bloomsbury

An exciting way to combine exploring London with an integrated programme of English Language lessons.

- Maximum class size 16 students
- 15 hours of English lessons
- 3 evening activities per week
- 4/5 half-day sightseeing tours per week around London
- 1 full-day excursion per week
- Transport Pass included

INTENSIVE ENGLISH

AGE: 14-17 years for groups and individuals
DURATION: 1-4 weeks
ENGLISH LESSONS: 23 hours per week
LOCATION: Canterbury

This course provides more classroom time for students to focus on their English Language knowledge and skills, as well as participating in supervised activities and excursions.

- Maximum class size of 16 students
- Evening social activities included
- 1 afternoon activity per week
- 1 full-day excursion per week

LONDON ACADEMIC EXPLORER

AGE: 14-17 years for small groups & individuals
DURATION: 2 weeks
ENGLISH LESSONS: 20 hours per week
LOCATION: London Bloomsbury
MINIMUM LEVEL: Pre-Intermediate

The Academic Explorer Programme is designed to have a dramatic effect on students' performance in English. Focusing on intercultural communicative success in English - with outcomes focused on the successful communication of group work objectives through the acquisition of presentation skills. Includes skills such as academic note-taking and spoken performance.

- Maximum class size of 15 students
- Excursions to Cambridge (including University visit) and Thorpe Park
- 4 half day tours per week around London tied in to learning objectives and 4 premium activities per week (all entrance fees included)
- Full board residential accommodation

TRINITY EXAMINATIONS COURSE

AGE: 8-18* years (varies by centre)
DURATION: 2-4 weeks
ENGLISH LESSONS: 15 hours per week plus 2 exam preparation sessions
LOCATION: All UK centres (groups only)

The Trinity GESE (Graded Examinations in Spoken English) examinations are an internationally recognised qualification and are ideal as a motivational end-focus for students. The supplement includes 2 lessons to help them understand what to expect during the exam and to help them with strategies to pass the exam. The exam will be taken during the final week of the course.

- Maximum class size of 16 students
- Lessons may replace some or part of the student's daily activities
- All learning materials will be provided and a formal Trinity College certificate will be issued to successful candidates

IELTS EXAM PREPARATION

AGE: 12-17 years for small groups & individuals
DURATION: 1 - 4 weeks
ENGLISH LESSONS: 23 hours per week
LOCATION: Northampton
MINIMUM LEVEL: Intermediate

The IELTS examination is an internationally recognised examination most commonly taken by students applying to study higher education courses taught in English. The course provides intensive exam preparation with a focus on the skills required for students to perform to their highest ability in this challenging exam. The course features a combination of language teaching, exam preparation and mock examinations. (Max class size 16, All learning materials will be provided, Information on booking an IELTS test during or at the end of the course is provided on application)



*18 year old students only accepted as part of a group where all students are returning to secondary education in September 2024. 18 year olds must follow all school rules as minors. Separate rules apply regarding lessons and activities, please enquire.



CLASSIC PLUS COURSES



We have a variety of Classic Plus courses throughout our centres offering students a full programme of English tuition with a host of exciting activities and excursions.

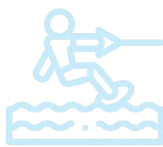
TENNIS



AGE: 8-17 years (groups)
12-17 years (individuals)
DURATION: 1-2 weeks
LOCATION: Oakham
COACHING: 9 hours per week
ENGLISH LEVEL: Elementary to Advanced
ABILITY LEVEL: Beginner to Advanced

Students will enjoy 9 hours per week of professional tennis coaching. The sessions will include technical development for all shots used in the game including groundstrokes, serve, return of serve and net play, together with an emphasis on the tactics and strategies required in match play, including court positioning for both singles and doubles matches.

WATERSPORTS



AGE: 12-17 years (groups only)
DURATION: 2 weeks (7 Jul - 11 Aug)
LOCATION: Bournemouth
COACHING: 6 hours per week
ENGLISH LEVEL: Elementary to Advanced
ABILITY LEVEL: Beginner (all students must be able to swim confidently)

This course is designed to enable students to build their confidence in the water while having fun. Students can enjoy the Aqua Park with its trampolines, slides, hurdles and 3 metre jumping points. They will also be able to try their hand at Kayak and SUPing and enjoy paddling around the tranquil freshwater lake. For those looking for more adventure Cable Wakeboarding or kneeboarding is available.

BASKETBALL



AGE: 12-17 years (groups), 14-17 (individuals)
DURATION: 2 weeks
LOCATION: Canterbury
COACHING: 9 hours per week
ENGLISH LEVEL: Elementary to Advanced
ABILITY LEVEL: Beginner to Advanced

We will provide students with 9 hours per week of basketball coaching by accredited coaches. The training will focus on all the skills and techniques used in the game, including dribbling, shooting, passing, court awareness and teamwork. Students are encouraged to practise and demonstrate what they have learnt, through competitive exercises, culminating in an exciting tournament each week.

ADVENTURE ACTIVITIES



AGE: 8-17 years (groups), 12-17 (individuals)
DURATION: 1-4 weeks
LOCATION: Oakham
COACHING: 9 hours per week
ENGLISH LEVEL: Pre-Intermediate to Advanced
ABILITY LEVEL: Beginner to Advanced

Students on this course will participate in an exciting range of activities based mainly in and around Rutland Water, a reservoir and nature reserve near to the school. Activities may include various types of watersports, horse riding, climbing, building rafts and emergency shelters, orienteering, and a guided cycle ride around Rutland Water.

HORSE RIDING



AGE: 8-17 years (groups), 12-17 (individuals)
DURATION: 1-4 weeks
LOCATION: Oakham
COACHING: 9 hours per week
ENGLISH LEVEL: Pre-Intermediate to Advanced
ABILITY LEVEL: Elementary to Advanced

Students will be taught how to groom horses, how to keep a horse and its stable clean, and how to use and handle riding equipment, as well as enjoying indoor and outdoor riding sessions with qualified instructors within the safe environment of the riding centre.

FIELD HOCKEY



AGE: 8-17 years (groups), 12-17 (individuals)
DURATION: 1-4 weeks
LOCATION: Oakham
COACHING: 9 hours per week
ENGLISH LEVEL: Pre-Intermediate to Advanced
ABILITY LEVEL: Elementary to Advanced

Students receive expert tuition in areas including passing, receiving, ball control and individual/team defence. Coaching sessions will focus on movement control, synchronization, and rhythm to develop skills before moving on to match practice. The course is taught entirely in English so students build confidence in both their hockey skills and in using language to communicate in team environments.

WHAT'S ON THE MENU?

We know how important food is for children and young people, especially when they are away from home. We always offer a good variety of food for each meal.

- For breakfast, there is a continental breakfast every day, including a cooked item or cold meat and cheese, and a hot breakfast at least once a week.
- For lunch and dinner, we provide hot meals with a choice of main courses, including a vegetarian option. We also ensure there is always a salad bar including cold protein items such as ham, egg or cheese.
- There is also fresh fruit and yoghurt available every day. For Saturdays and Sundays we provide a packed meal to facilitate excursions and activities.
- We are able to cater for different diets providing we have prior warning at the time of booking, such as coeliac, vegetarian, nut allergy and halal.
- All students are given something to eat when they arrive, no matter what the time is.

TYPICAL BREAKFAST

- Selection of cereals
- Toast and preserves
- Pancakes and maple syrup
- Boiled egg
- Natural yoghurt and fruit puree
- Cheese and turkey slices
- Fresh fruit
- Tea and coffee



TYPICAL LUNCH

- Minestrone soup (V)
- Barbecue chicken
- Pizza
- Spanish omelette (V)
- Broccoli
- Rice
- Sautéed courgettes
- Salad bar
- Fresh fruit and Yoghurt



TYPICAL DINNER

- Chicken soup
- Lasagne
- Fish and chips
- Tomato and basil quiche (V)
- Penne pasta
- French fries
- Cabbage and carrots
- Peas and corn
- Salad bar



Homestay Students always receive a hot lunch Monday to Friday, as well as the other meals provided by their host families.

BOURNEMOUTH COLLEGIATE SCHOOL

CLASSIC COURSE | CLASSIC PLUS: WATERSPORTS



Bournemouth Collegiate School is fantastically located and is just a 5-minute walk from the stunning beaches of Southbourne and 10 minutes from the centre of the town. With seven miles of golden sands and sparkling sea, the vibrant cosmopolitan town of Bournemouth has it all. It is possible to explore a vast variety of shops, restaurants, and endless beautiful countryside. The school is just a short distance from the New Forest, where ponies, cattle, and deer roam free.



Bournemouth Collegiate School has a wonderfully rich tradition, the building dates back to 1860 and the school, 1899



EXCURSIONS

One full-day excursion per week is included. Destinations may include London, Oxford or Bath. Two half-day excursions per week are included, destinations may include Winchester, New Forest Aqua Park or Salisbury. Optional Excursions can be booked to destinations such as Windsor Castle or Brighton.



ACCOMMODATION

Two types of residential accommodation are available. Our standard accommodation is located on the school campus and is made up of shared rooms with shared bathrooms. Our Premium single en-suite rooms are located just a short shuttle bus ride from the college. All students have hot lunch and hot dinner in the school canteen Mon-Fri.

QUICK INFO

 GROUPS ONLY	 AGES Standard Residence (onsite) 8 - 17 Ensuite Residence (offsite) 12 - 17
 ACCOMMODATION Residential	 HIGHLIGHT Bournemouth beaches
WHAT'S INCLUDED?	
 15 HOURS of English lessons	 1 FULL DAY Excursion per week
 7 EVENING ACTIVITIES per week	 2 HALF DAY Excursion per week



The school is just minutes from the glorious sandy beaches of Bournemouth



Extensive onsite facilities including an indoor swimming pool

BOURNEMOUTH SAMPLE PROGRAMME

	MORNING	AFTERNOON	EVENING
SUNDAY	Arrival, Induction & Campus Tour		Welcome Evening & Ice Breaker Activities
MONDAY	Placement Test & Induction Lesson	Walking Tour of Bournemouth	Welcome Disco or Drama-Based Games
TUESDAY	English Lessons	Included Half Day Excursion: New Forest Aqua Park	"Who Wants to be a Millionaire?" Quiz Night
WEDNESDAY	English Lessons	Football, Tennis or Arts & Crafts e.g. Jewellery Making	International Night
THURSDAY	English Lessons	Included Half Day Excursion: Winchester Tour (no entrance included)	Casino Night or English Conversation Club
FRIDAY	English Lessons	"Mini Olympics" Competition or Drumming Workshop	Beach Party Disco or Sports
SATURDAY	Included Full Day Excursion: London, Walking Tour & Thames Sightseeing Boat Cruise		Chill Out Evening including Films, Popcorn & Board Games
SUNDAY	Activities e.g. British Sports Day, or Sightseeing in Bournemouth, or Optional Full Day Excursion (at extra cost - please book before arrival) e.g. Windsor, Walking Tour & Windsor Castle		British Culture Evening
MONDAY	Local Visit: Seaside Visit	English Lessons	Fancy Dress Disco or Drama Workshop
TUESDAY	Included Half Day Excursion: Salisbury and Cathedral Visit	English Lessons	Game Show Night
WEDNESDAY	Football, Tennis or Arts & Crafts e.g. Jewellery Making	English Lessons	"Bournemouth's Got Talent!" Talent Show
THURSDAY	Included Half Day Excursion: Brownsea Island	English Lessons	Murder Mystery Activity
FRIDAY	"Tribal Wars" Competition or Arts & Crafts e.g. Mask Making	English Lessons	Masked Ball Disco or Sports
SATURDAY	Included Full Day Excursion: Oxford, Walking Tour & Christ Church College		Chill Out Evening including Films, Popcorn & Board Games
SUNDAY	Departure		

CATS CAMBRIDGE

CLASSIC COURSE | STEM & ENGLISH FOR SCIENCE



CATS College Cambridge is a leading sixth form college located in modern facilities in the academic city of Cambridge. The world famous Colleges of King's and Trinity are only a short walk away along the peaceful banks of the River Cam.



EXCURSIONS

One full-day excursion per week is included. Destinations may include London or Canterbury. One half-day excursion per week is included, destinations may include Ely, Bury St Edmunds or Stamford. Optional Excursions can be booked to destinations such as Oxford, Windsor Castle or Thorpe Park.



ACCOMMODATION

Two residences, both with high-quality single ensuite accommodation. Elizabeth House (premium residence) is on campus. Varsity House is a 17 minute walk away. Individual students stay at the Elizabeth House residence.

QUICK INFO

	GROUPS & INDIVIDUALS		AGES Groups: 12-18* Individuals: 14-17
	ACCOMMODATION Residential		HIGHLIGHT Punting

WHAT'S INCLUDED?

	15 HOURS of English lessons		1 FULL DAY Excursion per week
	7 EVENING ACTIVITIES per week		1 HALF DAY Excursion per week



CAMBRIDGE SAMPLE PROGRAMME

	MORNING	AFTERNOON	EVENING
SUNDAY	Arrival, Induction & Campus Tour		Welcome Evening & Ice Breaker Activities
MONDAY	Placement Test & Induction Lesson	Punting in Cambridge & City Walking Tour	Welcome Disco or Drama-Based Games
TUESDAY	English Lessons	Football, Tennis or Drumming Workshop	"Who Wants to be a Millionaire?" Quiz Night
WEDNESDAY	English Lessons	Included Half Day Excursion: Ely, Walking Tour & Cathedral	International Night
THURSDAY	English Lessons	Volleyball, Badminton or Arts & Crafts e.g. Jewellery Making	Casino Night or English Conversation Club
FRIDAY	English Lessons	"Mini Olympics" Competition or Circus Skills Workshop	Beach Party Disco or Sports
SATURDAY	Included Full Day Excursion: London, Walking Tour & Thames Sightseeing Boat Cruise		Chill Out Evening including Films, Popcorn & Board Games
SUNDAY	Activities e.g. British Sports Day, or Sightseeing in Cambridge, or Optional Full Day Excursion (at extra cost) e.g. Oxford, Walking Tour & Christ Church College		British Culture Evening
MONDAY	"Tribal Wars" Competition or Arts & Crafts e.g. Mask Making	English Lessons	Fancy Dress Disco or Arts & Crafts e.g. Graffiti Design
TUESDAY	Rugby, Basketball or Talent Show Preparation	English Lessons	Game Show Night
WEDNESDAY	Included Half Day Excursion: Bury St Edmunds Walking Tour*	English Lessons	"Cambridge's Got Talent!" Talent Show
THURSDAY	Baseball, Table Tennis or Drama Workshop	English Lessons	Murder Mystery Activity
FRIDAY	Local Visit: a Museum in Cambridge	English Lessons	Masked Ball Disco or Sports
SATURDAY	Included Full Day Excursion: Canterbury & Walking Tour		Chill Out Evening including Films, Popcorn & Board Games
SUNDAY	Departure		

STAFFORD HOUSE CANTERBURY

**CLASSIC COURSE | CLASSIC PLUS: BASKETBALL | INTENSIVE ENGLISH
MEDICINE | MODEL UNITED NATIONS**



Canterbury is a historic university city, close to the beaches of the south coast and within easy reach of London. Fun to explore and easy to walk around, Canterbury is a safe and comfortable place to study. Classes take place at Stafford House Canterbury, Worthgate School and Canterbury College.



Run in conjunction with
The Worthgate School
Canterbury see page
54 for more details



Learn English in the world famous Cathedral City



EXCURSIONS

One full-day excursion per week is included. Destinations may include London, Brighton or Cambridge. One half-day excursion per week is included, destinations may include Leeds Castle, Dover Castle or Chatham. Optional Excursions can be booked to destinations such as Oxford, Windsor Castle or Thorpe Park.



ACCOMMODATION

Full-board Residential and Homestay** (minimum age 12) options. Homestay accommodation is in shared rooms. Residential rooms have 1-4 beds, all with private bathrooms. All students have hot lunch and hot dinner in the school canteen Mon-Fri.

QUICK INFO

GROUPS & INDIVIDUALS		AGES Individuals: 14 - 17 Intensive English: 14 - 17 Groups in Residence: 11 - 18* Groups in Homestay: 12 - 18*
		ACCOMMODATION Residential & Homestay

WHAT'S INCLUDED?

15 HOURS of English lessons	OR	23 HOURS of Intensive English lessons
1 FULL DAY Excursion per week (All Courses)	1 HALF DAY Excursion per week (Classic Course)	
7 EVENING ACTIVITIES per week (All Courses)	2 LOCAL VISITS per week (Classic Course)	



Great facilities including onsite canteen



Situated at the modern and expansive Canterbury College

JUNIOR INTENSIVE COURSE SAMPLE PROGRAMME

	MORNING	AFTERNOON	EVENING
SUNDAY	Arrival and Local Orientation		
MONDAY	Placement Test & Induction Lesson	Walking Tour of Canterbury City	Welcome Evening & Ice Breaker Activities
TUESDAY	English Lessons	English Lessons	Welcome Disco or Drama-Based Games
WEDNESDAY	English Lessons	Sports or Local Visit to Canterbury Cathedral	International Night
THURSDAY	English Lessons	English Lessons	Beach Party Disco or Sports
FRIDAY	English Lessons	English Lessons	Casino Night or English Conversation Club
SATURDAY	Included Full Day Excursion: London, Brighton or Cambridge (no entrance included)		British Culture Evening
SUNDAY	Day in homestay or with Group Leader, or Sightseeing in Canterbury, or Optional Full Day Excursion (at extra cost - please book before arrival) e.g. Oxford & Christ Church College		Chill Out Evening including Films, Popcorn & Board Games

JUNIOR CLASSIC COURSE SAMPLE PROGRAMME***

	MORNING	AFTERNOON	EVENING
SUNDAY	Arrival and Local Orientation		
MONDAY	Placement Test & Induction Lesson	Walking Tour of Canterbury City	Welcome Evening & Ice Breaker Activities
TUESDAY	English Lessons	Included Half Day Excursion: Leeds Castle	Welcome Disco or Drama-Based Games
WEDNESDAY	English Lessons	Local Visit: Canterbury Cathedral	International Night
THURSDAY	English Lessons	Local Visit: St Augustine's Abbey	Beach Party Disco or Sports
FRIDAY	English Lessons	Sports	Casino Night or English Conversation Club
SATURDAY	Included Full Day Excursion: London, Brighton or Cambridge (no entrance included)		British Culture Evening
SUNDAY	Day in homestay or with Group Leader, Sports, on site activities or Sightseeing in Canterbury, or Optional Excursion (at extra cost - please book early) e.g. Thorpe Park		Chill Out Evening including Films, Popcorn & Board Games

*18 year old students only accepted as part of a group where all students are returning to secondary education in September 2024. 18 year olds must follow all school rules as minors.

Separate rules apply regarding lessons and activities, please enquire.

**Maximum length of stay in Homestay is 27 nights

***In week 2 lessons will be in the afternoon

CANTERBURY & CAMBRIDGE ACADEMIC COURSES



As well as our traditional Classic courses, our Canterbury centre also offers a number of Academic programmes for students wanting a specific focus for their summer studies. Run in partnership with The Worthgate School we offer Model United Nations and Medicine.



Run in conjunction with
The Worthgate School
Canterbury see page
54 for more details



MODEL UNITED NATIONS (CANTERBURY)

Our Model United Nations course provides a unique and exciting opportunity to explore the world of international affairs in an engaging and interactive way. Participants will build up a portfolio of work during the course by collating information regarding their assigned country, carrying out issue research, creating an opening speech and generating discussion points.

The course will look at a range of topical areas from the disciplines of history, politics, law, economics, geography, psychology and science - engaging students who have a wide range of interests. The course will include dynamic lessons, group work to discuss issues raised and build and develop viewpoints, as well as Independent study where students have time to build a portfolio and work on individual speeches. The course will also include educational visits such as a trip to a local university or the British Library for research. The programme will end with a final United Nations conference.

CAREERS IN MEDICINE (CANTERBURY)

For students who want to explore the different career options in Medicine. Learn about the huge variety of medical careers from nursing and neuroscience to psychology and physiotherapy. You will gain an understanding of university applications as well as the requirements needed for UKCAT and BMAT the medical school entrance exam.

The course will be delivered through a combination of lessons and practical workshops that will allow students to develop their theoretical knowledge and its associated practical applications. Lessons will cover themes such as disease, genetics, the immune system and how drugs effect the body. Participants will complete a first aid course and attend a laboratories and forensics workshop. The course will also include a Science Create Award Silver project which is designed to stretch students and enrich their STEM studies. Students will develop their own medical project idea and use their communication, problem solving and teamwork skills.

INTENSIVE ENGLISH (CANTERBURY)

This course includes 23 hours of English tuition. Students will take part in 15 hours of morning lessons each week which are divided into 3 hours per day. These will follow level-appropriate course materials that are carefully selected to engage students and allow them to improve their communicative skills. Afternoon lessons take the form of 2x 1-hour modules, which have been specially designed to encourage students to use their English in practical ways and develop the four skills even further. The first module will have a skills focus and may include options such as communicating clearly, language games and authentic listening and discussion. The second module allows students to really focus on what interests and inspires them, and past topics have included science and nature, musical English, discovering the UK, and drama and role play. Students are encouraged to select modules that will not only help them to improve their language skills but also develop their ability to collaborate with their classmates.

STEM & ENGLISH (CAMBRIDGE)

For students who are interested in how science, technology, engineering and mathematics can be used creatively to solve problems. Students combine STEM with English to improve their accuracy and fluency in an engaging environment. Develop the skills you need to be a world-class STEM professional. Think critically and work in teams to find solutions to real-world problems. Students will take part in lectures, workshops and science-based English lessons as well as visits to local places of relevant interest. Lectures will cover subjects such as a physics masterclass and will also feature guest lecturers. Potential workshops include topics such as Lego Robotics, rockets and combustion and coding. Students will also take part in practical lab-work demonstrations to put the theory into practice. Visit destinations may include the Science Museum, National Space Centre or Bletchley Park. English lessons will develop each of the four skills as well as knowledge of scientific vocabulary and grammar necessary to present their final projects in appropriate English.



QUICK INFO



AGES
14 - 17



GROUPS & INDIVIDUALS



ACCOMMODATION
Residential & Homestay*



HIGHLIGHT
Canterbury Cathedral

WHAT'S INCLUDED?



ACTIVITIES

We offer a variety of onsite evening activities including sports, discos and team games. Our activities provide opportunities for students to have fun and make international friends



EXCURSIONS

Excursions allow students to get to know the UK. Students will find historic and cultural information through guided walking tours and visits to places of interest



EDUCATIONAL VISITS

Our educational visits provide the perfect complement to lectures and workshops and give a real world perspective to our courses. They include tours relevant to course including the Science Museum, Bletchley Park and the British Library

* Homestay available to Intensive English in Canterbury only

GUILDHOUSE SCHOOL LONDON

CLASSIC COURSE | LONDON ACADEMIC EXPLORER | LONDON EXPLORER
BLOOMBERG BUSINESS ADVANTAGE | STEM & ENGLISH FOR SCIENCE | BRANDING & ADVERTISING

The Guildhouse London is a modern, well-equipped boarding school located in the heart of Central London in the district of Bloomsbury. The school boasts some of the finest teaching facilities in the capital city, whilst being within easy reach of all of the exciting attractions London has to offer.



Run in conjunction with the Guildhouse School London see page 54 for more details



Set in a beautiful Georgian townhouse in central London



EXCURSIONS

One full-day excursion per week is included. Destinations may include Cambridge, Brighton or Canterbury. Five half-day sightseeing tours around London are also included per week. Optional Excursions can be booked to destinations such as Oxford, Windsor Castle or Thorpe Park.

QUICK INFO			
GROUPS & INDIVIDUALS	AGES Individuals: 14 - 17 Groups (Residential ensuite): 12 - 17 (Residential non-ensuite): 12 - 18*	ACCOMMODATION Residential & Homestay	HIGHLIGHT London Museums
WHAT'S INCLUDED?			
15 HOURS of English lessons	1 FULL DAY Excursion per week	3 EVENING ACTIVITIES per week	2 SIGHTSEEING VISITS per week
TRAVEL CARDS INCLUDED			



ACCOMMODATION

Excellent en-suite accommodation is offered in two locations: Premier House (single and twin en-suite) a few steps away from the school, and Dinwiddy House (en-suite rooms in secure residential building) 2 underground stops away, near Kings Cross Station. Both options are modern and well equipped, with stylish communal areas featuring sofas, flat-screen TVs and pool tables. Homestay is also available.



The London Explorer course includes 5 sightseeing visits per week, allowing students to get a real taste for London



New for 2024 is our course in Branding & Advertising!

BLOOMSBURY LONDON EXPLORER SAMPLE PROGRAMME

	MORNING	AFTERNOON	EVENING
SUNDAY	Arrival, Induction & Local Orientation		Group Leader-Led Activities
MONDAY	Placement Test & Induction Lesson	Sightseeing Tour: Westminster area	Group Leader-Led Activities
TUESDAY	English Lessons	Visit: The British Museum	Sports in the Park
WEDNESDAY	English Lessons	Sightseeing Tour: The West End, Piccadilly Circus & Leicester Square	Group Leader-Led Activities
THURSDAY	English Lessons	Visit: London Science Museum	Casino Night or English Conversation Club
FRIDAY	English Lessons	Sightseeing Tour: Covent Garden	Beach Party Disco or Sports
SATURDAY	Included Full Day Excursion: Cambridge, Walking Tour & Kings College		Chill-out Evening including Films, Pop-corn & Board Games
SUNDAY	Group Leader-Led Activities, or Optional Full Day Excursion (at extra cost) e.g. Windsor, Walking Tour & Windsor Castle		Group Leader-Led Activities
MONDAY	Sightseeing Tour: Thames Walk, Tower of London & Tower Bridge (no entrance)	English Lessons	Group Leader-Led Activities
TUESDAY	Visit: The Natural History Museum	English Lessons	Quiz Night e.g. "Who Wants to be a Millionaire?"
WEDNESDAY	Sightseeing Tour: Buckingham Palace (no entrance) & Royal Parks	English Lessons	Group Leader-Led Activities
THURSDAY	Visit: Trafalgar Square & the National Gallery	English Lessons	Disco
FRIDAY	Sightseeing Tour: Oxford Street & Regent Street	English Lessons	Group Leader-Led Activities
SATURDAY	Included Full Day Excursion: Brighton Walking Tour & The Royal Pavilion		Team Games
SUNDAY	Departure		

LONDON ACADEMIC & ARTS COURSES



Our Bloomsbury centre offers a suite of exciting Academic Courses in collaboration with our sister school, Guildhouse London. Students will be able to participate in some of the most innovative and challenging courses we offer, all from a central London location.



BLOOMBERG BUSINESS ADVANTAGE

For students looking for a competitive edge in business, finance and economics and those who want to develop their business awareness, skills and experience. On this challenging course you will complete the Bloomberg Market Concepts certification (BMC), an eight module course that will give you a solid foundation on a Bloomberg Terminal used by investment bankers all over the world.

Using the Bloomberg Terminal computer software system, designed for professionals in the finance sector to monitor and analyse real-time financial market data- this course is a fantastic opportunity to work with this world-renowned system. Students will explore a variety of different elements of business including marketing, management and leadership and ethics. Students will use the Bloomberg Terminals to conduct their own research which they will collate and present to a panel of judges on the final day of their course. They also have the opportunity to gain the BMC qualification in using the terminals.

LONDON ACADEMIC EXPLORER

This is a demanding academic programme, focusing on intercultural communicative success in English, with outcomes focused on the successful communication of group work objectives through the acquisition of presentation skills. Half-day activities are tied in to learning objectives enabling learning outside the classroom to combine with exploring the great city of London.

- Project based format where students work in groups exclusively in English from breakfast to bed-time
- Focus on academic note-taking to prepare them for Higher Education in English
- Focus on spoken performance - skills to deliver success in later academic and professional life
- Focus on successful communication across cultures - making communication effective
- Students will leave with confidence about what they can achieve in English and a video record of their final presentation to take home to their families and schools

STEM & ENGLISH FOR SCIENCE

For students who are interested in how science, technology, engineering and mathematics (STEM) can be applied in the real world, using Central London as the platform! Students combine STEM with English to improve their accuracy and fluency in an engaging environment. Develop the skills you need to be a world-class STEM professional - thinking critically, working in teams, and linking theory with experimentation.

Students will take part in interactive lab-based lessons, demonstrations, and science-based English lessons as well as visits to local places of relevant interest based on themes represented in London, such as Film and Sport. Interactive Lab-Based lessons including a dissection, combustion of chemicals and designing a car. Visit destinations may include the Science Museum, Olympic Park and London Film Museum. English lessons will develop each of the four skills as well as knowledge of scientific vocabulary and grammar necessary to present their ideas in appropriate English.

BRANDING & ADVERTISING

Discover the exciting world of visual arts! You'll learn all about how visuals communicate messages and create stunning designs for logos, ads, and artistic direction.

You'll dive into essential topics like arranging elements on a page, picking colours that grab attention, and using fonts effectively. We'll explore how photos and drawings can tell compelling stories when combined. By the end, you'll have the tools to create convincing visuals that speak volumes.

You'll also become skilled at adapting to different tasks, whether it's making designs for paper, websites, phones, or even TV commercials. You're encouraged to explore various tools, from traditional pen-and-paper methods to the latest digital software. Your creativity will have no limits here—it'll be nurtured and celebrated.

All of this takes place in our CSVPA London Studio, putting you right in the heart of the UK's creative industry. As you study Visual Communication, Branding, Advertising, and Art Direction, you'll be surrounded by endless opportunities.



The brand new, state-of-the-art Bloomberg lab at Guildhouse London



QUICK INFO



AGES
14 - 17



GROUPS &
INDIVIDUALS



ACCOMMODATION
Residential



HIGHLIGHT
London Museums

WHAT'S INCLUDED?



ACTIVITIES

We offer a variety of onsite evening activities including sports, discos and team games. Our activities provide opportunities for students to have fun and make international friends



EXCURSIONS

Excursions allow students to get to know the UK. Students will find historic and cultural information through guided walking tours and visits to places of interest



EDUCATIONAL VISITS

Our educational visits provide the perfect complement to lectures and workshops and give a real world perspective to our courses. They include tours relevant to course including the British Museum, The Imperial War Museum, Bank of England and London Universities

UXBRIDGE BRUNEL UNIVERSITY

CLASSIC COURSE

Brunel University occupies a modern and spacious campus, 15 minutes' walk from the lively town of Uxbridge, West London. The campus has some of the finest sports facilities in the country – which often host world-class athletes, including the British, US and Jamaican athletics teams. All classrooms, leisure facilities and accommodation are of a very high standard. As well as a range of on-campus amenities, students benefit from their proximity to Central London, with all the major attractions being easily accessible by public transport.



EXCURSIONS

One full-day excursion per week is included. Destinations may include London sightseeing, Brighton or Cambridge. Two half-day excursions per week are included, destinations may include the Natural History Museum, Science Museum or Oxford. Optional Excursions can be booked to destinations such as Canterbury, Bath or Thorpe Park.

ACCOMMODATION

Residential accommodation onsite, with single en-suite rooms furnished to a high standard. Coin-operated laundry facilities are available. Sports facilities include two large sports halls, sports fields and tennis courts. WiFi is available onsite.

QUICK INFO

 **GROUPS ONLY**  **AGES 10-18***

 **ACCOMMODATION Residential**  **HIGHLIGHT London Museum**

WHAT'S INCLUDED?

 **15 HOURS** of English lessons  **1 FULL DAY** Excursion per week

 **7 EVENING ACTIVITIES** per week  **2 HALF DAY** Excursion per week



Based at the renowned Brunel University



World class sports facilities on campus

UXBRIDGE SAMPLE PROGRAMME

	MORNING	AFTERNOON	EVENING
SUNDAY	Arrival, Induction & Campus Tour		Welcome evening & Ice Breaker Activities
MONDAY	Placement Test & Induction Lesson	Walking Tour of Uxbridge Town & Shopping Centre	Welcome Disco or Drama based Games
TUESDAY	English Lessons	Included Half Day Excursion: Windsor Castle	"Who wants to be a Millionaire?" Quiz Night
WEDNESDAY	English Lessons	Football, Tennis or Drumming Workshop	International Night
THURSDAY	English Lessons	Included Half Day Excursion: London & The Science Museum	Casino Night or English Conversation Club
FRIDAY	English Lessons	"Mini Olympics" Competition or Arts & Crafts e.g. Jewellery Making	Beach Party Disco or Sports
SATURDAY	Included Full Day Excursion: London Sightseeing Walking Tour and Boat Cruise		Chill-out Evening including Films, Popcorn & Board Games
SUNDAY	Onsite Activities e.g. British Sports Day, or Shopping in Uxbridge, or Optional Full Day Excursion (at extra cost) e.g. Canterbury, Walking Tour & Canterbury Cathedral		British Culture Night
MONDAY	Volleyball, Badminton or Drama Workshop	English Lessons	Fancy Dress Disco or Arts & Crafts e.g. Graffiti Design
TUESDAY	Included Half Day Excursion: Oxford Walking Tour (no entrance included)	English Lessons	Game Show Night
WEDNESDAY	Rugby, Basketball or Talent Show Preparation	English Lessons	"Uxbridge's Got Talent!" Talent Show
THURSDAY	Included Half Day Excursion: London Natural History Museum	English Lessons	Murder Mystery Activity
FRIDAY	"Tribal Wars" Competition or Arts & Crafts e.g. Mask Making	English Lessons	Masked Ball Disco or Sports
SATURDAY	Included Full Day Excursion: Brighton, Walking Tour & The Royal Pavilion		Chill Out Evening including Films, Popcorn & Board Games
SUNDAY	Departure		

*18 year old students only accepted as part of a group where all students are returning to secondary education in September 2024. 18 year olds must follow all school rules as minors. Separate rules apply regarding lessons and activities, please enquire.

OAKHAM SCHOOL

CLASSIC COURSE | RED STARS FOOTBALL SCHOOL | CLASSIC PLUS: ADVENTURE ACTIVITIES
CLASSIC PLUS: HORSE RIDING | CLASSIC PLUS: TENNIS | CLASSIC PLUS: HOCKEY



Founded in 1584, Oakham School has established a reputation for academic and sporting excellence. The school buildings are located in very attractive surroundings around the town centre. Oakham itself is a beautiful market town in the countryside, near Cambridge and close to a fantastic reservoir for watersports.



EXCURSIONS

One full-day excursion per week is included. Destinations may include London, Cambridge or Warwick Castle. Two half-day excursions per week are included, destinations may include Stamford, Rutland Water, Belton House or Peterborough. Optional Excursions can be booked to destinations such as Oxford, Birmingham or Alton Towers.

QUICK INFO			
	GROUPS & INDIVIDUALS		AGES Groups: 8 - 17 Individuals: 12 - 17 Red Stars: 10 - 17
	ACCOMMODATION Residential		HIGHLIGHT London and Cambridge visits
WHAT'S INCLUDED?			
	15 HOURS of English lessons		1 FULL DAY Excursion per week
	7 EVENING ACTIVITIES per week		2 HALF DAY Excursion per week



ACCOMMODATION

Residential accommodation is onsite, in small boarding houses. Most rooms are singles, twins or small dormitories with shared bathroom facilities. Most houses have their own individual common room; others have use of a shared room with television, as well as laundry facilities and WiFi. Sports facilities onsite include an indoor swimming pool, sports hall, tennis courts and sports fields.



Oakham features extensive onsite sporting facilities



Onsite canteen available for all meals

OAKHAM SAMPLE PROGRAMME

	MORNING	AFTERNOON	EVENING
SUNDAY	Arrival, Induction & Campus Tour		Welcome Evening & Ice Breaker Activities
MONDAY	Placement Test & Induction Lesson	Walking Tour of Oakham Town	Welcome Disco or Arts & Crafts e.g. Jewellery Making
TUESDAY	English Lessons	Included Half Day Excursion: Stamford Walking Tour (no entrance included)	"Who wants to be a Millionaire?" Quiz Night
WEDNESDAY	English Lessons	Football, Tennis or Drama Workshop	International Night
THURSDAY	English Lessons	Included Half Day Excursion: Rutland Water (Raft Building Activity)	Casino Night or English Conversation Club
FRIDAY	English Lessons	"Mini Olympics" Competition or Drumming Workshop	Beach Party Disco or Sports
SATURDAY	Included Full Day Excursion: London Walking Tour		Chill-out Evening including Films, Popcorn & Board Games
SUNDAY	Onsite Activities e.g. British Sports Day, or Sightseeing in Oakham, or Optional Full Day Excursion (at extra cost) e.g. Warwick Castle, Walking Tour & Christ Church College		British Culture Evening
MONDAY	Local Visit: Oakham Castle or Rutland County Museum	English Lessons	Fancy Dress Disco or Arts & Crafts e.g. Graffiti Design
TUESDAY	Included Half Day Excursion: Belton House	English Lessons	Game show Night
WEDNESDAY	Rugby, Basketball or Talent Show Preparation	English Lessons	"Oakham's Got Talent!" Talent Show
THURSDAY	Included Half Day Excursion: Peterborough & Peterborough Cathedral	English Lessons	Murder Mystery Activity
FRIDAY	"Tribal Wars" Competition or Arts & Crafts e.g. Mask Making	English Lessons	Masked Ball Disco or Sports
SATURDAY	Included Full Day Excursion: Cambridge, Walking Tour & Kings College		Chill Out Evening including Films, Popcorn & Board Games
SUNDAY	Departure		

MICHAEL OWEN'S RED STARS FOOTBALL SCHOOL



This unique course includes coaching and interaction with some of the stars of world football! Open to students of all abilities and fans of all clubs this course includes a full-day excursion to the iconic Arsenal Emirates Stadium in London, a free kit pack including socks, shorts and shirts as well as a personalised drinks bottle. Students experience individual sessions with Mark Wright, former Liverpool and England defender.

COACHED BY EX-INTERNATIONAL PLAYERS

The 15 hour per week coaching programme has been written exclusively for Stafford House Study Holidays by football legend Michael Owen and will be overseen by ex-Liverpool Captain and England International Mark Wright, alongside other fully qualified and experienced coaches.

THE COURSE FEATURES:

- This programme gives students an opportunity to improve their football skills under the guidance of specialist Red Star football coaches.
- Coaching sessions are carried out by specialist coaches working directly with three groups of players: Level 1, Level 2 and Level 3 in order to maximise the potential of all players.
- Individual sessions with Mark Wright, former Liverpool and England defender.



Ex-England International, Mark Wright, coaches the course

RED STARS FOOTBALL SAMPLE PROGRAMME

	MORNING	AFTERNOON	EVENING
SUNDAY	Arrival and Local Orientation		Welcome Evening & Ice Breaker Activities
MONDAY	Soccer Coaching	Placement Test & Induction Lesson Walking Tour of Oakham Town	Welcome Disco or Drama-based Games
TUESDAY	Soccer Coaching	English Lessons	"Who wants to be a Millionaire?" Quiz Night
WEDNESDAY	Soccer Coaching	English Lessons	International Night
THURSDAY	Soccer Coaching	English Lessons	Casino Night or English Conversation Club
FRIDAY	Soccer Coaching	English Lessons	Beach Party Disco or Sports
SATURDAY	Included Full Day Excursion: London, Walking Tour & Arsenal Emirates Stadium Tour		Chill-out Evening including Films, Popcorn & Board Games
SUNDAY	Onsite Activities e.g. British Sports Day, or Optional Full Day Excursion (at extra cost)		British Culture Evening
MONDAY	Soccer Coaching	English Lessons	Fancy Dress Disco or Arts & Crafts e.g. Graffiti Design
TUESDAY	Soccer Coaching	English Lessons	Game show Night
WEDNESDAY	Soccer Coaching	English Lessons	"Oakham's Got Talent!" Talent Show
THURSDAY	Soccer Coaching	English Lessons	Murder Mystery Activity
FRIDAY	Soccer Coaching	English Lessons	Masked Ball Disco or Sports
SATURDAY	Included Full Day Excursion: Cambridge, Walking Tour & Kings College		Chill Out Evening including Films, Popcorn & Board Games
SUNDAY	Departure		

COACHED BY THE VERY BEST!

- Two sets of kit provided to each student including socks, shorts and shirts as well as a personalised drinks bottle.
- All activities will focus on commitment, work ethic, attitude, listening, technical improvement and fun!
- Full personal assessment of each player including speed, fitness and technical ability tests will be carried out.
- An individual and bespoke video will be given to each player at the end of the course. The video will feature the coach talking to the player and providing their assessment of the player's strengths and weaknesses as well as giving suggested practice drills and areas for continued improvement.
- The end of course presentation event will include four signed shirts from Michael Owen along with associated trophies.

THE LANGUAGE COURSE

- Tuition will focus on spoken communication and will be based on a syllabus especially designed for those with an interest in football.
- Dedicated lesson materials will be used for communicating with players, coaching staff, journalists, agents and fans.
- Lessons will cover vocabulary for use on the pitch and in commentaries.
- In addition to formal language input, the course will involve pair and group work as well as role plays and opportunities to use the language practically.

AGE: 8-17 years for groups, 10-17 years for individuals
DURATION: 2 weeks - open to boys and girls
LOCATION: Oakham
LESSONS: 15 hours of English lessons per week based around football
COACHING: 15 hours of football coaching per week



BOSWORTH INDEPENDENT SCHOOL

STEM | IELTS PREPARATION











The Bosworth Independent School is a prestigious public school founded in 1897 and located in Northampton. The 'School of Princes' makes a real impact with the beautiful Newton Building opposite an 118 acre open space containing football pitches, basketball courts, tennis courts, athletics track and many other sporting facilities. The school has onsite accommodation making it an ideal summer centre. Northampton is the perfect combination of bustling urban life and peaceful countryside - you'll be studying at the centre of the heart of England.



Bosworth Independent School
Run in conjunction with Bosworth Independent school, see page 54 for more details



The Newton Building

QUICK INFO			
	GROUPS & INDIVIDUALS		AGES Groups: 14 - 17 Individuals: 14 - 17
	ACCOMMODATION Residential		HIGHLIGHT London and Cambridge visits
WHAT'S INCLUDED?			
	15 HOURS of English lessons		1 FULL DAY Excursion per week
	7 EVENING ACTIVITIES per week		2 HALF DAY Excursion per week



EXCURSIONS

One full-day excursion per week is included. Destinations may include London, Cambridge or Oxford. Two half-day excursions per week are included, destinations may include Warwick Castle, Bletchley Park, Bicester Village or Stratford-Upon-Avon.

ACCOMMODATION

Residential accommodation is onsite in one of six boarding houses. All houses have an outside area, laundry facilities, a shared kitchen and common room. There are a variety of single and shared rooms in all residences, with shared bathrooms.



Bosworth school features excellent facilities throughout



Onsite canteen available for all meals

NORTHAMPTON SAMPLE PROGRAMME*

	MORNING	AFTERNOON	EVENING
SUNDAY	Arrival, Induction & Campus Tour		Welcome Evening & Ice Breaker Activities
MONDAY	Lessons	Lessons	Welcome Disco or Drama Based Games
TUESDAY	Lessons	Included Half Day Excursion: Warwick Castle	"Who wants to be a Millionaire?" Quiz Night
WEDNESDAY	Lessons	Lessons	International Night
THURSDAY	Lessons	Included Half Day Excursion: National Museum of Computing : Bletchley Park	Casino Night or English Conversation Club
FRIDAY	Lessons	Lessons	Beach Party Disco or Sports
SATURDAY	Included Full Day Excursion: London Walking Tour		Chill-out Evening including Films, Popcorn & Board Games
SUNDAY	Onsite Activities e.g. British Sports Day, or Sightseeing in Northampton		British Culture Evening
MONDAY	Lessons	Lessons	Fancy Dress Disco or Arts & Crafts e.g. Graffiti Design
TUESDAY	Lessons	Included Half Day Excursion: Bicester Village	Game show Night
WEDNESDAY	Lessons	Lessons	"Bosworth's Got Talent!" Talent Show
THURSDAY	Lessons	Included Half Day Excursion: Stratford-Upon-Avon- Shakespeare's Birthplace	Murder Mystery Activity
FRIDAY	Lessons	Lessons	Masked Ball Disco or Sports
SATURDAY	Included Full Day Excursion: Cambridge, Walking Tour & Kings College or Oxford		Chill Out Evening including Films, Popcorn & Board Games
SUNDAY	Departure		

*Lessons will be either IELTS Preparation or STEM depending on the course chosen

CATS ACADEMY BOSTON

CLASSIC COURSE | IVY LEAGUE PROGRAMME | STEAM | CODING COURSE | PHOTOGRAPHY
ILLUSTRATION & COMICS | FASHION | FILM MAKING | YOUNG PROFESSIONAL CERTIFICATE

CATS Academy Boston is a leading high school located on a new campus in the leafy suburb of Braintree. It is located just 10 miles from downtown Boston and 10 miles from the beach! Boston is the capital city of Massachusetts and one of the oldest cities in the United States, founded in 1630. Boston is an international centre of higher education, featuring prestigious institutions such as Harvard University and MIT, and over 250,000 students from all over the world study here.



EXCURSIONS

One full day excursion per week is included. Destinations may include Six Flags Theme Park, Cape Cod & Provincetown. Three half day excursions per week are also included, destinations may include Boston Freedom Trail, Harvard University, Boston Science Museum, New England Aquarium and a beach trip. Optional excursions can also be booked to destinations such as New York.



ACCOMMODATION

Residential accommodation onsite in new, modern, air-conditioned single en-suite bedrooms. There are common rooms, computer rooms and modern study facilities, as well as WiFi available in all buildings. Coin-operated laundry facilities are available.

QUICK INFO



GROUPS & INDIVIDUALS



AGES
Groups: 9-18*
Individuals: 12-18*



ACCOMMODATION
Residential



HIGHLIGHT
Harvard University

WHAT'S INCLUDED?



15
HOURS
of English lessons



1
FULL DAY
Excursion
per week



7
EVENING
ACTIVITIES
per week



3
HALF DAY
Excursion
per week



The campus is packed with excellent facilities



Our activity programme showcases the best of Boston, the capital of Massachusetts

BOSTON SAMPLE PROGRAMME

	MORNING	AFTERNOON	EVENING
SUNDAY	Arrival and Local Orientation		Movie Night & Gym Night
MONDAY	Placement Test & Induction Lesson	On Campus Activities: Sports, Arts & Crafts, American University Presentations	Welcome Party: Team Building/Name Games
TUESDAY	English Lessons	Boston Harbor Cruise & Tour	Halloween Party
WEDNESDAY	English Lessons	Harvard Tour	Jeopardy Quiz Night
THURSDAY	English Lessons	Included Half Day Excursion: Boston Freedom Trail Tour & Quincy Market	Karaoke Night
FRIDAY	English Lessons	Included Half Day Excursion: Newbury Street Tour	Neon Disco Party
SATURDAY	Included Full Day Excursion: Newport, Rhode Island		Gym Night/Board Games/Arts & Crafts
SUNDAY	Local Mall Shuttles/Gym/Arts & Crafts		Movie Night
MONDAY	English Lessons	On campus Activities: Sports, Arts & Crafts, American High School Presentations	Welcome Party: Team Building/Name Games
TUESDAY	English Lessons	Premium Outlets Shopping at Wrentham	Mardi Gras Party
WEDNESDAY	English Lessons	Included Half Day Excursion: MIT Tour	Minute To Win It Competition
THURSDAY	English Lessons	Included Half Day Excursion: Boston Science Museum	International Night
FRIDAY	English Lessons	Included Half Day Excursion: Salem & Witch Hunt Museum	Hawaiian Disco Party
SATURDAY	Included Full Day Excursion: Canobie Lake		Gym Night/Board Games/Arts & Crafts
SUNDAY	Departure		

*18 year old students only accepted as part of a group where all students are returning to secondary education in September 2024. 18 year olds must follow all school rules as minors. Separate rules apply regarding lessons and activities, please enquire.

BOSTON ACADEMIC & ARTS COURSES



Study Holidays offers a number of academic and arts courses for individual students at our sister school CATS Academy Boston. It combines the experience and values of a traditional American boarding school with a new, state-of-the-art campus. The main building offers outstanding spaces to develop and nurture creative independent thinking. The campus covers more than 20 acres and features: 43 classrooms including 6 language labs, 6 wet and 3 dry science labs, 7 music rooms, 3 art studios, an experimental theatre space known as the 'Black-Box', a large study area and student lounge, a business lab and a fashion lab.



STEAM COURSE

Explore ideas, experiment with materials, and build your own devices in the CATS Innovation Lab on campus such as robots, wearable technology and rockets. At CATS Academy, the city of Boston will be an extension of your classroom. You will meet local artisans, engineers, scientists and entrepreneurs to enhance your learning. This program will inspire you to apply your knowledge of Science, Technology, Engineering, Arts and Math.

IVY LEAGUE PREPARATION

If you are looking to understand the exciting variety of undergraduate options available in the US, this program is the one for you.

Hands on practice for entrance exams, confidence training and practical paperwork knowledge will give you the edge needed to obtain admission to a top university.

Come and join us this summer to start your journey to your dream school!

CODING COURSE

For students who have a natural curiosity about the world and an interest in modern technology and applications.

Explore ideas, experiment with materials, and build your own devices while on field trips and on campus. You will also meet local artisans, engineers, scientists, and entrepreneurs, whilst exploring the city of Boston.

YOUNG PROFESSIONAL CERTIFICATE

An engaging orientation to the professional world for young aspiring professionals. Through a mixture of lectures and case studies, our students learn to apply key marketing concepts and analytical tools such as the marketing mix, customer profiling and consumer behaviour, and investigate topics such as Corporate Social Responsibility. Through project work students develop communication skills in teamwork and presentations that will prepare them for professional success.

ILLUSTRATION & COMICS

For students who want to apply their drawing talents to the art of comic book storytelling.

You will gain an understanding of effective visual storytelling techniques as well as best practices for the comic creation process. Using traditional materials such as pencil and ink, you will create a visual narrative accompanied by a written script.

TEXTILES & FASHION DESIGN

This program is for artists looking to contribute to the ever-evolving fashion world. Students will discuss trends and the future of fashion, from gender and sustainability to materiality, and learn to apply those concepts to the design and creation of a finished garment—to add to their portfolio—or better yet, their wardrobe.

PHOTOGRAPHY

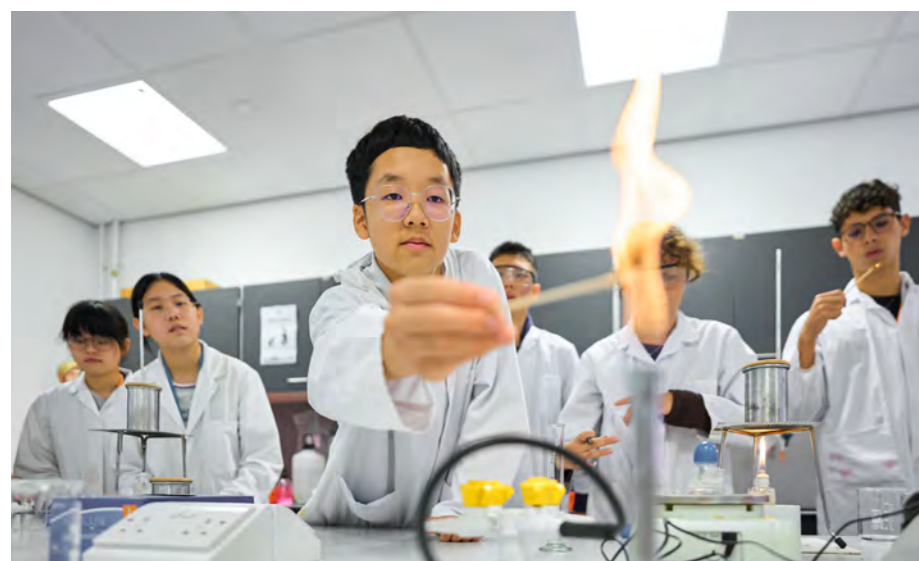
For students looking to improve their photography and photo manipulation skills. You will use Boston as your inspiration to create an image portfolio.

You will learn how to use different cameras and settings for the best effect. During the digital photography component you will learn to manipulate and print digital images on a computer before printing electronically.

FILM MAKING

This program is specifically designed for students looking to improve their videography and film making skills.

It will give students real insight into many aspects of cinematography and the world of film. Whilst being fun and informative, students will leave with a real sense of achievement as the course culminates in the screening of their own films created on the course.



QUICK INFO



AGES
14 - 18



GROUPS & INDIVIDUALS



ACCOMMODATION
Residential



HIGHLIGHT
Harvard University

WHAT'S INCLUDED?



ACTIVITIES

We offer a variety of onsite evening activities including sports, discos and team games. Our activities provide opportunities for students to have fun and make international friends



EXCURSIONS

Excursions allow students to get to know the USA. Students will find historic and cultural information through guided walking tours and visits to places of interest



EDUCATIONAL VISITS

Our educational visits provide the perfect complement to lectures and workshops and give a real world perspective to our courses. They include tours relevant to course including the Harvard Museum of Natural History, Harvard University and MIT

CALIFORNIA STATE UNIVERSITY

CLASSIC COURSE



Located at the famous California State University, the Channel Islands Campus is situated in Camarillo in California, just an hour from downtown Los Angeles and only half an hour away from Malibu and the beautiful golden sands of Zuma Beach. Each week is packed with excursions to the city centre and surrounding areas.



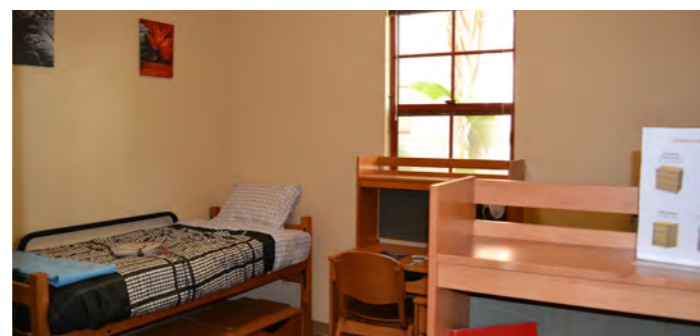
Located at the beautiful CSU

QUICK INFO			
	GROUPS ONLY		AGES Groups: 13 - 18*
	ACCOMMODATION Residential		HIGHLIGHT Hollywood
WHAT'S INCLUDED?			
	15 HOURS of English lessons		3 FULL DAY Excursion per week
	7 EVENING ACTIVITIES per week		1 HALF DAY Excursion per week



EXCURSIONS

Three full day excursions per week, destinations may include Downtown LA, Getty Museum & The Grove, Six Flags Theme Park, Beverley Hills & Hollywood, Venice Beach & Santa Monica or Santa Barbara. One half day excursion per week is also included, which may include Malibu Zuma Beach, Camarillo Outlets or Port Hueneme Beach.



ACCOMMODATION

Santa Cruz Residence: The rooms feature twin beds. There are 2 rooms in each suite unit and each suite has one bathroom. Bathroom/Student ratio: 1:4.



Onsite swimming pool



Explore the City of Angels, Beverley Hills, Hollywood, Zuma Beach, Santa Monica and much more!

LOS ANGELES SAMPLE PROGRAMME

	MORNING	AFTERNOON	EVENING
SUNDAY	Arrival and Local Orientation		
MONDAY	Placement Test & Campus Tour	Included Half Day Excursion: Malibu Zuma Beach	Sunset Hike
TUESDAY	Included Full Day Excursion: Downtown LA & The Griffith Observatory		Ice Cream Social
WEDNESDAY	English Lessons	English Lessons	Scavenger Hunt
THURSDAY	Included Full Day Excursion: Getty Museum & The Grove		Evening Activity on Campus
FRIDAY	English Lessons	English Lessons	Soccer & Volleyball
SATURDAY	Included Full Day Excursion		Movie Night
SUNDAY	Included Full Day Excursion: Beverley Hills & Hollywood Walk of Fame		Dinner at Hard Rock Cafe
MONDAY	English Lessons	Included Half Day Excursion: Camarillo Shopping Outlets	Swimming On Campus
TUESDAY	Included Full Day Excursion: Venice Beach & Santa Monica		Photography Challenge Hike
WEDNESDAY	English Lessons	English Lessons	Soccer & Volleyball
THURSDAY	Included Full Day Excursion: Santa Barbara		Movie Night
FRIDAY	English Lessons	English Lessons	Music Party
SATURDAY	Departure		

*18 year old students only accepted as part of a group where all students are returning to secondary education in September 2024. 18 year olds must follow all school rules as minors. Separate rules apply regarding lessons and activities, please enquire.

NEW YORK WAGNER COLLEGE

CLASSIC COURSE



Wagner College campus is located in Staten Island, from where students can enjoy stunning views of Manhattan's skyline. From the campus a 20-minute free ferry ride will take students to Wall Street. The campus features a state-of-the-art computer lab, a Starbucks coffee bar, a cafeteria and a beautiful library. Sports facilities include tennis courts, sports hall and fields.












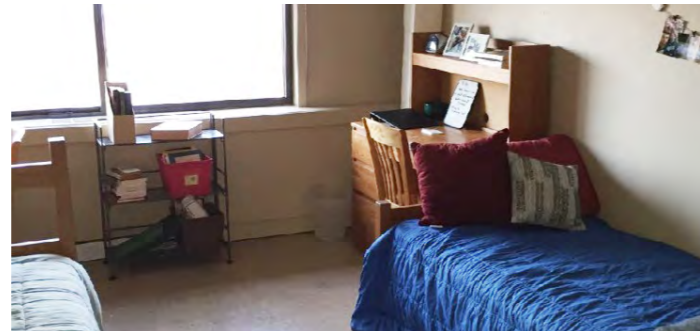
Located at the lush Wagner College campus in Staten Island



EXCURSIONS

One full-day and five half-day excursions per week are included. Destinations may include the Rockefeller Center, St Patrick Cathedral, City Hall, Brooklyn Bridge Park and Promenade, Battery Park, Wall Street (Memorial & Museum), Central Park & Top of The Rock, Union Square, East Village, Little Italy, Chinatown, Empire State Building, Grand Central Station, Times Square & Broadway, Staten Island Mall, MoMa and Harlem.

QUICK INFO			
	GROUPS ONLY		AGES Groups: 12- 18*
	ACCOMMODATION Residential		HIGHLIGHT Empire State Building
WHAT'S INCLUDED?			
	15 HOURS of English lessons		1 FULL DAY Excursion per week
	1 EVENING ACTIVITIES per week		5 HALF DAY Excursion per week
METRO CARD AND CITY PASS INCLUDED 			



ACCOMMODATION

Residential accommodation onsite offering mini apartments featuring two twin rooms. Each mini apartment has 1 bathroom for a ratio of 4 students per bathroom. There are common rooms and modern study facilities, as well as WiFi available in all buildings. Coin-operated laundry facilities are available.



Onsite cafeteria



The campus includes excellent facilities including a sports hall

NEW YORK SAMPLE PROGRAMME

	MORNING	AFTERNOON	EVENING
SUNDAY	Arrival, Induction & Campus Tour		Free Evening
MONDAY	Orientation, testing and campus tour	Empire State Building, Broadway, Times Square	Dinner in the city
TUESDAY	English Lessons	Battery Park, Wall Street, Trinity Church, Ground Zero, 9/11 Memorial	Dinner in the city
WEDNESDAY	English Lessons	Staten Island Mall	Dinner in the city
THURSDAY	English Lessons	City Hall, Brooklyn Bridge Park, Brooklyn Promenade, Montague Street	Dinner in the city
FRIDAY	English Lessons	Metropolitan Museum, Midtown	Dinner in the city
SATURDAY	Included Full Day Excursion: Ellis Island, Statue of Liberty		Dinner in the city
SUNDAY	Included Full Day Excursion: Museum of Natural History, Central Park		Dinner in the city
MONDAY	English Lessons	Union Square, The Highline, Chelsea Market	Dinner in the city
TUESDAY	English Lessons	Top of the Rock, Rockefeller Centre, St.Patrick's Cathedral, 5th Avenue	Dinner in the city
WEDNESDAY	English Lessons	Metropolitan Museum of Art	Dinner in the city
THURSDAY	English Lessons	East Village, Little Italy, Chinatown	Dinner in the city
FRIDAY	English Lessons	Midtown, Final Shopping	Dinner in the city
SATURDAY	Departure		

*18 year old students only accepted as part of a group where all students are returning to secondary education in September 2024. 18 year olds must follow all school rules as minors. Separate rules apply regarding lessons and activities, please enquire.

YALE UNIVERSITY

CLASSIC COURSE



This centre is based at one of America's most prestigious Ivy League universities. Founded in 1701, Yale University's 260-acre campus offers a peaceful and well-equipped environment for study. With its Gothic-style buildings, historic libraries and wide green lawns, Yale University provides students with the ideal location for their study holiday. This university campus forms the heart of New Haven, a bustling and historic city situated mid-way between Boston and New York.

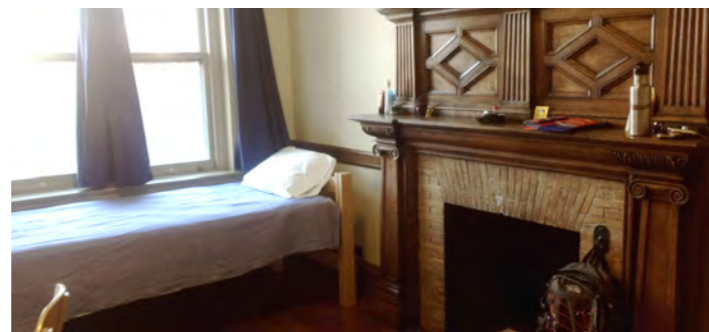


Located at the beautiful and prestigious Yale University campus



EXCURSIONS

One full day excursion per week is included. Destinations may include Boston, New York and Six Flags Theme Park. Three half day excursions per week are also included, destinations may include the Yale Planetarium, Yale Gallery, CT Science Center, Clinton Crossing Outlets, Stamford Mall or Brownstone Park.



ACCOMMODATION

Residential accommodation onsite in one of the colleges of Yale University, housing single and twin rooms with shared bathroom facilities and cosy communal areas. Coin-operated laundry facilities are available. There is a computer room onsite, as well as WiFi available. Sports facilities onsite include an indoor swimming pool, sports hall, basketball courts and sports fields.

QUICK INFO



GROUPS & INDIVIDUALS



AGES
Groups: 13-17
Individuals: 14-17



ACCOMMODATION
Residential



HIGHLIGHT
New York and Boston

WHAT'S INCLUDED?



15 HOURS
of English lessons



1 FULL DAY
Excursion per week



7 EVENING
ACTIVITIES
per week



3 HALF DAY
Excursion per week



The 260-acre campus is the perfect location for a study holiday



Study at one of the U.S' highest ranked universities

NEW HAVEN SAMPLE PROGRAMME

	MORNING	AFTERNOON	EVENING
SUNDAY	Arrival and Local Orientation		
MONDAY	Placement Test & Induction Lesson	"Flight" Trampoline Park	Welcome Party: Team Building/Name Games
TUESDAY	English Lessons	Cultural Workshops then Yale Art Gallery or Sports & Games	Halloween Party
WEDNESDAY	English Lessons	Kayaking, Paddle Boarding, Biking (dinner out; late return)	
THURSDAY	English Lessons	Cultural Workshops then Connecticut Science Center or Peabody Museum	Disco or Karaoke
FRIDAY	English Lessons	Six Flags Amusement Park or Lake Compounce (dinner out; late return)	
SATURDAY	Six Flags Amusement Park or Lake Compounce (dinner out; late return)		
SUNDAY	Free Day with Group Leader (or for individual students, Free Day with Staff), or Optional Full-Day Excursion (at extra cost)		
MONDAY	English Lessons	"Prime Climb" Indoor Climbing Center or "Cosmic" Ten Pin Bowling	Welcome Party: Team Building/Name Games
TUESDAY	English Lessons	Cultural Workshops then Yale Center for British Art or Sports & Games	Mardi Gras Party
WEDNESDAY	English Lessons	Hammonasset Beach (dinner out; late return)	
THURSDAY	English Lessons	Cultural Workshops then Mystic Seaport or Norwalk Aquarium	Talent Show or International Night
FRIDAY	English Lessons	Brownstone Park (dinner out; late return)	
SATURDAY	Full Day Excursion: New York City & Walking Tour (no entrance; dinner out; late return)		
SUNDAY	Departure		

UC BERKELEY

CLASSIC COURSE



Founded in 1868 the University of California enjoys an excellent reputation and ranks as one of the top colleges in the U.S. Students will both live and study at this world-famous University situated just a short subway ride away from the heart of San Francisco. The campus, centered in the unique and artistic town of Berkeley, offers stunning views of the San Francisco Bay.



Our San Francisco centre is located at the esteemed University of California, Berkeley (UCB)



EXCURSIONS

One full day excursion per week is included. Destinations may include the Great America Amusement Park, Santa Cruz Beach, Raging Waters Aquatic Park and Monterey and Carmel by the Sea. Four half day excursions per week are also included, destinations may include the Golden Gate Bridge, Alcatraz, Muir Woods, Angel Island and Lake Merritt.



ACCOMMODATION

Residential accommodation is onsite at the University of Berkeley, in one of the college dormitories. Housing both single and twin rooms with shared bathroom facilities and cosy communal areas. Coin-operated laundry facilities are available. Free WiFi is available throughout.

QUICK INFO



GROUPS & INDIVIDUALS



AGES
Groups: 13-17
Individuals: 14-17



ACCOMMODATION
Residential



HIGHLIGHT
Golden Gate Bridge

WHAT'S INCLUDED?



15 HOURS
of English lessons



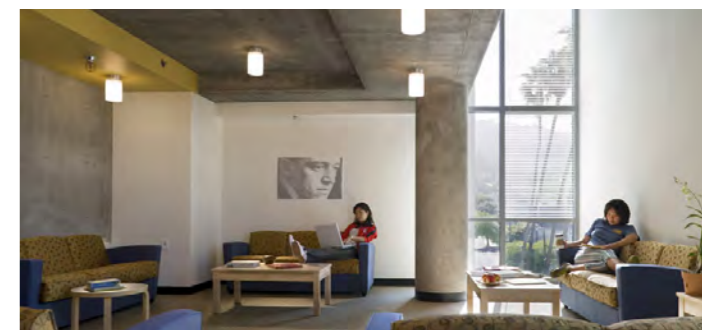
1 FULL DAY
Excursion
per week



1 ON CAMPUS
ACTIVITIES
per week



4 HALF DAY
Excursion
per week



Cosy communal areas are available for students to relax in

SAN FRANCISCO SAMPLE PROGRAMME

	MORNING	AFTERNOON	EVENING
SUNDAY	Arrival, Induction & Campus Tour		Free Evening
MONDAY	Orientation, testing and campus tour	Union Square and Downtown San Francisco	
TUESDAY	Independence Day! July 4th Festivities and Fireworks		
WEDNESDAY	English Lessons	Golden Gate Bridge Bike Ride & Sausalito	
THURSDAY	English Lessons	Afternoon Workshop	UC Berkeley Tour & Campanile
FRIDAY	English Lessons	Swimming & Hiking at Lake Anza / Tilden Park	
SATURDAY	Included Full Day Excursion: Great America Amusement Park		Free Evening
SUNDAY	Free Day with Group Leader (or for individual students, Free Day with Staff), or Optional Activity		
MONDAY	English Lessons	Chinatown and North Beach Tour	
TUESDAY	English Lessons	Afternoon Workshop	Exploratorium Museum
WEDNESDAY	English Lessons	Muir Woods	
THURSDAY	English Lessons	Afternoon Workshop	Temescal Neighborhood
FRIDAY	English Lessons	Boating on Lake Merritt	
SATURDAY	Departure		

TAILORED GROUPS ALL YEAR ROUND

CANTERBURY | CAMBRIDGE | LONDON



At Study Holidays we strive to capture that summer feeling - all year round. In addition to our renowned summer programmes we offer the opportunity for groups to visit some of our best centres all throughout the year.

CUSTOM EXPERIENCES DESIGNED TO THE DETAIL

Alongside the course content, we can offer a bespoke calendar of cultural and social activities, meal plans (with specific dietary requirements if required) and assistance with particular travel arrangements and accommodation types, ensuring that every aspect of your experience is tailored to your needs and expectations.

TAILOR MADE COURSES TO SUIT YOUR NEEDS

Whether your group is looking for specialised course content for academic, cultural or professional purposes, we work with you to understand your requirements and objectives, and use that understanding to design a highly effective teaching programme.

SAMPLE PROGRAMME

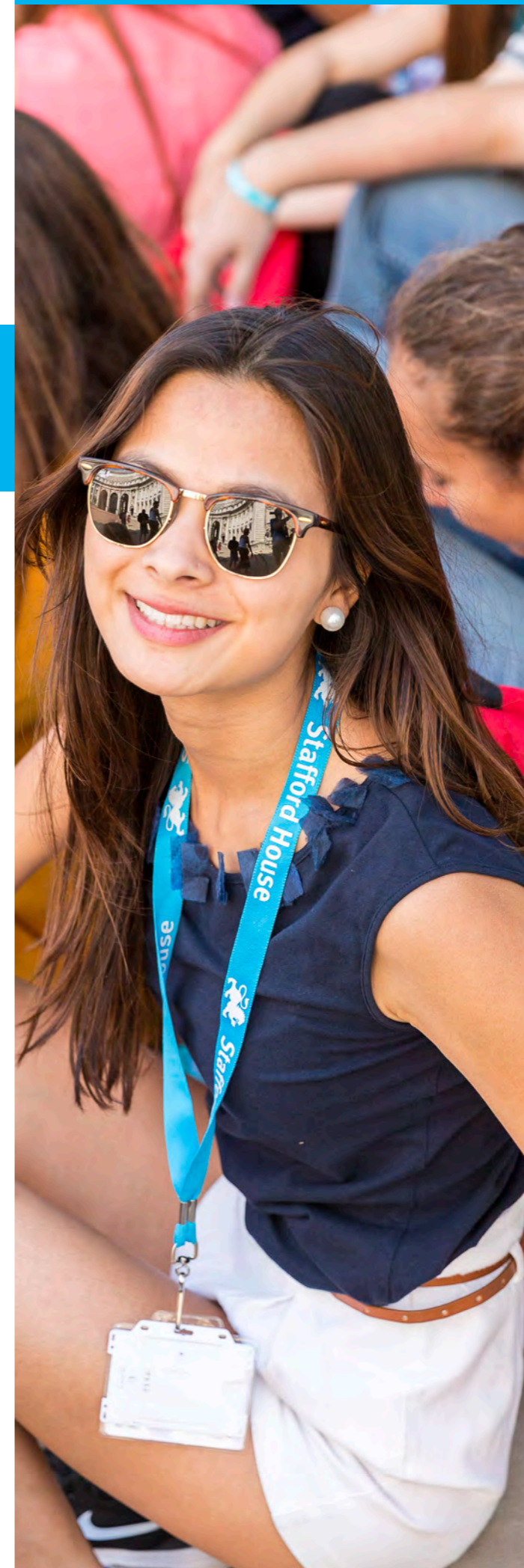
	MORNING	LUNCH	AFTERNOON	DINNER	EVENING
SUNDAY	Arrival and Local Orientation			With family or in residence	Free evening
MONDAY	Placement Test and Induction	Hot lunch	Orientation tour	With family or in residence	Free evening
TUESDAY	English Tuition (3 Hours per day)	Hot lunch	Project work	With family or in residence	Social evening
WEDNESDAY		Hot lunch	Half-day excursion	With family or in residence	Free evening
THURSDAY		Hot lunch	Project work	With family or in residence	Social evening
FRIDAY		Hot lunch	Local visit	With family or in residence	Free evening
SATURDAY		Full day excursion options to London, Cambridge, Oxford and Brighton			With family or in residence
SUNDAY	Departure				

THE SPIRIT OF SHSH ALL YEAR ROUND!

We are well known for our bespoke year-round courses and we deliver tailor-made package programmes for groups from 1-4 weeks, designed according to the needs and interests of each group.

SAMPLE TAILOR-MADE COURSES

- We ran a one-week "Shakespeare" course that included 2 local theatre visits to watch live plays. Students also put on their own performance at the end of the course.
- We run tailored exam preparation courses for Trinity GESE, Cambridge CAE and IELTS preparation for closed groups on short timeframes (2-4 weeks).
- We have had groups of teachers from Spain, Italy and China who took part in morning "refresher" General English classes and "teaching methodology" afternoon classes.
- We also run The World of Work, a course which allows participants to improve their business communication skills and interact confidently and effectively in a number of different professional situations. Students will search, apply and interview for job roles as well as explore the rules, regulations, protocol and jargon of the modern workplace.



YEAR ROUND COURSE OPTIONS

CANTERBURY | CAMBRIDGE | LONDON



For groups studying with us year round, we offer a wide range of choice which can be tailored to a group's specific needs. Exam preparation for both Cambridge suite and IELTS are available as well as CLIL lessons for academic subjects such as Geography or History. We not only welcome junior students but also teachers who are keen to develop both their methodology and language skills.

ENGLISH PLUS ACTIVITIES MINI STAYS / STAGES

- AGE:** 12+ years (varies by centre)
DURATION: 1 week plus
ENGLISH LESSONS: 15 hours per week
LOCATION: All UK centres
- 15 hours of English language lessons per week
 - Maximum class size of 16
 - 2 sports afternoons or 2 project afternoons per week (dependent on centre)
 - 2 social evenings per week
 - 1 full day and one half day excursion per week

EXAM PREPARATION (CAMBRIDGE SUITE AND IELTS)

- DURATION:** 1 week plus
ENGLISH LESSONS: 15 hours per week
LOCATION: All UK centres
- 20 hours of lessons per week
 - Prepare for an internationally recognised qualification
 - PET, KET, FCE and CAE preparation offered depending on the group's age and English level
 - Academic or General IELTS available
 - Option to take the exam as part of the course depending on dates (extra cost)
 - Option to combine General English and exam preparation

PON/POR COURSE

- DURATION:** 1 week plus
ENGLISH LESSONS: 20 hours per week
LOCATION: All UK centres
- 20 hours of English lessons per week
 - Opportunity to combine general English with exam preparation
 - Maximum class size 18
 - A wealth of experience in running successful PON/POR courses
 - 2 social evenings per week
 - 1 full day and one half day excursion per week

WORLD OF WORK

- AGE:** 14+
DURATION: 1-2 weeks
ENGLISH LESSONS: 15 Hours per week
LOCATION: All UK centres
MINIMUM LEVEL: Intermediate
- This course is ideal for those wanting to find out more about the working environment
 - 15 hours of English Lessons per week plus 2 x 3 hour WOW workshops
 - Groups can choose from a combination of general English and a number of specialist subjects including travel and tourism, green economy, marketing or journalism
 - Our most popular workshops explore the job application process: CV writing and interviewing. Others focus on effective communication in the workplace and cover both presentation and written skills
 - Our WOW visits provide an ideal complement to our workshops and give a real insight into the way a company works. Previous visits have included: Metro Bank, The Apple Store and Chelsea Football Club

CLIL

- DURATION:** 1 week plus
ENGLISH LESSONS: 15 hours per week
LOCATION: All UK centres
- 15 hours of English lessons and 5 hours of CLIL subject lessons per week (additional CLIL lessons available on request at an extra cost)
 - An excellent opportunity to study a subject and the English language at the same time
 - A variety of subjects available - tailored to your group's needs
 - Option to combine general English with a specific subject
 - IGCSE preparation may be available upon request
 - 2 social evenings per week
 - 1 full day and one half day excursion per week

COURSES FOR TEACHERS

- AGE:** 18+
DURATION: 1 week plus
ENGLISH LESSONS: 20 Hours per week
LOCATION: All UK centres
- Suitable for practising English language teachers who are keen to further develop their skills
 - Kindergarten, primary and secondary focus available
 - Modules based on lesson planning, technology, teaching productive and receptive skills and many more
 - Options to combine general English with teaching methodology
 - Opportunities to observe classes
 - 20 hours of tuition with a maximum class size of 16



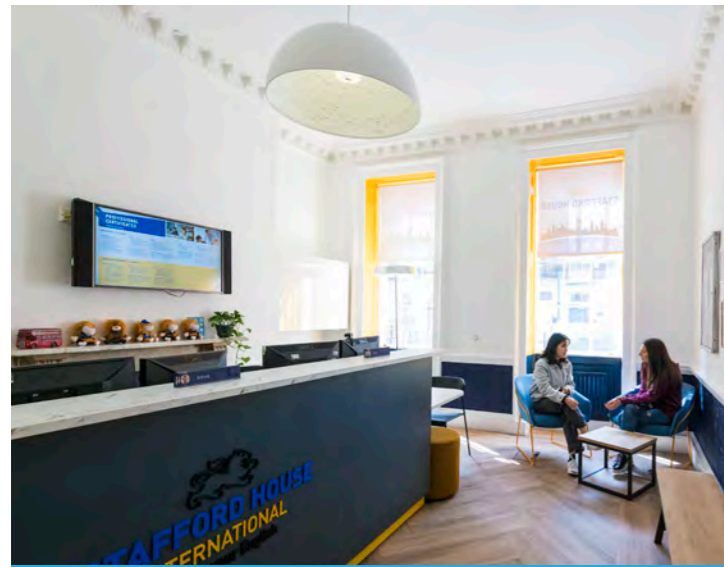
'World of Work' allows students to learn more about the professional environment



YEAR ROUND LOCATIONS

CHOOSE FROM OUR EXCITING YEAR ROUND LOCATIONS!

We can arrange tailored programmes for any group all year round in our exciting locations across the UK. Each programme is tailored specifically to meet the needs and interests of the group – from the course itself, to the food and excursions.



Our London school is located in the heart of the city



Canterbury features a comfortable residence, close to the school



CAMBRIDGE

QUICK INFO

- MINIMUM AGE**
12 Years
- TEACHING TIME**
15 Hours
- FULL DAY EXCURSION**
London
- 1 HALF DAY EXCURSION**
Peterborough

SIGHTSEEING

- PUNTING ON THE RIVER CAM**
- KING'S COLLEGE**



- Located in the heart of the city
- Steps away from the most famous colleges in the world
- Spectacular historic architecture
- Centre of scientific discovery
- A modern learning environment
- All classrooms have interactive whiteboards
- Full day excursion to London
- Orientation tour of Cambridge

ACCOMMODATION:
Homestay

ACTIVITIES:
2 Project afternoons
2 Social evenings

FOOD:
Hot lunch in school and dinner with family

TRAVEL:
Bus pass included

LONDON

QUICK INFO

- MINIMUM AGE**
14 Years
- TEACHING TIME**
15 Hours
- FULL DAY EXCURSION**
Oxford
- 1 HALF DAY EXCURSION**
London

SIGHTSEEING

- LONDON EYE**
- TOWER OF LONDON**



- One of the worlds most exciting cities
- Located in the heart of upmarket Bloomsbury, central London
- Great transport connections for excursions to other cities such as Oxford, Cambridge, Brighton, and Canterbury
- Hot lunch and dinner in our own canteen, Monday – Friday

ACCOMMODATION:
Homestay

ACTIVITIES:
2 Social evenings

FOOD:
Hot lunch in school and dinner with family

TRAVEL:
Travel card included

CANTERBURY

QUICK INFO

- MINIMUM AGE**
12 Years
- TEACHING TIME**
15 Hours
- FULL DAY EXCURSION**
London
- 1 HALF DAY EXCURSION**
Dover Castle

SIGHTSEEING

- CANTERBURY TALES MUSEUM**
- CANTERBURY CATHEDRAL**



- Study in an ancient English city
- Comfortable residence minutes from the school
- Afternoon project work in Canterbury city centre and visits to places of historic interest
- Hot lunch and dinner in our own canteen Monday – Friday
- Shuttle bus to/from school each day
- Full day excursion to London
- Guided walking tour of Canterbury including the Cathedral

ACCOMMODATION:
Homestay and Residential

ACTIVITIES:
1 Sports afternoon
2 Project afternoons
3 Social evenings

FOOD:
Hot lunch and dinner in school on weekdays

TRAVEL:
Free bus transfer from homestay to school



Summer School at CSVPA

At Cambridge School of Visual & Performing Arts we offer a range of diverse and creative summer courses.

If you are passionate about the arts and want to explore your creativity with others young artists then spend the summer with us. Our summer courses are also an excellent way to prepare for full time study!

Accommodation

Our accommodation is located in safe, beautiful surroundings, about 20-25 minutes' walk from the campus. We offer a balance between supervision and independence to make sure that you are comfortable and happy in your accommodation.

Meals

Meals are included within the fees and include breakfast, lunch and evening meals all served on campus in the cafeteria.

Evening Activities

Evening activities are compulsory for all students under 18 years old. Activities might include under 18s club night, the cinema, games or music in the park, bowling, a ghost tour or a quiz night

Excursions

Saturday excursions are compulsory for under 18 year old students. Every week we organise a different trip giving you the opportunity to explore UK attractions. For example, trips might include visits to the V&A, Tate Modern, Tate Britain, Science Museum, Natural History Museum or Southwold Beach. Saturday trips include transport, ticket entry and packed lunches.



WEEK COMMENCING (SUNDAY)	23 JUN	30 JUN	07 JUL	14 JUL	21 JUL	28 JUL	04 AUG	11 AUG	AGE
Fashion (1 - 2 weeks)		■	■	■	■	■	■		14 - 18
Fashion Communication (1 week)				■					14 - 18
Fashion Styling (1 week)					■				14 - 18
Fashion Make Up			■			■			14 - 18
Graphics & Illustration (1 week)		■		■		■			14 - 18
Painting and Drawing (1 week)	■		■		■				14 - 18
3D Design (1 week)			■			■			14 - 18
Photography (1 week)	■	■	■		■	■			14 - 18
Animation (1 week)		■	■						14 - 18
Game Design (1 week)				■	■				14 - 18
Film Making (1 - 2 weeks)		■	■	■	■	■	■		14 - 18
Musical Theatre (1 - 2 weeks)	■	■	■	■	■	■			14 - 18
Acting (1 - 2 weeks)	■	■	■	■	■	■			14 - 18
Music Production (1 week)	■			■					14 - 18
Portfolio Preparation (3 weeks)		■			■				15 - 18

*All prices include accommodation, meals, transfers & registration fee. There is also an additional fee of £150 will apply for unaccompanied minor services. NB: the 1 week subjects, course content is generally the same each week.



EXPLORE YOUR ENGLISH

• CAMBRIDGE • CANTERBURY • LONDON •

ADULT ENGLISH LANGUAGE COURSES

Stafford House International is a boutique group of English language schools located in London, Cambridge and Canterbury in the UK.

STAFFORD HOUSE INTERNATIONAL

We offer English courses for general, academic and professional purposes as well as a range of English and activities options for young learners. Our mission is to educate, inspire, and help our students enjoy our cities, empowering them with confidence, to realise their personal potential.

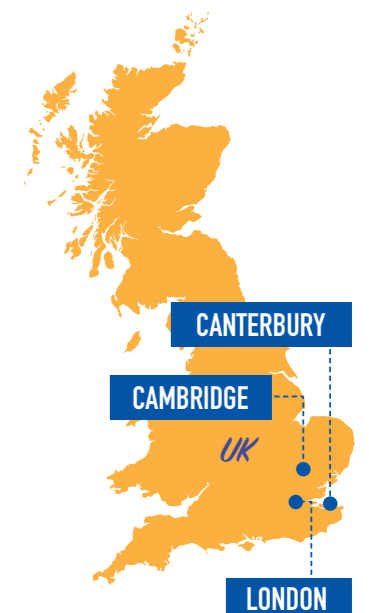
With over 65 years' experience of providing international students with effective and enjoyable English language courses and a range of professional courses including Business English, Marketing, Project Management, Business Management and Bloomberg Market Concepts, we have courses to suit all needs.

For more information visit www.staffordhouse.com



OUR COURSES

- IELTS preparation
- Cambridge ESOL
- Business English
- Professional Certificates
- One-to-One English
- CELTA teacher training
- General English





PART OF
CATS
GLOBAL SCHOOLS

Stafford House International is part of CATS Global Schools, a leading education group committed to inspiring the next generation of world shapers. Develop real-life skills for the future at one of our independent boarding schools, an Arts School, English language schools and a variety of summer programmes in the UK and North America.



Trust

CATS Global Schools has been educating since 1899 and welcome students from all around the world. We are proud of our reputation for providing exceptional student care and we are dedicated to academic excellence.

Quality

Our reputation for quality is recognised throughout the education industry. We make sure that all our students are offered a great choice of courses, excellent teaching, comfortable accommodation and exciting activities.

Proven Track Record

Each year, we provide 18,000 students around the globe with the education they need to develop real-life skills for the future. Our students benefit from our well-developed links to over 40 top global universities.

Safety

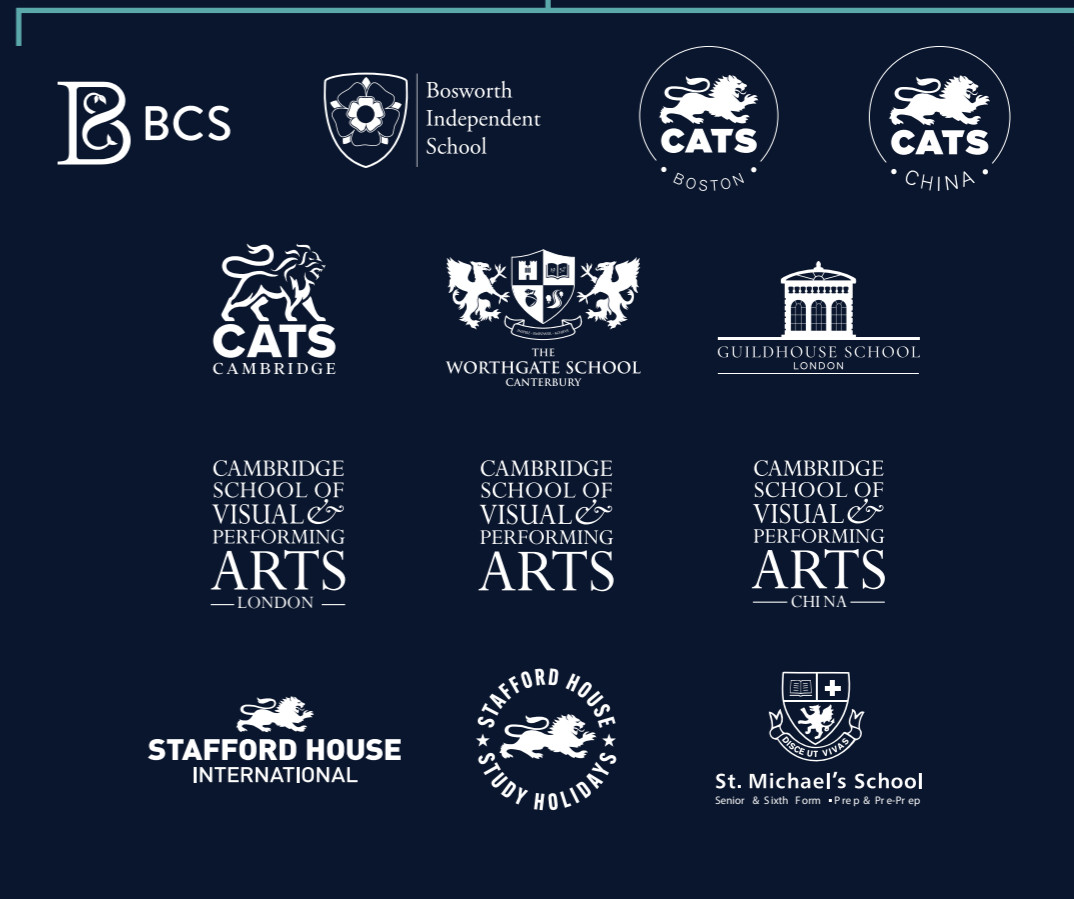
All of our schools are located in top student cities and provide a safe environment for students, with dedicated and highly trained staff on hand to provide supervision, support and guidance throughout their time with us.



Find out how you can go further at
www.catsglobalschools.com



CATS
GLOBAL SCHOOLS



UK Schools

US School

Arts Schools

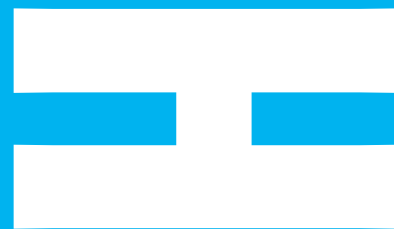
English Language Schools

GET IN TOUCH! WE'D LOVE TO HEAR FROM YOU

Enquiries and Reservations

Stafford House Study Holidays
19 New Dover Road
Canterbury
Kent CT1 3AS

T: +44 (0)1227 787730
E: reservations@staffordhouse.com
www.studyholidays.com



FUTURE



WWW.STUDYHOLIDAYS.COM